





UNIT PLANS



THE ALCOVE RESIDENCES (STUDIO)

Elegant studio residences, thoughtfully planned and designed to feel open, effortless, and beautifully composed.

STUDIO UNIT PLAN

INTERNAL AREA - 224 SQ.FT.

TOTAL AREA - 224 SQ.FT.



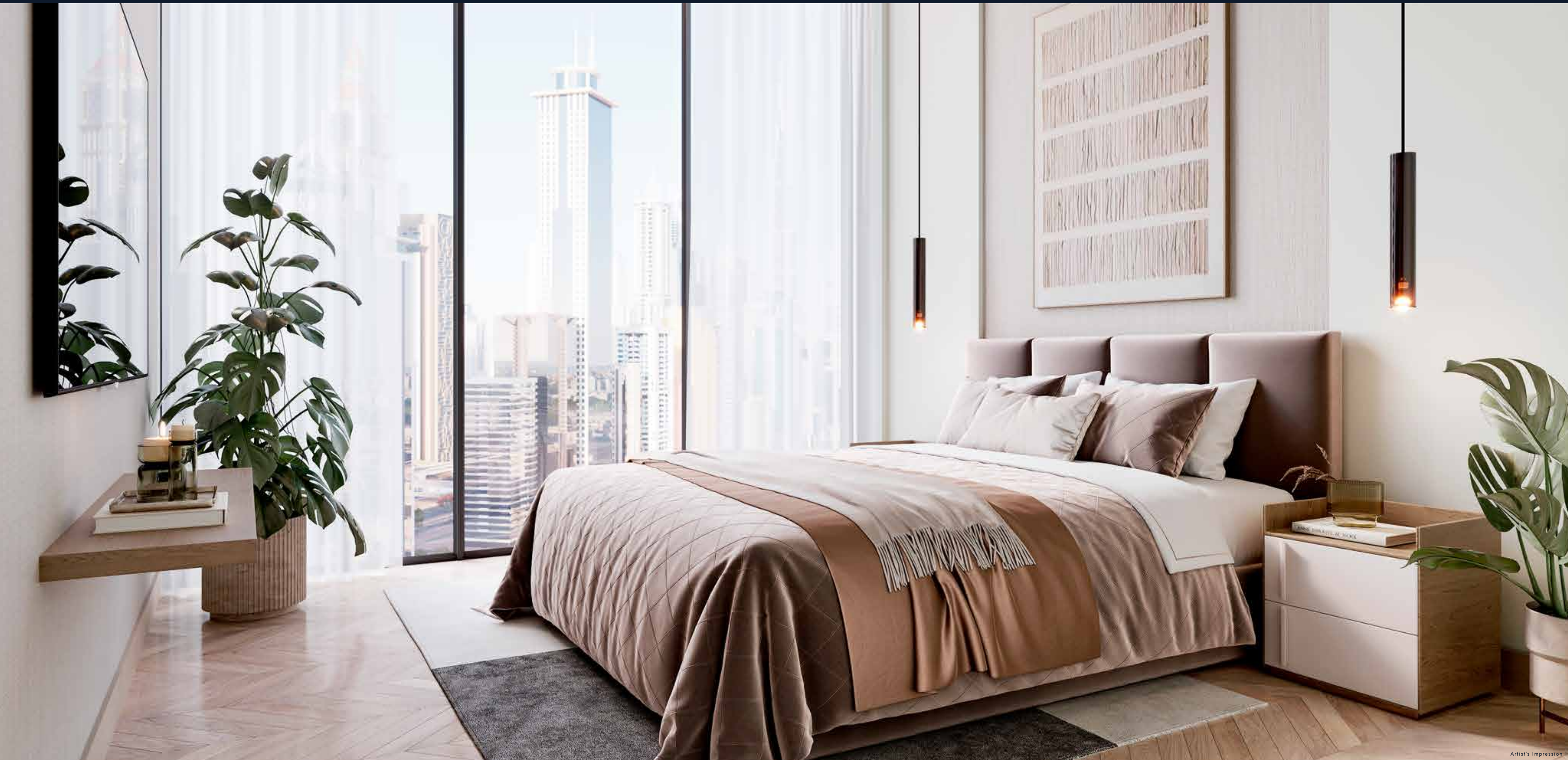
VIEWS

Community View

This Unit plan is applicable to 204, 304, 404, 504, 604, 704 & 804

Disclaimer: The above plans are indicative and provided strictly for reference. All plans, details, specifications, and unit orientations are subject to revision and change at the exclusive discretion of the developer or seller without prior notice, obligation or liability. Images, features, finishes, furnishings, views, and scales are illustrative and may not accurately reflect the final product. Actual areas, orientations, dimensions, layouts, materials, and fittings may differ from those depicted. The indicated north direction is approximate and may vary depending on the unit's placement within the master plan.





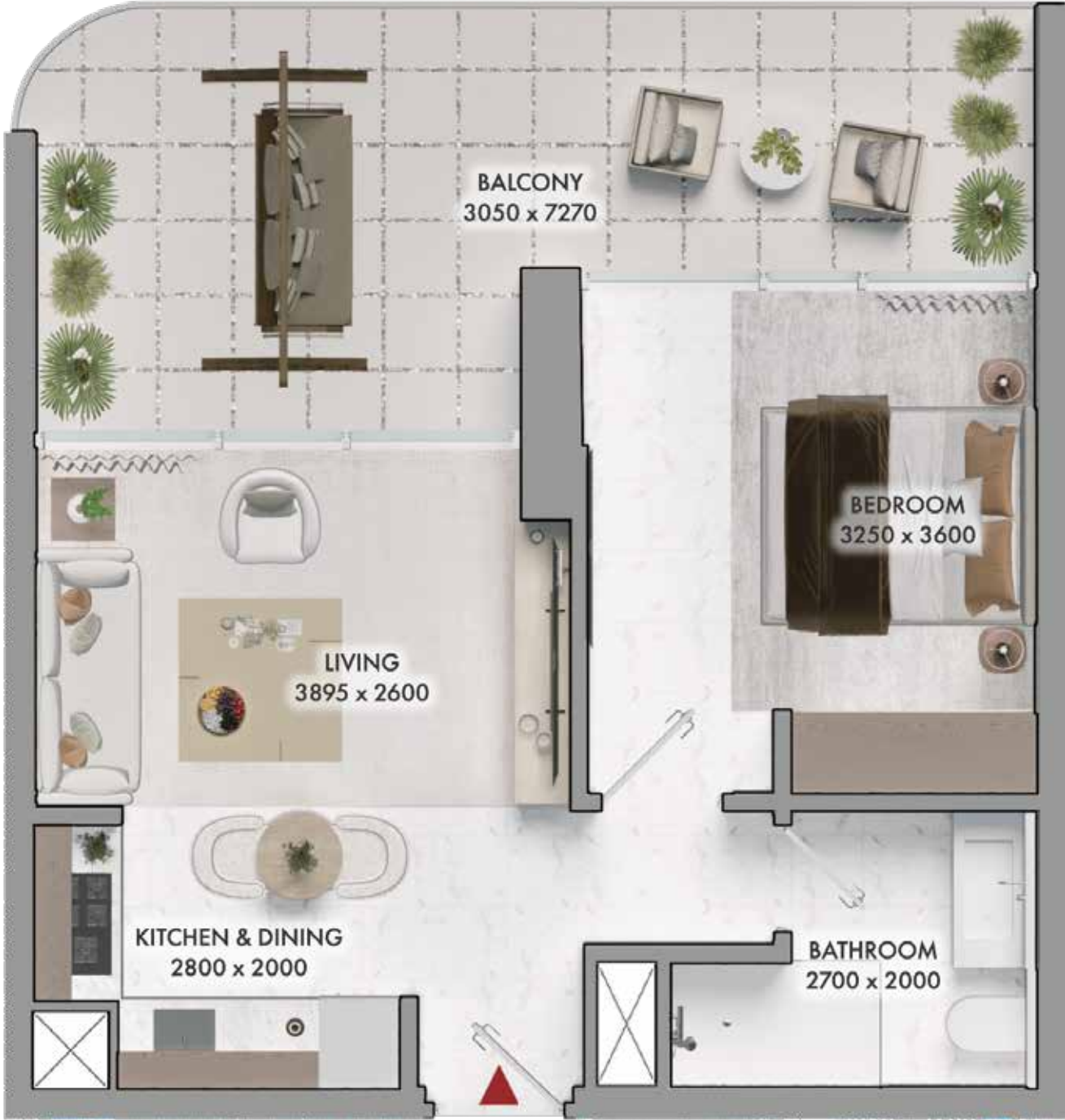
Artist's Impression

THE SOLITAIRE RESIDENCES (1 BED)

Premier one-bedroom residences, designed with exquisite detailing and created as private retreats of elegance and stature.

1 BED
TYPE 1 UNIT PLAN

INTERNAL AREA - 422 SQ.FT.
BALCONY AREA - 208 SQ.FT.
TOTAL AREA - 630 SQ.FT.



VIEWS
Community View
This Unit plan is applicable to 102

Disclaimer: The above plans are indicative and provided strictly for reference. All plans, details, specifications, and unit orientations are subject to revision and change at the exclusive discretion of the developer or seller without prior notice, obligation or liability. Images, features, finishes, furnishings, views, and scales are illustrative and may not accurately reflect the final product. Actual areas, orientations, dimensions, layouts, materials, and fittings may differ from those depicted. The indicated north direction is approximate and may vary depending on the unit's placement within the master plan.

1 BED
TYPE 2 UNIT PLAN

INTERNAL AREA - 353 SQ.FT.
BALCONY AREA - 177 SQ.FT.
TOTAL AREA - 530 SQ.FT.



VIEWS
Community View
This Unit plan is applicable to 103

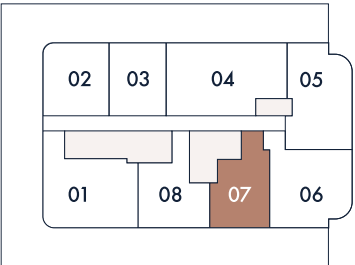
Disclaimer: The above plans are indicative and provided strictly for reference. All plans, details, specifications, and unit orientations are subject to revision and change at the exclusive discretion of the developer or seller without prior notice, obligation or liability. Images, features, finishes, furnishings, views, and scales are illustrative and may not accurately reflect the final product. Actual areas, orientations, dimensions, layouts, materials, and fittings may differ from those depicted. The indicated north direction is approximate and may vary depending on the unit's placement within the master plan.

1 BED
TYPE 3 UNIT PLAN

INTERNAL AREA - 478 SQ.FT.
BALCONY AREA - 154 SQ.FT.
TOTAL AREA - 632 SQ.FT.



VIEWS
Burj Khalifa & Downtown
This Unit plan is applicable to 107



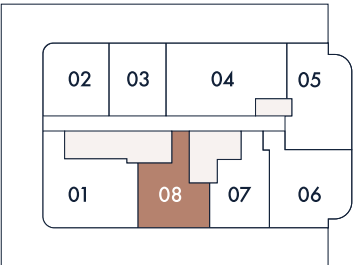
Disclaimer: The above plans are indicative and provided strictly for reference. All plans, details, specifications, and unit orientations are subject to revision and change at the exclusive discretion of the developer or seller without prior notice, obligation or liability. Images, features, finishes, furnishings, views, and scales are illustrative and may not accurately reflect the final product. Actual areas, orientations, dimensions, layouts, materials, and fittings may differ from those depicted. The indicated north direction is approximate and may vary depending on the unit's placement within the master plan.

1 BED
TYPE 4 UNIT PLAN

INTERNAL AREA - 512 SQ.FT.
BALCONY AREA - 182 SQ.FT.
TOTAL AREA - 694 SQ.FT.



VIEWS
Burj Khalifa & Downtown
This Unit plan is applicable to 108



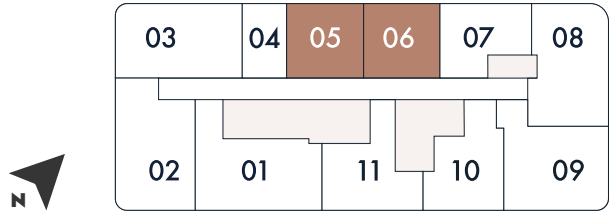
Disclaimer: The above plans are indicative and provided strictly for reference. All plans, details, specifications, and unit orientations are subject to revision and change at the exclusive discretion of the developer or seller without prior notice, obligation or liability. Images, features, finishes, furnishings, views, and scales are illustrative and may not accurately reflect the final product. Actual areas, orientations, dimensions, layouts, materials, and fittings may differ from those depicted. The indicated north direction is approximate and may vary depending on the unit's placement within the master plan.

1 BED
TYPE 5 UNIT PLAN

INTERNAL AREA - 354 SQ.FT.
BALCONY AREA - 39 SQ.FT.
TOTAL AREA - 393 SQ.FT.



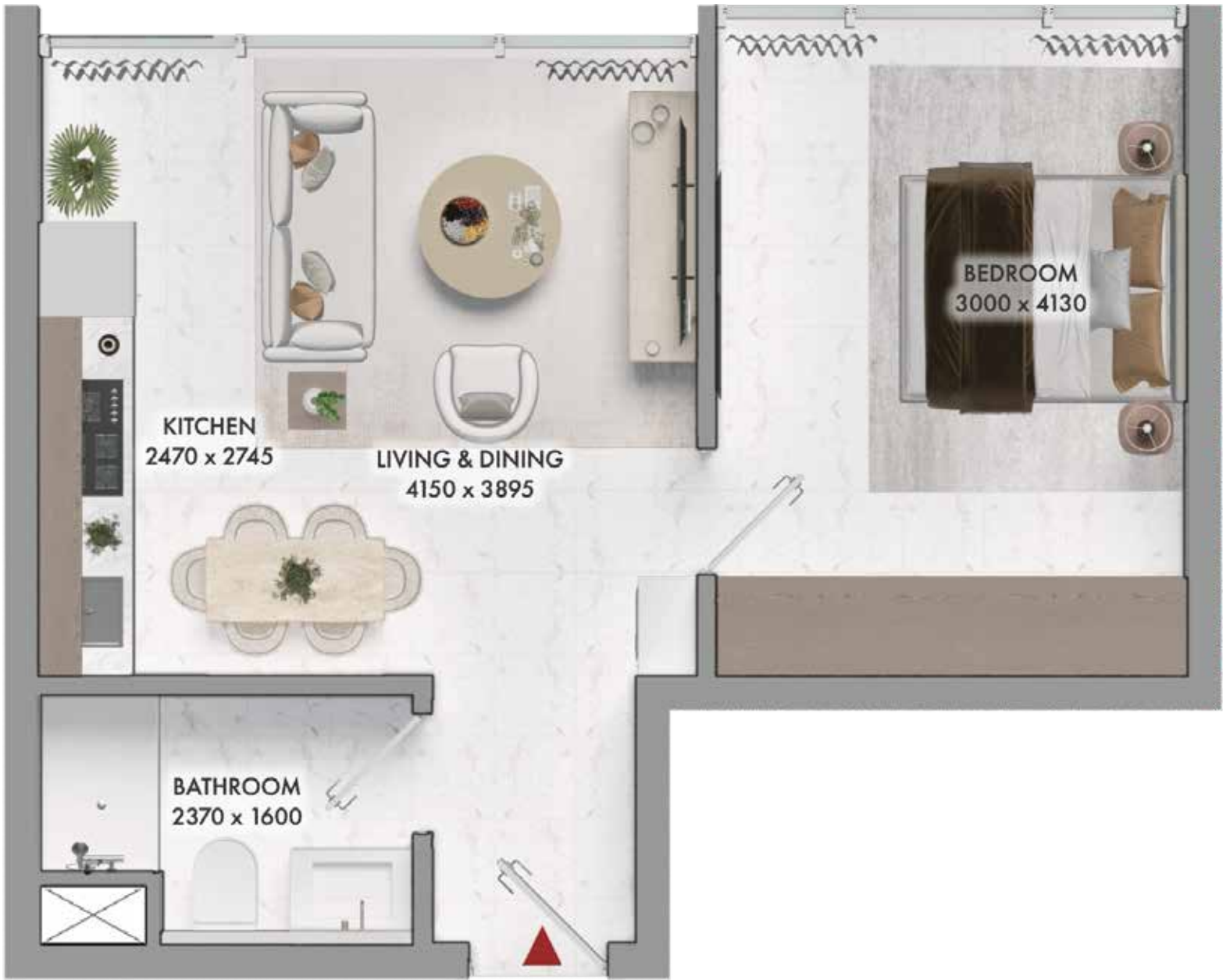
VIEWS
Community View
This Unit plan is applicable to 205, 206, 305, 306, 405, 406, 505, 506, 605, 606, 705, 706, 805 & 806



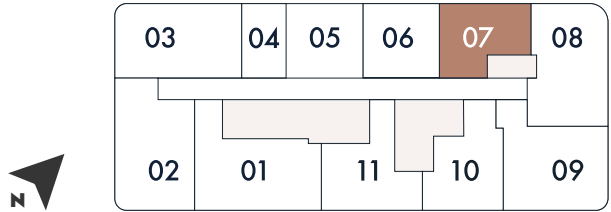
Disclaimer: The above plans are indicative and provided strictly for reference. All plans, details, specifications, and unit orientations are subject to revision and change at the exclusive discretion of the developer or seller without prior notice, obligation or liability. Images, features, finishes, furnishings, views, and scales are illustrative and may not accurately reflect the final product. Actual areas, orientations, dimensions, layouts, materials, and fittings may differ from those depicted. The indicated north direction is approximate and may vary depending on the unit's placement within the master plan.

1 BED
TYPE 6 UNIT PLAN

INTERNAL AREA - 395 SQ.FT.
TOTAL AREA - 395 SQ.FT.



VIEWS
Community View
This Unit plan is applicable to 207, 307, 407, 507, 607, 707 & 807



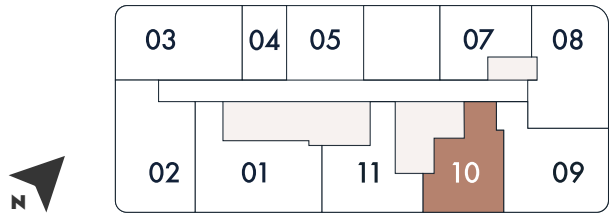
Disclaimer: The above plans are indicative and provided strictly for reference. All plans, details, specifications, and unit orientations are subject to revision and change at the exclusive discretion of the developer or seller without prior notice, obligation or liability. Images, features, finishes, furnishings, views, and scales are illustrative and may not accurately reflect the final product. Actual areas, orientations, dimensions, layouts, materials, and fittings may differ from those depicted. The indicated north direction is approximate and may vary depending on the unit's placement within the master plan.

1 BED
TYPE 7 UNIT PLAN

INTERNAL AREA - 478 SQ.FT.
TOTAL AREA - 478 SQ.FT.



VIEWS
Burj Khalifa & Downtown
This Unit plan is applicable to 210, 310, 410,
510, 610, 710 & 810



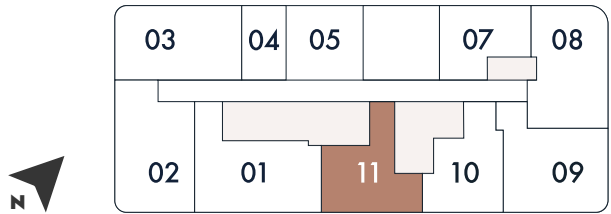
Disclaimer: The above plans are indicative and provided strictly for reference. All plans, details, specifications, and unit orientations are subject to revision and change at the exclusive discretion of the developer or seller without prior notice, obligation or liability. Images, features, finishes, furnishings, views, and scales are illustrative and may not accurately reflect the final product. Actual areas, orientations, dimensions, layouts, materials, and fittings may differ from those depicted. The indicated north direction is approximate and may vary depending on the unit's placement within the master plan.

1 BED
TYPE 8 UNIT PLAN

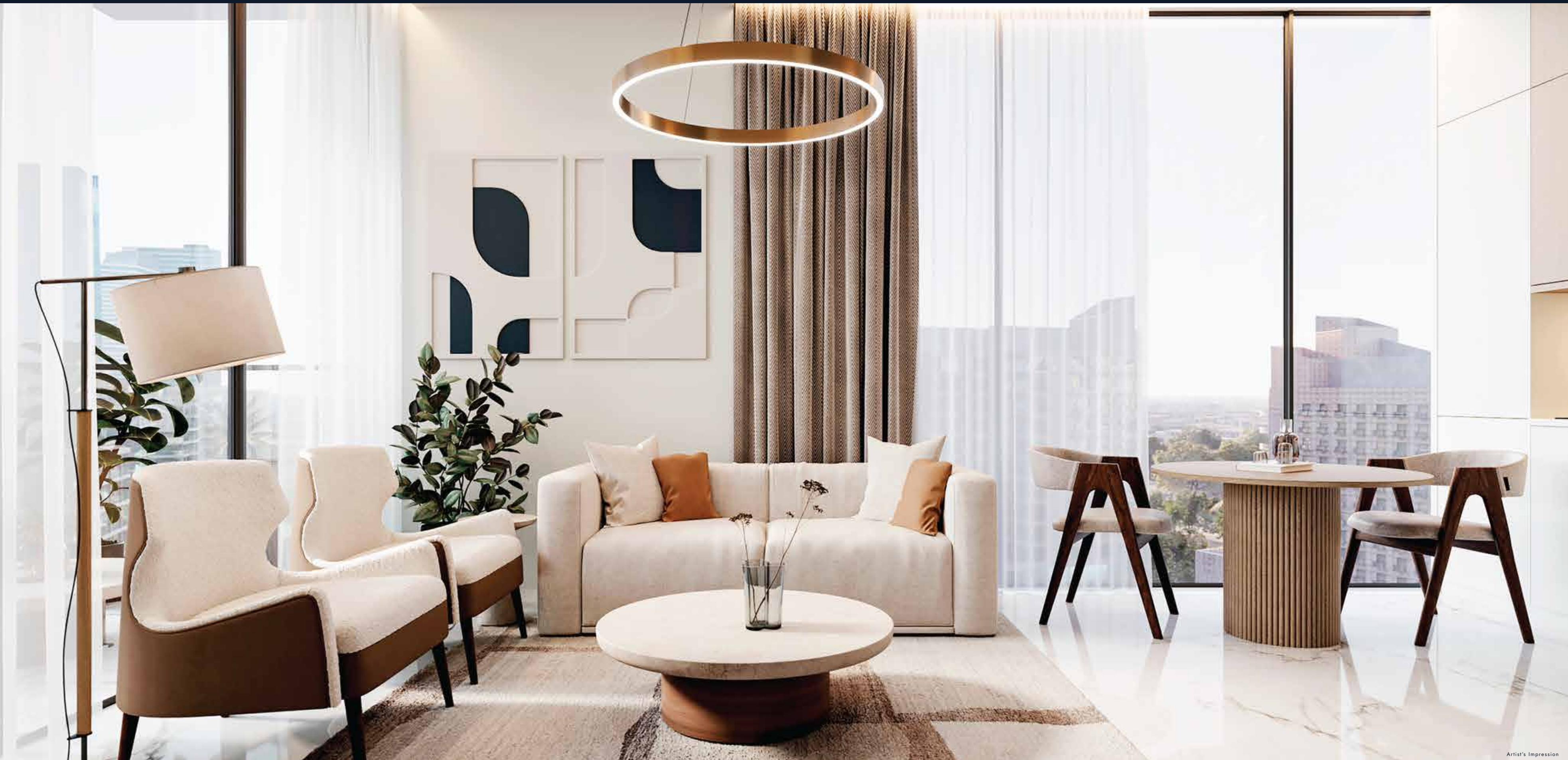
INTERNAL AREA - 502 SQ.FT.
TOTAL AREA - 502 SQ.FT.



VIEWS
Burj Khalifa & Downtown
This Unit plan is applicable to 211, 311,
411, 511, 611, 711 & 811

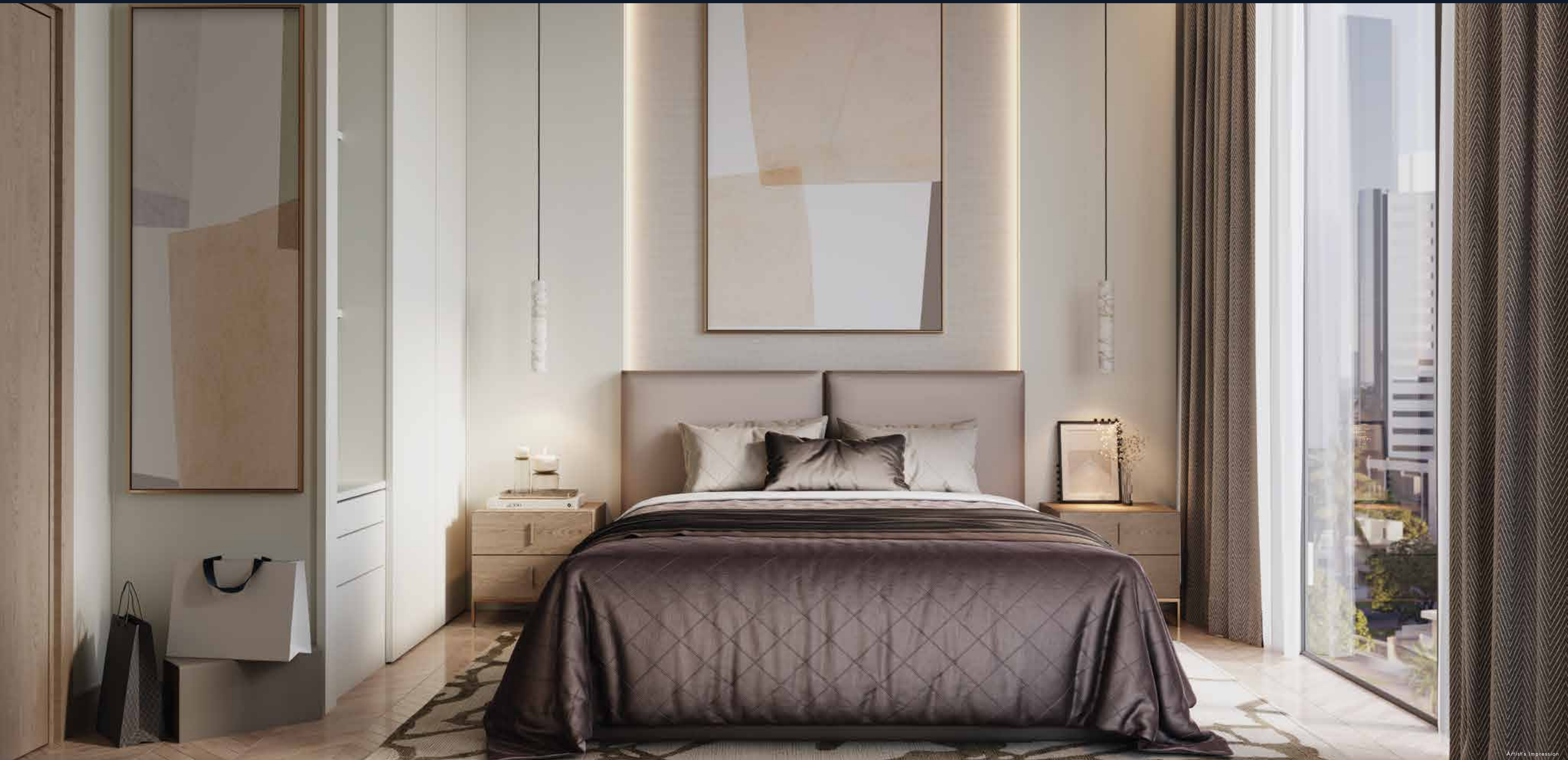


Disclaimer: The above plans are indicative and provided strictly for reference. All plans, details, specifications, and unit orientations are subject to revision and change at the exclusive discretion of the developer or seller without prior notice, obligation or liability. Images, features, finishes, furnishings, views, and scales are illustrative and may not accurately reflect the final product. Actual areas, orientations, dimensions, layouts, materials, and fittings may differ from those depicted. The indicated north direction is approximate and may vary depending on the unit's placement within the master plan.



Artist's Impression

THE REGAL
RESIDENCES
(2 BED)



Artist's Impression

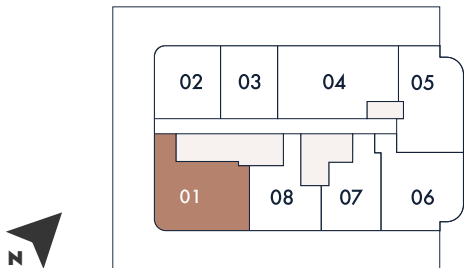
◆ Expansive two-bedroom residences, conceived on a grand scale to embody the true measure of prestige and indulgence.

2 BED
TYPE 1 UNIT PLAN

INTERNAL AREA - 687 SQ.FT.
BALCONY AREA - 270 SQ.FT.
TOTAL AREA - 957 SQ.FT.



VIEWS
Burj Khalifa & Downtown
This Unit plan is applicable to 101



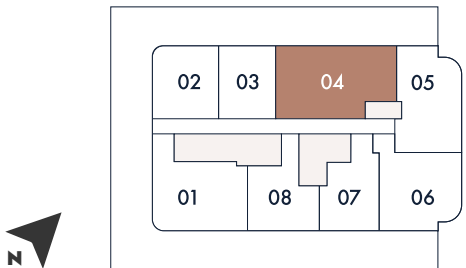
Disclaimer: The above plans are indicative and provided strictly for reference. All plans, details, specifications, and unit orientations are subject to revision and change at the exclusive discretion of the developer or seller without prior notice, obligation or liability. Images, features, finishes, furnishings, views, and scales are illustrative and may not accurately reflect the final product. Actual areas, orientations, dimensions, layouts, materials, and fittings may differ from those depicted. The indicated north direction is approximate and may vary depending on the unit's placement within the master plan.

2 BED
TYPE 2 UNIT PLAN

INTERNAL AREA - 764 SQ.FT.
BALCONY AREA - 341 SQ.FT.
TOTAL AREA - 1,106 SQ.FT.



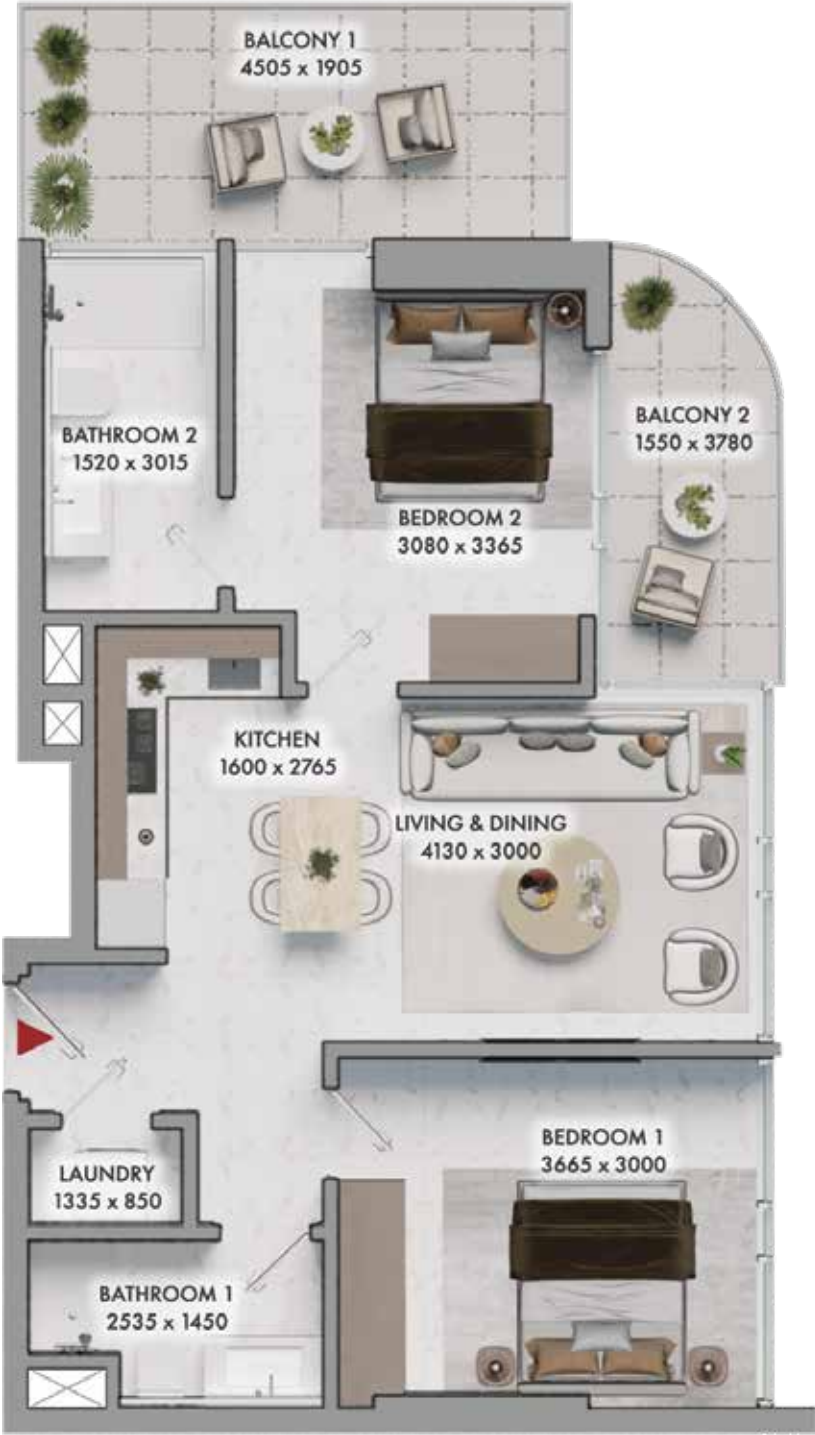
VIEWS
Community View
This Unit plan is applicable to 104



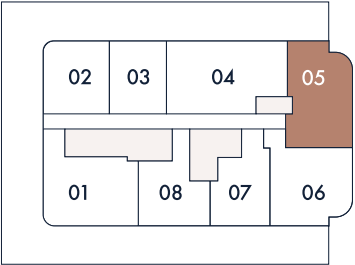
Disclaimer: The above plans are indicative and provided strictly for reference. All plans, details, specifications, and unit orientations are subject to revision and change at the exclusive discretion of the developer or seller without prior notice, obligation or liability. Images, features, finishes, furnishings, views, and scales are illustrative and may not accurately reflect the final product. Actual areas, orientations, dimensions, layouts, materials, and fittings may differ from those depicted. The indicated north direction is approximate and may vary depending on the unit's placement within the master plan.

2 BED
TYPE 3 UNIT PLAN

INTERNAL AREA - 602 SQ.FT.
BALCONY AREA - 162 SQ.FT.
TOTAL AREA - 764 SQ.FT.



VIEWS
Dubai Frame
This Unit plan is applicable to 105



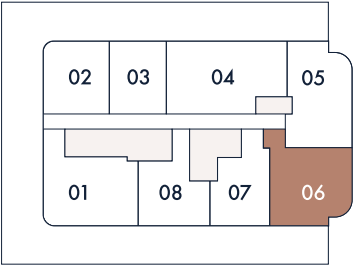
Disclaimer: The above plans are indicative and provided strictly for reference. All plans, details, specifications, and unit orientations are subject to revision and change at the exclusive discretion of the developer or seller without prior notice, obligation or liability. Images, features, finishes, furnishings, views, and scales are illustrative and may not accurately reflect the final product. Actual areas, orientations, dimensions, layouts, materials, and fittings may differ from those depicted. The indicated north direction is approximate and may vary depending on the unit's placement within the master plan.

2 BED
TYPE 4 UNIT PLAN

INTERNAL AREA - 588 SQ.FT.
BALCONY AREA - 230 SQ.FT.
TOTAL AREA - 818 SQ.FT.



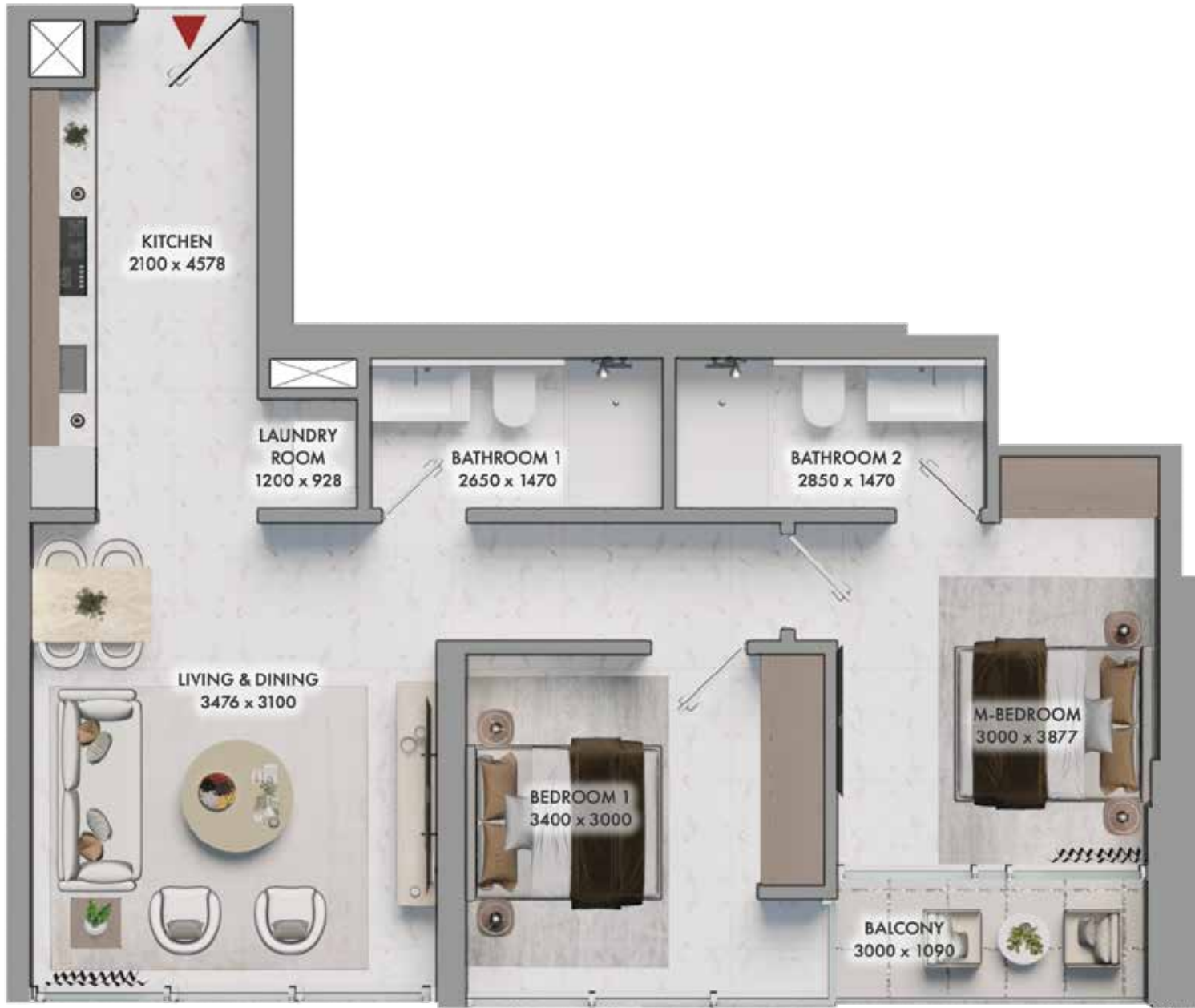
VIEWS
Dubai Frame + Skyline
This Unit plan is applicable to 106



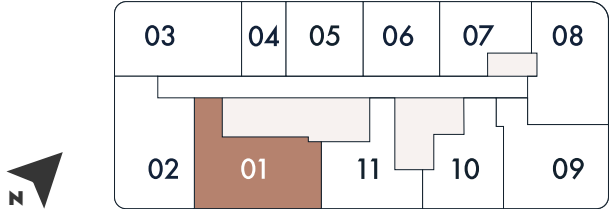
Disclaimer: The above plans are indicative and provided strictly for reference. All plans, details, specifications, and unit orientations are subject to revision and change at the exclusive discretion of the developer or seller without prior notice, obligation or liability. Images, features, finishes, furnishings, views, and scales are illustrative and may not accurately reflect the final product. Actual areas, orientations, dimensions, layouts, materials, and fittings may differ from those depicted. The indicated north direction is approximate and may vary depending on the unit's placement within the master plan.

2 BED
TYPE 5 UNIT PLAN

INTERNAL AREA - 687 SQ.FT.
BALCONY AREA - 39 SQ.FT.
TOTAL AREA - 726 SQ.FT.



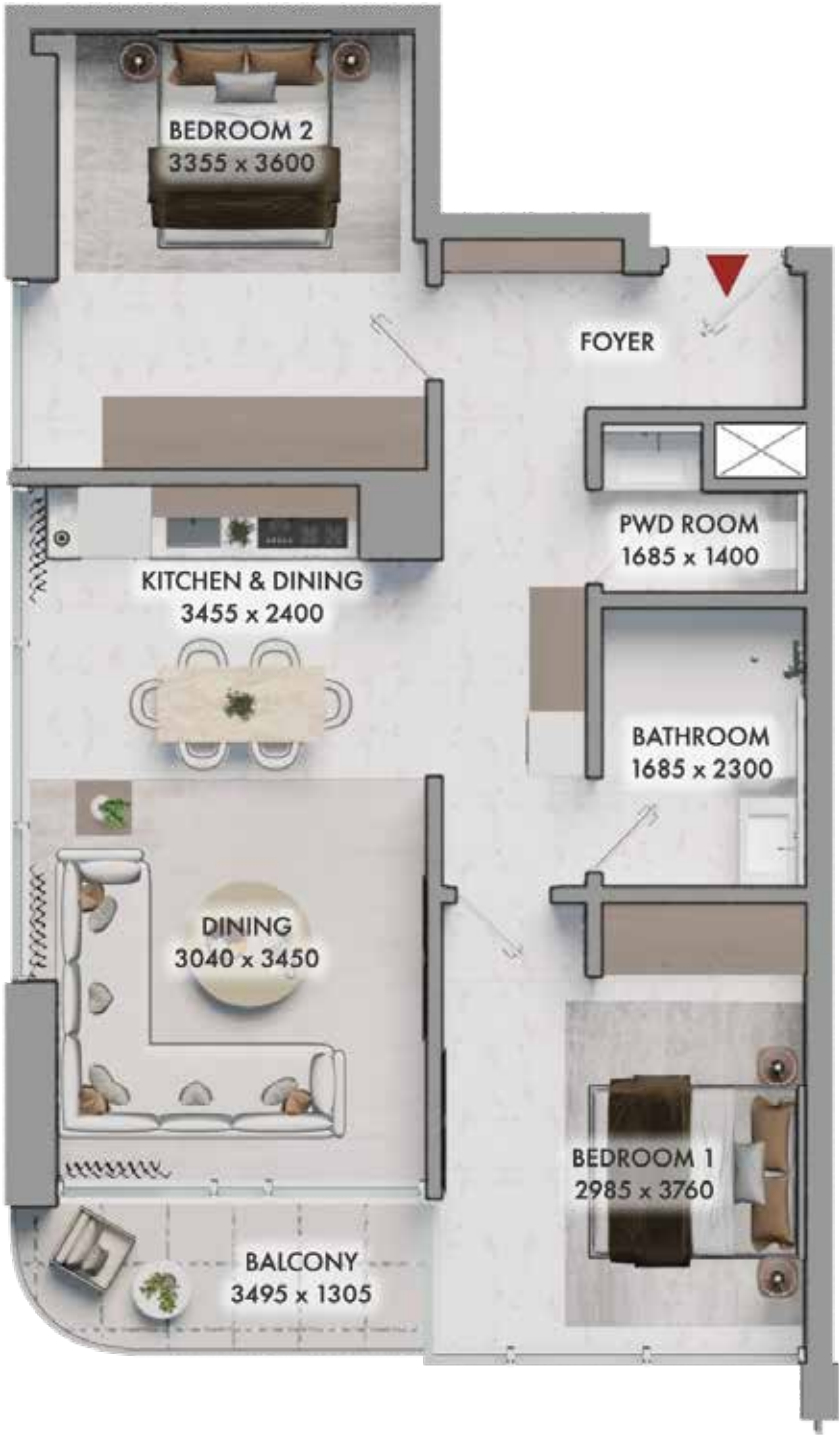
VIEWS
Burj Khalifa & Downtown
This Unit plan is applicable to 201, 301, 401, 501, 601, 701 & 801



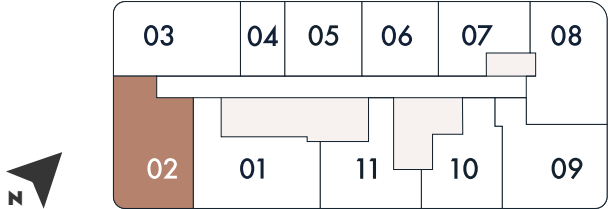
Disclaimer: The above plans are indicative and provided strictly for reference. All plans, details, specifications, and unit orientations are subject to revision and change at the exclusive discretion of the developer or seller without prior notice, obligation or liability. Images, features, finishes, furnishings, views, and scales are illustrative and may not accurately reflect the final product. Actual areas, orientations, dimensions, layouts, materials, and fittings may differ from those depicted. The indicated north direction is approximate and may vary depending on the unit's placement within the master plan.

2 BED
TYPE 6 UNIT PLAN

INTERNAL AREA - 643 SQ.FT.
BALCONY AREA - 48 SQ.FT.
TOTAL AREA - 691 SQ.FT.



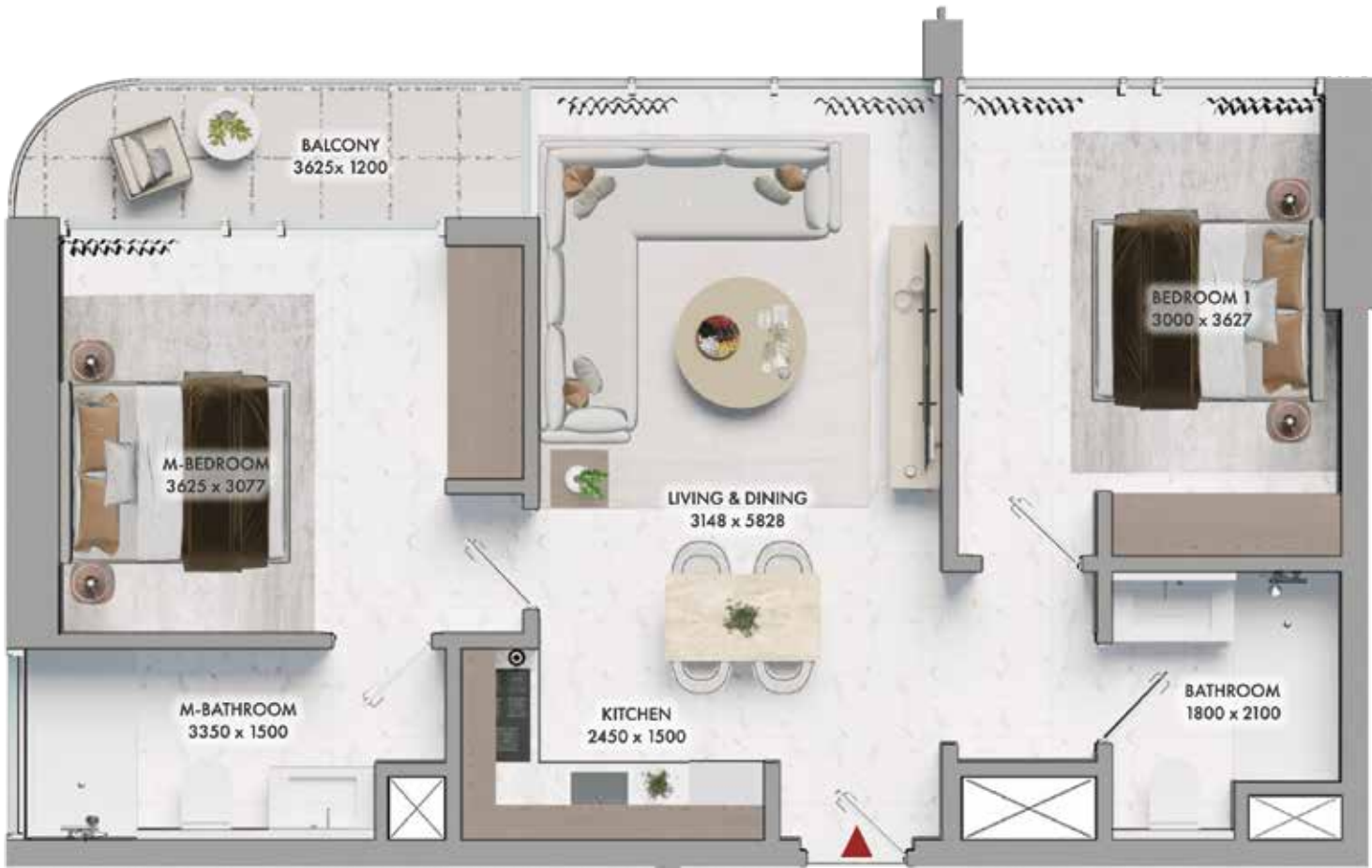
VIEWS
Burj Khalifa & Downtown
This Unit plan is applicable to 202, 302, 402, 502, 602, 702 & 802



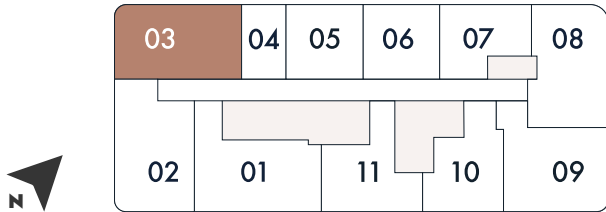
Disclaimer: The above plans are indicative and provided strictly for reference. All plans, details, specifications, and unit orientations are subject to revision and change at the exclusive discretion of the developer or seller without prior notice, obligation or liability. Images, features, finishes, furnishings, views, and scales are illustrative and may not accurately reflect the final product. Actual areas, orientations, dimensions, layouts, materials, and fittings may differ from those depicted. The indicated north direction is approximate and may vary depending on the unit's placement within the master plan.

2 BED
TYPE 7 UNIT PLAN

INTERNAL AREA - 604 SQ.FT.
BALCONY AREA - 47 SQ.FT.
TOTAL AREA - 651 SQ.FT.



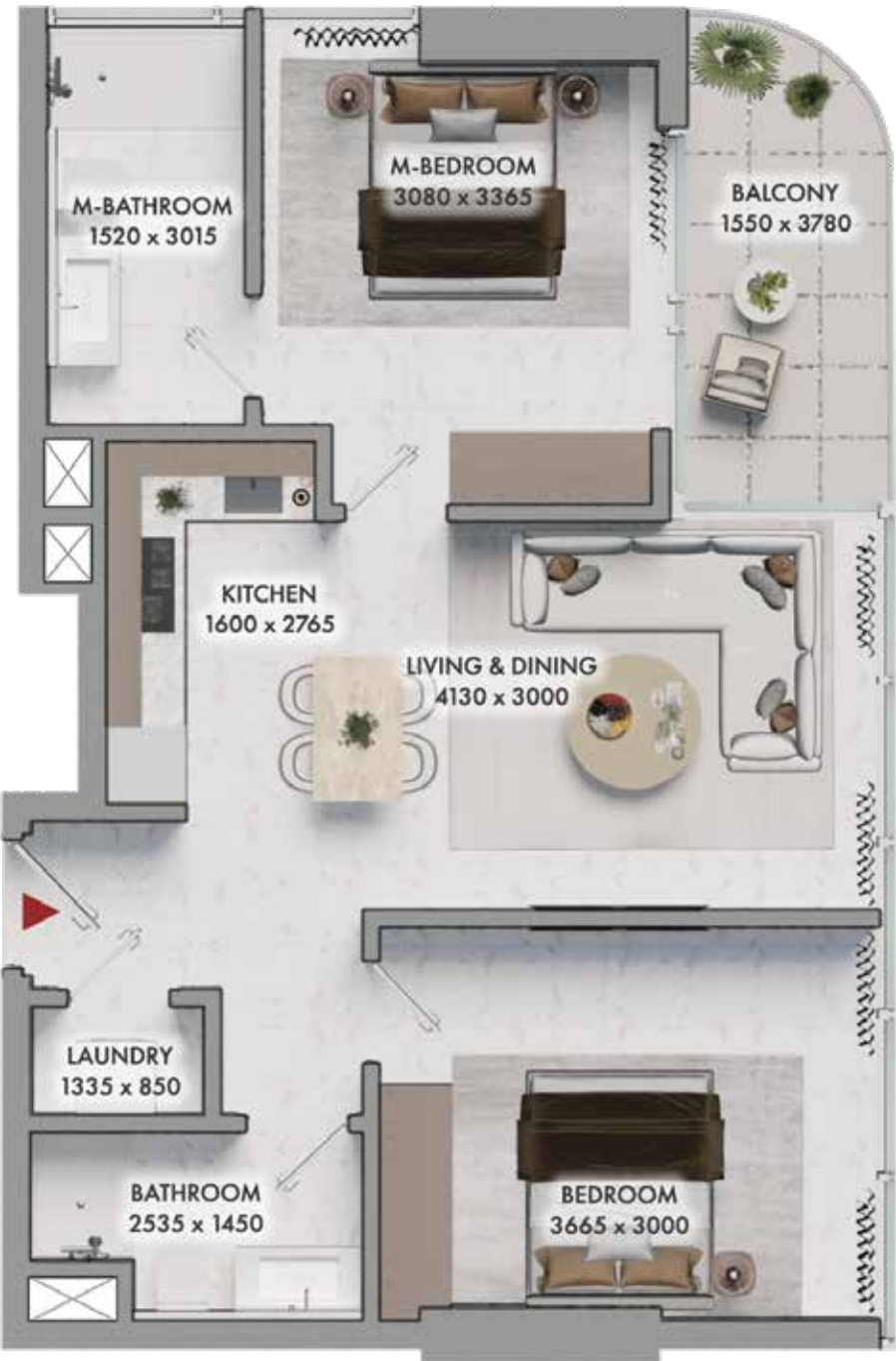
VIEWS
Community View
This Unit plan is applicable to 203, 303, 403, 503, 603, 703 & 803



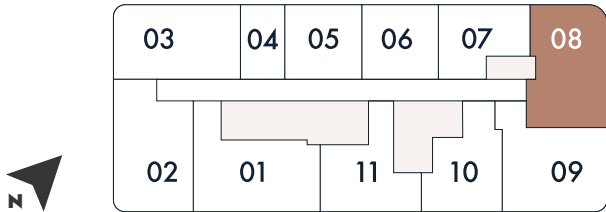
Disclaimer: The above plans are indicative and provided strictly for reference. All plans, details, specifications, and unit orientations are subject to revision and change at the exclusive discretion of the developer or seller without prior notice, obligation or liability. Images, features, finishes, furnishings, views, and scales are illustrative and may not accurately reflect the final product. Actual areas, orientations, dimensions, layouts, materials, and fittings may differ from those depicted. The indicated north direction is approximate and may vary depending on the unit's placement within the master plan.

2 BED
TYPE 8 UNIT PLAN

INTERNAL AREA - 603 SQ.FT.
BALCONY AREA - 58 SQ.FT.
TOTAL AREA - 660 SQ.FT.



VIEWS
Dubai Frame
This Unit plan is applicable to 208, 308, 408, 508, 608, 708 & 808



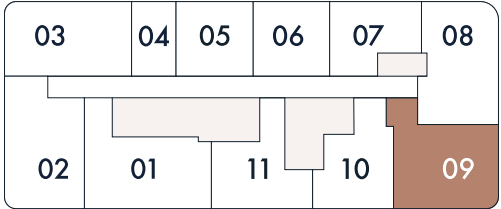
Disclaimer: The above plans are indicative and provided strictly for reference. All plans, details, specifications, and unit orientations are subject to revision and change at the exclusive discretion of the developer or seller without prior notice, obligation or liability. Images, features, finishes, furnishings, views, and scales are illustrative and may not accurately reflect the final product. Actual areas, orientations, dimensions, layouts, materials, and fittings may differ from those depicted. The indicated north direction is approximate and may vary depending on the unit's placement within the master plan.

2 BED
TYPE 9 UNIT PLAN

INTERNAL AREA - 586 SQ.FT.
BALCONY AREA - 81 SQ.FT.
TOTAL AREA - 667 SQ.FT.



VIEWS
Dubai Frame + Skyline
This Unit plan is applicable to 209, 309, 409,
509, 609, 709 & 809



Disclaimer: The above plans are indicative and provided strictly for reference. All plans, details, specifications, and unit orientations are subject to revision and change at the exclusive discretion of the developer or seller without prior notice, obligation or liability. Images, features, finishes, furnishings, views, and scales are illustrative and may not accurately reflect the final product. Actual areas, orientations, dimensions, layouts, materials, and fittings may differ from those depicted. The indicated north direction is approximate and may vary depending on the unit's placement within the master plan.