

# Meriden

B E A C H   R E S I D E N C E S

*Timeless Island Living*

DEVELOPED BY

GREEN  
HORIZON  
DEVELOPMENTS



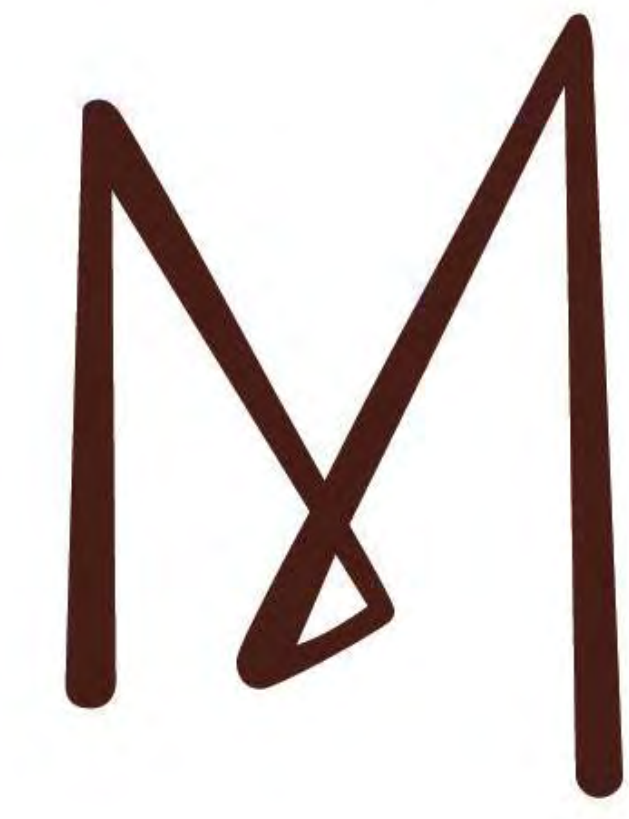


# *Floor Plans*

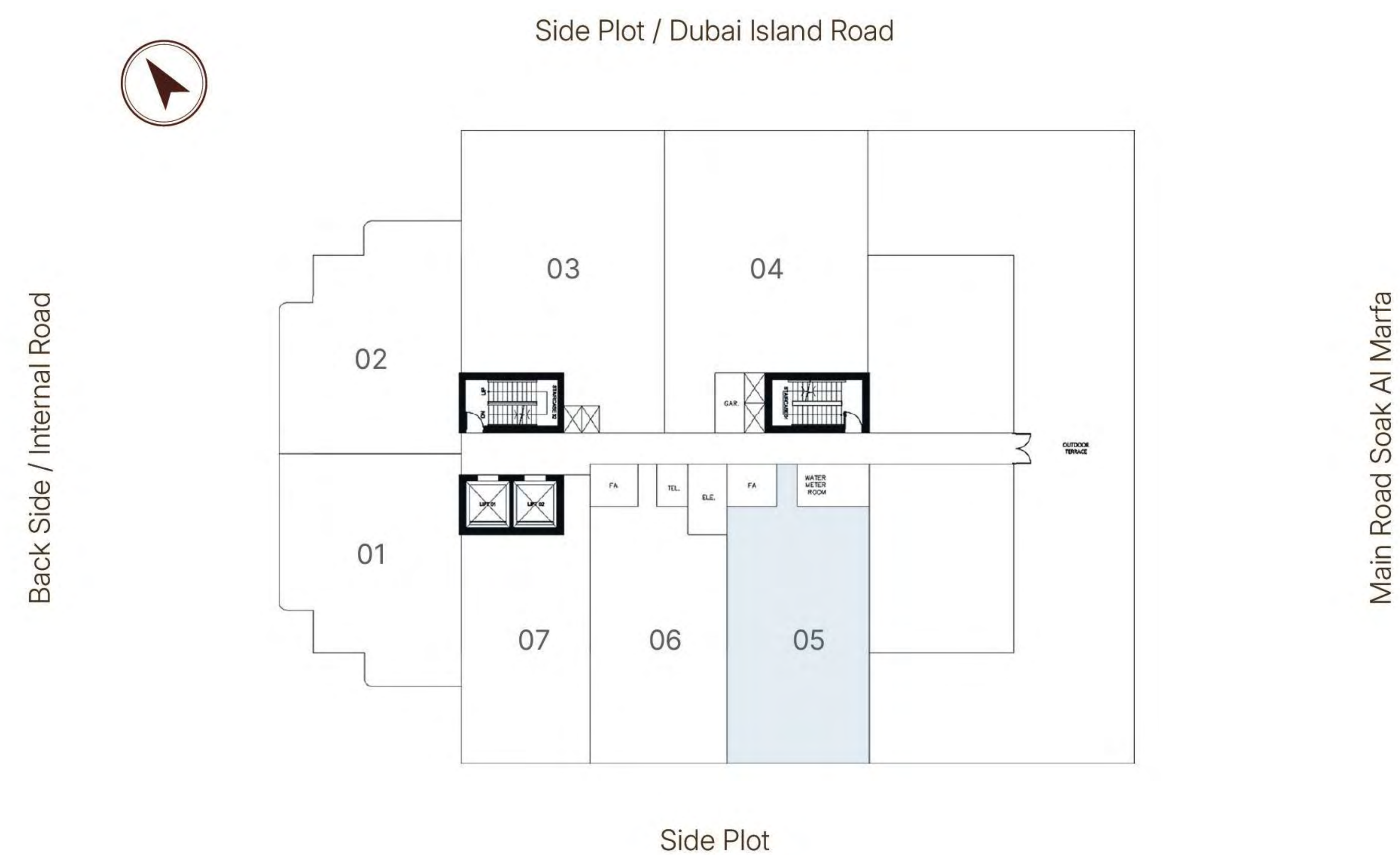
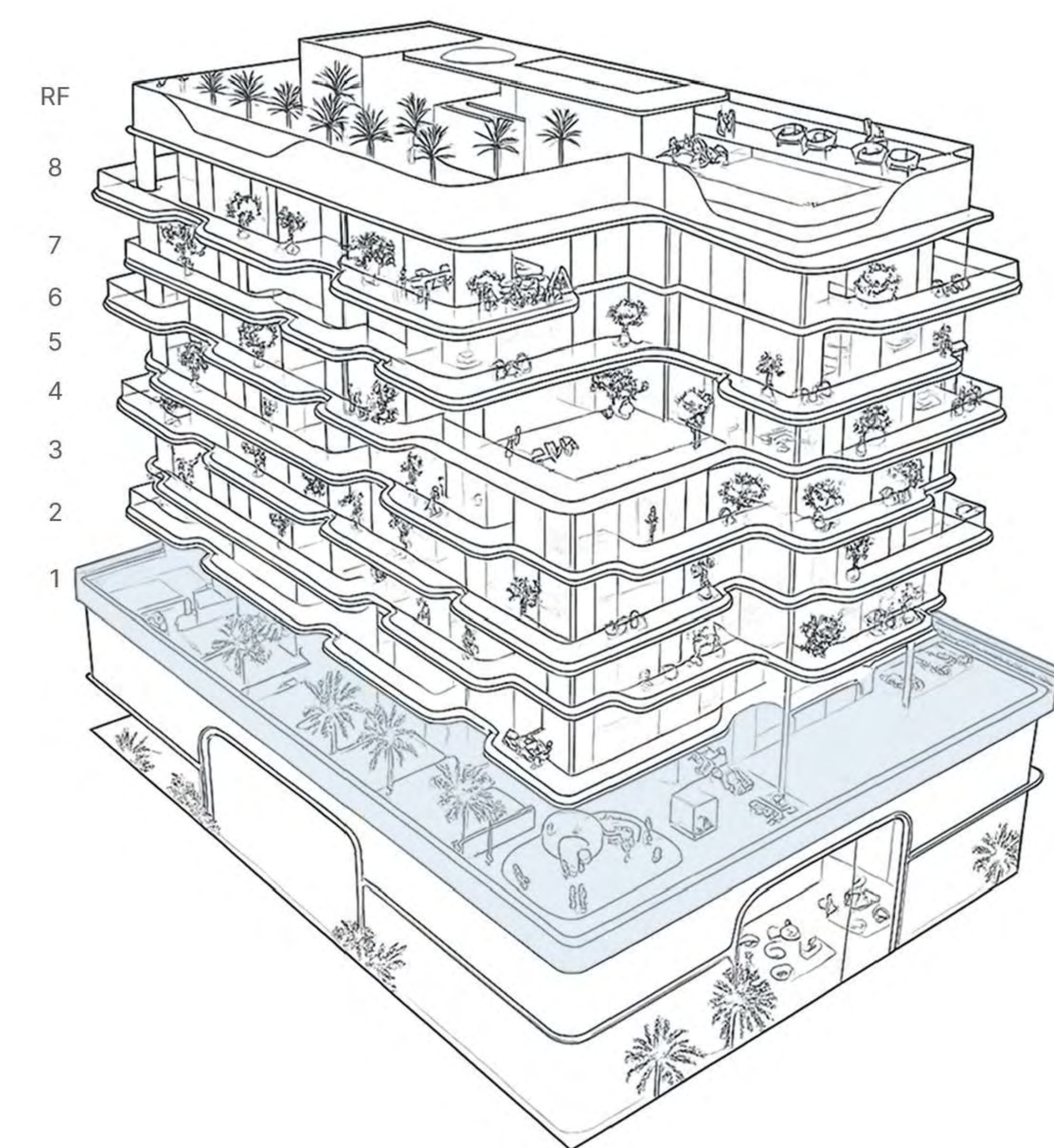








1 Bedroom Apartment Type A

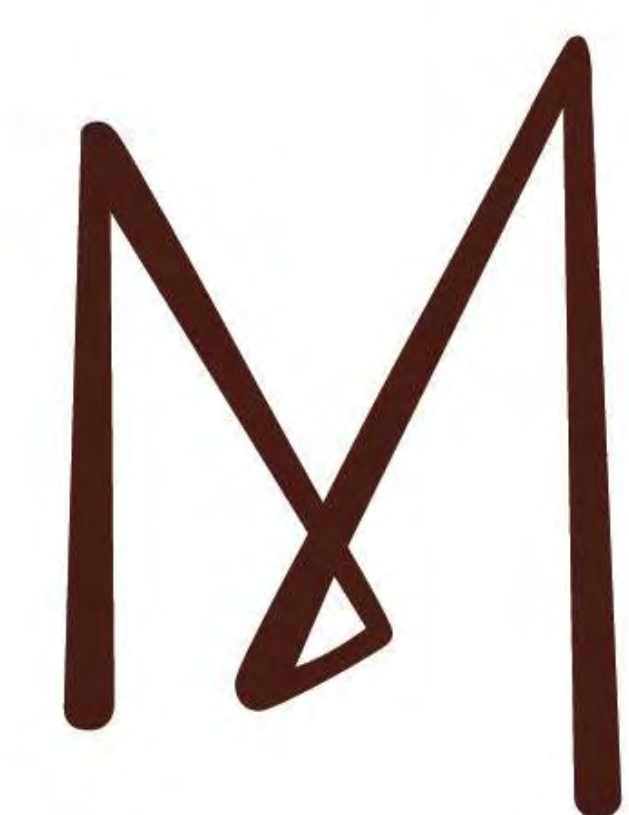


Unit No	05	Floor No	1
Suite Area	775 Sq.ft		72 Sq.m
Balcony Area	568 Sq.ft		53 Sq.m
Total Area	1344 Sq.ft		125 Sq.m

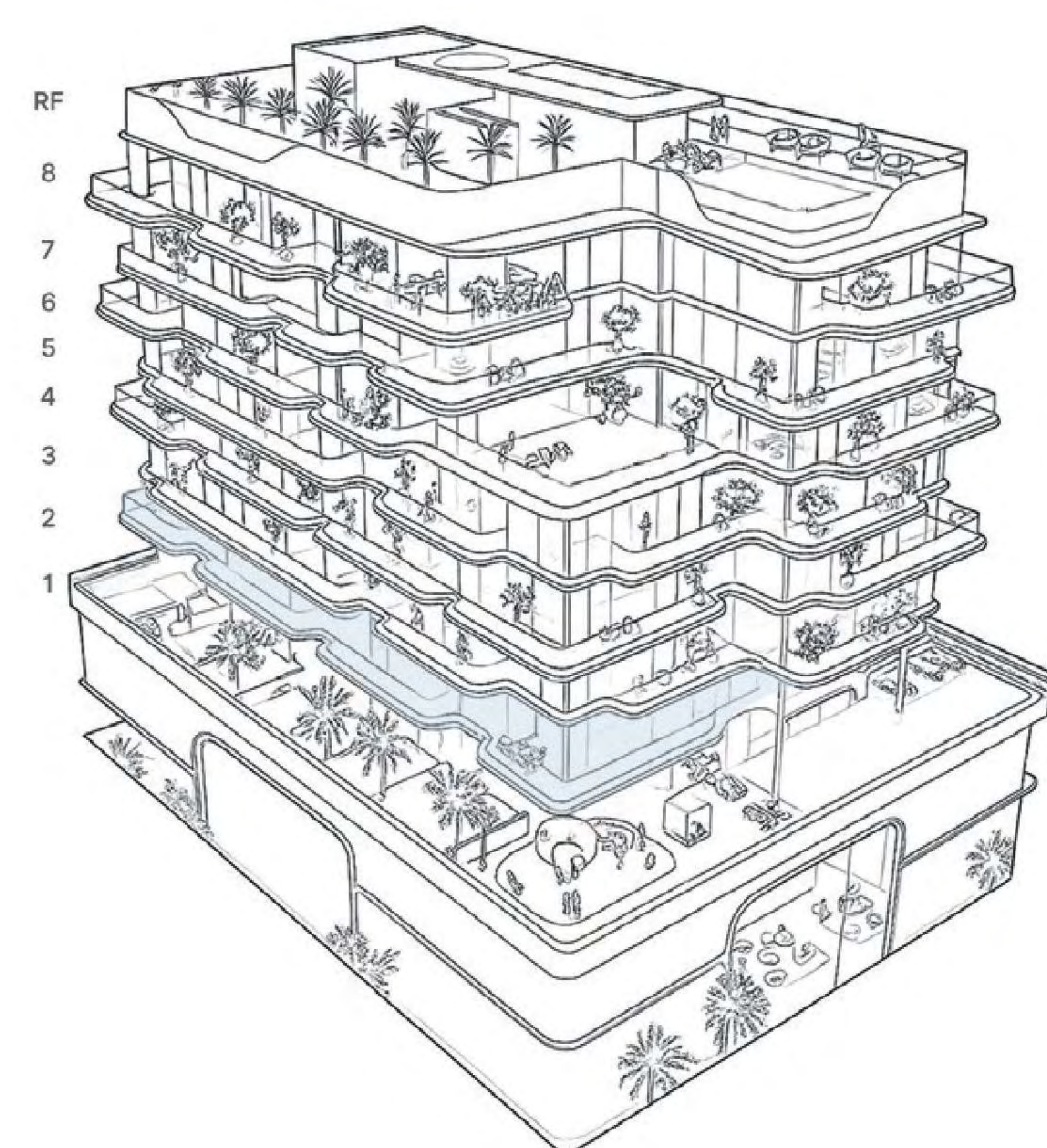


All drawings and dimensions are approximate. Drawings are not to scale and are subject to change without notice. The developer reserves the right to make revisions. The units are measured at typical floor in the building and columns may vary in size depending on the floor level. The furnishings and accessories shown are for representation only. The length and width of the Unit and balcony varies depending on which floor and which orientation the unit is located within the building to comply with the building authority regulations. Apartment unit sizes may vary. Actual unit sizes will be reflected on the Sales and Purchase Agreement.





## 2 Bedroom Apartment Type D1

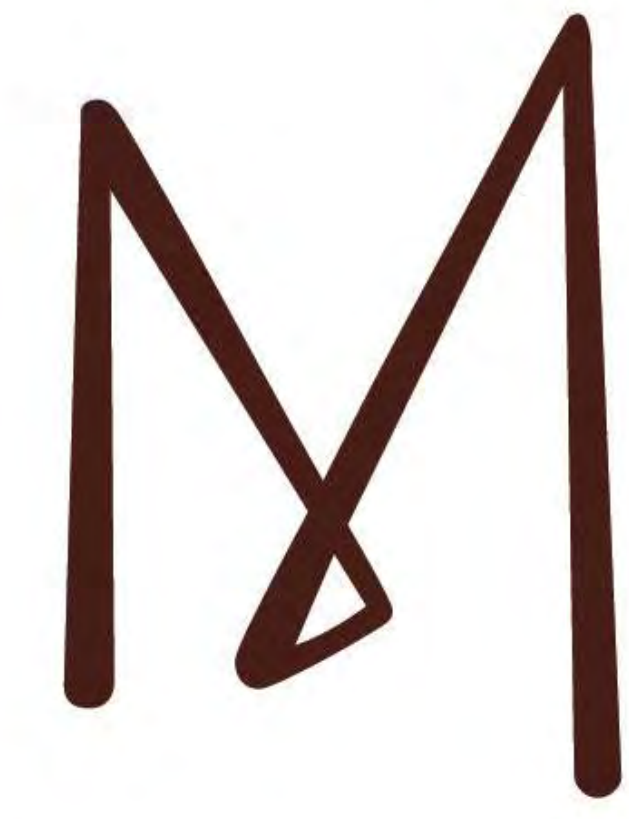


Unit No	05 & 06	Floor No	2
Suite Area	1011 Sq.ft	94 Sq.m	
Balcony Area	358/331 Sq.ft	33/31 Sq.m	
Total Area	1369/1342 Sq.ft	127/125 Sq.m	

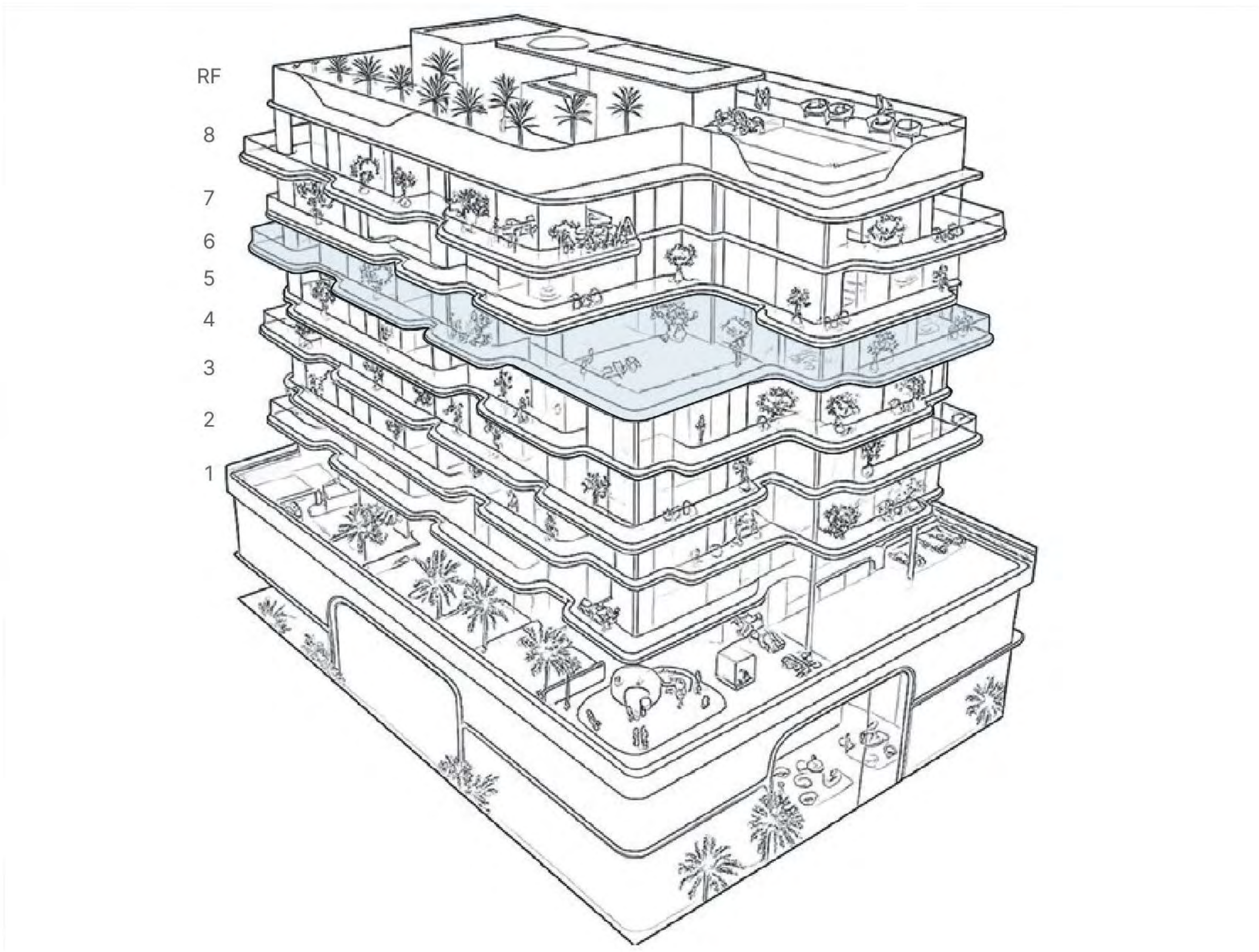


All drawings and dimensions are approximate. Drawings are not to scale and are subject to change without notice. The developer reserves the right to make revisions. The units are measured at typical floor in the building and columns may vary in size depending on the floor level. The furnishings and accessories shown are for representation only. The length and width of the Unit and balcony varies depending on which floor and which orientation the unit is located within the building to comply with the building authority regulations. Apartment unit sizes may vary. Actual unit sizes will be reflected on the Sales and Purchase Agreement.





3 Bedroom Apartment Type B1



Unit No	05	Floor No	6
Suite Area	1546 Sq.ft	144 Sq.m	
Balcony Area	957 Sq.ft	89 Sq.m	
Total Area	2503 Sq.ft	233 Sq.m	

All drawings and dimensions are approximate. Drawings are not to scale and are subject to change without notice. The developer reserves the right to make revisions. The units are measured at typical floor in the building and columns may vary in size depending on the floor level. The furnishings and accessories shown are for representation only. The length and width of the Unit and balcony varies depending on which floor and which orientation the unit is located within the building to comply with the building authority regulations. Apartment unit sizes may vary. Actual unit sizes will be reflected on the Sales and Purchase Agreement.





*DEVELOPER PROFILE*

# GREEN HORIZON

DEVELOPMENTS

**ROOTED IN QUALITY, DEFINED BY CRAFT.**

With 15+ years of experience across the UK and UAE, Green Horizon stands for timeless design and exceptional finish. From boutique hotels in London to residences in Dubai, their portfolio reflects a commitment to precision, sustainability, and artistry. Their 200,000 sq. ft. interiors facility in Ras Al Khaimah, Westwood Interiors ensures every project is built, finished, and furnished to European standards. With over 1,000 homes crafted and 7 projects delivered ahead of schedule, Green Horizon continues to shape communities where design and durability coexist.