



SEASIDE LIVING

# sunstone

AL REEM ISLAND





# FLOORPLAN

## 1-Bedroom

Type 1



Plot Area	SQM	SQFT
Suite area	88 m <sup>2</sup>	947 ft <sup>2</sup>
Balcony area	13 m <sup>2</sup>	140 ft <sup>2</sup>
Total Built-Up Area	101 m <sup>2</sup>	1,087 ft <sup>2</sup>

## 1-Bedroom

Type 2



Plot Area	SQM	SQFT
Suite area	85 m <sup>2</sup>	915 ft <sup>2</sup>
Balcony area	14 m <sup>2</sup>	151 ft <sup>2</sup>
Total Built-Up Area	99 m <sup>2</sup>	1,066 ft <sup>2</sup>

All images, renderings, floorplans, features, specifications, and details included in this brochure are for illustrative purposes only and are subject to change without prior notice. The representations herein are based on preliminary conceptual and schematic designs and are not to scale. Actual dimensions, areas, finishes, fittings, materials, specifications, configurations, and landscaping may vary upon final construction and detailed design development. Residential units are sold as unfurnished unless otherwise explicitly stated in the Sale and Purchase Agreement (SPA). Any furnishings, pools, landscaping elements, or outbuildings (including but not limited to majlis, driver's rooms, or summer houses) shown are indicative and not included in the sale unless specified. Masterplans, development layouts, road alignments, and access routes illustrated are indicative only and may be revised as required to comply with regulatory approvals, permit conditions, technical requirements, or at the sole discretion of IMKAN. No representation or warranty is made or implied as to the final position, scale, or proximity of any elements depicted. The SPA shall take precedence and will contain the final and binding terms of sale. IMKAN reserves the absolute right to modify, amend, or withdraw any aspect of the development at any time without incurring any liability.

# FLOORPLAN

## 1-Bedroom

Type 3



Plot Area	SQM	SQFT
Suite area	91 m <sup>2</sup>	980 ft <sup>2</sup>
Balcony area	15 m <sup>2</sup>	161 ft <sup>2</sup>
Total Built-Up Area	106 m <sup>2</sup>	1,141 ft <sup>2</sup>

All images, renderings, floorplans, features, specifications, and details included in this brochure are for illustrative purposes only and are subject to change without prior notice. The representations herein are based on preliminary conceptual and schematic designs and are not to scale. Actual dimensions, areas, finishes, fittings, materials, specifications, configurations, and landscaping may vary upon final construction and detailed design development. Residential units are sold as unfurnished unless otherwise explicitly stated in the Sale and Purchase Agreement (SPA). Any furnishings, pools, landscaping elements, or outbuildings (including but not limited to majlis, driver's rooms, or summer houses) shown are indicative and not included in the sale unless specified. Masterplans, development layouts, road alignments, and access routes illustrated are indicative only and may be revised as required to comply with regulatory approvals, permit conditions, technical requirements, or at the sole discretion of IMKAN. No representation or warranty is made or implied as to the final position, scale, or proximity of any elements depicted. The SPA shall take precedence and will contain the final and binding terms of sale. IMKAN reserves the absolute right to modify, amend, or withdraw any aspect of the development at any time without incurring any liability.





# FLOORPLAN

## 2-Bedroom

Type 1



Plot Area	SQM	SQFT
Suite area	128 m <sup>2</sup>	1,378 ft <sup>2</sup>
Balcony area	23 m <sup>2</sup>	248 ft <sup>2</sup>
Total Built-Up Area	151 m <sup>2</sup>	1,625 ft <sup>2</sup>

## 2-Bedroom + 1

Type 2



Plot Area	SQM	SQFT
Suite area	144 m <sup>2</sup>	1,550 ft <sup>2</sup>
Balcony area	40 m <sup>2</sup>	431 ft <sup>2</sup>
Total Built-Up Area	184 m <sup>2</sup>	1,981 ft <sup>2</sup>

All images, renderings, floorplans, features, specifications, and details included in this brochure are for illustrative purposes only and are subject to change without prior notice. The representations herein are based on preliminary conceptual and schematic designs and are not to scale. Actual dimensions, areas, finishes, fittings, materials, specifications, configurations, and landscaping may vary upon final construction and detailed design development. Residential units are sold as unfurnished unless otherwise explicitly stated in the Sale and Purchase Agreement (SPA). Any furnishings, pools, landscaping elements, or outbuildings (including but not limited to majlis, driver's rooms, or summer houses) shown are indicative and not included in the sale unless specified. Masterplans, development layouts, road alignments, and access routes illustrated are indicative only and may be revised as required to comply with regulatory approvals, permit conditions, technical requirements, or at the sole discretion of IMKAN. No representation or warranty is made or implied as to the final position, scale, or proximity of any elements depicted. The SPA shall take precedence and will contain the final and binding terms of sale. IMKAN reserves the absolute right to modify, amend, or withdraw any aspect of the development at any time without incurring any liability.

2-Bedroom + 1

Type 3



Plot Area	SQM	SQFT
Suite area	132 m <sup>2</sup>	1,421 ft <sup>2</sup>
Balcony area	22 m <sup>2</sup>	237 ft <sup>2</sup>
Total Built-Up Area	154 m <sup>2</sup>	1,658 ft <sup>2</sup>

2-Bedroom

Type 4



Plot Area	SQM	SQFT
Suite area	133 m <sup>2</sup>	1,432 ft <sup>2</sup>
Balcony area	11 m <sup>2</sup>	118 ft <sup>2</sup>
Total Built-Up Area	144 m <sup>2</sup>	1,550 ft <sup>2</sup>

All images, renderings, floorplans, features, specifications, and details included in this brochure are for illustrative purposes only and are subject to change without prior notice. The representations herein are based on preliminary conceptual and schematic designs and are not to scale. Actual dimensions, areas, finishes, fittings, materials, specifications, configurations, and landscaping may vary upon final construction and detailed design development. Residential units are sold as unfurnished unless otherwise explicitly stated in the Sale and Purchase Agreement (SPA). Any furnishings, pools, landscaping elements, or outbuildings (including but not limited to majlis, driver's rooms, or summer houses) shown are indicative and not included in the sale unless specified. Masterplans, development layouts, road alignments, and access routes illustrated are indicative only and may be revised as required to comply with regulatory approvals, permit conditions, technical requirements, or at the sole discretion of IMKAN. No representation or warranty is made or implied as to the final position, scale, or proximity of any elements depicted. The SPA shall take precedence and will contain the final and binding terms of sale. IMKAN reserves the absolute right to modify, amend, or withdraw any aspect of the development at any time without incurring any liability.



2-Bedroom + 1

Type 5



Plot Area	SQM	SQFT
Suite area	154 m <sup>2</sup>	1,658 ft <sup>2</sup>
Balcony area	33 m <sup>2</sup>	355 ft <sup>2</sup>
Total Built-Up Area	187 m <sup>2</sup>	2,013 ft <sup>2</sup>

2 -Bedroom

Type 6



Plot Area	SQM	SQFT
Suite area	126 m <sup>2</sup>	1,356 ft <sup>2</sup>
Balcony area	17 m <sup>2</sup>	183 ft <sup>2</sup>
Total Built-Up Area	143 m <sup>2</sup>	1,539 ft <sup>2</sup>

All images, renderings, floorplans, features, specifications, and details included in this brochure are for illustrative purposes only and are subject to change without prior notice. The representations herein are based on preliminary conceptual and schematic designs and are not to scale. Actual dimensions, areas, finishes, fittings, materials, specifications, configurations, and landscaping may vary upon final construction and detailed design development. Residential units are sold as unfurnished unless otherwise explicitly stated in the Sale and Purchase Agreement (SPA). Any furnishings, pools, landscaping elements, or outbuildings (including but not limited to majlis, driver's rooms, or summer houses) shown are indicative and not included in the sale unless specified. Masterplans, development layouts, road alignments, and access routes illustrated are indicative only and may be revised as required to comply with regulatory approvals, permit conditions, technical requirements, or at the sole discretion of IMKAN. No representation or warranty is made or implied as to the final position, scale, or proximity of any elements depicted. The SPA shall take precedence and will contain the final and binding terms of sale. IMKAN reserves the absolute right to modify, amend, or withdraw any aspect of the development at any time without incurring any liability.





# FLOORPLAN

## 3-Bedroom + 1

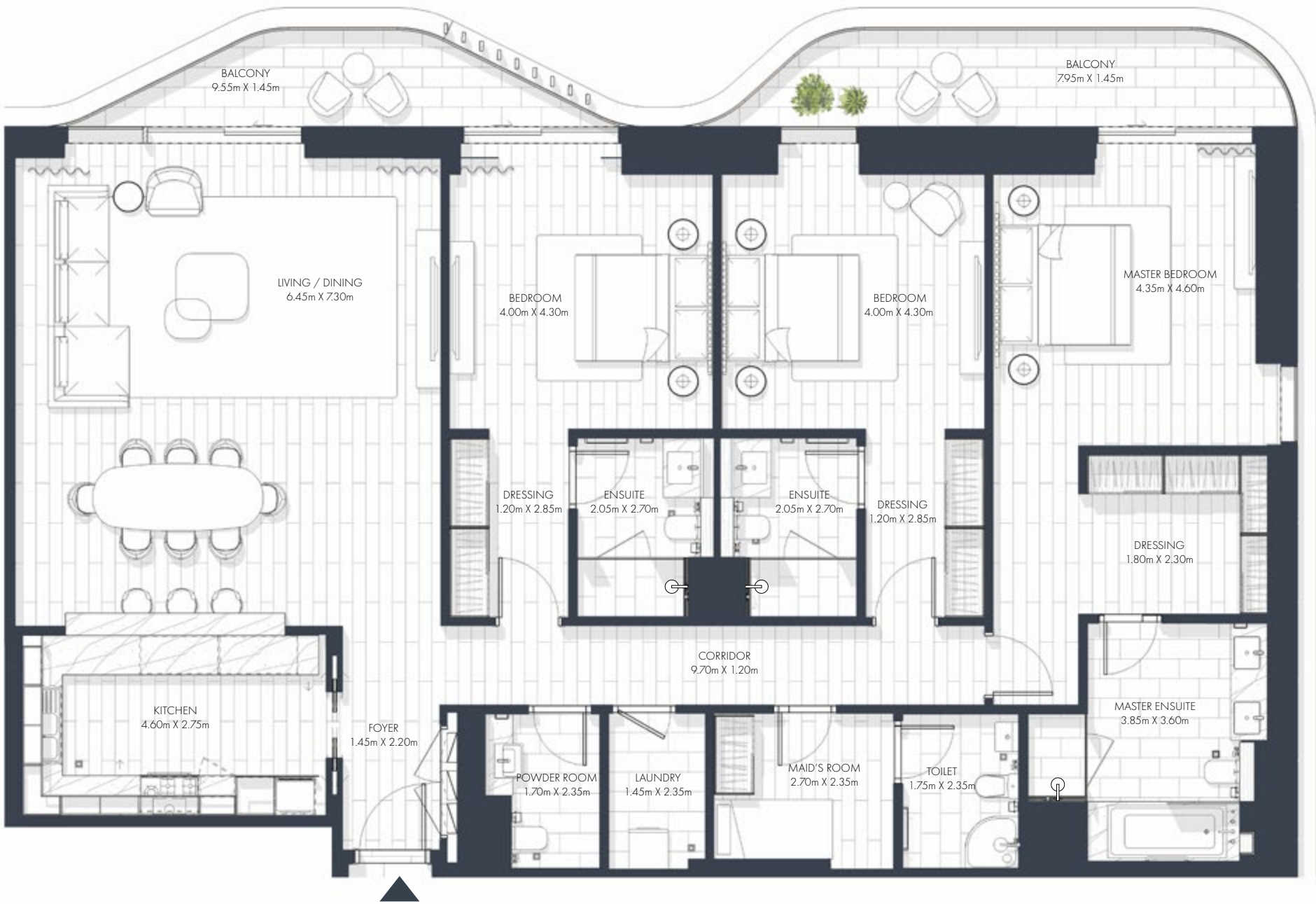
Type 1



Plot Area	SQM	SQFT
Suite area	194 m <sup>2</sup>	2,088 ft <sup>2</sup>
Balcony area	71 m <sup>2</sup>	764 ft <sup>2</sup>
Total Built-Up Area	265 m <sup>2</sup>	2,852 ft <sup>2</sup>

## 3-Bedroom + 1

Type 2



Plot Area	SQM	SQFT
Suite area	199 m <sup>2</sup>	2,142 ft <sup>2</sup>
Balcony area	31 m <sup>2</sup>	334 ft <sup>2</sup>
Total Built-Up Area	230 m <sup>2</sup>	2,476 ft <sup>2</sup>

All images, renderings, floorplans, features, specifications, and details included in this brochure are for illustrative purposes only and are subject to change without prior notice. The representations herein are based on preliminary conceptual and schematic designs and are not to scale. Actual dimensions, areas, finishes, fittings, materials, specifications, configurations, and landscaping may vary upon final construction and detailed design development. Residential units are sold as unfurnished unless otherwise explicitly stated in the Sale and Purchase Agreement (SPA). Any furnishings, pools, landscaping elements, or outbuildings (including but not limited to majlis, driver's rooms, or summer houses) shown are indicative and not included in the sale unless specified. Masterplans, development layouts, road alignments, and access routes illustrated are indicative only and may be revised as required to comply with regulatory approvals, permit conditions, technical requirements, or at the sole discretion of IMKAN. No representation or warranty is made or implied as to the final position, scale, or proximity of any elements depicted. The SPA shall take precedence and will contain the final and binding terms of sale. IMKAN reserves the absolute right to modify, amend, or withdraw any aspect of the development at any time without incurring any liability.



3- Bedroom Sky suite +1

Type 3A



Plot Area	SQM	SQFT
Suite area	225 m <sup>2</sup>	2,422 ft <sup>2</sup>
Balcony area	260 m <sup>2</sup>	2,799 ft <sup>2</sup>
Total Built-Up Area	485 m <sup>2</sup>	5,220 ft <sup>2</sup>

3- Bedroom Sky suite +1

Type 3B



Plot Area	SQM	SQFT
Suite area	225 m <sup>2</sup>	2,422 ft <sup>2</sup>
Balcony area	162 m <sup>2</sup>	1,744 ft <sup>2</sup>
Total Built-Up Area	387 m <sup>2</sup>	4,166 ft <sup>2</sup>

All images, renderings, floorplans, features, specifications, and details included in this brochure are for illustrative purposes only and are subject to change without prior notice. The representations herein are based on preliminary conceptual and schematic designs and are not to scale. Actual dimensions, areas, finishes, fittings, materials, specifications, configurations, and landscaping may vary upon final construction and detailed design development. Residential units are sold as unfurnished unless otherwise explicitly stated in the Sale and Purchase Agreement (SPA). Any furnishings, pools, landscaping elements, or outbuildings (including but not limited to majlis, driver's rooms, or summer houses) shown are indicative and not included in the sale unless specified. Masterplans, development layouts, road alignments, and access routes illustrated are indicative only and may be revised as required to comply with regulatory approvals, permit conditions, technical requirements, or at the sole discretion of IMKAN. No representation or warranty is made or implied as to the final position, scale, or proximity of any elements depicted. The SPA shall take precedence and will contain the final and binding terms of sale. IMKAN reserves the absolute right to modify, amend, or withdraw any aspect of the development at any time without incurring any liability.



3-Bedroom + 1

Type 4



Plot Area	SQM	SQFT
Suite area	195 m <sup>2</sup>	2,099 ft <sup>2</sup>
Balcony area	24 m <sup>2</sup>	258 ft <sup>2</sup>
Total Built-Up Area	219 m <sup>2</sup>	2,357 ft <sup>2</sup>

3-Bedroom + 1

Duplex



Plot Area	SQM	SQFT
Suite area	212 m <sup>2</sup>	2,282 ft <sup>2</sup>
Balcony area	13 m <sup>2</sup>	140 ft <sup>2</sup>
Total Built-Up Area	225 m <sup>2</sup>	2,422 ft <sup>2</sup>

All images, renderings, floorplans, features, specifications, and details included in this brochure are for illustrative purposes only and are subject to change without prior notice. The representations herein are based on preliminary conceptual and schematic designs and are not to scale. Actual dimensions, areas, finishes, fittings, materials, specifications, configurations, and landscaping may vary upon final construction and detailed design development. Residential units are sold as unfurnished unless otherwise explicitly stated in the Sale and Purchase Agreement (SPA). Any furnishings, pools, landscaping elements, or outbuildings (including but not limited to majlis, driver's rooms, or summer houses) shown are indicative and not included in the sale unless specified. Masterplans, development layouts, road alignments, and access routes illustrated are indicative only and may be revised as required to comply with regulatory approvals, permit conditions, technical requirements, or at the sole discretion of IMKAN. No representation or warranty is made or implied as to the final position, scale, or proximity of any elements depicted. The SPA shall take precedence and will contain the final and binding terms of sale. IMKAN reserves the absolute right to modify, amend, or withdraw any aspect of the development at any time without incurring any liability.





4-BEDROOM  
APARTMENTS

# FLOORPLAN

## 4-Bedroom + 1

Type 1



Plot Area	SQM	SQFT
Suite area	291 m <sup>2</sup>	3,132 ft <sup>2</sup>
Balcony area	61 m <sup>2</sup>	657 ft <sup>2</sup>
Total Built-Up Area	352 m <sup>2</sup>	3,789 ft <sup>2</sup>

## 4-Bedroom + 1

Duplex



Plot Area	SQM	SQFT
Suite area	229 m <sup>2</sup>	2,465 ft <sup>2</sup>
Balcony area	21 m <sup>2</sup>	226 ft <sup>2</sup>
Total Built-Up Area	250 m <sup>2</sup>	2,691 ft <sup>2</sup>

All images, renderings, floorplans, features, specifications, and details included in this brochure are for illustrative purposes only and are subject to change without prior notice. The representations herein are based on preliminary conceptual and schematic designs and are not to scale. Actual dimensions, areas, finishes, fittings, materials, specifications, configurations, and landscaping may vary upon final construction and detailed design development. Residential units are sold as unfurnished unless otherwise explicitly stated in the Sale and Purchase Agreement (SPA). Any furnishings, pools, landscaping elements, or outbuildings (including but not limited to majlis, driver's rooms, or summer houses) shown are indicative and not included in the sale unless specified. Masterplans, development layouts, road alignments, and access routes illustrated are indicative only and may be revised as required to comply with regulatory approvals, permit conditions, technical requirements, or at the sole discretion of IMKAN. No representation or warranty is made or implied as to the final position, scale, or proximity of any elements depicted. The SPA shall take precedence and will contain the final and binding terms of sale. IMKAN reserves the absolute right to modify, amend, or withdraw any aspect of the development at any time without incurring any liability.