

INIAURA

RESIDENCES
DOWNTOWN
DUBAI



FLOOR

PLANS

15TH - 18TH FLOOR PLAN

1 BEDROOM

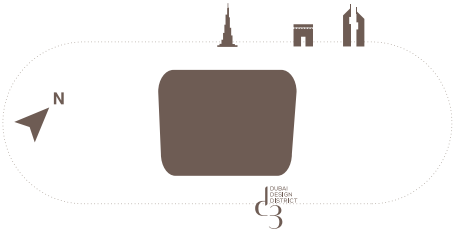
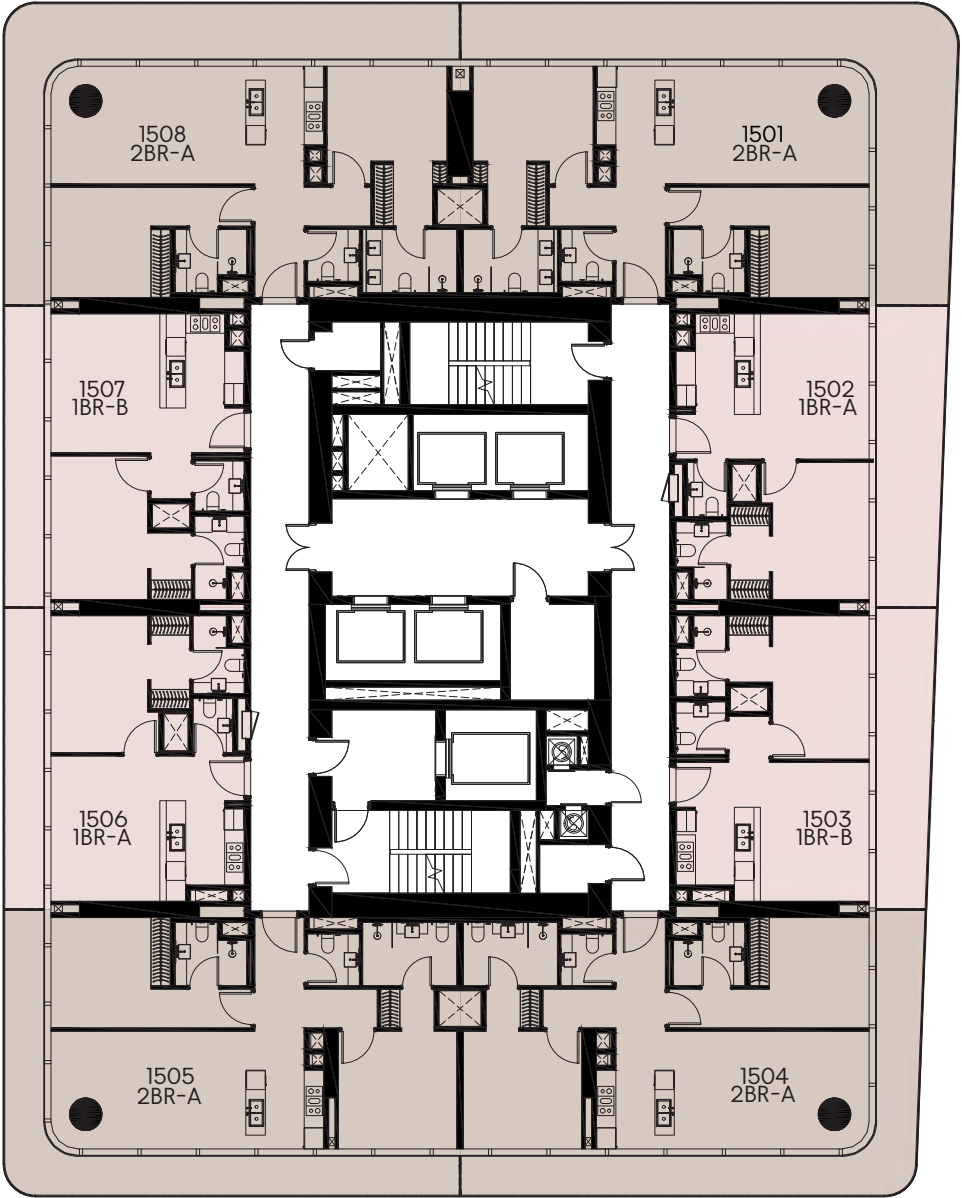
2 BEDROOM

3 BEDROOM

4 BEDROOM

5 BEDROOM

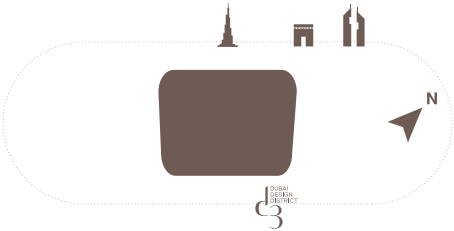
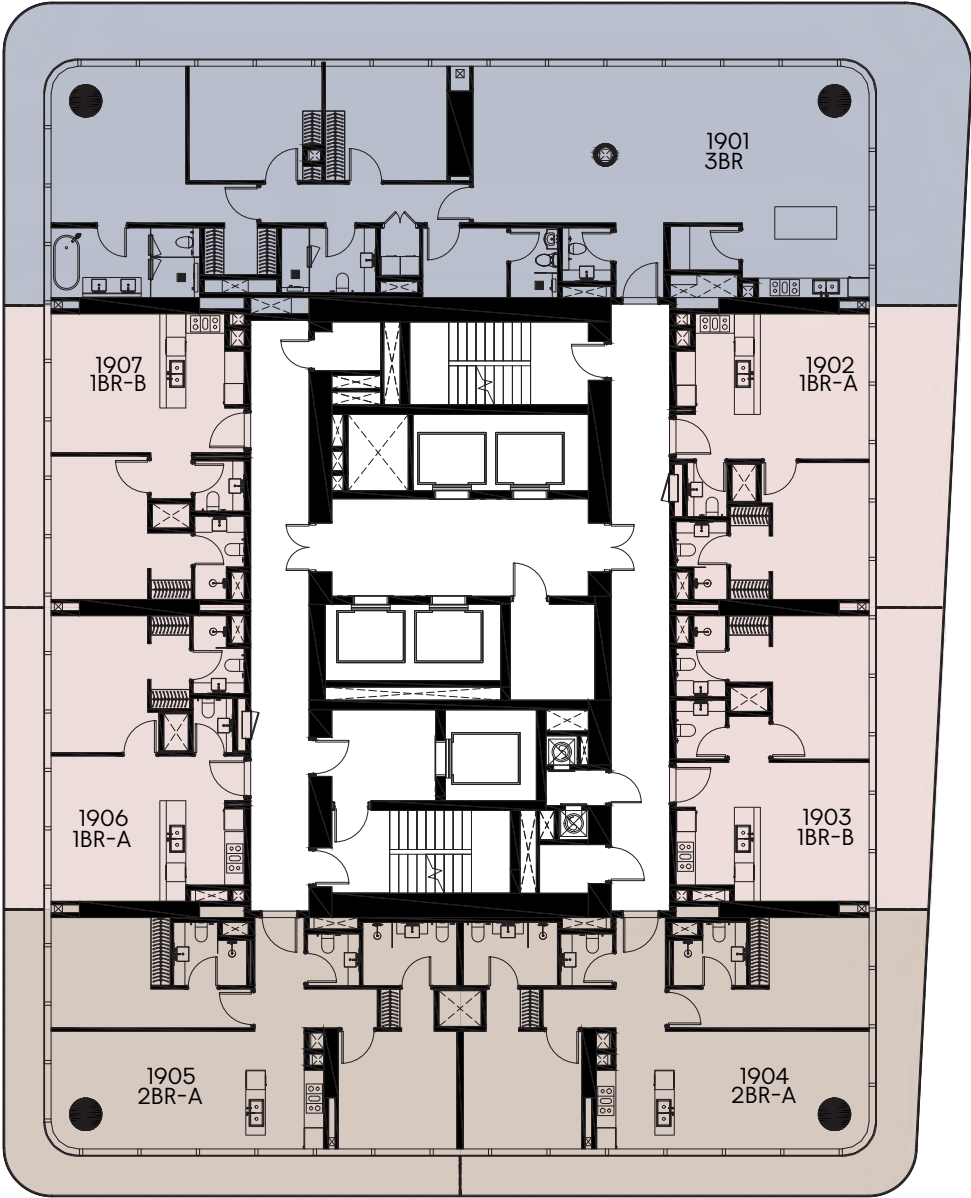
6 BEDROOM



1-Measurements are indicative 'finish to finish' in Metric & Imperial excluding construction tolerance. 2-Plot/unit dimensions may vary from brochure, and unit types/plans may exist as mirrored versions; 3-All images used are for illustrative purposes only. 4-Unless stated otherwise, all fittings and interior decorative items shown are for illustrative purposes only and are not included. 5-The developer reserves the right to make alterations, at its absolute discretion, without any liability whatsoever up to the final 'as built' status.

19TH - 22ND FLOOR PLAN

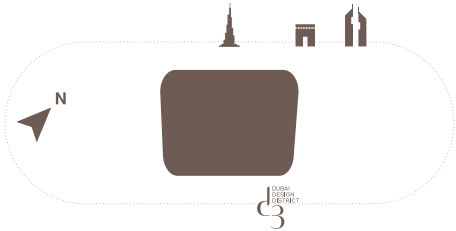
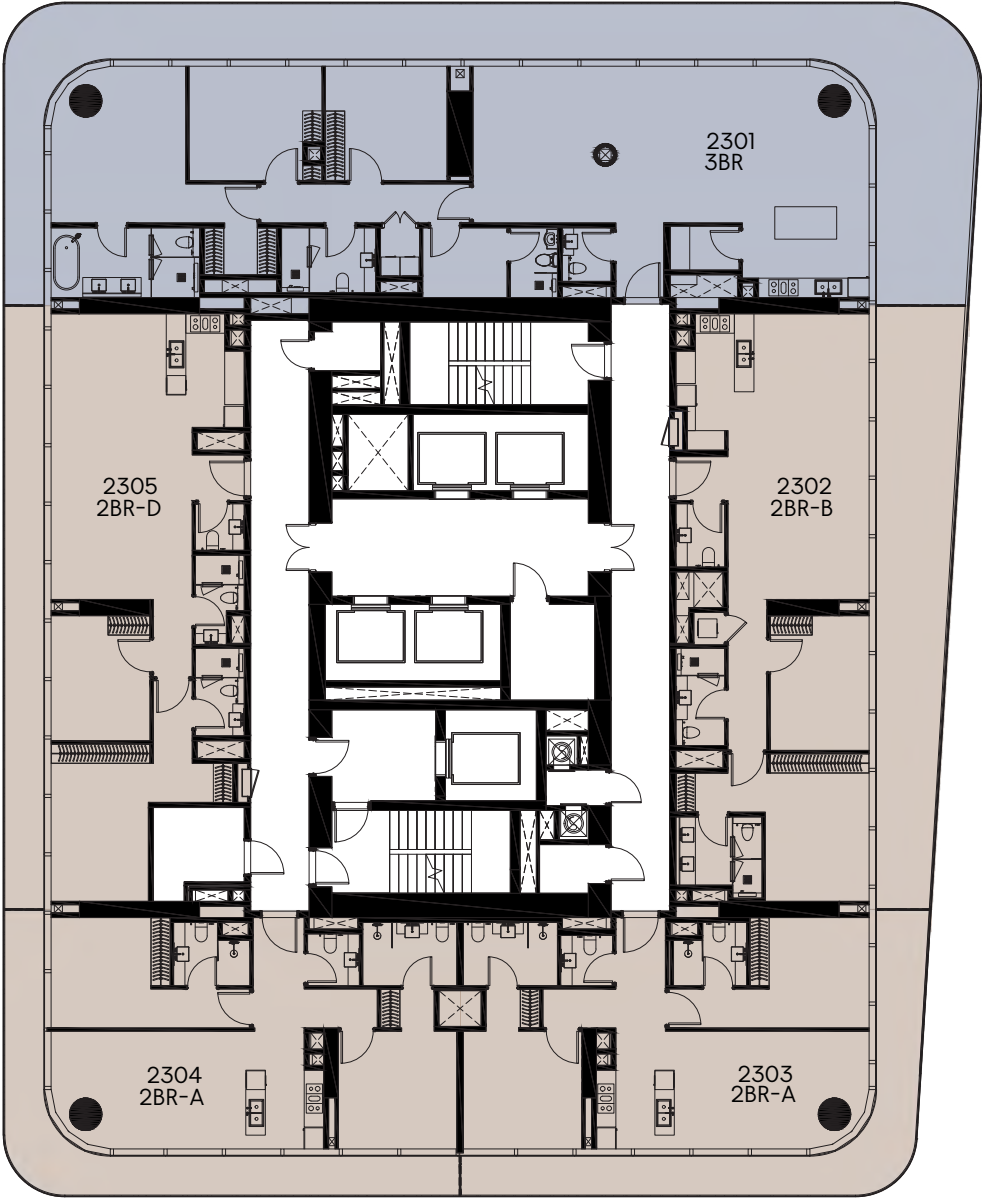
1 BEDROOM 2 BEDROOM 3 BEDROOM 4 BEDROOM 5 BEDROOM 6 BEDROOM



1-Measurements are indicative 'finish to finish' in Metric & Imperial excluding construction tolerance. 2-Plot/unit dimensions may vary from brochure, and unit types/plans may exist as mirrored versions; 3-All images used are for illustrative purposes only. 4-Unless stated otherwise, all fittings and interior decorative items shown are for illustrative purposes only and are not included. 5-The developer reserves the right to make alterations, at its absolute discretion, without any liability whatsoever up to the final 'as built' status.

23RD FLOOR PLAN

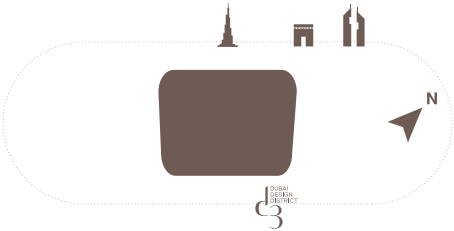
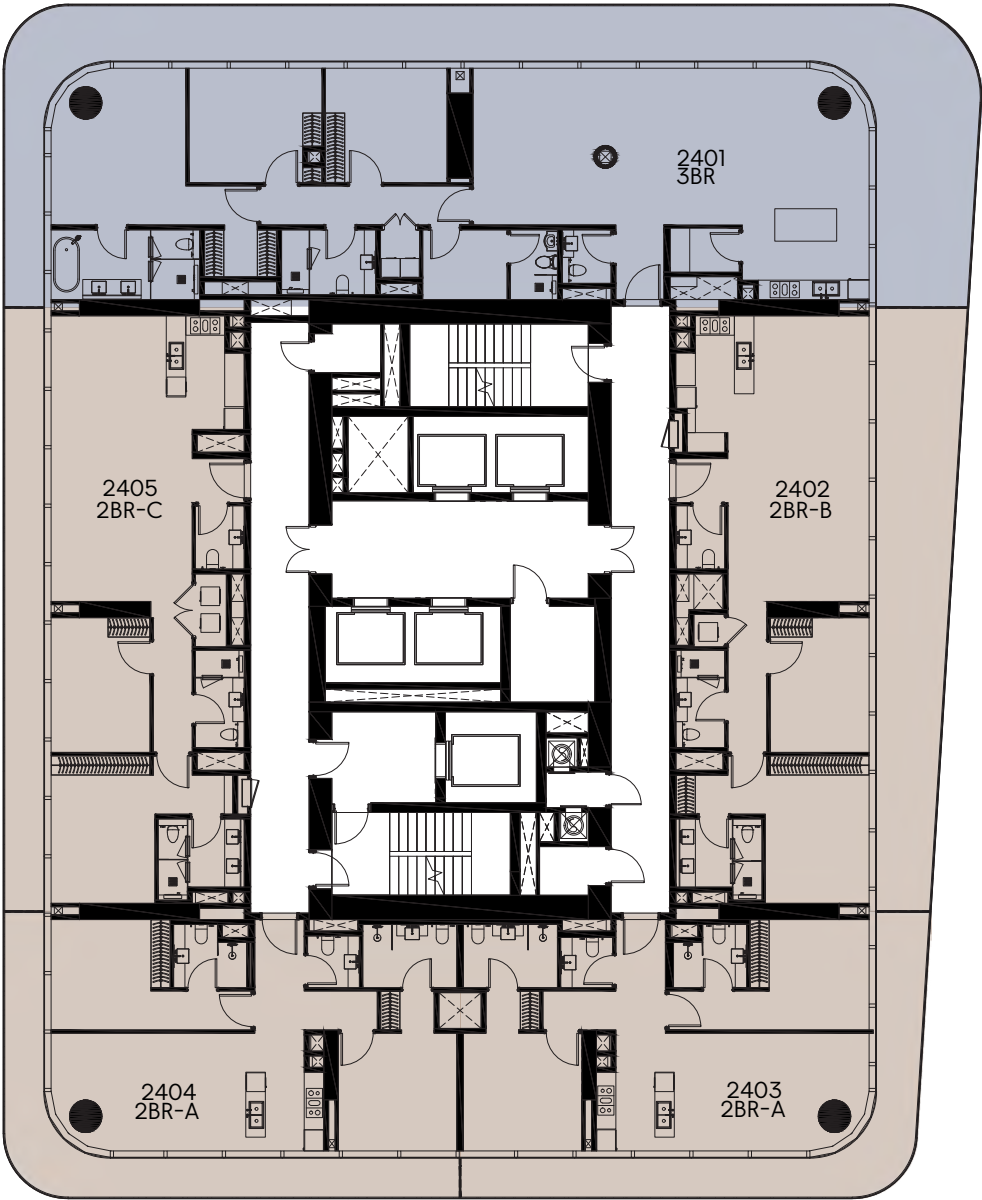
1 BEDROOM 2 BEDROOM 3 BEDROOM 4 BEDROOM 5 BEDROOM 6 BEDROOM



1-Measurements are indicative 'finish to finish' in Metric & Imperial excluding construction tolerance. 2-Plot/unit dimensions may vary from brochure, and unit types/plans may exist as mirrored versions; 3-All images used are for illustrative purposes only. 4-Unless stated otherwise, all fittings and interior decorative items shown are for illustrative purposes only and are not included. 5-The developer reserves the right to make alterations, at its absolute discretion, without any liability whatsoever up to the final 'as built' status.

24TH - 31ST FLOOR PLAN

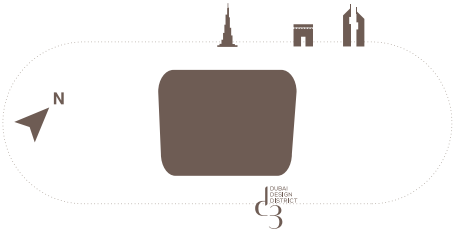
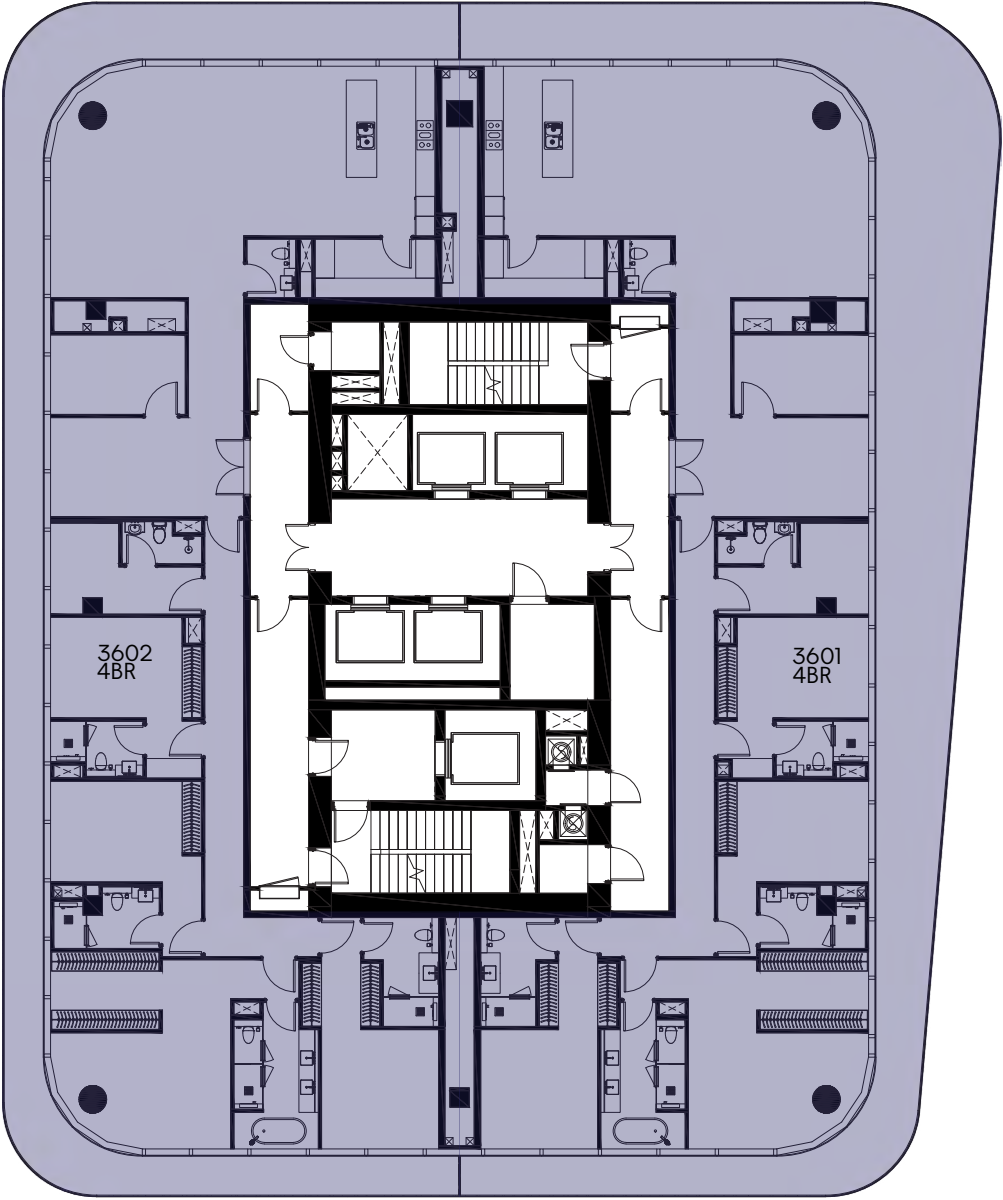
1 BEDROOM 2 BEDROOM 3 BEDROOM 4 BEDROOM 5 BEDROOM 6 BEDROOM



1-Measurements are indicative 'finish to finish' in Metric & Imperial excluding construction tolerance. 2-Plot/unit dimensions may vary from brochure, and unit types/plans may exist as mirrored versions; 3-All images used are for illustrative purposes only. 4-Unless stated otherwise, all fittings and interior decorative items shown are for illustrative purposes only and are not included. 5-The developer reserves the right to make alterations, at its absolute discretion, without any liability whatsoever up to the final 'as built' status.

36TH - 38TH FLOOR PLAN

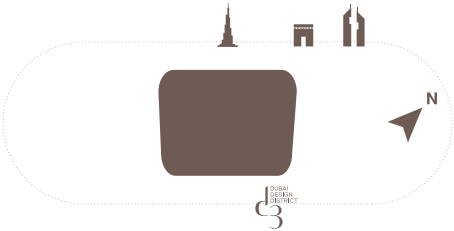
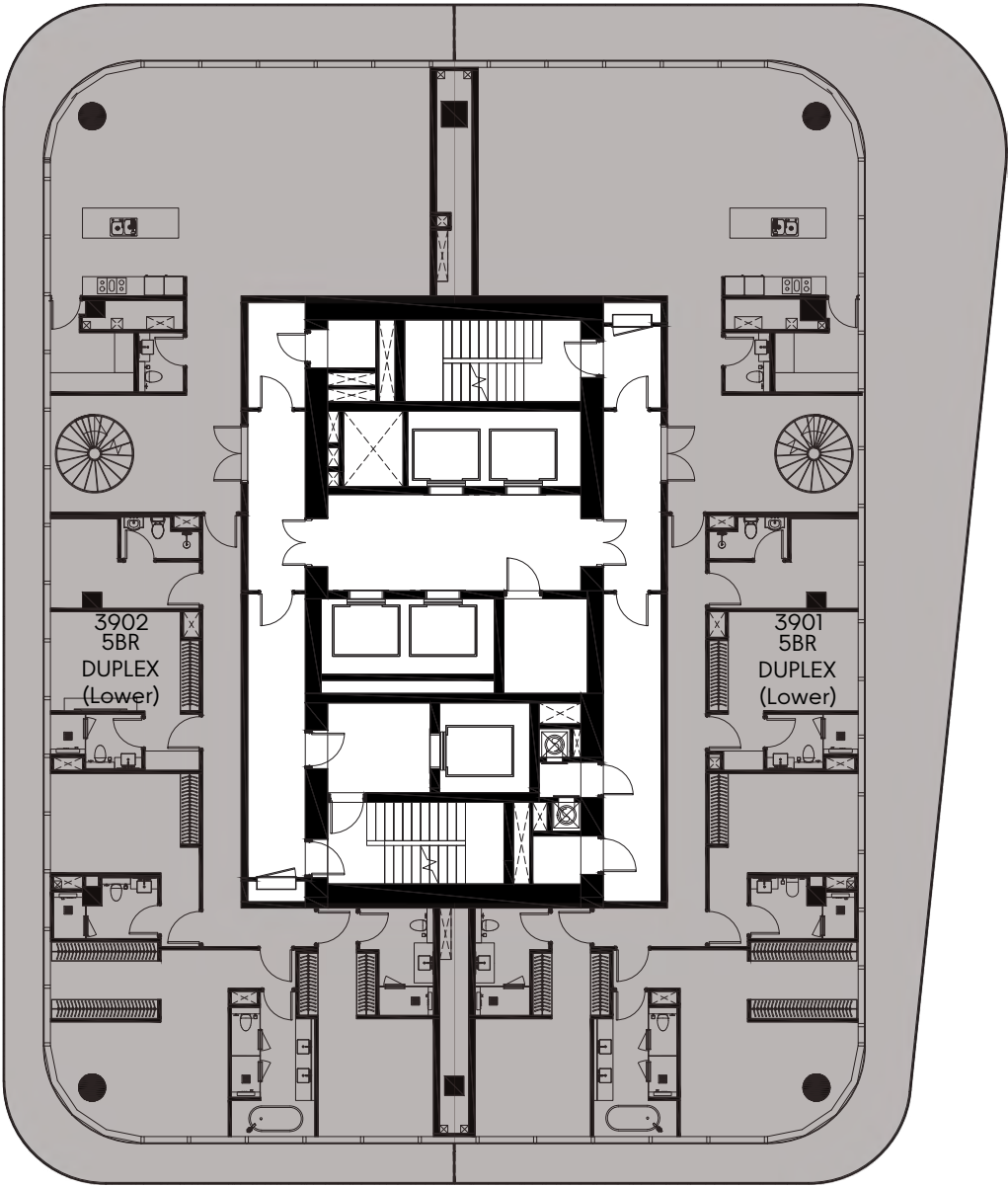
1 BEDROOM 2 BEDROOM 3 BEDROOM 4 BEDROOM 5 BEDROOM 6 BEDROOM



1-Measurements are indicative 'finish to finish' in Metric & Imperial excluding construction tolerance. 2-Plot/unit dimensions may vary from brochure, and unit types/plans may exist as mirrored versions; 3-All images used are for illustrative purposes only. 4-Unless stated otherwise, all fittings and interior decorative items shown are for illustrative purposes only and are not included. 5-The developer reserves the right to make alterations, at its absolute discretion, without any liability whatsoever up to the final 'as built' status.

39TH FLOOR PLAN

1 BEDROOM 2 BEDROOM 3 BEDROOM 4 BEDROOM 5 BEDROOM 6 BEDROOM



1-Measurements are indicative 'finish to finish' in Metric & Imperial excluding construction tolerance. 2-Plot/unit dimensions may vary from brochure, and unit types/plans may exist as mirrored versions; 3-All images used are for illustrative purposes only. 4-Unless stated otherwise, all fittings and interior decorative items shown are for illustrative purposes only and are not included. 5-The developer reserves the right to make alterations, at its absolute discretion, without any liability whatsoever up to the final 'as built' status.

40TH FLOOR PLAN

1 BEDROOM

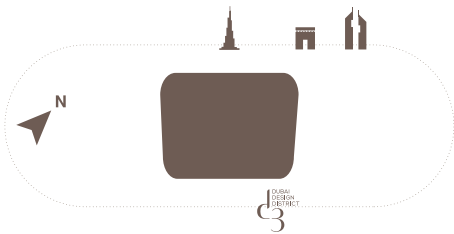
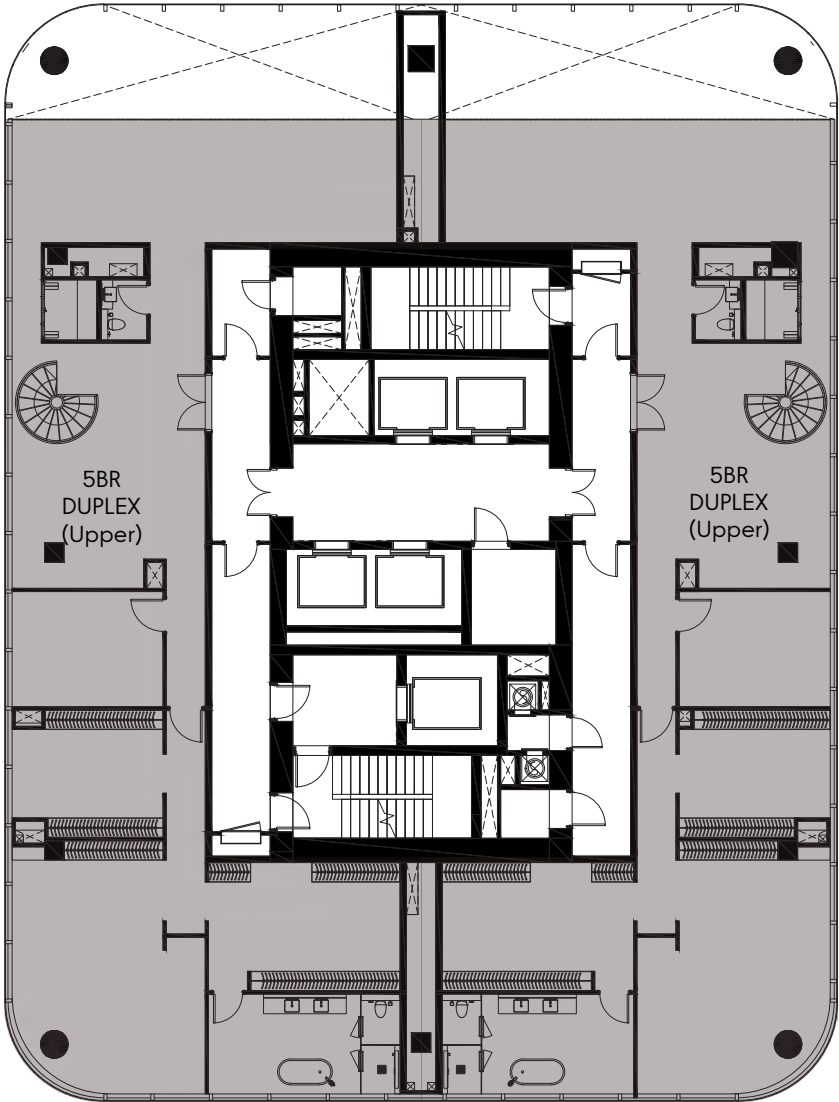
2 BEDROOM

3 BEDROOM

4 BEDROOM

5 BEDROOM

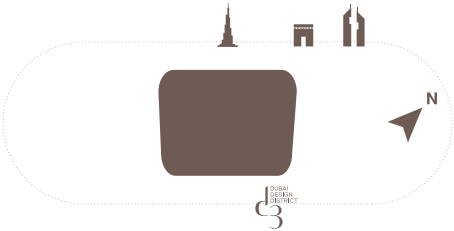
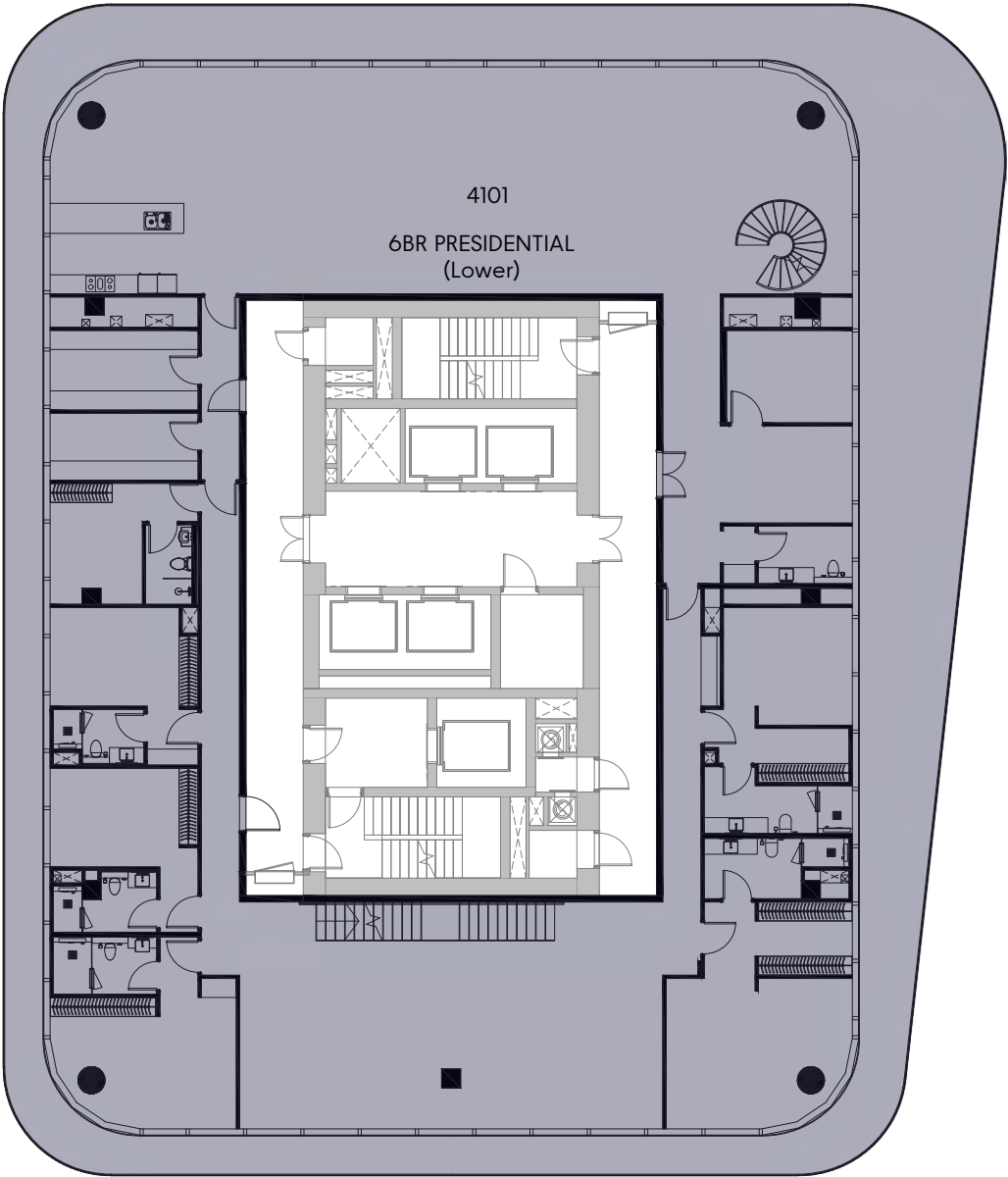
6 BEDROOM



1-Measurements are indicative 'finish to finish' in Metric & Imperial excluding construction tolerance. 2-Plot/unit dimensions may vary from brochure, and unit types/plans may exist as mirrored versions; 3-All images used are for illustrative purposes only. 4-Unless stated otherwise, all fittings and interior decorative items shown are for illustrative purposes only and are not included. 5-The developer reserves the right to make alterations, at its absolute discretion, without any liability whatsoever up to the final 'as built' status.

41ST FLOOR PLAN

1 BEDROOM 2 BEDROOM 3 BEDROOM 4 BEDROOM 5 BEDROOM 6 BEDROOM



1-Measurements are indicative 'finish to finish' in Metric & Imperial excluding construction tolerance. 2-Plot/unit dimensions may vary from brochure, and unit types/plans may exist as mirrored versions; 3-All images used are for illustrative purposes only. 4-Unless stated otherwise, all fittings and interior decorative items shown are for illustrative purposes only and are not included. 5-The developer reserves the right to make alterations, at its absolute discretion, without any liability whatsoever up to the final 'as built' status.

42ND FLOOR PLAN

1 BEDROOM

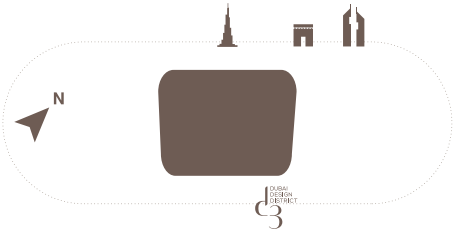
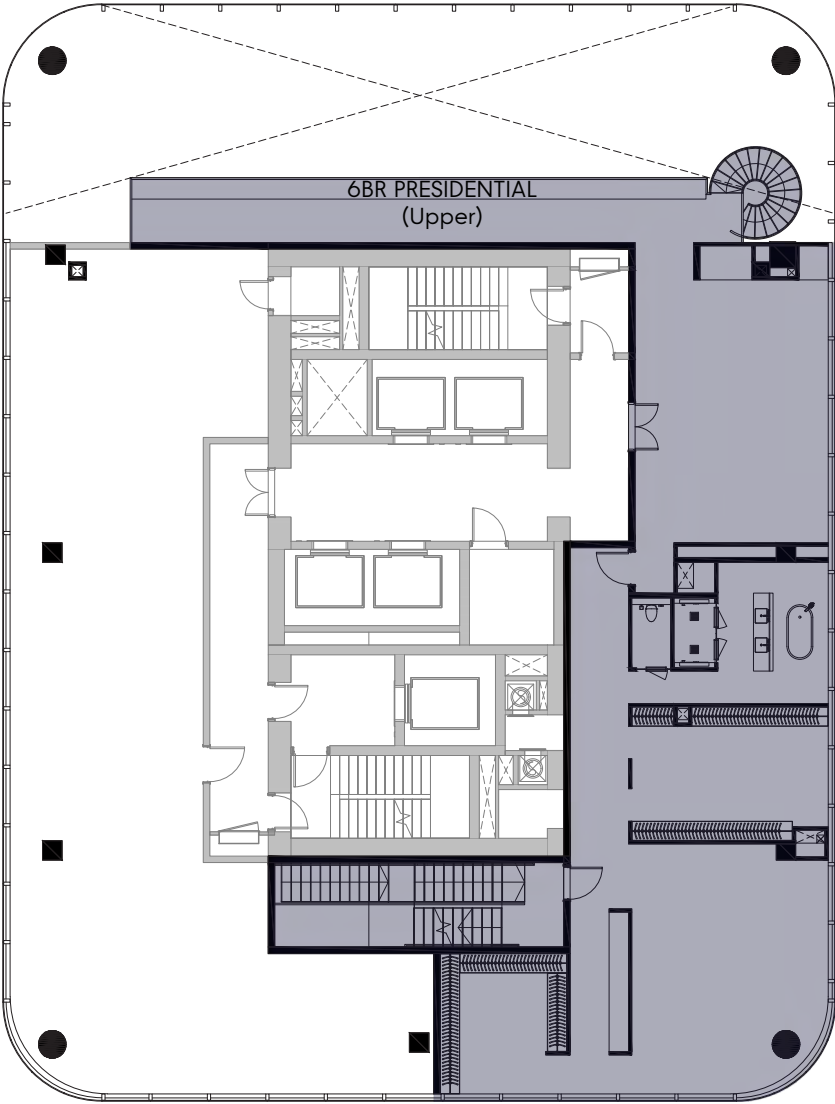
2 BEDROOM

3 BEDROOM

4 BEDROOM

5 BEDROOM

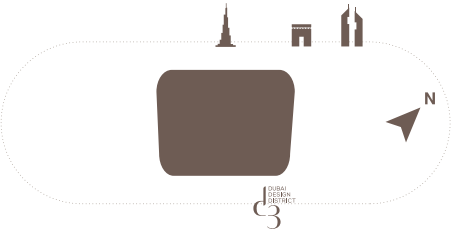
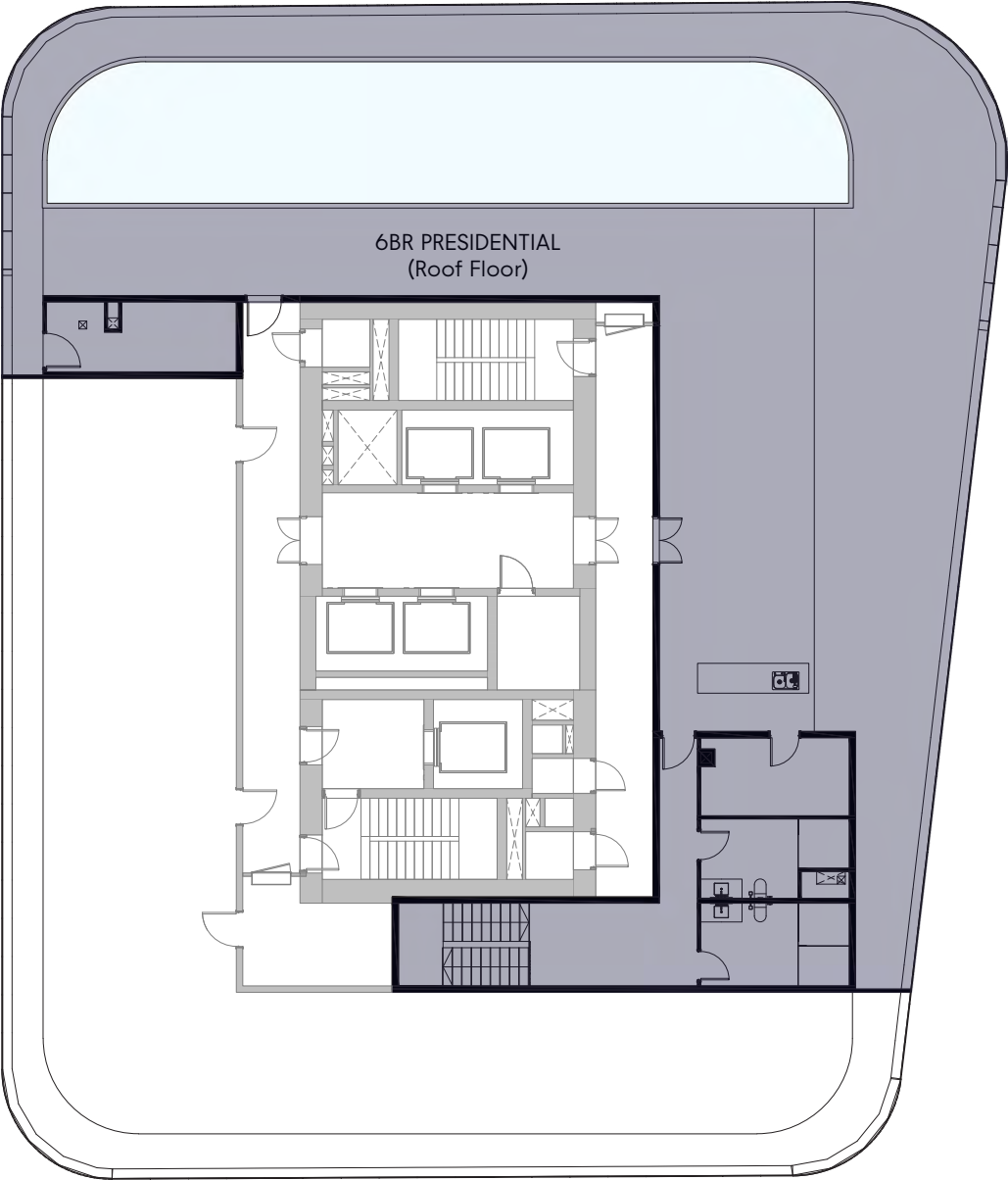
6 BEDROOM



1-Measurements are indicative 'finish to finish' in Metric & Imperial excluding construction tolerance. 2-Plot/unit dimensions may vary from brochure, and unit types/plans may exist as mirrored versions; 3-All images used are for illustrative purposes only. 4-Unless stated otherwise, all fittings and interior decorative items shown are for illustrative purposes only and are not included. 5-The developer reserves the right to make alterations, at its absolute discretion, without any liability whatsoever up to the final 'as built' status.

ROOF FLOOR PLAN

- 1 BEDROOM
- 2 BEDROOM
- 3 BEDROOM
- 4 BEDROOM
- 5 BEDROOM
- 6 BEDROOM



1-Measurements are indicative 'finish to finish' in Metric & Imperial excluding construction tolerance. 2-Plot/unit dimensions may vary from brochure, and unit types/plans may exist as mirrored versions; 3-All images used are for illustrative purposes only. 4-Unless stated otherwise, all fittings and interior decorative items shown are for illustrative purposes only and are not included. 5-The developer reserves the right to make alterations, at its absolute discretion, without any liability whatsoever up to the final 'as built' status.

RESIDENCE

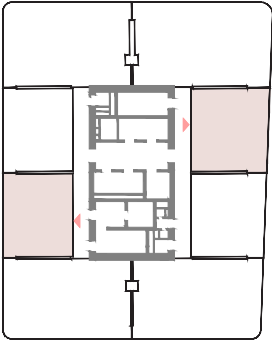
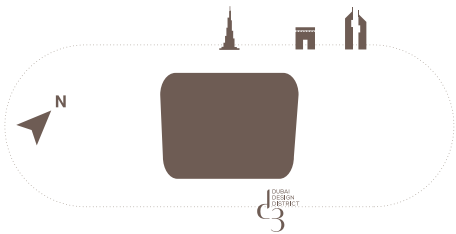
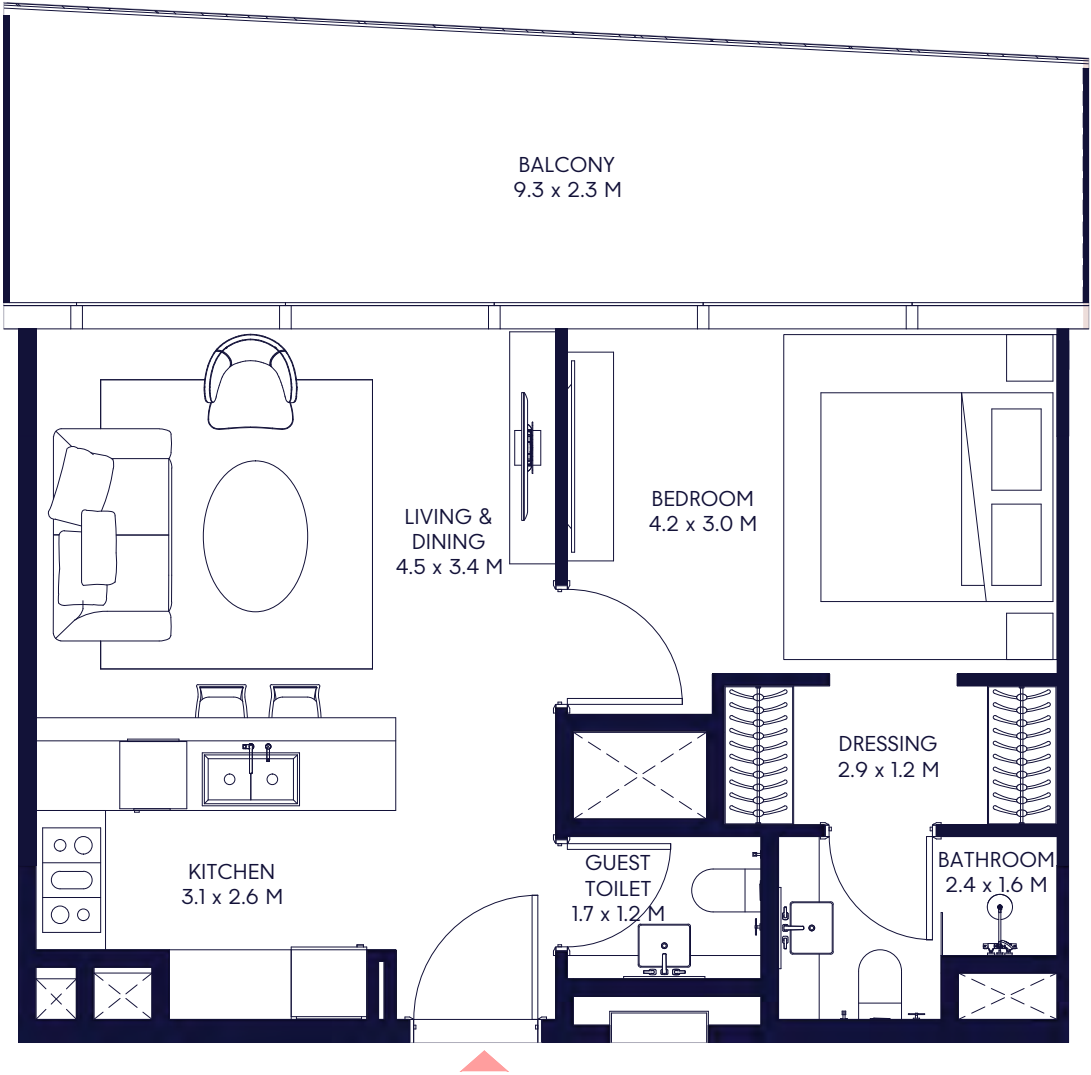
PLANS

RESIDENCE	TYPE	DESCRIPTION
THE SKY PENTHOUSE	6 Bedroom Penthouse	<p>Suspended at the tower’s pinnacle, The Sky Penthouse is the purest expression of Inaura’s vision - a residence where architecture transcends structure. Conceived as a sculptural form in the sky, it captures the equilibrium between motion and stillness, light and shadow.</p> <p>Expansive living spaces open to cinematic views of Downtown Dubai, dissolving boundaries between interior and horizon. Every surface, curve and reflection is tuned to clarity - a choreography of materials that breathe with the changing light. Private wellness zones, sky terraces and immersive suites create a complete environment for restoration and retreat. The Sky Penthouse is not a home, but a state of elevation - living in its rarest form.</p>
RESIDENCE	TYPE	DESCRIPTION
SKY VILLA	5 Bedroom Duplex	<p>For those who live in orbit. Full-floor sanctuaries that capture the city’s horizon while maintaining inner stillness. This limited collection defines contemporary living, distilled to its purest form.</p>
RESIDENCE	TYPE	DESCRIPTION
RADIANCE SERIES	4 Bedroom	<p>A statement in refinement. Expansive proportions, elevated materials and effortless transitions define these residences. Here, precision meets purpose in spaces that invite both focus and retreat.</p>
RESIDENCE	TYPE	DESCRIPTION
LUMEN SERIES	1-3 Bedroom	<p>Centred on balance and light. Open, luminous layouts that blend activity with ease - the intersection of home, connection and calm. Crafted for city life, where energy and stillness coexist in perfect symmetry.</p>

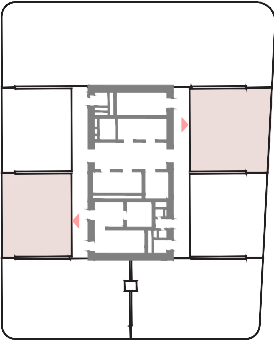
NEW WAYS OF LIVING
CONNECTED

Lumen Series 1 Bedroom - A

Min Suite Area: 53.90 Sqm (580 Sqft) | Min Balcony Area: 11.59 Sqm (125 Sqft) | Min Total Area: 65.49 Sqm (705 Sqft)
Max Suite Area: 54.14 Sqm (583 Sqft) | Max Balcony Area: 23.31 Sqm (251 Sqft) | Max Total Area: 77.45 Sqm (834 Sqft)



15TH TO 18TH FLOOR



19TH TO 22ND FLOOR

1-Measurements are indicative 'finish to finish' in Metric & Imperial excluding construction tolerance. 2-Plot/unit dimensions may vary from brochure, and unit types/plans may exist as mirrored versions; 3-All images used are for illustrative purposes only. 4-Unless stated otherwise, all fittings and interior decorative items shown are for illustrative purposes only and are not included. 5-The developer reserves the right to make alterations, at its absolute discretion, without any liability whatsoever up to the final 'as built' status.

Lumen Series 1 Bedroom - B

Min Suite Area: 54.80 Sqm (590 Sqft)

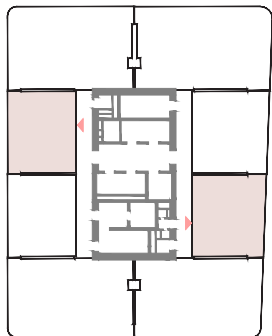
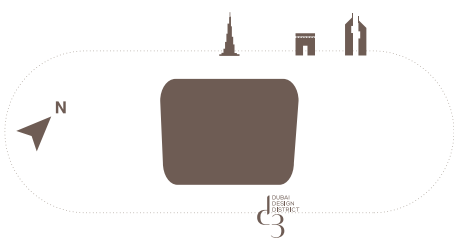
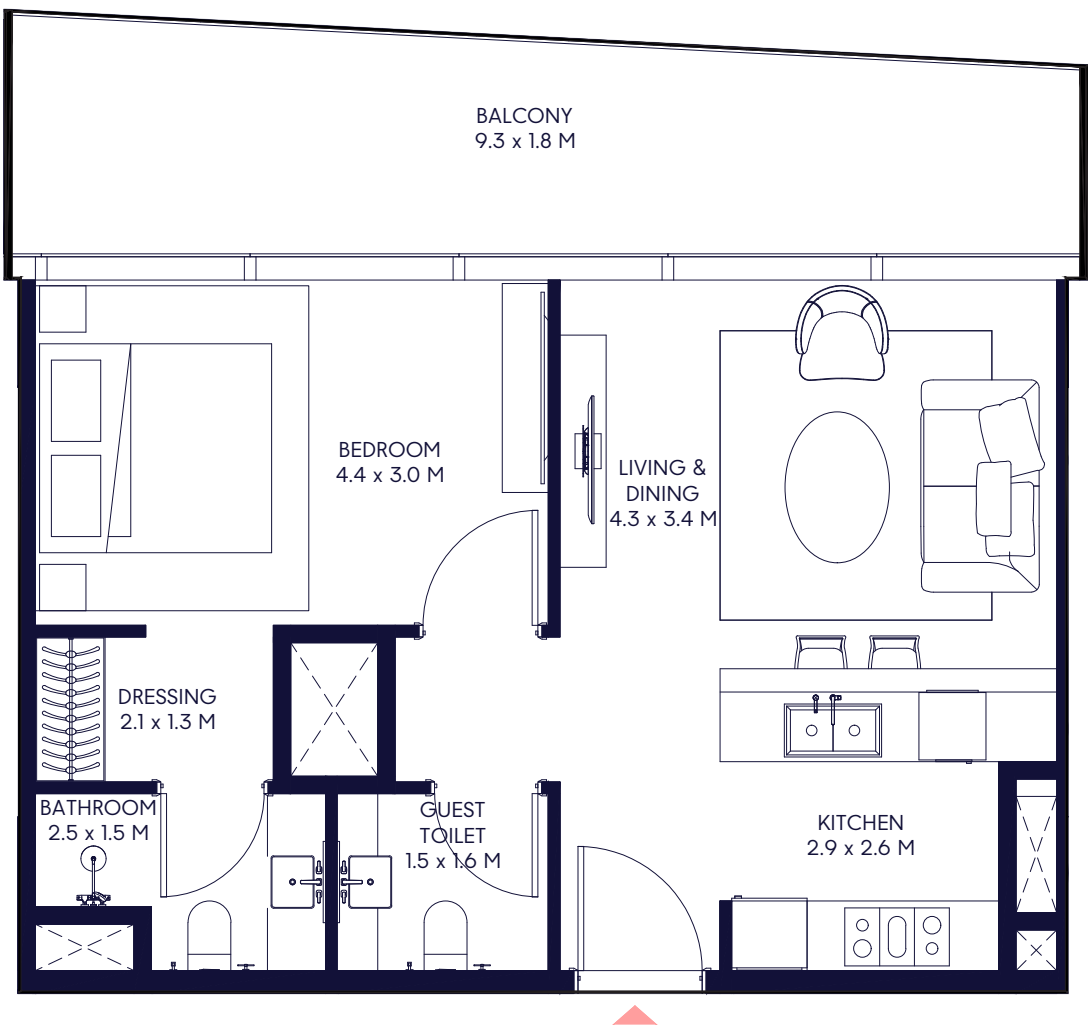
Min Balcony Area: 11.60 Sqm (125 Sqft)

Min Total Area: 66.40 Sqm (715 Sqft)

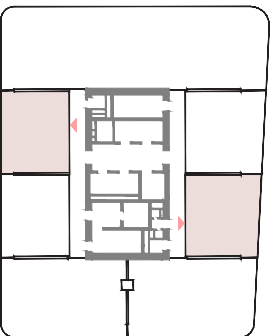
Max Suite Area: 54.55 Sqm (587 Sqft)

Max Balcony Area: 18.14 Sqm (195 Sqft)

Max Total Area: 72.69 Sqm (782 Sqft)



15TH TO 18TH FLOOR

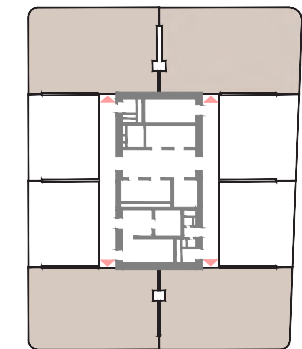
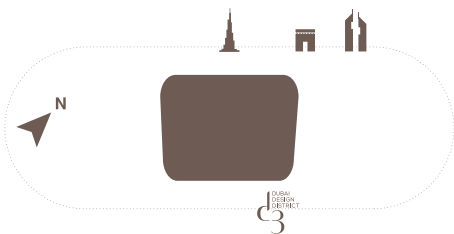
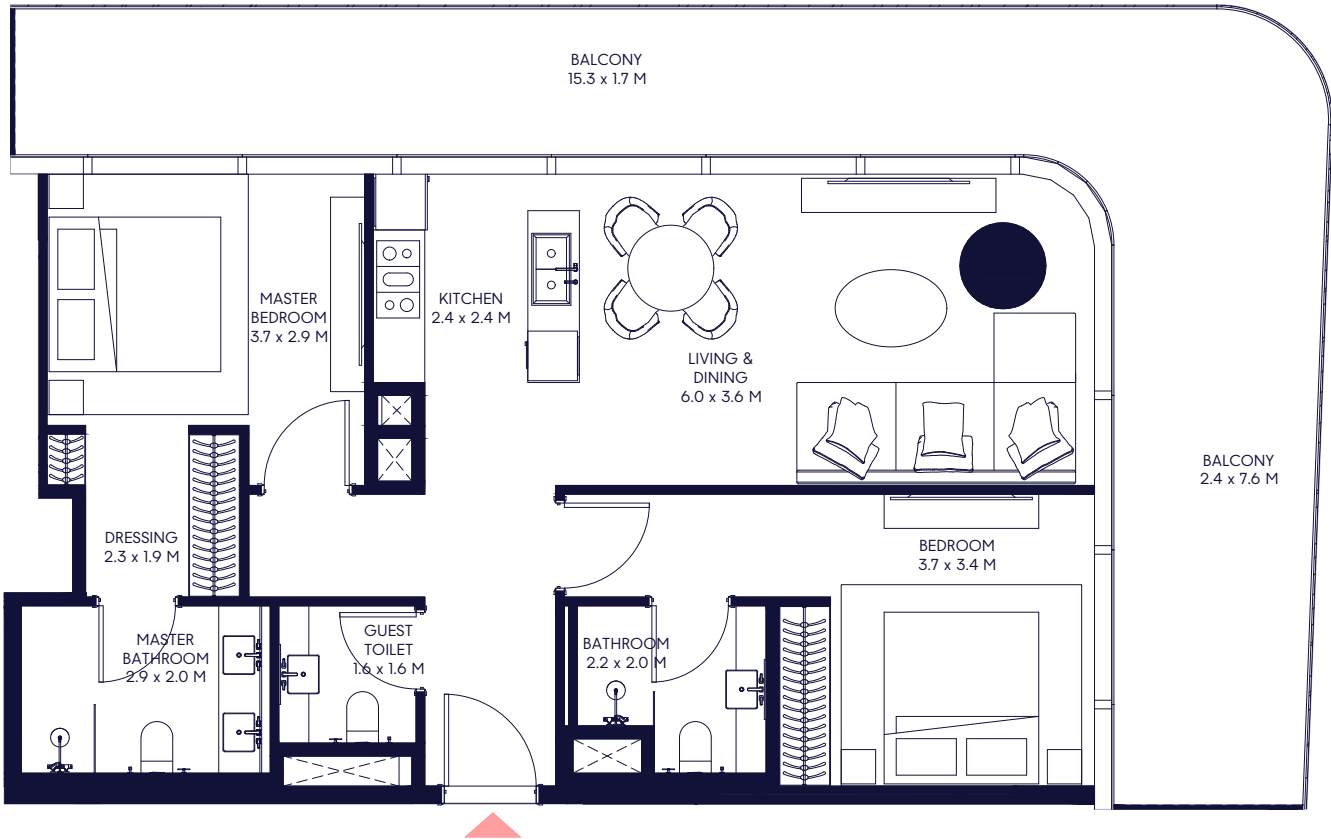


19TH TO 22ND FLOOR

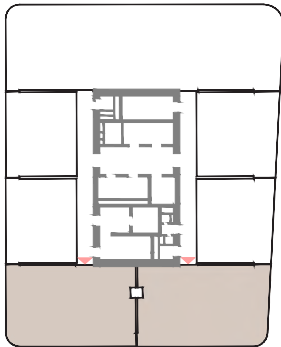
1-Measurements are indicative 'finish to finish' in Metric & Imperial excluding construction tolerance. 2-Plot/unit dimensions may vary from brochure, and unit types/plans may exist as mirrored versions; 3-All images used are for illustrative purposes only. 4-Unless stated otherwise, all fittings and interior decorative items shown are for illustrative purposes only and are not included. 5-The developer reserves the right to make alterations, at its absolute discretion, without any liability whatsoever up to the final 'as built' status.

Lumen Series 2 Bedroom - A

Min Suite Area: 91.71 Sqm (987 Sqft) | Min Balcony Area: 26.44 Sqm (285 Sqft) | Min Total Area: 118.15 Sqm (1,272 Sqft)
Max Suite Area: 92.74 Sqm (998 Sqft) | Max Balcony Area: 47.32 Sqm (510 Sqft) | Max Total Area: 140.06 Sqm (1,508 Sqft)



15TH TO 18TH FLOOR

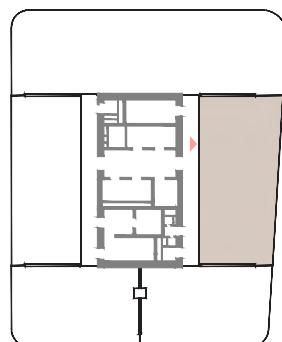
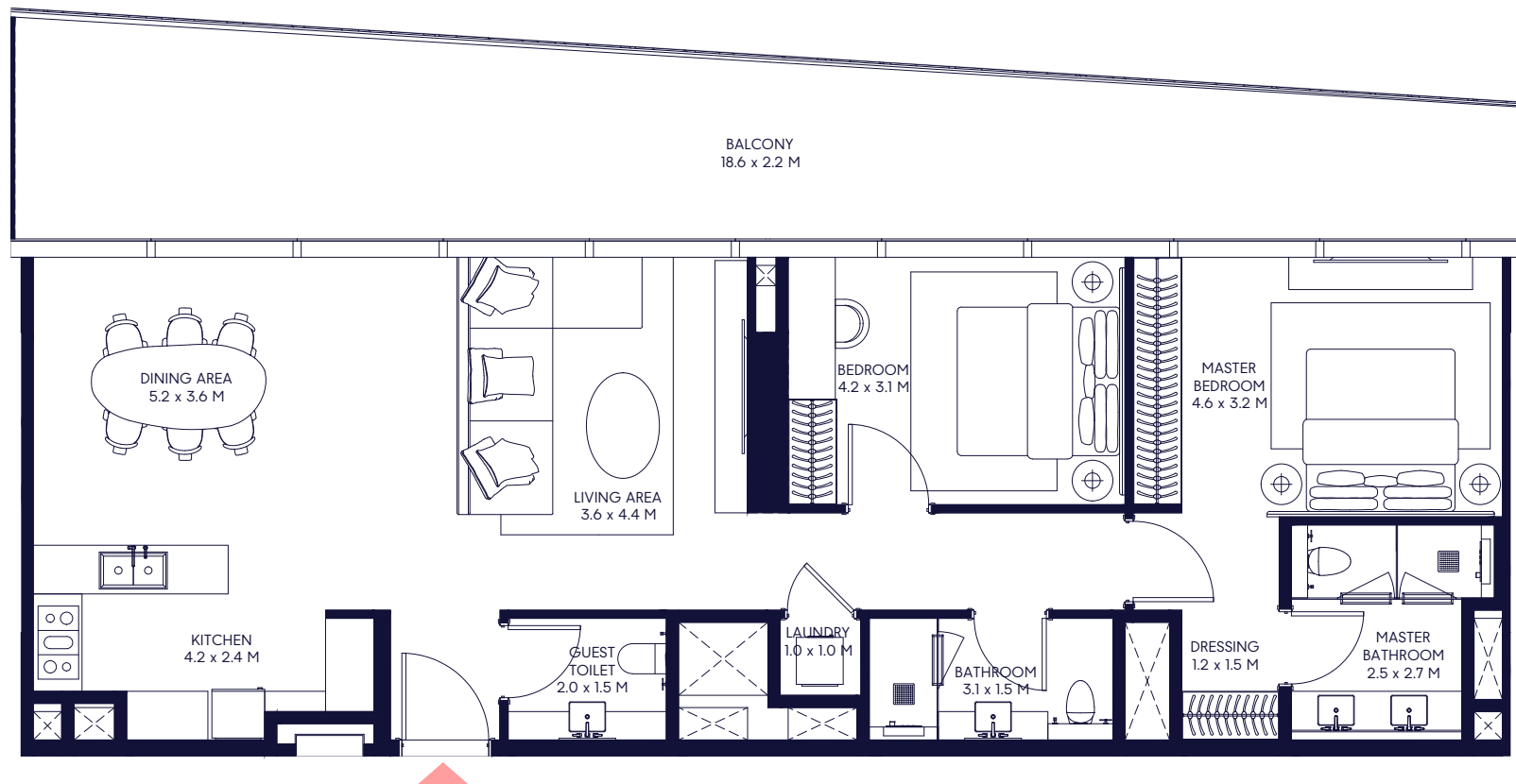


19TH TO 31ST FLOOR

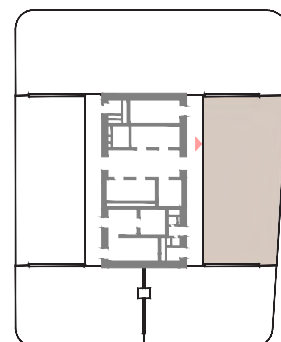
1-Measurements are indicative 'finish to finish' in Metric & Imperial excluding construction tolerance. 2-Plot/unit dimensions may vary from brochure, and unit types/plans may exist as mirrored versions; 3-All images used are for illustrative purposes only. 4-Unless stated otherwise, all fittings and interior decorative items shown are for illustrative purposes only and are not included. 5-The developer reserves the right to make alterations, at its absolute discretion, without any liability whatsoever up to the final 'as built' status.

Lumen Series 2 Bedroom - B

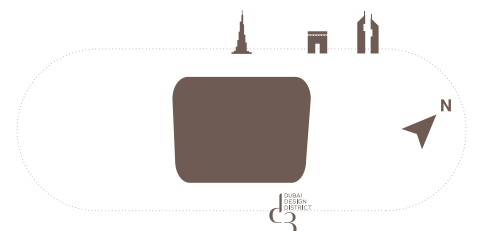
Min Suite Area: 109.10 Sqm (1,174 Sqft) | Min Balcony Area: 42.07 Sqm (453 Sqft) | Min Total Area: 151.17 Sqm (1,627 Sqft)
 Max Suite Area: 109.10 Sqm (1,174 Sqft) | Max Balcony Area: 47.46 Sqm (511 Sqft) | Max Total Area: 156.56 Sqm (1,685 Sqft)



23RD FLOOR



24TH TO 31ST FLOOR



Lumen Series 2 Bedroom - C

Min Suite Area: 109.31 Sqm (1,177 Sqft)

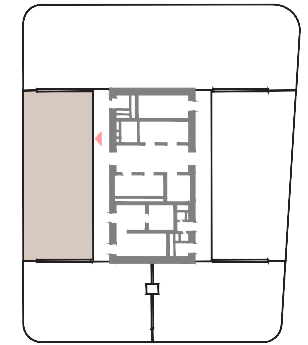
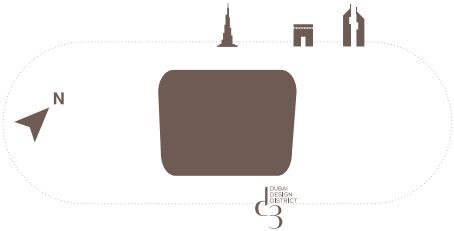
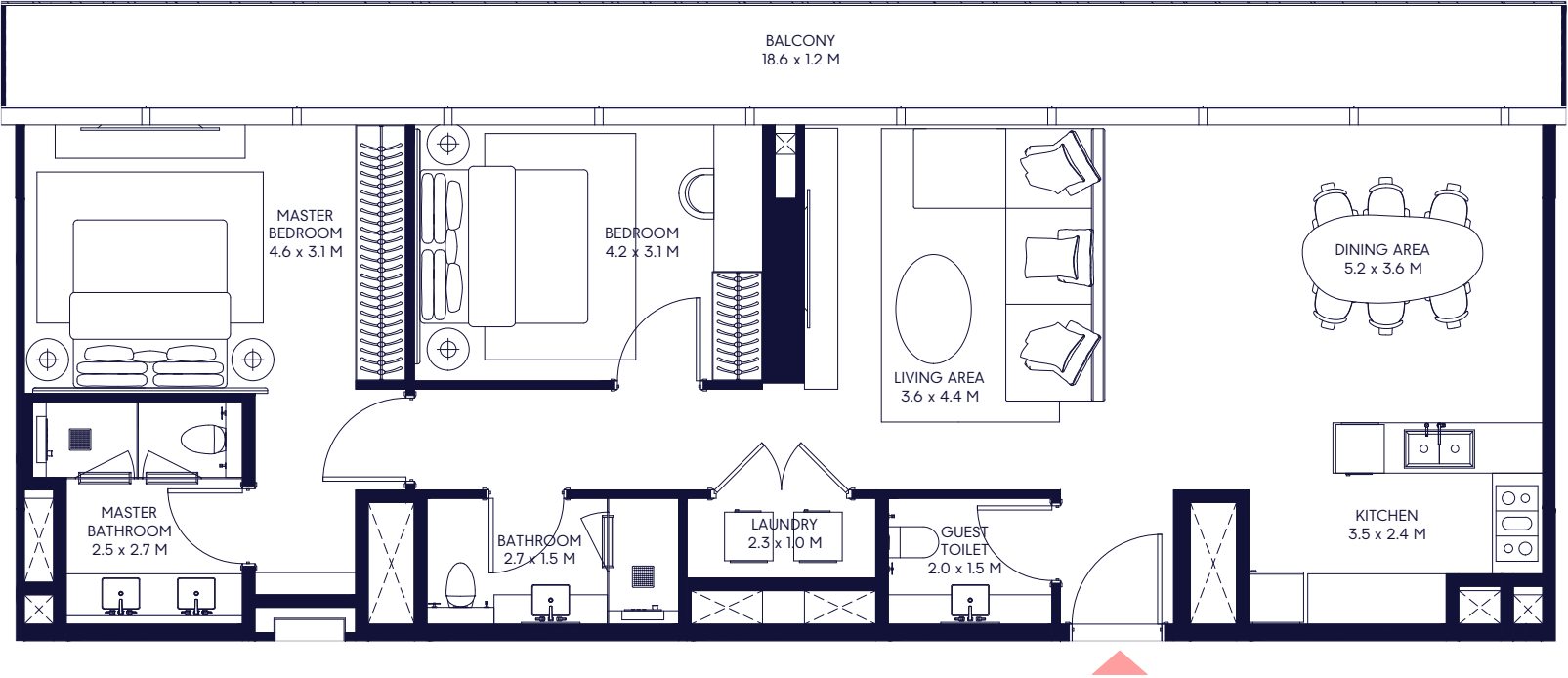
Max Suite Area: 109.31 Sqm (1,177 Sqft)

Min Balcony Area: 23.19 Sqm (249 Sqft)

Max Balcony Area: 24.17 Sqm (260 Sqft)

Min Total Area: 132.50 Sqm (1,426 Sqft)

Max Total Area: 133.48 Sqm (1,437 Sqft)

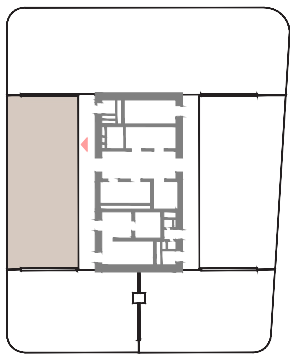
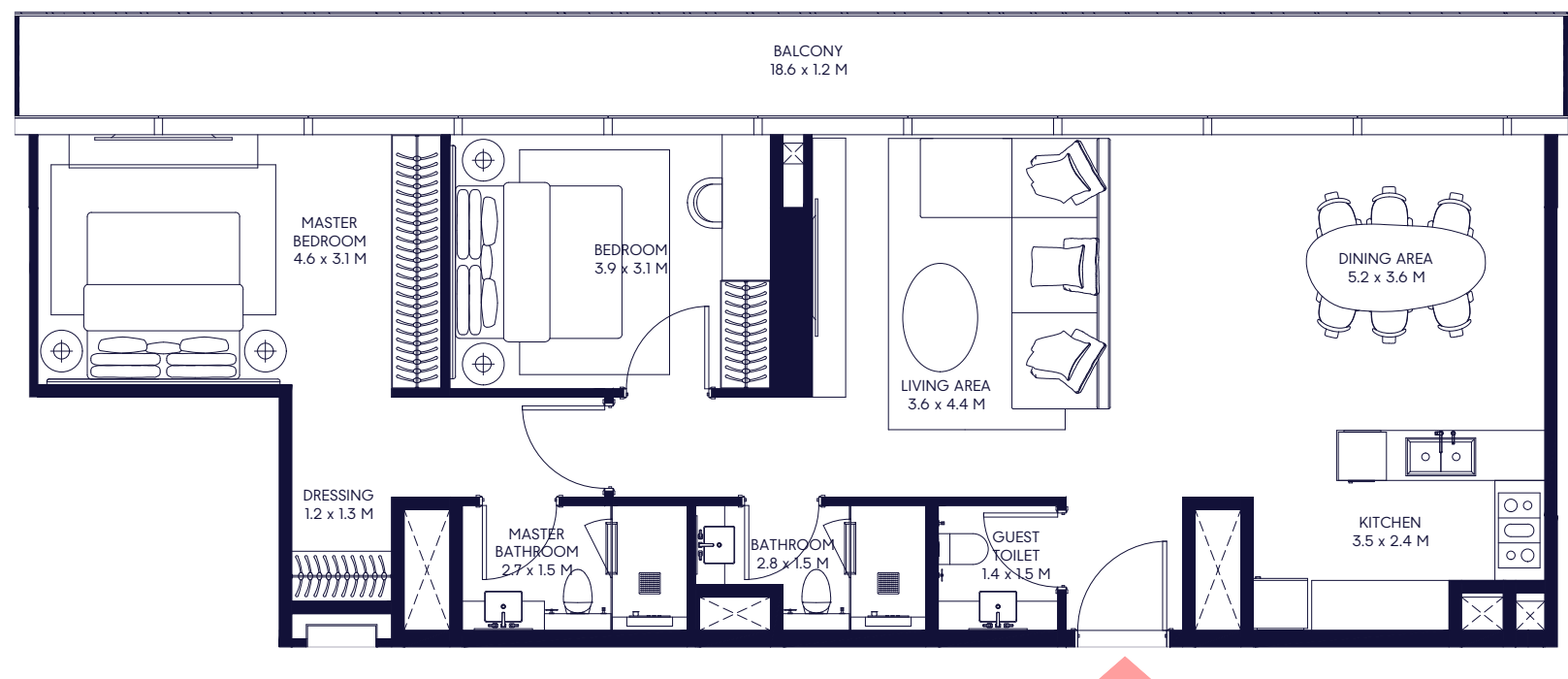


24TH TO 31ST FLOOR

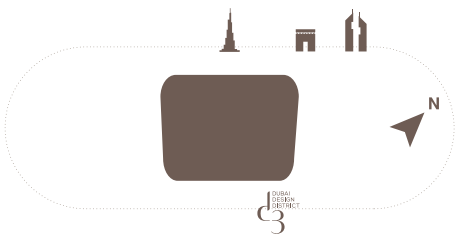
1-Measurements are indicative 'finish to finish' in Metric & Imperial excluding construction tolerance. 2-Plot/unit dimensions may vary from brochure, and unit types/plans may exist as mirrored versions; 3-All images used are for illustrative purposes only. 4-Unless stated otherwise, all fittings and interior decorative items shown are for illustrative purposes only and are not included. 5-The developer reserves the right to make alterations, at its absolute discretion, without any liability whatsoever up to the final 'as built' status.

Lumen Series 2 Bedroom - D

Min Suite Area: 101.69 Sqm (1,095 Sqft) | Min Balcony Area: 23.19 Sqm (249 Sqft) | Min Total Area: 124.88 Sqm (1,344 Sqft)



23RD FLOOR



1-Measurements are indicative 'finish to finish' in Metric & Imperial excluding construction tolerance. 2-Plot/unit dimensions may vary from brochure, and unit types/plans may exist as mirrored versions; 3-All images used are for illustrative purposes only. 4-Unless stated otherwise, all fittings and interior decorative items shown are for illustrative purposes only and are not included. 5-The developer reserves the right to make alterations, at its absolute discretion, without any liability whatsoever up to the final 'as built' status.

Lumen Series 3 Bedroom

Min Suite Area: 185.34 Sqm (1,995 Sqft)

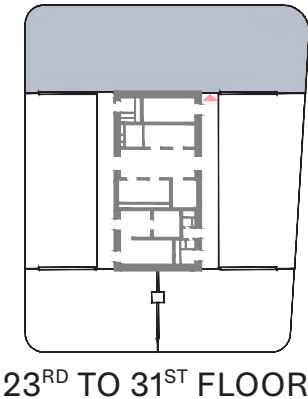
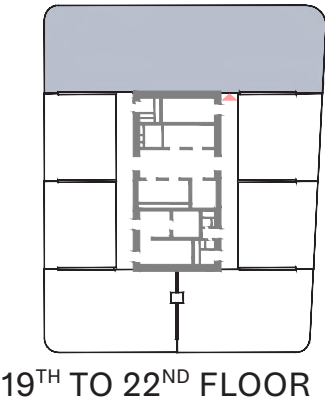
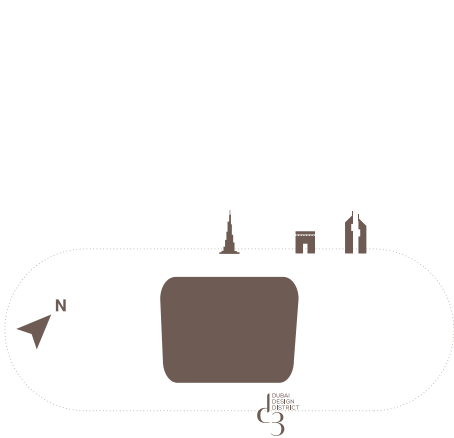
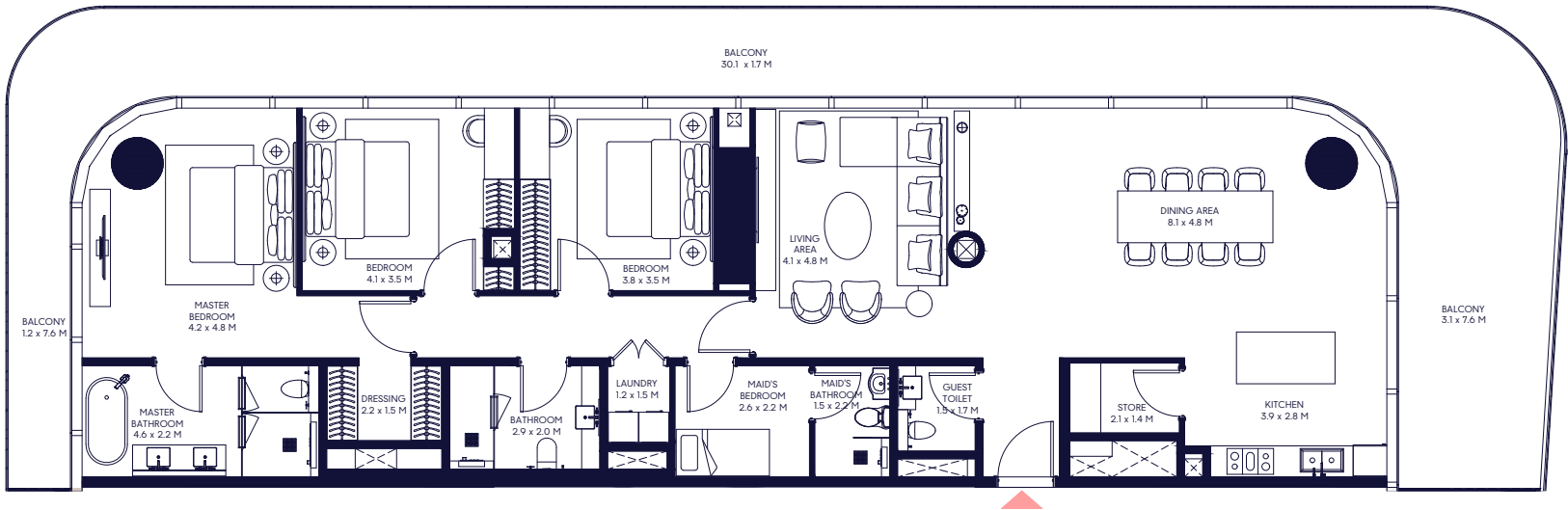
Max Suite Area: 184.02 Sqm (1,981 Sqft)

Min Balcony Area: 81.69 Sqm (879 Sqft)

Max Balcony Area: 88.86 Sqm (956 Sqft)

Min Total Area: 267.03 Sqm (2,874 Sqft)

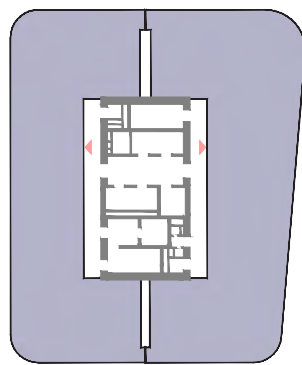
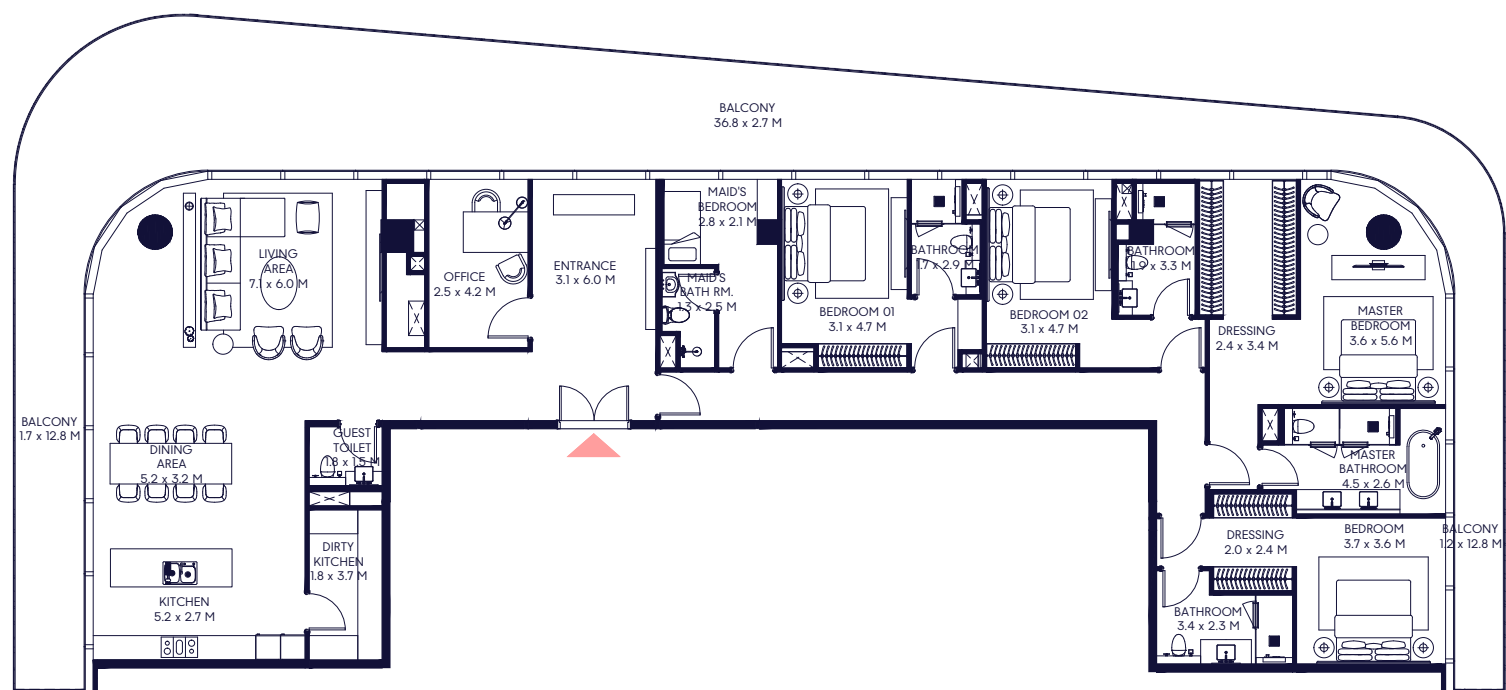
Max Total Area: 272.88 Sqm (2,937 Sqft)



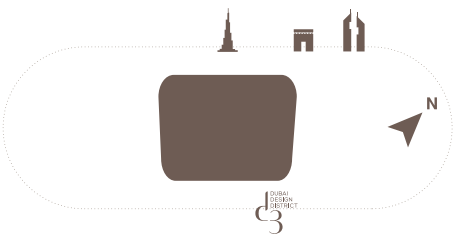
1-Measurements are indicative 'finish to finish' in Metric & Imperial excluding construction tolerance. 2-Plot/unit dimensions may vary from brochure, and unit types/plans may exist as mirrored versions; 3-All images used are for illustrative purposes only. 4-Unless stated otherwise, all fittings and interior decorative items shown are for illustrative purposes only and are not included. 5-The developer reserves the right to make alterations, at its absolute discretion, without any liability whatsoever up to the final 'as built' status.

Radiance Series 4 Bedroom

Min Suite Area: 289.89 Sqm (3,120 Sqft) | Min Balcony Area: 84.92 Sqm (914 Sqft) | Min Total Area: 374.81 Sqm (4,034 Sqft)
Max Suite Area: 289.62 Sqm (3,117 Sqft) | Max Balcony Area: 143.96 Sqm (1,550 Sqft) | Max Total Area: 433.58 Sqm (4,667 Sqft)



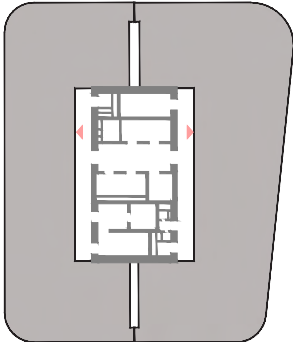
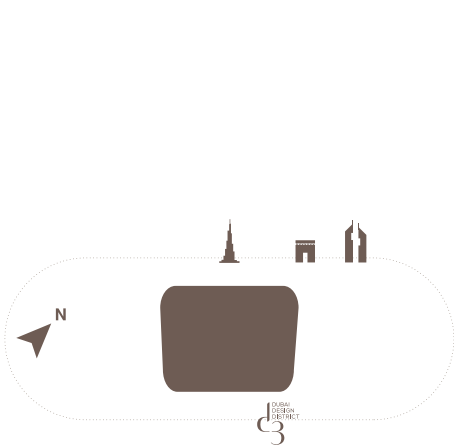
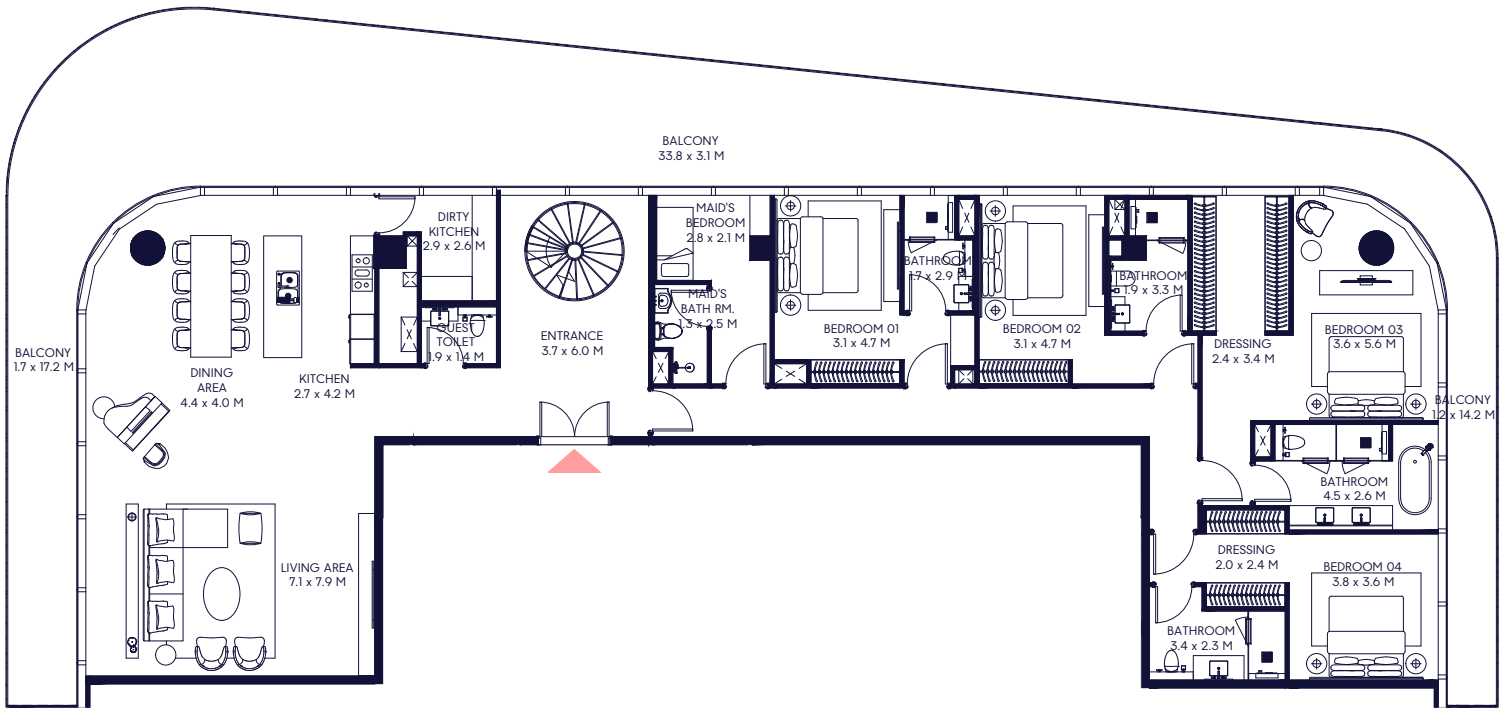
36TH TO 38TH FLOOR



1-Measurements are indicative 'finish to finish' in Metric & Imperial excluding construction tolerance. 2-Plot/unit dimensions may vary from brochure, and unit types/plans may exist as mirrored versions; 3-All images used are for illustrative purposes only. 4-Unless stated otherwise, all fittings and interior decorative items shown are for illustrative purposes only and are not included. 5-The developer reserves the right to make alterations, at its absolute discretion, without any liability whatsoever up to the final 'as built' status.

Sky Villa 5 Bedroom Duplex - 1 (Lower)

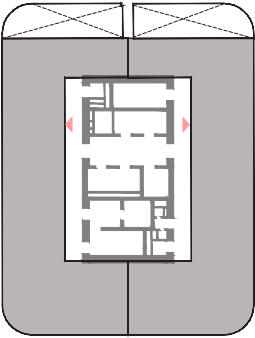
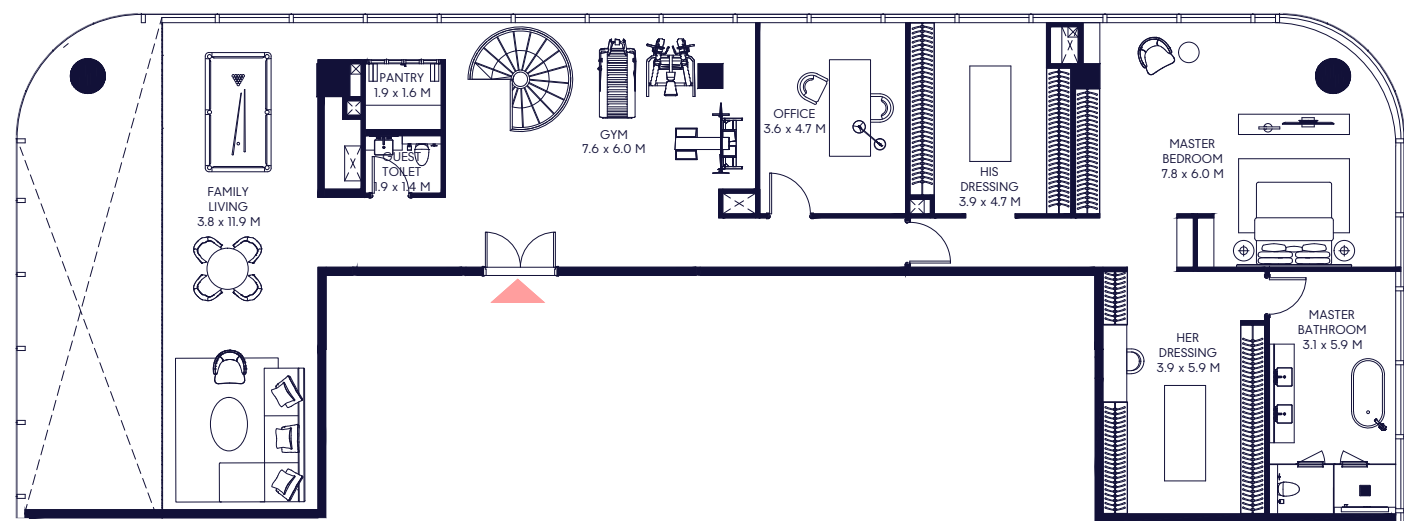
Lower Suite Area: 292.05 Sqm (3,144 Sqft) | Upper Suite Area: 253.16 Sqm (2,725 Sqft) | Balcony Area: 146.78 Sqm (1,580 Sqft)
Total Area: 692.00 Sqm (7,449 Sqft)



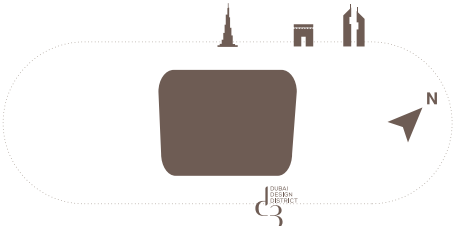
39TH FLOOR

1-Measurements are indicative 'finish to finish' in Metric & Imperial excluding construction tolerance. 2-Plot/unit dimensions may vary from brochure, and unit types/plans may exist as mirrored versions; 3-All images used are for illustrative purposes only. 4-Unless stated otherwise, all fittings and interior decorative items shown are for illustrative purposes only and are not included. 5-The developer reserves the right to make alterations, at its absolute discretion, without any liability whatsoever up to the final 'as built' status.

Sky Villa 5 Bedroom Duplex - 1 (Upper)



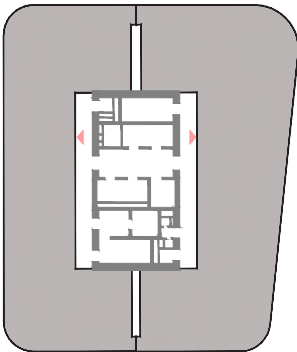
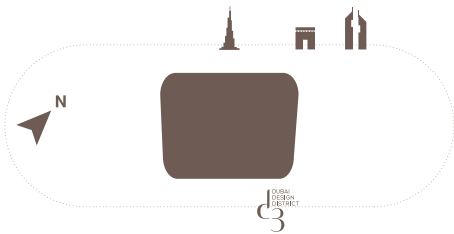
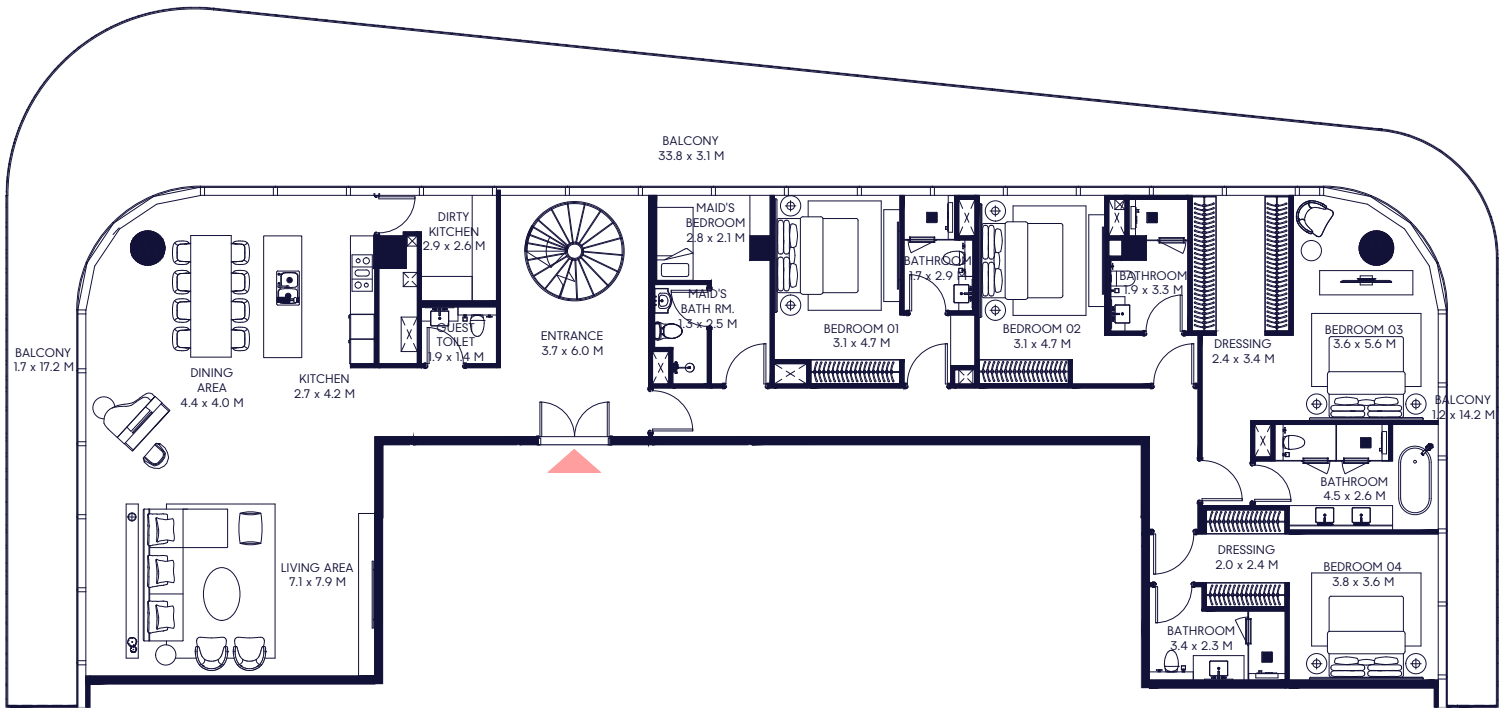
40TH FLOOR



1-Measurements are indicative 'finish to finish' in Metric & Imperial excluding construction tolerance. 2-Plot/unit dimensions may vary from brochure, and unit types/plans may exist as mirrored versions; 3-All images used are for illustrative purposes only. 4-Unless stated otherwise, all fittings and interior decorative items shown are for illustrative purposes only and are not included. 5-The developer reserves the right to make alterations, at its absolute discretion, without any liability whatsoever up to the final 'as built' status.

Sky Villa 5 Bedroom Duplex - 2 (Lower)

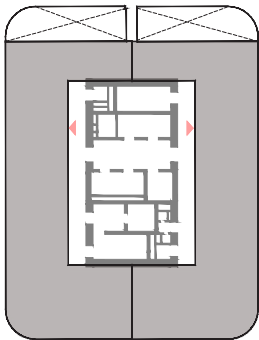
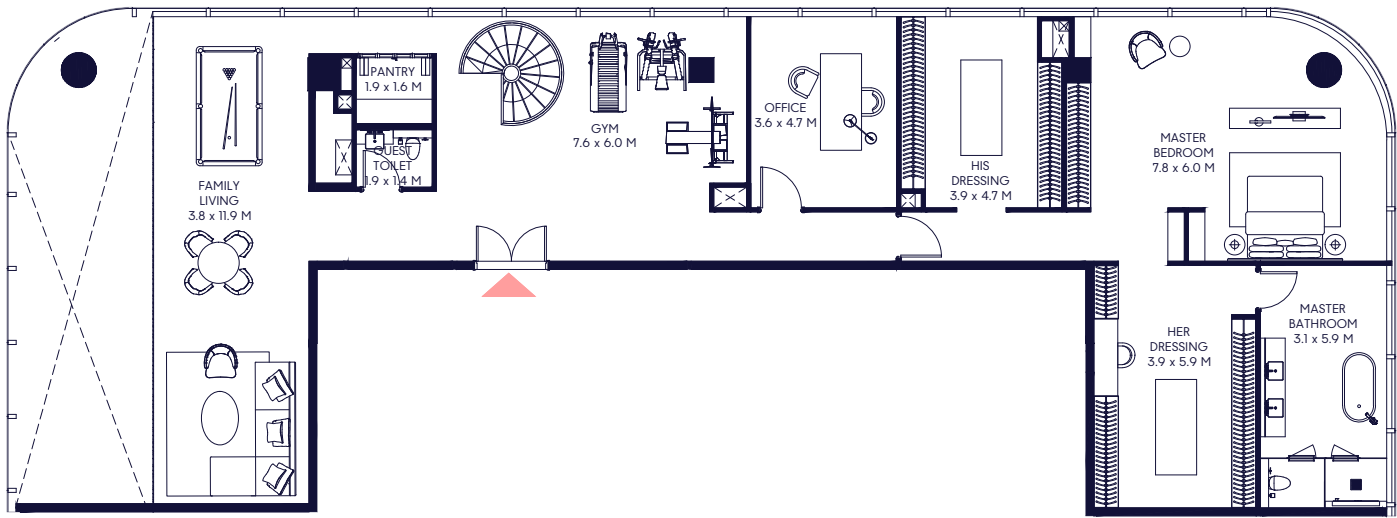
Lower Suite Area: 292.35 Sqm (3,147 Sqft) | Upper Suite Area: 252.88 Sqm (2,722 Sqft) | Balcony Area: 84.75 Sqm (912 Sqft)
Total Area: 629.97 Sqm (6,781 Sqft)



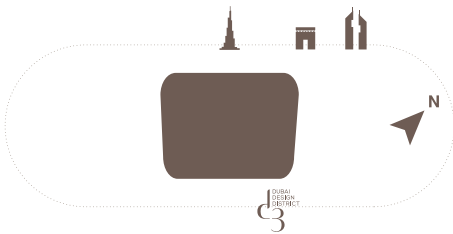
39TH FLOOR

1-Measurements are indicative 'finish to finish' in Metric & Imperial excluding construction tolerance. 2-Plot/unit dimensions may vary from brochure, and unit types/plans may exist as mirrored versions; 3-All images used are for illustrative purposes only. 4-Unless stated otherwise, all fittings and interior decorative items shown are for illustrative purposes only and are not included. 5-The developer reserves the right to make alterations, at its absolute discretion, without any liability whatsoever up to the final 'as built' status.

Sky Villa 5 Bedroom Duplex - 2 (Upper)



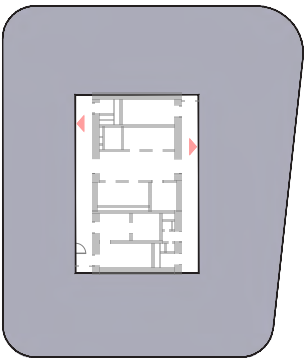
40TH FLOOR



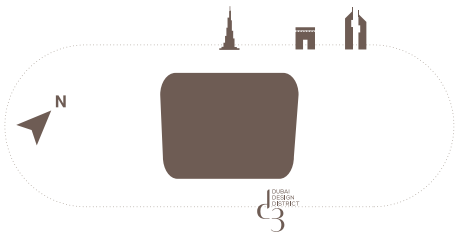
1-Measurements are indicative 'finish to finish' in Metric & Imperial excluding construction tolerance. 2-Plot/unit dimensions may vary from brochure, and unit types/plans may exist as mirrored versions; 3-All images used are for illustrative purposes only. 4-Unless stated otherwise, all fittings and interior decorative items shown are for illustrative purposes only and are not included. 5-The developer reserves the right to make alterations, at its absolute discretion, without any liability whatsoever up to the final 'as built' status.

The Sky Penthouse 6 Bedroom (Lower)

Suite Area: 598.77 Sqm (6,445 Sqft) | Balcony Area: 235.15 Sqm (2,531 Sqft)
Grand Total Area (All Floors): 1,650.90 Sqm (17,770 Sqft)



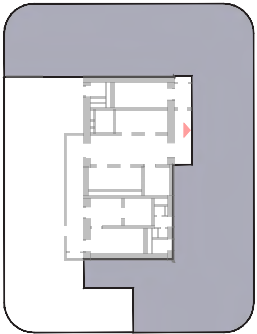
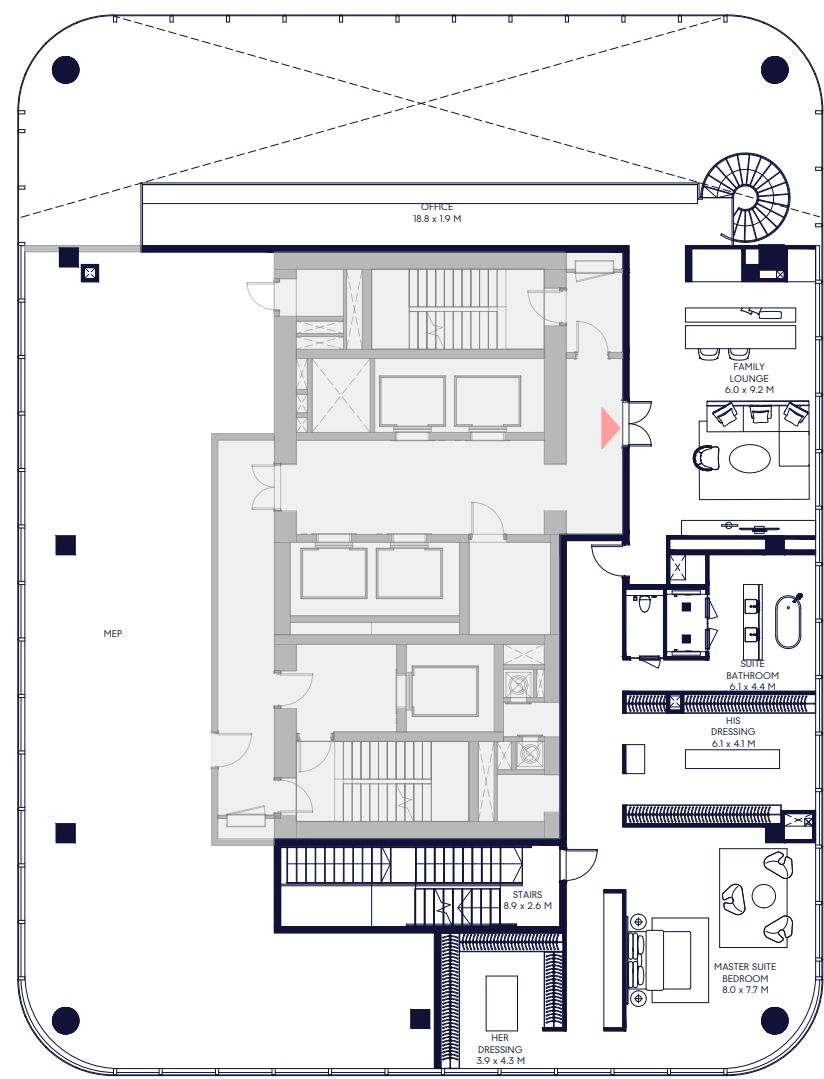
41ST FLOOR



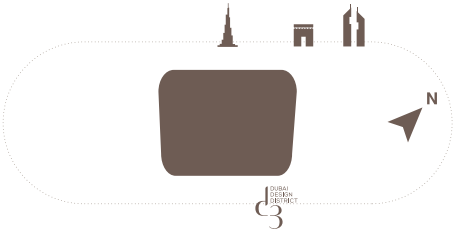
1-Measurements are indicative 'finish to finish' in Metric & Imperial excluding construction tolerance. 2-Plot/unit dimensions may vary from brochure, and unit types/plans may exist as mirrored versions; 3-All images used are for illustrative purposes only. 4-Unless stated otherwise, all fittings and interior decorative items shown are for illustrative purposes only and are not included. 5-The developer reserves the right to make alterations, at its absolute discretion, without any liability whatsoever up to the final 'as built' status.

The Sky Penthouse 6 Bedroom (Upper)

Suite Area: 289.73 Sqm (3,119 Sqft)



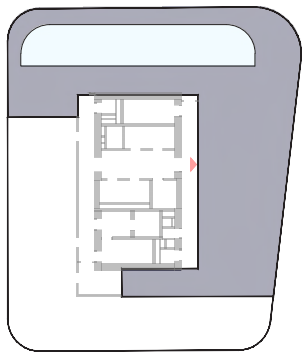
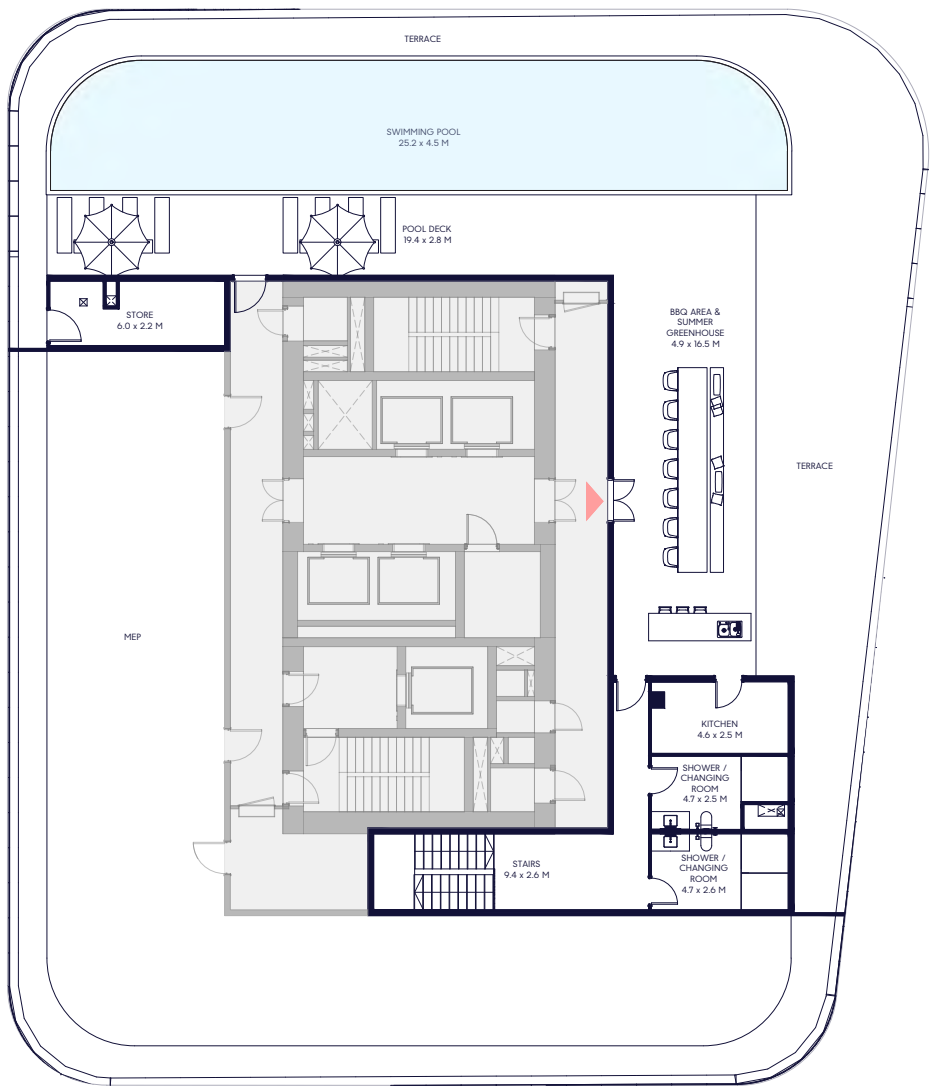
42ND FLOOR



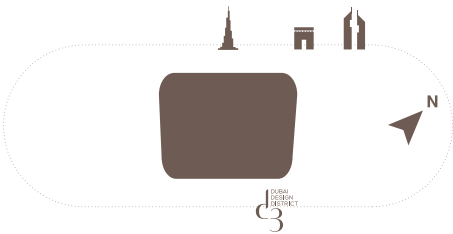
1-Measurements are indicative 'finish to finish' in Metric & Imperial excluding construction tolerance. 2-Plot/unit dimensions may vary from brochure, and unit types/plans may exist as mirrored versions; 3-All images used are for illustrative purposes only. 4-Unless stated otherwise, all fittings and interior decorative items shown are for illustrative purposes only and are not included. 5-The developer reserves the right to make alterations, at its absolute discretion, without any liability whatsoever up to the final 'as built' status.

The Sky Penthouse 6 Bedroom (Roof)

Suite Area: 86.80 Sqm (934 Sqft) | Terrace Area: 440.46 Sqm (4,741 Sqft)



ROOF FLOOR



1-Measurements are indicative 'finish to finish' in Metric & Imperial excluding construction tolerance. 2-Plot/unit dimensions may vary from brochure, and unit types/plans may exist as mirrored versions; 3-All images used are for illustrative purposes only. 4-Unless stated otherwise, all fittings and interior decorative items shown are for illustrative purposes only and are not included. 5-The developer reserves the right to make alterations, at its absolute discretion, without any liability whatsoever up to the final 'as built' status.