

yibe

MAKE IT YOURS!

Nice to meet you!

ARSENAL EAST

To expand living spaces and think beyond square meters. This approach and our extensive professional experience helps us to create innovative, outstanding projects with high demand in the market. This project is our Dubai reimagination, with vibrancy and creativity in its DNA.





28 YEARS

on the market

> 100

professional awards

> 43,000 residents

live in our homes

> 1,000,000 m²

built



TO CO-CREATE
THE OUTSTANDING

DA BUREAU

One of the world most renowned
creative architects and interior
design collaboration.

INT design awards
DNA Paris design award
London Design Award
HD Awards
AMP masterprize
FX Design Awards



//

It's not about
"fitting in", it's all
about standing out,
mixing with and
going with the city's
energy flow

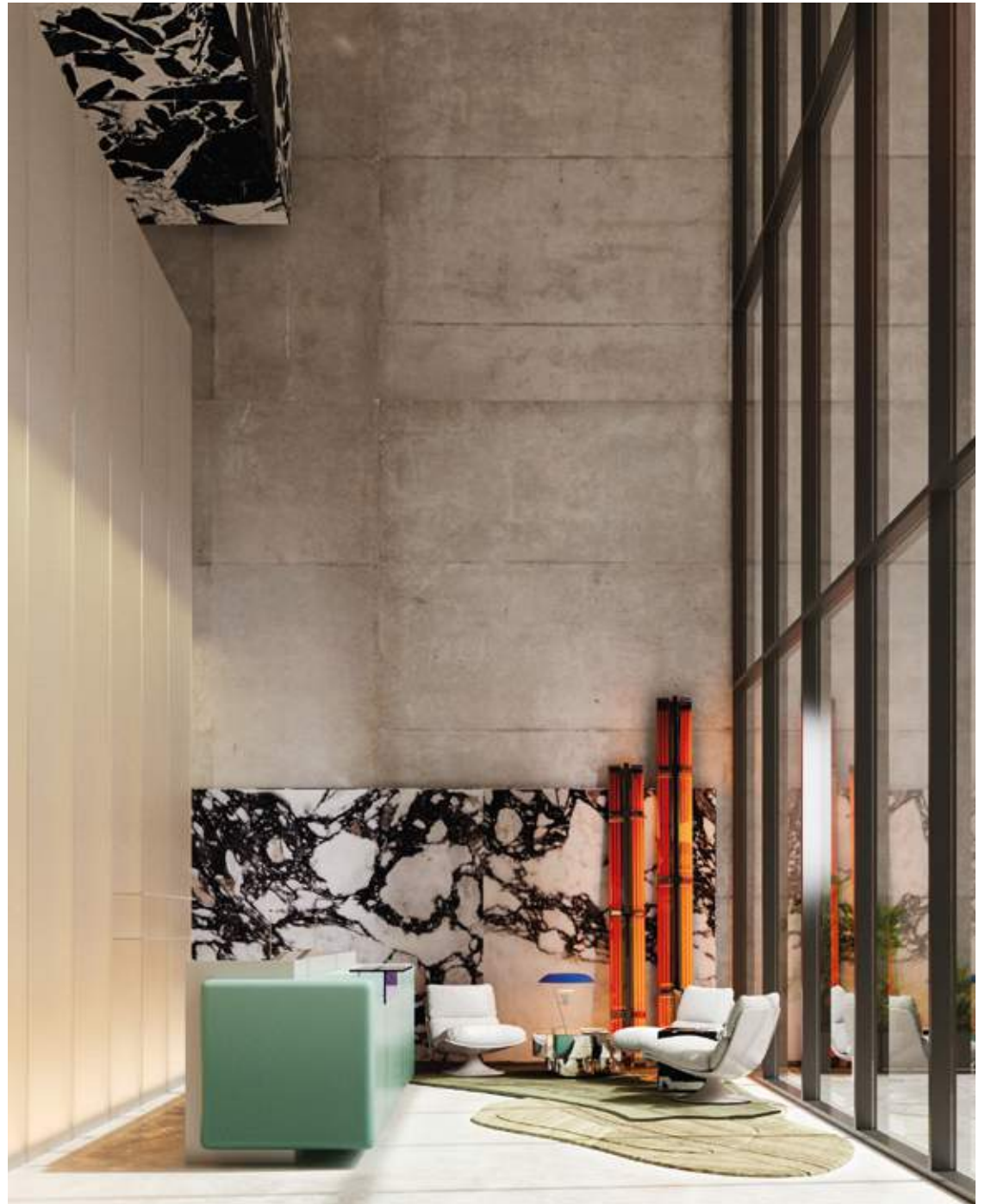
//

Boris Lvovsky,
Head Architect, Co-founder DA BUREAU





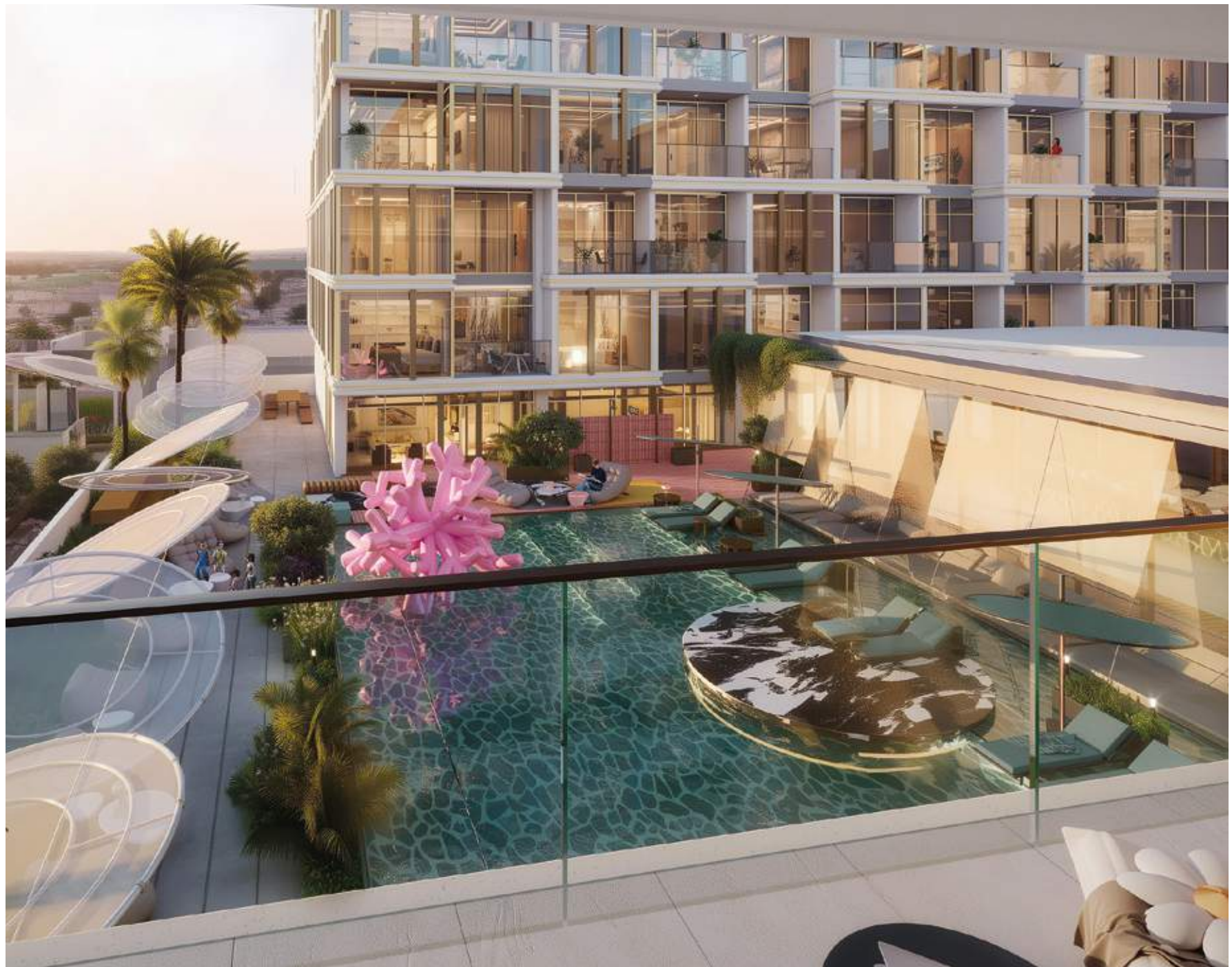
yibe













TO BE IN THE THICK OF THINGS

Situated in the Al Satwa district, a multi-cultural, artistic and business hub filled with museums, fashion, business districts and public spaces. The diverse mix of lifestyles and closeness to the Downtown creates the unique locale.





IN THE CITY STREAM

1. AL SATWA
2. EMIRATES TOWERS / MUSEUM OF THE FUTURE
3. ZABEEL PARK / DUBAI FRAME
4. COCA COLA ARENA
5. BURJ KHALIFA
6. DUBAI MALL
7. DUBAI OPERA
8. LA MER BEACH
9. DIFC | LEADING FINANCIAL HUB IN THE MEASA REGION
10. BUSINESS BAY
11. DUBAI DESIGN DISTRICT
12. RAS AL KHOR SANCTUARY
13. BULGARI RESORT
14. DOWNTOWN
15. AL KARAMA

3 KM
3 KM
3 KM
3 KM
3 KM
3 KM
3 KM
5 KM
5 KM
10 KM
5 KM
5 KM
5 KM
5 KM



Dubai Airport
15-20 minutes



Downtown Dubai
15-20 minutes

D3

Dubai Design District
15 minutes



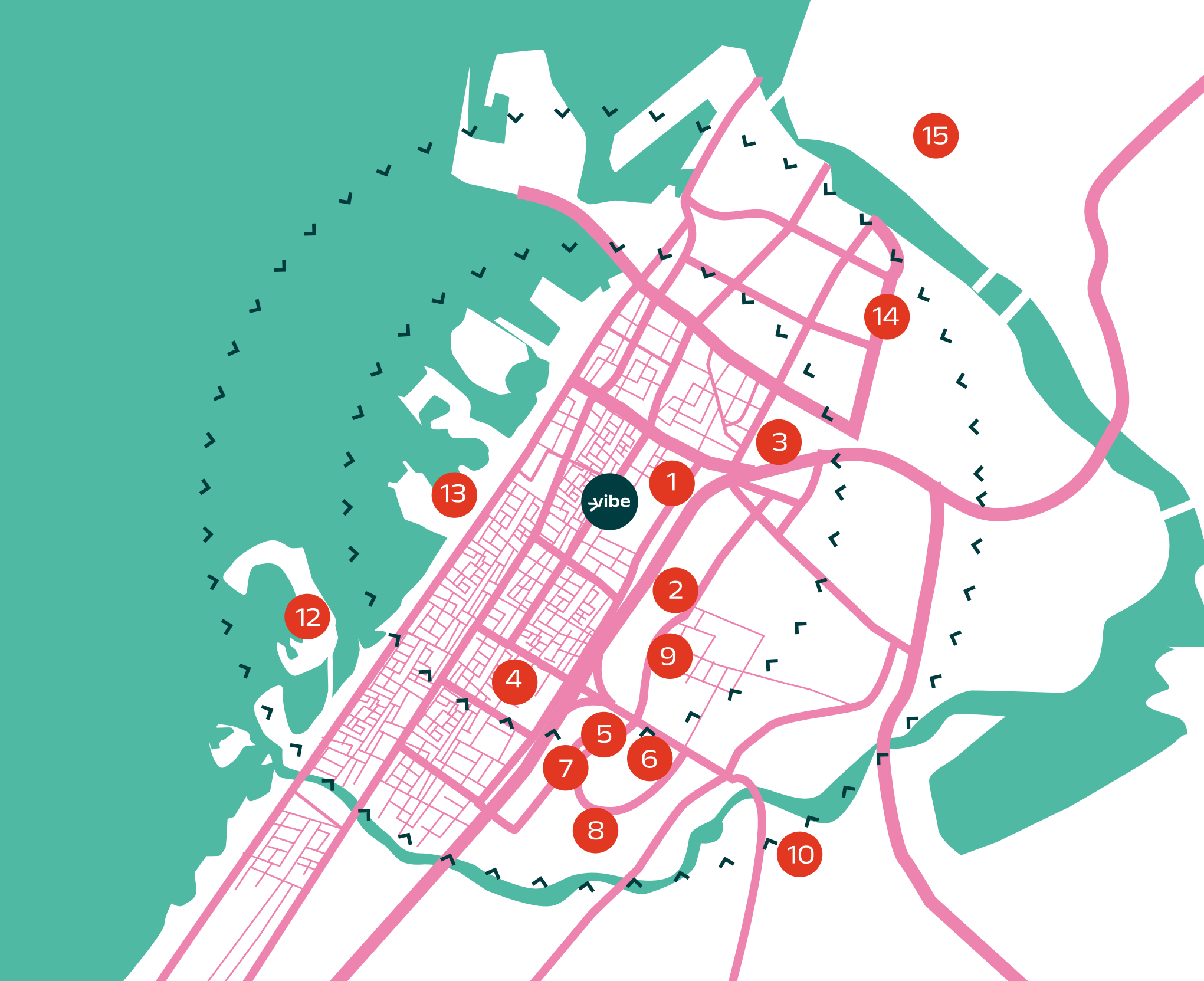
DIFC
15 minutes



Museum of the Future
10-15 minutes



Dubai Opera
15-20 minutes



TO LIVE INSIDE OUT

Creating value in public spaces and functional mix.
Shaping communities, neighborhood and social gathering.

AMENITIES:

- Lobby
- Living room
- Gym
- Coworking
- Terrace garden
- Terrace swimming pool
- Yoga studio
- Healthy food restaurant









LOBBY

We didn't strive to show off, but to be expressive, that's felt from the first step. The lobby becomes a point of balance—the place where the feeling of home begins.

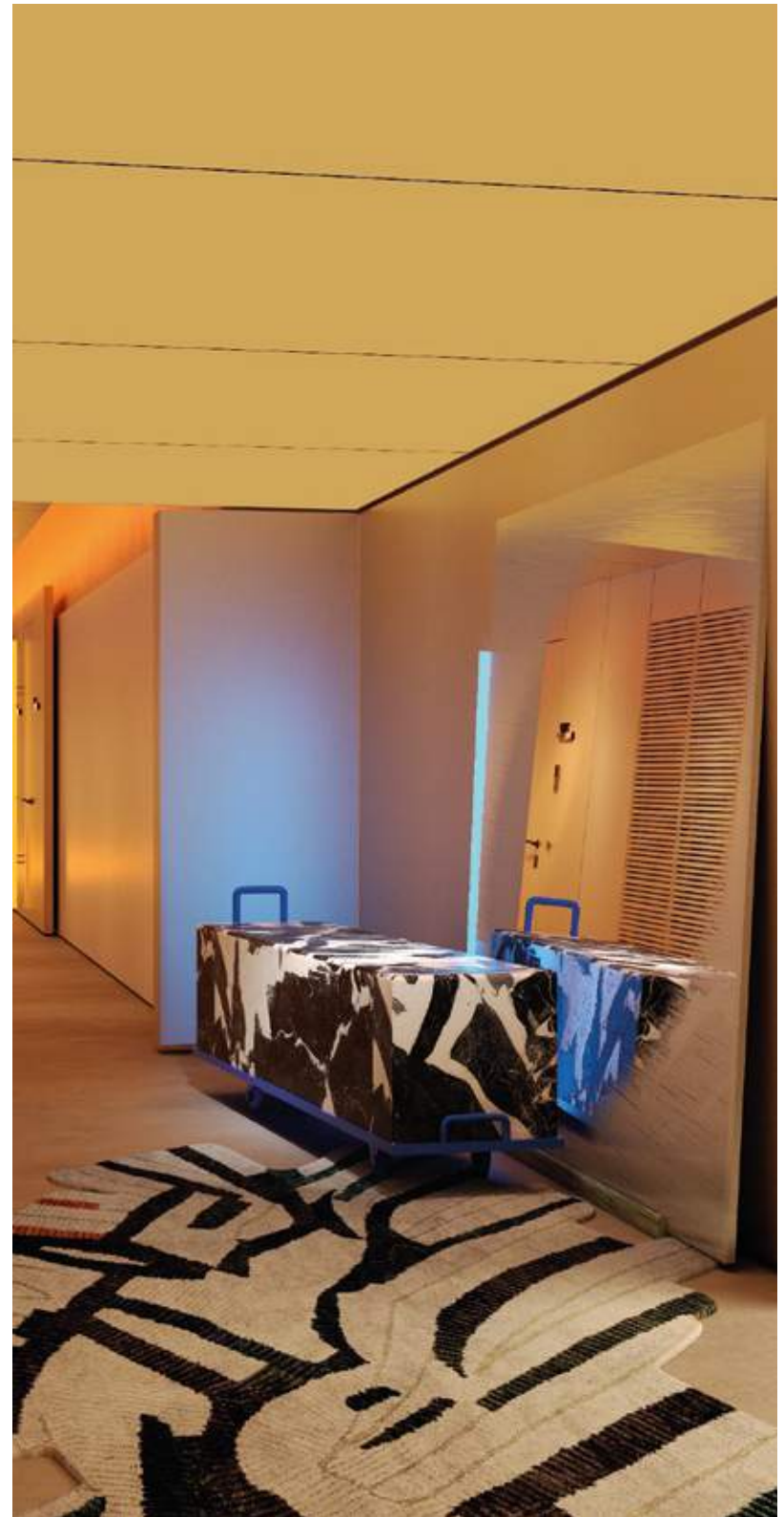




LIVING ROOM



AMENITIES



LIVING ROOM







**WORK-LIFE BALANCE
ENVIRONMENT**



GYM

172.4 m2 / 1855.6 ft2

VIBE is designed as a place where everything works for the comfort and rhythm of a person.



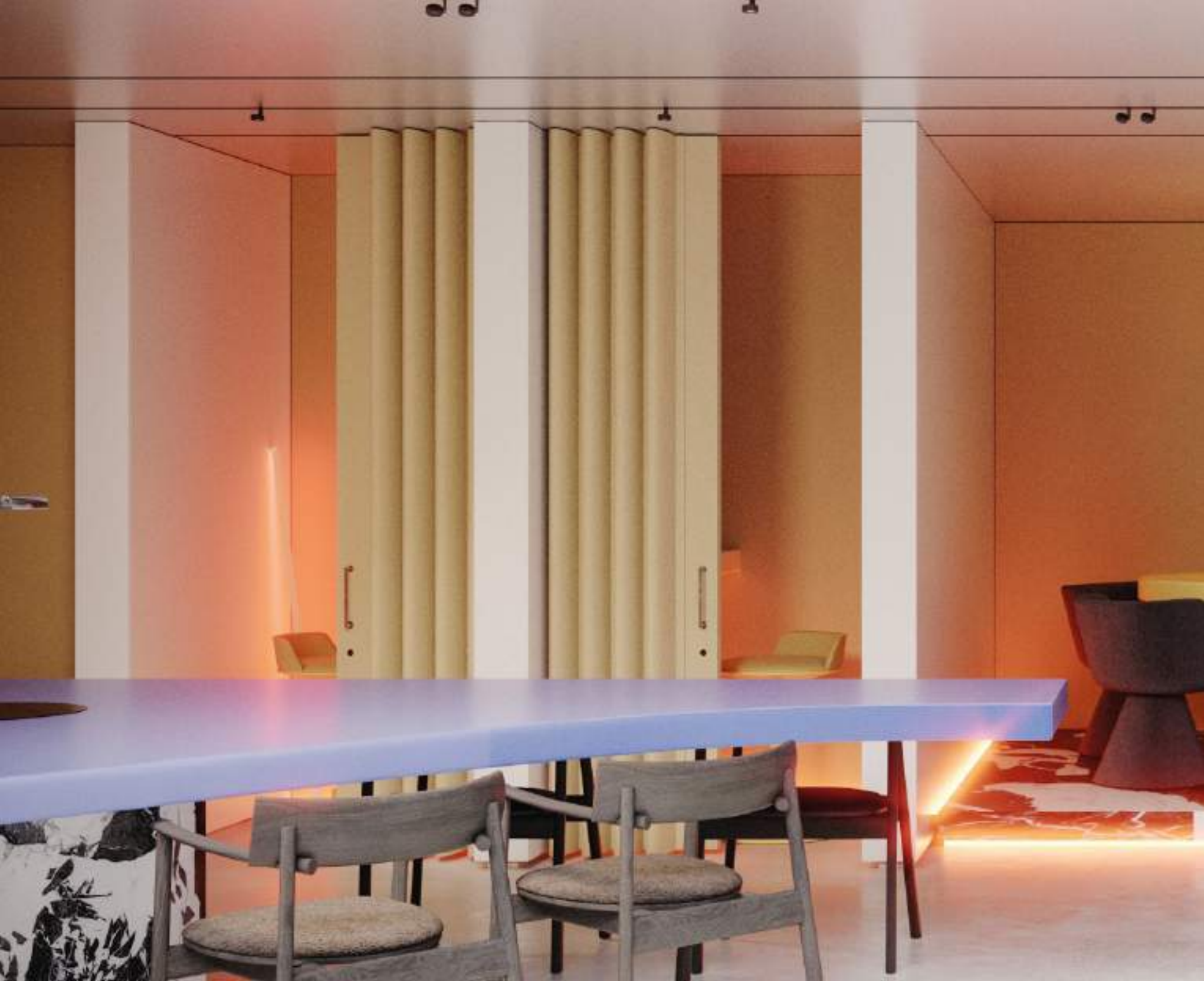
YOGA AND
MEDITATION
AREA



COWORKING











THE LUX SUMMER CONCEPT

Where architecture, facilities, garden, light
and shadow create the living landscape



TERRACE GARDEN

VIBE's look is cinematic. We were inspired by the films of Paolo Sorrentino. Every frame is beautiful and atmospheric, yet still vibrant. The architecture becomes the backdrop, with you in the starring role.





TERRACE SWIMMING POOL

295.6 m2 / 3181.8 ft2





INDOOR
SWIMMING
POOL





DESIGN
FULFILLMENT:
FOCUS,
INTENSITY
AND CHILL



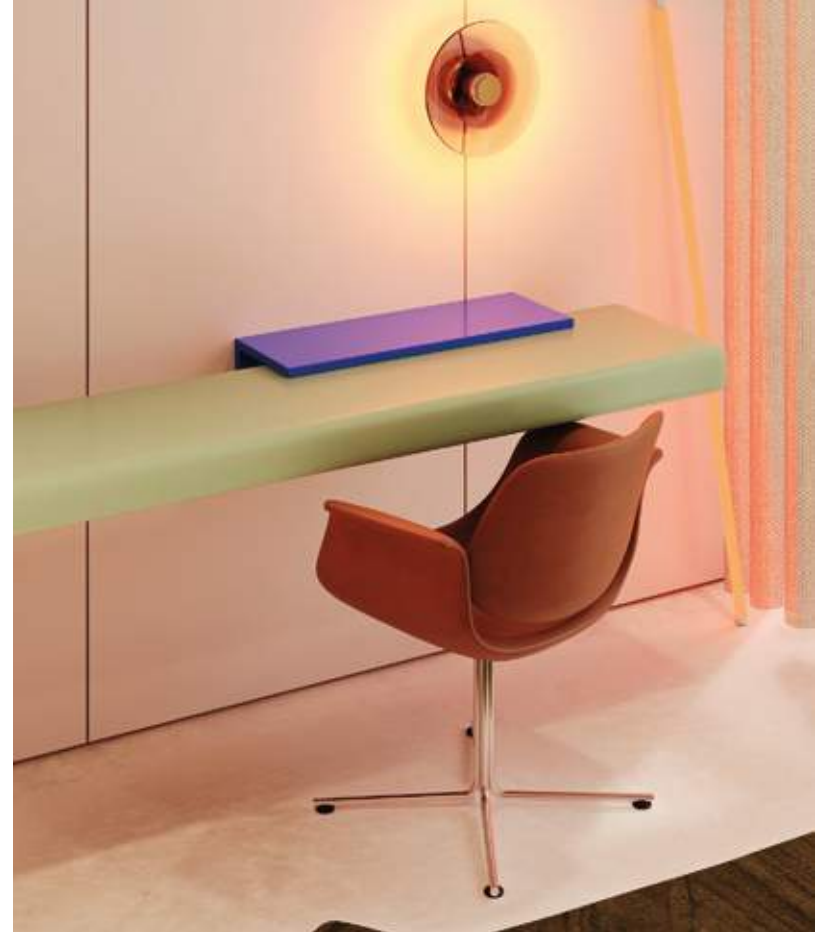




1 BEDROOM

153 units

This is how 'ironic luxury' is born:
not pretentious, but very expressive.







CHIC, REDEFINED

Where proportions, colors and textures take part

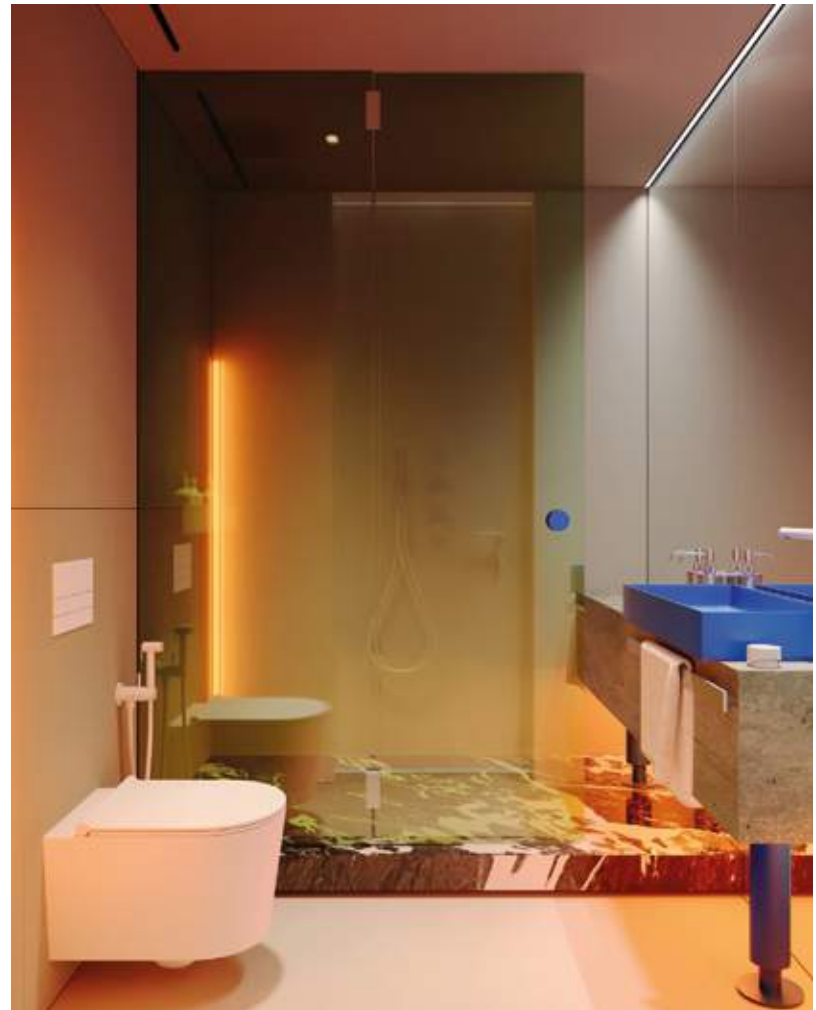






STUDIO

54 units













207 UNITS ONLY

NOT FOR EVERYONE, BUT FOR THE EXACT ONES

153 one-bedroom appt
54 studios
227 parking lots
1 floor commercial
8 residential floors



VIBE 360 SERVICE

Get extra services and just enjoy the Vibe:
from airport pick-ups and convenient travelling
to artistic and immersive experiences: seaside,
museums or just private cozy dinner at the terrace.

VIBE 360 SERVICE IS:

- airport pick-up
- car rent
- booking business venues and meeting rooms
- leisure services
- transfer from the apartment to the beach







PAYMENT PLAN

1 10% On booking	2 5%	3 5%	4 5%	5 5%	6 5%
7 5%	8 5%	9 5%	10 5%	11 5%	12 40% Handover

