



ALA

RESIDENCE

AL REEM ISLAND, ABU DHABI

Object 1



A1LA
RESIDENCE

AL REEM ISLAND, ABU DHABI

Building Description:

B+G+2P+17+R

Anticipated Completion: Q4 2028

A1LA RESIDENCE is a boutique sanctuary where modern luxury meets the quiet poetry of moonlit living, a boutique home for people who seek beauty that feels effortless, softness that feels powerful, and luxury that feels human. Inspired by the meaning of “Ayla” — a soft celestial glow — the residence is defined by light, serenity, and refined femininity.

Floor Plans

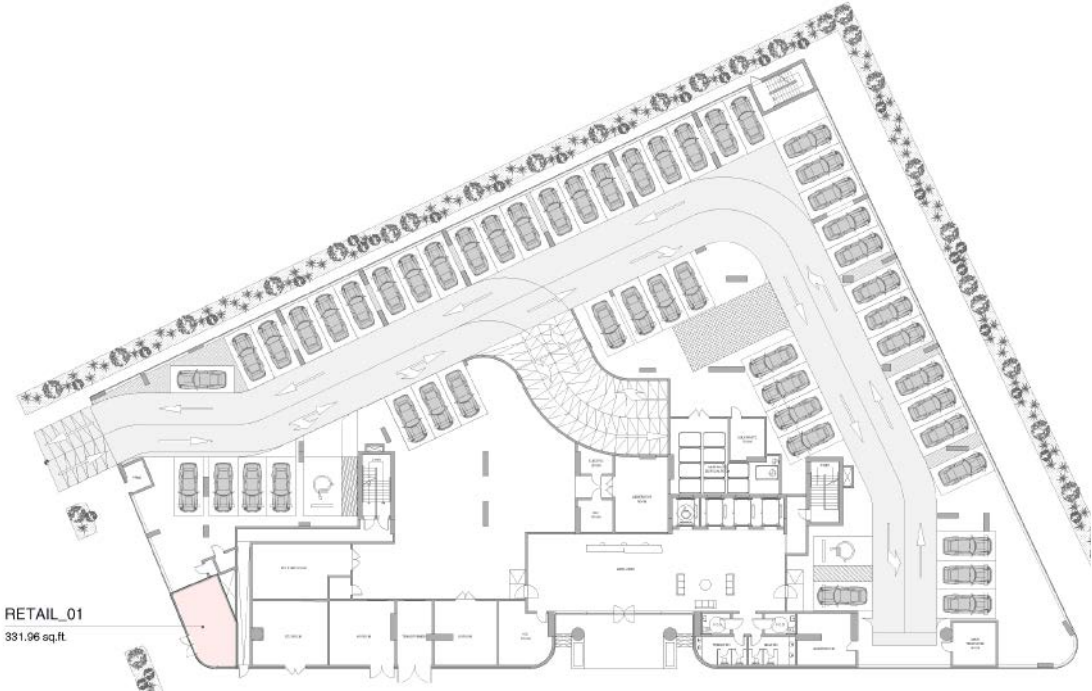


GROUND FLOOR
RETAIL



THE GATE DISTRICT

AL FAY PARK



SORBONNE UNIVERSITY ABU DHABI



AL REEM ISLAND CANAL

Disclaimer: all pictures, plans, layouts, information, data and details included in this brochure are indicative only may change at any time up to the final "as built" status in accordance with the final designs of the project, regulatory approvals and planning permissions

FLOOR 1

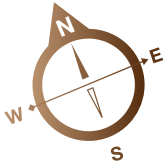


THE GATE DISTRICT

AL FAY PARK



SORBONNE UNIVERSITY ABU DHABI



AL REEM ISLAND CANAL

Disclaimer: all pictures, plans, layouts, information, data and details included in this brochure are indicative only may change at any time up to the final "as built" status in accordance with the final designs of the project, regulatory approvals and planning permissions

FLOOR 2



THE GATE DISTRICT



Disclaimer: all pictures, plans, layouts, information, data and details included in this brochure are indicative only may change at any time up to the final "as built" status in accordance with the final designs of the project, regulatory approvals and planning permissions

TYPICAL 01 FLOOR

FLOOR: 3, 4



THE GATE DISTRICT

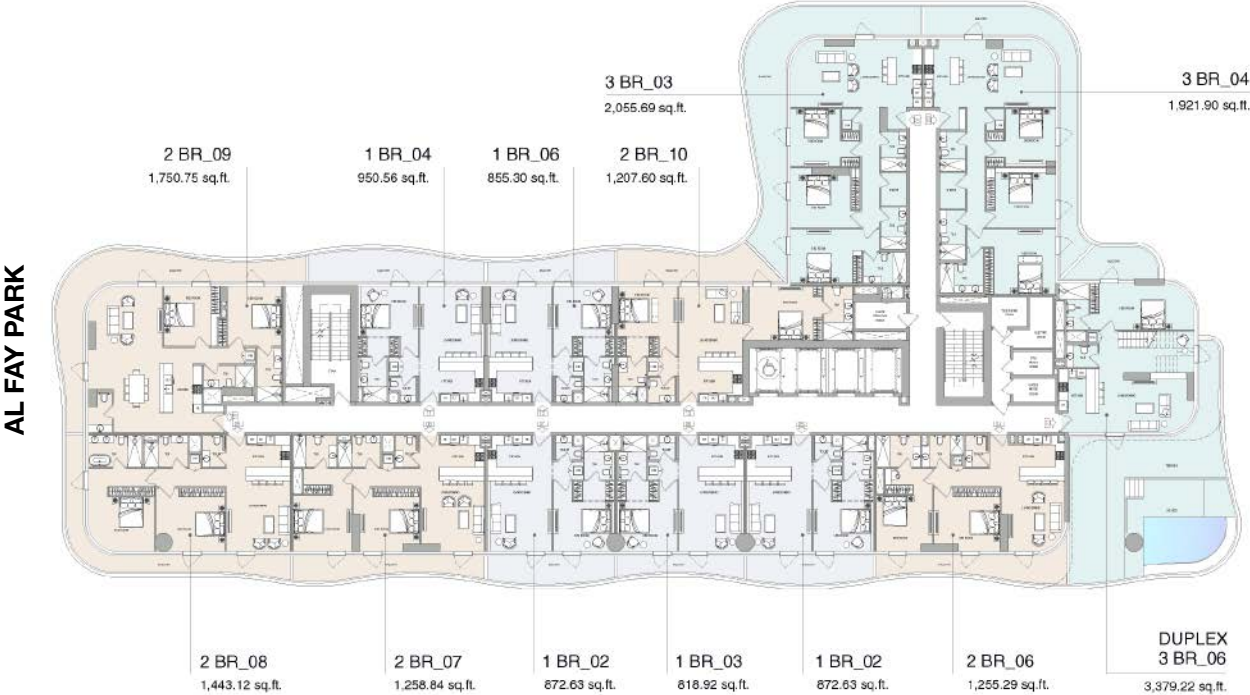


Disclaimer: all pictures, plans, layouts, information, data and details included in this brochure are indicative only may change at any time up to the final "as built" status in accordance with the final designs of the project, regulatory approvals and planning permissions

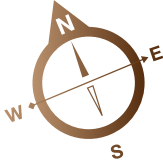
FLOOR 5



THE GATE DISTRICT



SORBONNE UNIVERSITY ABU DHABI



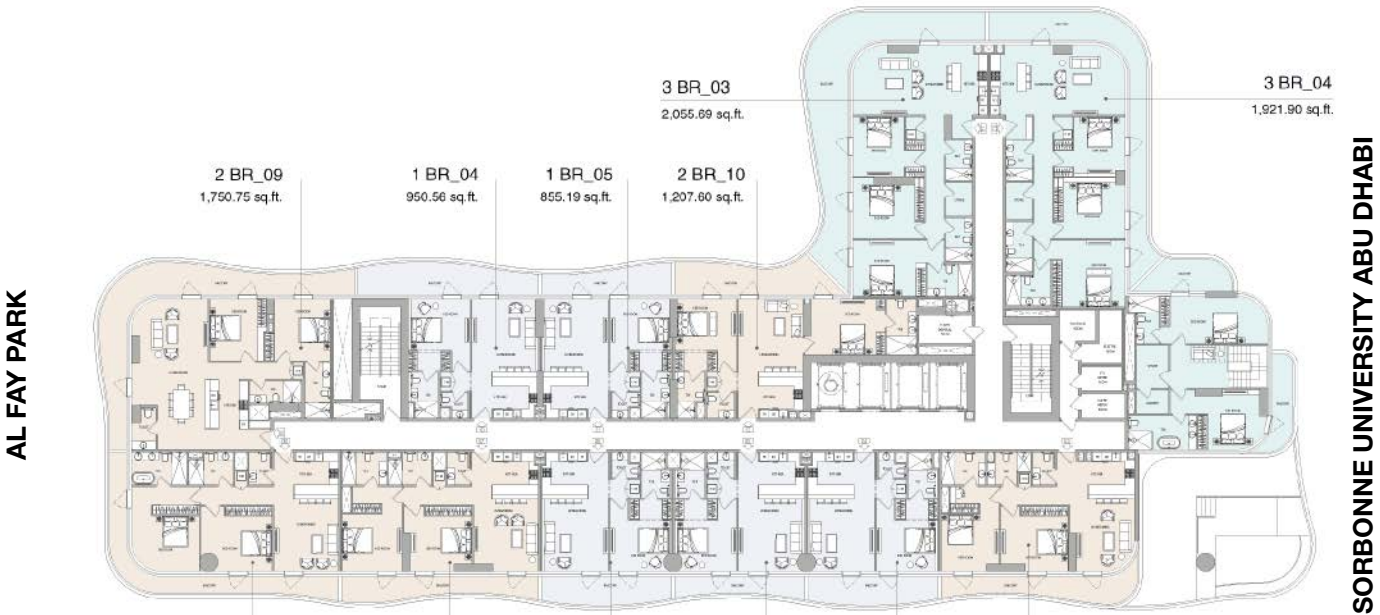
AL REEM ISLAND CANAL

Disclaimer: all pictures, plans, layouts, information, data and details included in this brochure are indicative only may change at any time up to the final "as built" status in accordance with the final designs of the project, regulatory approvals and planning permissions

FLOOR 6



THE GATE DISTRICT



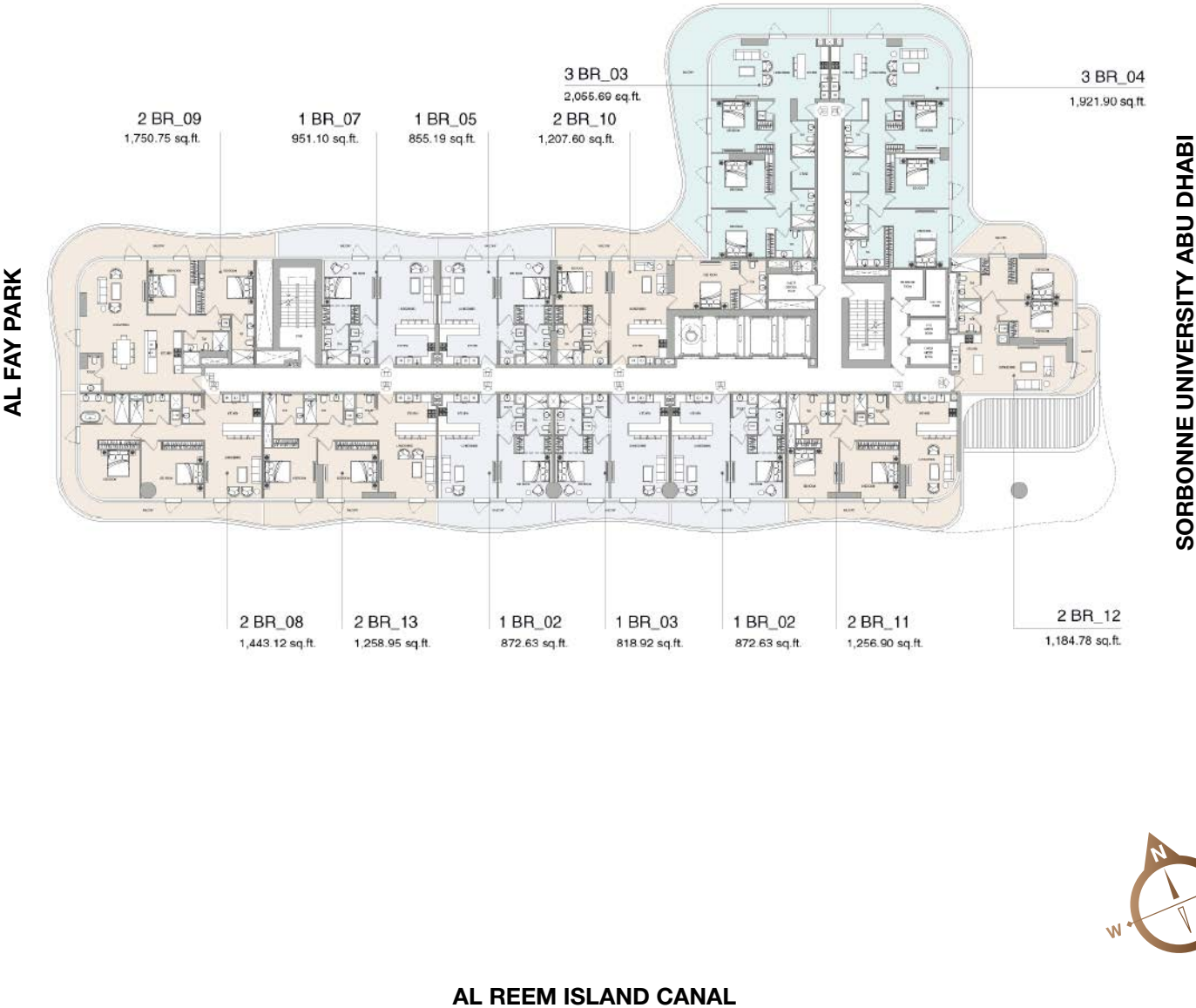
AL REEM ISLAND CANAL

Disclaimer: all pictures, plans, layouts, information, data and details included in this brochure are indicative only may change at any time up to the final "as built" status in accordance with the final designs of the project, regulatory approvals and planning permissions

FLOOR 7



THE GATE DISTRICT

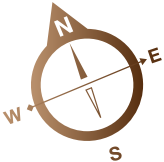
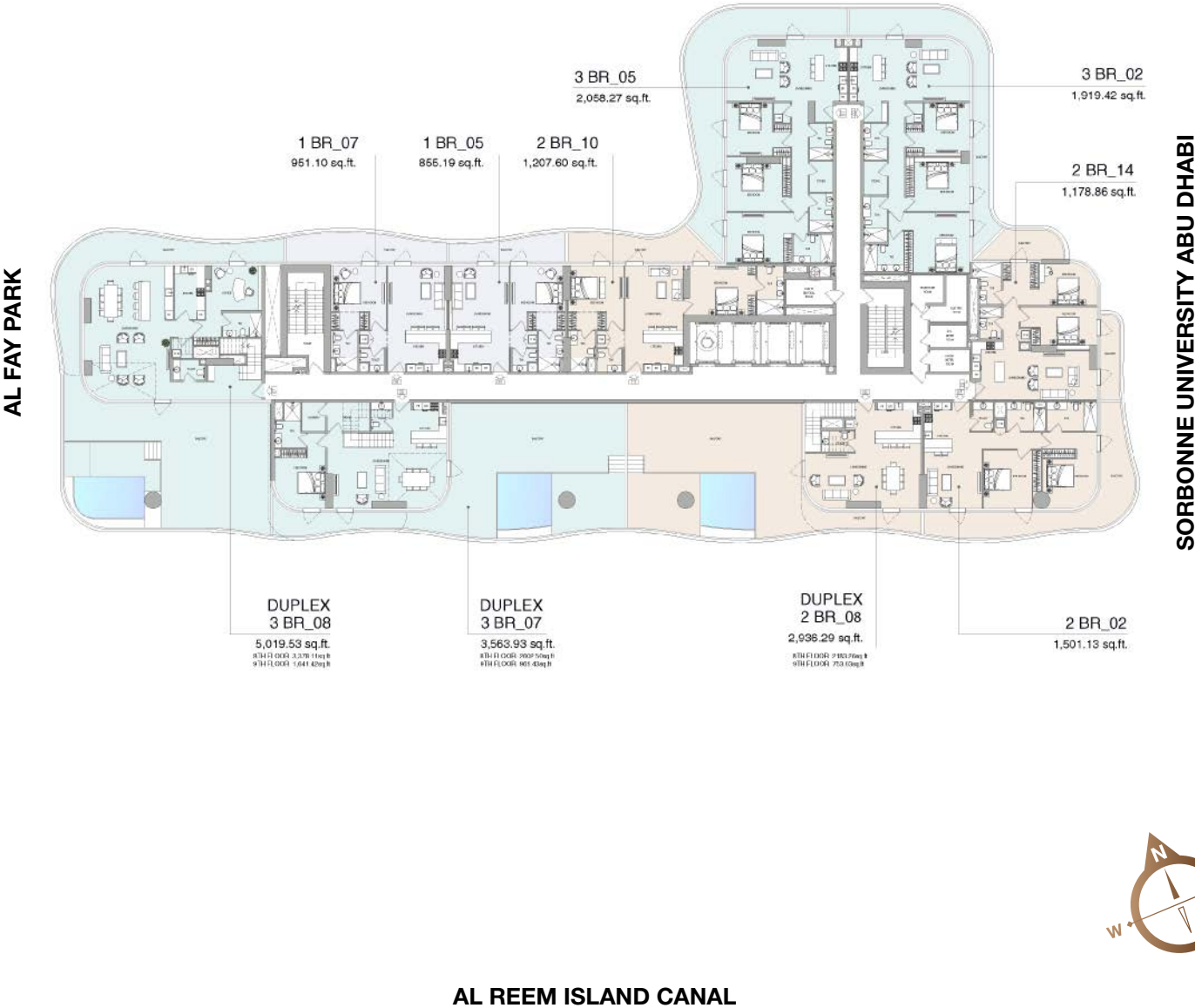


Disclaimer: all pictures, plans, layouts, information, data and details included in this brochure are indicative only may change at any time up to the final "as built" status in accordance with the final designs of the project, regulatory approvals and planning permissions

FLOOR 8



THE GATE DISTRICT

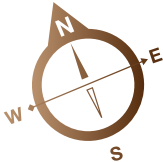
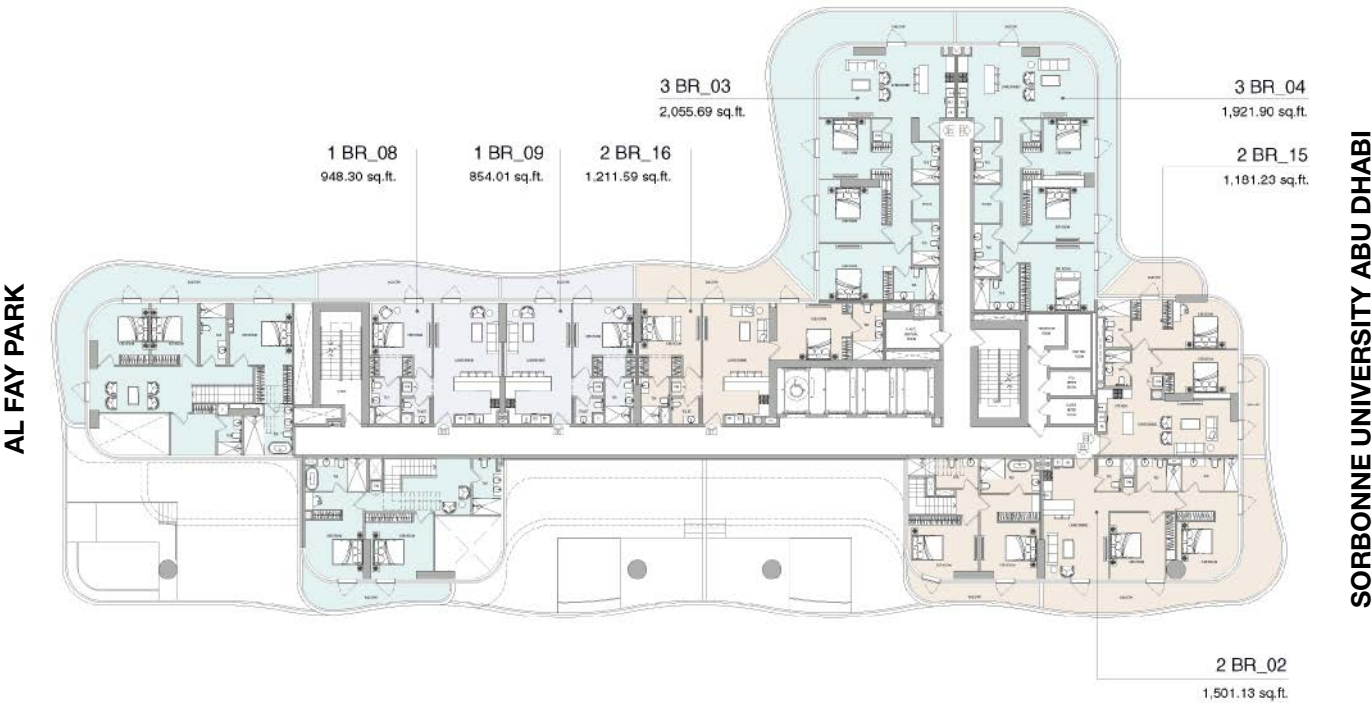


Disclaimer: all pictures, plans, layouts, information, data and details included in this brochure are indicative only may change at any time up to the final "as built" status in accordance with the final designs of the project, regulatory approvals and planning permissions

FLOOR 9



THE GATE DISTRICT



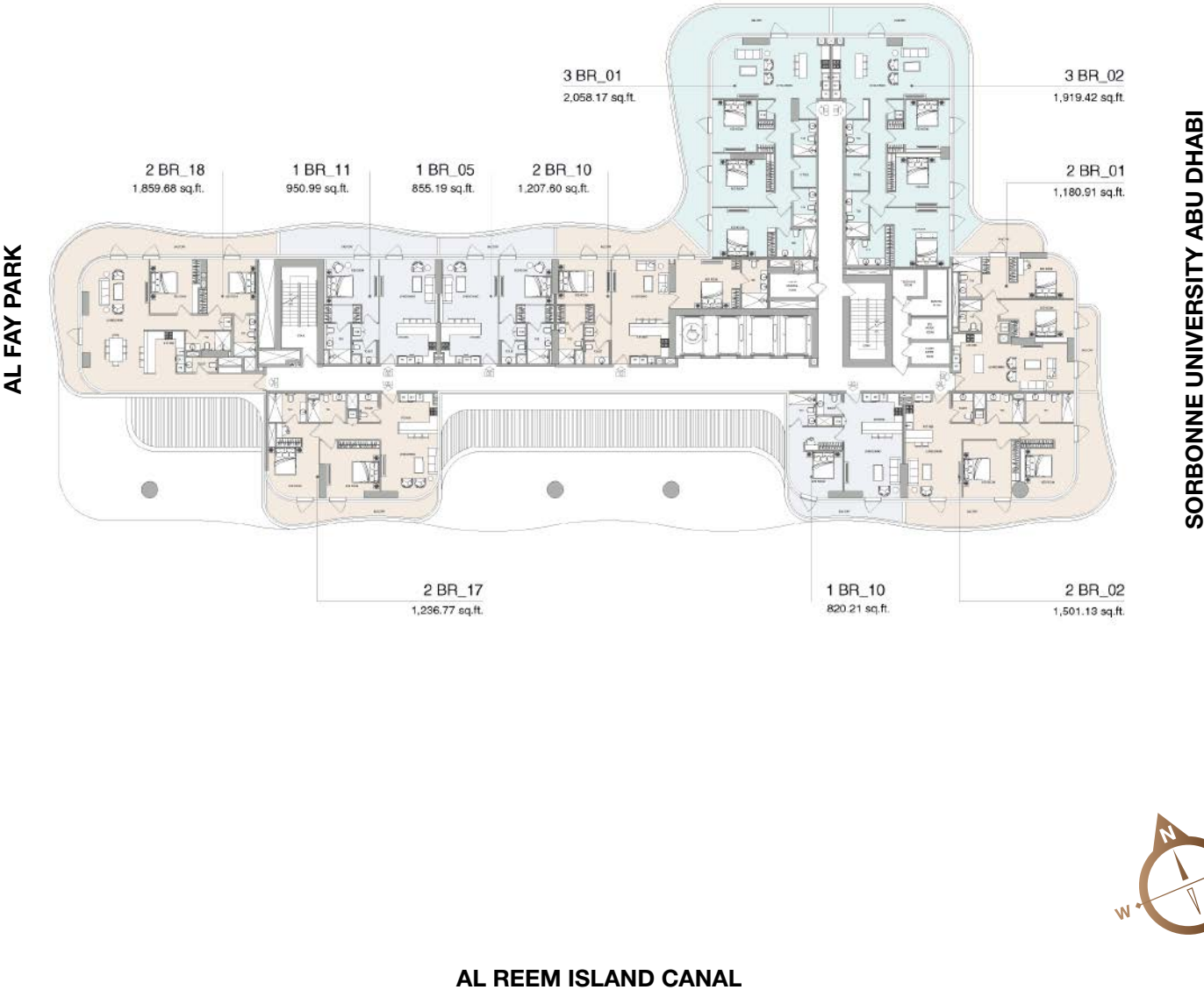
AL REEM ISLAND CANAL

Disclaimer: all pictures, plans, layouts, information, data and details included in this brochure are indicative only may change at any time up to the final "as built" status in accordance with the final designs of the project, regulatory approvals and planning permissions

FLOOR 10



THE GATE DISTRICT

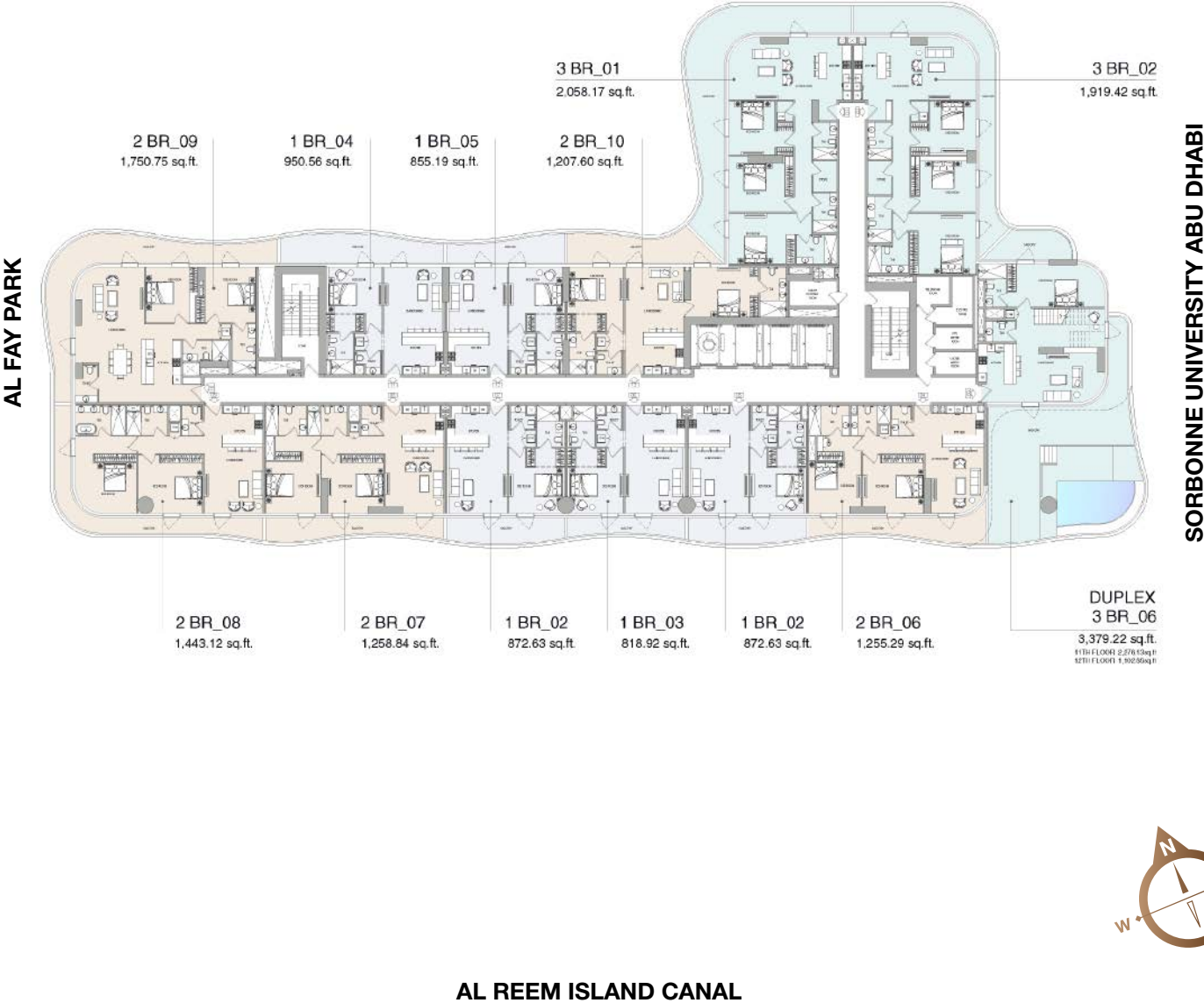


Disclaimer: all pictures, plans, layouts, information, data and details included in this brochure are indicative only may change at any time up to the final "as built" status in accordance with the final designs of the project, regulatory approvals and planning permissions

FLOOR 11



THE GATE DISTRICT



Disclaimer: all pictures, plans, layouts, information, data and details included in this brochure are indicative only may change at any time up to the final "as built" status in accordance with the final designs of the project, regulatory approvals and planning permissions

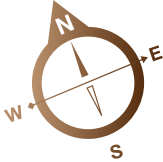
FLOOR 12



THE GATE DISTRICT

AL FAY PARK

SORBONNE UNIVERSITY ABU DHABI



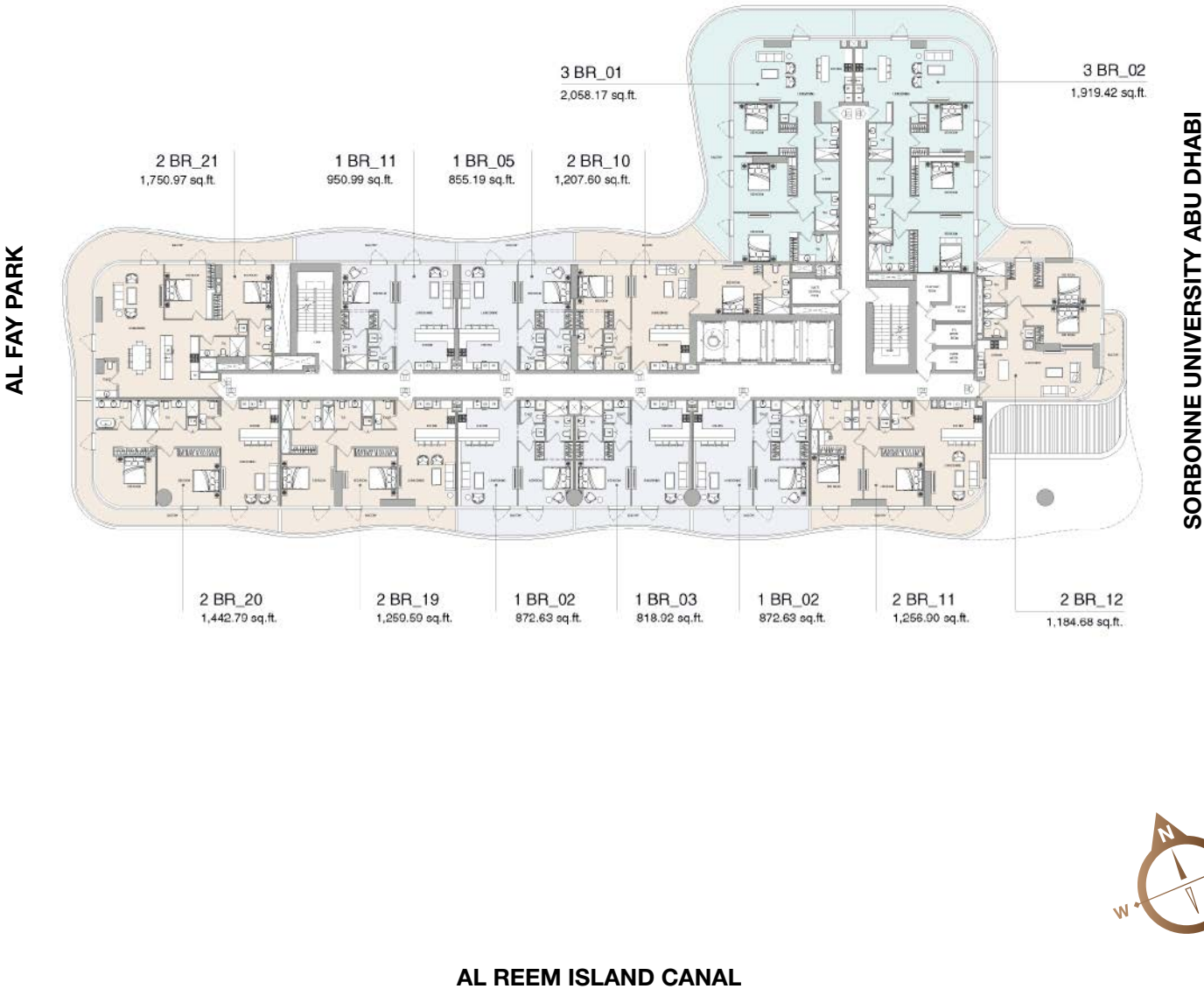
AL REEM ISLAND CANAL

Disclaimer: all pictures, plans, layouts, information, data and details included in this brochure are indicative only may change at any time up to the final "as built" status in accordance with the final designs of the project, regulatory approvals and planning permissions

FLOOR 13



THE GATE DISTRICT

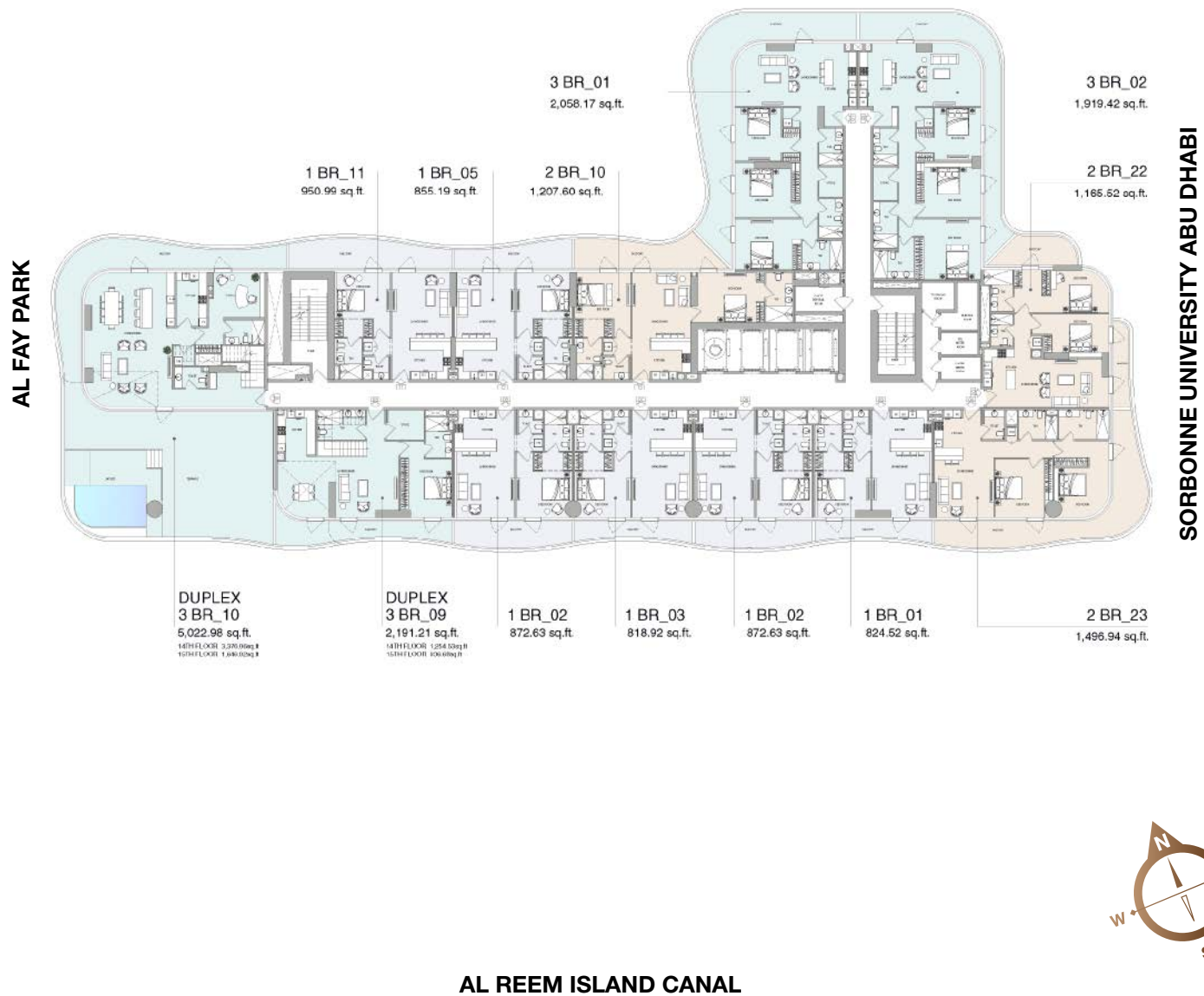


Disclaimer: all pictures, plans, layouts, information, data and details included in this brochure are indicative only may change at any time up to the final "as built" status in accordance with the final designs of the project, regulatory approvals and planning permissions

FLOOR 14



THE GATE DISTRICT

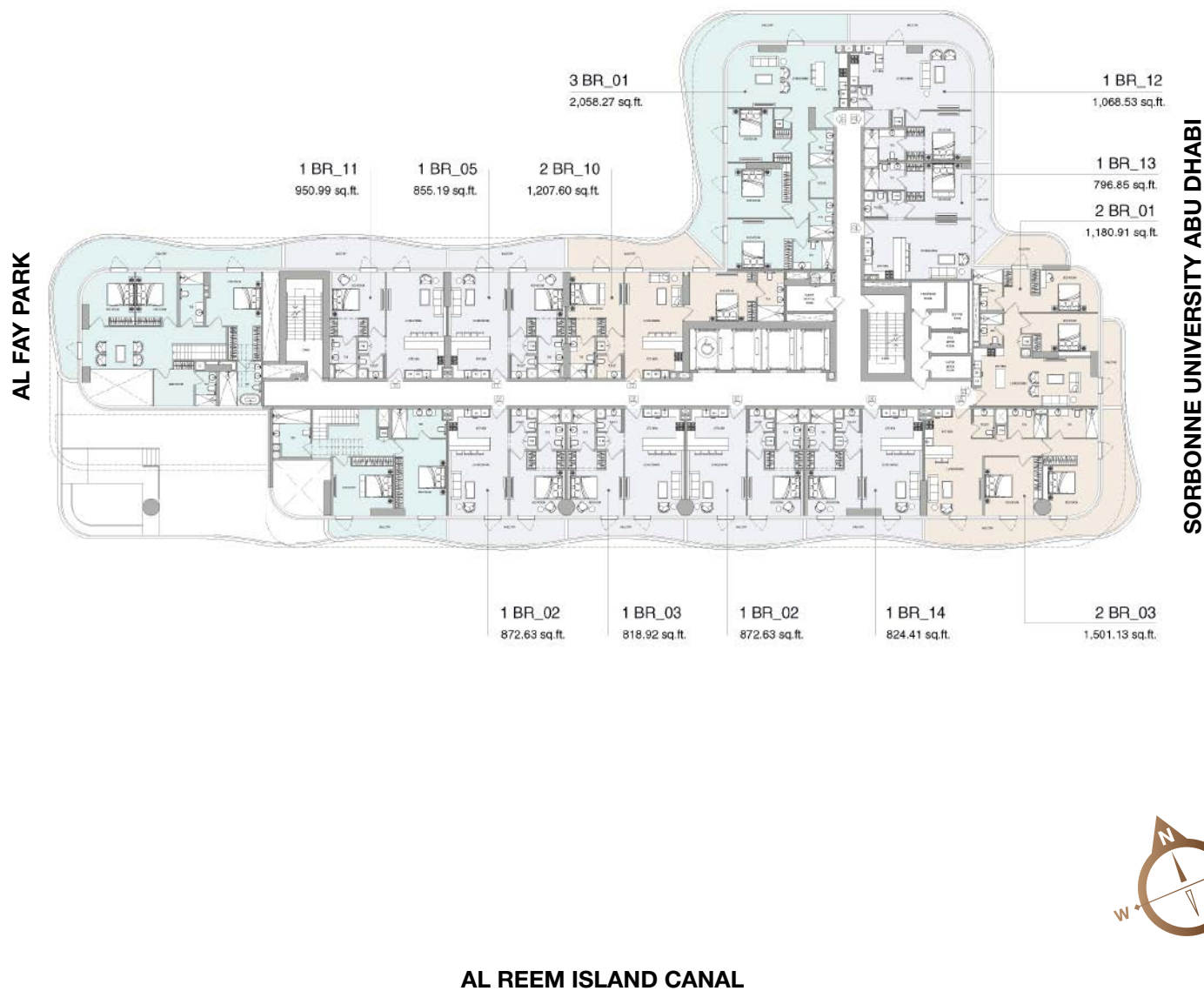


Disclaimer: all pictures, plans, layouts, information, data and details included in this brochure are indicative only may change at any time up to the final "as built" status in accordance with the final designs of the project, regulatory approvals and planning permissions

FLOOR 15



THE GATE DISTRICT

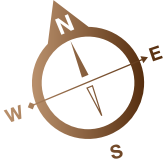
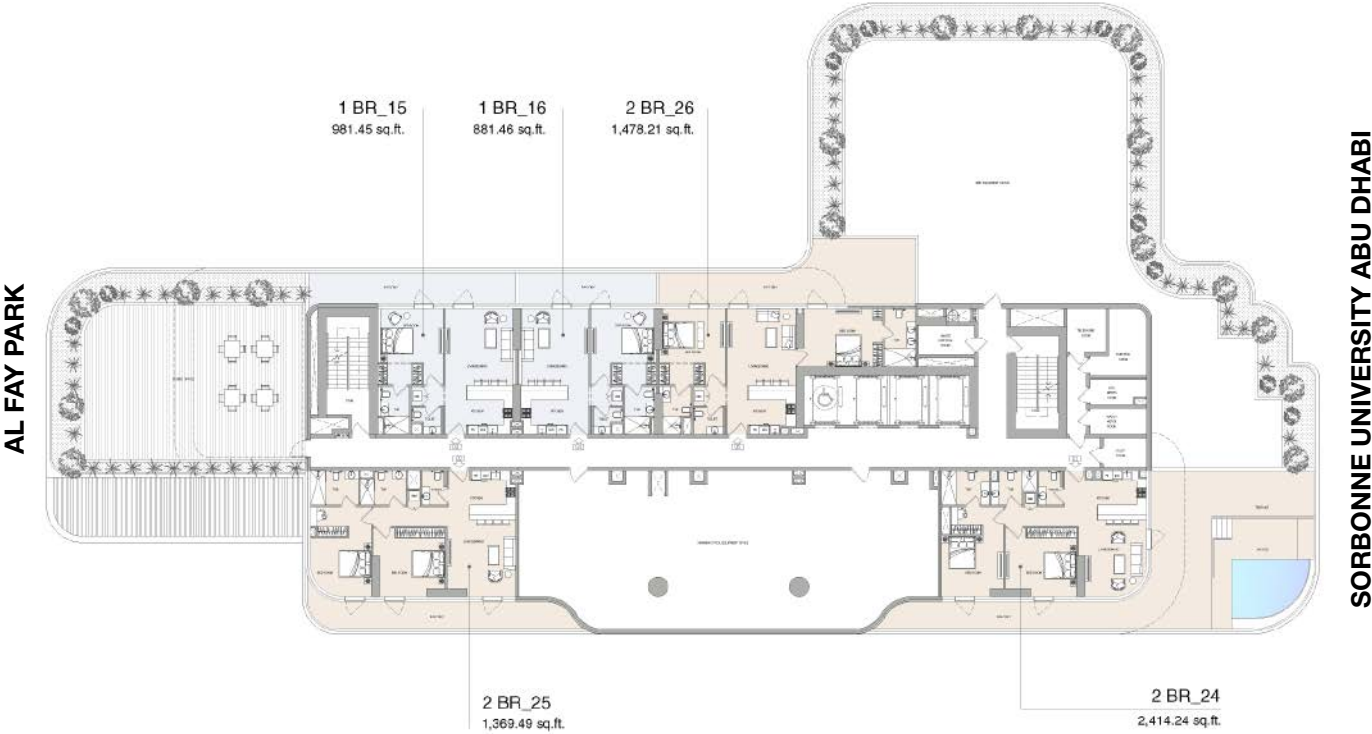


Disclaimer: all pictures, plans, layouts, information, data and details included in this brochure are indicative only may change at any time up to the final "as built" status in accordance with the final designs of the project, regulatory approvals and planning permissions

FLOOR 16



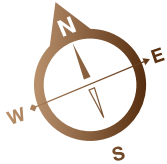
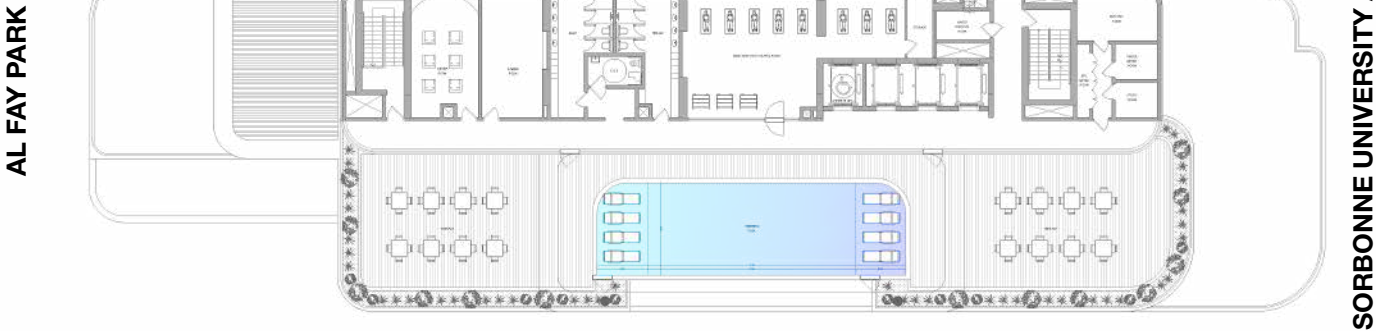
THE GATE DISTRICT



AL REEM ISLAND CANAL

Disclaimer: all pictures, plans, layouts, information, data and details included in this brochure are indicative only may change at any time up to the final "as built" status in accordance with the final designs of the project, regulatory approvals and planning permissions

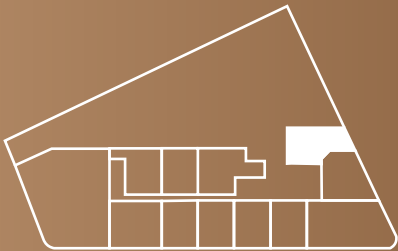
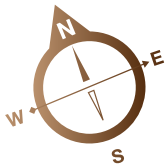
THE GATE DISTRICT



Duplex



DUPLEX
FLOOR: 1, 2



DUPLEX 2 BEDROOM_01

SUITE AREA	1,375.95 sq. ft
BALCONY AREA	535.93 sq. ft
TOTAL SELLABLE AREA	1,911.89 sq. ft

Disclaimer: all pictures, plans, layouts, information, data and details included in this brochure are indicative only may change at any time up to the final "as built" status in accordance with the final designs of the project, regulatory approvals and planning permissions

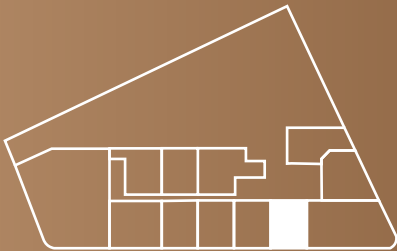
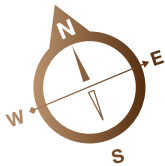
DUPLEX
FLOOR: 1, 2



LOWER LEVEL



UPPER LEVEL



DUPLEX 2 BEDROOM_02

SUITE AREA	1,377.78 sq. ft
BALCONY AREA	381.36 sq. ft
TOTAL SELLABLE AREA	1,759.15 sq. ft

Disclaimer: all pictures, plans, layouts, information, data and details included in this brochure are indicative only may change at any time up to the final "as built" status in accordance with the final designs of the project, regulatory approvals and planning permissions

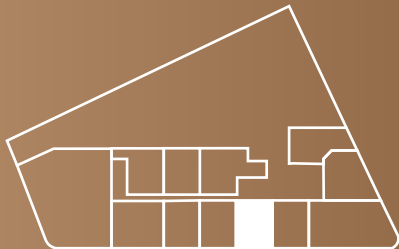
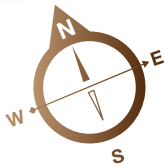
DUPLEX
FLOOR: 1, 2



LOWER LEVEL



UPPER LEVEL



DUPLEX 2 BEDROOM_03

SUITE AREA	1,376.16	sq. ft
BALCONY AREA	431.74	sq. ft
TOTAL SELLABLE AREA	1,807.91	sq. ft

Disclaimer: all pictures, plans, layouts, information, data and details included in this brochure are indicative only may change at any time up to the final "as built" status in accordance with the final designs of the project, regulatory approvals and planning permissions

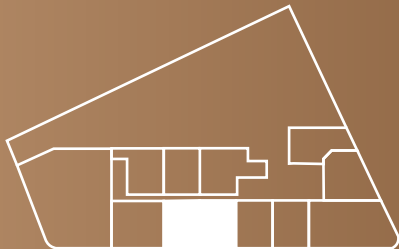
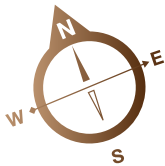
DUPLEX
FLOOR: 1, 2



LOWER LEVEL



UPPER LEVEL



DUPLEX 2 BEDROOM_04

SUITE AREA	1,366.69 sq. ft
BALCONY AREA	382.76 sq. ft
TOTAL SELLABLE AREA	1,749.46 sq. ft

Disclaimer: all pictures, plans, layouts, information, data and details included in this brochure are indicative only may change at any time up to the final "as built" status in accordance with the final designs of the project, regulatory approvals and planning permissions

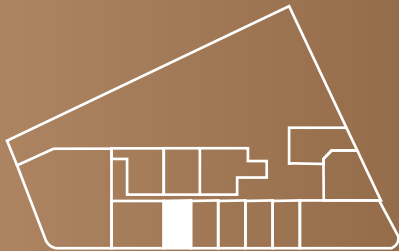
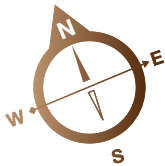
DUPLEX
FLOOR: 1, 2



LOWER LEVEL



UPPER LEVEL

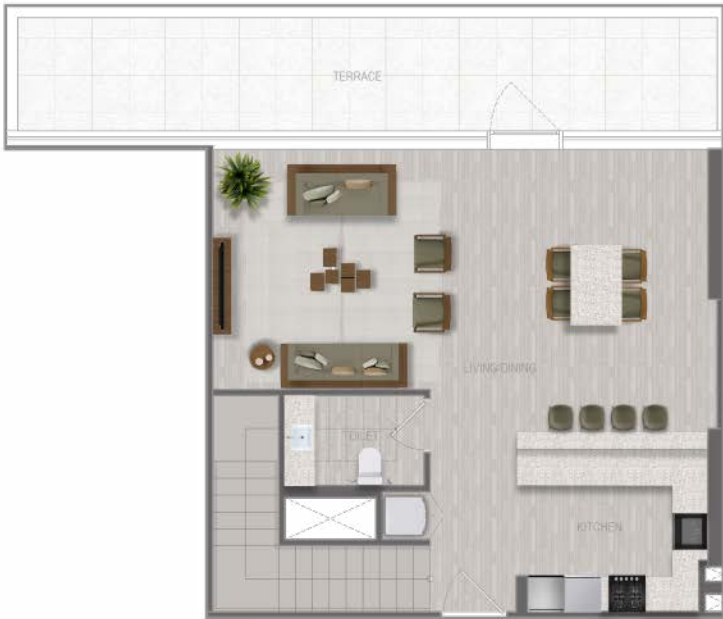


DUPLEX 2 BEDROOM_05

SUITE AREA	1,376.27	sq. ft
BALCONY AREA	431.74	sq. ft
TOTAL SELLABLE AREA	1,808.01	sq. ft

Disclaimer: all pictures, plans, layouts, information, data and details included in this brochure are indicative only may change at any time up to the final "as built" status in accordance with the final designs of the project, regulatory approvals and planning permissions

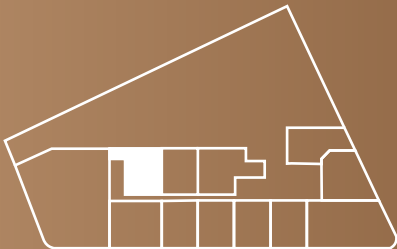
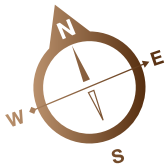
DUPLEX
FLOOR: 1, 2



LOWER LEVEL



UPPER LEVEL



DUPLEX 2 BEDROOM_06

SUITE AREA	1,365.62 sq. ft
BALCONY AREA	582.00 sq. ft
TOTAL SELLABLE AREA	1,947.62 sq. ft

Disclaimer: all pictures, plans, layouts, information, data and details included in this brochure are indicative only may change at any time up to the final "as built" status in accordance with the final designs of the project, regulatory approvals and planning permissions

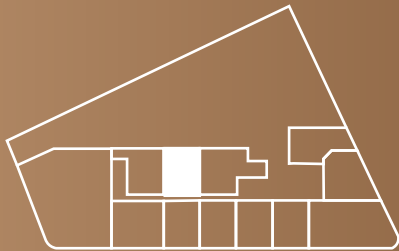
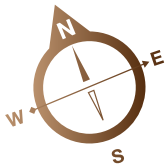
DUPLEX
FLOOR: 1, 2



LOWER LEVEL



UPPER LEVEL



DUPLEX 2 BEDROOM_07

SUITE AREA	1,360.02 sq. ft
BALCONY AREA	397.62 sq. ft
TOTAL SELLABLE AREA	1,757.64 sq. ft

Disclaimer: all pictures, plans, layouts, information, data and details included in this brochure are indicative only may change at any time up to the final "as built" status in accordance with the final designs of the project, regulatory approvals and planning permissions

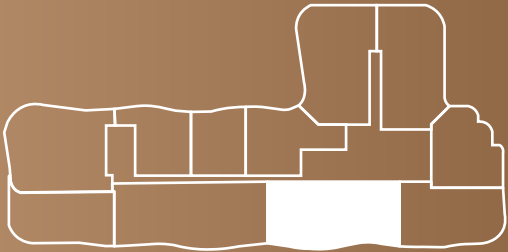
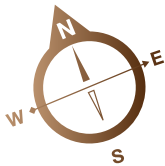
DUPLEX
FLOOR: 8



LOWER LEVEL



UPPER LEVEL



DUPLEX 2 BEDROOM_08

SUITE AREA	1,285.86 sq. ft
BALCONY AREA	1,650.43 sq. ft
TOTAL SELLABLE AREA	2,936.29 sq. ft

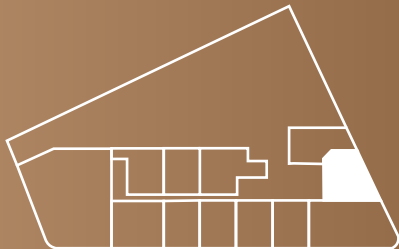
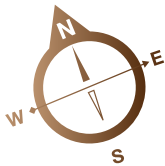
Disclaimer: all pictures, plans, layouts, information, data and details included in this brochure are indicative only may change at any time up to the final "as built" status in accordance with the final designs of the project, regulatory approvals and planning permissions

DUPLEX
FLOOR: 1, 2



LOWER LEVEL

UPPER LEVEL



DUPLEX 3 BEDROOM_01

SUITE AREA	1,726.10 sq. ft
BALCONY AREA	627.10 sq. ft
TOTAL SELLABLE AREA	2,353.21 sq. ft

Disclaimer: all pictures, plans, layouts, information, data and details included in this brochure are indicative only may change at any time up to the final "as built" status in accordance with the final designs of the project, regulatory approvals and planning permissions

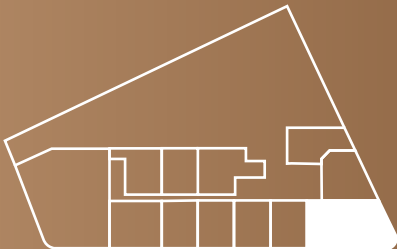
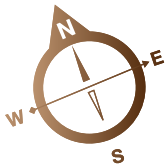
DUPLEX
FLOOR: 1, 2



LOWER LEVEL



UPPER LEVEL



DUPLEX 3 BEDROOM_02

SUITE AREA	1,862.69 sq. ft
BALCONY AREA	1,505.22 sq. ft
TOTAL SELLABLE AREA	3,367.92 sq. ft

Disclaimer: all pictures, plans, layouts, information, data and details included in this brochure are indicative only may change at any time up to the final "as built" status in accordance with the final designs of the project, regulatory approvals and planning permissions

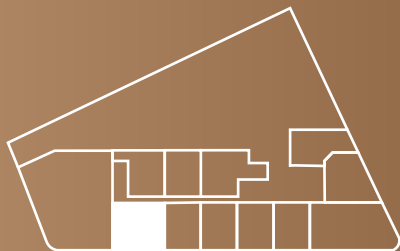
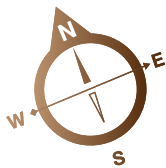
DUPLEX
FLOOR: 1, 2



LOWER LEVEL



UPPER LEVEL



DUPLEX 3 BEDROOM_03

SUITE AREA	1,878.30 sq. ft
BALCONY AREA	504.50 sq. ft
TOTAL SELLABLE AREA	2,382.81 sq. ft

Disclaimer: all pictures, plans, layouts, information, data and details included in this brochure are indicative only may change at any time up to the final "as built" status in accordance with the final designs of the project, regulatory approvals and planning permissions

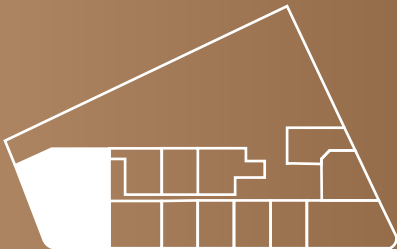
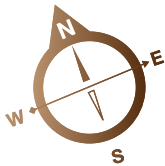
DUPLEX
FLOOR: 1, 2



LOWER LEVEL



UPPER LEVEL



DUPLEX 3 BEDROOM_04

SUITE AREA	2,431.57 sq. ft
BALCONY AREA	3,378.68 sq. ft
TOTAL SELLABLE AREA	5,810.25 sq. ft

Disclaimer: all pictures, plans, layouts, information, data and details included in this brochure are indicative only may change at any time up to the final "as built" status in accordance with the final designs of the project, regulatory approvals and planning permissions

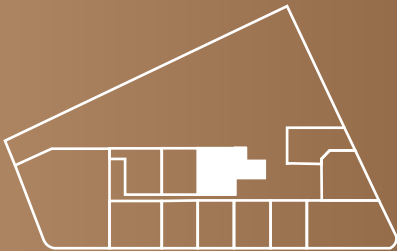
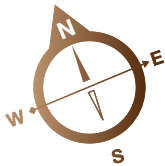
DUPLEX
FLOOR: 1, 2



LOWER LEVEL



UPPER LEVEL



DUPLEX 3 BEDROOM_05

SUITE AREA	1,907.36 sq. ft
BALCONY AREA	547.99 sq. ft
TOTAL SELLABLE AREA	2,455.36 sq. ft

Disclaimer: all pictures, plans, layouts, information, data and details included in this brochure are indicative only may change at any time up to the final "as built" status in accordance with the final designs of the project, regulatory approvals and planning permissions

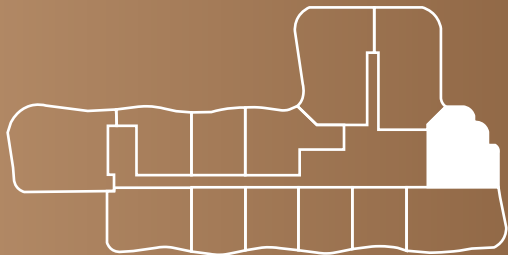
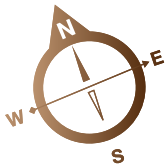
DUPLEX
FLOOR: 5, 11



LOWER LEVEL



UPPER LEVEL



DUPLEX 3 BEDROOM_06

SUITE AREA	1,726.96 sq. ft
BALCONY AREA	1,652.26 sq. ft
TOTAL SELLABLE AREA	3,379.22 sq. ft

Disclaimer: all pictures, plans, layouts, information, data and details included in this brochure are indicative only may change at any time up to the final "as built" status in accordance with the final designs of the project, regulatory approvals and planning permissions

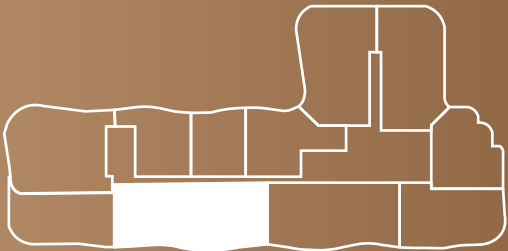
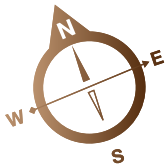
DUPLEX
FLOOR: 8



LOWER LEVEL



UPPER LEVEL



DUPLEX 3 BEDROOM_07

SUITE AREA	1,771.31 sq. ft
BALCONY AREA	1,792.62 sq. ft
TOTAL SELLABLE AREA	3,563.93 sq. ft

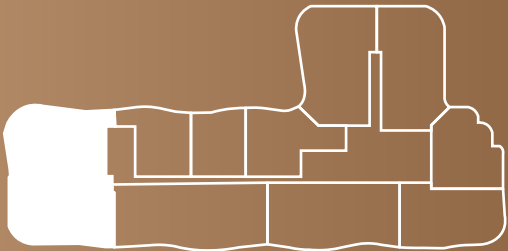
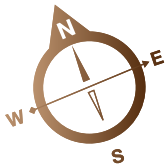
Disclaimer: all pictures, plans, layouts, information, data and details included in this brochure are indicative only may change at any time up to the final "as built" status in accordance with the final designs of the project, regulatory approvals and planning permissions

DUPLEX
FLOOR: 8



LOWER LEVEL

UPPER LEVEL



DUPLEX 3 BEDROOM_08

SUITE AREA	2,445.99 sq. ft
BALCONY AREA	2,573.54 sq. ft
TOTAL SELLABLE AREA	5,019.53 sq. ft

Disclaimer: all pictures, plans, layouts, information, data and details included in this brochure are indicative only may change at any time up to the final "as built" status in accordance with the final designs of the project, regulatory approvals and planning permissions

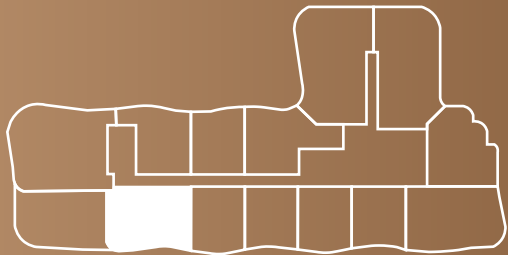
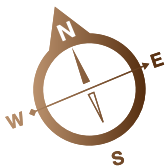
DUPLEX
FLOOR: 14



LOWER LEVEL



UPPER LEVEL



DUPLEX 3 BEDROOM_09

SUITE AREA	1,794.13 sq. ft
BALCONY AREA	397.08 sq. ft
TOTAL SELLABLE AREA	2,191.21 sq. ft

Disclaimer: all pictures, plans, layouts, information, data and details included in this brochure are indicative only may change at any time up to the final "as built" status in accordance with the final designs of the project, regulatory approvals and planning permissions

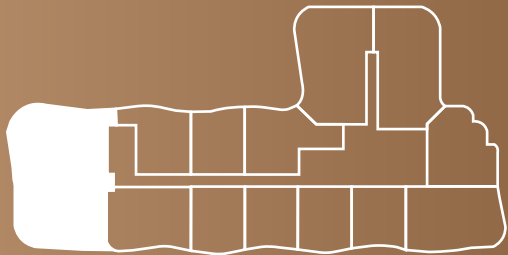
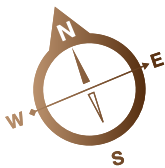
DUPLEX
FLOOR: 14



LOWER LEVEL



UPPER LEVEL



DUPLEX 3 BEDROOM_10

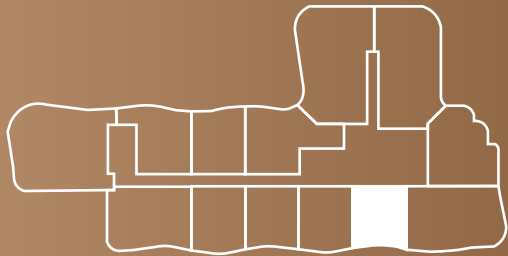
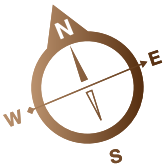
SUITE AREA	2,449.33 sq. ft
BALCONY AREA	2,573.65 sq. ft
TOTAL SELLABLE AREA	5,022.98 sq. ft

Disclaimer: all pictures, plans, layouts, information, data and details included in this brochure are indicative only may change at any time up to the final "as built" status in accordance with the final designs of the project, regulatory approvals and planning permissions

One Bedroom



ONE BEDROOM
FLOOR: 3, 4, 14



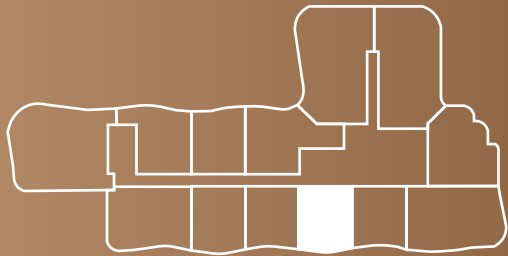
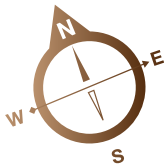
1 BR TYPE 01

SUITE AREA	677.91	sq. ft
BALCONY AREA	146.60	sq. ft
TOTAL SELLABLE AREA	824.52	sq. ft

Disclaimer: all pictures, plans, layouts, information, data and details included in this brochure are indicative only may change at any time up to the final "as built" status in accordance with the final designs of the project, regulatory approvals and planning permissions

ONE BEDROOM

FLOOR: 3, 4, 5, 6, 7, 11, 12, 13, 14, 15



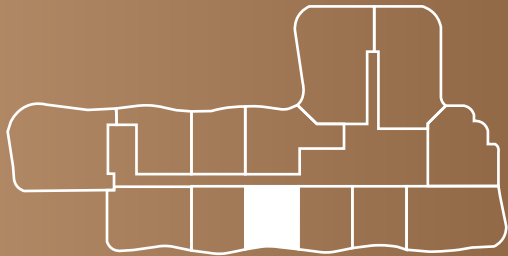
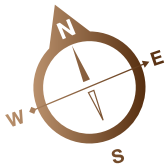
1 BR TYPE 02

SUITE AREA	677.05	sq. ft
BALCONY AREA	195.58	sq. ft
TOTAL SELLABLE AREA	872.63	sq. ft

Disclaimer: all pictures, plans, layouts, information, data and details included in this brochure are indicative only may change at any time up to the final "as built" status in accordance with the final designs of the project, regulatory approvals and planning permissions

ONE BEDROOM

FLOOR: 3, 4, 5, 6, 7, 12, 13, 14, 15



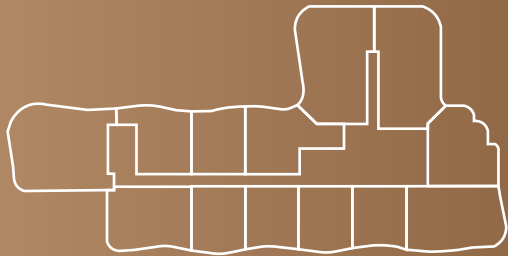
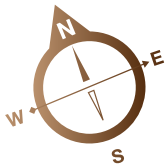
1 BR TYPE 03

SUITE AREA	672.31	sq. ft
BALCONY AREA	146.60	sq. ft
TOTAL SELLABLE AREA	818.92	sq. ft

Disclaimer: all pictures, plans, layouts, information, data and details included in this brochure are indicative only may change at any time up to the final "as built" status in accordance with the final designs of the project, regulatory approvals and planning permissions

ONE BEDROOM

FLOOR: 3, 4, 5, 6, 10, 11, 12



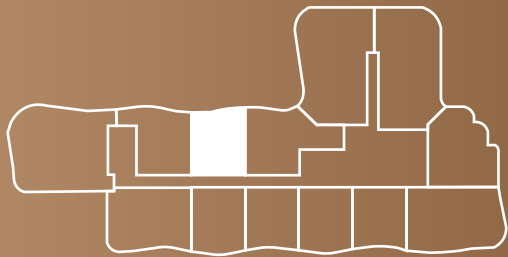
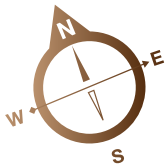
1 BR TYPE 04

SUITE AREA	671.24	sq. ft
BALCONY AREA	279.32	sq. ft
TOTAL SELLABLE AREA	950.56	sq. ft

Disclaimer: all pictures, plans, layouts, information, data and details included in this brochure are indicative only may change at any time up to the final "as built" status in accordance with the final designs of the project, regulatory approvals and planning permissions

ONE BEDROOM

FLOOR: 3, 4, 6, 7, 8, 9, 10, 11, 12, 13, 14, 15

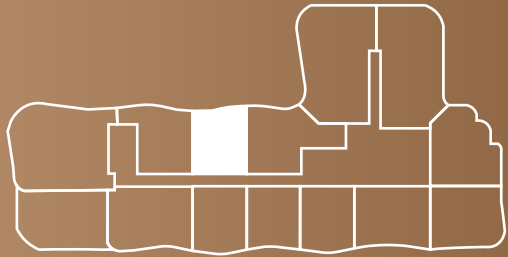
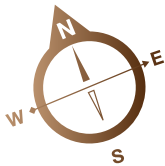


1 BR TYPE 05

SUITE AREA	673.50	sq. ft
BALCONY AREA	181.69	sq. ft
TOTAL SELLABLE AREA	855.19	sq. ft

Disclaimer: all pictures, plans, layouts, information, data and details included in this brochure are indicative only may change at any time up to the final "as built" status in accordance with the final designs of the project, regulatory approvals and planning permissions

ONE BEDROOM
FLOOR: 5

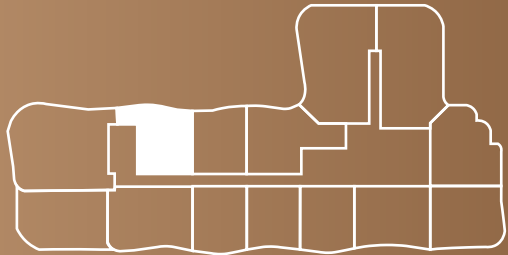
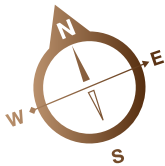


1 BR TYPE 06

SUITE AREA	673.60	sq. ft
BALCONY AREA	181.69	sq. ft
TOTAL SELLABLE AREA	855.30	sq. ft

Disclaimer: all pictures, plans, layouts, information, data and details included in this brochure are indicative only may change at any time up to the final "as built" status in accordance with the final designs of the project, regulatory approvals and planning permissions

ONE BEDROOM
FLOOR: 7, 8

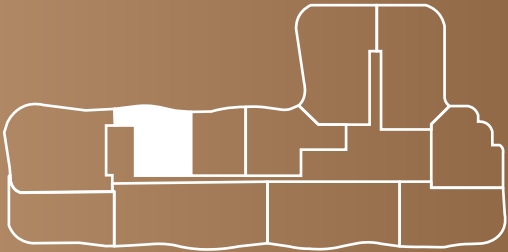
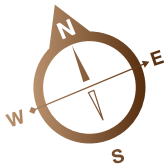


1 BR TYPE 07

SUITE AREA	671.77	sq. ft
BALCONY AREA	279.32	sq. ft
TOTAL SELLABLE AREA	951.10	sq. ft

Disclaimer: all pictures, plans, layouts, information, data and details included in this brochure are indicative only may change at any time up to the final "as built" status in accordance with the final designs of the project, regulatory approvals and planning permissions

ONE BEDROOM
FLOOR: 9

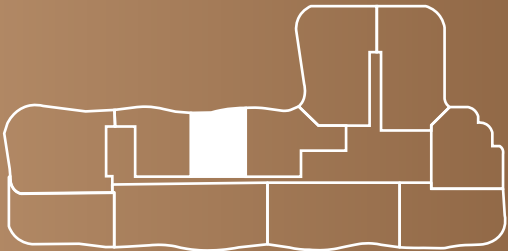
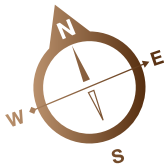


1 BR TYPE 08

SUITE AREA	671.77	sq. ft
BALCONY AREA	276.52	sq. ft
TOTAL SELLABLE AREA	948.30	sq. ft

Disclaimer: all pictures, plans, layouts, information, data and details included in this brochure are indicative only may change at any time up to the final "as built" status in accordance with the final designs of the project, regulatory approvals and planning permissions

ONE BEDROOM
FLOOR: 9

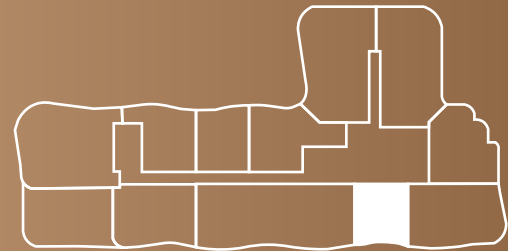
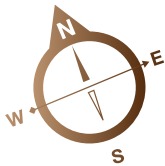


1 BR TYPE 09

SUITE AREA	673.50	sq. ft
BALCONY AREA	180.51	sq. ft
TOTAL SELLABLE AREA	854.01	sq. ft

Disclaimer: all pictures, plans, layouts, information, data and details included in this brochure are indicative only may change at any time up to the final "as built" status in accordance with the final designs of the project, regulatory approvals and planning permissions

ONE BEDROOM
FLOOR: 10



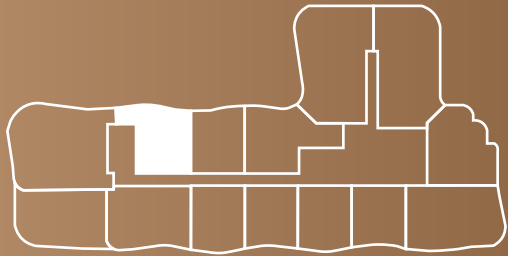
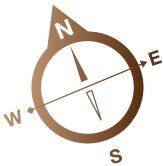
1 BR TYPE 10

SUITE AREA	671.45	sq. ft
BALCONY AREA	148.76	sq. ft
TOTAL SELLABLE AREA	820.21	sq. ft

Disclaimer: all pictures, plans, layouts, information, data and details included in this brochure are indicative only may change at any time up to the final "as built" status in accordance with the final designs of the project, regulatory approvals and planning permissions

ONE BEDROOM

FLOOR: 10, 13, 14, 15

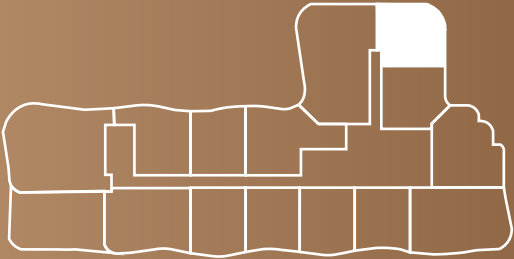
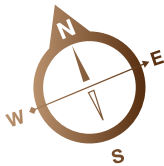


1 BR TYPE 11

SUITE AREA	671.67	sq. ft
BALCONY AREA	279.32	sq. ft
TOTAL SELLABLE AREA	950.99	sq. ft

Disclaimer: all pictures, plans, layouts, information, data and details included in this brochure are indicative only may change at any time up to the final "as built" status in accordance with the final designs of the project, regulatory approvals and planning permissions

ONE BEDROOM
FLOOR: 15

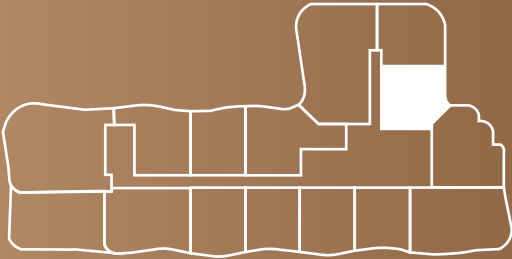
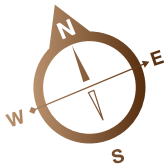


1 BR TYPE 12

SUITE AREA	706.00	sq. ft
BALCONY AREA	362.53	sq. ft
TOTAL SELLABLE AREA	1,068.53	sq. ft

Disclaimer: all pictures, plans, layouts, information, data and details included in this brochure are indicative only may change at any time up to the final "as built" status in accordance with the final designs of the project, regulatory approvals and planning permissions

ONE BEDROOM
FLOOR: 15

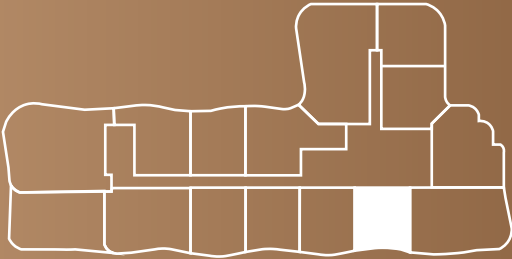
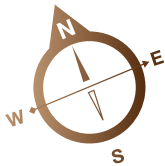


1 BR TYPE 13

SUITE AREA	677.26	sq. ft
BALCONY AREA	119.59	sq. ft
TOTAL SELLABLE AREA	796.85	sq. ft

Disclaimer: all pictures, plans, layouts, information, data and details included in this brochure are indicative only may change at any time up to the final "as built" status in accordance with the final designs of the project, regulatory approvals and planning permissions

ONE BEDROOM
FLOOR: 15

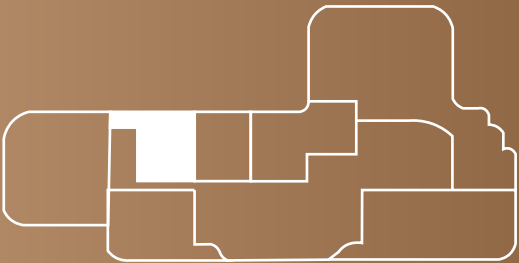
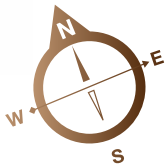


1 BR TYPE 14

SUITE AREA	677.80	sq. ft
BALCONY AREA	146.60	sq. ft
TOTAL SELLABLE AREA	824.41	sq. ft

Disclaimer: all pictures, plans, layouts, information, data and details included in this brochure are indicative only may change at any time up to the final "as built" status in accordance with the final designs of the project, regulatory approvals and planning permissions

ONE BEDROOM
FLOOR: 16

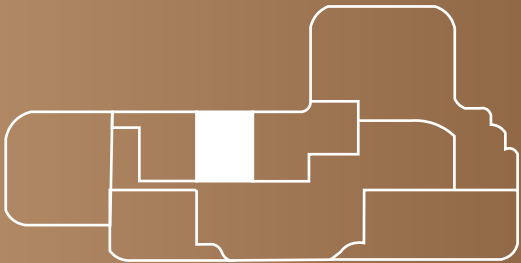
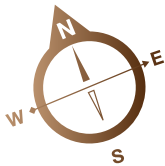


1 BR TYPE 15

SUITE AREA	671.77	sq. ft
BALCONY AREA	309.68	sq. ft
TOTAL SELLABLE AREA	981.45	sq. ft

Disclaimer: all pictures, plans, layouts, information, data and details included in this brochure are indicative only may change at any time up to the final "as built" status in accordance with the final designs of the project, regulatory approvals and planning permissions

ONE BEDROOM
FLOOR: 16



1 BR TYPE 16

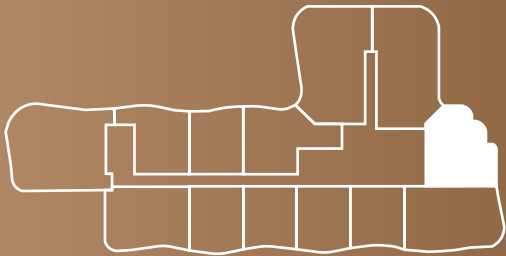
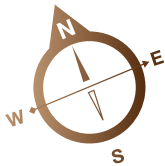
SUITE AREA	673.50	sq. ft
BALCONY AREA	207.96	sq. ft
TOTAL SELLABLE AREA	881.46	sq. ft

Disclaimer: all pictures, plans, layouts, information, data and details included in this brochure are indicative only may change at any time up to the final "as built" status in accordance with the final designs of the project, regulatory approvals and planning permissions

Two Bedroom



TWO BEDROOM
FLOOR: 3, 4, 10, 15



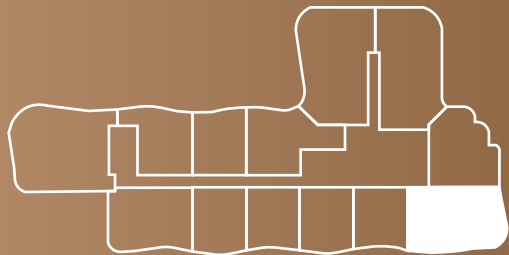
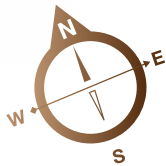
2 BR TYPE 01

SUITE AREA	919.56	sq. ft
BALCONY AREA	261.35	sq. ft
TOTAL SELLABLE AREA	1,180.91	sq. ft

Disclaimer: all pictures, plans, layouts, information, data and details included in this brochure are indicative only may change at any time up to the final "as built" status in accordance with the final designs of the project, regulatory approvals and planning permissions

TWO BEDROOM

FLOOR: 3, 4, 8, 9, 10, 14



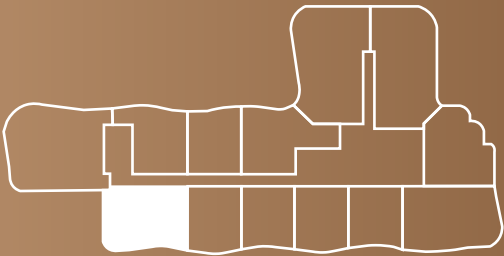
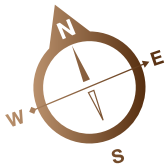
2 BR TYPE 02

SUITE AREA	999.54	sq. ft
BALCONY AREA	501.60	sq. ft
TOTAL SELLABLE AREA	1,501.13	sq. ft

Disclaimer: all pictures, plans, layouts, information, data and details included in this brochure are indicative only may change at any time up to the final "as built" status in accordance with the final designs of the project, regulatory approvals and planning permissions

TWO BEDROOM

FLOOR: 3, 4, 15



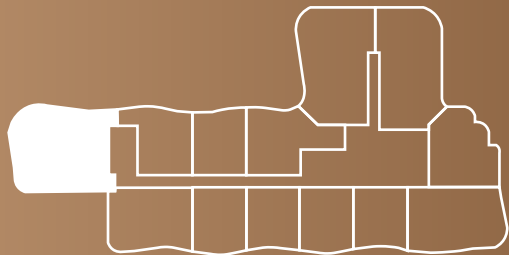
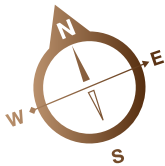
2 BR TYPE 03

SUITE AREA	1,002.23 sq. ft
BALCONY AREA	250.91 sq. ft
TOTAL SELLABLE AREA	1,253.13 sq. ft

Disclaimer: all pictures, plans, layouts, information, data and details included in this brochure are indicative only may change at any time up to the final "as built" status in accordance with the final designs of the project, regulatory approvals and planning permissions

TWO BEDROOM
FLOOR: 3, 4

A1LA
RESIDENCE

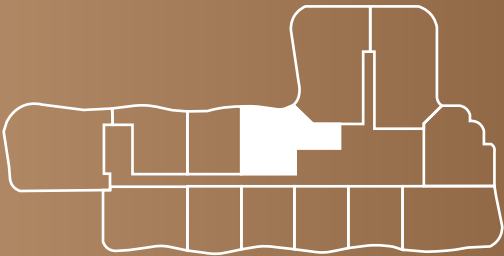
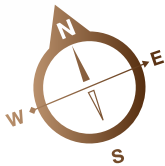


2 BR TYPE 04

SUITE AREA	1,303.29 sq. ft
BALCONY AREA	557.35 sq. ft
TOTAL SELLABLE AREA	1,860.65 sq. ft

Disclaimer: all pictures, plans, layouts, information, data and details included in this brochure are indicative only may change at any time up to the final "as built" status in accordance with the final designs of the project, regulatory approvals and planning permissions

TWO BEDROOM
FLOOR: 3, 4

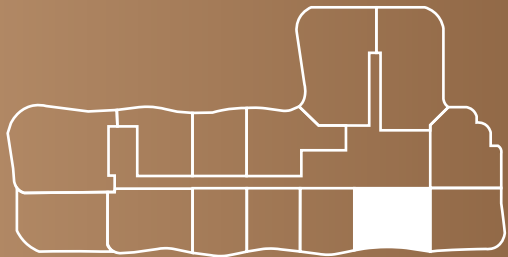
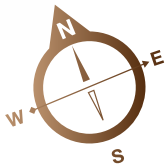


2 BR TYPE 05

SUITE AREA	947.55	sq. ft
BALCONY AREA	260.16	sq. ft
TOTAL SELLABLE AREA	1,207.71	sq. ft

Disclaimer: all pictures, plans, layouts, information, data and details included in this brochure are indicative only may change at any time up to the final "as built" status in accordance with the final designs of the project, regulatory approvals and planning permissions

TWO BEDROOM
FLOOR: 5, 11



2 BR TYPE 06

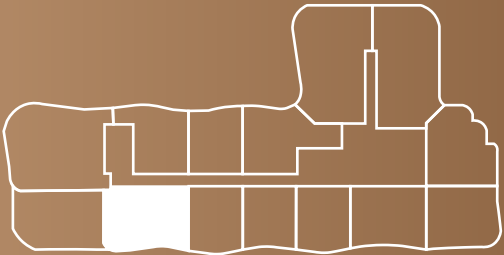
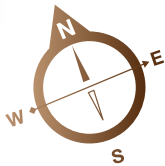
SUITE AREA	1,000.50 sq. ft
BALCONY AREA	254.78 sq. ft
TOTAL SELLABLE AREA	1,255.29 sq. ft

Disclaimer: all pictures, plans, layouts, information, data and details included in this brochure are indicative only may change at any time up to the final "as built" status in accordance with the final designs of the project, regulatory approvals and planning permissions

TWO BEDROOM

FLOOR: 5, 6, 11, 12

A1LA
RESIDENCE



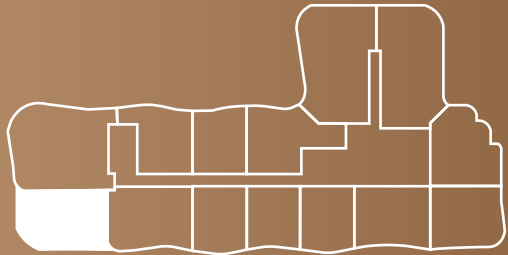
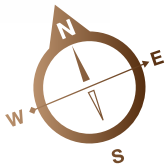
2 BR TYPE 07

SUITE AREA	1,017.73 sq. ft
BALCONY AREA	241.11 sq. ft
TOTAL SELLABLE AREA	1,258.84 sq. ft

Disclaimer: all pictures, plans, layouts, information, data and details included in this brochure are indicative only may change at any time up to the final "as built" status in accordance with the final designs of the project, regulatory approvals and planning permissions

TWO BEDROOM

FLOOR: 5, 6, 7, 11, 12

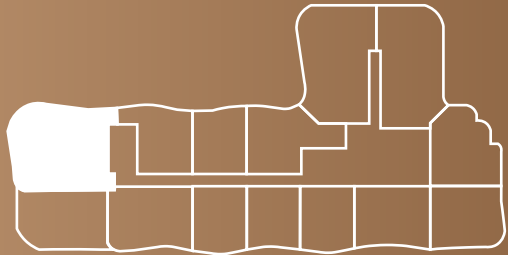
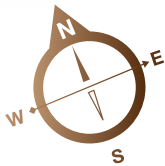


2 BR TYPE 08

SUITE AREA	1,083.17 sq. ft
BALCONY AREA	359.94 sq. ft
TOTAL SELLABLE AREA	1,443.12 sq. ft

Disclaimer: all pictures, plans, layouts, information, data and details included in this brochure are indicative only may change at any time up to the final "as built" status in accordance with the final designs of the project, regulatory approvals and planning permissions

TWO BEDROOM
FLOOR: 5, 6, 7, 11, 12



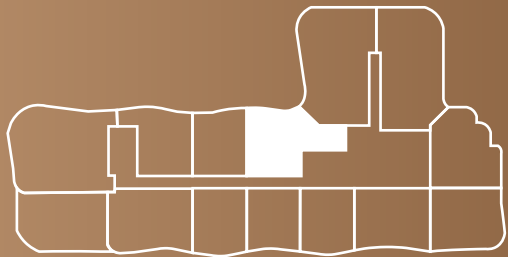
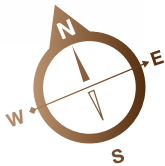
2 BR TYPE 09

SUITE AREA	1,205.77 sq. ft
BALCONY AREA	544.98 sq. ft
TOTAL SELLABLE AREA	1,750.75 sq. ft

Disclaimer: all pictures, plans, layouts, information, data and details included in this brochure are indicative only may change at any time up to the final "as built" status in accordance with the final designs of the project, regulatory approvals and planning permissions

TWO BEDROOM

FLOOR: 5, 6, 7, 8, 10, 11, 12, 13, 14, 15

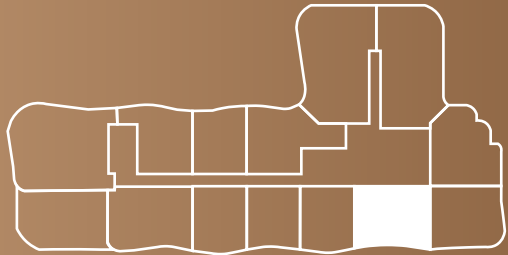
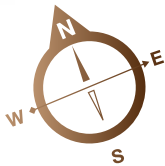


2 BR TYPE 10

SUITE AREA	947.44	sq. ft
BALCONY AREA	260.16	sq. ft
TOTAL SELLABLE AREA	1,207.60	sq. ft

Disclaimer: all pictures, plans, layouts, information, data and details included in this brochure are indicative only may change at any time up to the final "as built" status in accordance with the final designs of the project, regulatory approvals and planning permissions

TWO BEDROOM
FLOOR: 6, 7, 12, 13

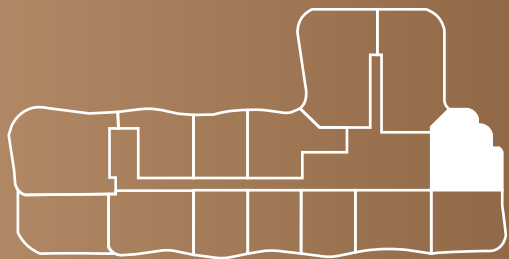
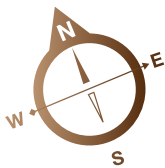


2 BR TYPE 11

SUITE AREA	1,000.50 sq. ft
BALCONY AREA	256.40 sq. ft
TOTAL SELLABLE AREA	1,256.90 sq. ft

Disclaimer: all pictures, plans, layouts, information, data and details included in this brochure are indicative only may change at any time up to the final "as built" status in accordance with the final designs of the project, regulatory approvals and planning permissions

TWO BEDROOM
FLOOR: 7, 13

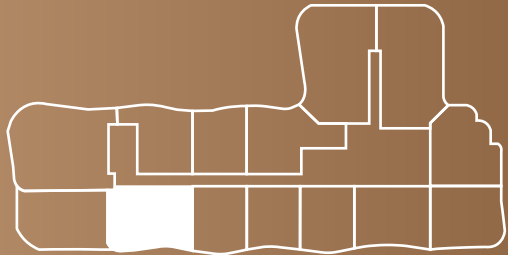
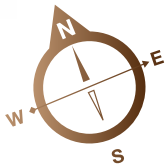


2 BR TYPE 12

SUITE AREA	910.30	sq. ft
BALCONY AREA	274.48	sq. ft
TOTAL SELLABLE AREA	1,184.78	sq. ft

Disclaimer: all pictures, plans, layouts, information, data and details included in this brochure are indicative only may change at any time up to the final "as built" status in accordance with the final designs of the project, regulatory approvals and planning permissions

TWO BEDROOM
FLOOR: 7

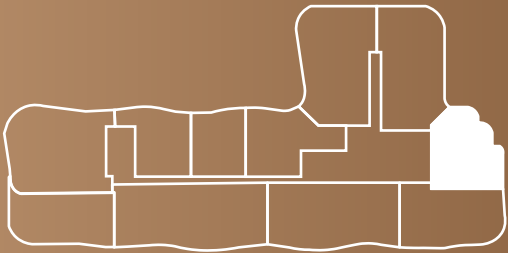
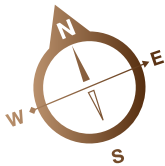


2 BR TYPE 13

SUITE AREA	1,017.83 sq. ft
BALCONY AREA	241.11 sq. ft
TOTAL SELLABLE AREA	1,258.95 sq. ft

Disclaimer: all pictures, plans, layouts, information, data and details included in this brochure are indicative only may change at any time up to the final "as built" status in accordance with the final designs of the project, regulatory approvals and planning permissions

TWO BEDROOM
FLOOR: 8

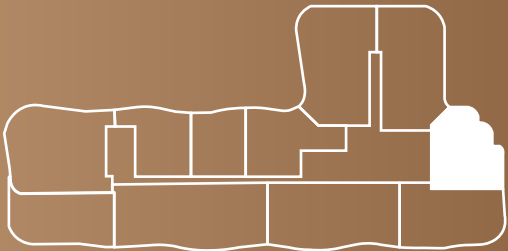
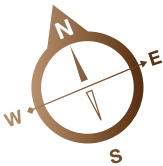


2 BR TYPE 14

SUITE AREA	919.56	sq. ft
BALCONY AREA	259.30	sq. ft
TOTAL SELLABLE AREA	1,178.86	sq. ft

Disclaimer: all pictures, plans, layouts, information, data and details included in this brochure are indicative only may change at any time up to the final "as built" status in accordance with the final designs of the project, regulatory approvals and planning permissions

TWO BEDROOM
FLOOR: 9

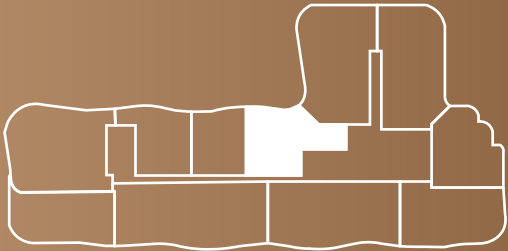
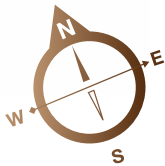


2 BR TYPE 15

SUITE AREA	917.84	sq. ft
BALCONY AREA	263.39	sq. ft
TOTAL SELLABLE AREA	1,181.23	sq. ft

Disclaimer: all pictures, plans, layouts, information, data and details included in this brochure are indicative only may change at any time up to the final "as built" status in accordance with the final designs of the project, regulatory approvals and planning permissions

TWO BEDROOM
FLOOR: 9



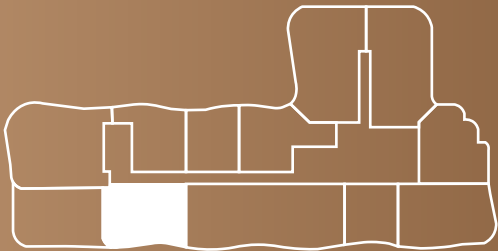
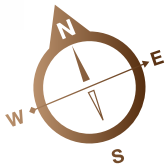
2 BR TYPE 16

SUITE AREA	947.44	sq. ft
BALCONY AREA	264.15	sq. ft
TOTAL SELLABLE AREA	1,211.59	sq. ft

Disclaimer: all pictures, plans, layouts, information, data and details included in this brochure are indicative only may change at any time up to the final "as built" status in accordance with the final designs of the project, regulatory approvals and planning permissions

TWO BEDROOM
FLOOR: 10

A1LA
RESIDENCE



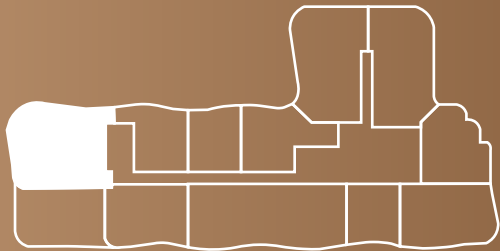
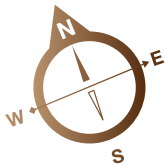
2 BR TYPE 17

SUITE AREA	984.25	sq. ft
BALCONY AREA	252.52	sq. ft
TOTAL SELLABLE AREA	1,236.77	sq. ft

Disclaimer: all pictures, plans, layouts, information, data and details included in this brochure are indicative only may change at any time up to the final "as built" status in accordance with the final designs of the project, regulatory approvals and planning permissions

TWO BEDROOM
FLOOR: 10

A1LA
RESIDENCE

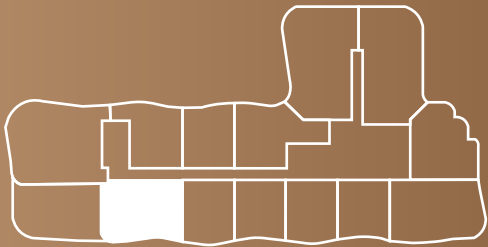
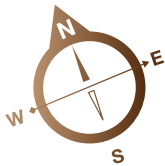


2 BR TYPE 18

SUITE AREA	1,302.32 sq. ft
BALCONY AREA	557.35 sq. ft
TOTAL SELLABLE AREA	1,859.68 sq. ft

Disclaimer: all pictures, plans, layouts, information, data and details included in this brochure are indicative only may change at any time up to the final "as built" status in accordance with the final designs of the project, regulatory approvals and planning permissions

TWO BEDROOM
FLOOR: 13



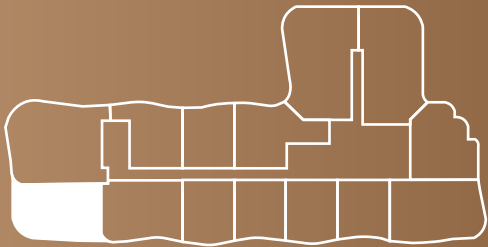
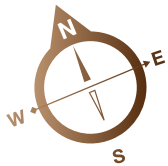
2 BR TYPE 19

SUITE AREA	1,018.48 sq. ft
BALCONY AREA	241.11 sq. ft
TOTAL SELLABLE AREA	1,259.59 sq. ft

Disclaimer: all pictures, plans, layouts, information, data and details included in this brochure are indicative only may change at any time up to the final "as built" status in accordance with the final designs of the project, regulatory approvals and planning permissions

TWO BEDROOM
FLOOR: 13

A1LA
RESIDENCE



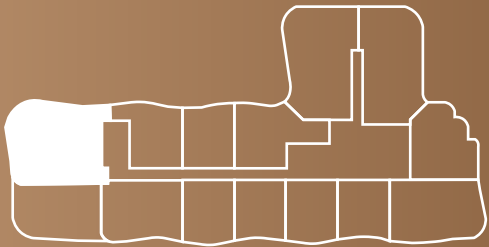
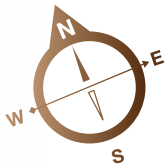
2 BR TYPE 20

SUITE AREA	1,083.06 sq. ft
BALCONY AREA	359.73 sq. ft
TOTAL SELLABLE AREA	1,442.79 sq. ft

Disclaimer: all pictures, plans, layouts, information, data and details included in this brochure are indicative only may change at any time up to the final "as built" status in accordance with the final designs of the project, regulatory approvals and planning permissions

TWO BEDROOM
FLOOR: 13

A1LA
RESIDENCE

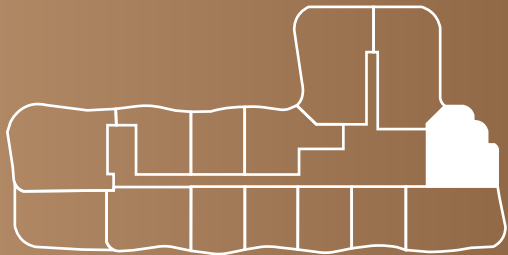
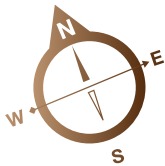


2 BR TYPE 21

SUITE AREA	1,205.77 sq. ft
BALCONY AREA	545.19 sq. ft
TOTAL SELLABLE AREA	1,750.97 sq. ft

Disclaimer: all pictures, plans, layouts, information, data and details included in this brochure are indicative only may change at any time up to the final "as built" status in accordance with the final designs of the project, regulatory approvals and planning permissions

TWO BEDROOM
FLOOR: 14

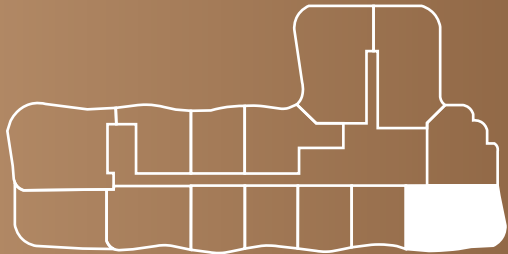
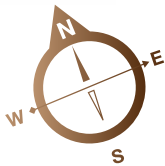


2 BR TYPE 22

SUITE AREA	919.56	sq. ft
BALCONY AREA	245.96	sq. ft
TOTAL SELLABLE AREA	1,165.52	sq. ft

Disclaimer: all pictures, plans, layouts, information, data and details included in this brochure are indicative only may change at any time up to the final "as built" status in accordance with the final designs of the project, regulatory approvals and planning permissions

TWO BEDROOM
FLOOR: 14

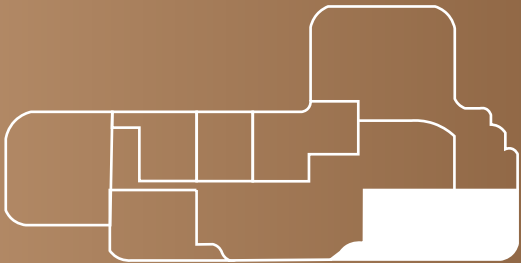
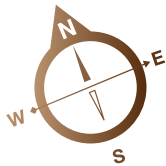


2 BR TYPE 23

SUITE AREA	999.43	sq. ft
BALCONY AREA	497.51	sq. ft
TOTAL SELLABLE AREA	1,496.94	sq. ft

Disclaimer: all pictures, plans, layouts, information, data and details included in this brochure are indicative only may change at any time up to the final "as built" status in accordance with the final designs of the project, regulatory approvals and planning permissions

TWO BEDROOM
FLOOR: 16

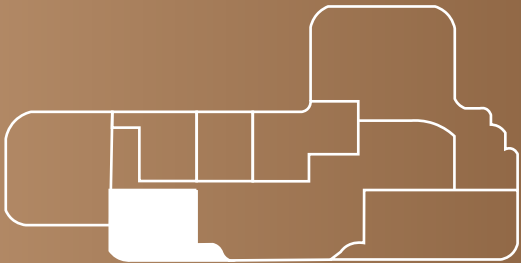
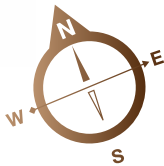


2 BR TYPE 24

SUITE AREA	1,000.50 sq. ft
BALCONY AREA	1,413.73 sq. ft
TOTAL SELLABLE AREA	2,414.24 sq. ft

Disclaimer: all pictures, plans, layouts, information, data and details included in this brochure are indicative only may change at any time up to the final "as built" status in accordance with the final designs of the project, regulatory approvals and planning permissions

TWO BEDROOM
FLOOR: 16

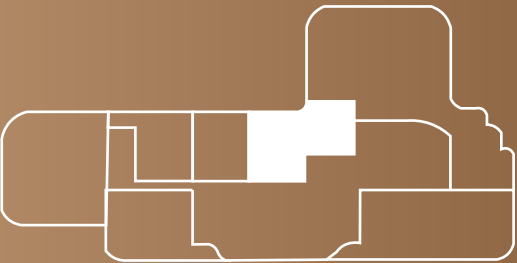
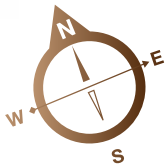


2 BR TYPE 25

SUITE AREA	1,002.23 sq. ft
BALCONY AREA	367.26 sq. ft
TOTAL SELLABLE AREA	1,369.49 sq. ft

Disclaimer: all pictures, plans, layouts, information, data and details included in this brochure are indicative only may change at any time up to the final "as built" status in accordance with the final designs of the project, regulatory approvals and planning permissions

TWO BEDROOM
FLOOR: 16



2 BR TYPE 26

SUITE AREA	947.55	sq. ft
BALCONY AREA	530.66	sq. ft
TOTAL SELLABLE AREA	1,478.21	sq. ft

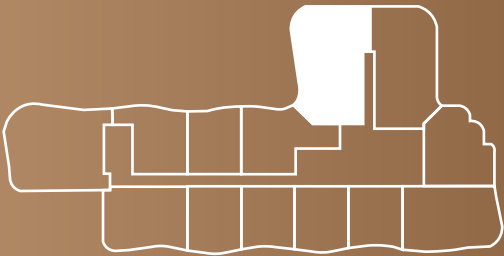
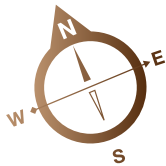
Disclaimer: all pictures, plans, layouts, information, data and details included in this brochure are indicative only may change at any time up to the final "as built" status in accordance with the final designs of the project, regulatory approvals and planning permissions

Three Bedroom



THREE BEDROOM

FLOOR: 3, 4, 10, 11, 12, 13, 14, 15



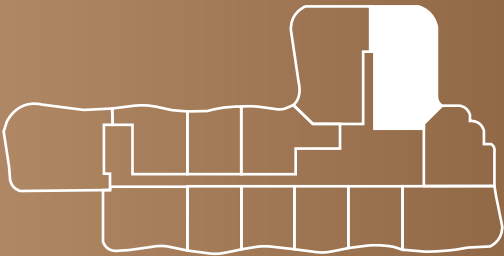
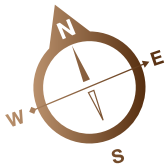
3 BR TYPE 01

SUITE AREA	1,372.29 sq. ft
BALCONY AREA	685.88 sq. ft
TOTAL SELLABLE AREA	2,058.17 sq. ft

Disclaimer: all pictures, plans, layouts, information, data and details included in this brochure are indicative only may change at any time up to the final "as built" status in accordance with the final designs of the project, regulatory approvals and planning permissions

THREE BEDROOM

FLOOR: 3, 4, 8, 9, 10, 11, 12, 13, 14

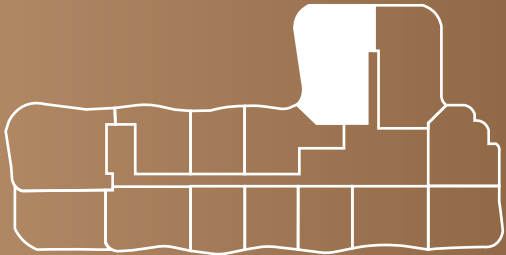
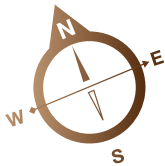


3 BR TYPE 02

SUITE AREA	1,434.07 sq. ft
BALCONY AREA	485.34 sq. ft
TOTAL SELLABLE AREA	1,919.42 sq. ft

Disclaimer: all pictures, plans, layouts, information, data and details included in this brochure are indicative only may change at any time up to the final "as built" status in accordance with the final designs of the project, regulatory approvals and planning permissions

THREE BEDROOM
FLOOR: 5, 6, 7, 9

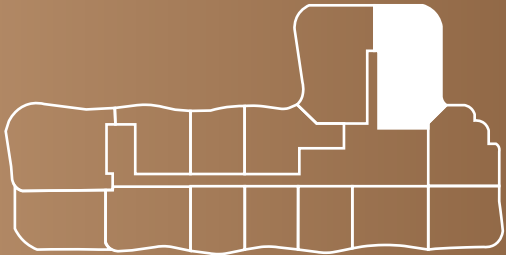
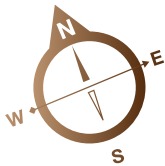


3 BR TYPE 03

SUITE AREA	1,372.29 sq. ft
BALCONY AREA	683.40 sq. ft
TOTAL SELLABLE AREA	2,055.69 sq. ft

Disclaimer: all pictures, plans, layouts, information, data and details included in this brochure are indicative only may change at any time up to the final "as built" status in accordance with the final designs of the project, regulatory approvals and planning permissions

THREE BEDROOM
FLOOR: 5, 6, 7, 9

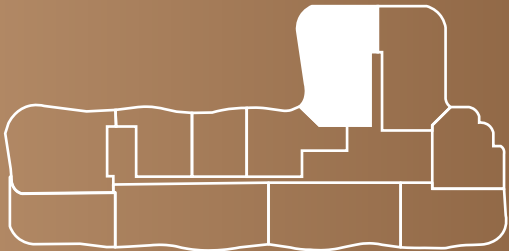
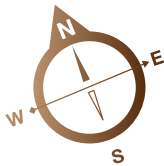


3 BR TYPE 04

SUITE AREA	1,434.07 sq. ft
BALCONY AREA	487.82 sq. ft
TOTAL SELLABLE AREA	1,921.90 sq. ft

Disclaimer: all pictures, plans, layouts, information, data and details included in this brochure are indicative only may change at any time up to the final "as built" status in accordance with the final designs of the project, regulatory approvals and planning permissions

THREE BEDROOM
FLOOR: 8



3 BR TYPE 05

SUITE AREA	1,372.40 sq. ft
BALCONY AREA	685.88 sq. ft
TOTAL SELLABLE AREA	2,058.27 sq. ft

Disclaimer: all pictures, plans, layouts, information, data and details included in this brochure are indicative only may change at any time up to the final "as built" status in accordance with the final designs of the project, regulatory approvals and planning permissions





Object 1