



# Zephyra

RESIDENCES

1 BEDROOM_10	m <sup>2</sup>	ft <sup>2</sup>
SUITE AREA	67,34	724,84
BALCONY AREA	16,79	180,73
TOTAL AREA	84,13	905,57

## 1 FLOOR



## WINDOW VIEW

MALL / MOSQUE / PARK / AVENUE  
PERSIAN GULF / CRUISE TERMINAL






# Zephyra

RESIDENCES

1 BEDROOM_13	m <sup>2</sup>	ft <sup>2</sup>
SUITE AREA	69,90	752,40
BALCONY AREA	11,70	125,94
TOTAL AREA	81,60	878,33

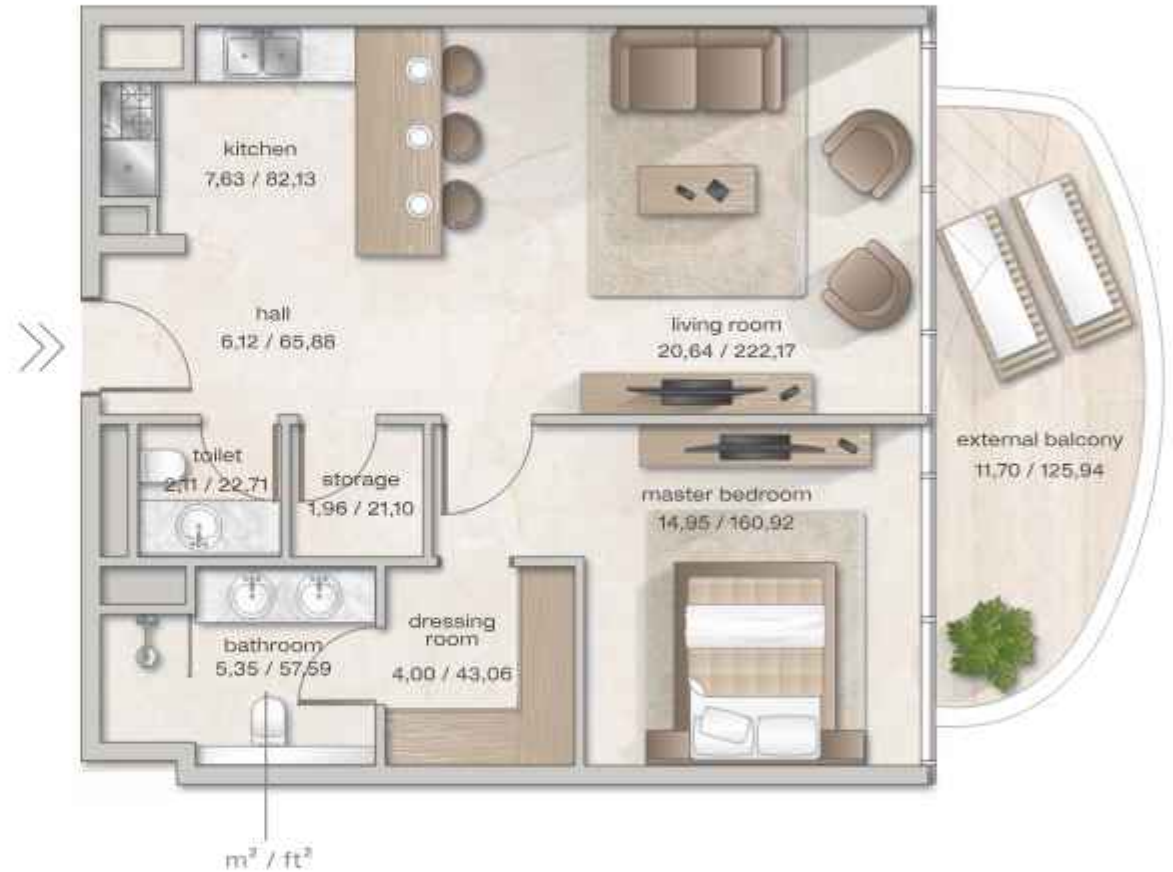
## 1 FLOOR



 covered balcony

## WINDOW VIEW

PARK / PERSIAN GULF /  
DUBAI ISLAND BEACH / DIERA MALL /  
SOUK AL MARFA / NIGHT SOUK






1 BEDROOM_14	m <sup>2</sup>	ft <sup>2</sup>
SUITE AREA	71,64	771,13
BALCONY AREA	11,17	120,23
TOTAL AREA	82,81	891,36

## 1 FLOOR



 covered balcony

## WINDOW VIEW

PARK / PERSIAN GULF /  
DUBAI ISLAND BEACH / DIERA MALL /  
SOUK AL MARFA / NIGHT SOUK






1 BEDROOM_17	m <sup>2</sup>	ft <sup>2</sup>
SUITE AREA	70,71	761,12
BALCONY AREA	19,73	212,37
TOTAL AREA	90,44	973,49

## 1 FLOOR



 covered balcony

## WINDOW VIEW

JUMEIRAH MOSQUE / DUBAI FRAME /  
SOUK AL MARFA / NIGHT SOUK







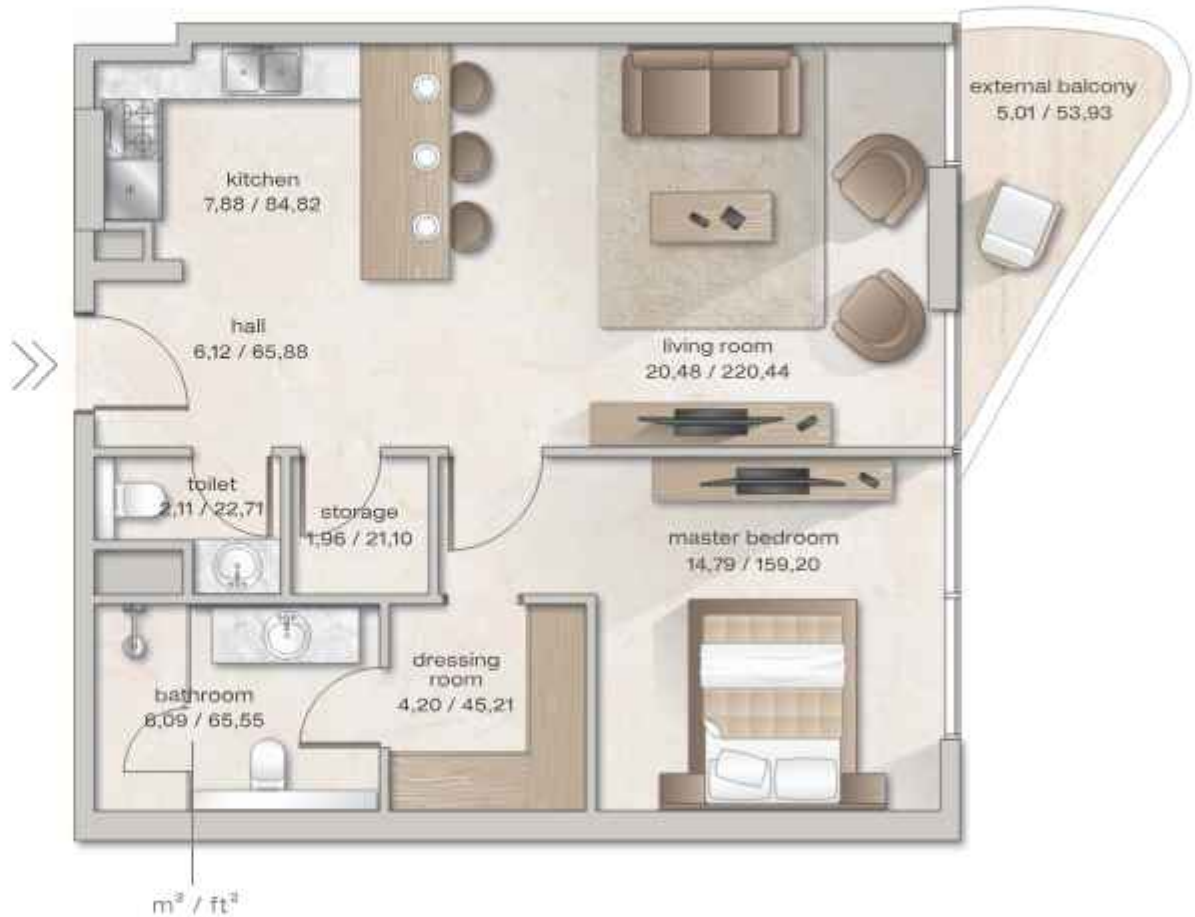
# Zephyra

RESIDENCES



1 BEDROOM_20	m <sup>2</sup>	ft <sup>2</sup>
SUITE AREA	70,67	760,68
BALCONY AREA	5,01	53,93
TOTAL AREA	75,68	814,61

## 1 FLOOR



WINDOW VIEW  
MALL / MOSQUE / PARK / AVENUE /  
PERSIAN GULF



1 BEDROOM_21	m <sup>2</sup>	ft <sup>2</sup>
SUITE AREA	66,04	710,85
TOTAL AREA	66,04	710,85

## 2 FLOOR



m<sup>2</sup> — 4,49 / 48,33 — ft<sup>2</sup>

## WINDOW VIEW

MALL / MOSQUE / PARK / AVENUE  
PERSIAN GULF / CRUISE TERMINAL





<b>1 BEDROOM_22</b>	m <sup>2</sup>	ft <sup>2</sup>
<b>SUITE AREA</b>	66,74	718,38
<b>BALCONY AREA</b>	4,58	49,30
<b>TOTAL AREA</b>	71,32	767,68

## 2 FLOOR



 covered balcony  
 m<sup>2</sup> — 4,49 / 48,33 — ft<sup>2</sup>

## WINDOW VIEW

MALL / MOSQUE / PARK / AVENUE  
 PERSIAN GULF / CRUISE TERMINAL





1 BEDROOM_23	m <sup>2</sup>	ft <sup>2</sup>
SUITE AREA	82,31	885,98
BALCONY AREA	28,01	301,50
TOTAL AREA	110,32	1187,47

## 2 FLOOR



 covered balcony  
 m<sup>2</sup> — 4,49 / 48,33 — ft<sup>2</sup>

## WINDOW VIEW

MALL / MOSQUE / PARK / AVENUE  
 PERSIAN GULF / CRUISE TERMINAL







1 BEDROOM_26	m <sup>2</sup>	ft <sup>2</sup>
SUITE AREA	68,69	739,37
BALCONY AREA	3,01	32,40
TOTAL AREA	71,70	771,77

## 2 FLOOR



 covered balcony  
 m<sup>2</sup> — 4,49 / 48,33 — ft<sup>2</sup>

## WINDOW VIEW

PARK / PERSIAN GULF /  
 DUBAI ISLAND BEACH / DIERA MALL /  
 SOUK AL MARFA / NIGHT SOUK





1 BEDROOM_27	m <sup>2</sup>	ft <sup>2</sup>
SUITE AREA	70,40	757,78
BALCONY AREA	4,37	47,04
TOTAL AREA	74,77	804,82

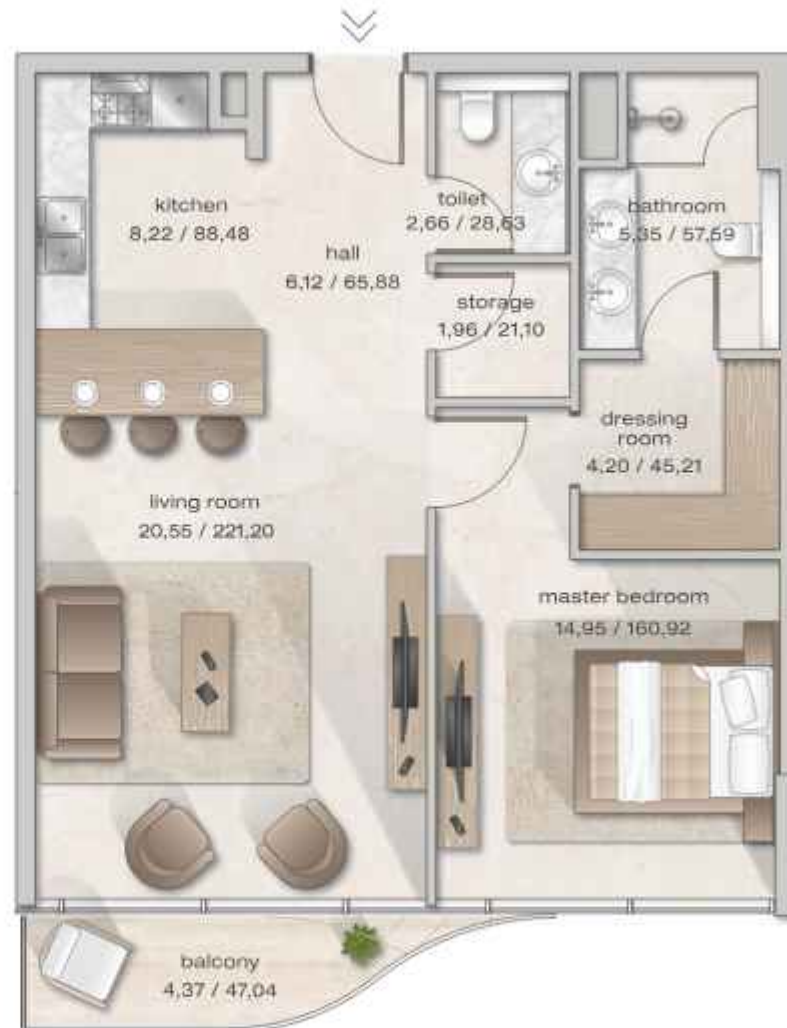
## 2 FLOOR



 covered balcony  
 m<sup>2</sup> — 4,49 / 48,33 — ft<sup>2</sup>

## WINDOW VIEW

PARK / PERSIAN GULF /  
 DUBAI ISLAND BEACH / DIERA MALL /  
 SOUK AL MARFA / NIGHT SOUK





1 BEDROOM_30	m <sup>2</sup>	ft <sup>2</sup>
SUITE AREA	70,48	758,64
BALCONY AREA	5,16	55,54
TOTAL AREA	75,64	814,18

## 2 FLOOR



 covered balcony  
 m<sup>2</sup> — 4,49 / 48,33 — ft<sup>2</sup>

## WINDOW VIEW

JUMEIRAH MOSQUE / DUBAI FRAME /  
 SOUK AL MARFA / NIGHT SOUK





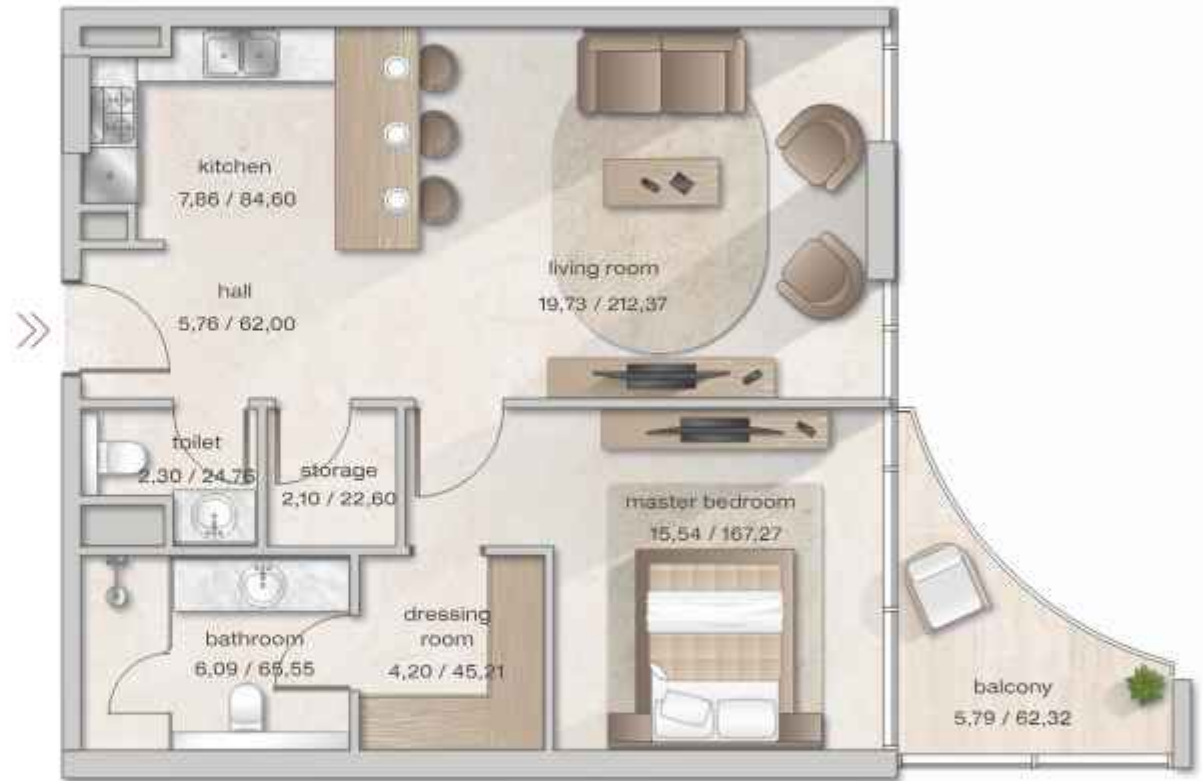
<b>1 BEDROOM_33</b>	m <sup>2</sup>	ft <sup>2</sup>
SUITE AREA	70,46	758,42
BALCONY AREA	5,79	62,32
<b>TOTAL AREA</b>	<b>76,25</b>	<b>820,75</b>

## 2 FLOOR



 covered balcony  
 m<sup>2</sup> — 4,49 / 48,33 — ft<sup>2</sup>

WINDOW VIEW  
 MALL / MOSQUE / PARK / AVENUE /  
 PERSIAN GULF





# Zephyra

RESIDENCES



1 BEDROOM_34	m <sup>2</sup>	ft <sup>2</sup>
SUITE AREA	66,52	716,01
BALCONY AREA	4,96	53,39
TOTAL AREA	71,48	769,40

## 3 FLOOR



m<sup>2</sup> — 4,49 / 48,33 — ft<sup>2</sup>

## WINDOW VIEW

MALL / MOSQUE / PARK / AVENUE  
PERSIAN GULF / CRUISE TERMINAL







<b>1 BEDROOM_35</b>	m <sup>2</sup>	ft <sup>2</sup>
<b>SUITE AREA</b>	66,54	716,23
<b>BALCONY AREA</b>	4,30	46,28
<b>TOTAL AREA</b>	70,84	762,51

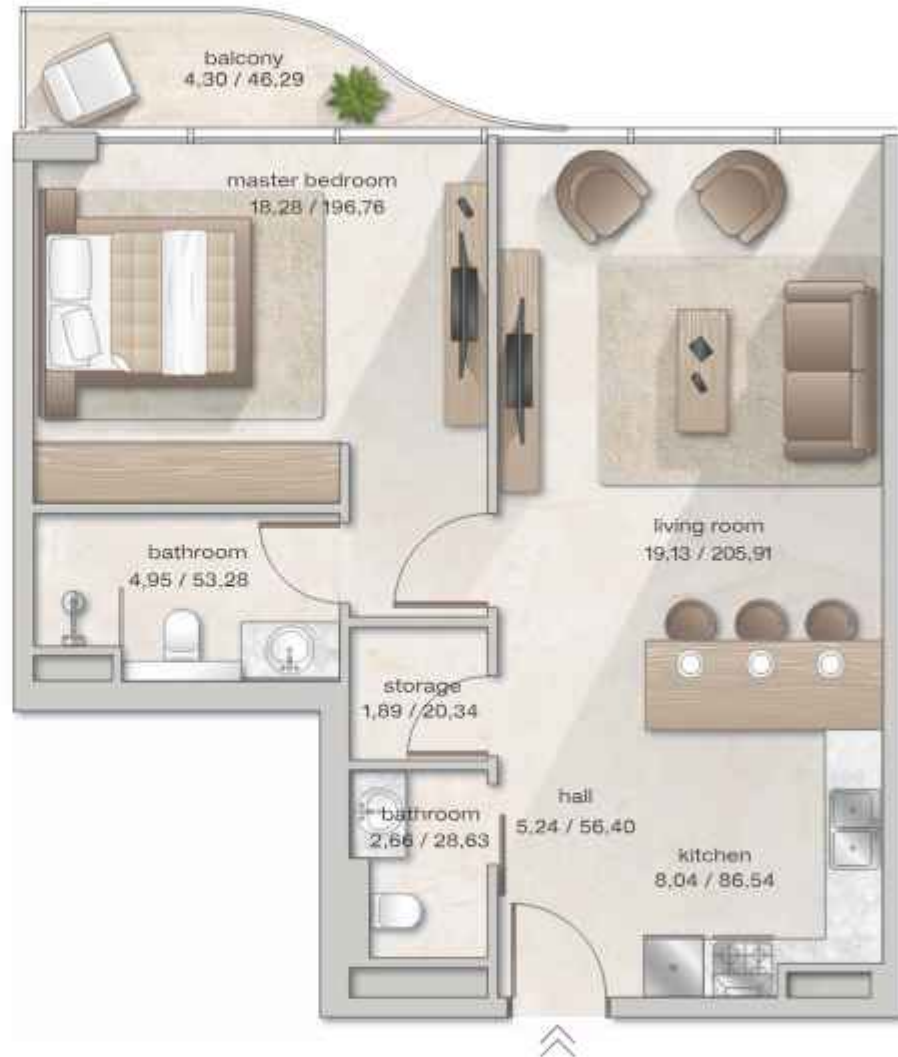
### 3 FLOOR



 covered balcony  
 m<sup>2</sup> — 4,49 / 48,33 — ft<sup>2</sup>

### WINDOW VIEW

MALL / MOSQUE / PARK / AVENUE  
 PERSIAN GULF / CRUISE TERMINAL





<b>1 BEDROOM_36</b>	m <sup>2</sup>	ft <sup>2</sup>
SUITE AREA	62,13	668,76
BALCONY AREA	25,57	275,23
<b>TOTAL AREA</b>	<b>87,70</b>	<b>943,99</b>

### 3 FLOOR



 covered balcony  
 m<sup>2</sup> — 4,49 / 48,33 — ft<sup>2</sup>

### WINDOW VIEW

MALL / MOSQUE / PARK / AVENUE  
 PERSIAN GULF / CRUISE TERMINAL





1 BEDROOM_38	m <sup>2</sup>	ft <sup>2</sup>
SUITE AREA	68,59	738,30
BALCONY AREA	3,40	36,60
TOTAL AREA	71,99	774,89

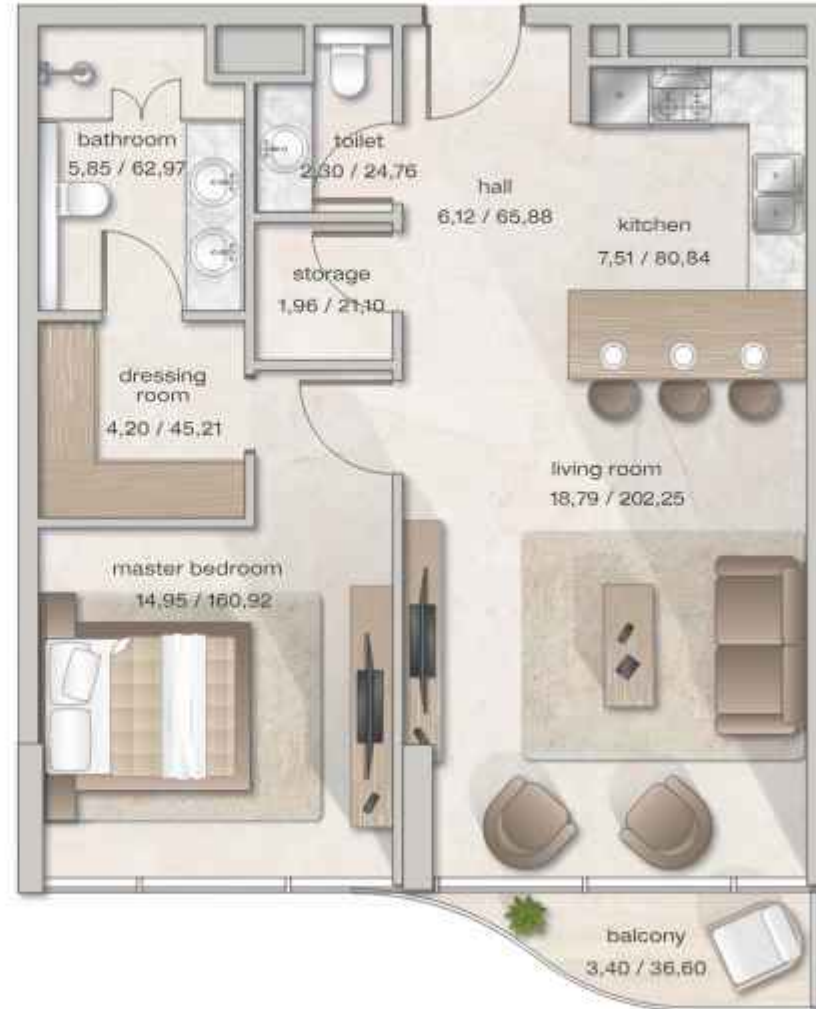
### 3 FLOOR



m<sup>2</sup> — 4,49 / 48,33 — ft<sup>2</sup>

### WINDOW VIEW

PARK / PERSIAN GULF /  
DUBAI ISLAND BEACH / DIERA MALL /  
SOUK AL MARFA / NIGHT SOUK





1 BEDROOM_39	m <sup>2</sup>	ft <sup>2</sup>
SUITE AREA	69,30	745,94
BALCONY AREA	5,48	58,99
TOTAL AREA	74,78	804,92

### 3 FLOOR



 covered balcony  
 m<sup>2</sup> — 4,49 / 48,33 — ft<sup>2</sup>

### WINDOW VIEW

PARK / PERSIAN GULF /  
 DUBAI ISLAND BEACH / DIERA MALL /  
 SOUK AL MARFA / NIGHT SOUK





1 BEDROOM_40	m <sup>2</sup>	ft <sup>2</sup>
SUITE AREA	70,49	758,75
BALCONY AREA	4,29	46,18
TOTAL AREA	74,78	804,92

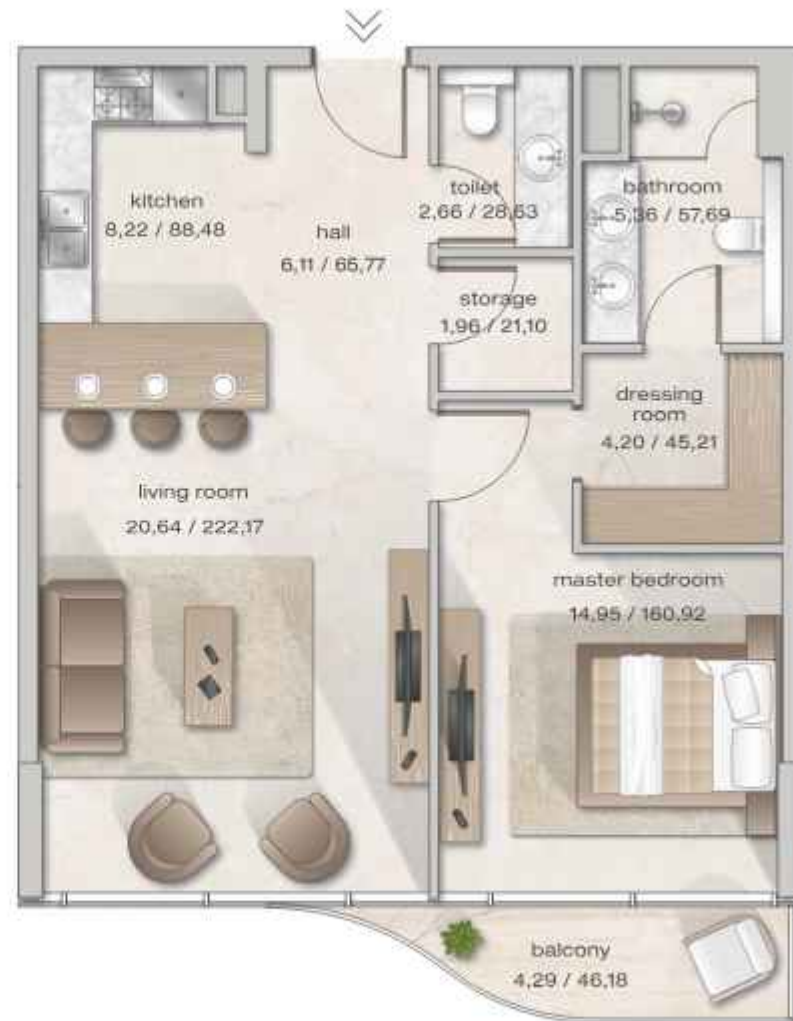
### 3 FLOOR



 covered balcony  
 m<sup>2</sup> — 4,49 / 48,33 — ft<sup>2</sup>

### WINDOW VIEW

PARK / PERSIAN GULF /  
 DUBAI ISLAND BEACH / DIERA MALL /  
 SOUK AL MARFA / NIGHT SOUK







1 BEDROOM_42	m <sup>2</sup>	ft <sup>2</sup>
SUITE AREA	69,53	748,41
BALCONY AREA	3,21	34,55
TOTAL AREA	72,74	782,97

### 3 FLOOR



 covered balcony  
 m<sup>2</sup> 4,49 / 48,33 ft<sup>2</sup>

### WINDOW VIEW

JUMEIRAH MOSQUE / DUBAI FRAME /  
 SOUK AL MARFA / NIGHT SOUK





1 BEDROOM_43	m <sup>2</sup>	ft <sup>2</sup>
SUITE AREA	70,36	757,35
BALCONY AREA	11,75	126,48
TOTAL AREA	82,11	883,82

### 3 FLOOR



 covered balcony  
 m<sup>2</sup> — 4,49 / 48,33 — ft<sup>2</sup>

### WINDOW VIEW

JUMEIRAH MOSQUE / DUBAI FRAME /  
 SOUK AL MARFA / NIGHT SOUK





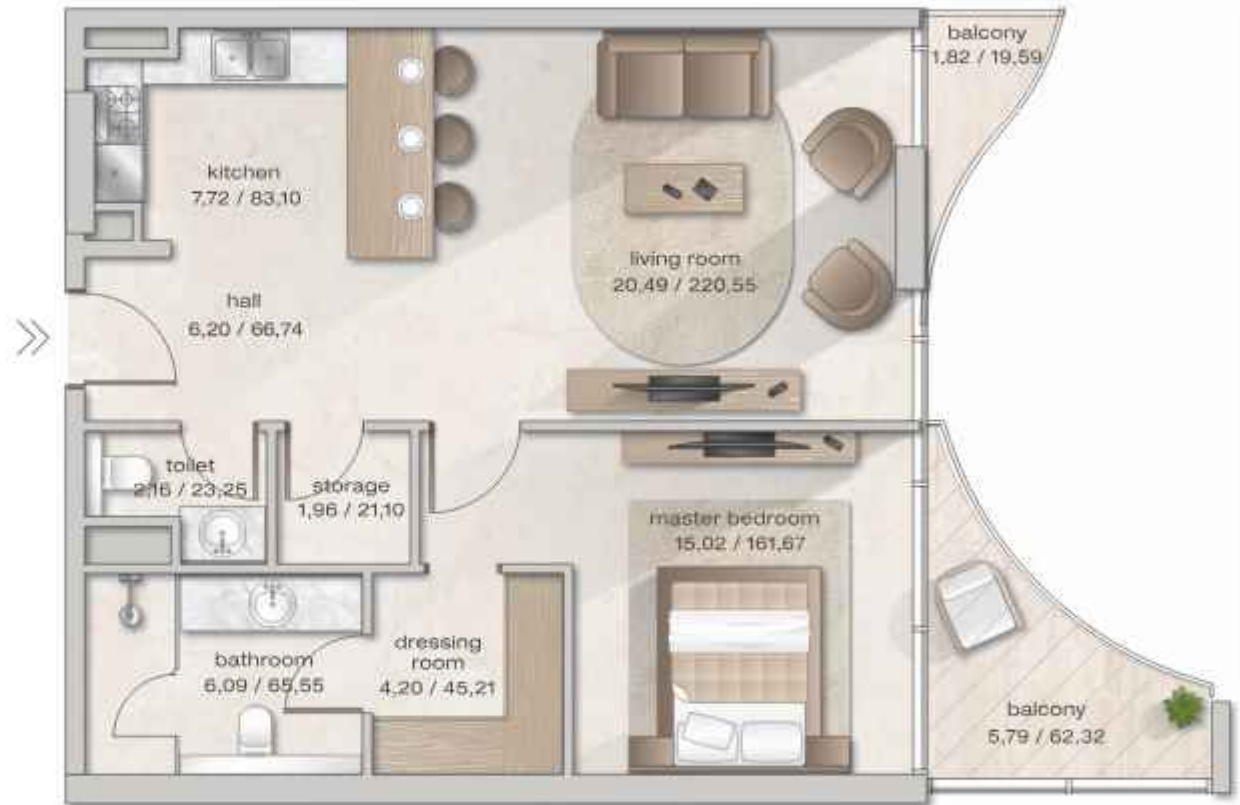
<b>1 BEDROOM_46</b>	m <sup>2</sup>	ft <sup>2</sup>
<b>SUITE AREA</b>	70,86	762,73
<b>BALCONY AREA</b>	7,61	81,91
<b>TOTAL AREA</b>	78,47	844,64

### 3 FLOOR



 covered balcony  
 m<sup>2</sup> — 4,49 / 48,33 — ft<sup>2</sup>

**WINDOW VIEW**  
 MALL / MOSQUE / PARK / AVENUE /  
 PERSIAN GULF





1 BEDROOM_47	m <sup>2</sup>	ft <sup>2</sup>
SUITE AREA	66,04	710,85
TOTAL AREA	66,04	710,85

4 FLOOR



m<sup>2</sup> — 4,49 / 48,33 — ft<sup>2</sup>

WINDOW VIEW

MALL / MOSQUE / PARK / AVENUE  
PERSIAN GULF / CRUISE TERMINAL





1 BEDROOM_50	m <sup>2</sup>	ft <sup>2</sup>
SUITE AREA	69,53	748,41
BALCONY AREA	3,01	32,40
TOTAL AREA	72,54	780,81

## 4 FLOOR



 covered balcony  
 m<sup>2</sup> — 4,49 / 48,33 — ft<sup>2</sup>

## WINDOW VIEW

PARK / PERSIAN GULF /  
 DUBAI ISLAND BEACH / DIERA MALL /  
 SOUK AL MARFA / NIGHT SOUK







1 BEDROOM_51	m <sup>2</sup>	ft <sup>2</sup>
SUITE AREA	70,18	755,41
BALCONY AREA	4,37	47,04
TOTAL AREA	74,55	802,45

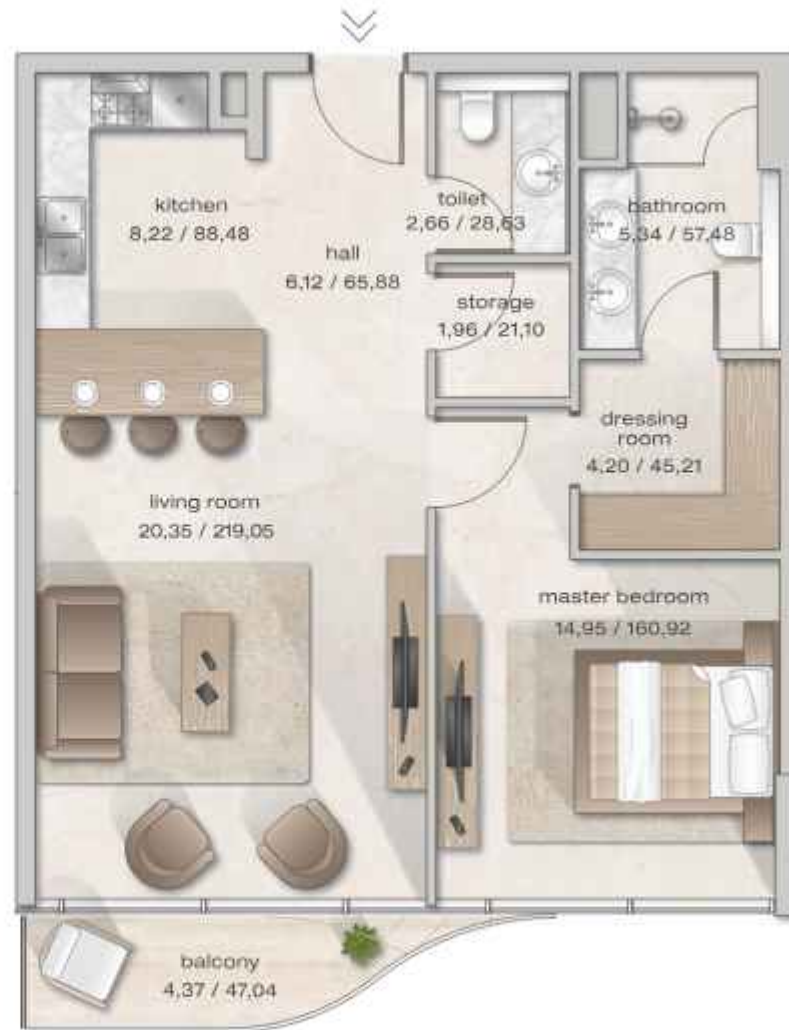
## 4 FLOOR



 covered balcony  
 m<sup>2</sup> — 4,49 / 48,33 — ft<sup>2</sup>

## WINDOW VIEW

PARK / PERSIAN GULF /  
 DUBAI ISLAND BEACH / DIERA MALL /  
 SOUK AL MARFA / NIGHT SOUK





<b>1 BEDROOM_53</b>	m <sup>2</sup>	ft <sup>2</sup>
<b>SUITE AREA</b>	69,73	750,57
<b>BALCONY AREA</b>	8,91	95,91
<b>TOTAL AREA</b>	78,64	846,47

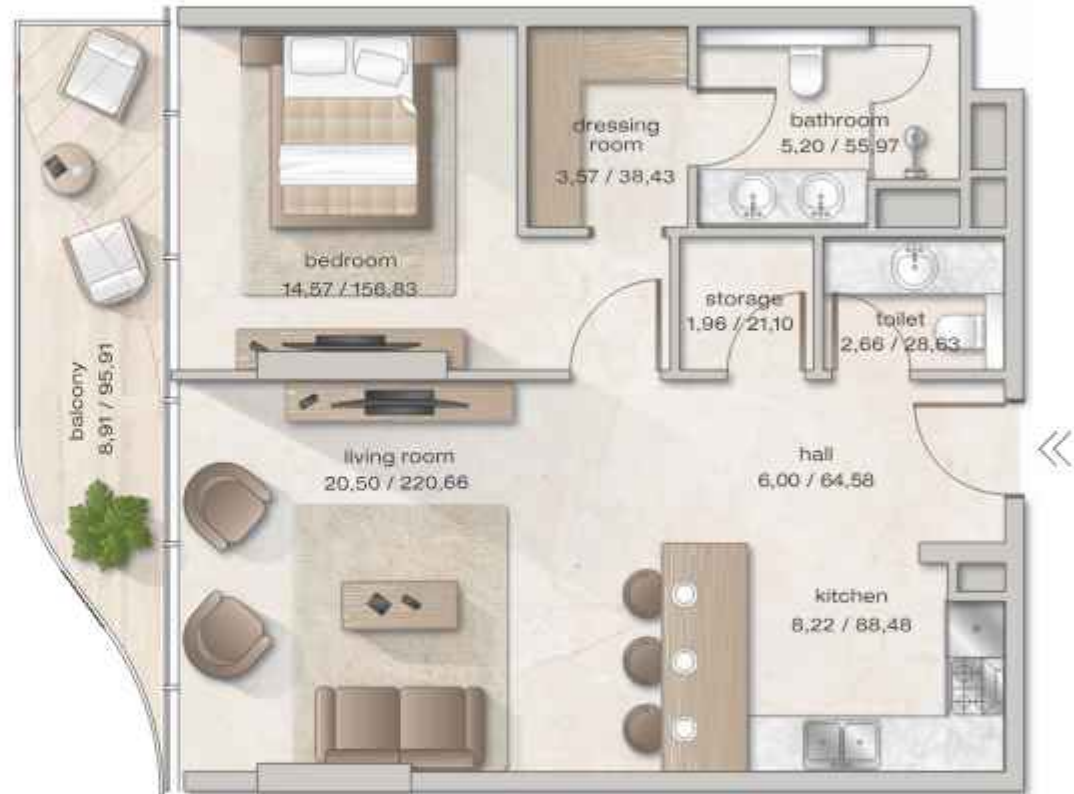
## 4 FLOOR



 covered balcony  
 m<sup>2</sup> — 4,49 / 48,33 — ft<sup>2</sup>

## WINDOW VIEW

JUMEIRAH MOSQUE / DUBAI FRAME /  
 SOUK AL MARFA / NIGHT SOUK





1 BEDROOM_54	m <sup>2</sup>	ft <sup>2</sup>
SUITE AREA	70,06	754,12
BALCONY AREA	2,27	24,43
TOTAL AREA	72,33	778,55

## 4 FLOOR



 covered balcony  
 m<sup>2</sup> — 4,49 / 48,33 — ft<sup>2</sup>

## WINDOW VIEW

JUMEIRAH MOSQUE / DUBAI FRAME /  
 SOUK AL MARFA / NIGHT SOUK





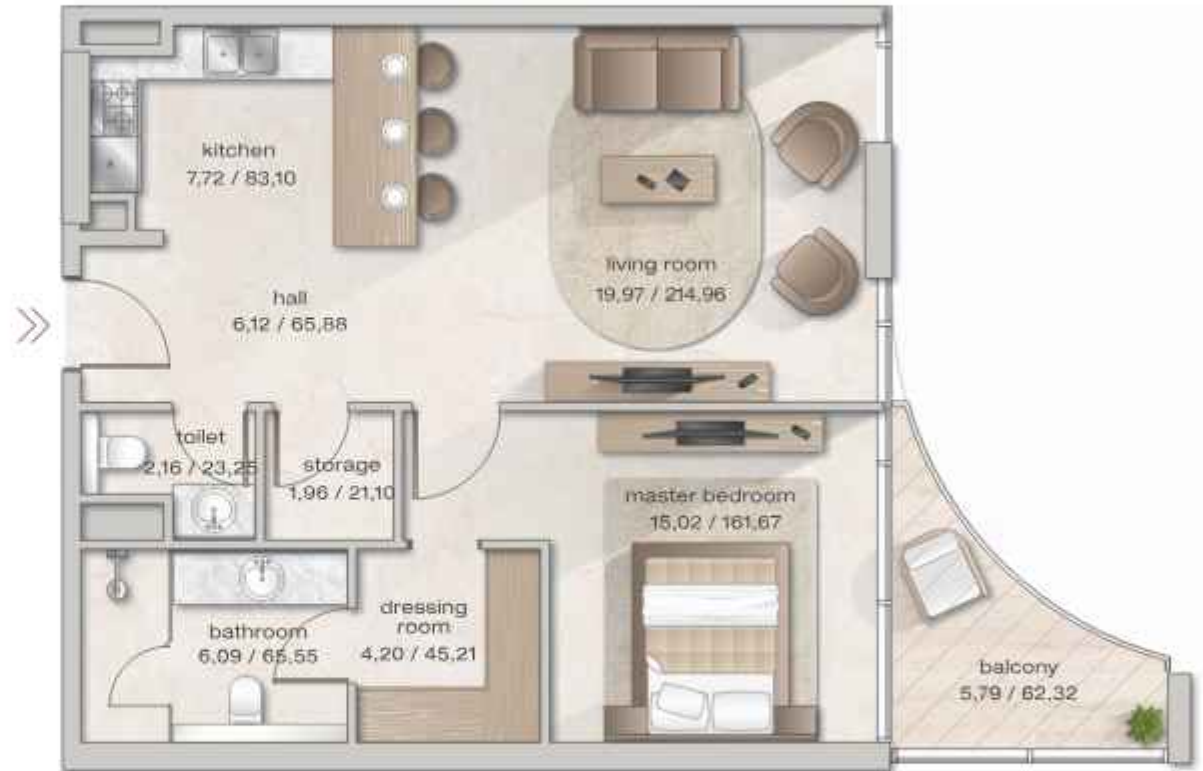
1 BEDROOM_57	m <sup>2</sup>	ft <sup>2</sup>
SUITE AREA	70,46	758,42
BALCONY AREA	5,79	62,32
TOTAL AREA	76,25	820,75

4 FLOOR



 covered balcony  
m<sup>2</sup> 4,49 / 48,33 ft<sup>2</sup>

WINDOW VIEW  
MALL / MOSQUE / PARK / AVENUE /  
PERSIAN GULF





# Zephyra

RESIDENCES



1 BEDROOM_58	m <sup>2</sup>	ft <sup>2</sup>
SUITE AREA	66,52	716,01
BALCONY AREA	4,96	53,39
TOTAL AREA	71,48	769,40

## 5 FLOOR



 covered balcony  
 m<sup>2</sup> — 4,49 / 48,33 — ft<sup>2</sup>

## WINDOW VIEW

MALL / MOSQUE / PARK / AVENUE  
 PERSIAN GULF / CRUISE TERMINAL







1 BEDROOM_61	m <sup>2</sup>	ft <sup>2</sup>
SUITE AREA	69,28	745,72
BALCONY AREA	5,48	58,99
TOTAL AREA	74,76	804,71

## 5 FLOOR



 covered balcony  
 m<sup>2</sup> — 4,49 / 48,33 — ft<sup>2</sup>

## WINDOW VIEW

PARK / PERSIAN GULF /  
 DUBAI ISLAND BEACH / DIERA MALL /  
 SOUK AL MARFA / NIGHT SOUK





1 BEDROOM_62	m <sup>2</sup>	ft <sup>2</sup>
SUITE AREA	70,46	758,42
BALCONY AREA	4,29	46,18
TOTAL AREA	74,75	804,60

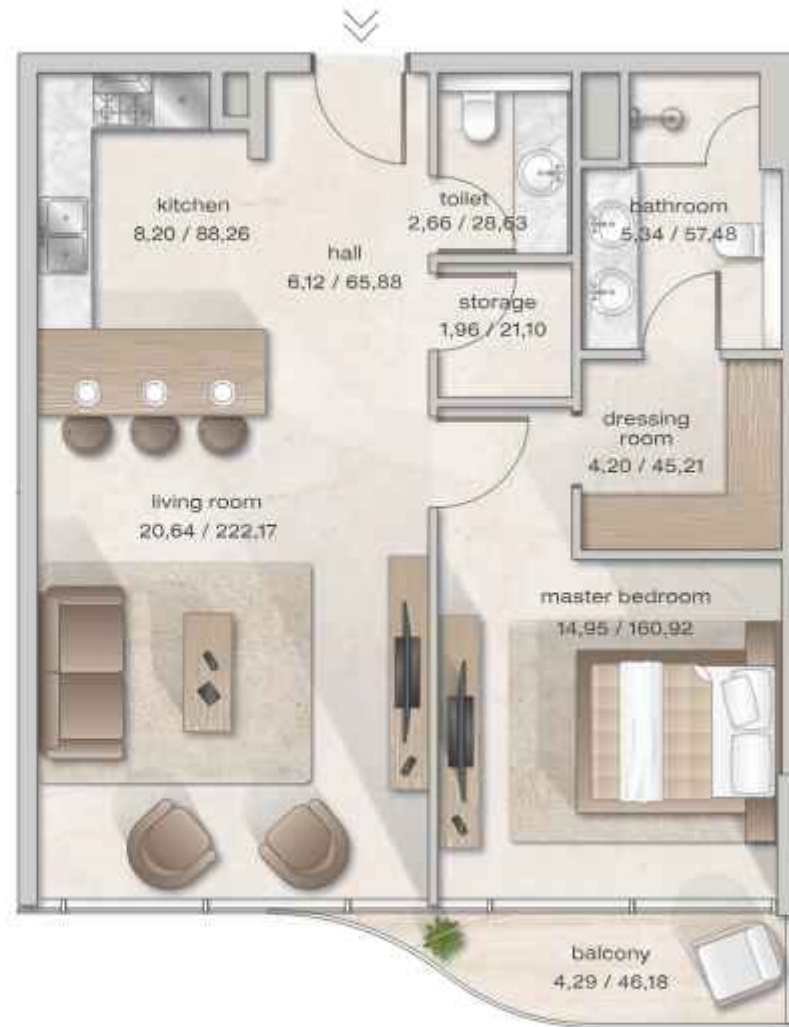
## 5 FLOOR



 covered balcony  
 m<sup>2</sup> — 4,49 / 48,33 — ft<sup>2</sup>

## WINDOW VIEW

PARK / PERSIAN GULF /  
 DUBAI ISLAND BEACH / DIERA MALL /  
 SOUK AL MARFA / NIGHT SOUK





# Zephyra

RESIDENCES

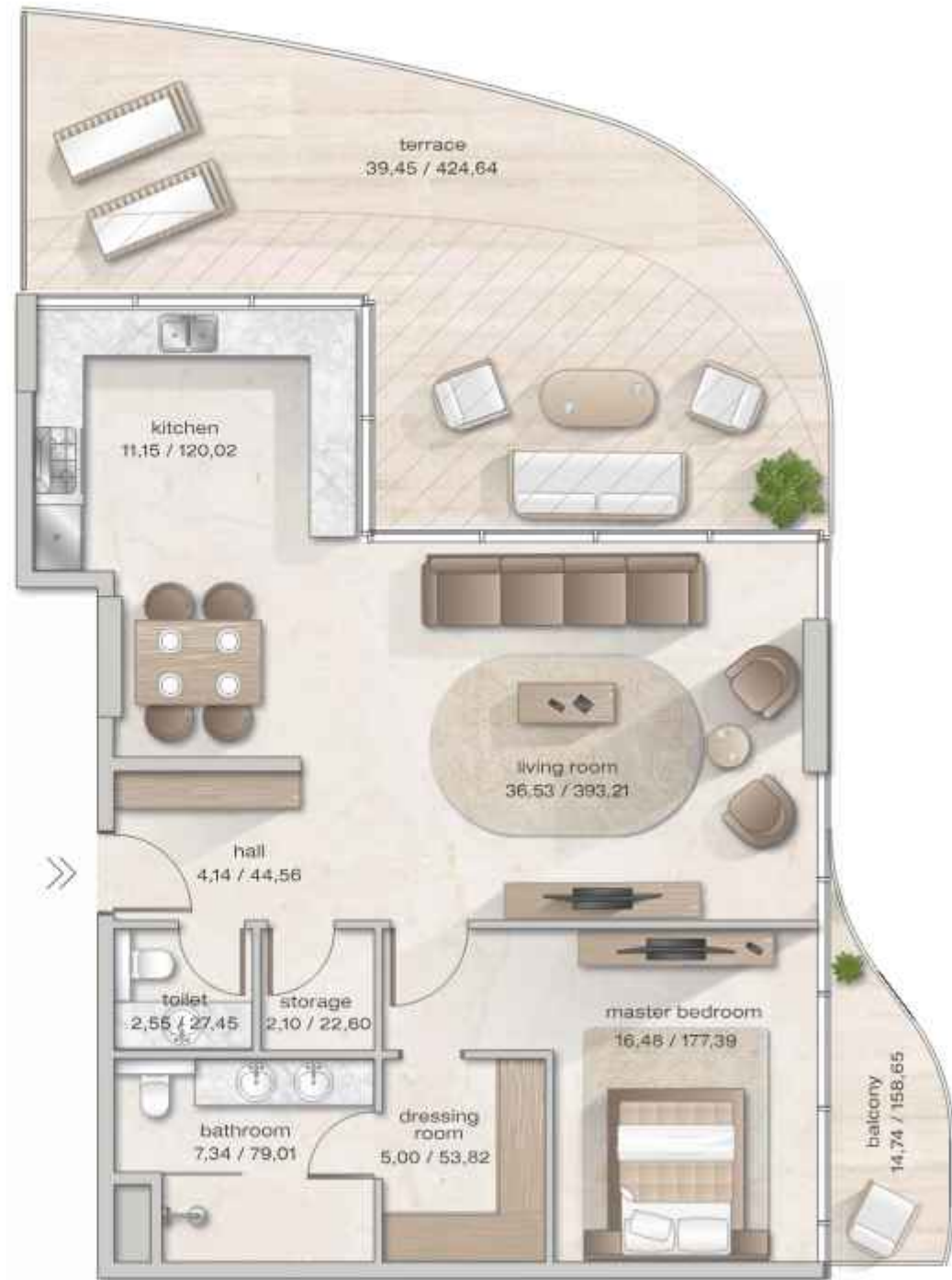
1 BEDROOM_66	m <sup>2</sup>	ft <sup>2</sup>
SUITE AREA	94,89	1021,39
BALCONY AREA	44,19	475,66
TOTAL AREA	139,08	1497,04

## 5 FLOOR



 covered balcony  
 m<sup>2</sup> — 4,49 / 48,33 — ft<sup>2</sup>

WINDOW VIEW  
 MALL / MOSQUE / PARK / AVENUE /  
 PERSIAN GULF





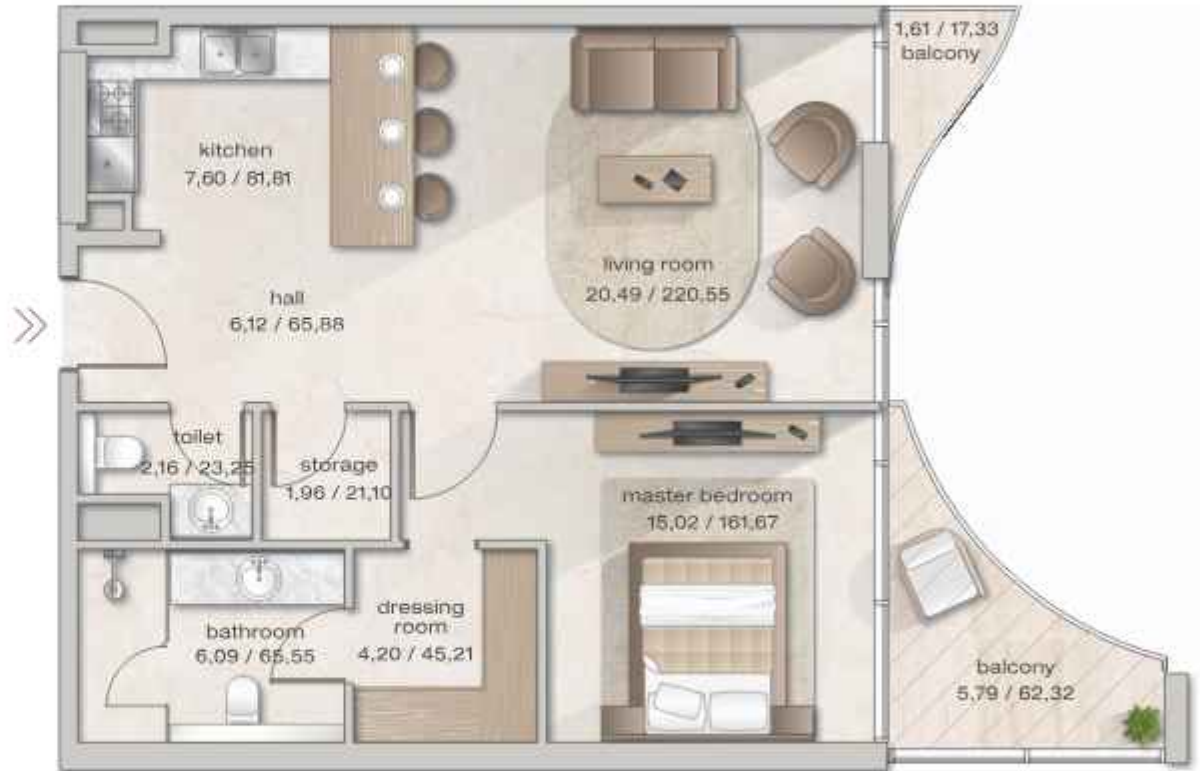
1 BEDROOM_67	m <sup>2</sup>	ft <sup>2</sup>
SUITE AREA	70,84	762,51
BALCONY AREA	7,40	79,65
TOTAL AREA	78,24	842,17

## 5 FLOOR



 covered balcony  
 m<sup>2</sup> — 4,49 / 48,33 — ft<sup>2</sup>

WINDOW VIEW  
 MALL / MOSQUE / PARK / AVENUE /  
 PERSIAN GULF







# Zephyra

RESIDENCES



1 BEDROOM_68	m <sup>2</sup>	ft <sup>2</sup>
SUITE AREA	65,96	709,99
TOTAL AREA	65,96	709,99

## 6 FLOOR



## WINDOW VIEW

MALL / MOSQUE / PARK / AVENUE  
 PERSIAN GULF / CRUISE TERMINAL





# Zephyra


RESIDENCES



1 BEDROOM_71	m <sup>2</sup>	ft <sup>2</sup>
SUITE AREA	69,34	746,37
BALCONY AREA	2,01	21,64
TOTAL AREA	71,35	768,00

## 6 FLOOR



 covered balcony

## WINDOW VIEW

PARK / PERSIAN GULF /  
DUBAI ISLAND BEACH / DIERA MALL /  
SOUK AL MARFA / NIGHT SOUK






1 BEDROOM_72	m <sup>2</sup>	ft <sup>2</sup>
SUITE AREA	70,43	758,10
BALCONY AREA	4,37	47,04
TOTAL AREA	74,80	805,14

## 6 FLOOR



 covered balcony

## WINDOW VIEW

PARK / PERSIAN GULF /  
DUBAI ISLAND BEACH / DIERA MALL /  
SOUK AL MARFA / NIGHT SOUK






# Zephyra

RESIDENCES

1 BEDROOM_74	m <sup>2</sup>	ft <sup>2</sup>
SUITE AREA	69,62	749,38
BALCONY AREA	11,24	120,99
TOTAL AREA	80,86	870,37

## 6 FLOOR



 covered balcony

## WINDOW VIEW

JUMEIRAH MOSQUE / DUBAI FRAME /  
SOUK AL MARFA / NIGHT SOUK






1 BEDROOM_77	m <sup>2</sup>	ft <sup>2</sup>
SUITE AREA	66,58	716,66
BALCONY AREA	5,94	63,94
TOTAL AREA	72,52	780,60

## 7 FLOOR



 covered balcony

## WINDOW VIEW

MALL / MOSQUE / PARK / AVENUE  
PERSIAN GULF / CRUISE TERMINAL





# Zephyra


RESIDENCES



1 BEDROOM_80	m <sup>2</sup>	ft <sup>2</sup>
SUITE AREA	69,24	745,29
BALCONY AREA	6,35	68,35
TOTAL AREA	75,59	813,64

## 7. FLOOR



 covered balcony

## WINDOW VIEW

PARK / PERSIAN GULF /  
 DUBAI ISLAND BEACH / DIERA MALL /  
 SOUK AL MARFA / NIGHT SOUK








1 BEDROOM_81	m <sup>2</sup>	ft <sup>2</sup>
SUITE AREA	70,46	758,42
BALCONY AREA	3,45	37,14
TOTAL AREA	73,91	795,56

7. FLOOR



 covered balcony

WINDOW VIEW

PARK / PERSIAN GULF /  
DUBAI ISLAND BEACH / DIERA MALL /  
SOUK AL MARFA / NIGHT SOUK






1 BEDROOM_83	m <sup>2</sup>	ft <sup>2</sup>
SUITE AREA	69,57	748,84
BALCONY AREA	4,25	45,75
TOTAL AREA	73,82	794,59

## 7 FLOOR



 covered balcony



## WINDOW VIEW


JUMEIRAH MOSQUE / DUBAI FRAME /  
SOUK AL MARFA / NIGHT SOUK



1 BEDROOM_85	m <sup>2</sup>	ft <sup>2</sup>
SUITE AREA	66,32	713,86
BALCONY AREA	2,63	28,31
TOTAL AREA	68,95	742,17

8 FLOOR



 covered balcony

WINDOW VIEW

MALL / MOSQUE / PARK / AVENUE  
PERSIAN GULF / CRUISE TERMINAL






# Zephyra

RESIDENCES

1 BEDROOM_88	m <sup>2</sup>	ft <sup>2</sup>
SUITE AREA	70,39	757,67
BALCONY AREA	5,10	54,90
TOTAL AREA	75,49	812,57

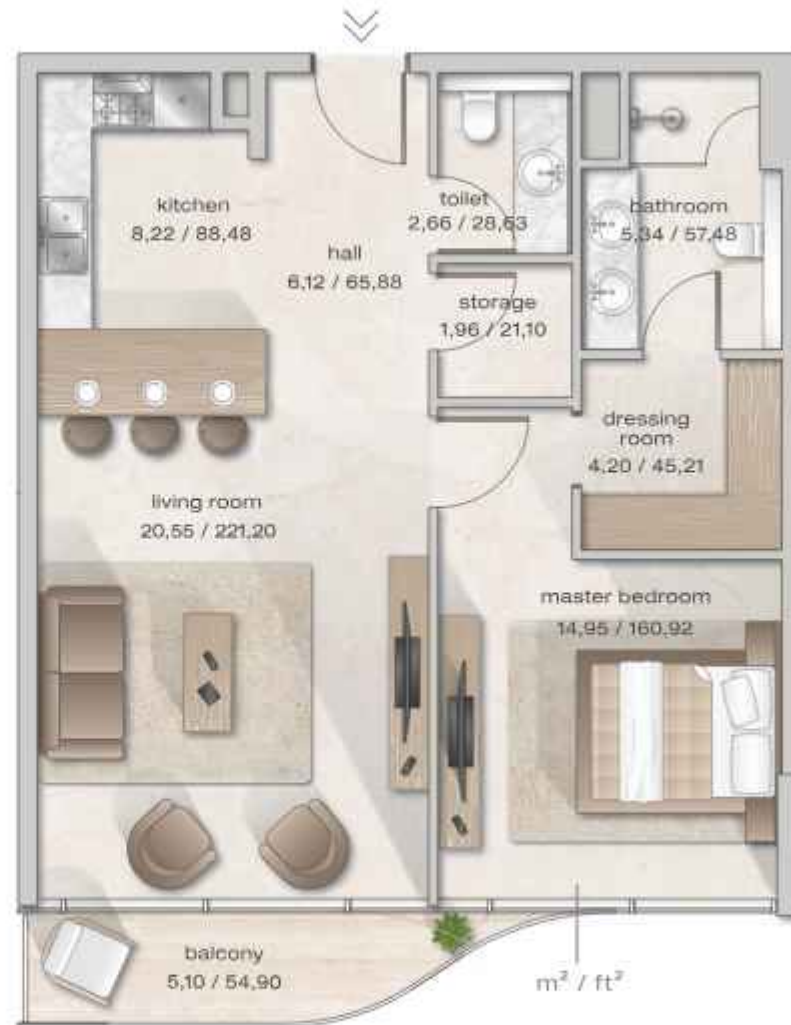
## 8 FLOOR



 covered balcony

## WINDOW VIEW

PARK / PERSIAN GULF /  
DUBAI ISLAND BEACH / DIERA MALL /  
SOUK AL MARFA / NIGHT SOUK





# Zephyra


RESIDENCES



1 BEDROOM_90	m <sup>2</sup>	ft <sup>2</sup>
SUITE AREA	69,94	752,83
BALCONY AREA	11,24	120,99
TOTAL AREA	81,18	873,81

## 8 FLOOR



 covered balcony

## WINDOW VIEW

JUMEIRAH MOSQUE / DUBAI FRAME /  
SOUK AL MARFA / NIGHT SOUK








1 BEDROOM_92	m <sup>2</sup>	ft <sup>2</sup>
SUITE AREA	66,58	716,66
BALCONY AREA	5,94	63,94
TOTAL AREA	72,52	780,60

9 FLOOR



 covered balcony

WINDOW VIEW

MALL / MOSQUE / PARK / AVENUE  
PERSIAN GULF / CRUISE TERMINAL





# Zephyra


RESIDENCES



1 BEDROOM_95	m <sup>2</sup>	ft <sup>2</sup>
SUITE AREA	69,04	743,14
BALCONY AREA	6,33	68,14
TOTAL AREA	75,37	811,28

## 9 FLOOR



 covered balcony

## WINDOW VIEW

PARK / PERSIAN GULF /  
DUBAI ISLAND BEACH / DIERA MALL /  
SOUK AL MARFA / NIGHT SOUK





# Zephyra


RESIDENCES



1 BEDROOM_96	m <sup>2</sup>	ft <sup>2</sup>
SUITE AREA	70,08	754,33
BALCONY AREA	3,45	37,14
TOTAL AREA	73,53	791,47

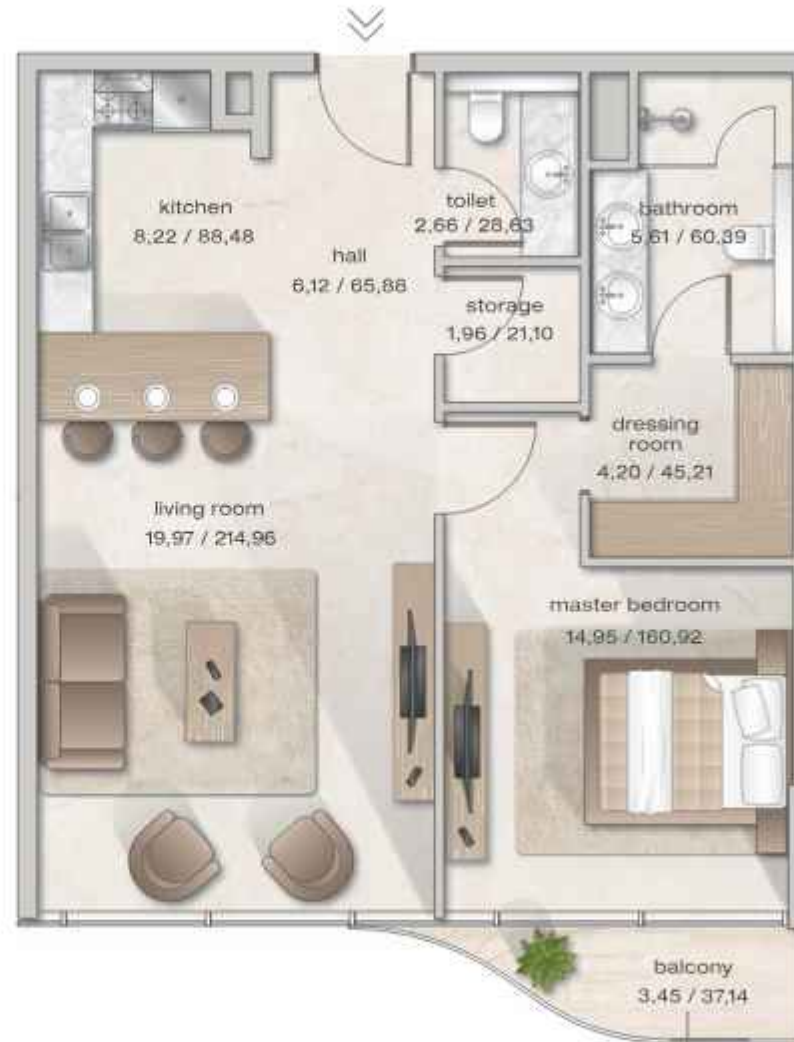
## 9 FLOOR



 covered balcony

## WINDOW VIEW

PARK / PERSIAN GULF /  
DUBAI ISLAND BEACH / DIERA MALL /  
SOUK AL MARFA / NIGHT SOUK



m<sup>2</sup> / ft<sup>2</sup>




# Zephyra

RESIDENCES

1 BEDROOM_99	m <sup>2</sup>	ft <sup>2</sup>
SUITE AREA	63,32	681,57
BALCONY AREA	43,05	463,39
TOTAL AREA	106,37	1144,96

## 9 FLOOR



 covered balcony

## WINDOW VIEW

MALL / PARK / JUMEIRAH MOSQUE /  
DUBAI FRAME / SOUK AL MARFA /  
NIGHT SOUK / PERSIAN GULF







<b>2 BEDROOMS_4</b>	<b>m<sup>2</sup></b>	<b>ft<sup>2</sup></b>
SUITE AREA	135,86	1462,38
TOTAL AREA	135,86	1462,38

**1 PODIUM FLOOR**



m<sup>2</sup> — 4,49 / 48,33 — ft<sup>2</sup>

**WINDOW VIEW**

MALL / MOSQUE / PARK / AVENUE  
PERSIAN GULF / CRUISE TERMINAL  
MOSQUE / DUBAI FRAME








2 BEDROOMS_11	m <sup>2</sup>	ft <sup>2</sup>
SUITE AREA	95,82	1031,40
BALCONY AREA	32,30	347,67
TOTAL AREA	128,12	1379,07

## 1 FLOOR



 covered balcony

## WINDOW VIEW

MALL / MOSQUE / PARK / AVENUE  
PERSIAN GULF / CRUISE TERMINAL





# Zephyra


RESIDENCES



2 BEDROOMS_12	m <sup>2</sup>	ft <sup>2</sup>
SUITE AREA	105,22	1132,58
BALCONY AREA	18,79	202,25
TOTAL AREA	124,01	1334,83

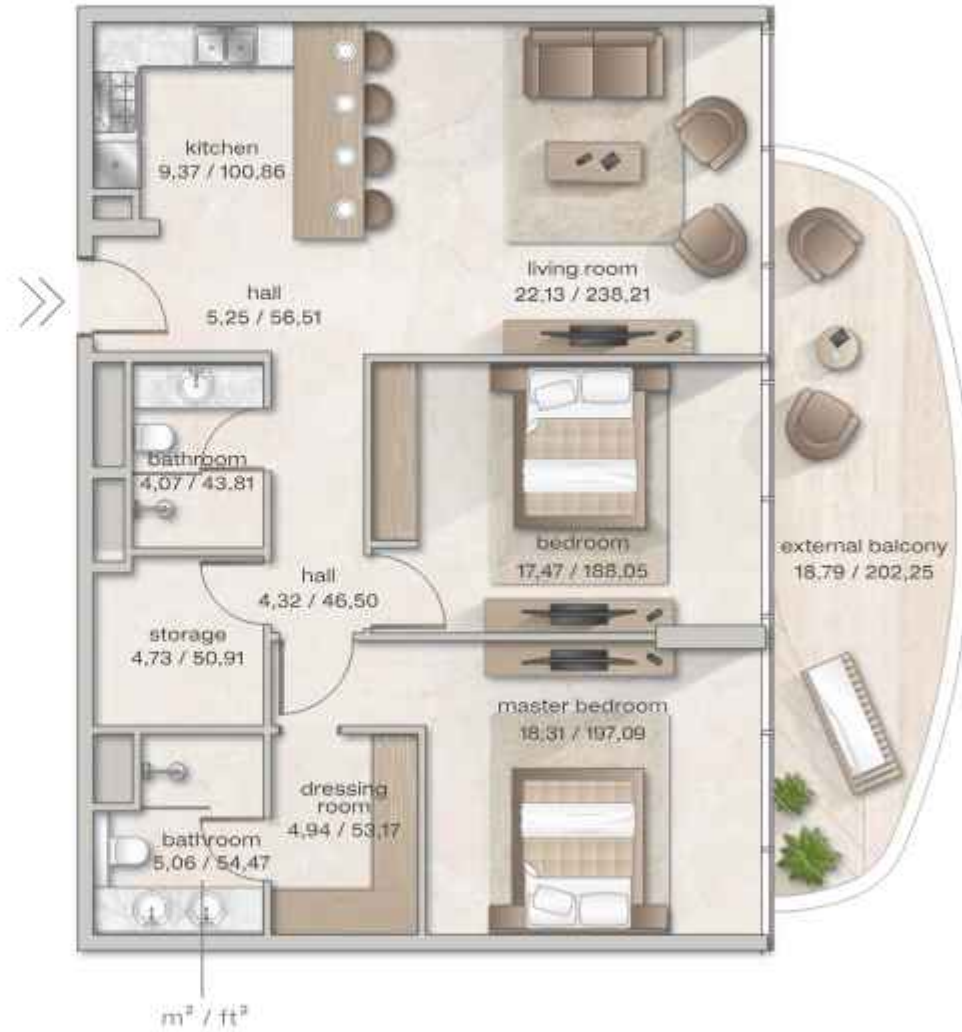
## 1 FLOOR



 covered balcony

## WINDOW VIEW

PARK / PERSIAN GULF /  
DUBAI ISLAND BEACH / DIERA MALL /  
SOUK AL MARFA / NIGHT SOUK






2 BEDROOMS_15	m <sup>2</sup>	ft <sup>2</sup>
SUITE AREA	138,18	1487,36
BALCONY AREA	84,62	910,84
TOTAL AREA	222,80	2398,20

1 FLOOR



 covered balcony

WINDOW VIEW

JUMEIRAH MOSQUE / DUBAI FRAME /  
SOUK AL MARFA / NIGHT SOUK





# Zephyra


RESIDENCES



2 BEDROOMS_16	m <sup>2</sup>	ft <sup>2</sup>
SUITE AREA	105,64	1137,10
BALCONY AREA	35,53	382,44
TOTAL AREA	141,17	1519,54

## 1 FLOOR



 covered balcony



WINDOW VIEW  
 JUMEIRAH MOSQUE / DUBAI FRAME /  
 SOUK AL MARFA / NIGHT SOUK





# Zephyra


RESIDENCES



2 BEDROOMS_18	m <sup>2</sup>	ft <sup>2</sup>
SUITE AREA	141,20	1519,86
BALCONY AREA	84,74	912,13
TOTAL AREA	225,94	2432,00

## 1 FLOOR



 covered balcony

## WINDOW VIEW

JUMEIRAH MOSQUE / DUBAI FRAME /  
SOUK AL MARFA / NIGHT SOUK /  
PERSIAN GULF








2 BEDROOMS_19	m <sup>2</sup>	ft <sup>2</sup>
SUITE AREA	118,97	1280,58
BALCONY AREA	29,26	314,95
TOTAL AREA	148,23	1595,53

1 FLOOR



 covered balcony

WINDOW VIEW  
MALL / MOSQUE / PARK / AVENUE /  
PERSIAN GULF





2 BEDROOMS_25	m <sup>2</sup>	ft <sup>2</sup>
SUITE AREA	103,29	1111,80
BALCONY AREA	3,73	40,15
TOTAL AREA	107,02	1151,95

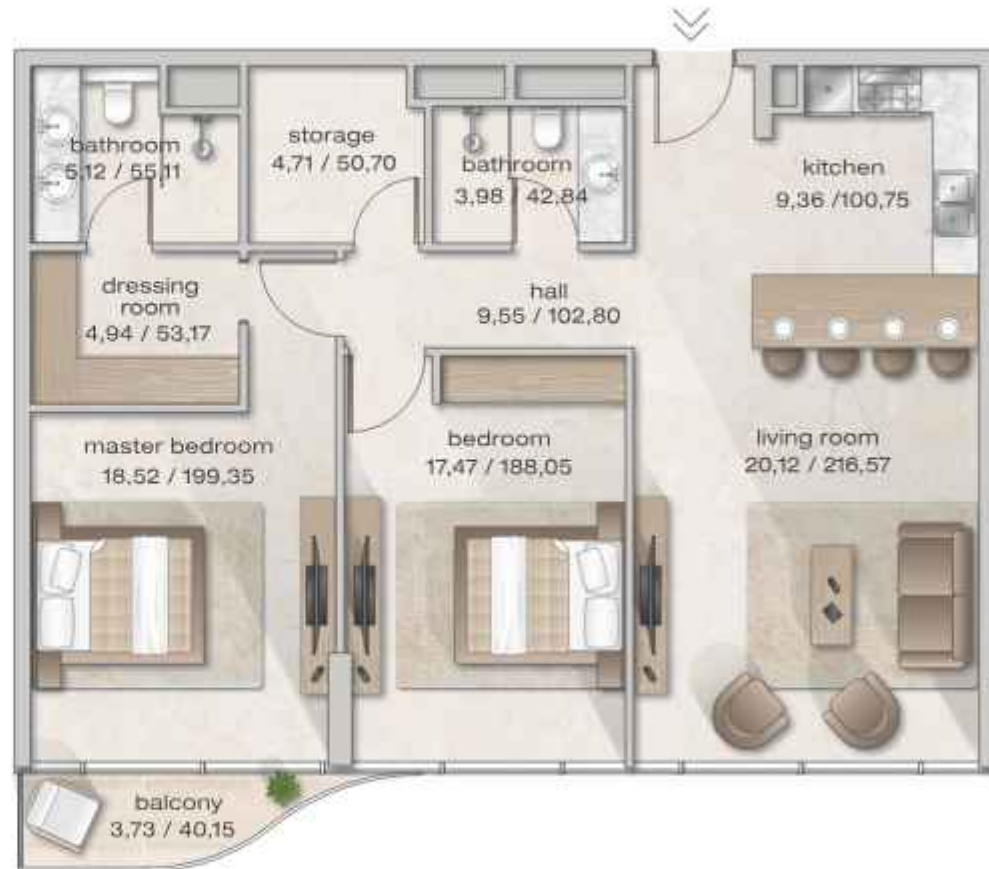
2 FLOOR



m<sup>2</sup> — 4,49 / 48,33 — ft<sup>2</sup>

WINDOW VIEW

PARK / PERSIAN GULF /  
DUBAI ISLAND BEACH / DIERA MALL /  
SOUK AL MARFA / NIGHT SOUK





2 BEDROOMS_28	m <sup>2</sup>	ft <sup>2</sup>
SUITE AREA	134,81	1451,08
BALCONY AREA	19,63	211,30
TOTAL AREA	154,44	1662,38

### 2 FLOOR



 covered balcony  
m<sup>2</sup> — 4,49 / 48,33 — ft<sup>2</sup>



### WINDOW VIEW


JUMEIRAH MOSQUE / DUBAI FRAME /  
SOUK AL MARFA / NIGHT SOUK



2 BEDROOMS_29	m <sup>2</sup>	ft <sup>2</sup>
SUITE AREA	104,35	1123,21
BALCONY AREA	11,24	120,99
TOTAL AREA	115,59	1244,20

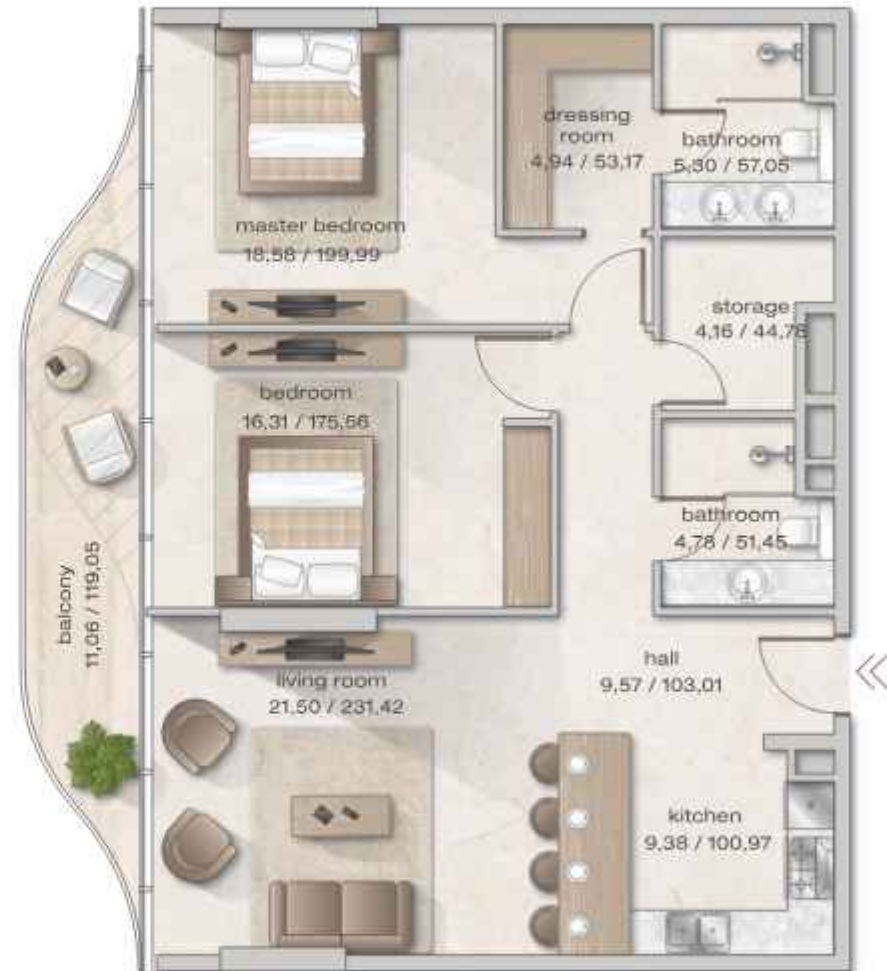
## 2 FLOOR



 covered balcony  
 m<sup>2</sup> — 4,49 / 48,33 — ft<sup>2</sup>

## WINDOW VIEW

JUMEIRAH MOSQUE / DUBAI FRAME /  
 SOUK AL MARFA / NIGHT SOUK







# Zephyra

RESIDENCES

2 BEDROOMS_31	m <sup>2</sup>	ft <sup>2</sup>
SUITE AREA	128,77	1386,07
BALCONY AREA	40,69	437,98
TOTAL AREA	169,46	1824,05

## 2 FLOOR



 covered balcony  
 m<sup>2</sup> — 4,49 / 48,33 — ft<sup>2</sup>

## WINDOW VIEW

JUMEIRAH MOSQUE / DUBAI FRAME /  
 SOUK AL MARFA / NIGHT SOUK /  
 PERSIAN GULF







# Zephyra

RESIDENCES

<b>2 BEDROOMS_32</b>	m <sup>2</sup>	ft <sup>2</sup>
SUITE AREA	132,15	1422,45
BALCONY AREA	35,41	381,15
TOTAL AREA	167,56	1803,60

## 2 FLOOR



 covered balcony  
 m<sup>2</sup> — 4,49 / 48,33 — ft<sup>2</sup>

WINDOW VIEW  
 MALL / MOSQUE / PARK / AVENUE /  
 PERSIAN GULF





2 BEDROOMS_41	m <sup>2</sup>	ft <sup>2</sup>
SUITE AREA	134,47	1447,42
BALCONY AREA	23,74	255,53
TOTAL AREA	158,21	1702,96

### 3 FLOOR



 covered balcony  
m<sup>2</sup> — 4,49 / 48,33 — ft<sup>2</sup>

### WINDOW VIEW

JUMEIRAH MOSQUE / DUBAI FRAME /  
SOUK AL MARFA / NIGHT SOUK





# Zephyra

RESIDENCES

<b>2 BEDROOMS_44</b>	m <sup>2</sup>	ft <sup>2</sup>
SUITE AREA	121,62	1309,11
BALCONY AREA	47,74	513,87
TOTAL AREA	169,36	1822,97

## 3 FLOOR



 covered balcony  
 m<sup>2</sup> — 4,49 / 48,33 — ft<sup>2</sup>

## WINDOW VIEW

JUMEIRAH MOSQUE / DUBAI FRAME /  
 SOUK AL MARFA / NIGHT SOUK /  
 PERSIAN GULF





# Zephyra

RESIDENCES

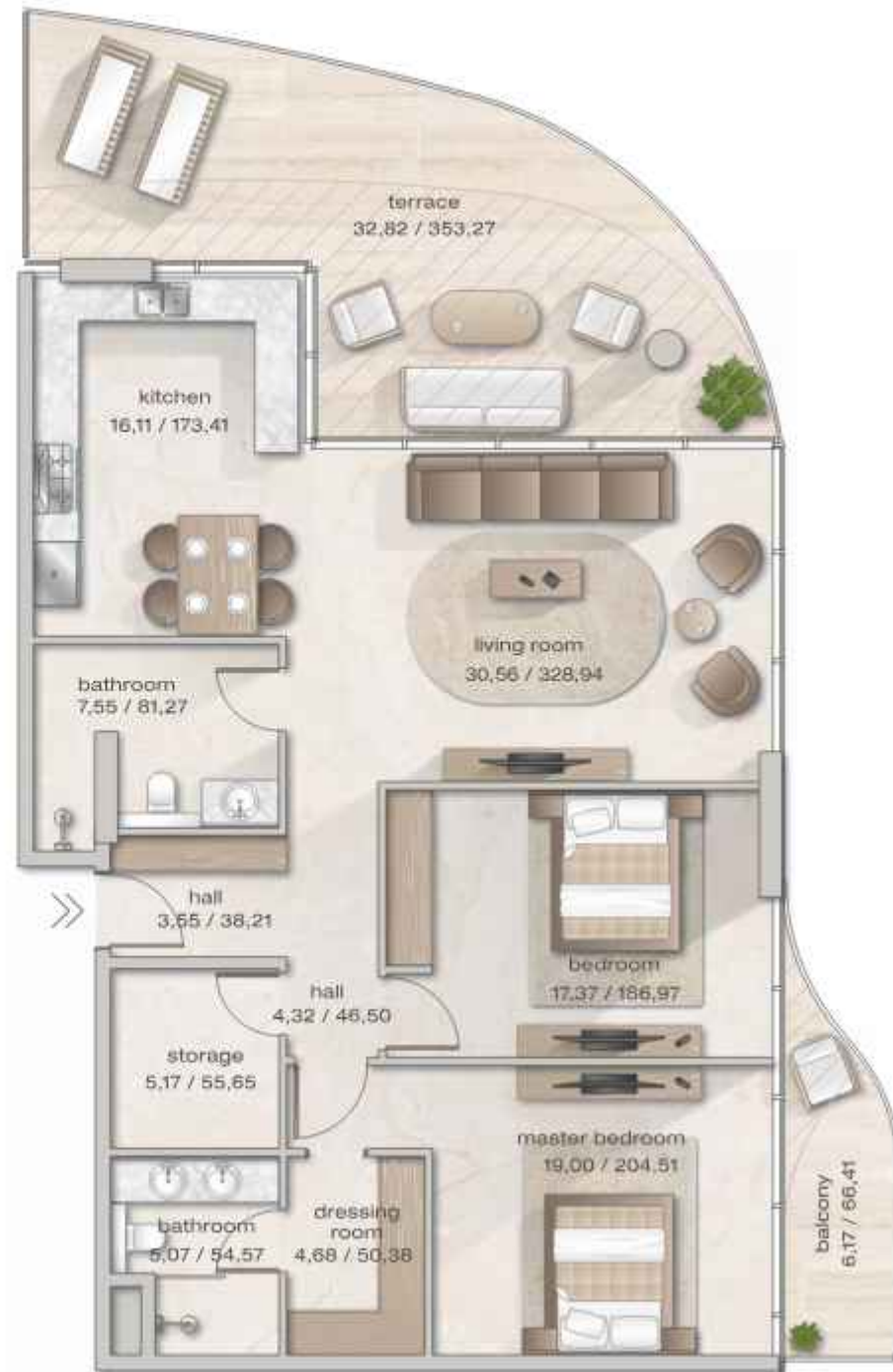
2 BEDROOMS_45	m <sup>2</sup>	ft <sup>2</sup>
SUITE AREA	124,49	1340,00
BALCONY AREA	38,99	419,68
TOTAL AREA	163,48	1759,68

## 3 FLOOR



 covered balcony  
 m<sup>2</sup> — 4,49 / 48,33 — ft<sup>2</sup>

WINDOW VIEW  
 MALL / MOSQUE / PARK / AVENUE /  
 PERSIAN GULF







2 BEDROOMS_48	m <sup>2</sup>	ft <sup>2</sup>
SUITE AREA	137,95	1484,88
BALCONY AREA	39,46	424,74
TOTAL AREA	177,41	1909,62

4 FLOOR



 covered balcony  
m<sup>2</sup> 4,49 / 48,33 ft<sup>2</sup>

WINDOW VIEW

MALL / MOSQUE / PARK / AVENUE  
PERSIAN GULF / CRUISE TERMINAL







2 BEDROOMS_52	m <sup>2</sup>	ft <sup>2</sup>
SUITE AREA	134,58	1448,61
BALCONY AREA	19,63	211,30
TOTAL AREA	154,21	1659,90

4 FLOOR



 covered balcony  
m<sup>2</sup> — 4,49 / 48,33 — ft<sup>2</sup>

WINDOW VIEW

JUMEIRAH MOSQUE / DUBAI FRAME /  
SOUK AL MARFA / NIGHT SOUK





# Zephyra

RESIDENCES

2 BEDROOMS_55	m <sup>2</sup>	ft <sup>2</sup>
SUITE AREA	120,48	1296,83
BALCONY AREA	23,18	249,51
TOTAL AREA	143,66	1546,34

## 4 FLOOR



 covered balcony  
 m<sup>2</sup> — 4,49 / 48,33 — ft<sup>2</sup>

## WINDOW VIEW

JUMEIRAH MOSQUE / DUBAI FRAME /  
 SOUK AL MARFA / NIGHT SOUK /  
 PERSIAN GULF





# Zephyra

RESIDENCES

<b>2 BEDROOMS_56</b>	m <sup>2</sup>	ft <sup>2</sup>
SUITE AREA	123,30	1327,19
BALCONY AREA	27,05	291,16
TOTAL AREA	150,35	1618,35

## 4 FLOOR



 covered balcony  
 m<sup>2</sup> — 4,49 / 48,33 — ft<sup>2</sup>

WINDOW VIEW  
 MALL / MOSQUE / PARK / AVENUE /  
 PERSIAN GULF





2 BEDROOMS_59	m <sup>2</sup>	ft <sup>2</sup>
SUITE AREA	126,25	1358,94
BALCONY AREA	48,08	517,53
TOTAL AREA	174,33	1876,47

5 FLOOR



 covered balcony  
m<sup>2</sup> — 4,49 / 48,33 — ft<sup>2</sup>

WINDOW VIEW

MALL / MOSQUE / PARK / AVENUE  
PERSIAN GULF / CRUISE TERMINAL








2 BEDROOMS_63	m <sup>2</sup>	ft <sup>2</sup>
SUITE AREA	134,51	1447,85
BALCONY AREA	23,74	255,53
TOTAL AREA	158,25	1703,39

5 FLOOR



 covered balcony  
m<sup>2</sup> — 4,49 / 48,33 — ft<sup>2</sup>



WINDOW VIEW

JUMEIRAH MOSQUE / DUBAI FRAME /  
SOUK AL MARFA / NIGHT SOUK



# Zephyra

RESIDENCES



2 BEDROOMS_64	m <sup>2</sup>	ft <sup>2</sup>
SUITE AREA	105,10	1131,29
BALCONY AREA	9,11	98,06
TOTAL AREA	114,21	1229,35

## 5 FLOOR



 covered balcony  
 m<sup>2</sup> — 4,49 / 48,33 — ft<sup>2</sup>

## WINDOW VIEW

JUMEIRAH MOSQUE / DUBAI FRAME /  
 SOUK AL MARFA / NIGHT SOUK





# Zephyra

RESIDENCES

2 BEDROOMS_65	m <sup>2</sup>	ft <sup>2</sup>
SUITE AREA	135,46	1458,08
BALCONY AREA	54,95	591,48
TOTAL AREA	190,41	2049,55

## 5 FLOOR



 covered balcony  
 m<sup>2</sup> — 4,49 / 48,33 — ft<sup>2</sup>

## WINDOW VIEW

JUMEIRAH MOSQUE / DUBAI FRAME /  
 SOUK AL MARFA / NIGHT SOUK /  
 PERSIAN GULF






<b>2 BEDROOMS_69</b>	m <sup>2</sup>	ft <sup>2</sup>
<b>SUITE AREA</b>	121,82	1311,26
<b>BALCONY AREA</b>	29,50	317,54
<b>TOTAL AREA</b>	151,32	1628,79

## 6 FLOOR



 covered balcony

## WINDOW VIEW

MALL / MOSQUE / PARK / AVENUE  
PERSIAN GULF / CRUISE TERMINAL








2 BEDROOMS_70	m <sup>2</sup>	ft <sup>2</sup>
SUITE AREA	136,18	1465,83
BALCONY AREA	64,57	695,03
TOTAL AREA	200,75	2160,85

## 6 FLOOR



 covered balcony

m<sup>2</sup> / ft<sup>2</sup>

## WINDOW VIEW

MALL / MOSQUE / PARK / AVENUE  
PERSIAN GULF / CRUISE TERMINAL






2 BEDROOMS_73	m <sup>2</sup>	ft <sup>2</sup>
SUITE AREA	134,92	1452,27
BALCONY AREA	19,63	211,30
TOTAL AREA	154,55	1663,56

6 FLOOR



 covered balcony



WINDOW VIEW

JUMEIRAH MOSQUE / DUBAI FRAME /  
SOUK AL MARFA / NIGHT SOUK




# Zephyra

RESIDENCES

2 BEDROOMS_75	m <sup>2</sup>	ft <sup>2</sup>
SUITE AREA	131,88	1419,54
BALCONY AREA	52,62	566,40
TOTAL AREA	184,50	1985,94

## 6 FLOOR



 covered balcony

## WINDOW VIEW

JUMEIRAH MOSQUE / DUBAI FRAME /  
SOUK AL MARFA / NIGHT SOUK /  
PERSIAN GULF






# Zephyra

RESIDENCES

2 BEDROOMS_76	m <sup>2</sup>	ft <sup>2</sup>
SUITE AREA	129,46	1393,49
BALCONY AREA	68,94	742,06
TOTAL AREA	198,40	2135,56

## 6 FLOOR



 covered balcony

WINDOW VIEW  
MALL / MOSQUE / PARK / AVENUE /  
PERSIAN GULF








<b>2 BEDROOMS_78</b>	m <sup>2</sup>	ft <sup>2</sup>
<b>SUITE AREA</b>	106,89	1150,55
<b>BALCONY AREA</b>	63,46	683,08
<b>TOTAL AREA</b>	170,35	1833,63

**7. FLOOR**



 covered balcony

**WINDOW VIEW**

MALL / MOSQUE / PARK / AVENUE  
PERSIAN GULF / CRUISE TERMINAL






2 BEDROOMS_79	m <sup>2</sup>	ft <sup>2</sup>
SUITE AREA	116,51	1254,10
BALCONY AREA	20,90	224,97
TOTAL AREA	137,41	1479,07

7. FLOOR



 covered balcony

WINDOW VIEW

MALL / MOSQUE / PARK / AVENUE  
PERSIAN GULF / CRUISE TERMINAL






2 BEDROOMS_82	m <sup>2</sup>	ft <sup>2</sup>
SUITE AREA	134,23	1444,84
BALCONY AREA	23,74	255,53
TOTAL AREA	157,97	1700,37

7. FLOOR



 covered balcony



WINDOW VIEW


JUMEIRAH MOSQUE / DUBAI FRAME /  
SOUK AL MARFA / NIGHT SOUK



<b>2 BEDROOMS_86</b>	m <sup>2</sup>	ft <sup>2</sup>
SUITE AREA	106,43	1145,60
BALCONY AREA	36,66	394,60
TOTAL AREA	143,09	1540,21

8 FLOOR



 covered balcony

WINDOW VIEW

MALL / MOSQUE / PARK / AVENUE  
PERSIAN GULF / CRUISE TERMINAL








2 BEDROOMS_89	m <sup>2</sup>	ft <sup>2</sup>
SUITE AREA	134,57	1448,50
BALCONY AREA	18,90	203,44
TOTAL AREA	153,47	1651,94

## 8 FLOOR



 covered balcony



## WINDOW VIEW


JUMEIRAH MOSQUE / DUBAI FRAME /  
SOUK AL MARFA / NIGHT SOUK



2 BEDROOMS_91	m <sup>2</sup>	ft <sup>2</sup>
SUITE AREA	120,87	1301,03
BALCONY AREA	120,99	1302,32
TOTAL AREA	241,86	2603,36

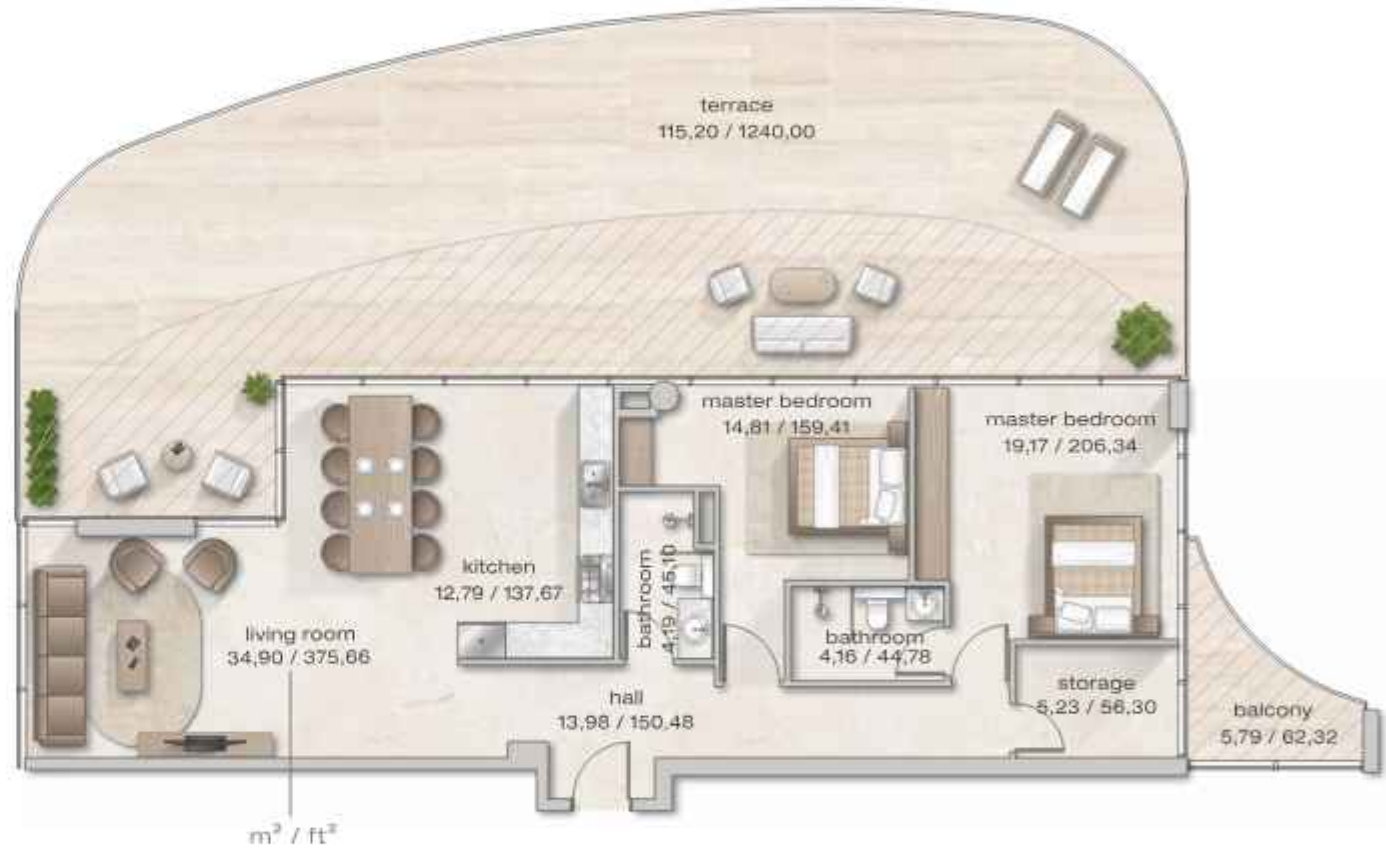
## 8 FLOOR



 covered balcony

## WINDOW VIEW

MALL / PARK / JUMEIRAH MOSQUE /  
 DUBAI FRAME / SOUK AL MARFA /  
 NIGHT SOUK / PERSIAN GULF






<b>2 BEDROOMS_93</b>	m <sup>2</sup>	ft <sup>2</sup>
<b>SUITE AREA</b>	94,85	1020,96
<b>BALCONY AREA</b>	33,03	355,53
<b>TOTAL AREA</b>	127,88	1376,49

## 9 FLOOR



 covered balcony

## WINDOW VIEW

MALL / MOSQUE / PARK / AVENUE  
PERSIAN GULF / CRUISE TERMINAL






2 BEDROOMS_94	m <sup>2</sup>	ft <sup>2</sup>
SUITE AREA	105,75	1138,28
BALCONY AREA	30,68	330,24
TOTAL AREA	136,43	1468,52

9 FLOOR



 covered balcony

WINDOW VIEW

MALL / MOSQUE / PARK / AVENUE  
PERSIAN GULF / CRUISE TERMINAL








2 BEDROOMS_97	m <sup>2</sup>	ft <sup>2</sup>
SUITE AREA	134,78	1450,76
BALCONY AREA	23,74	255,53
TOTAL AREA	158,52	1706,29

9 FLOOR



 covered balcony



m<sup>2</sup> / ft<sup>2</sup>

WINDOW VIEW

JUMEIRAH MOSQUE / DUBAI FRAME /  
SOUK AL MARFA / NIGHT SOUK




# Zephyra

RESIDENCES

2 BEDROOMS_98	m <sup>2</sup>	ft <sup>2</sup>
SUITE AREA	100,88	1085,86
BALCONY AREA	44,61	480,18
TOTAL AREA	145,49	1566,04

## 9 FLOOR



 covered balcony

## WINDOW VIEW

JUMEIRAH MOSQUE / DUBAI FRAME /  
SOUK AL MARFA / NIGHT SOUK





# Zephyra

RESIDENCES



3 BEDROOMS_24	m <sup>2</sup>	ft <sup>2</sup>
SUITE AREA	151,77	1633,64
BALCONY AREA	74,06	797,17
TOTAL AREA	225,83	2430,81

## 2 FLOOR



 covered balcony  
 m<sup>2</sup> — 4,49 / 48,33 — ft<sup>2</sup>

## WINDOW VIEW

PARK / PERSIAN GULF /  
 DUBAI ISLAND BEACH / DIERA MALL /  
 SOUK AL MARFA / NIGHT SOUK







# Zephyra

RESIDENCES



<b>3 BEDROOMS_37</b>	<b>m<sup>2</sup></b>	<b>ft<sup>2</sup></b>
SUITE AREA	149,75	1611,89
BALCONY AREA	79,88	859,82
TOTAL AREA	229,63	2471,71

## 3 FLOOR



 covered balcony  
 m<sup>2</sup> — 4,49 / 48,33 — ft<sup>2</sup>

## WINDOW VIEW

PARK / PERSIAN GULF /  
 DUBAI ISLAND BEACH / DIERA MALL /  
 SOUK AL MARFA / NIGHT SOUK







3 BEDROOMS_49	m <sup>2</sup>	ft <sup>2</sup>
SUITE AREA	164,08	1766,14
BALCONY AREA	67,71	728,82
TOTAL AREA	231,79	2494,96

#### 4 FLOOR



 covered balcony  
 m<sup>2</sup> — 4,49 / 48,33 — ft<sup>2</sup>

#### WINDOW VIEW

MALL / MOSQUE / PARK / AVENUE  
 PERSIAN GULF / CRUISE TERMINAL





<b>3 BEDROOMS_60</b>	m <sup>2</sup>	ft <sup>2</sup>
<b>SUITE AREA</b>	158,29	1703,82
<b>BALCONY AREA</b>	30,89	332,50
<b>TOTAL AREA</b>	189,18	2036,31

5 FLOOR



 covered balcony  
m<sup>2</sup> — 4,49 / 48,33 — ft<sup>2</sup>

WINDOW VIEW

MALL / MOSQUE / PARK / AVENUE  
PERSIAN GULF / CRUISE TERMINAL






<b>3 BEDROOMS_84</b>	<b>m<sup>2</sup></b>	<b>ft<sup>2</sup></b>
SUITE AREA	190,33	2048,69
BALCONY AREA	149,86	1613,08
TOTAL AREA	340,19	3661,77

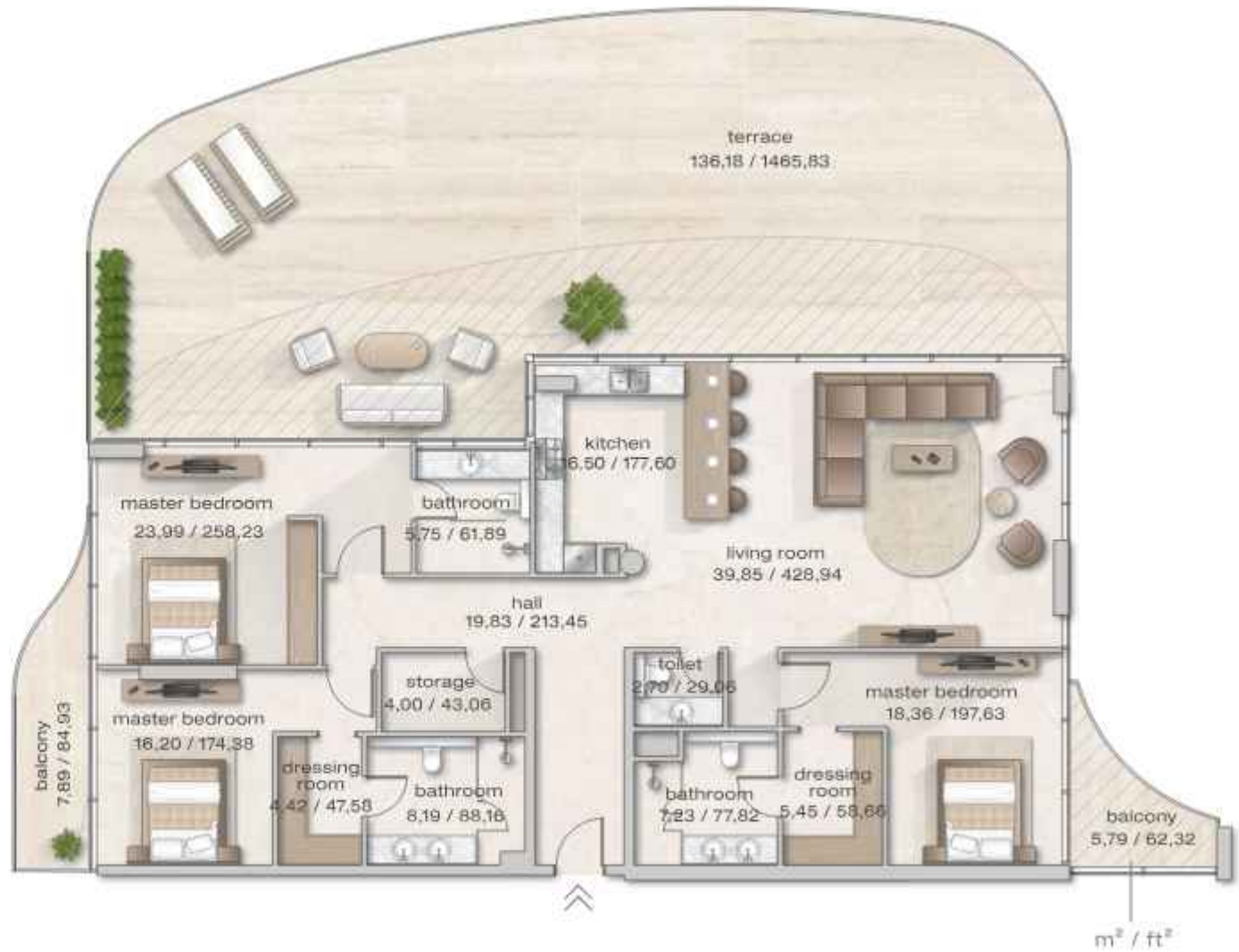
## 7. FLOOR



 covered balcony

## WINDOW VIEW

MALL / PARK / JUMEIRAH MOSQUE /  
 DUBAI FRAME / SOUK AL MARFA /  
 NIGHT SOUK / PERSIAN GULF






<b>3 BEDROOMS_87</b>	<b>m<sup>2</sup></b>	<b>ft<sup>2</sup></b>
SUITE AREA	159,23	1713,94
BALCONY AREA	51,77	557,25
TOTAL AREA	211,00	2271,18

## 8 FLOOR



 covered balcony

## WINDOW VIEW

MALL / MOSQUE / PARK / AVENUE  
PERSIAN GULF / CRUISE TERMINAL







DUPLEX_1	m <sup>2</sup>	ft <sup>2</sup>
SUITE AREA	147,97	1592,73
BALCONY AREA	15,59	167,81
TOTAL AREA	163,56	1760,54

1-2 PODIUM FLOOR



 covered balcony  
m<sup>2</sup> — 4,49 / 48,33 — ft<sup>2</sup>

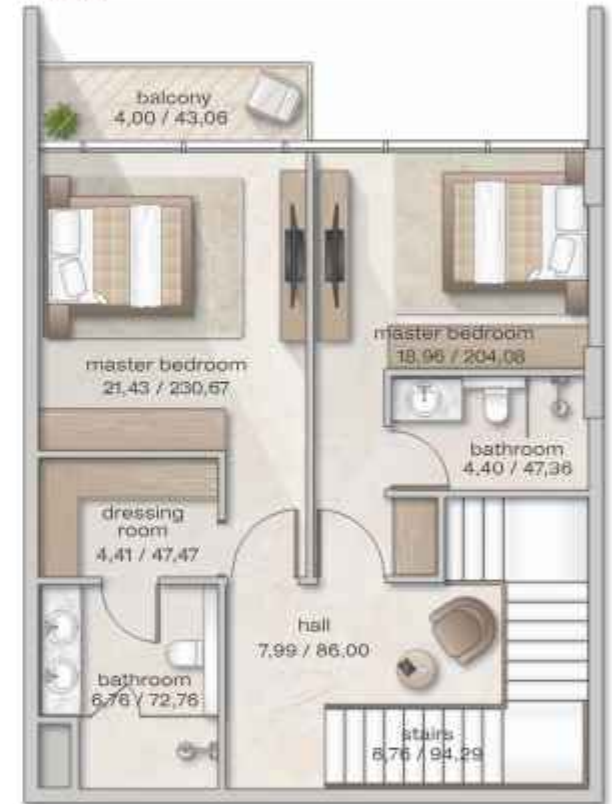
WINDOW VIEW

MALL / MOSQUE / PARK / AVENUE  
PERSIAN GULF / CRUISE TERMINAL  
MOSQUE / DUBAI FRAME

1 floor



2 floor





# Zephyra

RESIDENCES



DUPLEX_2	m <sup>2</sup>	ft <sup>2</sup>
SUITE AREA	148,48	1598,22
BALCONY AREA	15,59	167,81
TOTAL AREA	164,07	1766,03

## 1-2 PODIUM FLOOR



 covered balcony  
 m<sup>2</sup> — 4,49 / 48,33 — ft<sup>2</sup>

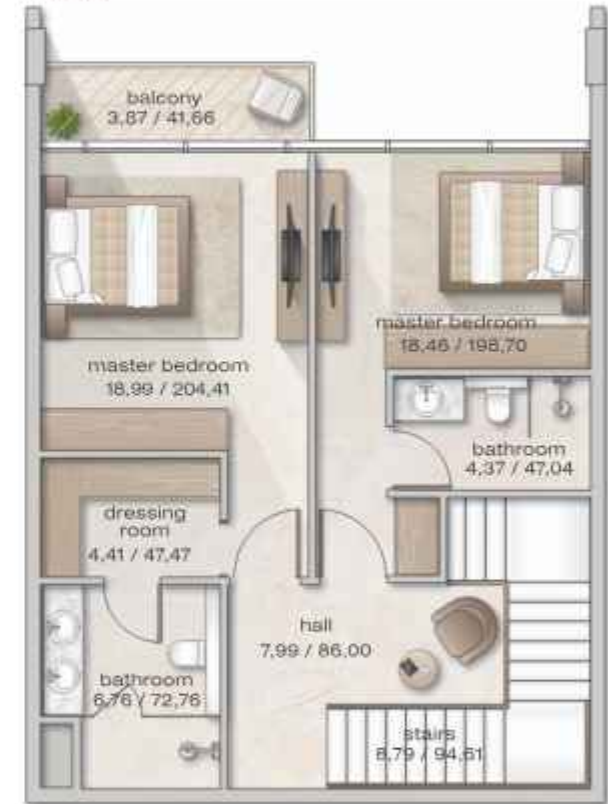
## WINDOW VIEW

MALL / MOSQUE / PARK / AVENUE  
 PERSIAN GULF / CRUISE TERMINAL  
 MOSQUE / DUBAI FRAME

1 floor



2 floor





# Zephyra

RESIDENCES

DUPLEX_3	m <sup>2</sup>	ft <sup>2</sup>
SUITE AREA	148,47	1598,12
BALCONY AREA	15,89	171,04
TOTAL AREA	164,36	1769,15

## 1-2 PODIUM FLOOR



 covered balcony  
 m<sup>2</sup> — 4,49 / 48,33 — ft<sup>2</sup>

## WINDOW VIEW

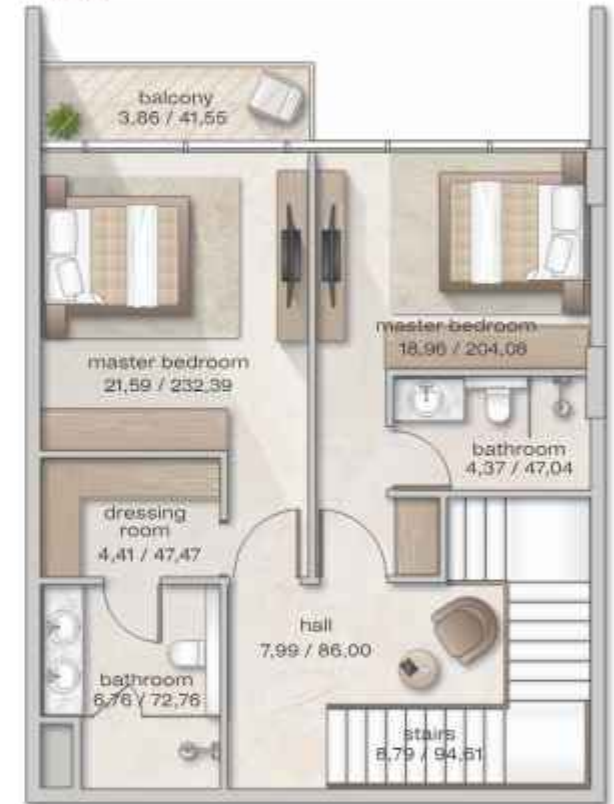
MALL / MOSQUE / PARK / AVENUE  
 PERSIAN GULF / CRUISE TERMINAL  
 MOSQUE / DUBAI FRAME



1 floor



2 floor





DUPLEX_5	m <sup>2</sup>	ft <sup>2</sup>
SUITE AREA	146,40	1575,83
BALCONY AREA	17,37	186,97
TOTAL AREA	163,77	1762,80

## 1-2 PODIUM FLOOR



 covered balcony  
 m<sup>2</sup> — 4,49 / 48,33 — ft<sup>2</sup>

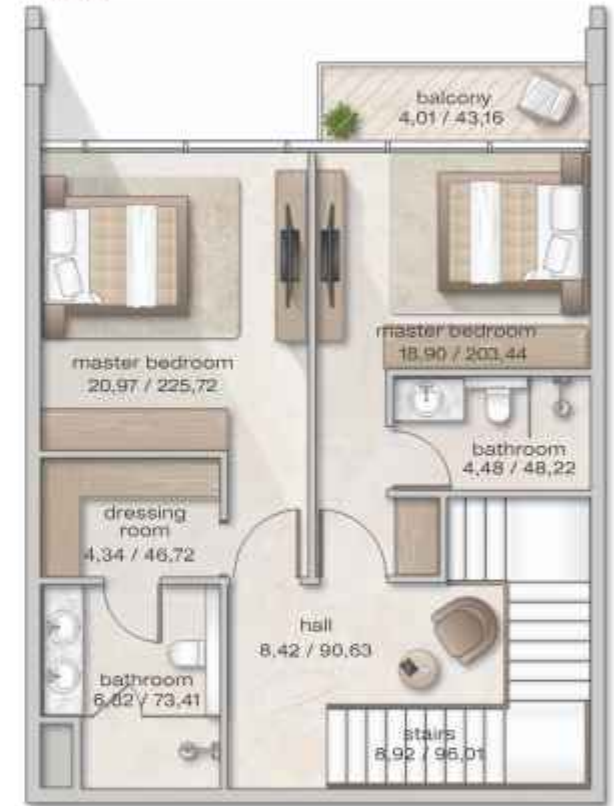
## WINDOW VIEW

MALL / MOSQUE / PARK / AVENUE /  
 PERSIAN GULF / JUMEIRAH  
 MOSQUE / DUBAI FRAME

1 floor



2 floor







DUPLEX_6	m <sup>2</sup>	ft <sup>2</sup>
SUITE AREA	150,19	1616,63
BALCONY AREA	17,28	186,00
TOTAL AREA	167,47	1802,63

## 1-2 PODIUM FLOOR



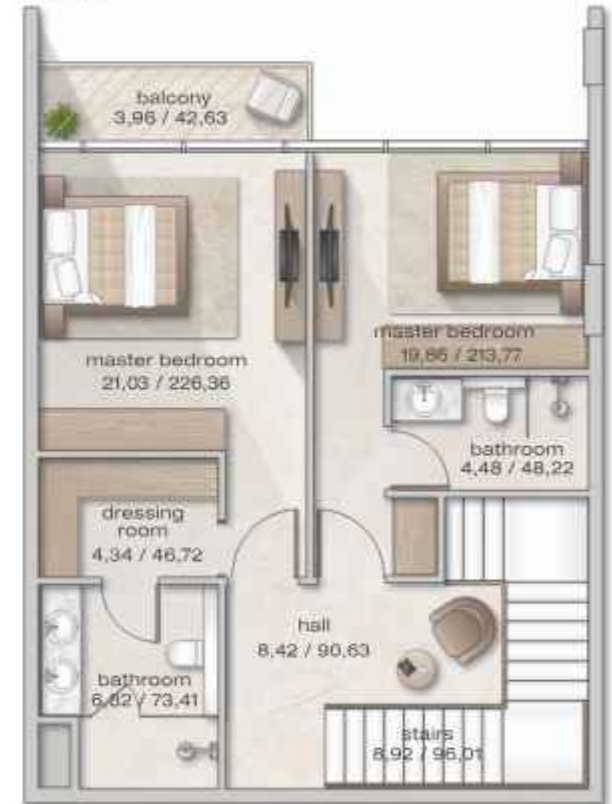
 covered balcony  
 m<sup>2</sup> — 4,49 / 48,33 — ft<sup>2</sup>

WINDOW VIEW  
 MALL / MOSQUE / PARK / AVENUE /  
 PERSIAN GULF / JUMEIRAH  
 MOSQUE / DUBAI FRAME

1 floor



2 floor





DUPLEX_7	m <sup>2</sup>	ft <sup>2</sup>
SUITE AREA	148,14	1594,56
BALCONY AREA	17,64	189,88
TOTAL AREA	165,78	1784,44

## 1-2 PODIUM FLOOR



 covered balcony  
 m<sup>2</sup> — 4,49 / 48,33 — ft<sup>2</sup>

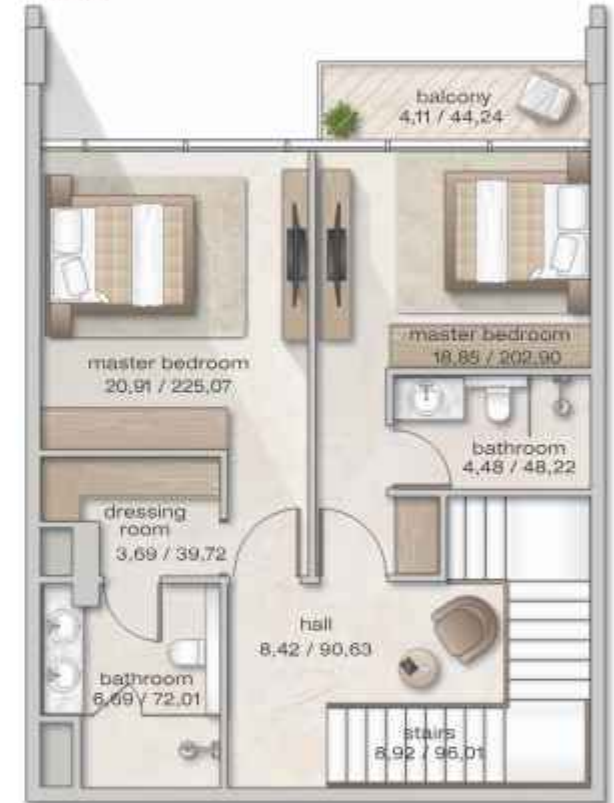
## WINDOW VIEW

MALL / MOSQUE / PARK / AVENUE /  
 PERSIAN GULF / JUMEIRAH  
 MOSQUE / DUBAI FRAME

### 1 floor



### 2 floor





DUPLEX_8	m <sup>2</sup>	ft <sup>2</sup>
SUITE AREA	149,11	1605,01
BALCONY AREA	17,62	189,66
TOTAL AREA	166,73	1794,67

## 1-2- PODIUM FLOOR



 covered balcony  
 m<sup>2</sup> — 4,49 / 48,33 — ft<sup>2</sup>

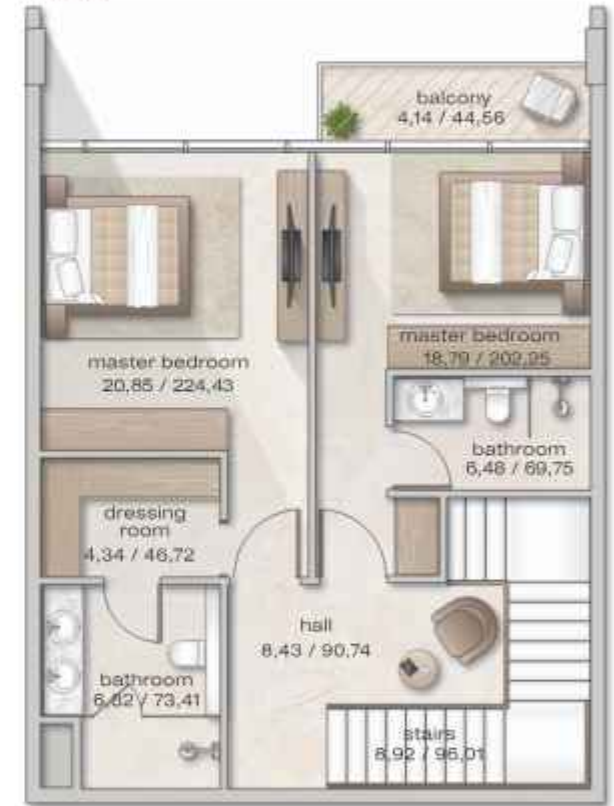
## WINDOW VIEW

MALL / MOSQUE / PARK / AVENUE /  
 PERSIAN GULF / JUMEIRAH  
 MOSQUE / DUBAI FRAME

## 1 floor



## 2 floor





# Zephyra

RESIDENCES



DUPLEX_9	m <sup>2</sup>	ft <sup>2</sup>
SUITE AREA	148,72	1600,81
BALCONY AREA	15,15	163,07
TOTAL AREA	163,87	1763,88

## 1-2 PODIUM FLOOR



 covered balcony  
 m<sup>2</sup> — 4,49 / 48,33 — ft<sup>2</sup>

## WINDOW VIEW

MALL / MOSQUE / PARK / AVENUE /  
 PERSIAN GULF / JUMEIRAH  
 MOSQUE / DUBAI FRAME

1 floor



2 floor







PENTHOUSE_100	m <sup>2</sup>	ft <sup>2</sup>
SUITE AREA	157,03	1690,26
BALCONY AREA	32,02	344,66
TOTAL AREA	189,05	2034,92

10 FLOOR



 covered balcony  
m<sup>2</sup> — 4,49 / 48,33 — ft<sup>2</sup>

WINDOW VIEW

MALL / MOSQUE / PARK / AVENUE  
PERSIAN GULF / CRUISE TERMINAL





PENTHOUSE_101	m <sup>2</sup>	ft <sup>2</sup>
SUITE AREA	231,44	2491,20
BALCONY AREA	57,15	615,16
TOTAL AREA	288,59	3106,35

10 FLOOR



 covered balcony  
 m<sup>2</sup> — 4,49 / 48,33 — ft<sup>2</sup>

WINDOW VIEW

PARK / PERSIAN GULF /  
 DUBAI ISLAND BEACH / DIERA MALL /  
 SOUK AL MARFA / NIGHT SOUK





# Zephyra

RESIDENCES

PENTHOUSE_102	m <sup>2</sup>	ft <sup>2</sup>
SUITE AREA	192,70	2074,20
BALCONY AREA	181,99	1958,92
TOTAL AREA	374,69	4033,13

## 10 FLOOR



 covered balcony  
 m<sup>2</sup> — 4,49 / 48,33 — ft<sup>2</sup>

## WINDOW VIEW

JUMEIRAH MOSQUE / DUBAI FRAME /  
 SOUK AL MARFA / NIGHT SOUK /  
 PERSIAN GULF / BURJ KHALIFA

