

A serene sunset scene over a body of water. The sun is low on the horizon, creating a bright, golden glow that reflects on the water's surface. The water is dark blue with gentle ripples, and a white wake from a boat is visible in the foreground. The overall mood is peaceful and luxurious.

Pier Point 2

RASHID YACHTS & MARINA

FLOOR PLAN

EMAAR

Pier Point 2

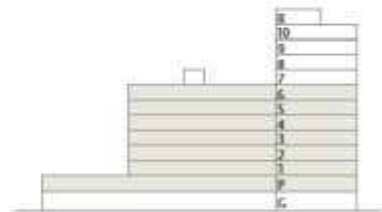
RASHID YACHTS & MARINA

1 BEDROOM

TYPE A.1
UNITS P07, 110, 210-610

| | | |
|--------------|--------------|------------|
| SUITE AREA | 736.47 SQ.FT | 68.42 SQ.M |
| BALCONY AREA | 73.95 SQ.FT | 6.87 SQ.M |
| TOTAL AREA | 810.41 SQ.FT | 75.29 SQ.M |

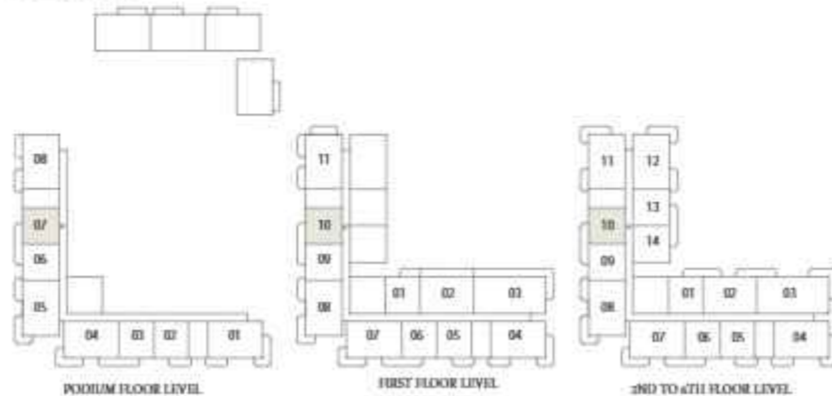
KEY SECTION



LAYOUT



KEY PLAN



FLOOR PLAN 1. All dimensions are in imperial and metric, and measured from finish to finish excluding construction tolerances. 2. All materials, dimensions, and drawings are approximate only. 3. Information is subject to change without notice, at developer's absolute discretion. 4. Actual area may vary from the stated area. 5. Drawings not to scale. 6. All images used are for illustrative purposes only and do not represent the actual size, features, specifications, fittings, and furnishings. 7. The developer reserves the right to make revisions / alterations, at it's absolute discretion, without any liability whatsoever.

Pier Point 2

RASHID YACHTS & MARINA

1 BEDROOM

TYPE A.2
UNITS P06, 109, 209-609

| | | |
|--------------|--------------|------------|
| SUITE AREA | 727.64 SQ.FT | 67.6 SQ.M |
| BALCONY AREA | 73.95 SQ.FT | 6.87 SQ.M |
| TOTAL AREA | 801.59 SQ.FT | 74.47 SQ.M |

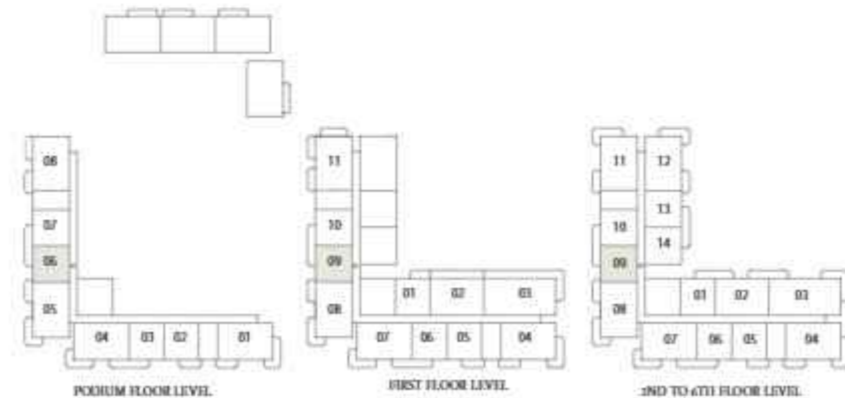
KEY SECTION



LAYOUT



KEY PLAN



FLOOR PLAN 1. All dimensions are in imperial and metric, and measured from finish to finish excluding construction tolerances. 2. All materials, dimensions, and drawings are approximate only. 3. Information is subject to change without notice, at developer's absolute discretion. 4. Actual area may vary from the stated area. 5. Drawings not to scale. 6. All images used are for illustrative purposes only and do not represent the actual size, features, specifications, fittings, and furnishings. 7. The developer reserves the right to make revisions / alterations, at it's absolute discretion, without any liability whatsoever.

Pier Point 2

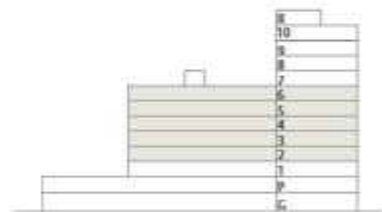
RASHID YACHTS & MARINA

1 BEDROOM

TYPE A.3
UNITS 214-614

| | | |
|--------------|--------------|------------|
| SUITE AREA | 729.69 SQ.FT | 67.79 SQ.M |
| BALCONY AREA | 73.95 SQ.FT | 6.87 SQ.M |
| TOTAL AREA | 803.63 SQ.FT | 74.66 SQ.M |

KEY SECTION



LAYOUT



KEY PLAN



FLOOR PLAN 1. All dimensions are in imperial and metric, and measured from finish to finish excluding construction tolerances. 2. All materials, dimensions, and drawings are approximate only. 3. Information is subject to change without notice, at developer's absolute discretion. 4. Actual area may vary from the stated area. 5. Drawings not to scale. 6. All images used are for illustrative purposes only and do not represent the actual size, features, specifications, fittings, and furnishings. 7. The developer reserves the right to make revisions / alterations, at it's absolute discretion, without any liability whatsoever.

Pier Point 2

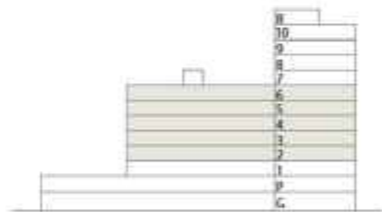
RASHID YACHTS & MARINA

1 BEDROOM

TYPE A.4
UNITS 213-613

| | | |
|--------------|--------------|------------|
| SUITE AREA | 729.69 SQ.FT | 67.79 SQ.M |
| BALCONY AREA | 73.95 SQ.FT | 6.87 SQ.M |
| TOTAL AREA | 803.63 SQ.FT | 74.66 SQ.M |

KEY SECTION



LAYOUT



KEY PLAN



END TO 6TH FLOOR LEVEL



FLOOR PLAN 1. All dimensions are in imperial and metric, and measured from finish to finish excluding construction tolerances. 2. All materials, dimensions, and drawings are approximate only. 3. Information is subject to change without notice, at developer's absolute discretion. 4. Actual area may vary from the stated area. 5. Drawings not to scale. 6. All images used are for illustrative purposes only and do not represent the actual size, features, specifications, fittings, and furnishings. 7. The developer reserves the right to make revisions / alterations, at it's absolute discretion, without any liability whatsoever.

Pier Point 2

RASHID YACHTS & MARINA

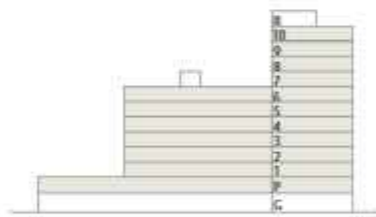
1 BEDROOM

TYPE B.1

UNITS P03, 106, 206-606, 706, 806-1006

| | | |
|--------------|---------------------|------------------|
| SUITE AREA | 698.9-699.12 SQ.FT | 64.93-64.95 SQ.M |
| BALCONY AREA | 74.7-74.81 SQ.FT | 6.94-6.95 SQ.M |
| TOTAL AREA | 773.71-773.82 SQ.FT | 71.88-71.89 SQ.M |

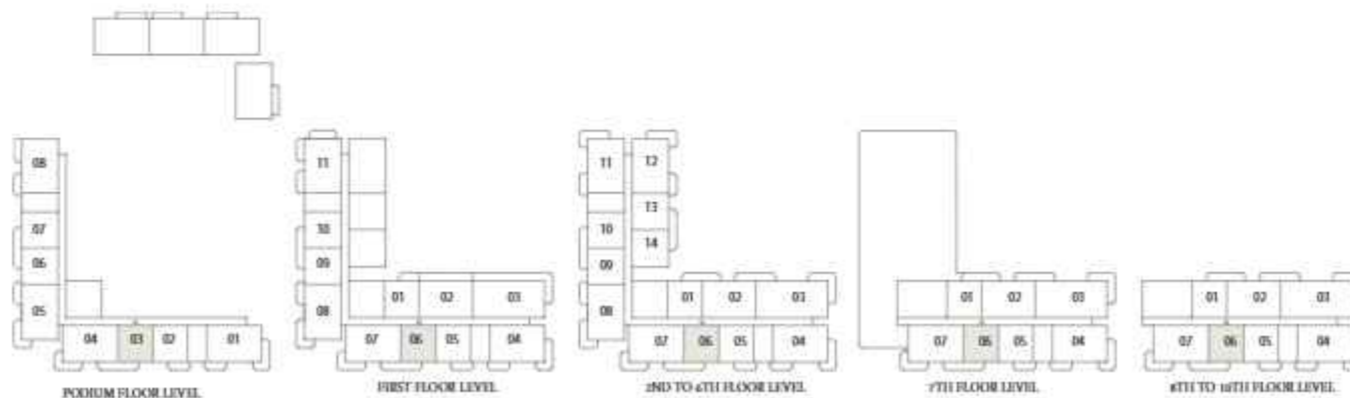
KEY SECTION



LAYOUT



KEY PLAN



FLOOR PLAN 1. All dimensions are in imperial and metric, and measured from finish to finish excluding construction tolerances. 2. All materials, dimensions, and drawings are approximate only. 3. Information is subject to change without notice, at developer's absolute discretion. 4. Actual area may vary from the stated area. 5. Drawings not to scale. 6. All images used are for illustrative purposes only and do not represent the actual size, features, specifications, fittings, and furnishings. 7. The developer reserves the right to make revisions / alterations, at it's absolute discretion, without any liability whatsoever.

Pier Point 2

RASHID YACHTS & MARINA

1 BEDROOM

TYPE B.2

UNITS P02, 105, 205-605, 705, 805-1005

| | | |
|--------------|---------------------|------------------|
| SUITE AREA | 706.97-707.19 SQ.FT | 65.68-65.70 SQ.M |
| BALCONY AREA | 72.66-72.76 SQ.FT | 6.75-6.76 SQ.M |
| TOTAL AREA | 779.74-779.85 SQ.FT | 72.44-72.45 SQ.M |

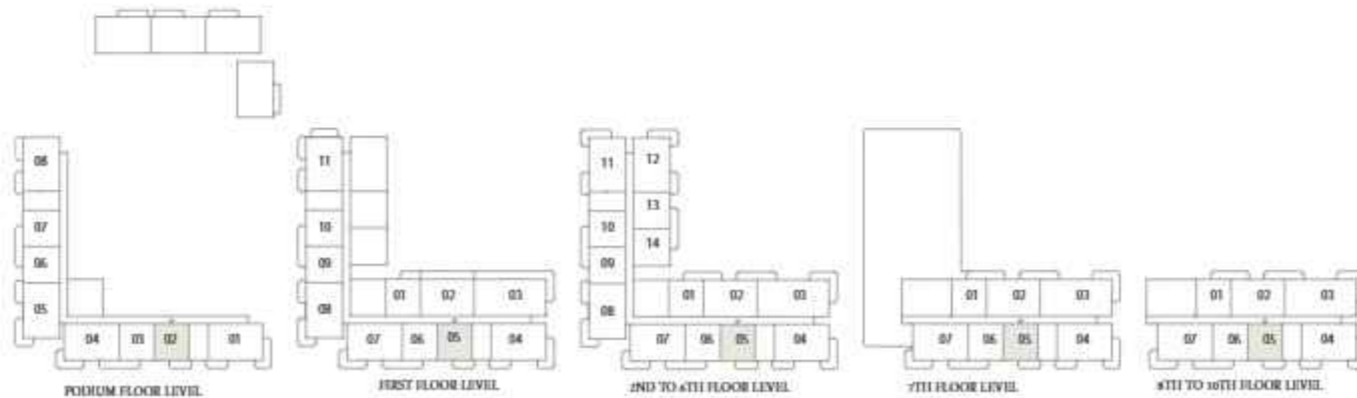
KEY SECTION



LAYOUT



KEY PLAN



FLOOR PLAN 1. All dimensions are in imperial and metric, and measured from finish to finish excluding construction tolerances. 2. All materials, dimensions, and drawings are approximate only. 3. Information is subject to change without notice, at developer's absolute discretion. 4. Actual area may vary from the stated area. 5. Drawings not to scale. 6. All images used are for illustrative purposes only and do not represent the actual size, features, specifications, fittings, and furnishings. 7. The developer reserves the right to make revisions / alterations, at it's absolute discretion, without any liability whatsoever.

Pier Point 2

RASHID YACHTS & MARINA

1 BEDROOM

TYPE B.3

UNITS 201-601, 701, 801-1001

| | | |
|--------------|--------------|------------|
| SUITE AREA | 707.73 SQ.FT | 65.75 SQ.M |
| BALCONY AREA | 72.23 SQ.FT | 6.71 SQ.M |
| TOTAL AREA | 779.95 SQ.FT | 72.46 SQ.M |

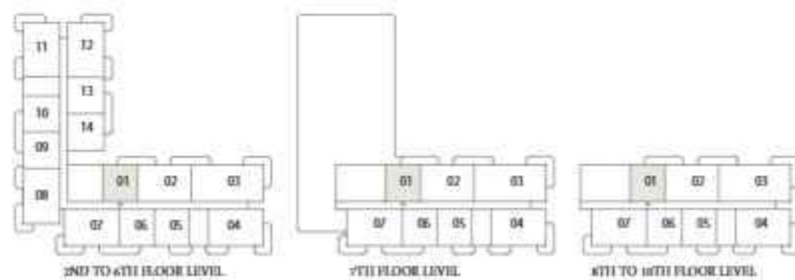
KEY SECTION



LAYOUT



KEY PLAN



FLOOR PLAN 1. All dimensions are in imperial and metric, and measured from finish to finish excluding construction tolerances. 2. All materials, dimensions, and drawings are approximate only. 3. Information is subject to change without notice, at developer's absolute discretion. 4. Actual area may vary from the stated area. 5. Drawings not to scale. 6. All images used are for illustrative purposes only and do not represent the actual size, features, specifications, fittings, and furnishings. 7. The developer reserves the right to make revisions / alterations, at it's absolute discretion, without any liability whatsoever.

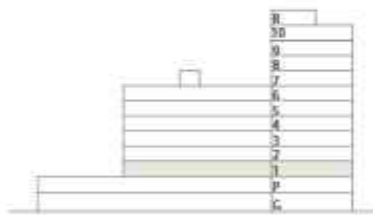
Pier Point 2

RASHID YACHTS & MARINA

1 BEDROOM TYPE B.4 UNIT 101

| | | |
|--------------|--------------|------------|
| SUITE AREA | 707.73 SQ.FT | 65.75 SQ.M |
| BALCONY AREA | 92.35 SQ.FT | 8.58 SQ.M |
| TOTAL AREA | 800.08 SQ.FT | 74.33 SQ.M |

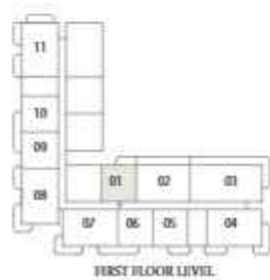
KEY SECTION



LAYOUT



KEY PLAN



FLOOR PLAN 1. All dimensions are in imperial and metric, and measured from finish to finish excluding construction tolerances. 2. All materials, dimensions, and drawings are approximate only. 3. Information is subject to change without notice, at developer's absolute discretion. 4. Actual area may vary from the stated area. 5. Drawings not to scale. 6. All images used are for illustrative purposes only and do not represent the actual size, features, specifications, fittings, and furnishings. 7. The developer reserves the right to make revisions / alterations, at it's absolute discretion, without any liability whatsoever.

Pier Point 2

RASHID YACHTS & MARINA

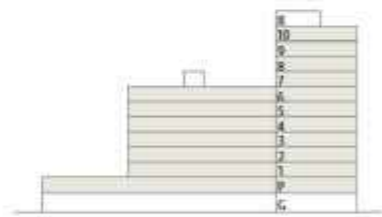
2 BEDROOM

TYPE A.1

UNITS P01, 104, 204-604, 704, 804-1004

| | | |
|--------------|-----------------------|--------------------|
| SUITE AREA | 1090.71-1091.03 SQ.FT | 101.33-101.36 SQ.M |
| BALCONY AREA | 201.39-201.50 SQ.FT | 18.71-18.72 SQ.M |
| TOTAL AREA | 1292.21-1292.42 SQ.FT | 120.05-120.07 SQ.M |

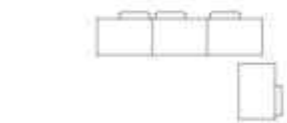
KEY SECTION



LAYOUT



KEY PLAN



FLOOR PLAN 1. All dimensions are in imperial and metric, and measured from finish to finish excluding construction tolerances. 2. All materials, dimensions, and drawings are approximate only. 3. Information is subject to change without notice, at developer's absolute discretion. 4. Actual area may vary from the stated area. 5. Drawings not to scale. 6. All images used are for illustrative purposes only and do not represent the actual size, features, specifications, fittings, and furnishings. 7. The developer reserves the right to make revisions / alterations, at it's absolute discretion, without any liability whatsoever.

Pier Point 2

RASHID YACHTS & MARINA

2 BEDROOM

TYPE A.2

UNITS P04, 107, 207-607, 707, 807-1007

| | | |
|--------------|-----------------------|--------------------|
| SUITE AREA | 1085.33-1085.65 SQ.FT | 100.83-100.86 SQ.M |
| BALCONY AREA | 199.24-199.46 SQ.FT | 18.51-18.53 SQ.M |
| TOTAL AREA | 1284.78-1284.89 SQ.FT | 119.36-119.37 SQ.M |

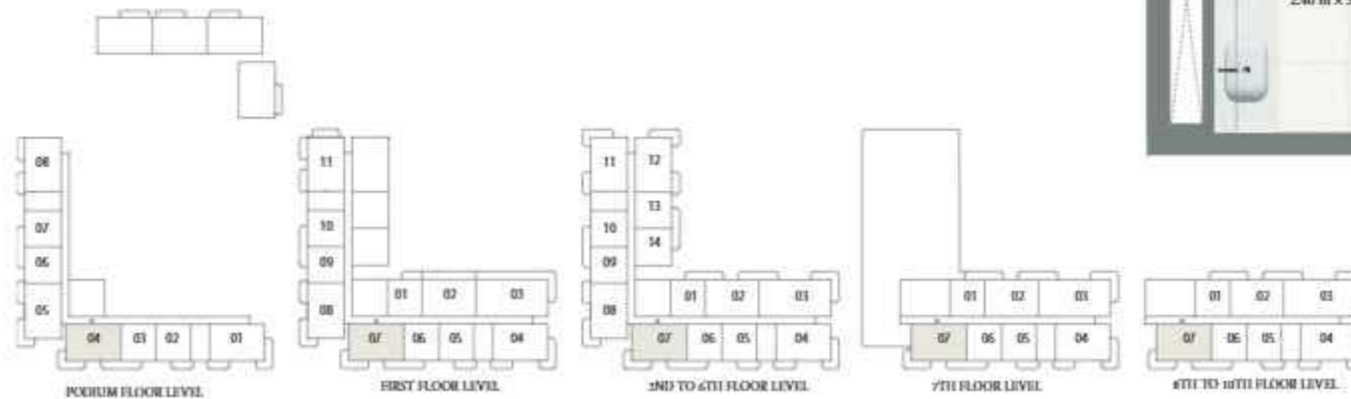
KEY SECTION



LAYOUT



KEY PLAN



FLOOR PLAN 1. All dimensions are in imperial and metric, and measured from finish to finish excluding construction tolerances. 2. All materials, dimensions, and drawings are approximate only. 3. Information is subject to change without notice, at developer's absolute discretion. 4. Actual area may vary from the stated area. 5. Drawings not to scale. 6. All images used are for illustrative purposes only and do not represent the actual size, features, specifications, fittings, and furnishings. 7. The developer reserves the right to make revisions / alterations, at its absolute discretion, without any liability whatsoever.

Pier Point 2

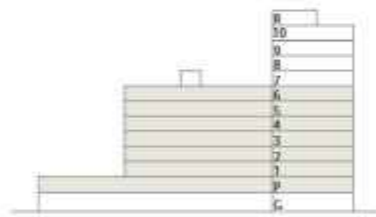
RASHID YACHTS & MARINA

2 BEDROOM

TYPE A.3
UNITS P05, 108, 208-608

| | | |
|--------------|-----------------------|--------------------|
| SUITE AREA | 1085.43-1085.54 SQ.FT | 100.84-100.85 SQ.M |
| BALCONY AREA | 197.95 SQ.FT | 18.39 SQ.M |
| TOTAL AREA | 1283.38-1283.49 SQ.FT | 119.23-119.24 SQ.M |

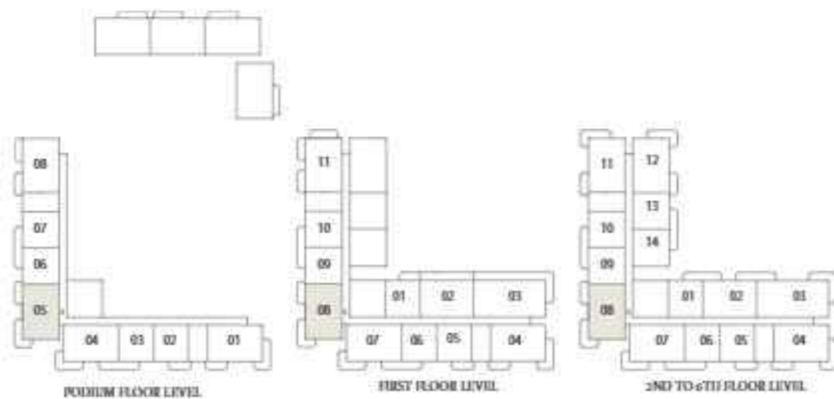
KEY SECTION



LAYOUT



KEY PLAN



FLOOR PLAN 1. All dimensions are in imperial and metric, and measured from finish to finish excluding construction tolerances. 2. All materials, dimensions, and drawings are approximate only. 3. Information is subject to change without notice, at developer's absolute discretion. 4. Actual area may vary from the stated area. 5. Drawings not to scale. 6. All images used are for illustrative purposes only and do not represent the actual size, features, specifications, fittings, and furnishings. 7. The developer reserves the right to make revisions / alterations, at it's absolute discretion, without any liability whatsoever.

Pier Point 2

RASHID YACHTS & MARINA

2 BEDROOM

TYPE B.1

UNITS 202-602, 702, 802-1002

| | | |
|--------------|-----------------------|--------------------|
| SUITE AREA | 1075.21-1075.42 SQ.FT | 99.89-99.91 SQ.M |
| BALCONY AREA | 137.46-140.04 SQ.FT | 12.77-13.01 SQ.M |
| TOTAL AREA | 1212.88-1215.25 SQ.FT | 112.68-112.90 SQ.M |

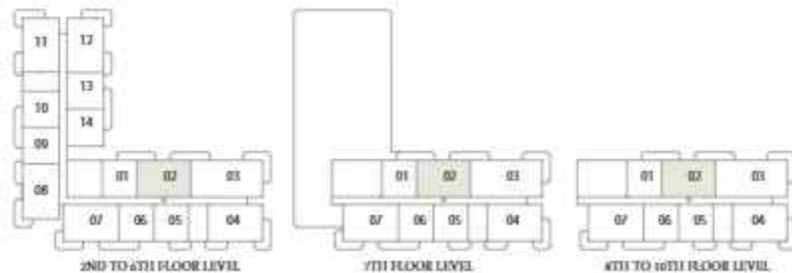
KEY SECTION



LAYOUT



KEY PLAN



FLOOR PLAN 1. All dimensions are in imperial and metric, and measured from finish to finish excluding construction tolerances. 2. All materials, dimensions, and drawings are approximate only. 3. Information is subject to change without notice, at developer's absolute discretion. 4. Actual area may vary from the stated area. 5. Drawings not to scale. 6. All images used are for illustrative purposes only and do not represent the actual size, features, specifications, fittings, and furnishings. 7. The developer reserves the right to make revisions / alterations, at it's absolute discretion, without any liability whatsoever.

Pier Point 2

RASHID YACHTS & MARINA

2 BEDROOM TYPE B.2 UNIT 102

| | | |
|--------------|---------------|-------------|
| SUITE AREA | 1075.21 SQ.FT | 99.89 SQ.M |
| BALCONY AREA | 276.96 SQ.FT | 25.73 SQ.M |
| TOTAL AREA | 1352.16 SQ.FT | 125.62 SQ.M |

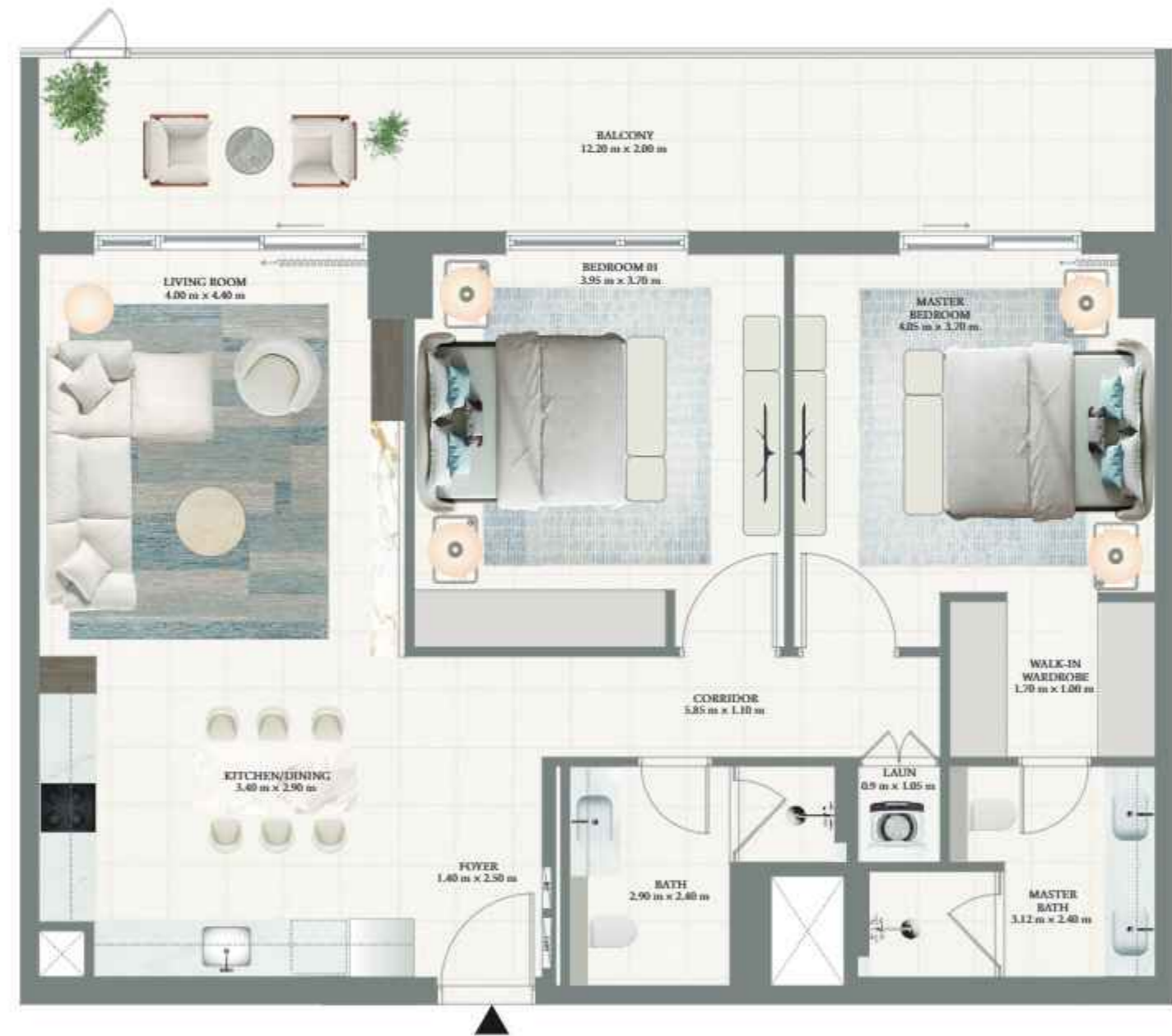
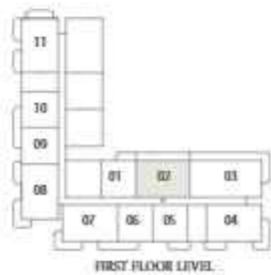
KEY SECTION



LAYOUT



KEY PLAN



FLOOR PLAN 1. All dimensions are in imperial and metric, and measured from finish to finish excluding construction tolerances. 2. All materials, dimensions, and drawings are approximate only. 3. Information is subject to change without notice, at developer's absolute discretion. 4. Actual area may vary from the stated area. 5. Drawings not to scale. 6. All images used are for illustrative purposes only and do not represent the actual size, features, specifications, fittings, and furnishings. 7. The developer reserves the right to make revisions / alterations, at it's absolute discretion, without any liability whatsoever.

Pier Point 2

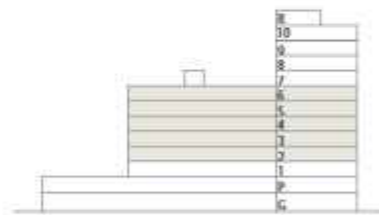
RASHID YACHTS & MARINA

2 BEDROOM

TYPE C.1
UNITS 211-611

| | | |
|--------------|---------------|-------------|
| SUITE AREA | 1086.08 SQ.FT | 100.9 SQ.M |
| BALCONY AREA | 202.36 SQ.FT | 18.80 SQ.M |
| TOTAL AREA | 1288.44 SQ.FT | 119.70 SQ.M |

KEY SECTION



LAYOUT



KEY PLAN



FLOOR PLAN 1. All dimensions are in imperial and metric, and measured from finish to finish excluding construction tolerances. 2. All materials, dimensions, and drawings are approximate only. 3. Information is subject to change without notice, at developer's absolute discretion. 4. Actual area may vary from the stated area. 5. Drawings not to scale. 6. All images used are for illustrative purposes only and do not represent the actual size, features, specifications, fittings, and furnishings. 7. The developer reserves the right to make revisions / alterations, at it's absolute discretion, without any liability whatsoever.

Pier Point 2

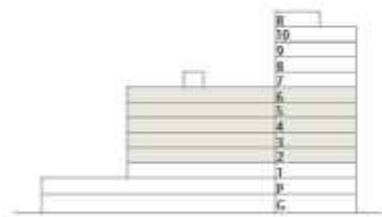
RASHID YACHTS & MARINA

2 BEDROOM

TYPE C.2
UNITS 212-612

| | | |
|--------------|---------------|-------------|
| SUITE AREA | 1077.25 SQ.FT | 100.08 SQ.M |
| BALCONY AREA | 202.36 SQ.FT | 18.80 SQ.M |
| TOTAL AREA | 1279.61 SQ.FT | 118.88 SQ.M |

KEY SECTION



LAYOUT



KEY PLAN



FLOOR PLAN 1. All dimensions are in imperial and metric, and measured from finish to finish excluding construction tolerances. 2. All materials, dimensions, and drawings are approximate only. 3. Information is subject to change without notice, at developer's absolute discretion. 4. Actual area may vary from the stated area. 5. Drawings not to scale. 6. All images used are for illustrative purposes only and do not represent the actual size, features, specifications, fittings, and furnishings. 7. The developer reserves the right to make revisions / alterations, at it's absolute discretion, without any liability whatsoever.

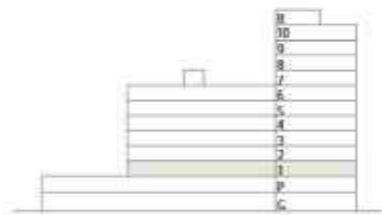
Pier Point 2

RASHID YACHTS & MARINA

2 BEDROOM TYPE C.3 UNIT 111

| | | |
|--------------|---------------|-------------|
| SUITE AREA | 1086.08 SQ.FT | 100.9 SQ.M |
| BALCONY AREA | 286.75 SQ.FT | 26.64 SQ.M |
| TOTAL AREA | 1372.83 SQ.FT | 127.54 SQ.M |

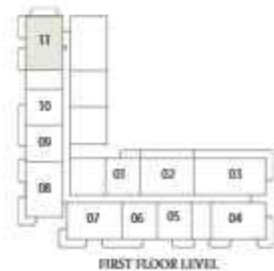
KEY SECTION



LAYOUT



KEY PLAN



FLOOR PLAN 1. All dimensions are in imperial and metric, and measured from finish to finish excluding construction tolerances. 2. All materials, dimensions, and drawings are approximate only. 3. Information is subject to change without notice, at developer's absolute discretion. 4. Actual area may vary from the stated area. 5. Drawings not to scale. 6. All images used are for illustrative purposes only and do not represent the actual size, features, specifications, fittings, and furnishings. 7. The developer reserves the right to make revisions / alterations, at it's absolute discretion, without any liability whatsoever.

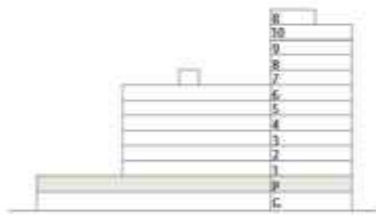
Pier Point 2

RASHID YACHTS & MARINA

2 BEDROOM TYPE C.4 UNIT P08

| | | |
|--------------|---------------|-------------|
| SUITE AREA | 1086.08 SQ.FT | 100.9 SQ.M |
| BALCONY AREA | 144.56 SQ.FT | 13.43 SQ.M |
| TOTAL AREA | 1230.64 SQ.FT | 114.33 SQ.M |

KEY SECTION



LAYOUT



KEY PLAN



FLOOR PLAN 1. All dimensions are in imperial and metric, and measured from finish to finish excluding construction tolerances. 2. All materials, dimensions, and drawings are approximate only. 3. Information is subject to change without notice, at developer's absolute discretion. 4. Actual area may vary from the stated area. 5. Drawings not to scale. 6. All images used are for illustrative purposes only and do not represent the actual size, features, specifications, fittings, and furnishings. 7. The developer reserves the right to make revisions / alterations, at it's absolute discretion, without any liability whatsoever.

Pier Point 2

RASHID YACHTS & MARINA

3 BEDROOM

TYPE A.1
UNITS 203-603, 703, 803-1003

SUITE AREA 1423.53-1423.74 SQ.FT 132.25-132.27 SQ.M

BALCONY AREA 245.63-248.22 SQ.FT 22.82-23.06 SQ.M

TOTAL AREA 1669.37-1671.74 SQ.FT 155.09-155.31 SQ.M

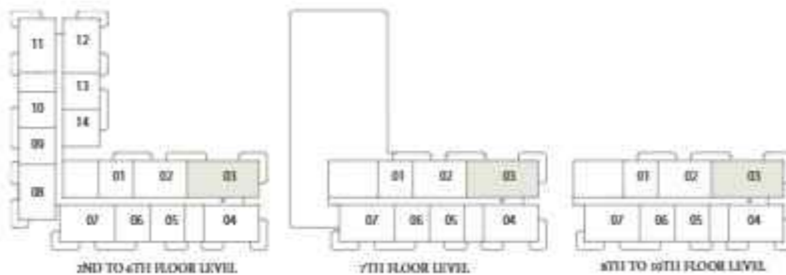
KEY SECTION



LAYOUT



KEY PLAN



FLOOR PLAN 1. All dimensions are in imperial and metric, and measured from finish to finish excluding construction tolerances. 2. All materials, dimensions, and drawings are approximate only. 3. Information is subject to change without notice, at developer's absolute discretion. 4. Actual area may vary from the stated area. 5. Drawings not to scale. 6. All images used are for illustrative purposes only and do not represent the actual size, features, specifications, fittings, and furnishings. 7. The developer reserves the right to make revisions / alterations, at it's absolute discretion, without any liability whatsoever.

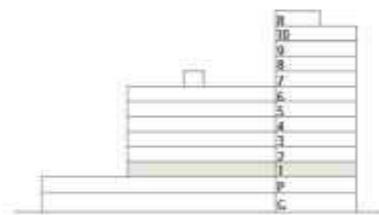
Pier Point 2

RASHID YACHTS & MARINA

3 BEDROOM TYPE A.2 UNIT 103

| | | |
|--------------|---------------|-------------|
| SUITE AREA | 1423.74 SQ.FT | 132.27 SQ.M |
| BALCONY AREA | 483.51 SQ.FT | 44.92 SQ.M |
| TOTAL AREA | 1907.26 SQ.FT | 177.19 SQ.M |

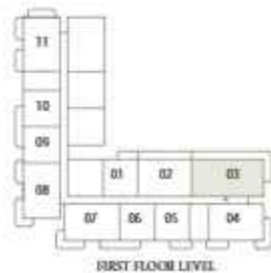
KEY SECTION



LAYOUT



KEY PLAN



FLOOR PLAN 1. All dimensions are in imperial and metric, and measured from finish to finish excluding construction tolerances. 2. All materials, dimensions, and drawings are approximate only. 3. Information is subject to change without notice, at developer's absolute discretion. 4. Actual area may vary from the stated area. 5. Drawings not to scale. 6. All images used are for illustrative purposes only and do not represent the actual size, features, specifications, fittings, and furnishings. 7. The developer reserves the right to make revisions / alterations, at its absolute discretion, without any liability whatsoever.