



# PLAYA DEL SOL

FLOOR PLAN

# GROUND FLOOR TYPICAL PLAN

 THE VILLA  
(LOWER LEVEL)



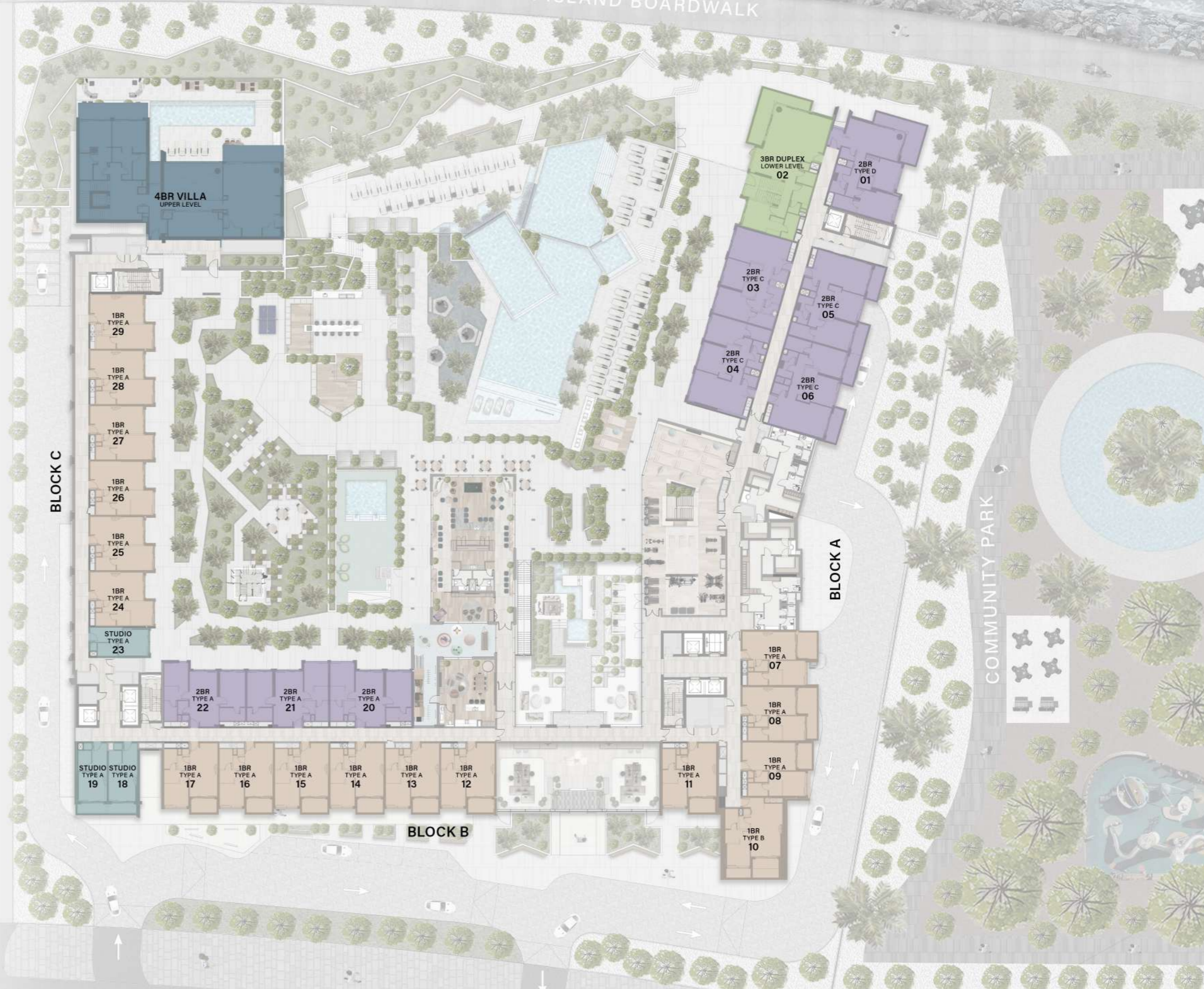
GROUND FLOOR



AL MARJAN ISLAND BOARDWALK

# 1<sup>ST</sup> FLOOR TYPICAL PLAN

-  STUDIO
-  1-BEDROOM
-  2-BEDROOM
-  3-BEDROOM  
DUPLEX  
(LOWER LEVEL)
-  THE VILLA  
(UPPER LEVEL)



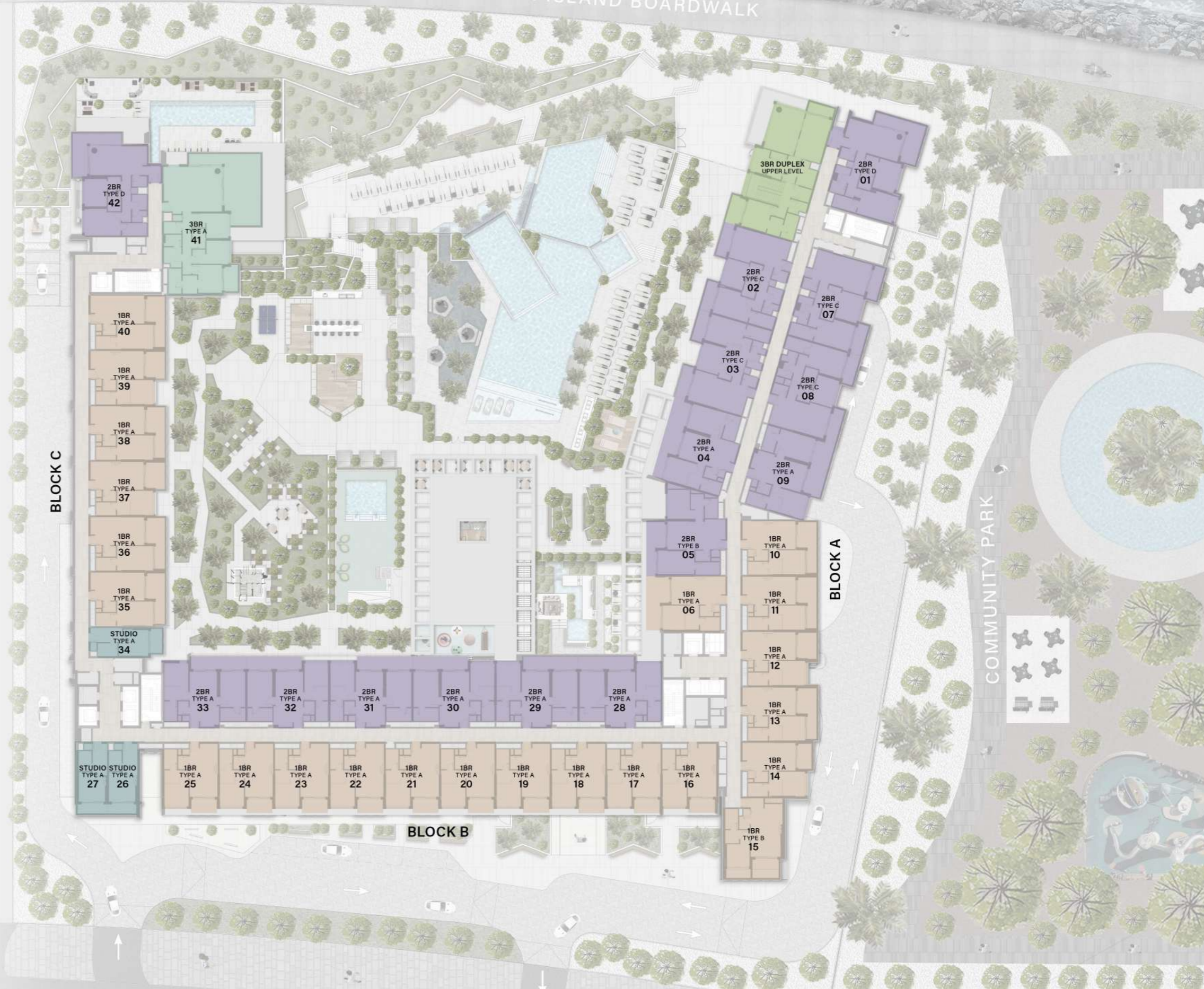
— 1<sup>ST</sup> FLOOR



AL MARJAN ISLAND BOARDWALK

### 2<sup>ND</sup> FLOOR TYPICAL PLAN

-  STUDIO
-  1-BEDROOM
-  2-BEDROOM
-  3-BEDROOM
-  3-BEDROOM  
DUPLEX  
(UPPER LEVEL)



BLOCK C

BLOCK A

BLOCK B

COMMUNITY PARK







— 2<sup>ND</sup> FLOOR

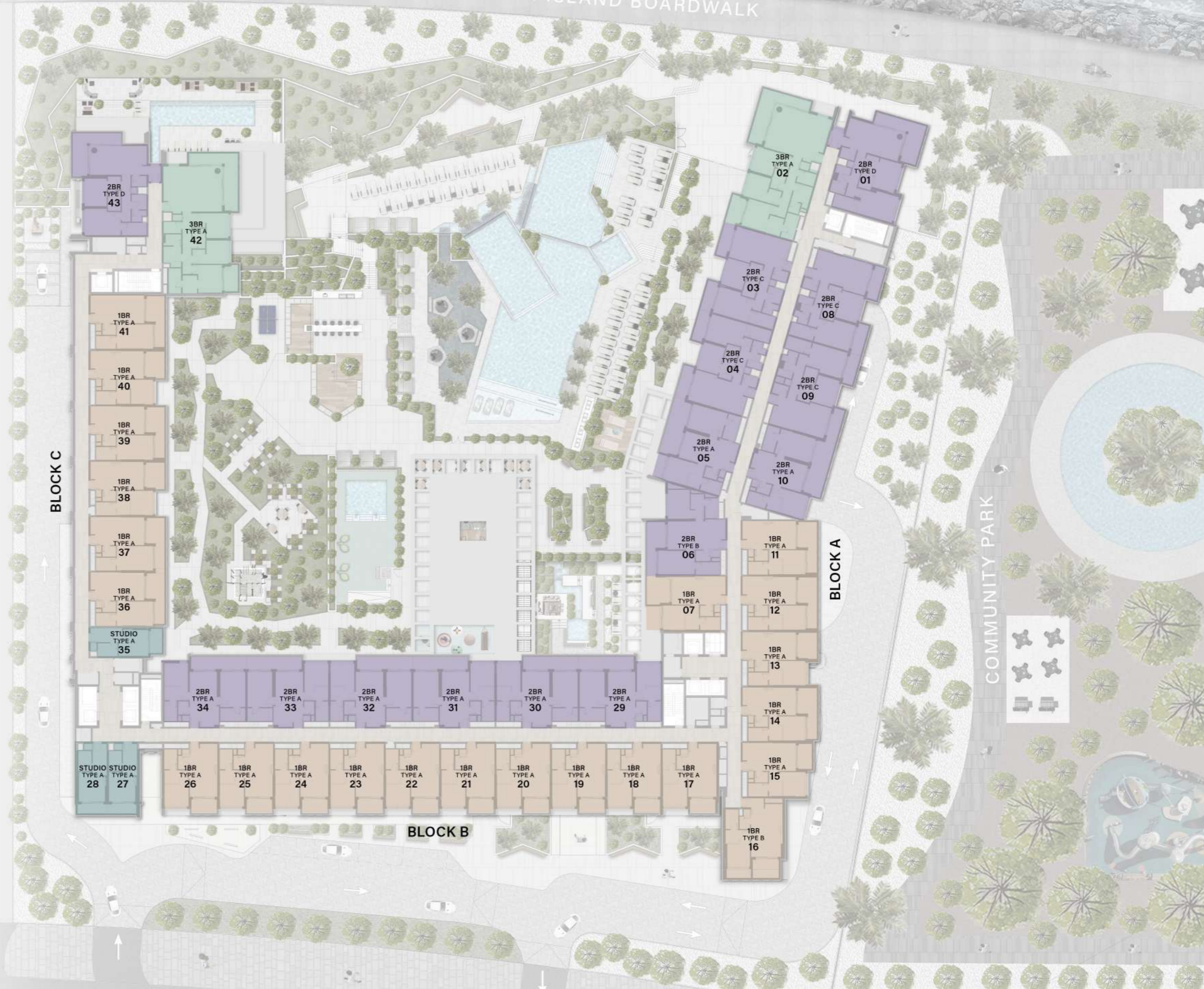


PLAYA DEL SOL JETTY

AL MARJAN ISLAND BOARDWALK

### 3<sup>RD</sup> - 9<sup>TH</sup> FLOOR TYPICAL PLAN

-  STUDIO
-  1-BEDROOM
-  2-BEDROOM
-  3-BEDROOM



BLOCK C

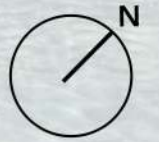
BLOCK A

BLOCK B

COMMUNITY PARK



3<sup>RD</sup> & 9<sup>TH</sup> FLOOR

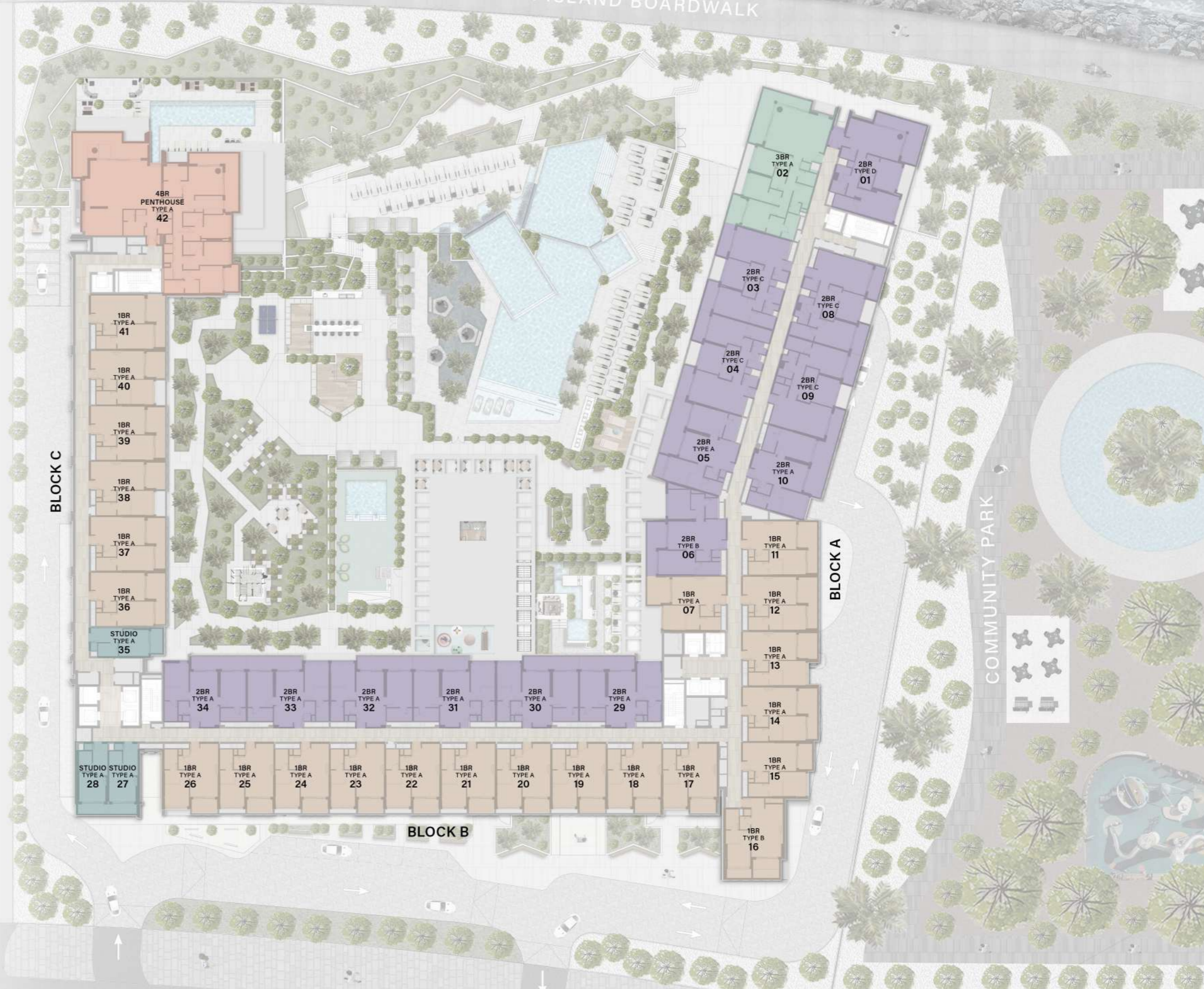


PLAYA DEL SOL JETTY

AL MARJAN ISLAND BOARDWALK

### 10<sup>TH</sup> FLOOR TYPICAL PLAN





-  STUDIO
-  1-BEDROOM
-  2-BEDROOM
-  3-BEDROOM
-  4-BEDROOM PENTHOUSE



10<sup>TH</sup> FLOOR



### 11<sup>TH</sup> - 12<sup>TH</sup> FLOOR TYPICAL PLAN

-  STUDIO
-  1-BEDROOM
-  2-BEDROOM
-  3-BEDROOM

BLOCK C

BLOCK A

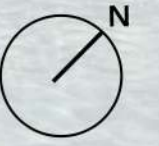
BLOCK B

COMMUNITY PARK

- STUDIO TYPE A 28
- STUDIO TYPE A 27
- 1BR TYPE A 26
- 1BR TYPE A 25
- 1BR TYPE A 24
- 1BR TYPE A 23
- 1BR TYPE A 22
- 1BR TYPE A 21
- 1BR TYPE A 20
- 1BR TYPE A 19
- 1BR TYPE A 18
- 1BR TYPE A 17
- 1BR TYPE A 15
- 1BR TYPE A 16
- 1BR TYPE A 14
- 1BR TYPE A 13
- 1BR TYPE A 12
- 1BR TYPE A 11
- 2BR TYPE B 06
- 1BR TYPE A 07
- 2BR TYPE A 05
- 2BR TYPE C 04
- 2BR TYPE C 03
- 2BR TYPE A 02
- 2BR TYPE A 01
- 2BR TYPE C 08
- 2BR TYPE C 09
- 2BR TYPE A 10
- 2BR TYPE A 34
- 2BR TYPE A 33
- 2BR TYPE A 32
- 2BR TYPE A 31
- 2BR TYPE A 30
- 2BR TYPE A 29



— 11<sup>TH</sup> & 12<sup>TH</sup> FLOOR



AL MARJAN ISLAND BOARDWALK

### 13<sup>TH</sup> FLOOR TYPICAL PLAN

-  1-BEDROOM
-  2-BEDROOM
-  3-BEDROOM



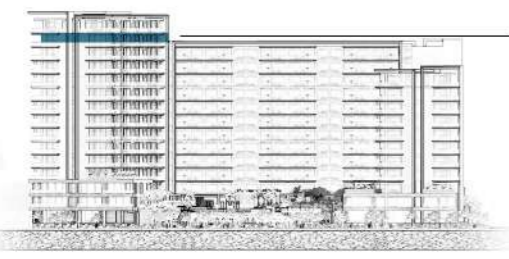
BLOCK C

BLOCK A

BLOCK B

COMMUNITY PARK

13TH FLOOR







AL MARJAN ISLAND BOARDWALK

### 14<sup>TH</sup> FLOOR TYPICAL PLAN

-  1-BEDROOM
-  2-BEDROOM
-  4-BEDROOM PENTHOUSE



BLOCK C

BLOCK A

BLOCK B

COMMUNITY PARK



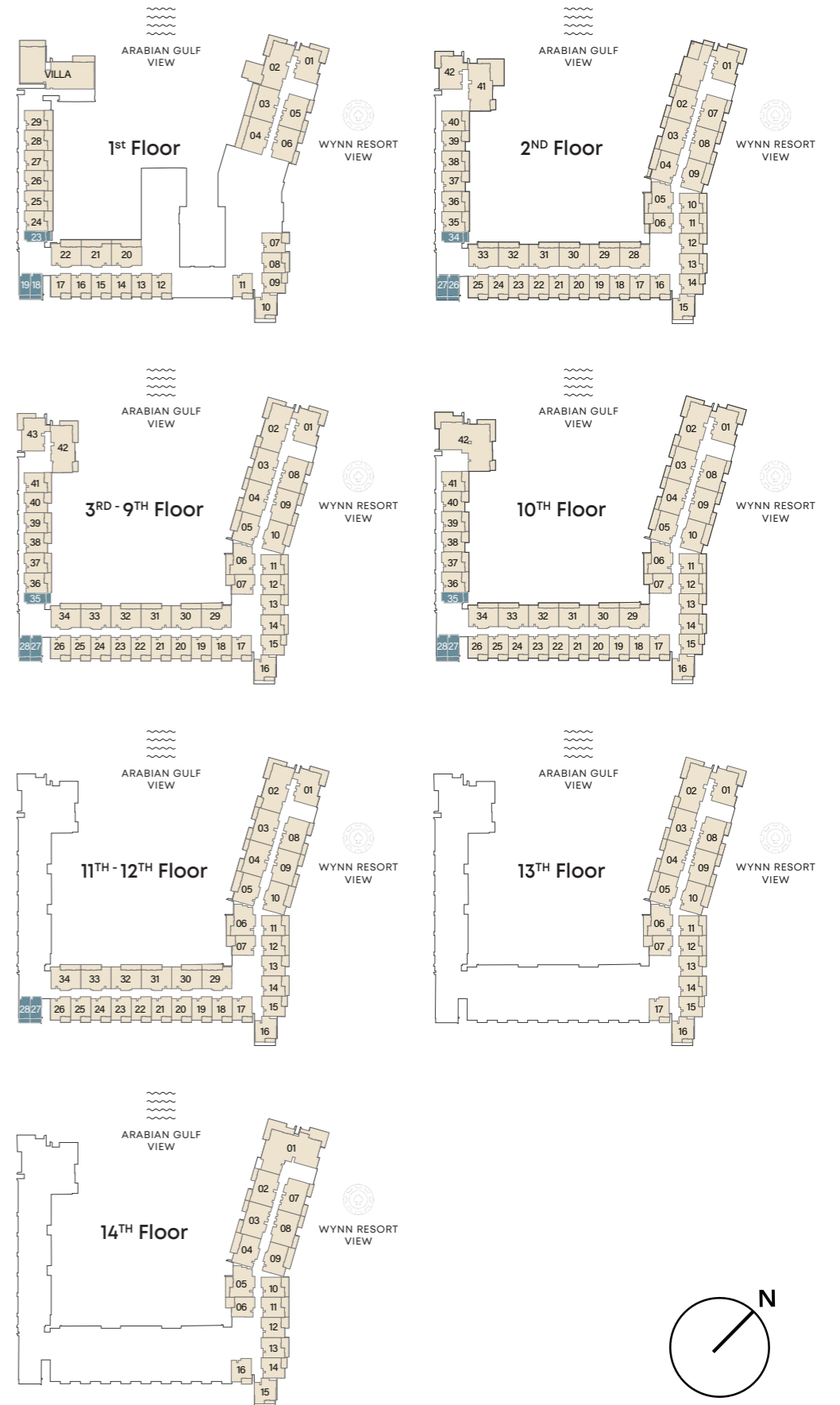
14TH FLOOR

# STUDIO

## TYPE A



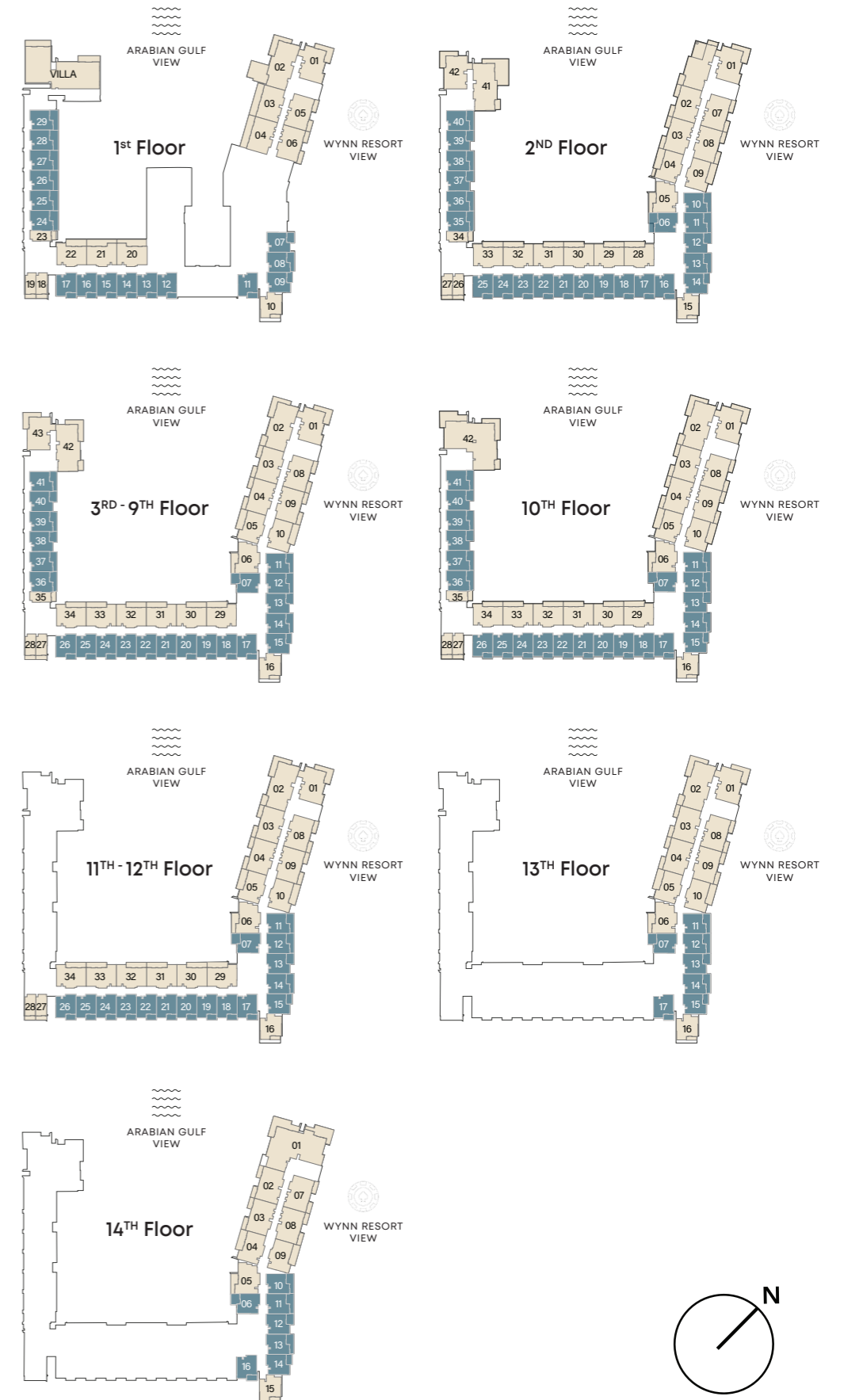
INTERNAL LIVING AREA	339.82 SQ. FT
OUTDOOR LIVING AREA	70.72 SQ. FT
<b>TOTAL LIVING AREA</b>	<b>410.54 SQ. FT</b>



# 1-BEDROOM TYPE A

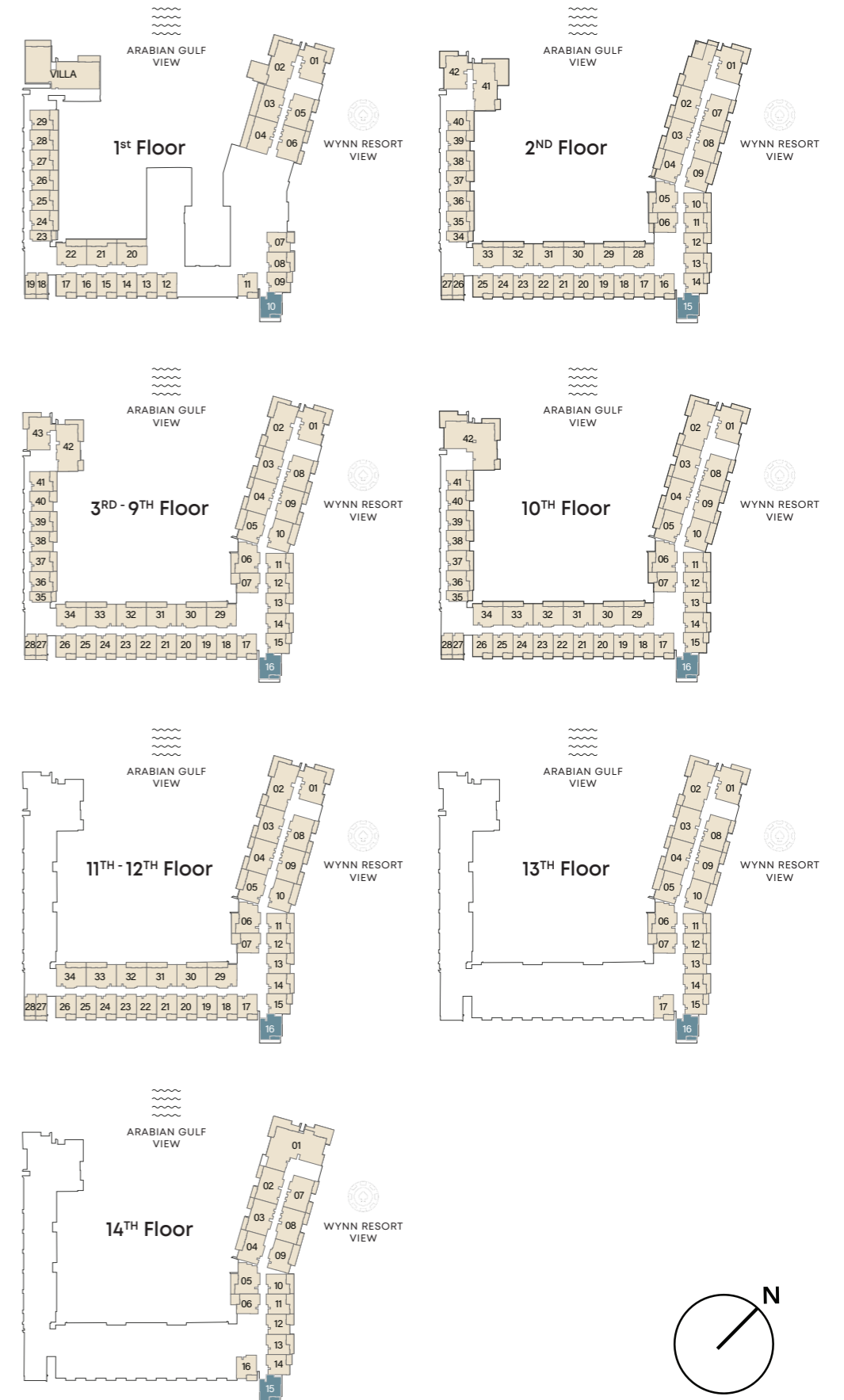


INTERNAL LIVING AREA	614.73 SQ. FT
OUTDOOR LIVING AREA	87.94 SQ. FT
<b>TOTAL LIVING AREA</b>	<b>702.67 SQ. FT</b>



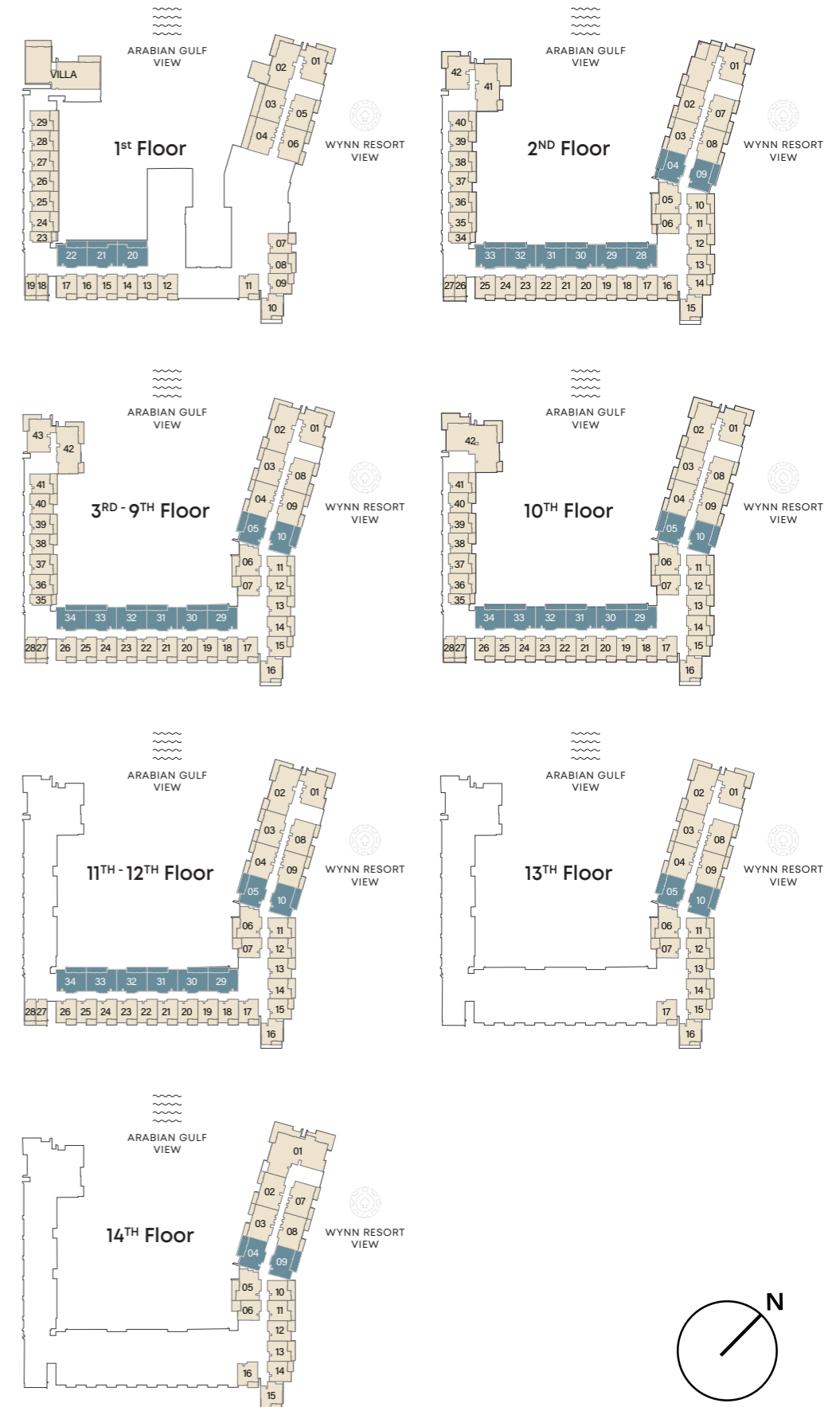
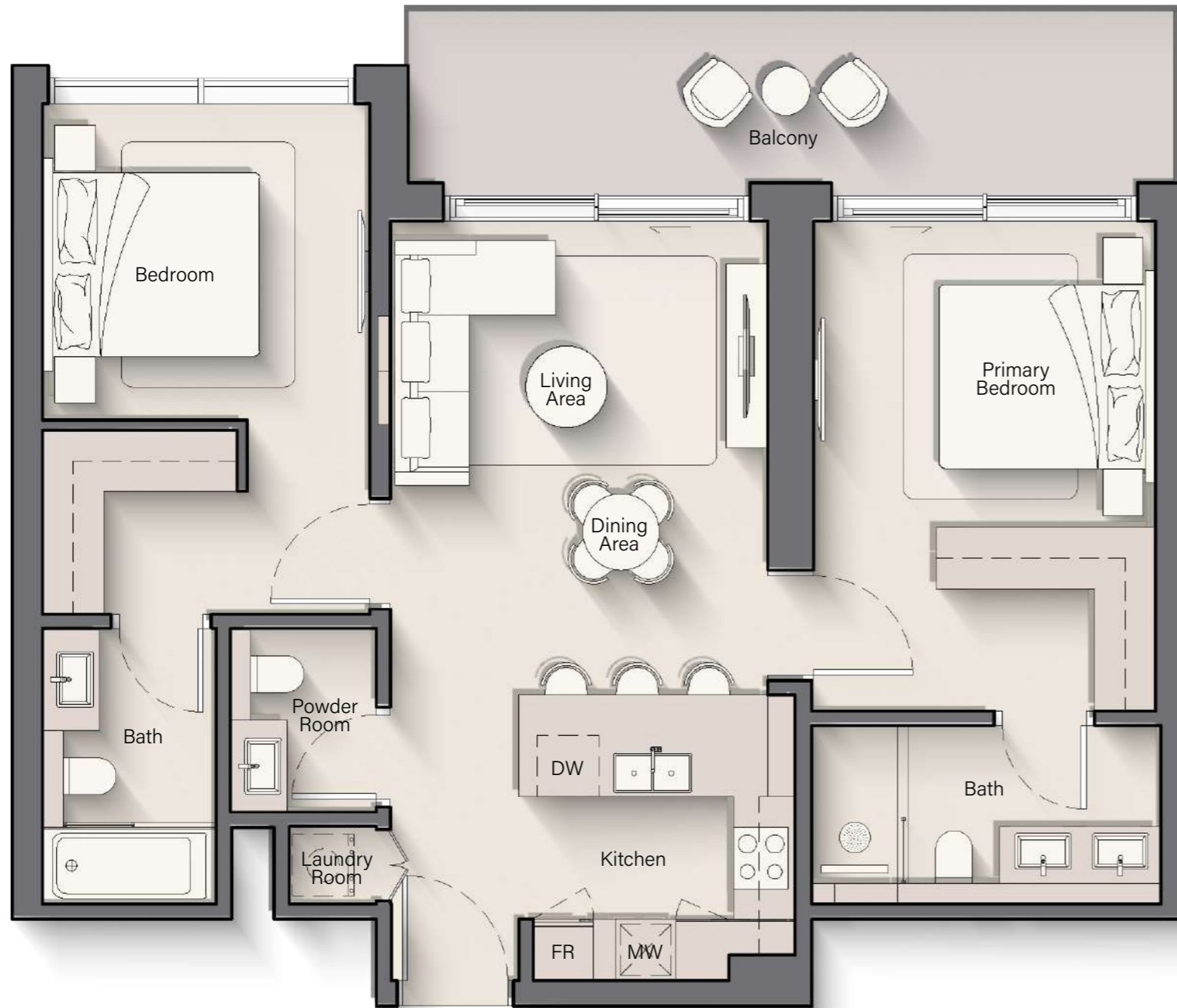
# 1-BEDROOM TYPE B

INTERNAL LIVING AREA	688.24 SQ. FT
OUTDOOR LIVING AREA	70.61 SQ. FT
<b>TOTAL LIVING AREA</b>	<b>758.86 SQ. FT</b>



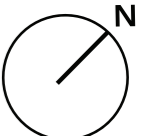
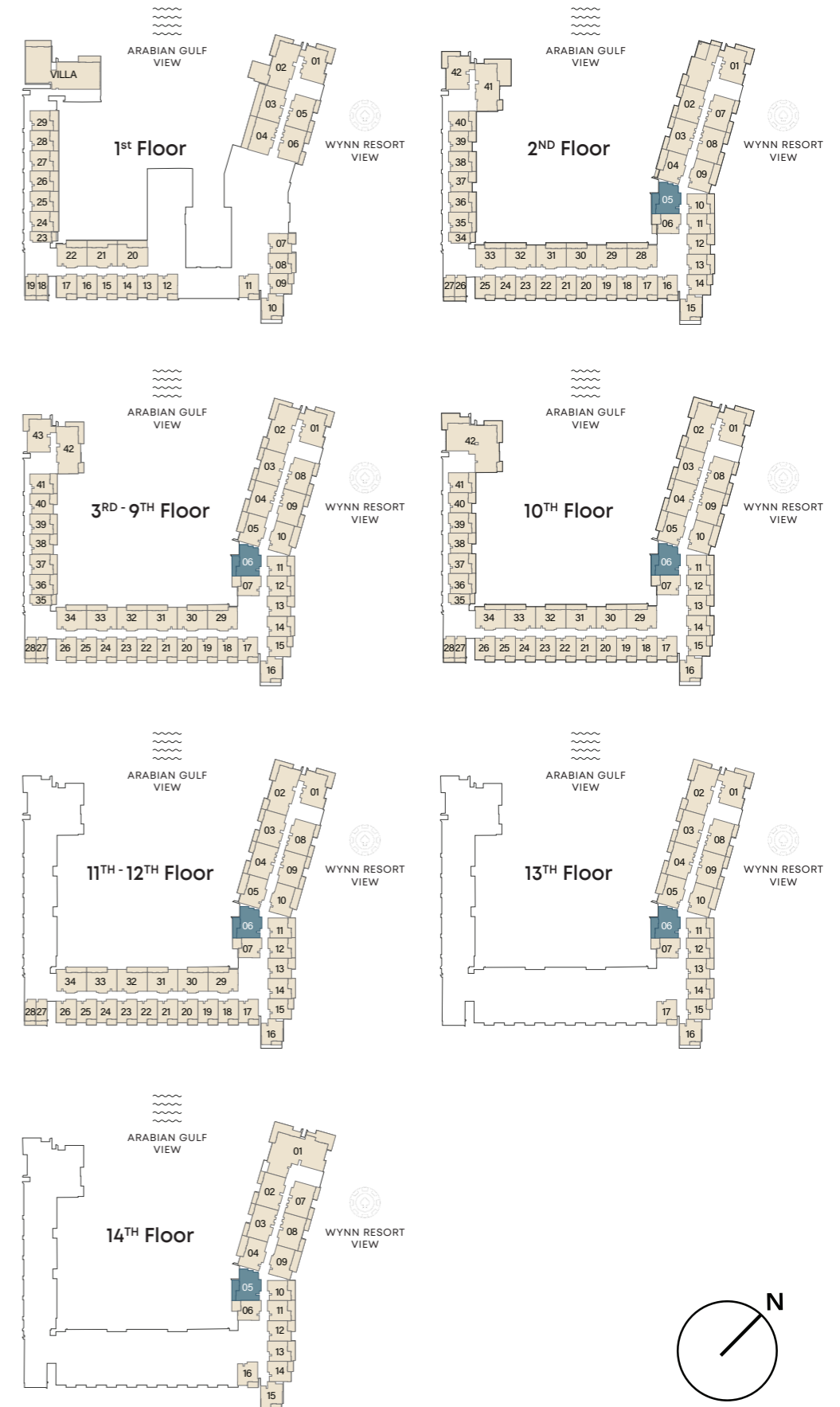
# 2-BEDROOM TYPE A

INTERNAL LIVING AREA	905.68 SQ. FT
OUTDOOR LIVING AREA	168.24 SQ. FT
<b>TOTAL LIVING AREA</b>	<b>1073.92 SQ. FT</b>



# 2-BEDROOM TYPE B

INTERNAL LIVING AREA	939.47 SQ. FT
OUTDOOR LIVING AREA	180.73 SQ. FT
<b>TOTAL LIVING AREA</b>	<b>1120.20 SQ. FT</b>

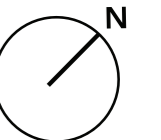
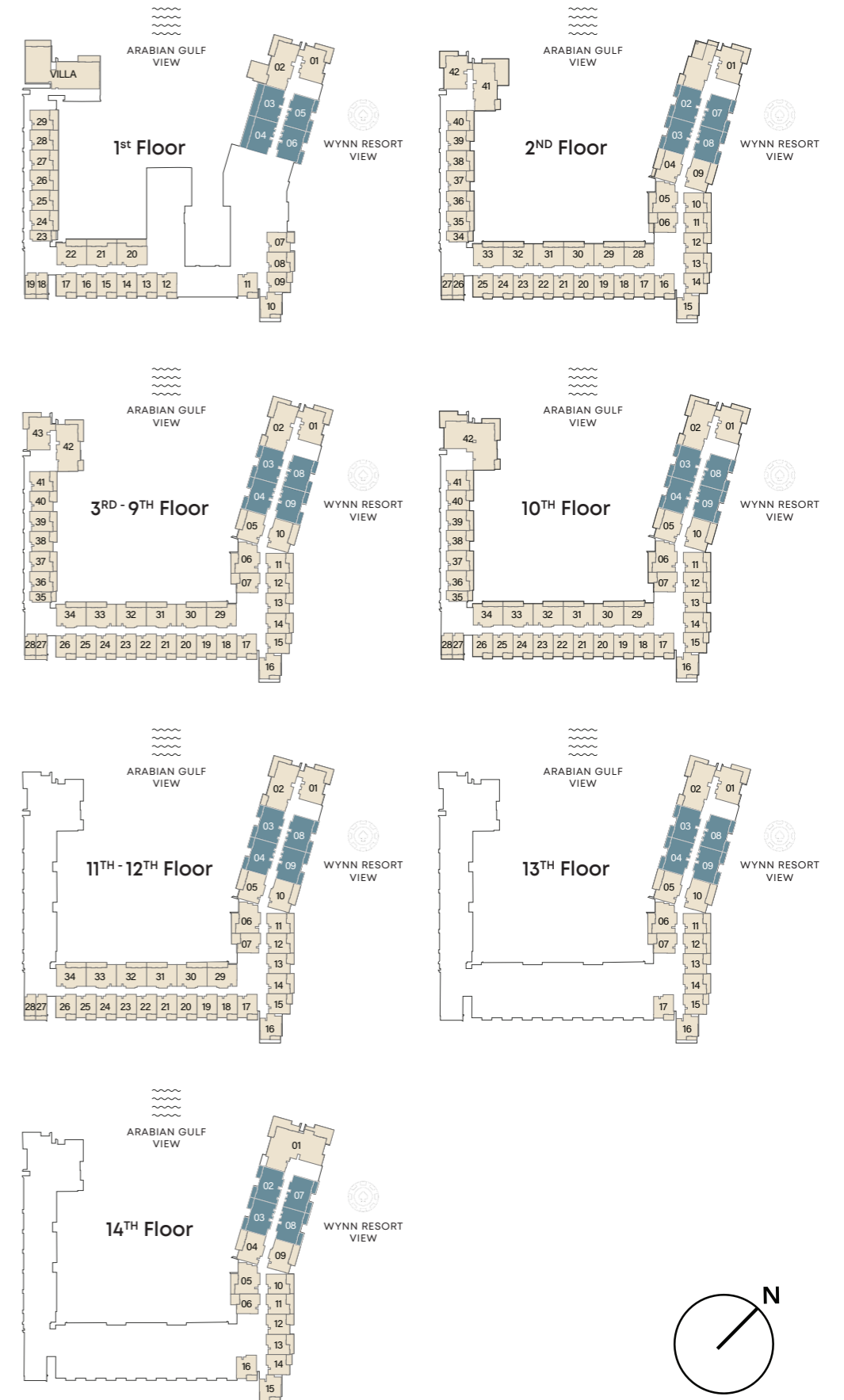


# 2-BEDROOM

## TYPE C



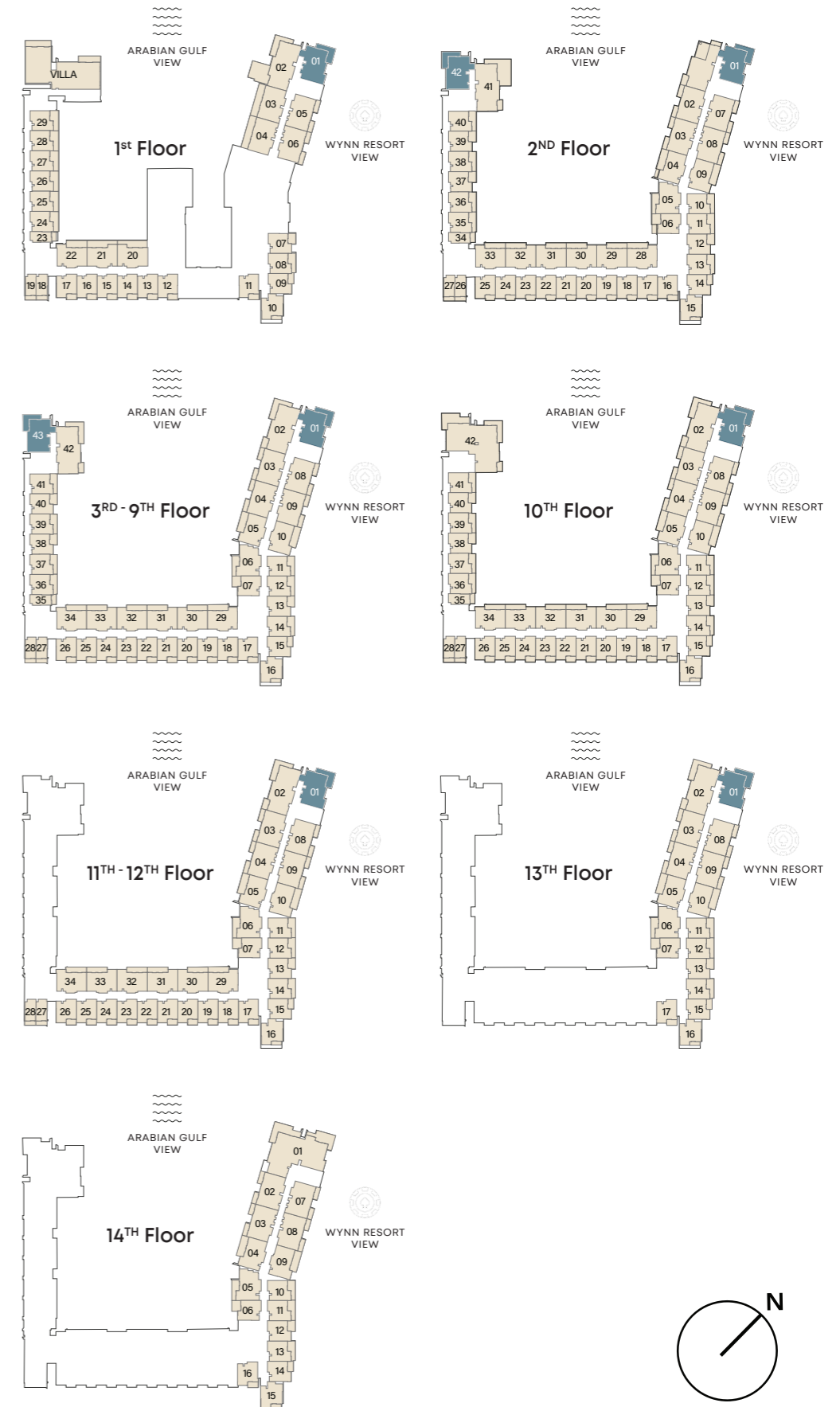
INTERNAL LIVING AREA	1083.28 SQ. FT
OUTDOOR LIVING AREA	167.27 SQ. FT
<b>TOTAL LIVING AREA</b>	<b>1250.55 SQ. FT</b>



# 2-BEDROOM

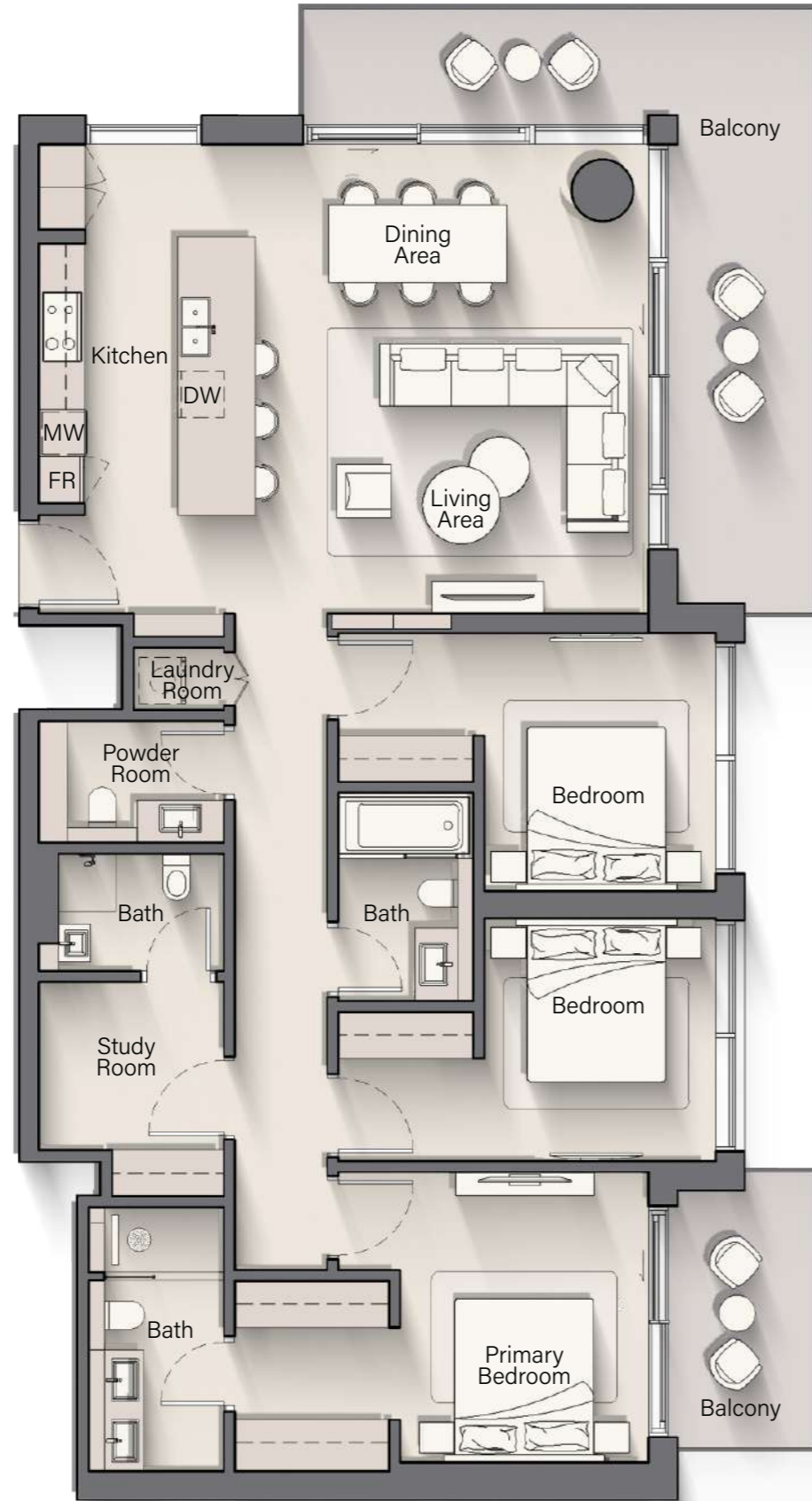
## TYPE D

INTERNAL LIVING AREA	1143.88 SQ. FT
OUTDOOR LIVING AREA	237.88 SQ. FT
<b>TOTAL LIVING AREA</b>	<b>1381.76 SQ. FT</b>

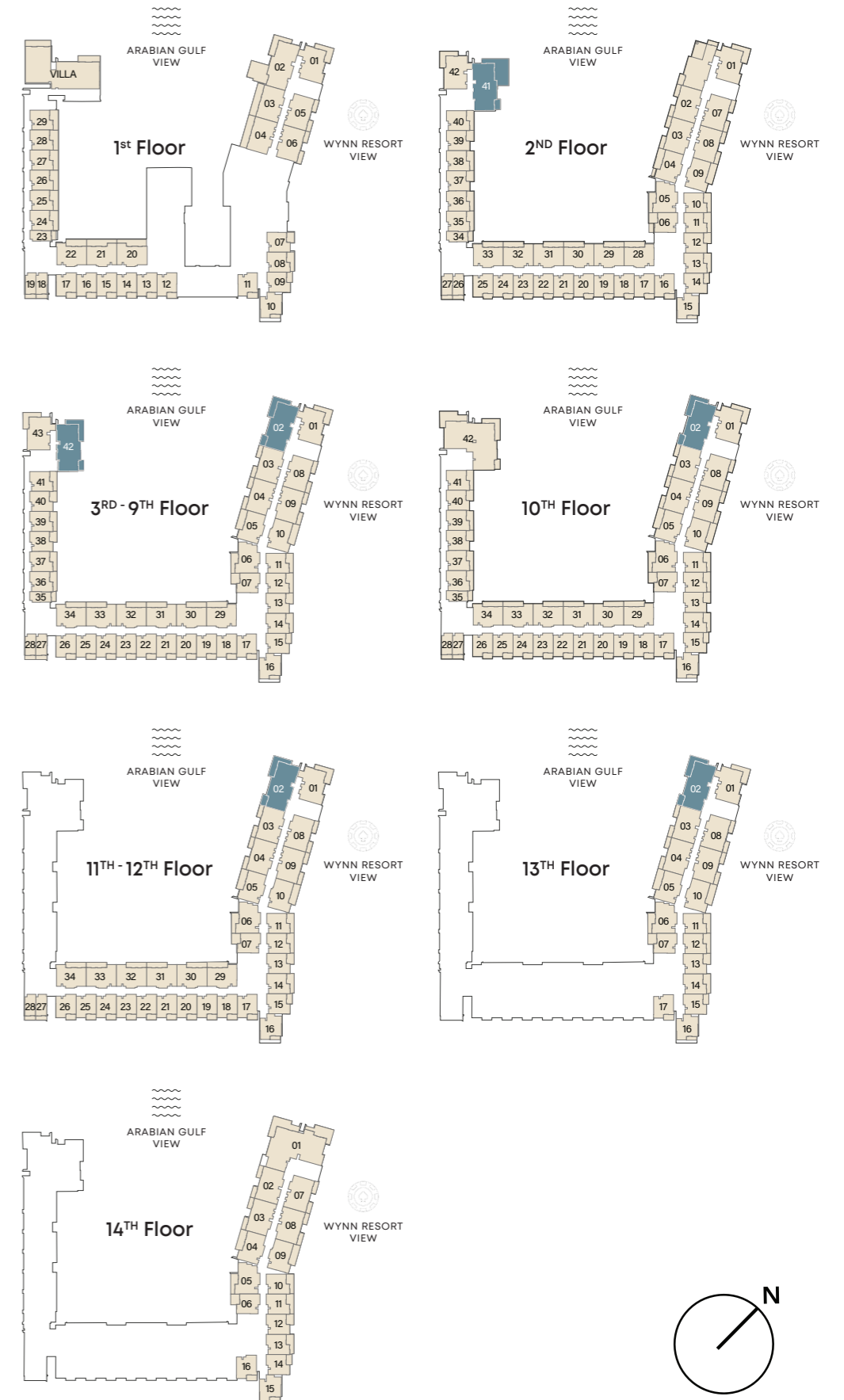




# 3-BEDROOM TYPE A



INTERNAL LIVING AREA	1549.57 SQ. FT
OUTDOOR LIVING AREA	356.93 SQ. FT
<b>TOTAL LIVING AREA</b>	<b>1906.50 SQ. FT</b>

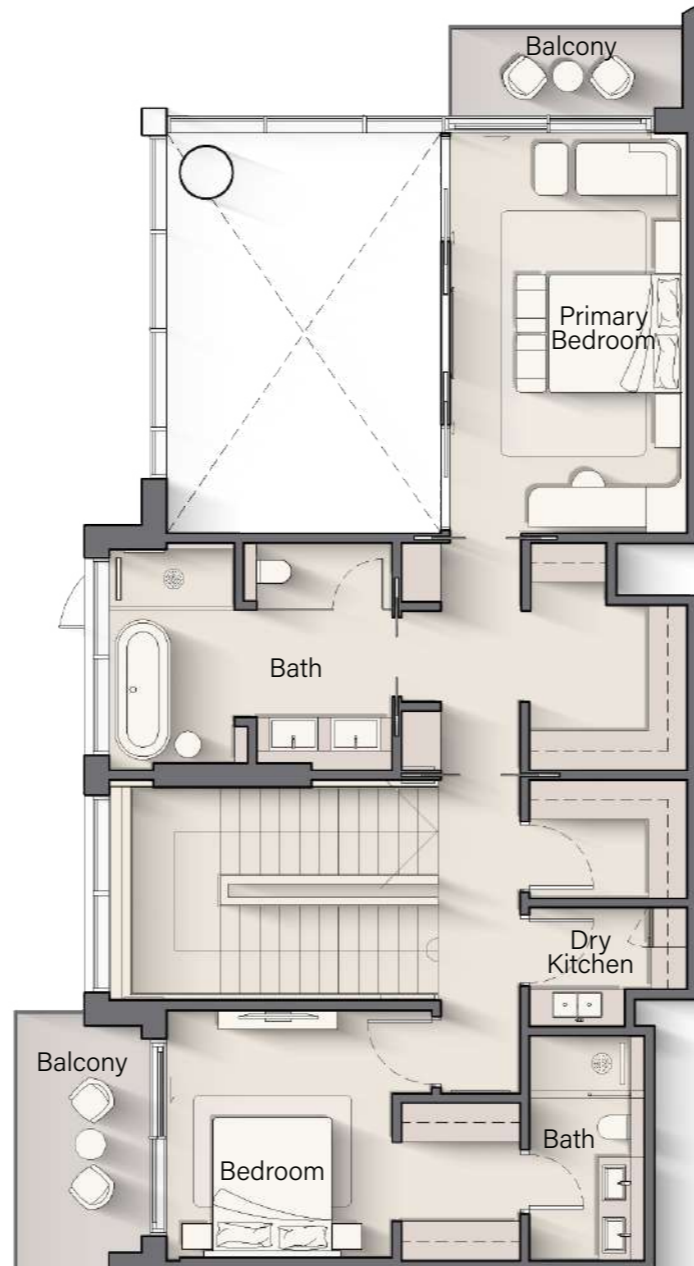


# 3-BEDROOM DUPLEX

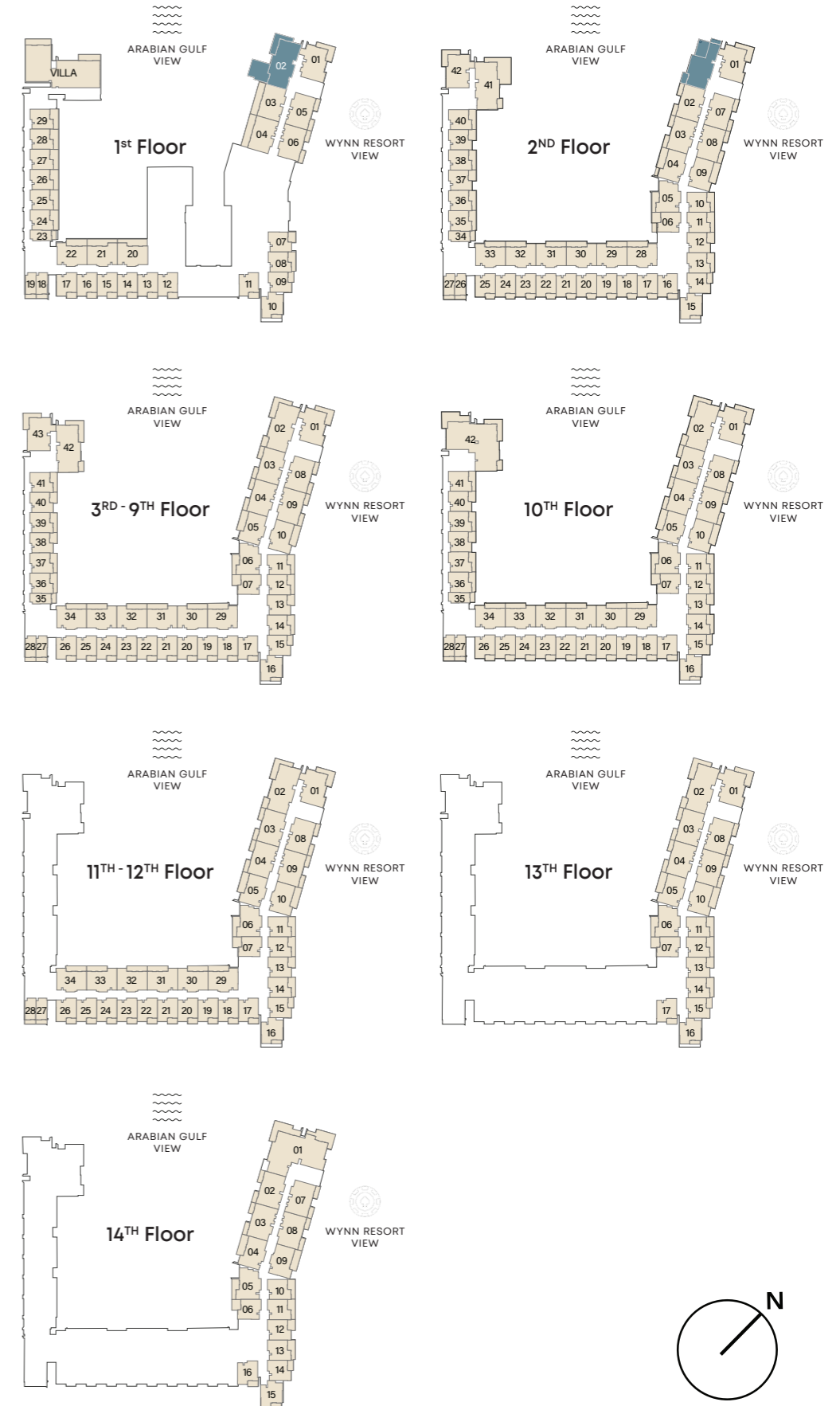
INTERNAL LIVING AREA	2821.22 SQ. FT
OUTDOOR LIVING AREA	957.34 SQ. FT
<b>TOTAL LIVING AREA</b>	<b>3778.56 SQ. FT</b>



LOWER LEVEL



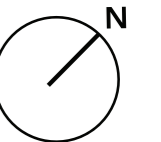
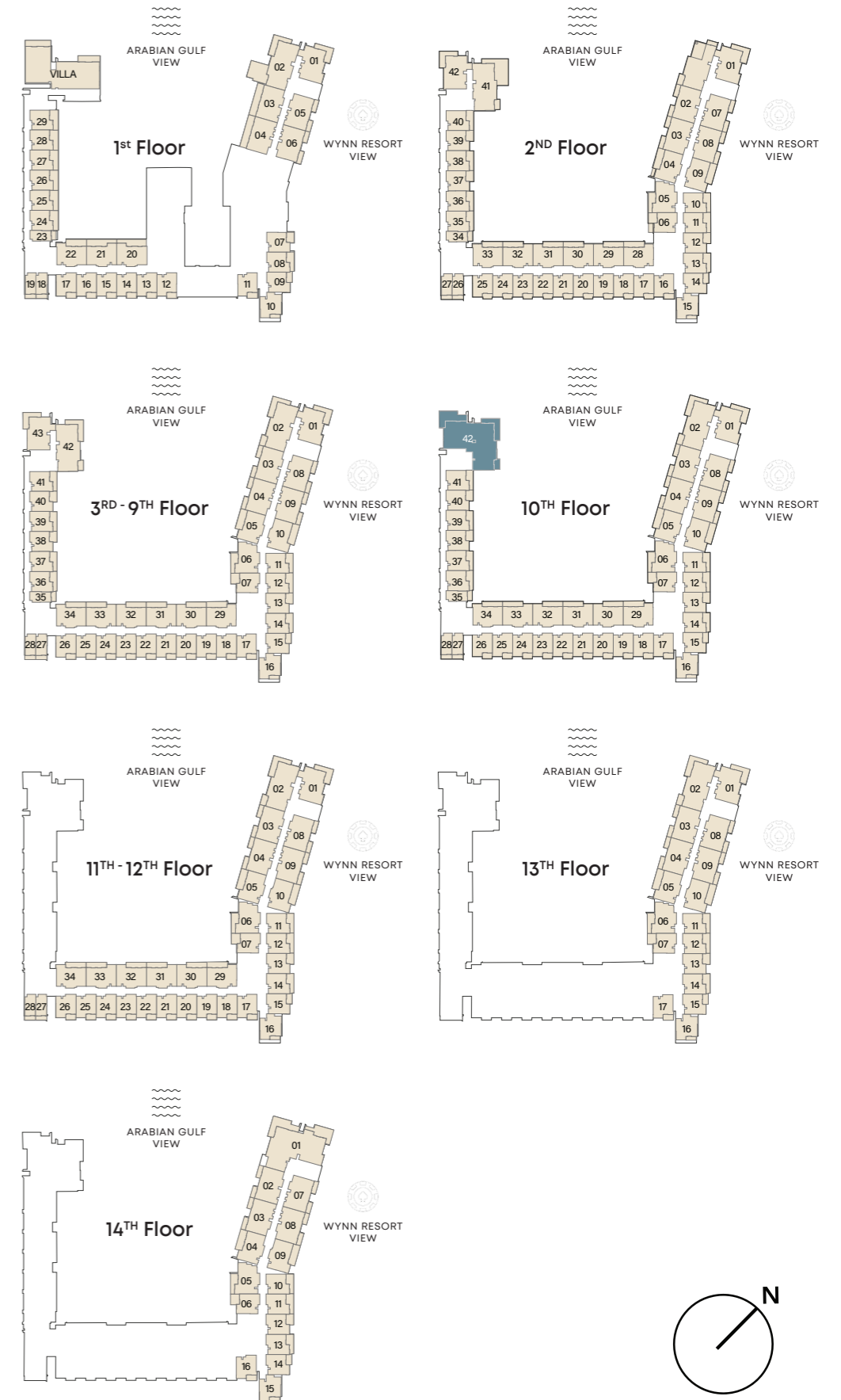
UPPER LEVEL



# PENTHOUSE

## TYPE A

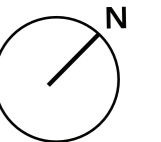
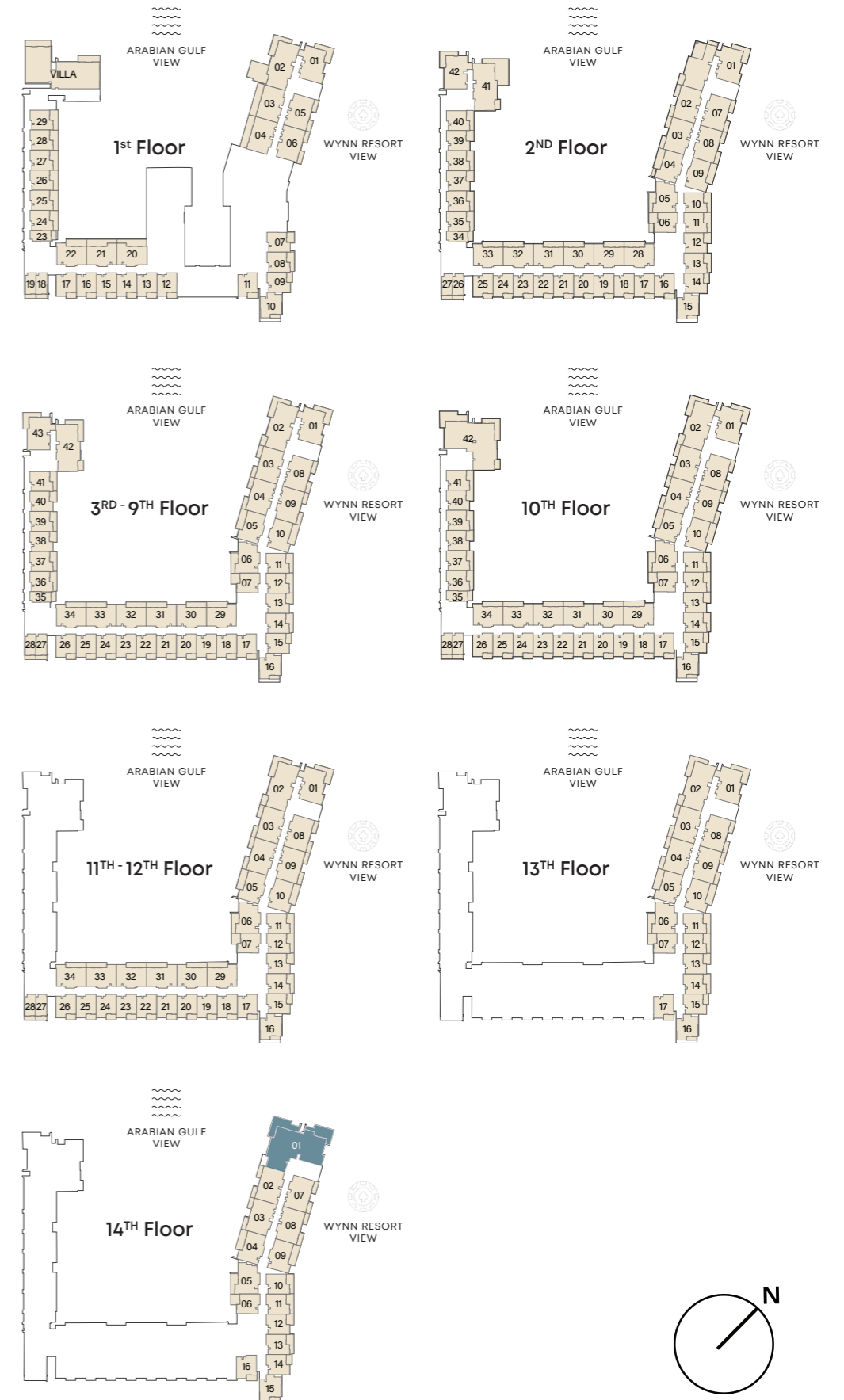
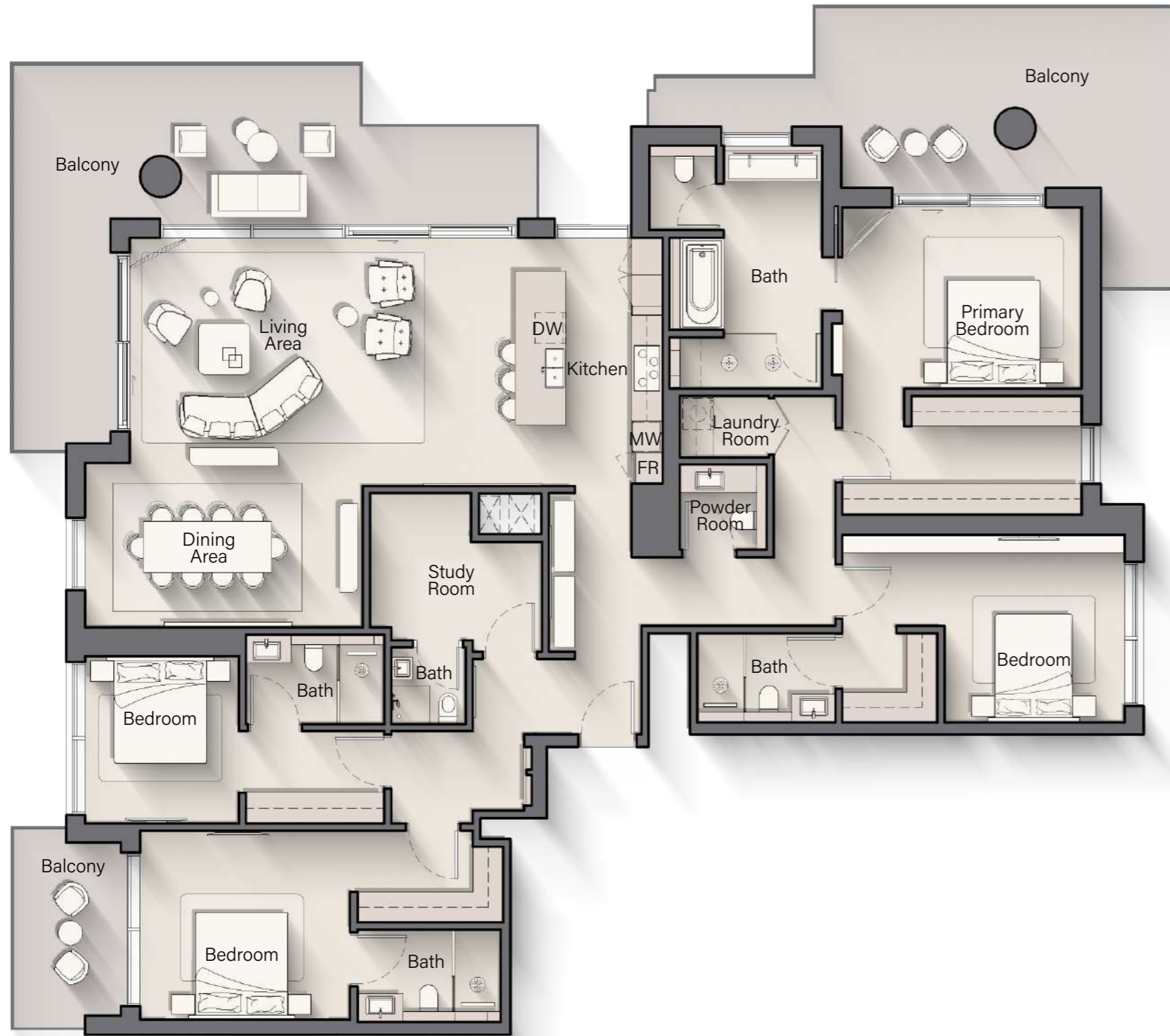
INTERNAL LIVING AREA	2771.81 SQ. FT
OUTDOOR LIVING AREA	778.55 SQ. FT
<b>TOTAL LIVING AREA</b>	<b>3550.37 SQ. FT</b>



# PENTHOUSE

## TYPE B

INTERNAL LIVING AREA	2648.57 SQ. FT
OUTDOOR LIVING AREA	810.52 SQ. FT
<b>TOTAL LIVING AREA</b>	<b>3459.09 SQ. FT</b>

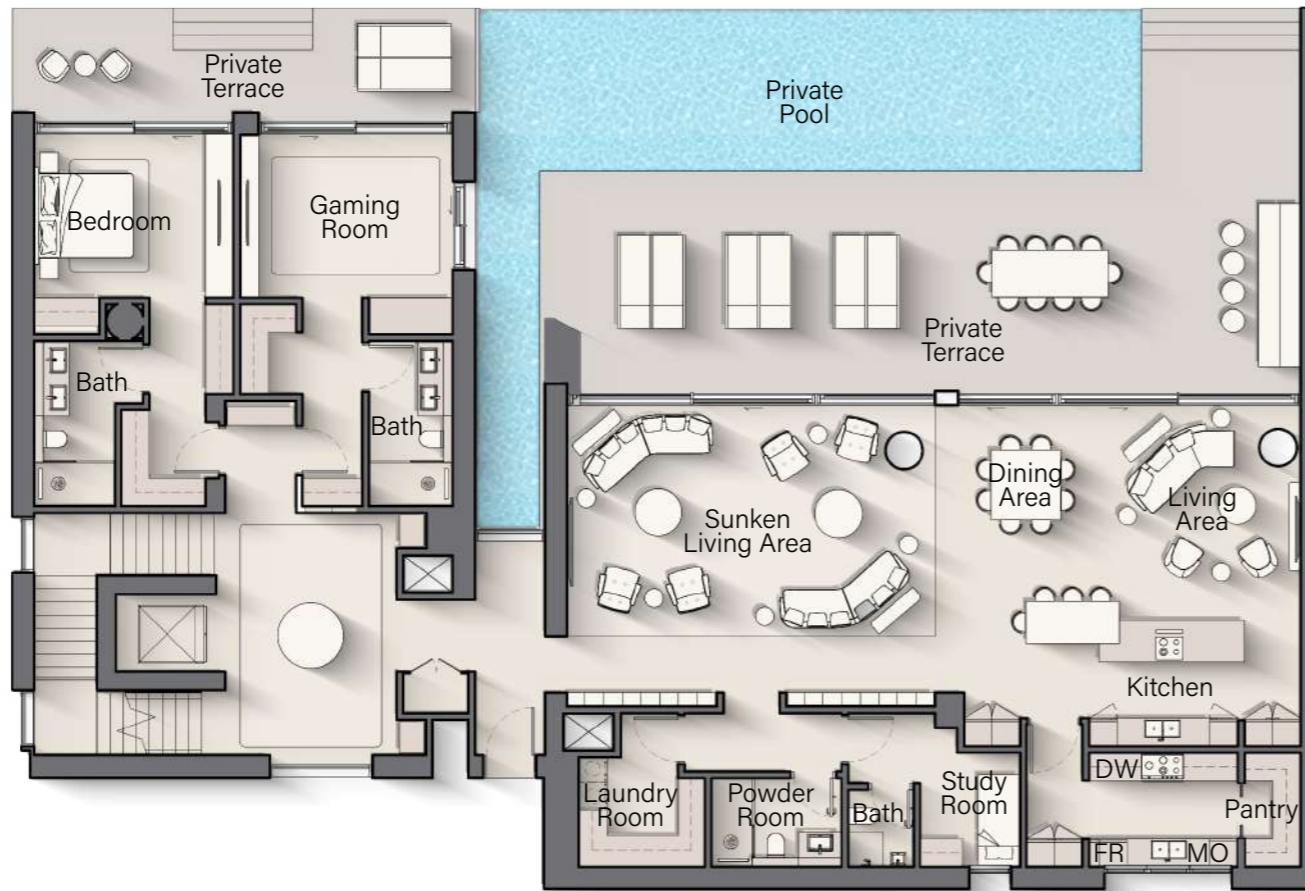


# THE VILLA

5 Bedroom - B + G + 1

INTERNAL LIVING AREA	6392.15 SQ. FT
OUTDOOR LIVING AREA	2281.63 SQ. FT
<b>TOTAL LIVING AREA</b>	<b>8673.77 SQ. FT</b>

LOWER LEVEL



UPPER LEVEL

