



جي جا العقارية
PROPERTIES

KENTIA

RESIDENCE

www.kentiaresidence.ae

KENTIA

RESIDENCE



The image shows a detailed architectural floor plan of a building. The plan is symmetrical, featuring a central vertical corridor that runs through the middle. On either side of this corridor, there are multiple rows of rooms, likely offices or classrooms, each with its own door and window. At the top and bottom of the plan, there are larger, more complex areas that could be common areas, meeting rooms, or administrative offices. The drawing uses fine lines to represent walls, doors, windows, and furniture. The overall layout is organized and functional.

FLOORS PLAN



RECEPTION LOBBY

TYPICAL FLOOR PLAN

STUDIO 

ONE BEDROOM 

TWO BEDROOM 





MASTER BEDROOM

BLOCK A&B

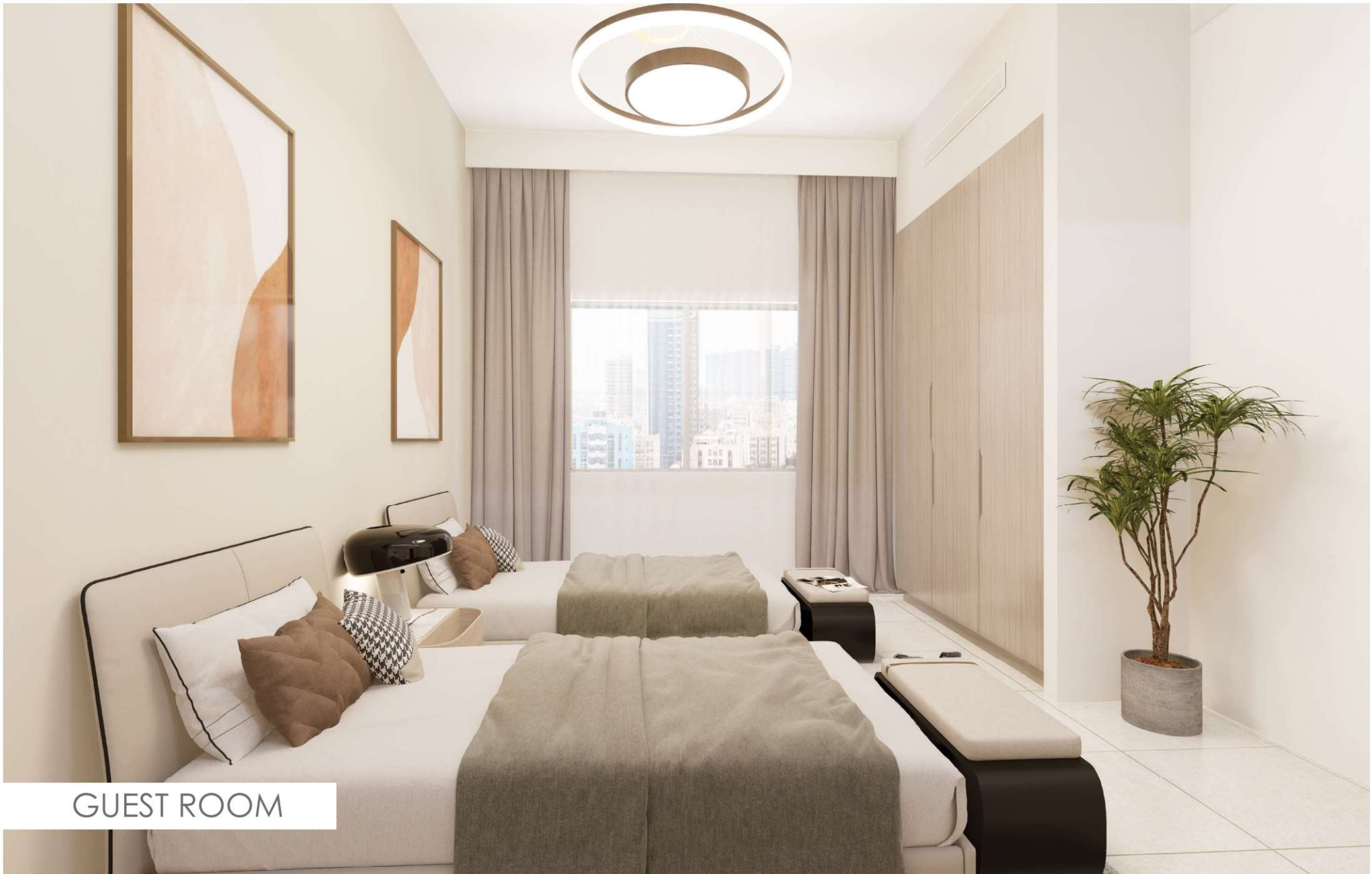
SERIES:	1, 17
SIZES:	STUDIO
SQM:	34.76
SQFT:	374.11



Disclaimer:

1. All materials, finishes, dimensions and drawings are approximate.
2. Actual suite area may vary from the stated area.
3. Drawings are not to scale.

4. Information is subject to change without notice.
5. The Developer reserves the right to make revisions/alterations without any liability whatsoever.



GUEST ROOM

BLOCK A&B

SERIES:	2 , 16
SIZES:	2 BHK
SQM:	149.68
SQFT:	1611.11



Disclaimer:

1. All materials, finishes, dimensions and drawings are approximate.
2. Actual suite area may vary from the stated area.
3. Drawings are not to scale.

4. Information is subject to change without notice.
5. The Developer reserves the right to make revisions/ alterations without any liability whatsoever.



LIVING ROOM

BLOCK A&B

SERIES:	3 , 15
SIZES:	1 BHK
SQM:	91.63
SQFT:	986.30



Disclaimer:

1. All materials, finishes, dimensions and drawings are approximate.
2. Actual suite area may vary from the stated area.
3. Drawings are not to scale.

4. Information is subject to change without notice.
5. The Developer reserves the right to make revisions/ alterations without any liability whatsoever.



KITCHEN

BLOCK A&B

SERIES:	4 , 14
SIZES:	2 BHK
SQM:	160.77
SQFT:	1730.48



Disclaimer:

1. All materials, finishes, dimensions and drawings are approximate.
2. Actual suite area may vary from the stated area.
3. Drawings are not to scale.

4. Information is subject to change without notice.
5. The Developer reserves the right to make revisions/alterations without any liability whatsoever.



MASTER BATHROOM

BLOCK A&B

SERIES:	5 , 13
SIZES:	1 BHK
SQM:	102.45
SQFT:	1102.81



Disclaimer:

1. All materials, finishes, dimensions and drawings are approximate.
2. Actual suite area may vary from the stated area.
3. Drawings are not to scale.

4. Information is subject to change without notice.
5. The Developer reserves the right to make revisions/ alterations without any liability whatsoever.



POWDER ROOM

BLOCK A&B

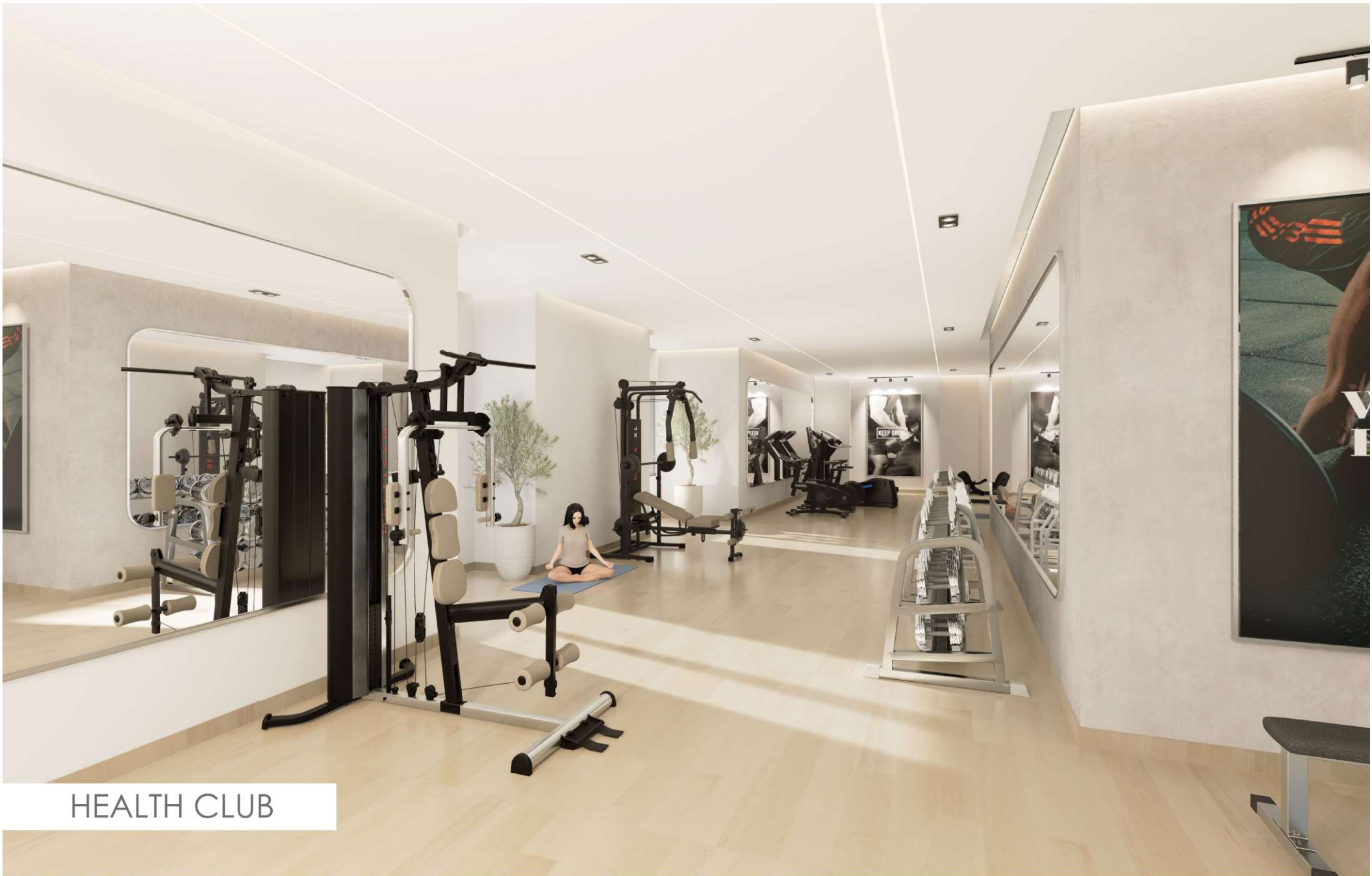
SERIES:	6 , 12
SIZES:	1 BHK
SQM:	103.19
SQFT:	1110.72



Disclaimer:

1. All materials, finishes, dimensions and drawings are approximate.
2. Actual suite area may vary from the stated area.
3. Drawings are not to scale.

4. Information is subject to change without notice.
5. The Developer reserves the right to make revisions/ alterations without any liability whatsoever.

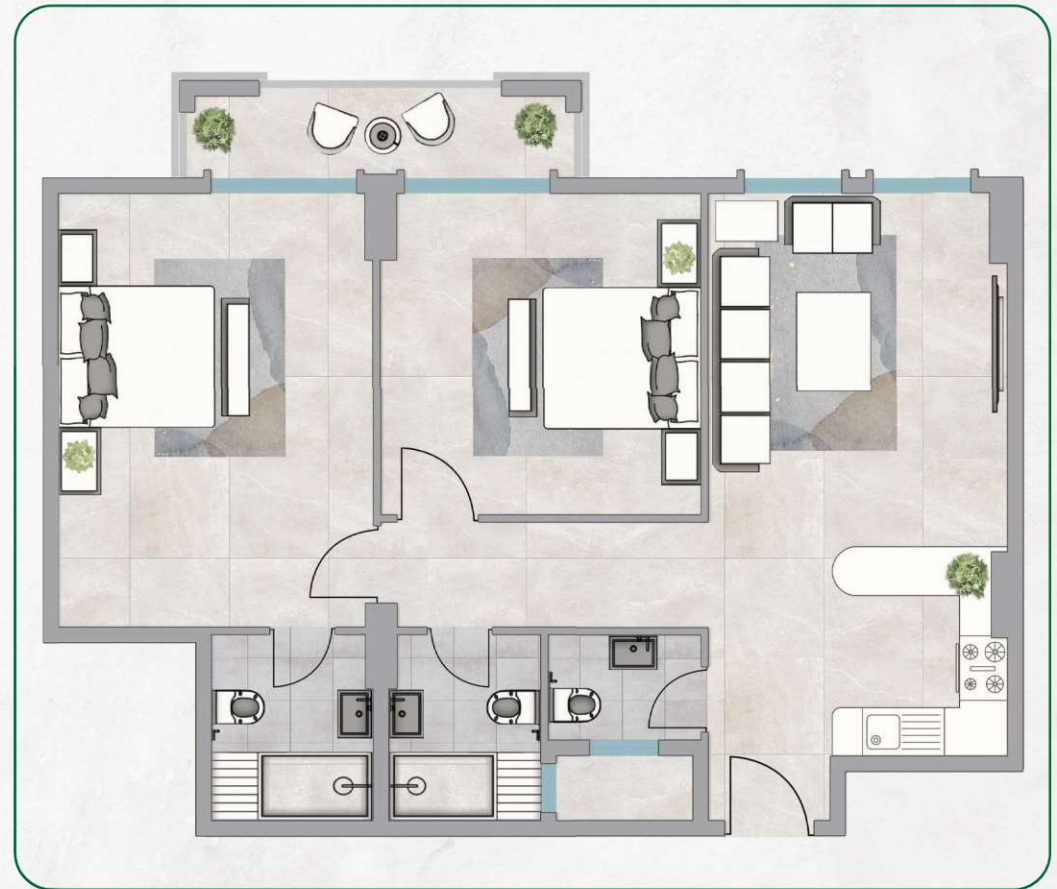


HEALTH CLUB

BLOCK A&B

KENTIA
RESIDENCE

SERIES:	7 , 11
SIZES:	2 BHK
SQM:	147.32
SQFT:	1585.69



Disclaimer:

1. All materials, finishes, dimensions and drawings are approximate.
2. Actual suite area may vary from the stated area.
3. Drawings are not to scale.

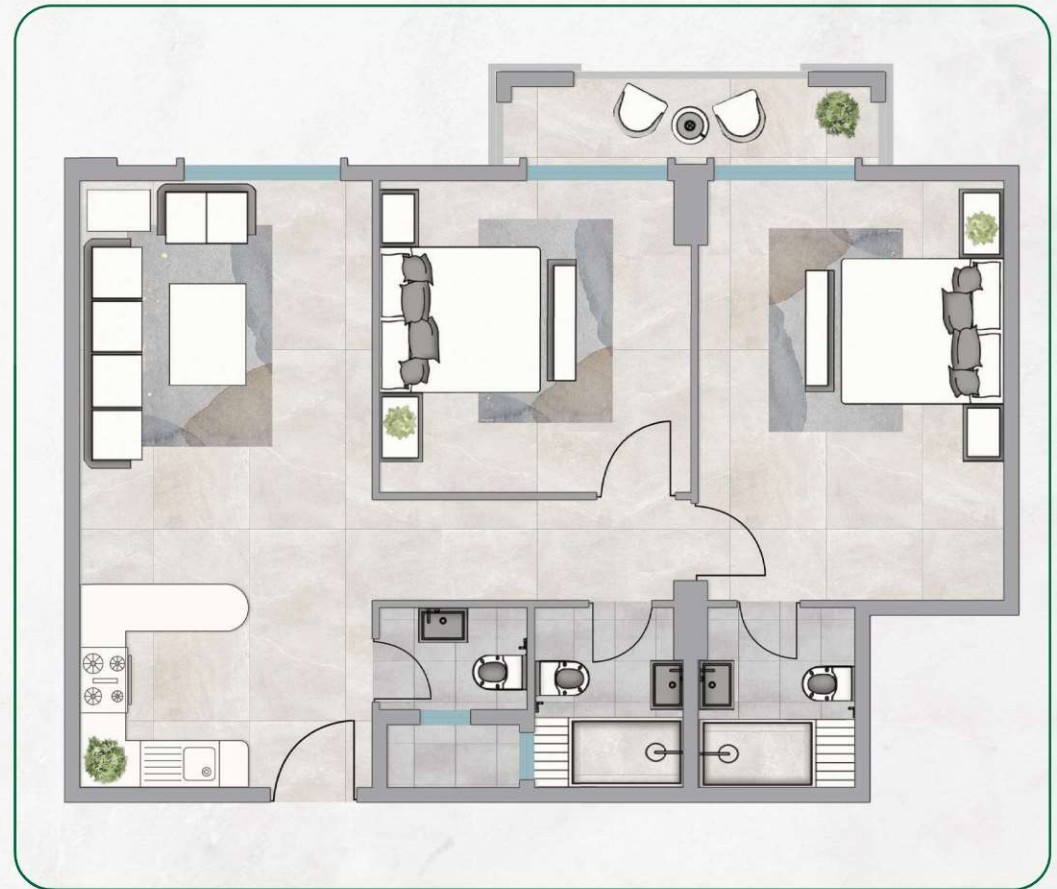
4. Information is subject to change without notice.
5. The Developer reserves the right to make revisions/alterations without any liability whatsoever.



HEALTH CLUB BATHROOM

BLOCK A&B

SERIES:	8
SIZES:	2 BHK
SQM:	148.64
SQFT:	1600.00



Disclaimer:

1. All materials, finishes, dimensions and drawings are approximate.
2. Actual suite area may vary from the stated area.
3. Drawings are not to scale.

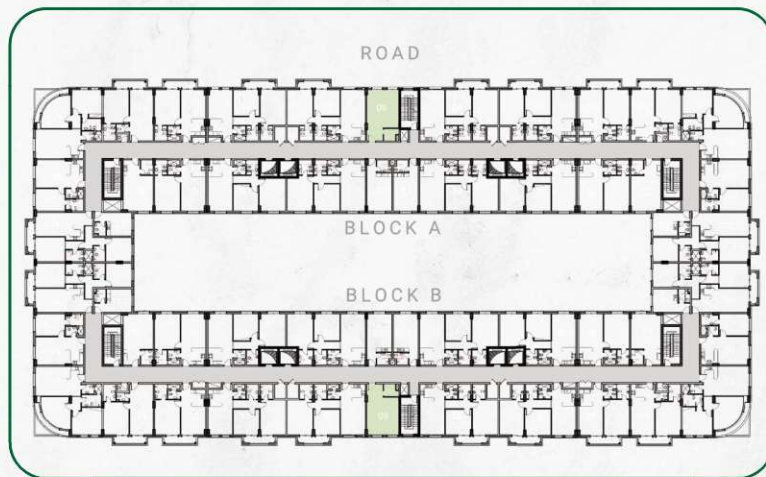
4. Information is subject to change without notice.
5. The Developer reserves the right to make revisions/alterations without any liability whatsoever.



TYPICAL CORRIDOR

BLOCK A&B

SERIES:	9
SIZES:	STUDIO
SQM:	61.77
SQFT:	664.88



Disclaimer:

1. All materials, finishes, dimensions and drawings are approximate.
2. Actual suite area may vary from the stated area.
3. Drawings are not to scale.

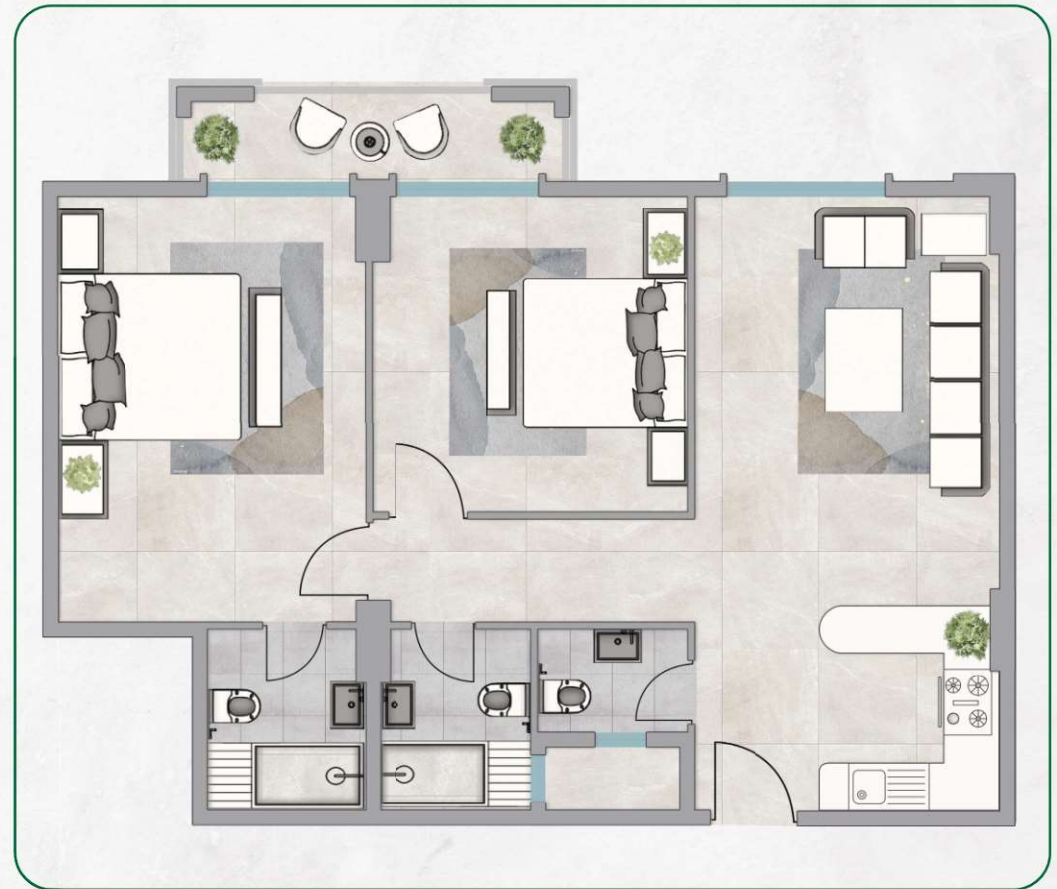
4. Information is subject to change without notice.
5. The Developer reserves the right to make revisions/alterations without any liability whatsoever.



LOBBY AND LIFT

BLOCK A&B

SERIES:	10
SIZES:	2 BHK
SQM:	150.55
SQFT:	1620.54



Disclaimer:

1. All materials, finishes, dimensions and drawings are approximate.
2. Actual suite area may vary from the stated area.
3. Drawings are not to scale.

4. Information is subject to change without notice.
5. The Developer reserves the right to make revisions/alterations without any liability whatsoever.

BLOCK A&B

SERIES:	18 , 27
SIZES:	STUDIO
SQM:	58.78
SQFT:	632.73



Disclaimer:

1. All materials, finishes, dimensions and drawings are approximate.
2. Actual suite area may vary from the stated area.
3. Drawings are not to scale.

4. Information is subject to change without notice.
5. The Developer reserves the right to make revisions/alterations without any liability whatsoever.

BLOCK A&B

SERIES:	19 , 26
SIZES:	1 BHK
SQM:	97.50
SQFT:	1049.44



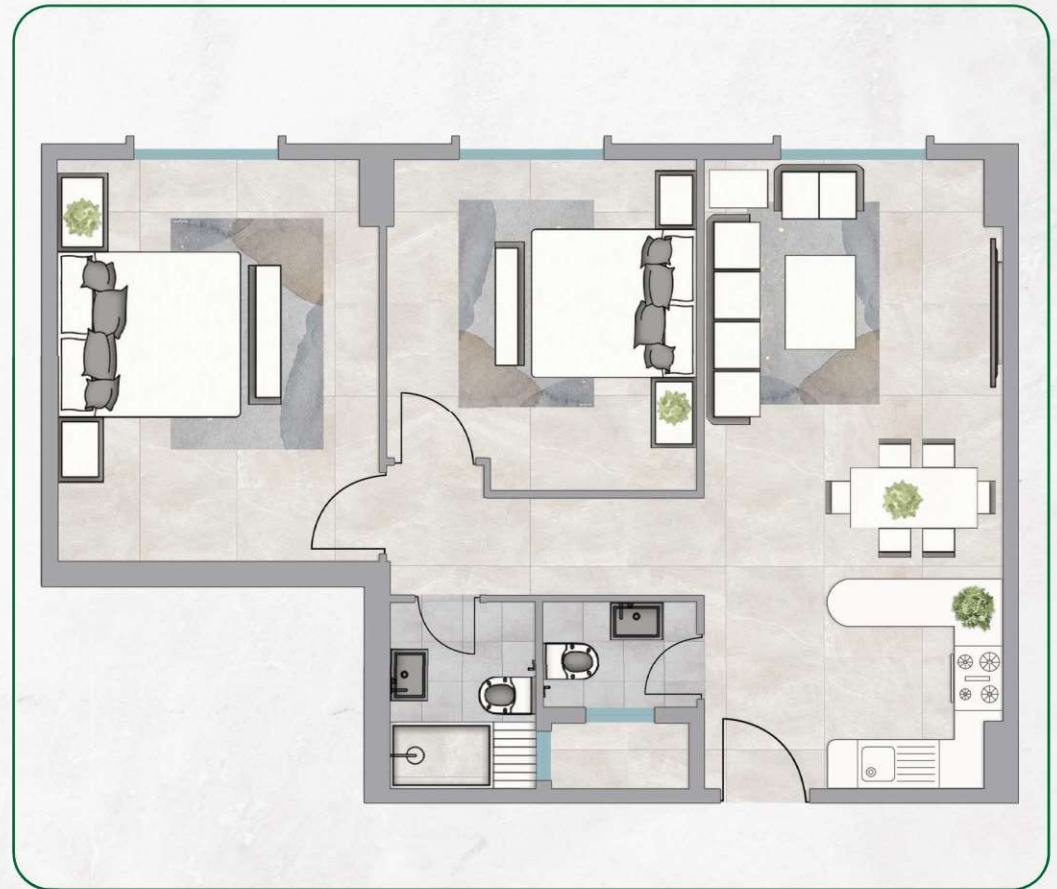
Disclaimer:

1. All materials, finishes, dimensions and drawings are approximate.
2. Actual suite area may vary from the stated area.
3. Drawings are not to scale.

4. Information is subject to change without notice.
5. The Developer reserves the right to make revisions/ alterations without any liability whatsoever.

BLOCK A&B

SERIES:	20 , 25
SIZES:	2 BHK
SQM:	130.22
SQFT:	1401.66



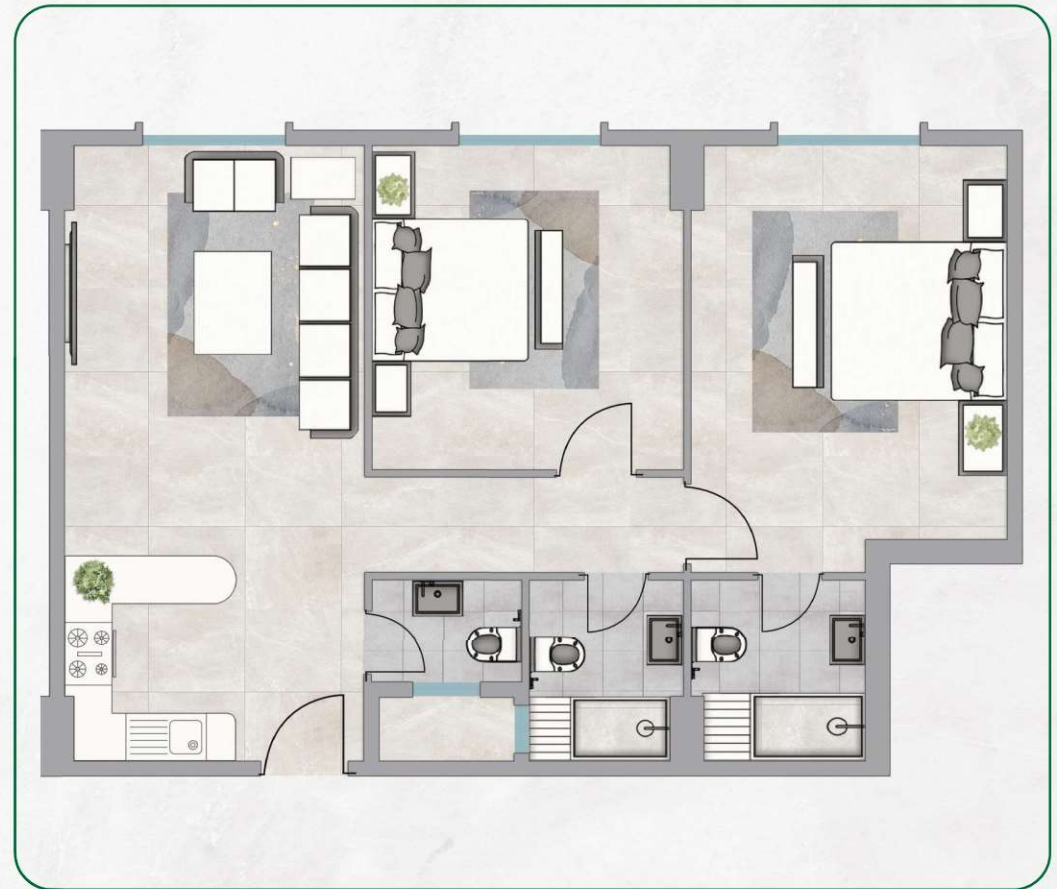
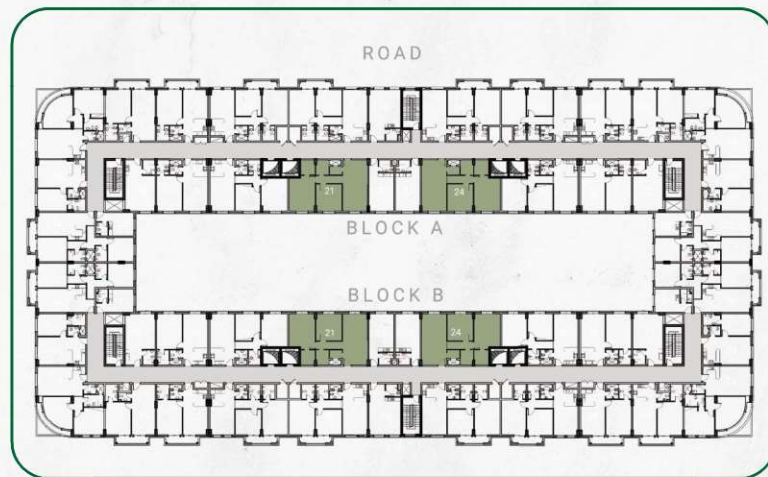
Disclaimer:

1. All materials, finishes, dimensions and drawings are approximate.
2. Actual suite area may vary from the stated area.
3. Drawings are not to scale.

4. Information is subject to change without notice.
5. The Developer reserves the right to make revisions/alterations without any liability whatsoever.

BLOCK A&B

SERIES:	21 , 24
SIZES:	2 BHK
SQM:	141.32
SQFT:	1521.20



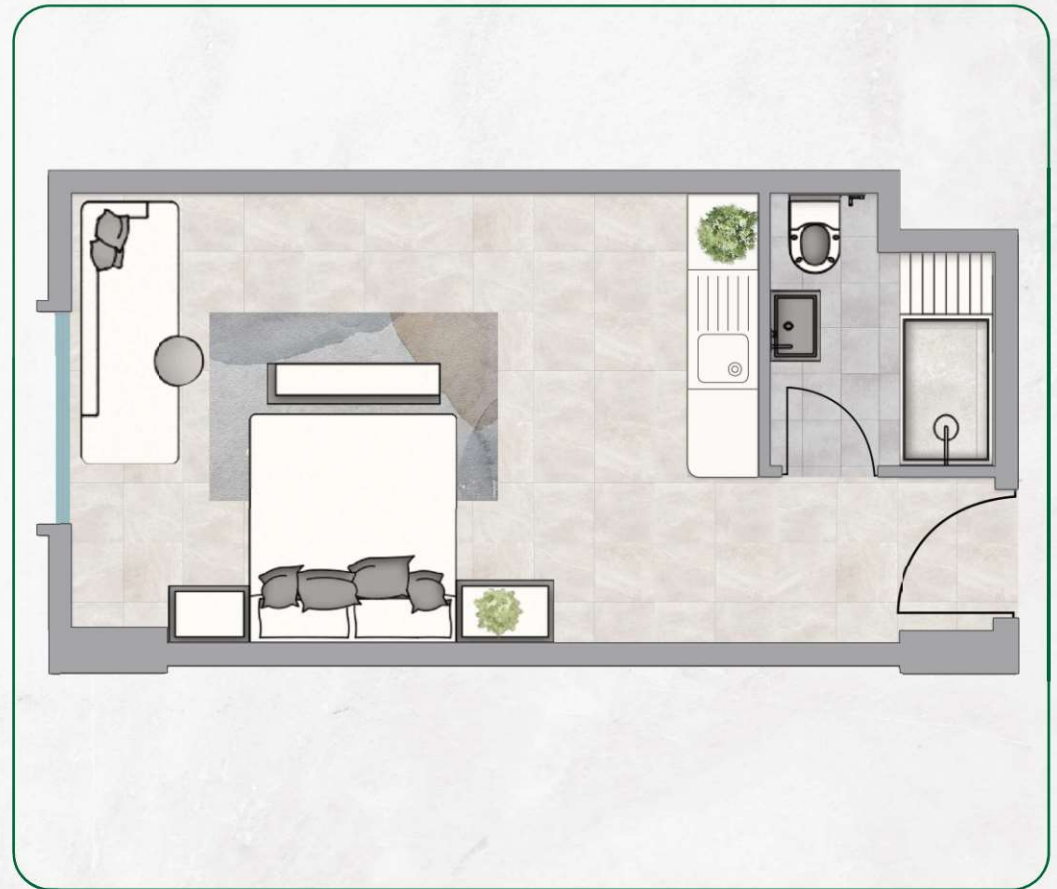
Disclaimer:

1. All materials, finishes, dimensions and drawings are approximate.
2. Actual suite area may vary from the stated area.
3. Drawings are not to scale.

4. Information is subject to change without notice.
5. The Developer reserves the right to make revisions/ alterations without any liability whatsoever.

BLOCK A&B

SERIES:	22 , 23
SIZES:	STUDIO
SQM:	49.46
SQFT:	532.38



Disclaimer:

1. All materials, finishes, dimensions and drawings are approximate.
2. Actual suite area may vary from the stated area.
3. Drawings are not to scale.

4. Information is subject to change without notice.
5. The Developer reserves the right to make revisions/alterations without any liability whatsoever.

PAYMENT PLAN

KENTIA
RESIDENCE

- Flexible payment plans:
Multiple convenient installments to suit various budgets
- Affordable down payments: Easy entry into the real estate market
- Stress-free buying process: Realize your dream of owning a new home without upfront costs

- خطط سداد مرنة:
أقساط متعددة مريحة تناسب مختلف الميزانيات
- دفعات مقدمة ميسورة التكلفة:
سهولة الدخول إلى سوق العقارات
- عملية شراء خالية من الإجهاد:
حقق حلمك بامتلاك منزل جديد دون تكاليف مسبقة



No Registration Cost
Flexible Payment Plans
Minimum Maintenance Fee

بدون رسوم تسجيل
خطط سداد مرنة
الحد الأدنى لرسوم الصيانة

10 %

DOWN PAYMENT

6

YEARS PLAN



GJ PROPERTIES



GJ Properties is a prominent real estate development company based in Ajman, established in 1998. It is one of the largest and fastest growing providers of residential, commercial and industrial real estate in the region, and was awarded the “Best Real Estate Agency” award at the 2020-21 Arabian Property Awards.

GJ Properties is committed to providing unique offerings that meet and exceed customer expectations in all aspects of construction. The company was founded to provide integrated real estate solutions that combine investment and lifestyle. Providing the best possible customer service is at the core of its business.

This motivation reflects the company's continuous effort to offer distinctive projects at affordable prices. Having launched a variety of properties in Ajman, such as villas, apartments, and large-scale projects.

The GJ Properties team includes highly qualified designers, architects, and construction workers, which shows their outstanding performance in the real estate market. Their designs are based on the principles of comfort and functionality, informed by the science of biomechanics.

Whether it's rental properties or waterfront homes, the GJ Properties team works to perfectly meet the needs of the community. The company ensures that every property developed provides comfort and sustainability for years to come, while adapting to modern architecture trends. Dedicated to creating homes for generations.



جي جا العقارية
PROPERTIES

جي جا العقارية

جي جا العقارية هي شركة تطوير عقاري بارزة مقرها عجمان، تأسست عام 1998. تُعتبر واحدة من أكبر وأسرع الشركات نمواً في تقديم العقارات السكنية والتجارية والصناعية في المنطقة، وقد حصلت على جائزة "أفضل وكالة عقارية" من جوائز العقارات العربية لعام 2020-21.

تلتزم جي جا العقارية بتقديم عروض فريدة تلبى وتتجاوز توقعات العملاء في جميع جوانب البناء. تأسست الشركة لتوفير حلول عقارية متكاملة تجمع بين الاستثمار ونمط الحياة. ويُعتبر تقديم أفضل خدمة ممكنة للعملاء هو أساس عملها.

هذا الدافع يعكس جهد الشركة المستمر لتقديم مشاريع مميزة بأسعار معقولة. بعد إطلاق مجموعة متنوعة من العقارات في عجمان، مثل الفيلات والشقق والمشاريع الكبيرة.

يضم فريق جي جا العقارية مصممين و مهندسي عمارة وعاملين في البناء ذوي كفاءة عالية، مما يُظهر أدائهم المتميز في السوق العقاري. تعتمد تصاميمهم على مبادئ الراحة والوظائف، مستندةً إلى علم الميكانيكا الحيوية.

سواء كانت عقارات للإيجار أو منازل على الواجهة البحرية، يعمل فريق جي جا العقارية على تلبية احتياجات المجتمع بشكل مثالي. تضمن الشركة أن كل عقار يتم تطويره يوفر راحة واستدامة لسنوات قادمة، مع التكيف مع اتجاهات العمارة الحديثة. مكرسة لإنشاء منازل للأجيال،



جي جا العقارية
PROPERTIES

KENTIA

RESIDENCE

Head Office:

Ground Floor, Oasis Tower 2
Sheikh Rashid Bin Saeed
Al Maktoum Street, Ajman, UAE

Phone: +971 6 741 4478
Toll Free: 800 GJAJM (45256)
Email: info@gjproperties.ae
www.gjproperties.ae