



# **Barari Park View**

by Al-Mawared.ae





## AN OASIS IN THE HEART OF DUBAI

BARARI PARKVIEW OFFERS THE PERFECT BALANCE BETWEEN CITY LIVING AND A CALM, NATURAL ENVIRONMENT, IT IS YOUR PEACEFUL GETAWAY IN THE HEART OF DUBAI. IT'S MORE THAN A HOME, IT'S A SANCTUARY WHERE YOU CAN UNWIND AND RELAX, WHILE STILL BEING CLOSE TO THE PULSE OF THE CITY.







## UNMATCHED AMENITIES FOR A LIFESTYLE OF LEISURE AND WELLNESS

EXPERIENCE A RANGE OF THOUGHTFULLY DESIGNED AMENITIES AT BARARI PARKVIEW, FROM A ROOFTOP INFINITY POOL AND OUTDOOR CINEMA TO A HEALTH CLUB, YOGA LAWN, AND SMART HOME FEATURES. WHETHER YOU'RE SEEKING RELAXATION OR RECREATION, THERE'S SOMETHING FOR EVERY LIFESTYLE.



HEALTH CLUB



OUTDOOR CINEMA



ROOFTOP INFINITY SWIMMING POOL



KIDS PLAY AREA



KIDS SWIMMING POOL



RUNNING TRACK



ENTERTAINMENT ROOM



YOGA LAWN



SMART HOME



LEISURE POOL DECK



SEATING AREA



SAUNA ROOM



STEAM ROOM



PADDLE COURT



CHESS PLAY AREA



TABLE TENNIS



VR GOLF



CYCLE TRACK





**STATE OF THE ART  
ROOF TOP HEALTH  
CLUB**



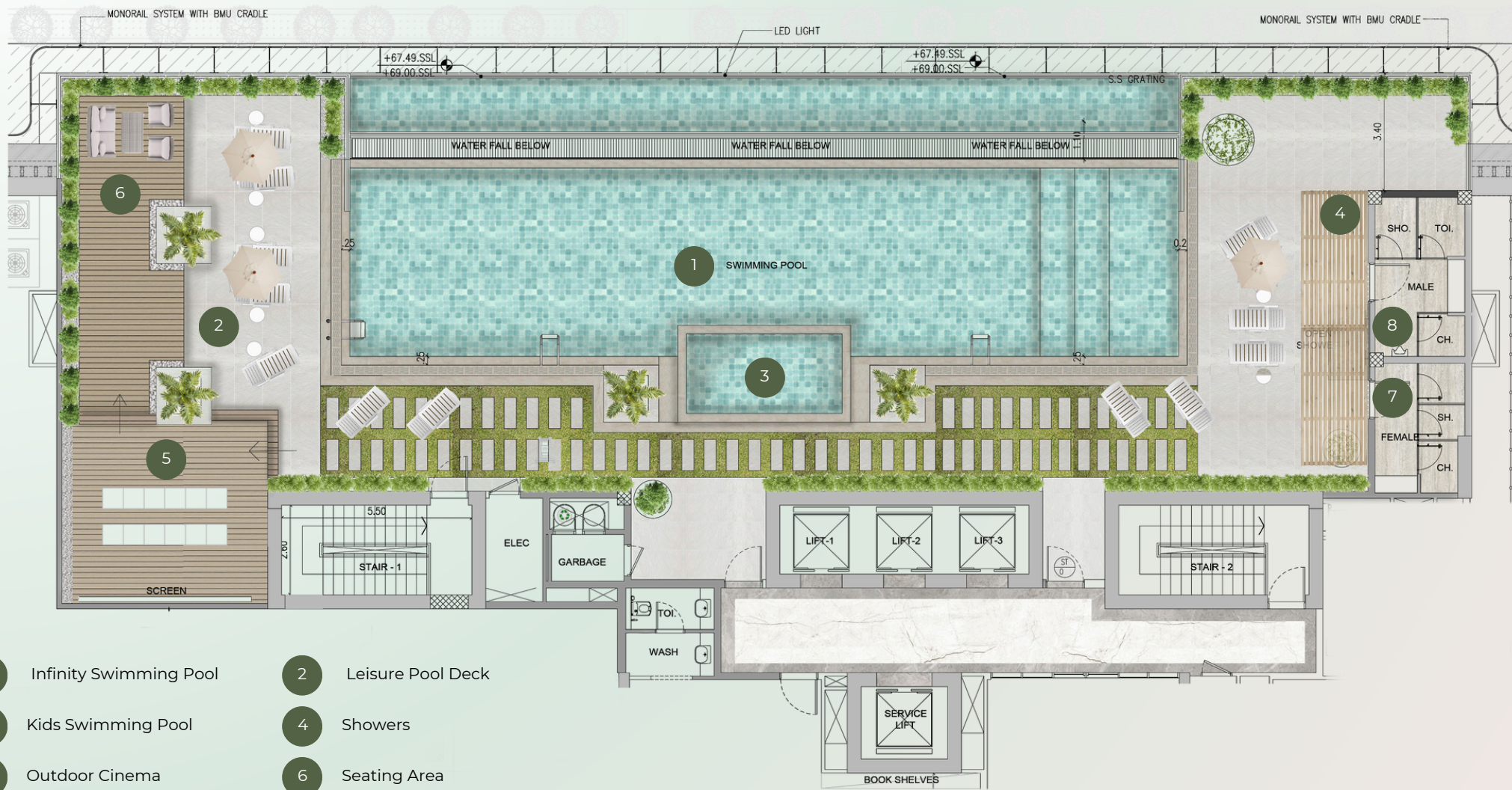


- |   |                 |   |                 |
|---|-----------------|---|-----------------|
| 1 | Paddle Court    | 2 | Seating Area    |
| 3 | Yoga Lawn       | 4 | Chess Play Area |
| 5 | Kids Playground | 6 | Running Track   |

## First Floor Outdoor Amenities

Disclaimer: 1. All room dimensions are measured to structural elements, excluding wall finishes and construction tolerances. 2. Dimensions have been provided by our consultant architects. 3. All materials, dimensions, and drawings are approximate and subject to change without notice. 4. Actual suite area may vary from the stated area. Drawings are not to scale. The developer reserves the right to make revisions. 5. Suite area is calculated using the centerline of demising/partition walls separating units, the exterior face of exterior walls, and the corridor wall adjacent to the unit. 6. Balcony area is measured from the centerline of demising/partition walls, the outermost face of the enclosing guard, and the exterior face of adjoining balconies. 8. Unit measurements are based on typical floor plans. Column sizes may vary between floors. 9. Unit sizes and details may differ slightly between unit types. Please refer to the sales and purchase agreement for the exact size of your specific unit.

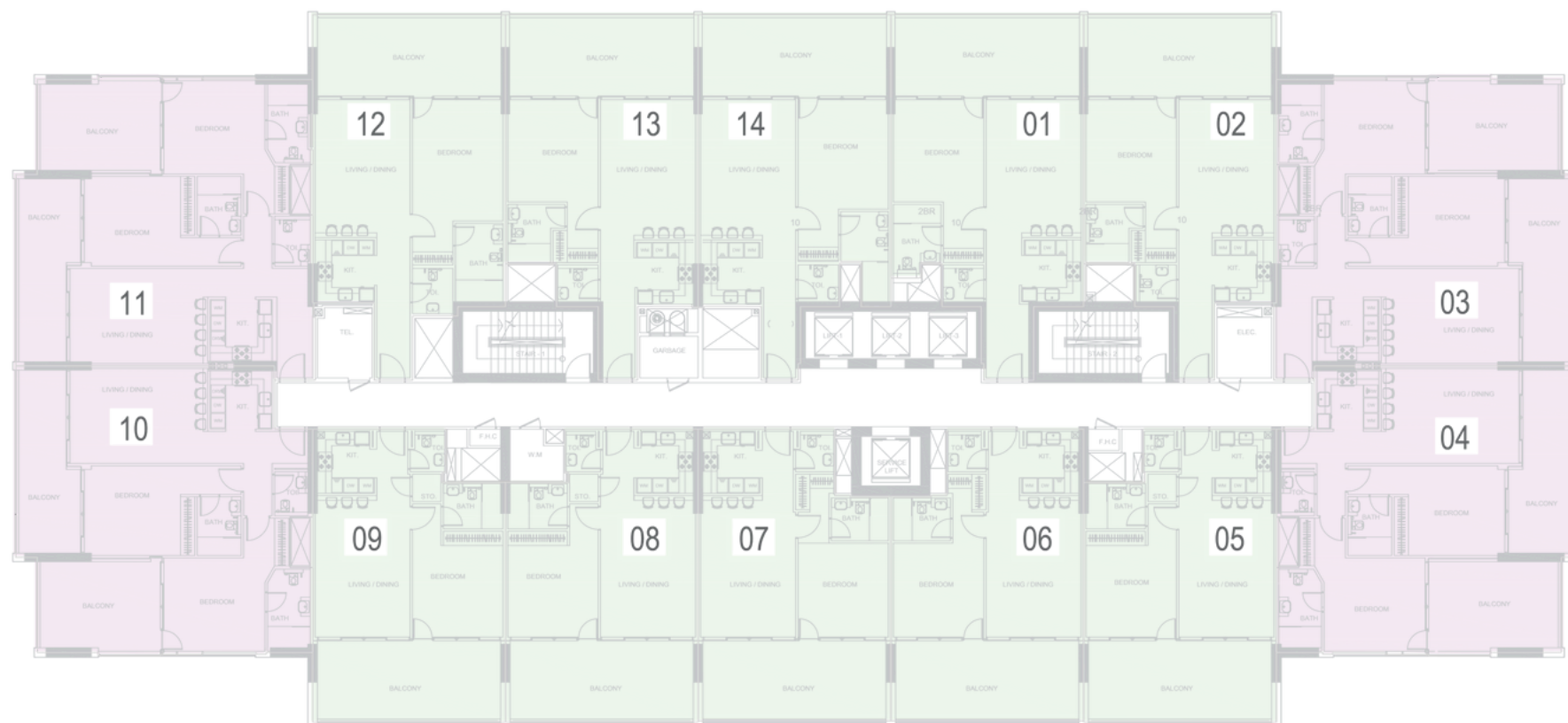




- |   |                        |   |                   |
|---|------------------------|---|-------------------|
| 1 | Infinity Swimming Pool | 2 | Leisure Pool Deck |
| 3 | Kids Swimming Pool     | 4 | Showers           |
| 5 | Outdoor Cinema         | 6 | Seating Area      |
| 7 | Female WC              | 8 | Male WC           |

## Zen Floor Outdoor Amenities





## FLOOR PLAN



1 BEDROOM APARTMENT

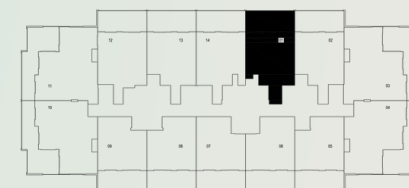


2 BEDROOM APARTMENT





FLOOR PLAN



## 1 BEDROOM APARTMENT - 01 SERIES

Indoor Living Area

806.21 Sq.ft<sup>2</sup>

Outdoor Living Area

304.40 Sq.ft<sup>2</sup>

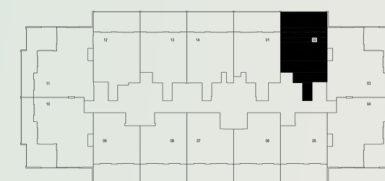
Total Living Area

1110.62 Sq.ft<sup>2</sup>





FLOOR PLAN



## 1 BEDROOM APARTMENT - 02 SERIES

Indoor Living Area

776.72 Sq.ft<sup>2</sup>

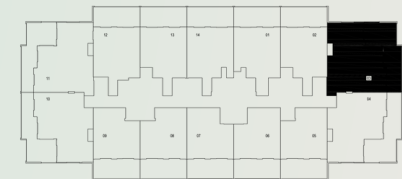
Outdoor Living Area

304.40 Sq.ft<sup>2</sup>

Total Living Area

1080.69 Sq.ft<sup>2</sup>





## 2 BEDROOM APARTMENT - 03 SERIES

Indoor Living Area

1133.33 Sq.ft<sup>2</sup>

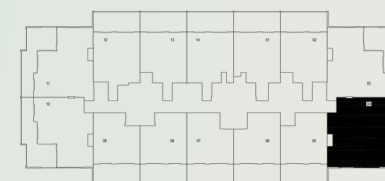
Outdoor Living Area

493.84 Sq.ft<sup>2</sup>

Total Living Area

1627.18 Sq.ft<sup>2</sup>





## 2 BEDROOM APARTMENT - 04 SERIES

Indoor Living Area

1074.23 Sq.ft<sup>2</sup>

Outdoor Living Area

493.74 Sq.ft<sup>2</sup>

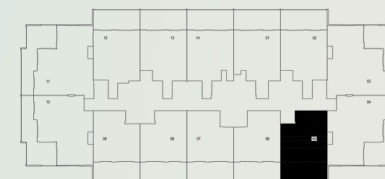
Total Living Area

1567.97 Sq.ft<sup>2</sup>





FLOOR PLAN



## 1 BEDROOM APARTMENT - 05 SERIES

Indoor Living Area

709.34 ft<sup>2</sup>

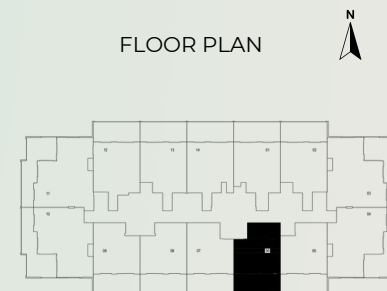
Outdoor Living Area

304.29 ft<sup>2</sup>

Total Living Area

1013.63 ft<sup>2</sup>





## 1 BEDROOM APARTMENT - 06 SERIES

Indoor Living Area

698.47 Sq.ft<sup>2</sup>

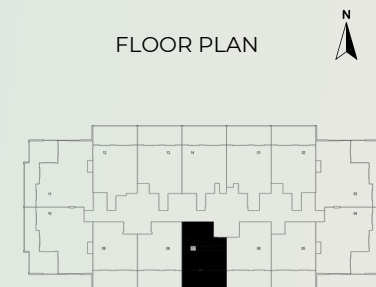
Outdoor Living Area

299.99 Sq.ft<sup>2</sup>

Total Living Area

998.46 Sq.ft<sup>2</sup>

Disclaimer: 1. All room dimensions are measured to structural elements, excluding wall finishes and construction tolerances. 2. Dimensions have been provided by our consultant architects. 3. All materials, dimensions, and drawings are approximate and subject to change without notice. 4. Actual suite area may vary from the stated area. Drawings are not to scale. The developer reserves the right to make revisions. 5. Suite area is calculated using the centerline of demising/partition walls separating units, the exterior face of exterior walls, and the corridor wall adjacent to the unit. 6. Balcony area is measured from the centerline of demising/partition walls, the outermost face of the enclosing guard, and the exterior face of adjoining balconies. 8. Unit measurements are based on typical floor plans. Column sizes may vary between floors. 9. Unit sizes and details may differ slightly between unit types. Please refer to the sales and purchase agreement for the exact size of your specific unit.



## 1 BEDROOM APARTMENT - 07 SERIES

Indoor Living Area

698.47 Sq.ft<sup>2</sup>

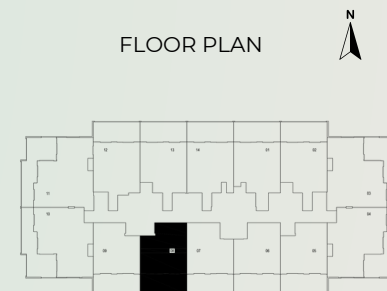
Outdoor Living Area

299.99 Sq.ft<sup>2</sup>

Total Living Area

998.46 Sq.ft<sup>2</sup>





## 1 BEDROOM APARTMENT - 08 SERIES

Indoor Living Area

709.01 Sq.ft<sup>2</sup>

Outdoor Living Area

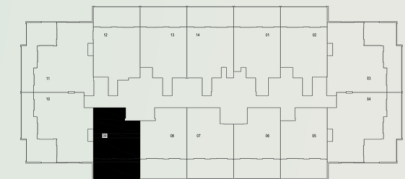
304.29 Sq.ft<sup>2</sup>

Total Living Area

1013.31 Sq.ft<sup>2</sup>



FLOOR PLAN



## 1 BEDROOM APARTMENT - 09 SERIES

Indoor Living Area

709.01 Sq.ft<sup>2</sup>

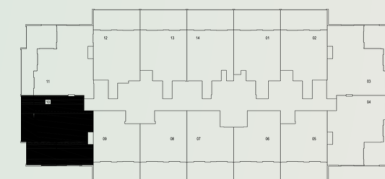
Outdoor Living Area

304.29 Sq.ft<sup>2</sup>

Total Living Area

1013.31 Sq.ft<sup>2</sup>





## 2 BEDROOM APARTMENT - 10 SERIES

Indoor Living Area

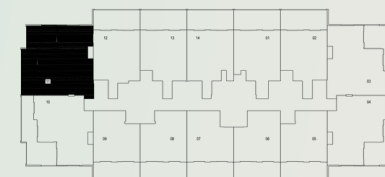
1073.70 Sq.ft<sup>2</sup>

Outdoor Living Area

442.39 Sq.ft<sup>2</sup>

Total Living Area

1516.09 Sq.ft<sup>2</sup>



## 2 BEDROOM APARTMENT - 11 SERIES

Indoor Living Area

1131.71 Sq.ft<sup>2</sup>

Outdoor Living Area

442.39 Sq.ft<sup>2</sup>

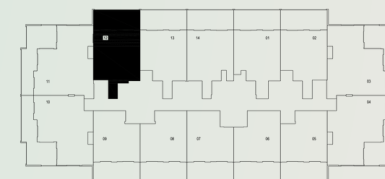
Total Living Area

1574.11 Sq.ft<sup>2</sup>





FLOOR PLAN



## 1 BEDROOM APARTMENT - 12 SERIES

Indoor Living Area

823.97 Sq.ft<sup>2</sup>

Outdoor Living Area

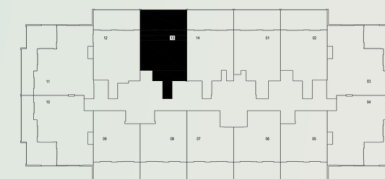
304.40 Sq.ft<sup>2</sup>

Total Living Area

1128.38 Sq.ft<sup>2</sup>



FLOOR PLAN



## 1 BEDROOM APARTMENT - 13 SERIES

Indoor Living Area

798.68 Sq.ft<sup>2</sup>

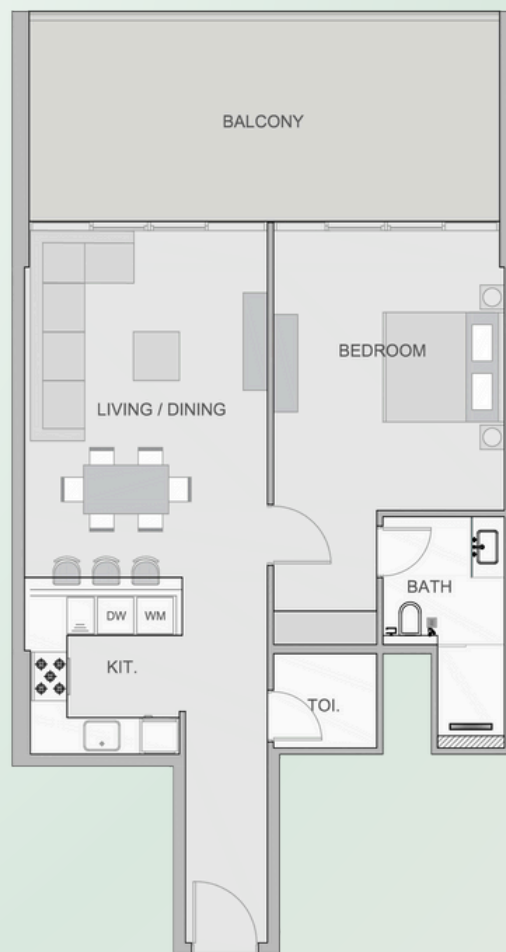
Outdoor Living Area

304.40 Sq.ft<sup>2</sup>

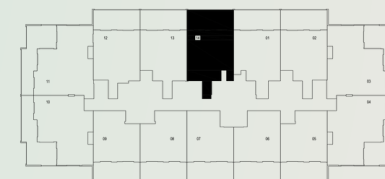
Total Living Area

1083.71 Sq.ft<sup>2</sup>





FLOOR PLAN



## 1 BEDROOM APARTMENT - 14 SERIES

Indoor Living Area

74.56 Sq.ft<sup>2</sup>

Outdoor Living Area

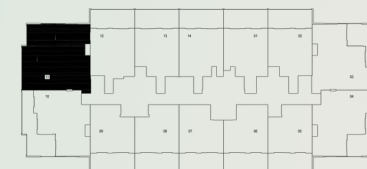
304.40 Sq.ft<sup>2</sup>

Total Living Area

1106.96 Sq.ft<sup>2</sup>



1ST FLOOR PLAN



## 3 BEDROOM APARTMENT

Indoor Living Area

1,517.81 Sq.ft<sup>2</sup>

Outdoor Living Area

1,116.75 Sq.ft<sup>2</sup>

Total Living Area

2,634.57 Sq.ft<sup>2</sup>



## Barari Park View

by Al-Mawared.ae

