



# White Stone

By Axiom Prime

Jumeirah Garden City Dubai UAE



YOUR NEW HOME

# Welcome

Welcome to White Stone, a hidden gem nestled in the prestigious neighborhood of Jumeirah Garden City, Dubai. This exclusive address embodies the epitome of luxury living, where timeless elegance meets contemporary sophistication. Step into a world of opulence, where every detail has been meticulously crafted to offer an unparalleled living experience. Prepare to embark on a journey of elegance and prestige, as we invite you to discover the true essence of luxurious living in the heart of Dubai's most coveted locale.





# Timeless Elegance

At White Stone, you will discover a harmonious blend of timeless elegance and modern luxury. From the moment you step inside the grand lobby, you'll be captivated by the surrounding opulence. The meticulously branded interiors feature high-end finishes, bespoke furnishings, and state-of-the-art technology, creating a sophisticated ambiance that reflects the epitome of refined living. Each apartment boasts spacious layouts and offers unobstructed city views, providing an unparalleled sense of tranquility amidst the bustling metropolis.

Skyline

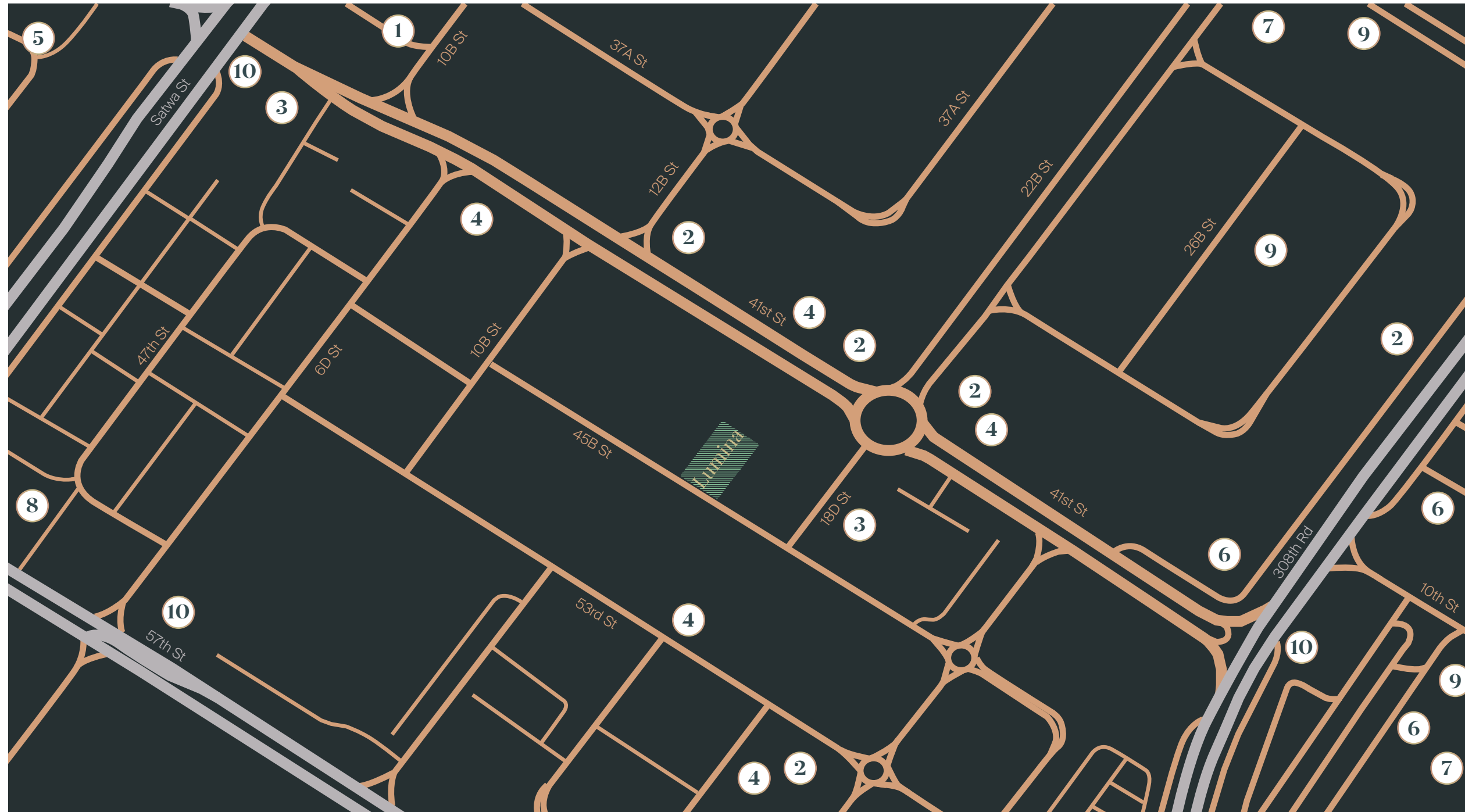
Premium experience



As evening sets in, enjoy a coffee on your private balcony, where the city view meet perfect privacy. This elegant space offers a serene escape, combining comfort and sophistication with a stunning backdrop of the city lights.

# Premium Location

Nestled in the heart of Jumeirah Garden City, Dubai's most coveted neighborhood, Lumina stands as the crown jewel of refined living. Its prime location offers residents an unparalleled experience, surrounded by the epitome of luxury, culture, and sophistication. From exclusive boutiques and Michelin-starred restaurants to iconic landmarks and prestigious schools, this address places you at the epicenter of Dubai's vibrant cosmopolitan lifestyle.



## Key Surroundings

### KEY

- 1 Exclusive Shopping
- 2 Fine Dining Restaurants
- 3 Religious Buildings
- 4 Beauty Salons
- 5 Open Spaces
- 6 Premier Health Clubs
- 7 Entertainment Venues
- 8 Prestigious Schools
- 9 Luxury Hotels
- 10 Excellent Transportation Links



# Elegant Transparency

White Stone striking elevation is a testament to its transparent, open, and inviting design. The expansive balconies, adorned with our signature gold-branded louvers, offer both a sense of luxury and essential privacy, creating intimate outdoor spaces perfect for relaxation and taking in the breathtaking views of Dubai. The rooftop infinity pool enhances the building's modern aesthetic, while the podium garden beautifully conceals the parking area, blending nature with urban sophistication.

Refined  
Retreats

Intimate Outdoor Spaces for Relaxation.





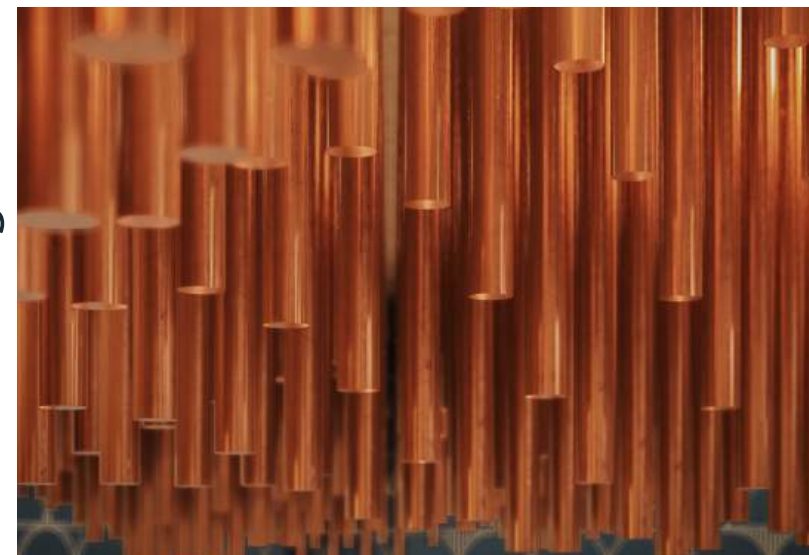
EXCLUSIVE

# A Privileged Address in Dubai

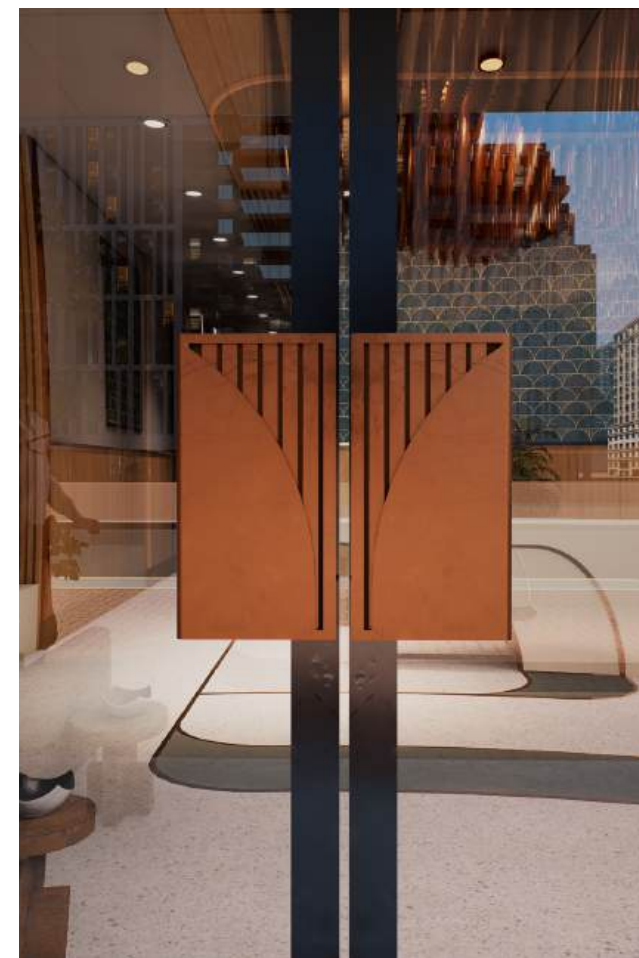
At White Stone, luxury and light come together to create a truly exceptional living experience. This boutique residential tower in the heart of Dubai is an architectural gem, defined by its elegant horizontality and distinctive louvers that balance transparency with privacy. Surrounded by iconic landmarks, designer boutiques, and Michelin-starred restaurants, White Stone offers a lifestyle that embodies the pinnacle of city living. Every detail, from the spacious, light-filled interiors to the refined finishes, reflects our commitment to luxury and design excellence.

Welcome to White Stone.

Prestige Living



Branded Experience



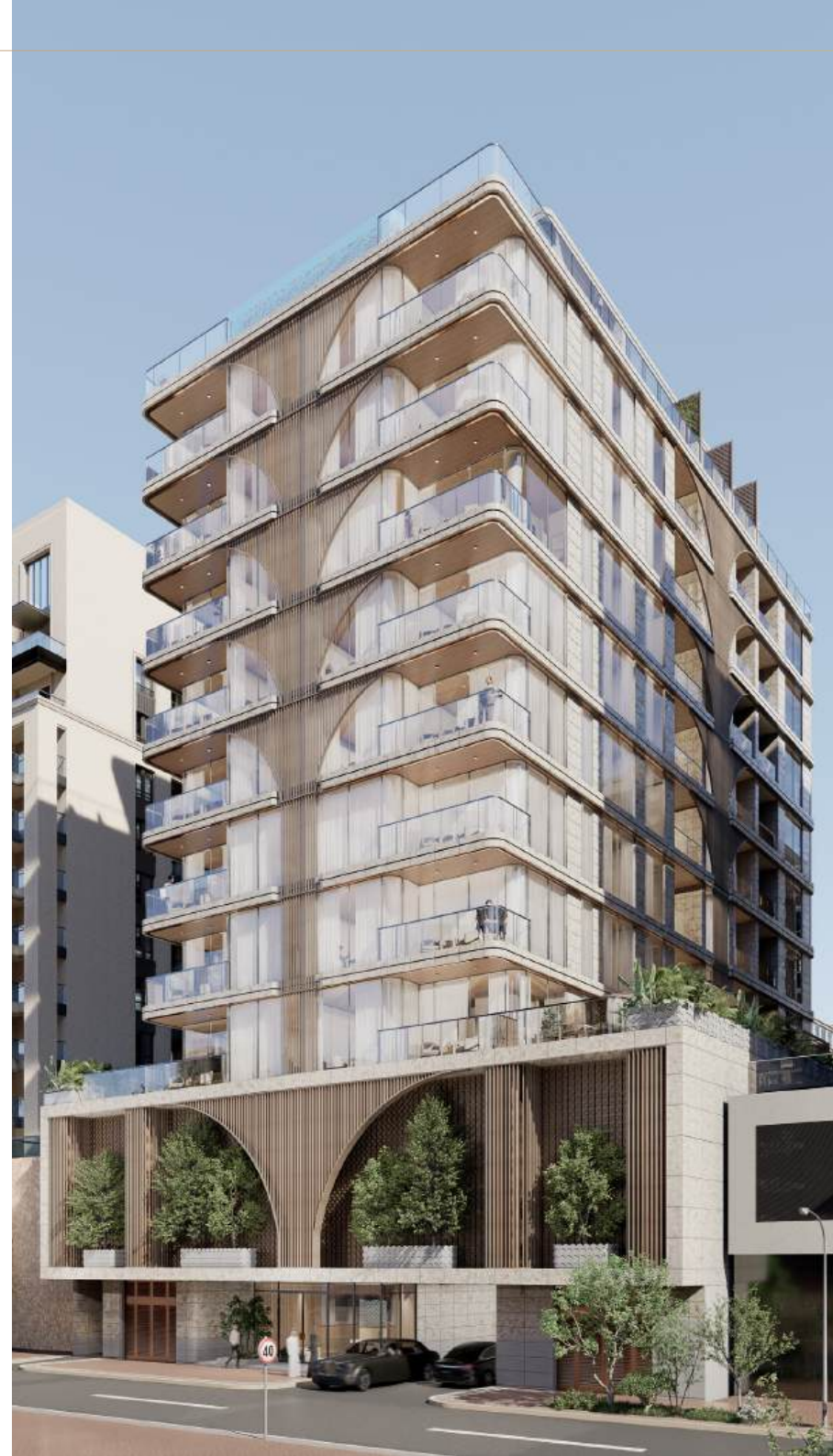


# Grand Entrance

Upon arriving home, the secure, two-level parking offers peace of mind, while the illuminated lobby, with its transparent glass facades, draws you into a world of refined sophistication. The sleek, modern design showcases the beauty of natural light, enhancing the sense of openness and luxury. Greeted by the attentive concierge, every moment at White Stone is crafted to elevate your living experience, blending elegance with an unparalleled connection to the surrounding environment.

Elegance &  
Light

The White Stone Experience









# Warm Welcome

Visitors are welcomed by the inviting reception and lounge, immediately captivated by the sleek design and meticulous attention to detail in the communal spaces. As they ascend in the high-speed elevator, they anticipate an evening of comfort and relaxation, impressed by the ambiance that defines White Stone's luxurious living experience.

Opulent  
Arrival

Ground Floor









# Elegant Transition

As you move from the grand entrance into the corridor, luxurious design surrounds you—marble floors, rich wood panels, and bespoke terrazzo forming a refined foundation, while copper accents glimmer under soft, atmospheric lighting. Branded wallpaper adds a tailored touch, enhancing White Stone’s exclusivity. With each step, you’re drawn closer to the comfort of home. Just beyond, your private terrace offers a serene retreat, where panoramic city views and cool evening breezes provide the perfect escape, as the brilliance of city lights mirrors the tranquility of your space.

Opulent  
Corridor

A Journey Through Refined Luxury



Calm  
Refuge

Cityscape and Relaxation



# Exquisite Design

After a long day at work, you return to the embrace of your family in a living room that seamlessly blends luxury with coziness. The room, adorned with rich wooden flooring and elegant terrazzo, exudes an inviting warmth. The emerald green couch, paired with refined wooden furniture and gold accents, creates a perfect retreat for relaxation. Branded wallpaper enhances the sophisticated ambiance, while expansive windows, shielded by White Stone's signature louvers, frame breathtaking city views, balancing both privacy and openness.

Refined  
Living

Elegance in Every Detail



Living  
Room

1-Bedroom Apartment





Living  
Area

1-Bedroom Apartment



# Evening Bliss

As you move into the kitchen, the luxury and functionality continue seamlessly. Marble countertops gleam under soft lighting, while warm wood flooring and copper accents add an elegant touch. Harmonious color tones and sophisticated materials blend effortlessly, creating a serene yet inviting environment. The spacious, intimate kitchen invites you to prepare family meals, with the adjacent dining area featuring our exclusive wallpaper, adding a unique flair. This elegant space transforms everyday moments into cherished gatherings filled with connection and joy.

Gourmet  
Space

Sophisticated Dining Awaits



Refined  
Cooking

1-Bedroom Apartment



# Modern Serenity

As evening falls, you retreat to the bathroom—a sanctuary of simplicity and elegance. This thoughtfully designed space serves not only as a place for washing and relaxation but also as a refined powder room for your daily rituals. Terrazzo flooring adds a subtle texture underfoot, while the clean lines and minimalist fixtures create a serene atmosphere. It's a space where you can unwind in peace, leaving the day's stresses behind, all within an environment that perfectly balances contemporary style and comfort.

Elegant  
Simplicity

— Relax in Modern Comfort





# Comfort Meets Style

As morning light fills your bedroom, you wake to a serene space designed for comfort and elegance. The bedroom features generous windows that invite natural light and offer panoramic city views. Stepping into the spacious living room, you're greeted by more stunning vistas framed by floor-to-ceiling glass. Enjoy your coffee on the balcony, where sleek louvers provide privacy without compromising the breathtaking scenery. Every detail in your Velora apartment is crafted to balance transparency and privacy, enhancing your living experience with effortless sophistication.

Morning  
Serenity

Transparency Perfected



Chic  
Bedroom — 1-Bedroom Apartment





## Cozy Retreat

Sophisticated Design Meets Warmth



## Elegant Bedroom

— 2-Bedroom Apartment





Stylish  
Living

2-Bedroom Apartment



Premium  
Luxury

Timeless Style for Relaxing Moments



# Refined Culinary

As you move into the kitchen, morning light highlights its luxurious features. Marble countertops and a striking marble bar exude sophistication, while ashy wood cabinets blend seamlessly with the warm wooden flooring, creating a serene and inviting atmosphere. Branded wallpaper adds an exclusive touch, and copper accents gleam subtly. Large windows offer stunning views, making your morning routine a pleasure and enhancing the kitchen's refined elegance.

Dining  
Delight

Meals Made Memorable



Luxurious  
Kitchen — 2-Bedroom Apartment



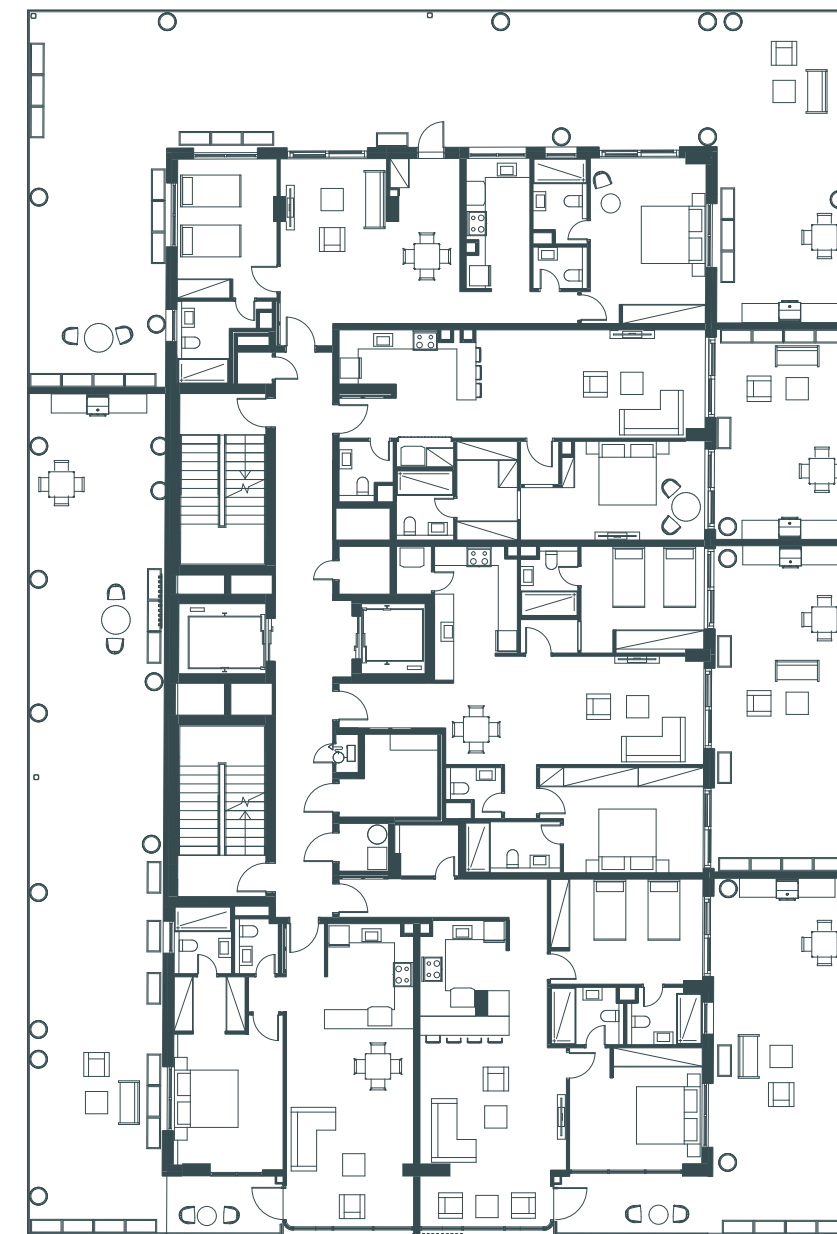






# Floor Plan First Floor

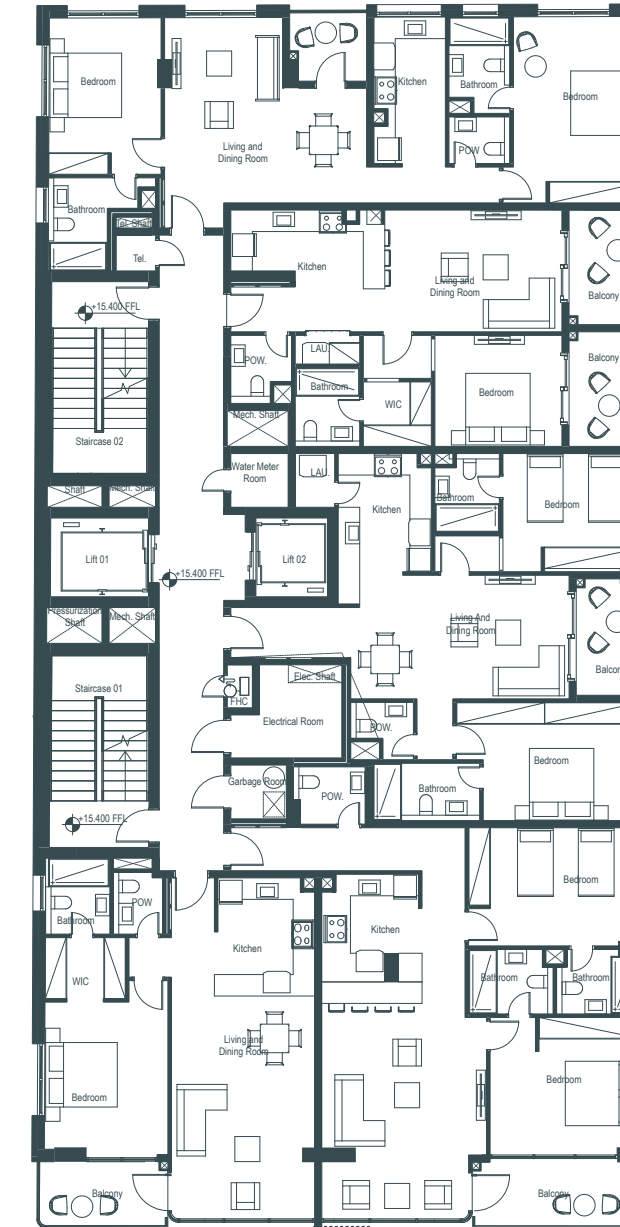
## Floor Plan First Floor





# Floor Plan Second Floor

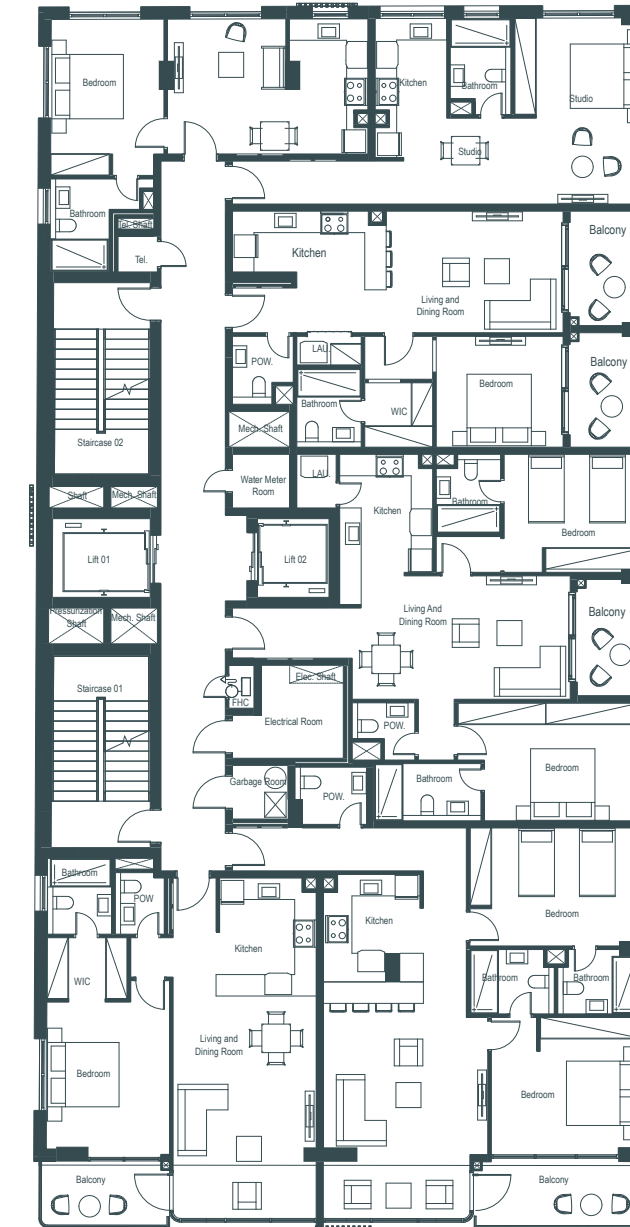
## Floor Plan Second Floor





## 44

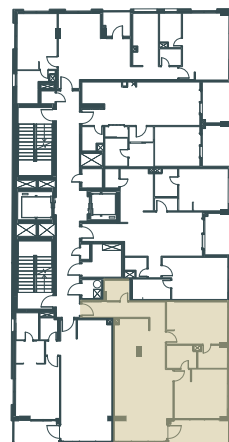
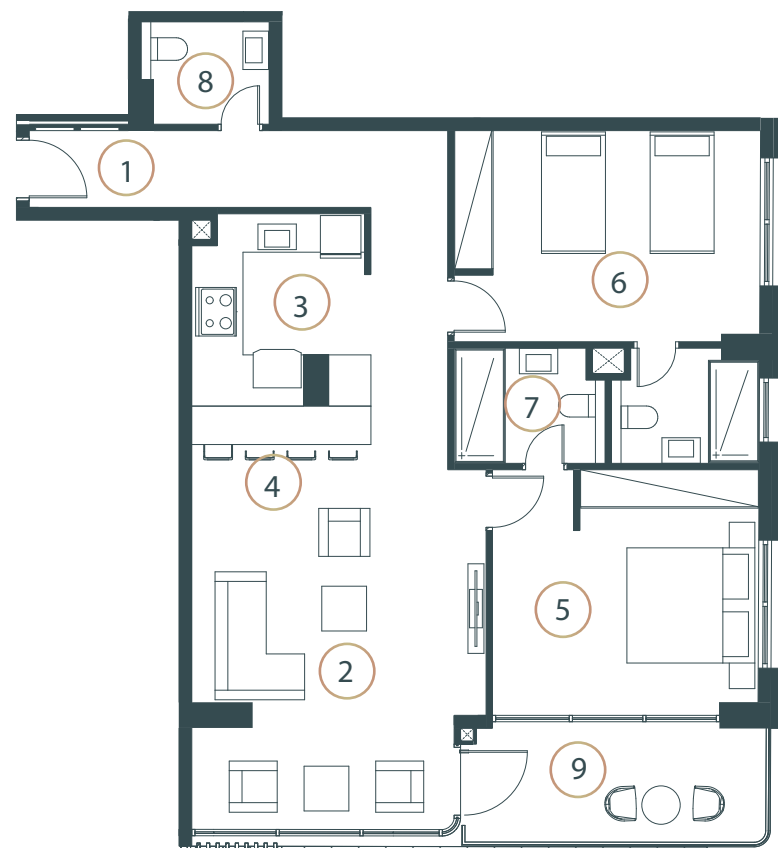
## 45





## Two Bedroom Apartment (A)

1170.25 Sq.ft. (108.72 Sq.m.) approx.



### SPACES

- ① Entrance Hall
- ② Living Room
- ③ Kitchen
- ④ Dining
- ⑤ Master Bedroom
- ⑥ Bedroom
- ⑦ Bathroom
- ⑧ Guest Bathroom
- ⑨ Balcony

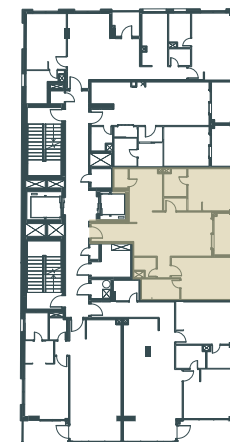
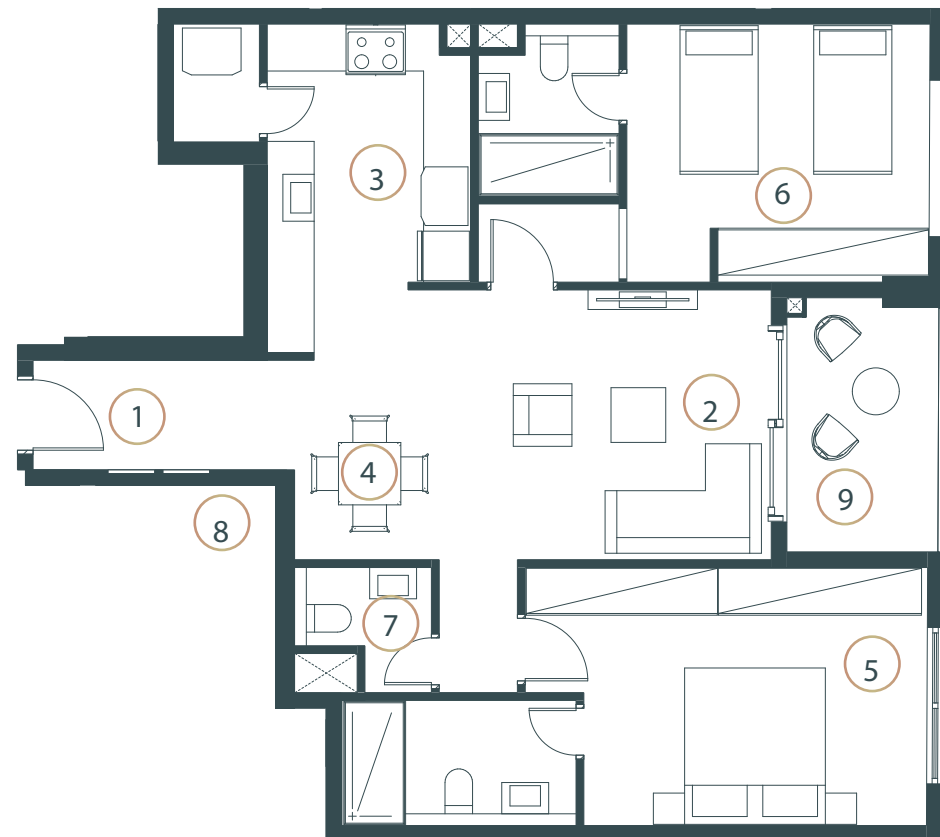
### TWO BEDROOM APARTMENT (TYPE A)

TOTAL FLOOR AREA : 1170.25 sq.ft. (108.72 sq.m.) approx.

This two-bedroom apartment (Type A) features a spacious living, kitchen, and dining area with floor-to-ceiling windows, inviting abundant natural light and offering stunning city views. Both bedrooms are generously sized, each with its own luxurious en-suite bathroom, ensuring privacy and comfort. A guest bathroom adds convenience for visitors.

## Two Bedroom Apartment (B)

1022.03 Sq.ft. (94.95 Sq.m.) approx.



### SPACES

- ① Entrance Hall
- ② Living Room
- ③ Kitchen
- ④ Dining
- ⑤ Master Bedroom
- ⑥ Bedroom
- ⑦ Bathroom
- ⑧ Guest Bathroom
- ⑨ Balcony

### TWO BEDROOM APARTMENT (TYPE B)

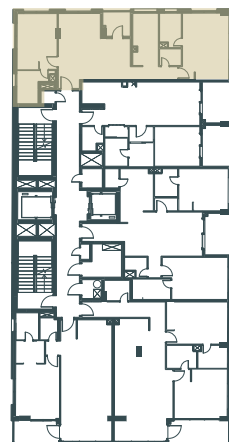
TOTAL FLOOR AREA : 1022.03 sq.ft. (94.95 sq.m.) approx.

This two-bedroom apartment (Type B) offers a spacious and functional layout. Both bedrooms feature their own en-suite bathrooms, providing privacy and convenience. The modern open living area connects to a stylish kitchen with a dining table, perfect for meals and gatherings. A 70 sqm balcony offers stunning views of Dubai's skyline, blending modern functionality with elegant living in Jumeirah Garden City.



## Two Bedroom Apartment (C)

1023.54 Sq.ft. (95.09 Sq.m.) approx.



### SPACES

- 1 Entrance Hall
- 2 Living Room
- 3 Kitchen
- 4 Dining
- 5 Master Bedroom
- 6 Bedroom
- 7 Bathroom
- 8 Guest Bathroom
- 9 Balcony

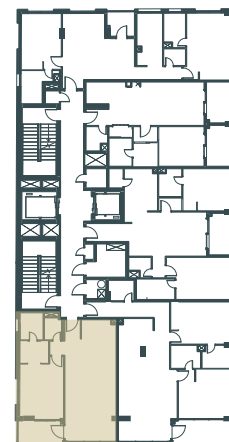
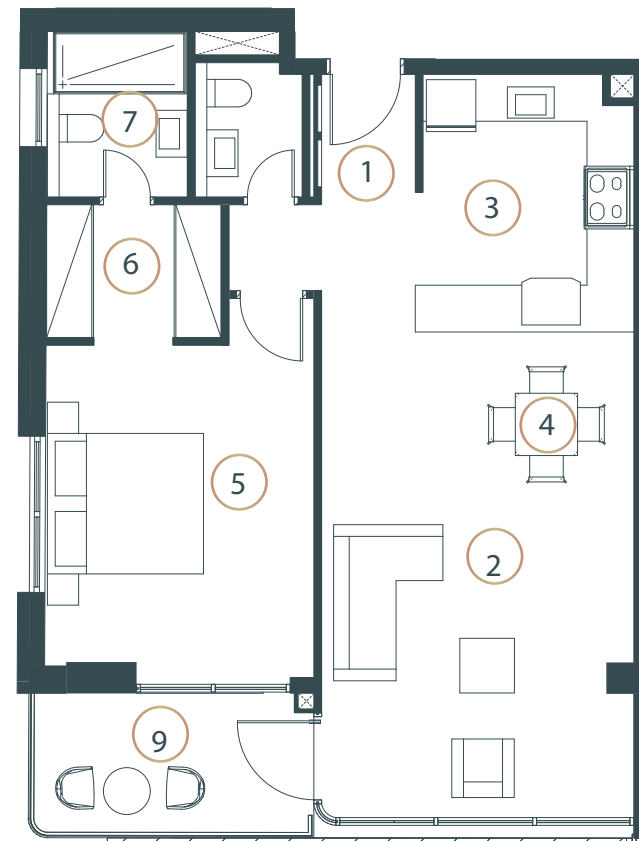
### TWO BEDROOM APARTMENT (TYPE C)

TOTAL FLOOR AREA : 1023.54 Sq.ft. (95.09 Sq.m.) approx.

The Type C two-bedroom residence at White Stone is a sophisticated urban retreat designed for modern living in the heart of Jumeirah Garden City. Offering a seamless blend of elegance and practicality, this layout features a thoughtfully designed open-plan living, dining, and kitchen area—ideal for both quiet evenings and stylish entertaining. Floor-to-ceiling windows frame the space, drawing in natural light and offering panoramic views of the vibrant cityscape beyond.

## One Bedroom Apartment (A)

831.94 Sq.ft. (77.29 Sq.m.) approx.



### SPACES

- 1 Entrance Hall
- 2 Living Room
- 3 Kitchen
- 4 Dining
- 5 Master Bedroom
- 6 Dressing Room
- 7 Bathroom
- 8 Guest Bathroom
- 9 Balcony

### TWO BEDROOM APARTMENT (TYPE A)

TOTAL FLOOR AREA : 831.94 Sq.ft. (77.29 Sq.m.) approx.

This One-bedroom apartment (Type A) offers a spacious and functional layout. Both bedrooms feature their own en-suite bathrooms, providing privacy and convenience. The modern open living area connects to a stylish kitchen with a dining table, perfect for meals and gatherings.



## One Bedroom Apartment (B)

830.76 Sq.ft (77.18 Sq.m) approx.



### SPACES

- 1 Entrance Hall
- 2 Living Room
- 3 Kitchen
- 4 Dining
- 5 Master Bedroom
- 6 Bedroom
- 7 Bathroom
- 8 Guest Bathroom
- 9 Balcony

### ONE BEDROOM APARTMENT (TYPE B)

TOTAL FLOOR AREA : 830.76 Sq.ft (77.18 Sq.m) approx.

This One-bedroom apartment (Type B) features a spacious living, kitchen, and dining area with floor-to-ceiling windows, inviting abundant natural light and offering stunning city views. Both bedrooms are generously sized, each with its own luxurious en-suite bathroom, ensuring privacy and comfort. A guest bathroom adds convenience for visitors.

## Studio Type (A)

509.13 Sq.ft (47.30 Sq.m) approx.



### SPACES

- 1 Entrance Hall
- 2 Living Room
- 3 Kitchen
- 4 Dining
- 5 Master Bedroom
- 6 Dressing Room
- 7 Bathroom
- 8 Guest Bathroom
- 9 Balcony

### STUDIO (TYPE A)

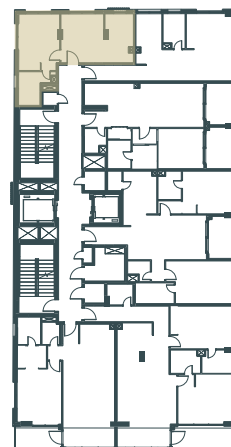
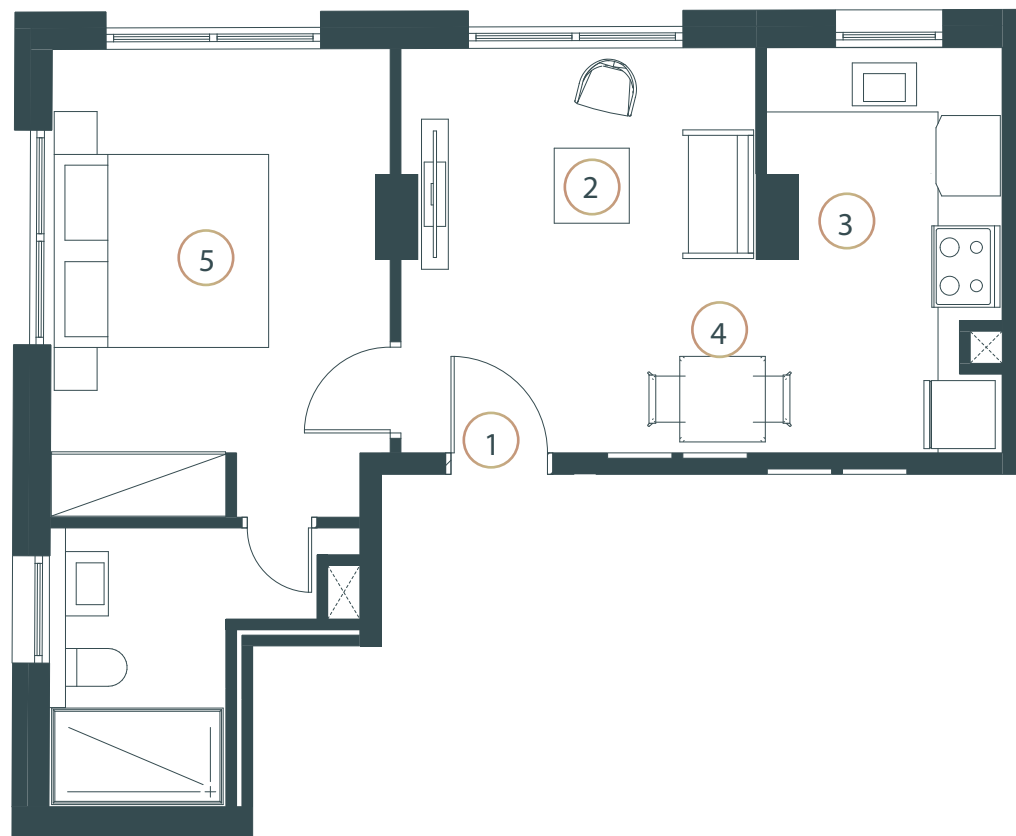
TOTAL FLOOR AREA : 509.13 Sq.ft (47.30 Sq.m) approx.

This Studio (Type B) offers a spacious and functional layout. bedroom feature their own en-suite bathrooms, providing privacy and convenience. The modern open living area connects to a stylish kitchen with a dining table, perfect for meals and gatherings.



## One Bedroom Apartment (C)

478.46 sq.fr. (44.45 sq.m.) approx.



### SPACES

- ① Entrance Hall
- ② Living Room
- ③ Kitchen
- ④ Dining
- ⑤ Master Bedroom
- ⑥ Bedroom
- ⑦ Bathroom
- ⑧ Guest Bathroom
- ⑨ Balcony

### ONE BEDROOM APARTMENT (TYPE C)

**TOTAL FLOOR AREA : 478.46 Sq.ft (44.45 Sq.m) approx.**

This Studio (Type B) features a spacious living, kitchen, and dining area with floor-to-ceiling windows, inviting abundant natural light and offering stunning city views. Both bedrooms are generously sized, each with its own luxurious en-suite bathroom, ensuring privacy and comfort. A guest bathroom adds convenience for visitors.

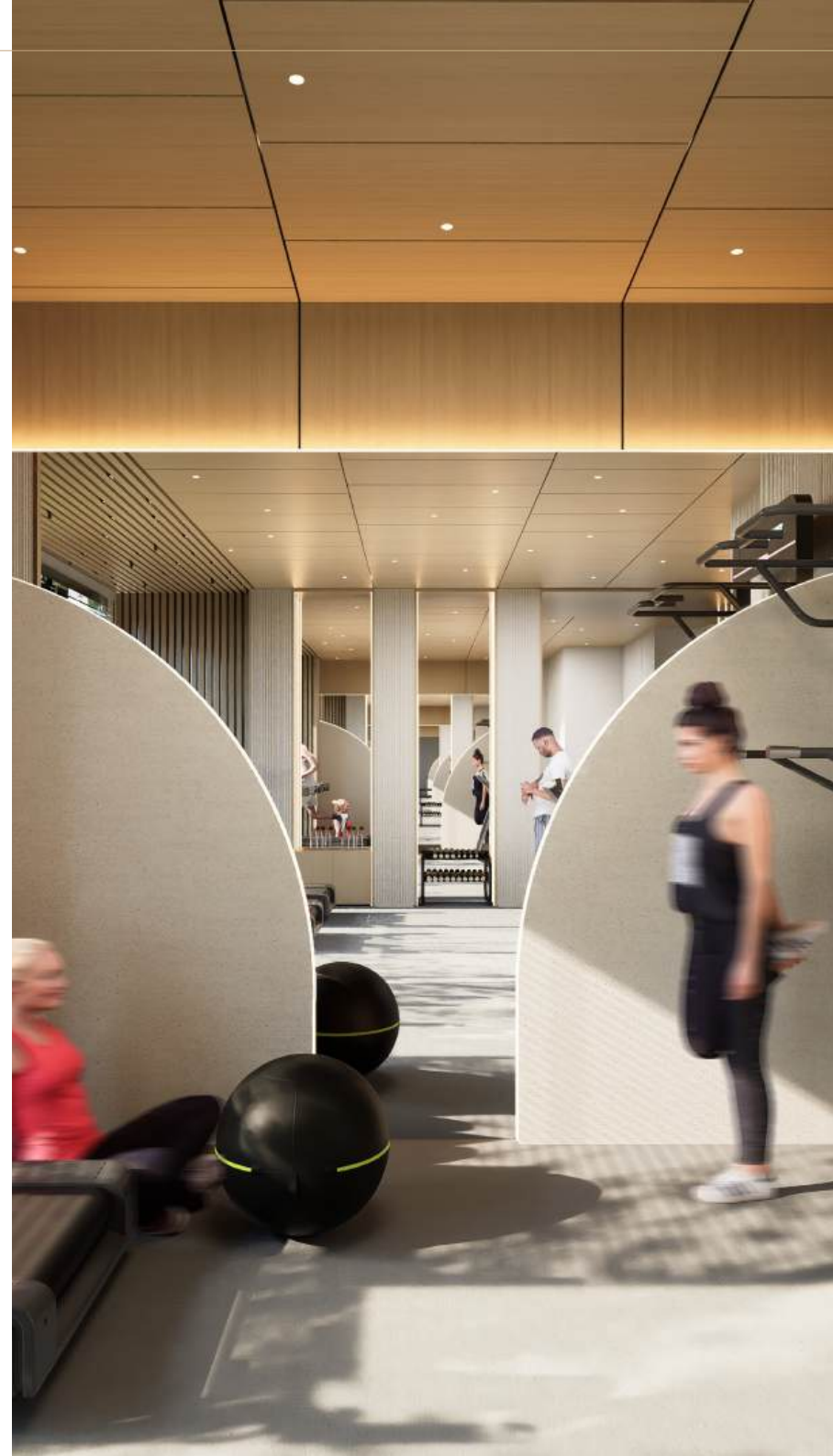


# The Rooftop Retreat

On a Saturday morning, you begin with a revitalizing workout at the rooftop gym. Following your exercise, you take a refreshing swim in the pool, where panoramic views of Dubai enhance your experience. As evening approaches, the BBQ area becomes the perfect setting for a relaxed gathering with friends under the stars. At White Stone, every detail is made to ensure your leisure time is both luxurious and memorable.

Elevated  
Wellness

Work Out, Wind Down

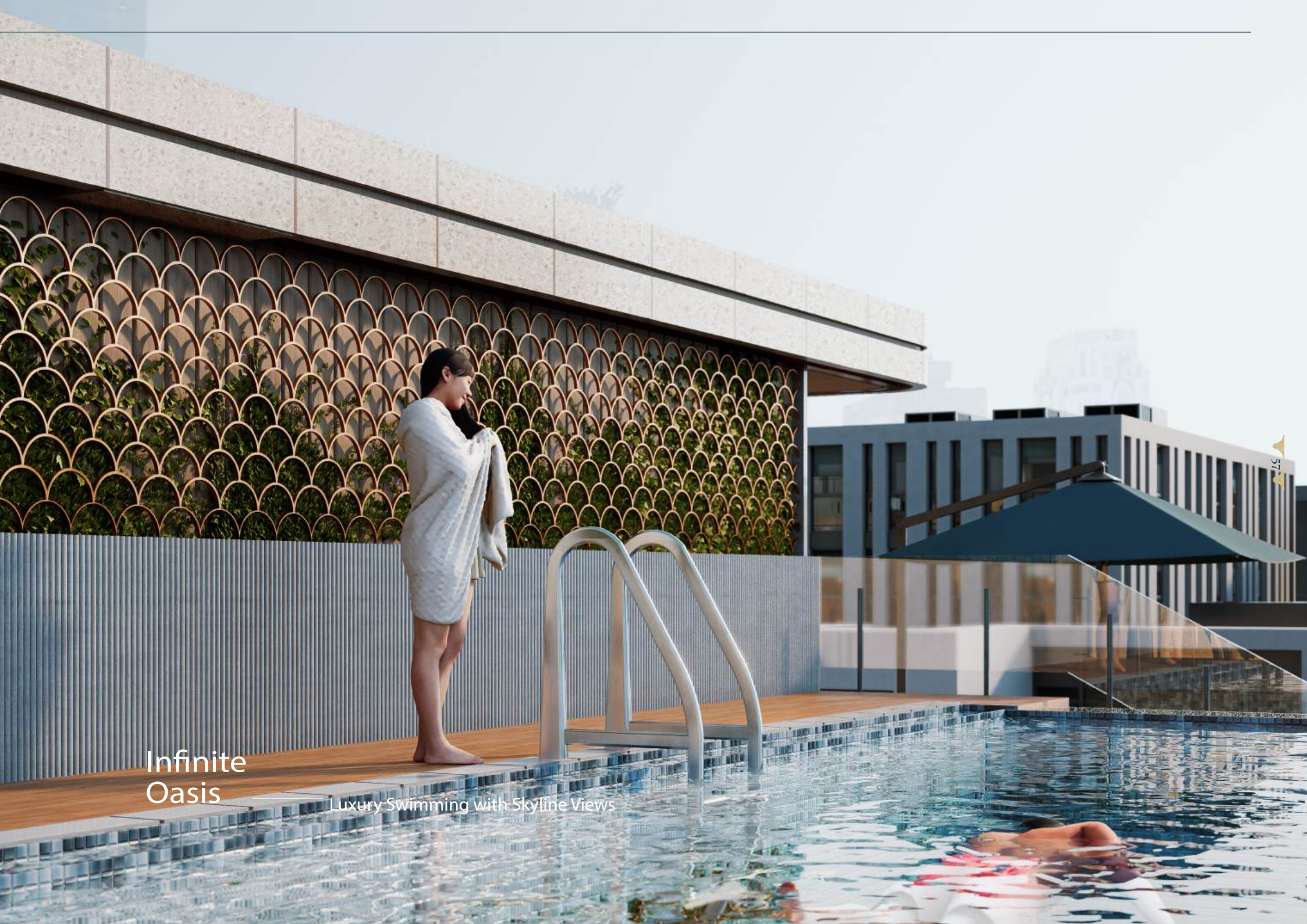






Poolside  
Fitness

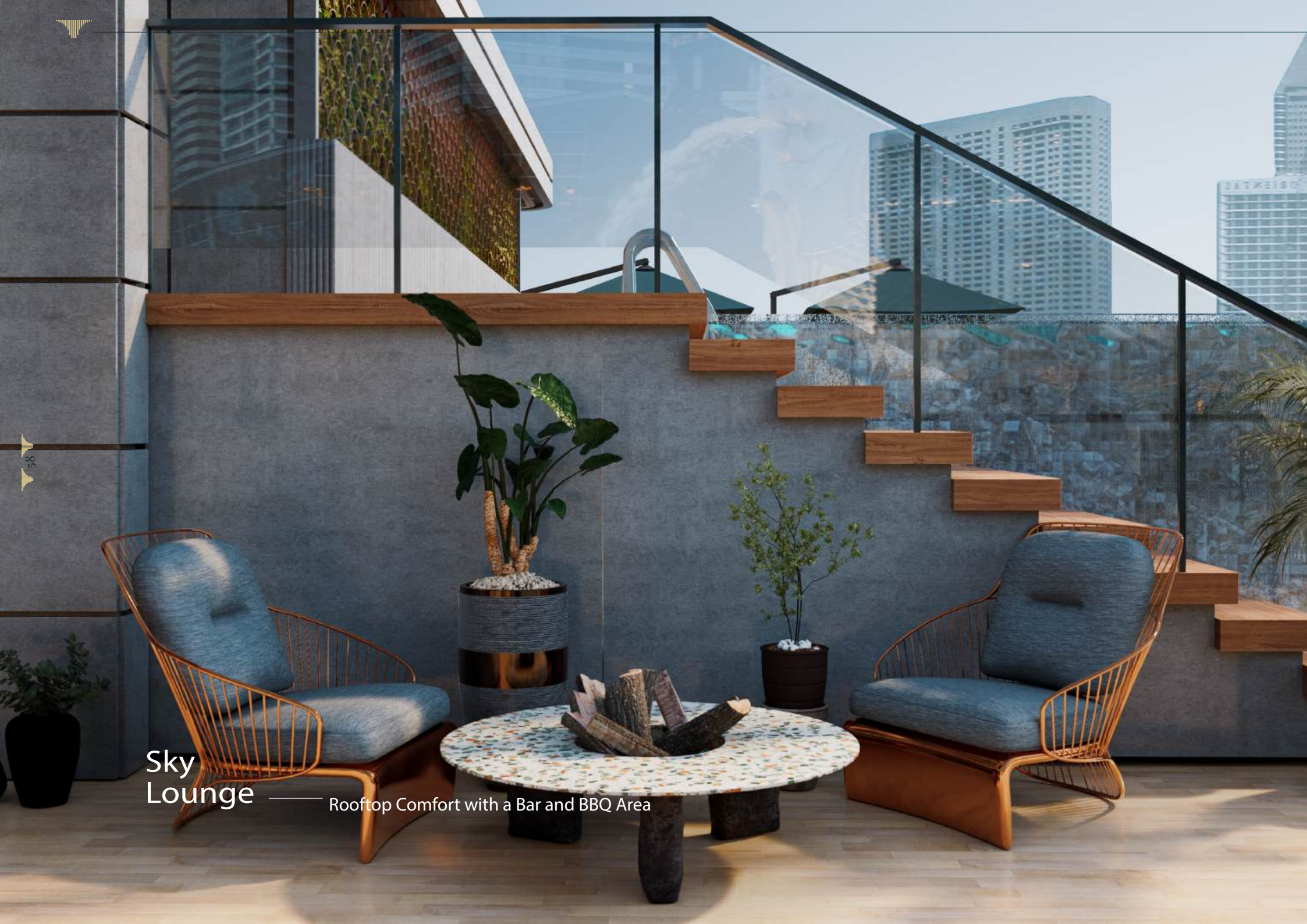
Workout with Inspiring Views



Infinite  
Oasis

Luxury Swimming with Skyline Views





## Sky Lounge

Rooftop Comfort with a Bar and BBQ Area



## Sky Bar

Elevated Drinks with Stunning Views






Elevated  
Lifestyle



Gym, Pool, and Rooftop Bliss in One View



Contact us now

## Contact

  +971505541636

  +971529999904

[Info@axiomprime.ae](mailto:Info@axiomprime.ae)

[www.Axiomprime.ae](http://www.Axiomprime.ae)



