

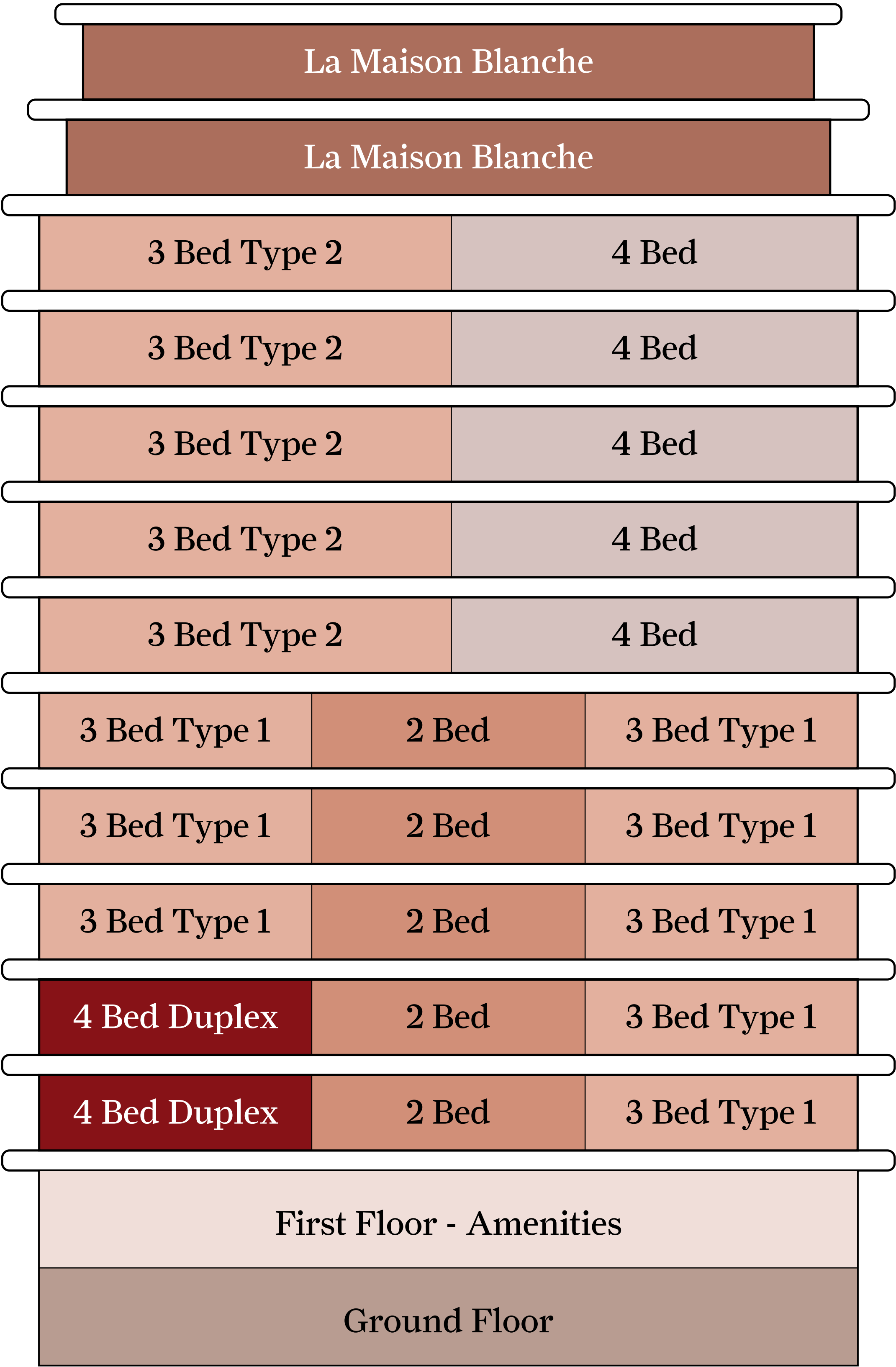
ALTA
REAL ESTATE DEVELOPMENT

Maison Margiela

Residences

PALM JUMEIRAH, DUBAI

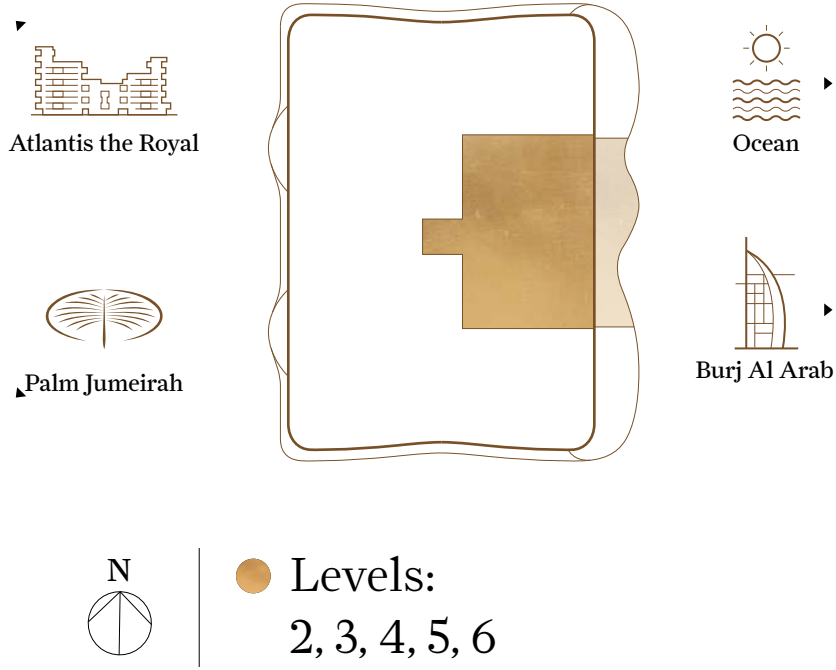
The Collection



2 Bedroom 5 Units 3 Bedroom 13 Units 4 Bedroom 5 Units Duplex 1 Unit La Maison Blanche 1 Unit

2 Bedroom

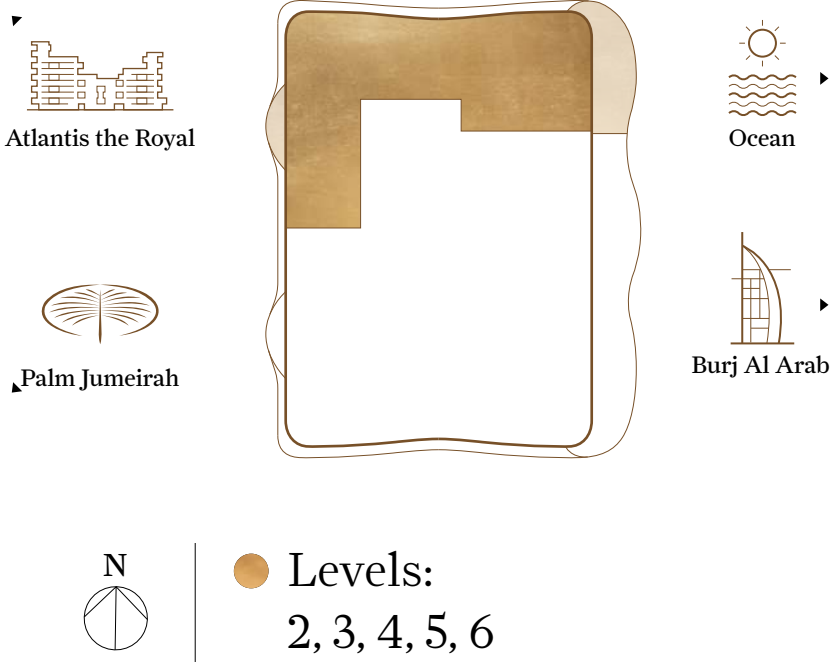
Total Area
From 2,572 to 2,727 sq ft
(from 239 to 253 sq m)



PH			13 th
			12 th
3BR - Type 2		4BR	11 th
3BR - Type 2		4BR	10 th
3BR - Type 2		4BR	9 th
3BR - Type 2		4BR	8 th
3BR - Type 2		4BR	7 th
3BR - Type 1	2BR	3BR - Type 1	6 th
3BR - Type 1	2BR	3BR - Type 1	5 th
3BR - Type 1	2BR	3BR - Type 1	4 th
Duplex 4BR + Office	2BR	3BR - Type 1	3 rd
			2 nd
Amenities			1 st
Lobby			G

3 Bedroom
Type-1 North

Total Area
From 3,585 to 3,682 sq ft
(from 333 to 342 sq m)

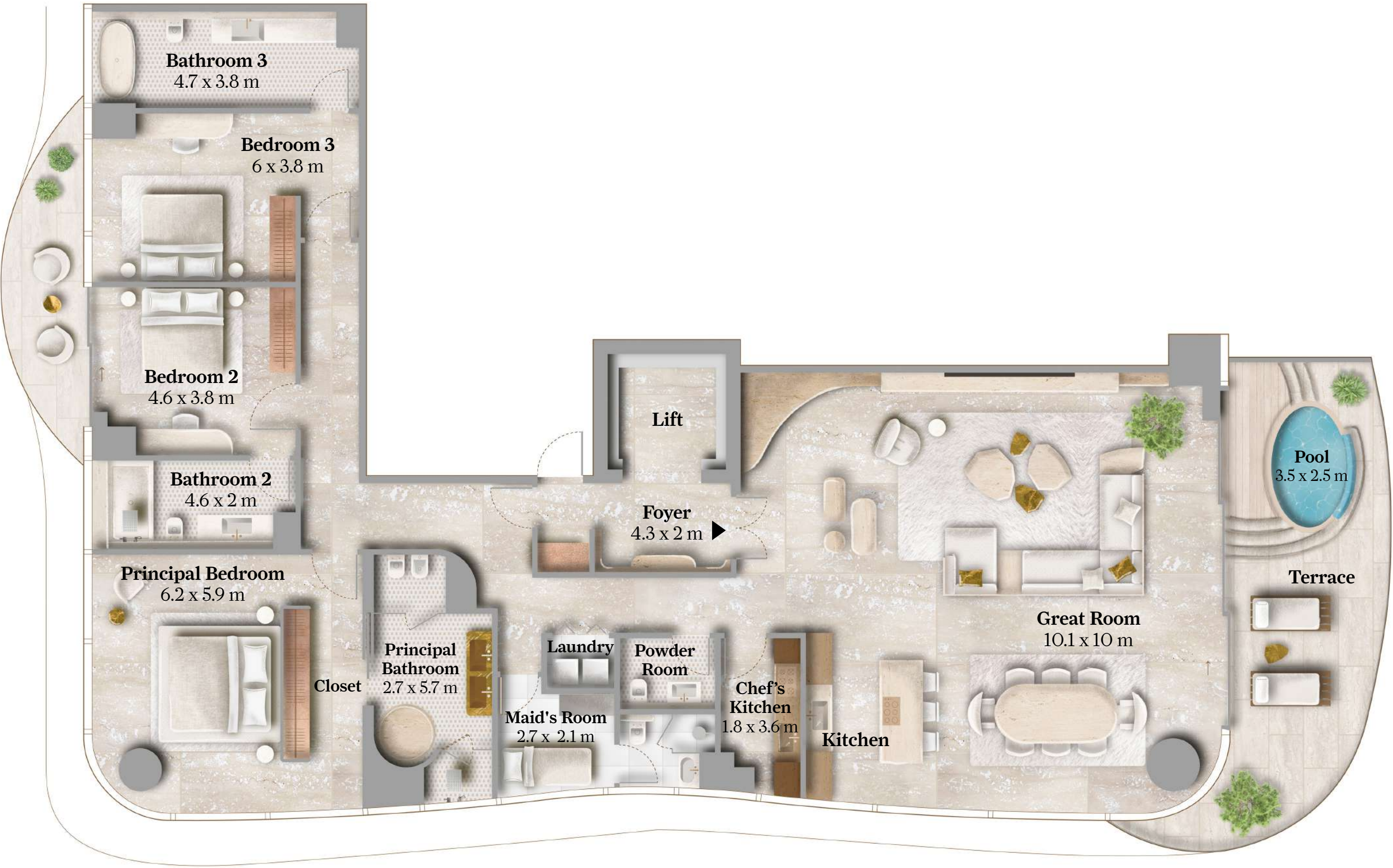
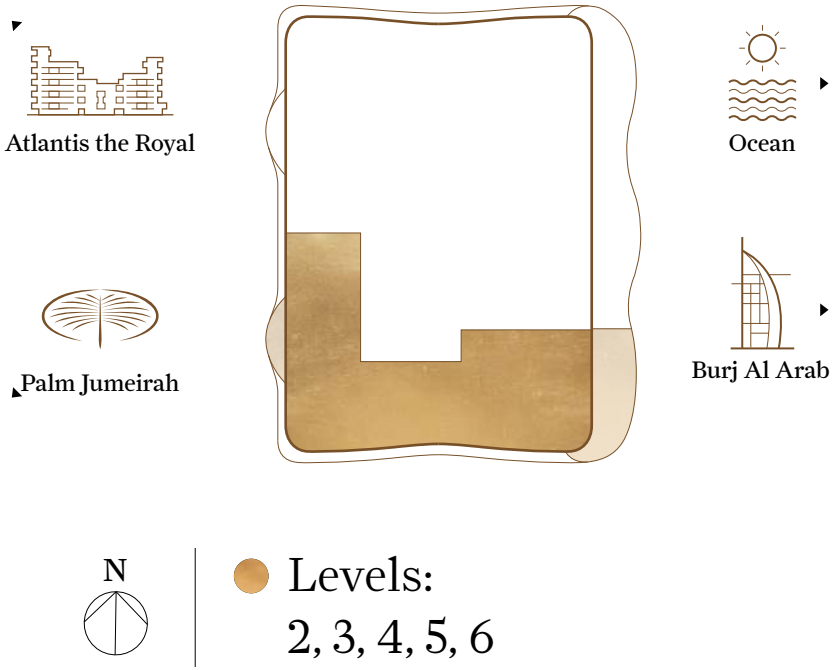


PH			13 th
			12 th
3BR - Type 2		4BR	11 th
3BR - Type 2		4BR	10 th
3BR - Type 2		4BR	9 th
3BR - Type 2		4BR	8 th
3BR - Type 2		4BR	7 th
3BR - Type 1	2BR	3BR - Type 1	6 th
3BR - Type 1	2BR	3BR - Type 1	5 th
3BR - Type 1	2BR	3BR - Type 1	4 th
Duplex 4BR + Office	2BR	3BR - Type 1	3 rd
			2 nd
Amenities			1 st
Lobby			G

All information in the layout depicts the current status of the project but may be subject to change once final approval from the authorities is obtained. Drawings are an artistic impression for marketing purposes and are not to scale. The size, shape, and position of windows, doors, ducts, columns, terraces, and balconies are subject to change during final coordination. The furniture is to indicate the available and the likely position of electrical points. It is not part of the standard fixtures.

3 Bedroom
Type-1 South

Total Area
From 3,662 to 3,664 sq ft
(~ 340 sq m)

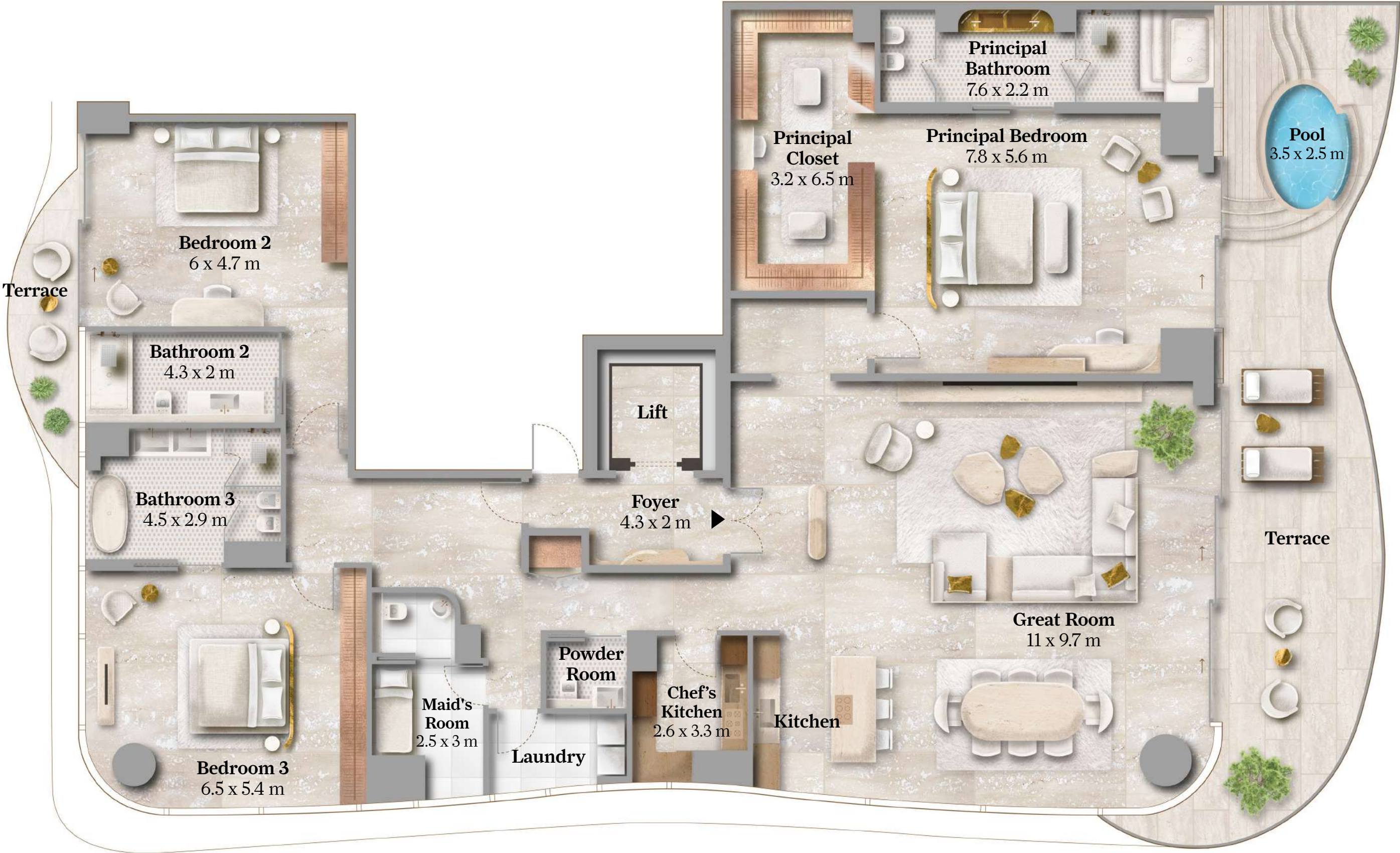
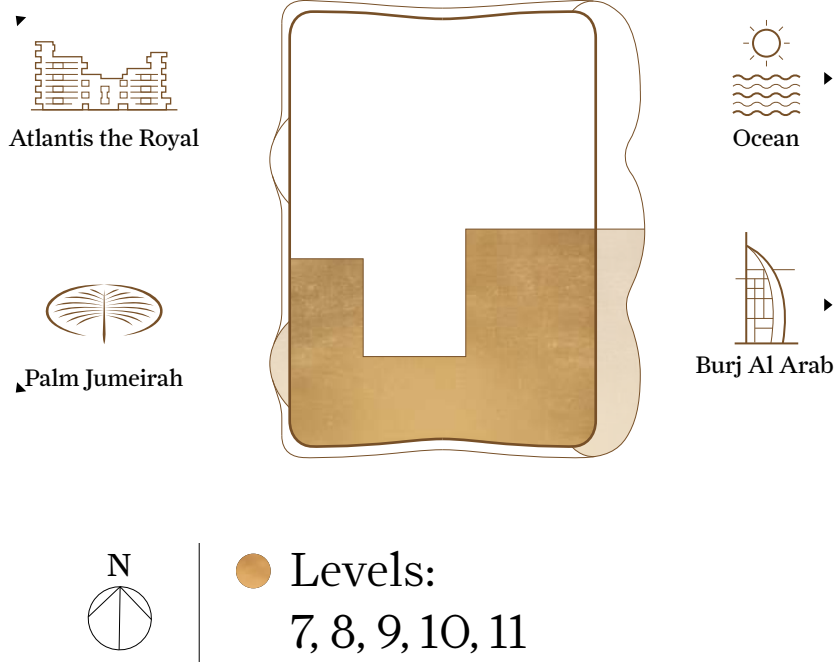


PH			13 th
			12 th
3BR - Type 2	4BR		11 th
3BR - Type 2	4BR		10 th
3BR - Type 2	4BR		9 th
3BR - Type 2	4BR		8 th
3BR - Type 2	4BR		7 th
3BR - Type 1	2BR	3BR - Type 1	6 th
3BR - Type 1	2BR	3BR - Type 1	5 th
3BR - Type 1	2BR	3BR - Type 1	4 th
Duplex 4BR + Office	2BR	3BR - Type 1	3 rd
			2 nd
Amenities			1 st
Lobby			G

All information in the layout depicts the current status of the project but may be subject to change once final approval from the authorities is obtained. Drawings are an artistic impression for marketing purposes and are not to scale. The size, shape, and position of windows, doors, ducts, columns, terraces, and balconies are subject to change during final coordination. The furniture is to indicate the available and the likely position of electrical points. It is not part of the standard fixtures.

3 Bedroom
Type-2

Total Area
From 4,699 to 4,847 sq ft
(from 437 to 450 sq m)

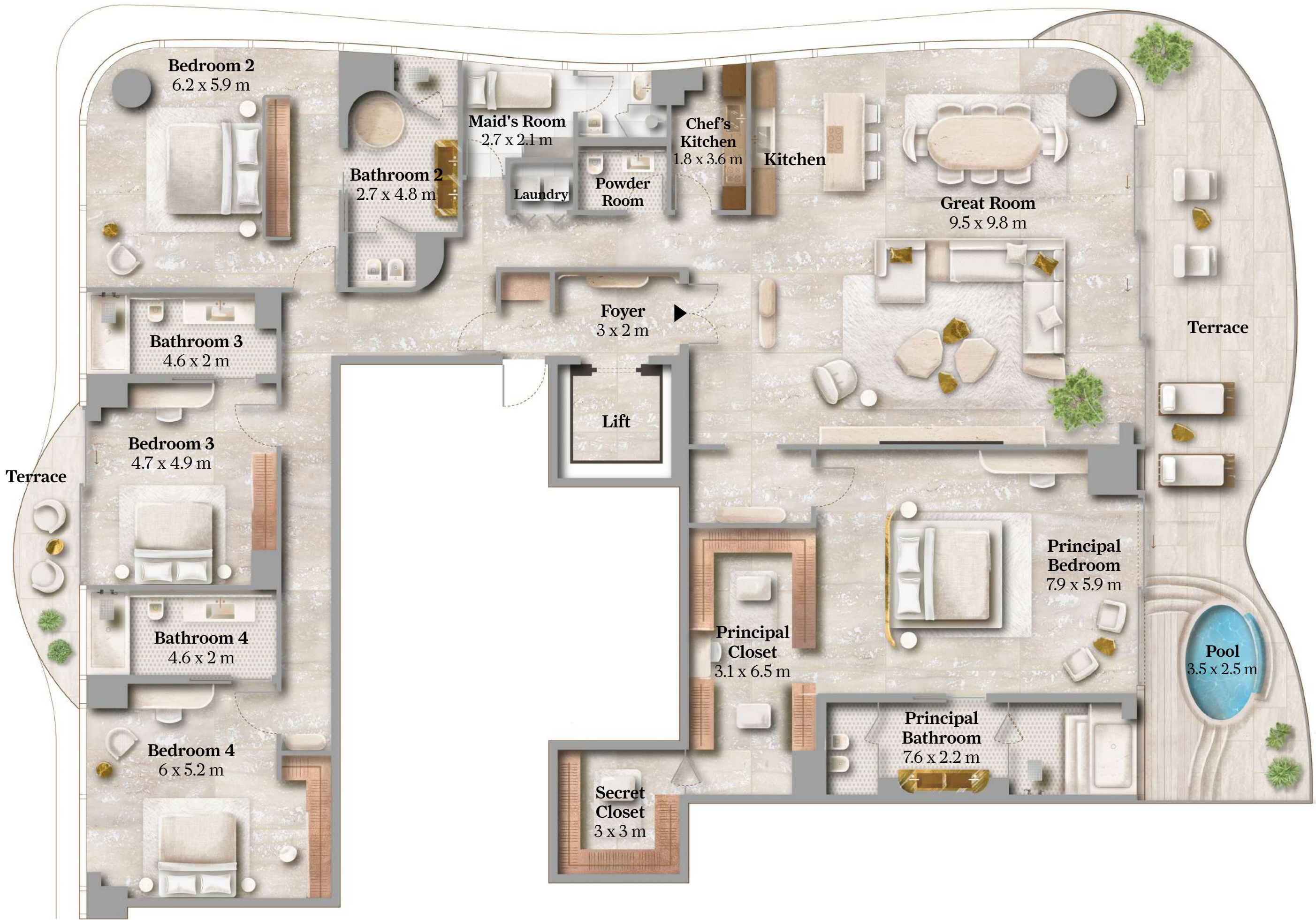
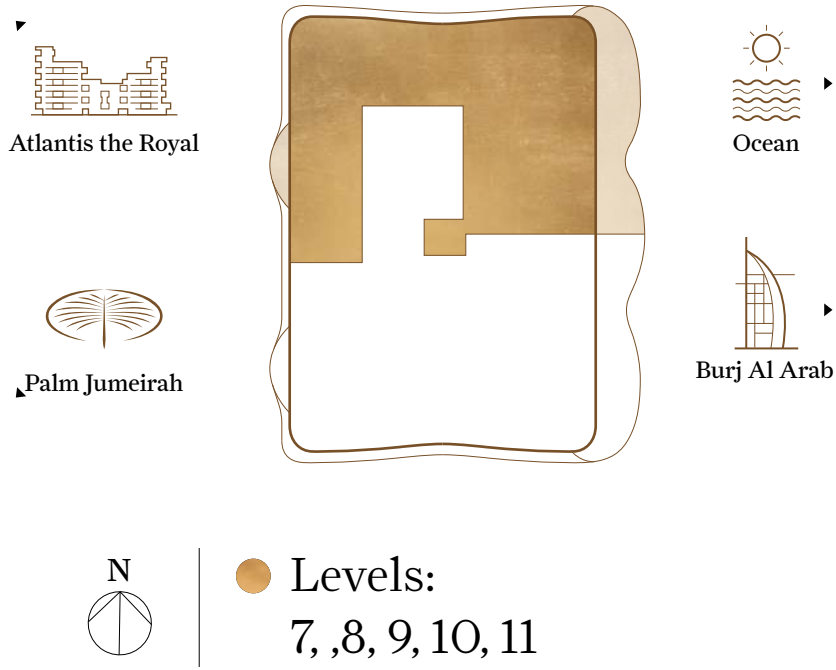


PH			13 th
3BR - Type 2	4BR		12 th
3BR - Type 2	4BR		11 th
3BR - Type 2	4BR		10 th
3BR - Type 2	4BR		9 th
3BR - Type 2	4BR		8 th
3BR - Type 2	4BR		7 th
3BR - Type 1	2BR	3BR - Type 1	6 th
3BR - Type 1	2BR	3BR - Type 1	5 th
3BR - Type 1	2BR	3BR - Type 1	4 th
Duplex 4BR + Office	2BR	3BR - Type 1	3 rd
Amenities			1 st
Lobby			G

All information in the layout depicts the current status of the project but may be subject to change once final approval from the authorities is obtained. Drawings are an artistic impression for marketing purposes and are not to scale. The size, shape, and position of windows, doors, ducts, columns, terraces, and balconies are subject to change during final coordination. The furniture is to indicate the available and the likely position of electrical points. It is not part of the standard fixtures.

4 Bedroom

Total Area
From 5,207 to 5,304 sq ft
(from 484 to 493 sq m)



PH			13 th
3BR - Type 2	4BR		12 th
3BR - Type 2	4BR		11 th
3BR - Type 2	4BR		10 th
3BR - Type 2	4BR		9 th
3BR - Type 2	4BR		8 th
3BR - Type 2	4BR		7 th
3BR - Type 1	2BR	3BR - Type 1	6 th
3BR - Type 1	2BR	3BR - Type 1	5 th
3BR - Type 1	2BR	3BR - Type 1	4 th
Duplex 4BR + Office	2BR	3BR - Type 1	3 rd
Amenities			1 st
Lobby			G

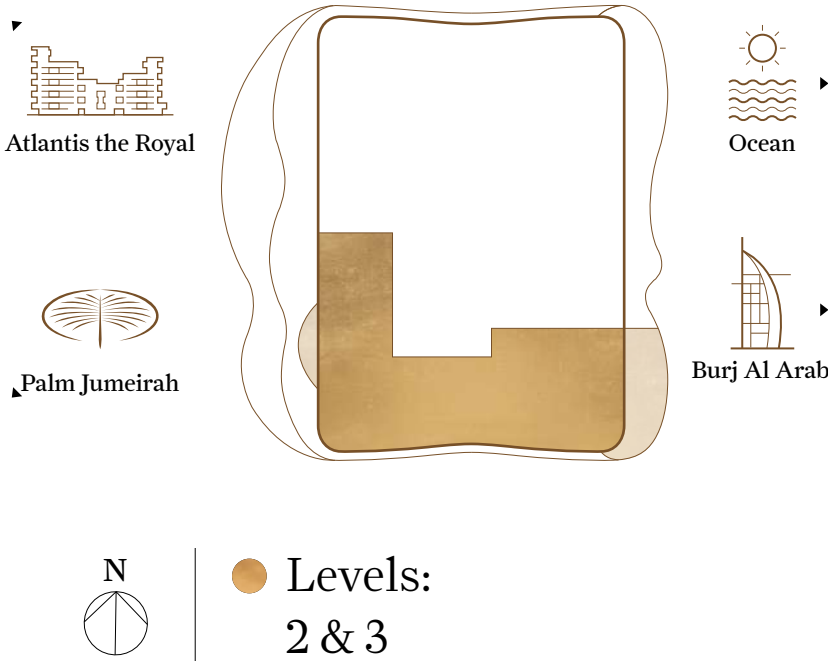
All information in the layout depicts the current status of the project but may be subject to change once final approval from the authorities is obtained. Drawings are an artistic impression for marketing purposes and are not to scale. The size, shape, and position of windows, doors, ducts, columns, terraces, and balconies are subject to change during final coordination. The furniture is to indicate the available and the likely position of electrical points. It is not part of the standard fixtures.

Duplex
4 Bedroom

Internal Area
6,006 sq ft (558 sq m)

External Area
737 sq ft (68 sq m)

Total Area
6,743 sq ft (626 sq m)



Lower Level



Upper Level



PH			13 th
3BR - Type 2	4BR		12 th
3BR - Type 2	4BR		11 th
3BR - Type 2	4BR		10 th
3BR - Type 2	4BR		9 th
3BR - Type 2	4BR		8 th
3BR - Type 2	4BR		7 th
3BR - Type 1	2BR	3BR - Type 1	6 th
3BR - Type 1	2BR	3BR - Type 1	5 th
3BR - Type 1	2BR	3BR - Type 1	4 th
Duplex 4BR + Office	2BR	3BR - Type 1	3 rd
	2BR	3BR - Type 1	2 nd
Amenities			1 st
Lobby			G

La Maison
Blanche
Lower Level

Internal Area
9,475 sq ft (880 sq m)

External Area
9,328 sq ft (867 sq m)

Total Area
18,803 sq ft (1,747 sq m)



Atlantis the Royal



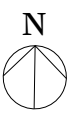
Palm Jumeirah



Ocean



Burj Al Arab



Level:
12



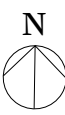
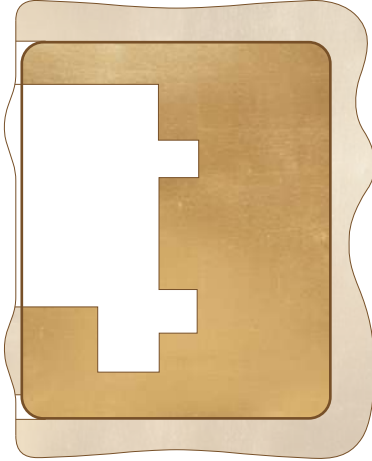
PH			13 th
3BR - Type 2			4BR
3BR - Type 2			4BR
3BR - Type 2			4BR
3BR - Type 2			4BR
3BR - Type 2			4BR
3BR - Type 1			2BR
3BR - Type 1			2BR
3BR - Type 1			2BR
3BR - Type 1			2BR
Duplex 4BR + Office			2BR
Amenities			1 st
Lobby			G

La Maison
Blanche
Upper Level

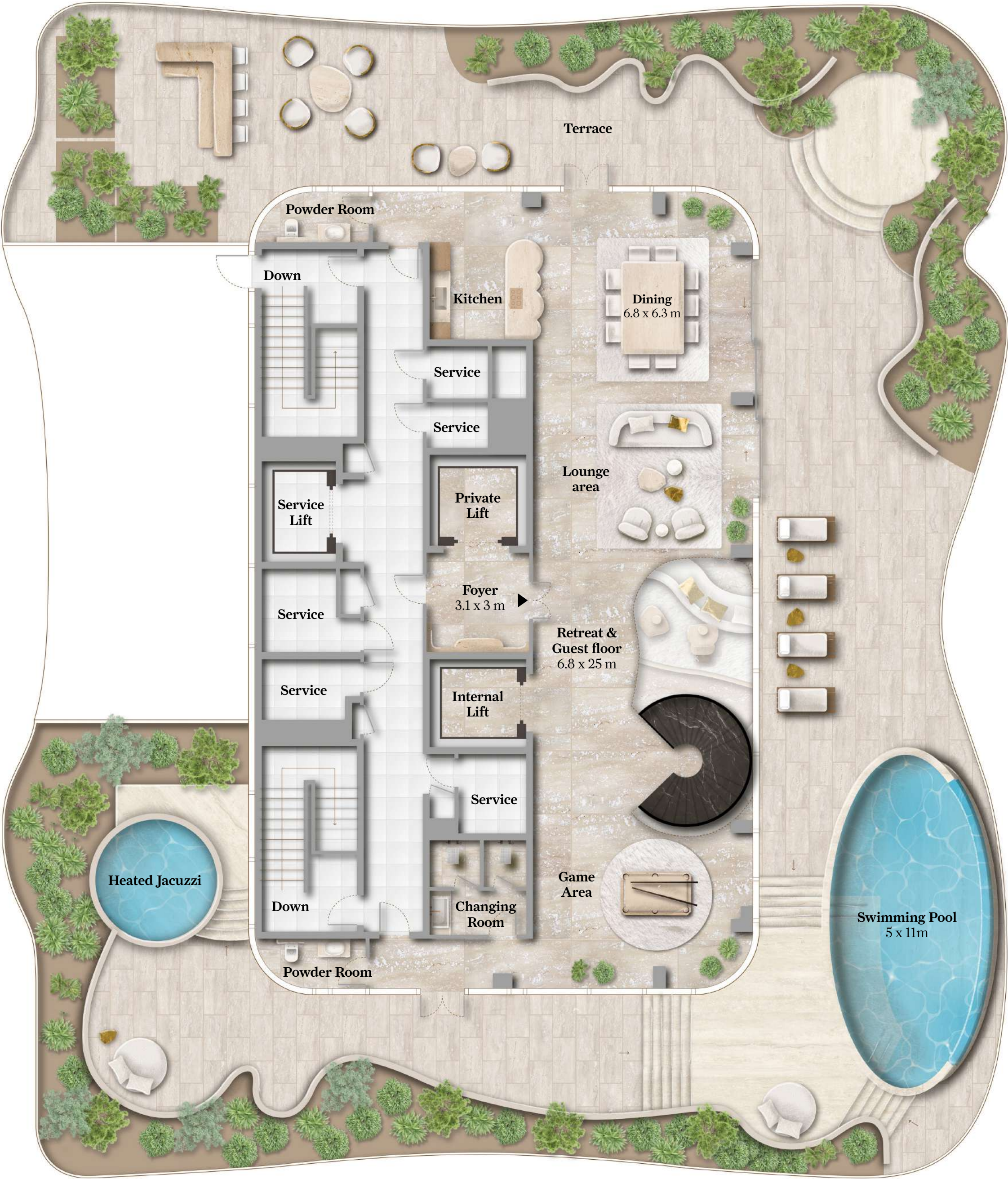
Internal Area
9,475 sq ft (880 sq m)

External Area
9,328 sq ft (867 sq m)

Total Area
18,803 sq ft (1,747 sq m)



Level:
13



PH			13 th
3BR - Type 2	4BR		12 th
3BR - Type 2	4BR		11 th
3BR - Type 2	4BR		10 th
3BR - Type 2	4BR		9 th
3BR - Type 2	4BR		8 th
3BR - Type 2	4BR		7 th
3BR - Type 1	2BR	3BR - Type 1	6 th
3BR - Type 1	2BR	3BR - Type 1	5 th
3BR - Type 1	2BR	3BR - Type 1	4 th
Duplex 4BR + Office	2BR	3BR - Type 1	3 rd
Amenities			1 st
Lobby			G

All information in the layout depicts the current status of the project but may be subject to change once final approval from the authorities is obtained. Drawings are an artistic impression for marketing purposes and are not to scale. The size, shape, and position of windows, doors, ducts, columns, terraces, and balconies are subject to change during final coordination. The furniture is to indicate the available and the likely position of electrical points. It is not part of the standard fixtures.

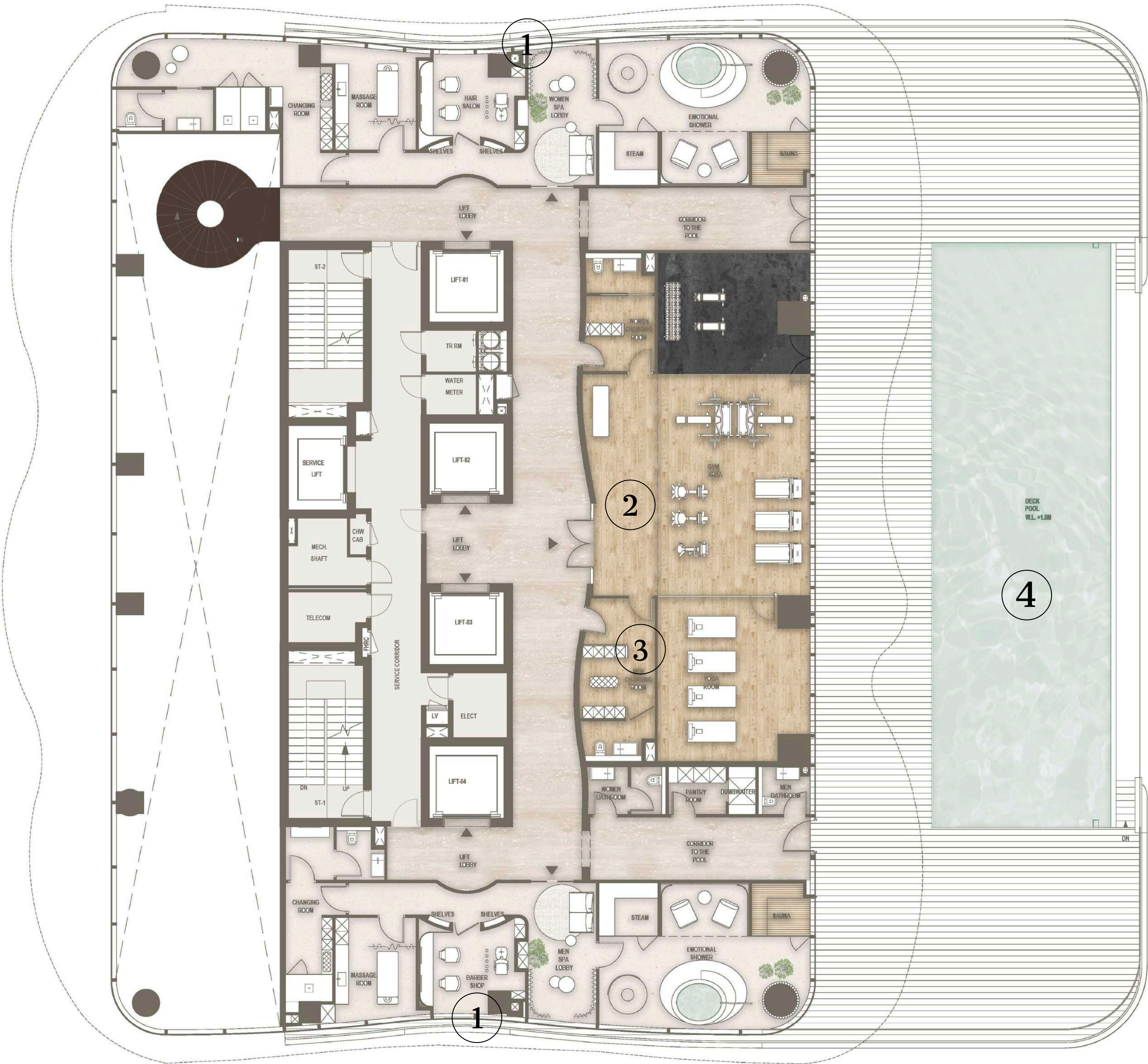
First Floor

1. Male & Female Spas

 - Steam
 - Sauna
 - Salons
 - Massage Rooms
2. Gym

3. Yoga Studio

4. Outdoor Pool



Ground
Floor

1. Reception Lobby

2. Private Meeting Room

3. Cinema

4. Curated Library
5. Relaxation Lounge

6. Maison Margiela Art Gallery

7. Residents' Café

8. Residents' Lounge

