

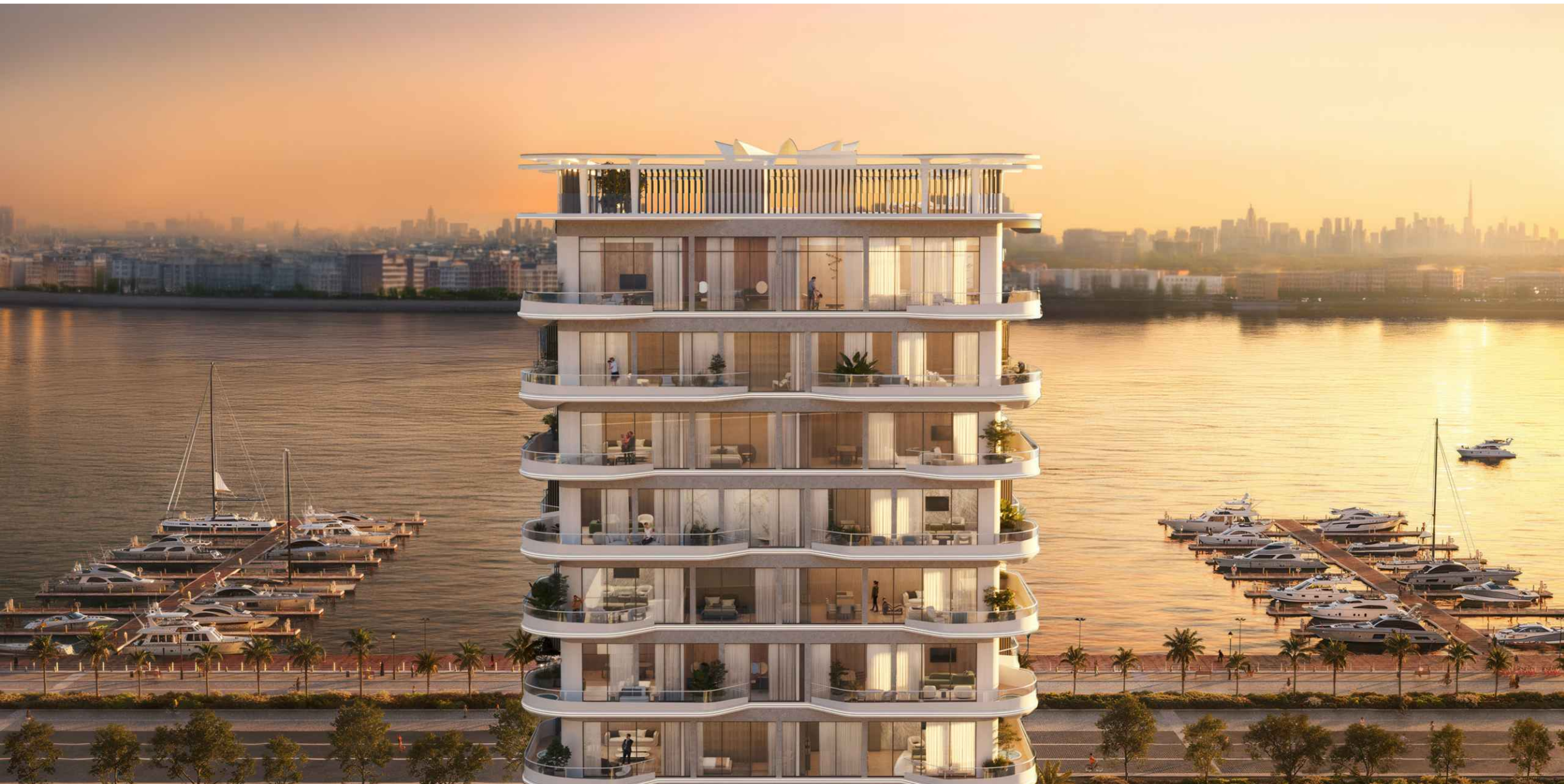


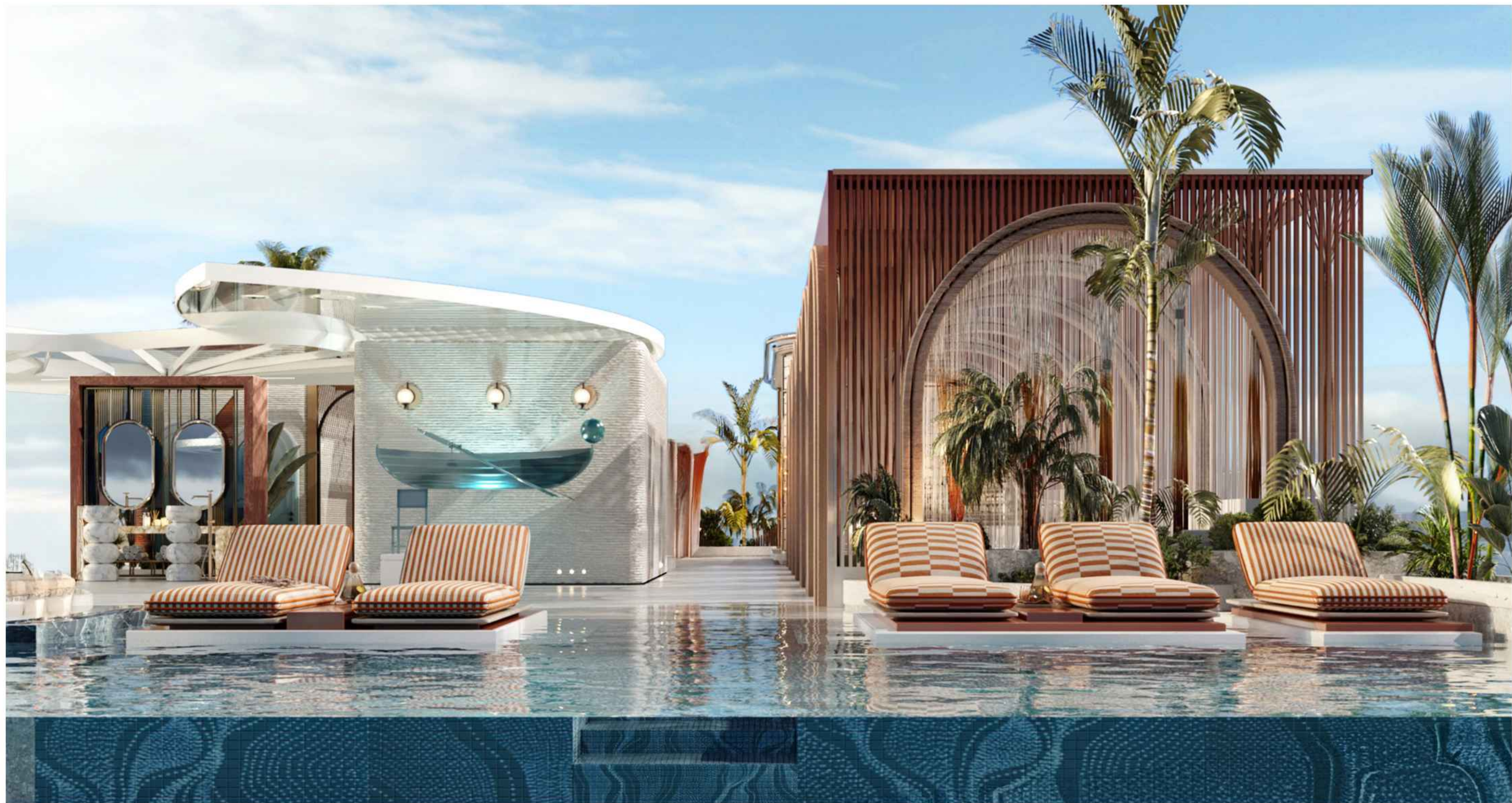
CITI
DEVELOPERS

ARYA

RESIDENCES

THE ART OF NEO LUXURY







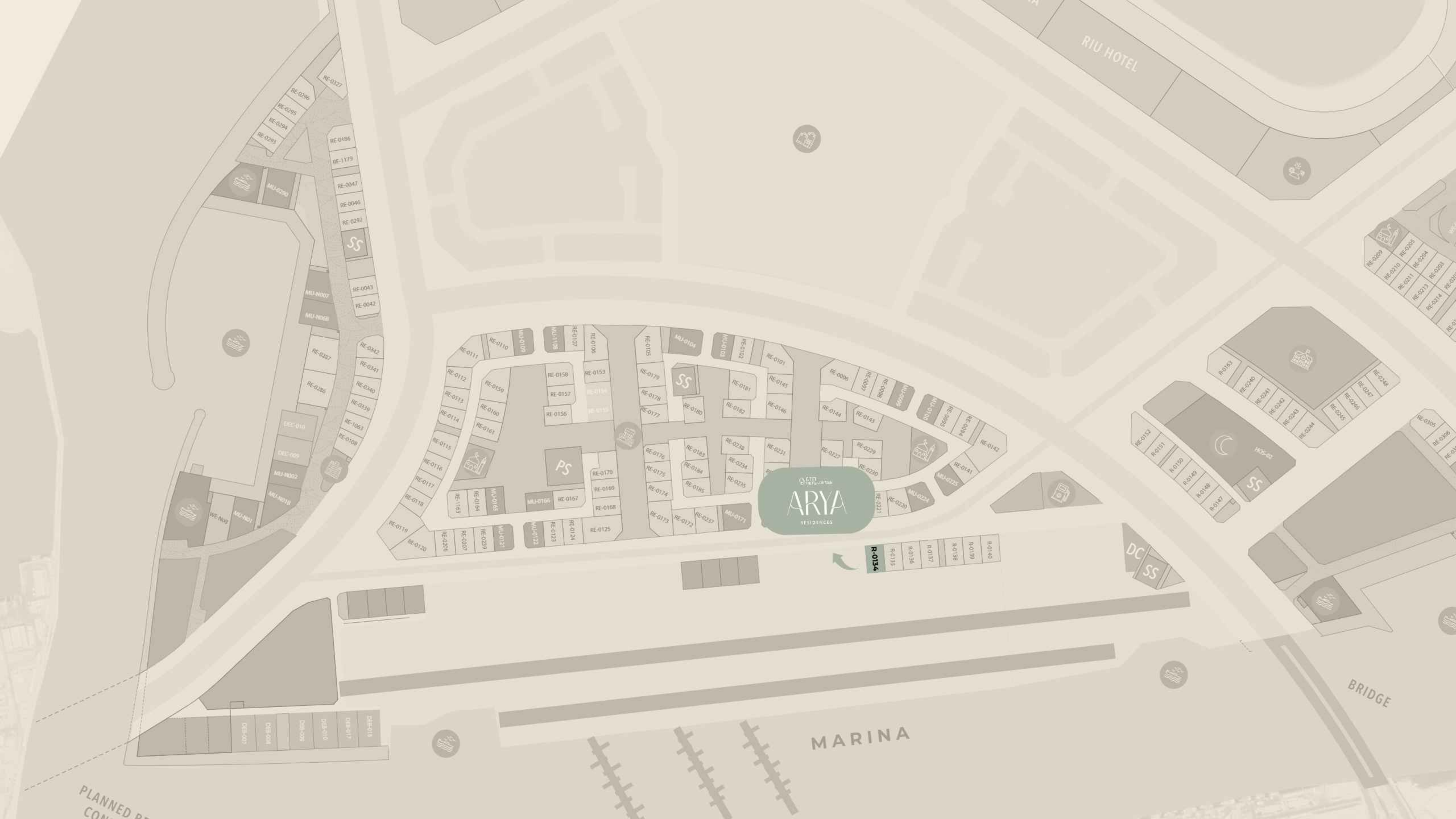
ARYA

G



An aerial photograph of the Dubai Islands, showing several artificial islands in the Persian Gulf. The islands are densely packed with greenery, buildings, and infrastructure. A semi-transparent map of the islands is overlaid on the image, highlighting the specific islands shown in the aerial view. The text "DUBAI ISLANDS" is centered over the map in a large, white, serif font.

DUBAI ISLANDS





ART OF

- **21 km** shoreline
- **9** World-Class Marinas
- **86** Design-Led Resorts and Hotels
- **2** Championship-Level Golf Courses

WATERFRONT LIVING

THE ARCHITECTURE

ARYA



SIGNATURE AMENITIES.

THE ELEVENTH SKY ROOFTOP

- › Horizon-edge infinity pool with private cabanas
- › Plunge pools with lounging enclaves
- › Sunken bar suspended over water
- › Rooftop bar
- › Al fresco social lounges

THE FORTE FIRST FLOOR

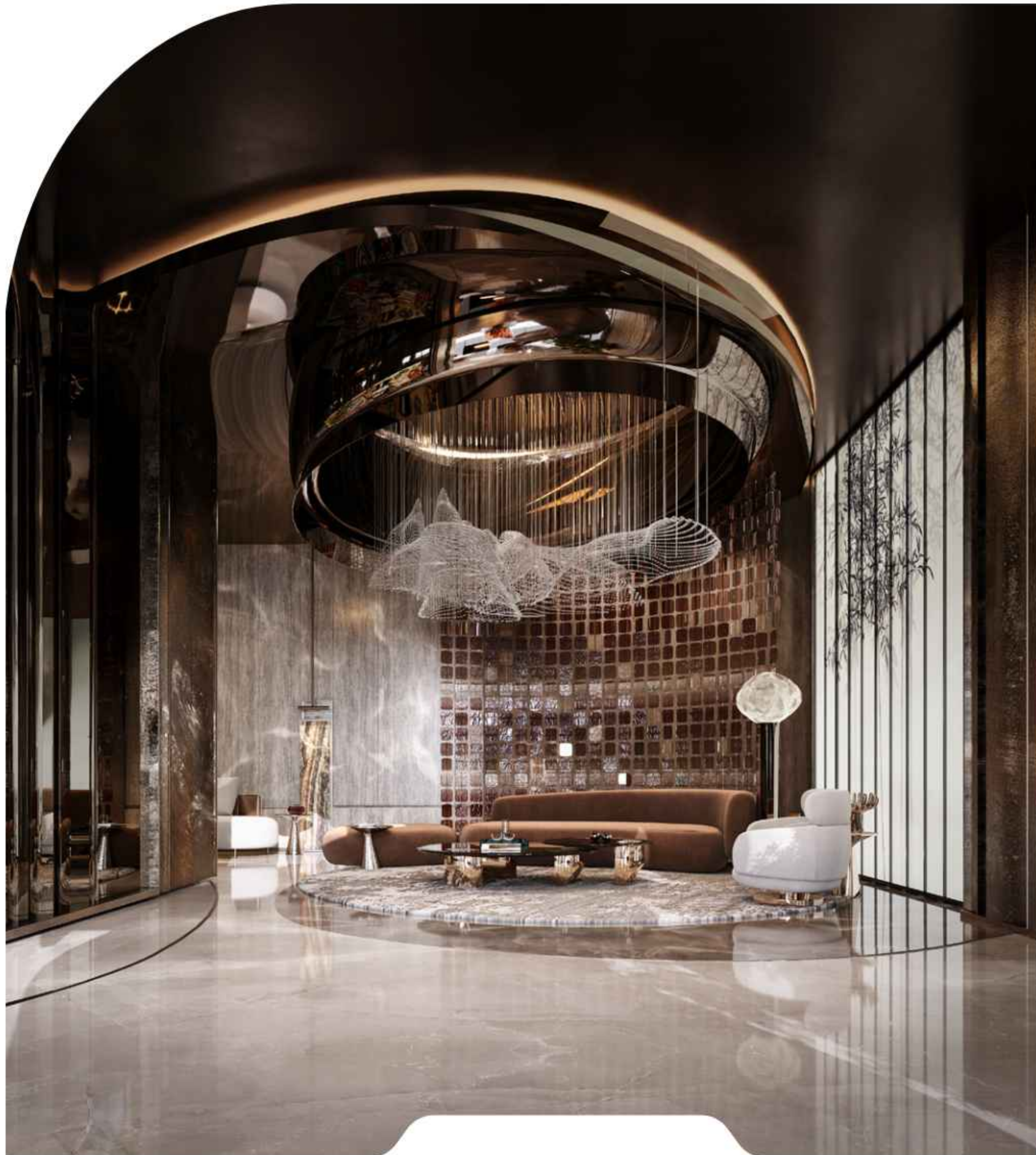
- › Bespoke Men's & Women's Hamams
- › Dedicated Roman Bath Suites
- › Private Spa Suites with massage rooms
- › Wellness Chambers: Sauna Steam | Recovery Lounges
- › Infinity pool with cabanas + children's water play zone
- › Poolside bar and sunken conversation pits
- › Outdoor Yoga Deck nestled in green canopy
- › Immersive Private Cinema
- › Interactive Game Zone
- › Fitness Pavilion

THE GALORE GROUND FLOOR

- › Grand Arrival Lobby with concierge
- › Executive Business Lounge

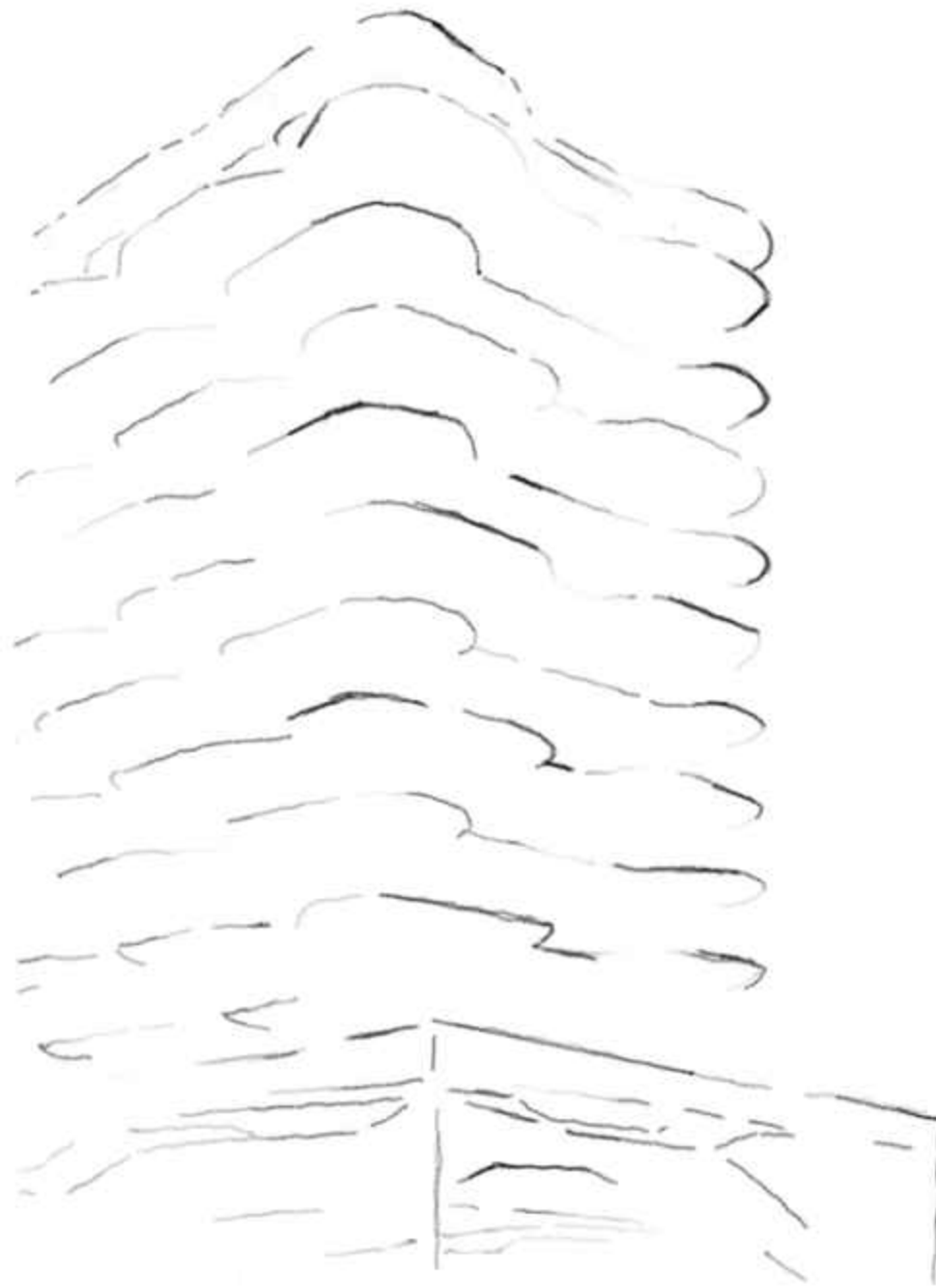
THE UNDER CANVAS MEZZANINE FLOOR

- › Cigar Lounge



BUILDING CONFIGURATION.

A masterpiece of modern architecture in our building configuration, boasting a Ground floor, **2 Podiums** and **10 floors** of sophisticated residences, offering a total of **68 exclusive units**.



G+2P+10+R
TOTAL UNITS: 68



PREMIUM FEATURES.

- [Marina View](#)
- [Fully Furnished Apartments with Custom Furniture](#)
- [Miele Appliances | Villeroy & Boch Cutlery](#)
- [All Décor Pieces Included](#)
- [All Electronic Appliances Included](#)
- [All Apartments Include a Personal Assistant Robot](#)
- [IoT-Enabled Building & Apartments](#)
- [Sky Pools in All Apartments](#)





PROXIMITY.

- **1-minute** walk to the Marina
- **2-minutes** drive to the Beach
- **3-minutes** walk to the Retail Boulevard
- **10-minutes** drive to Dubai International Airport
- **15-minutes** drive to Downtown Dubai

UNIT TYPES.

One-Bedroom
Apartments

Two-Bedroom
Apartments

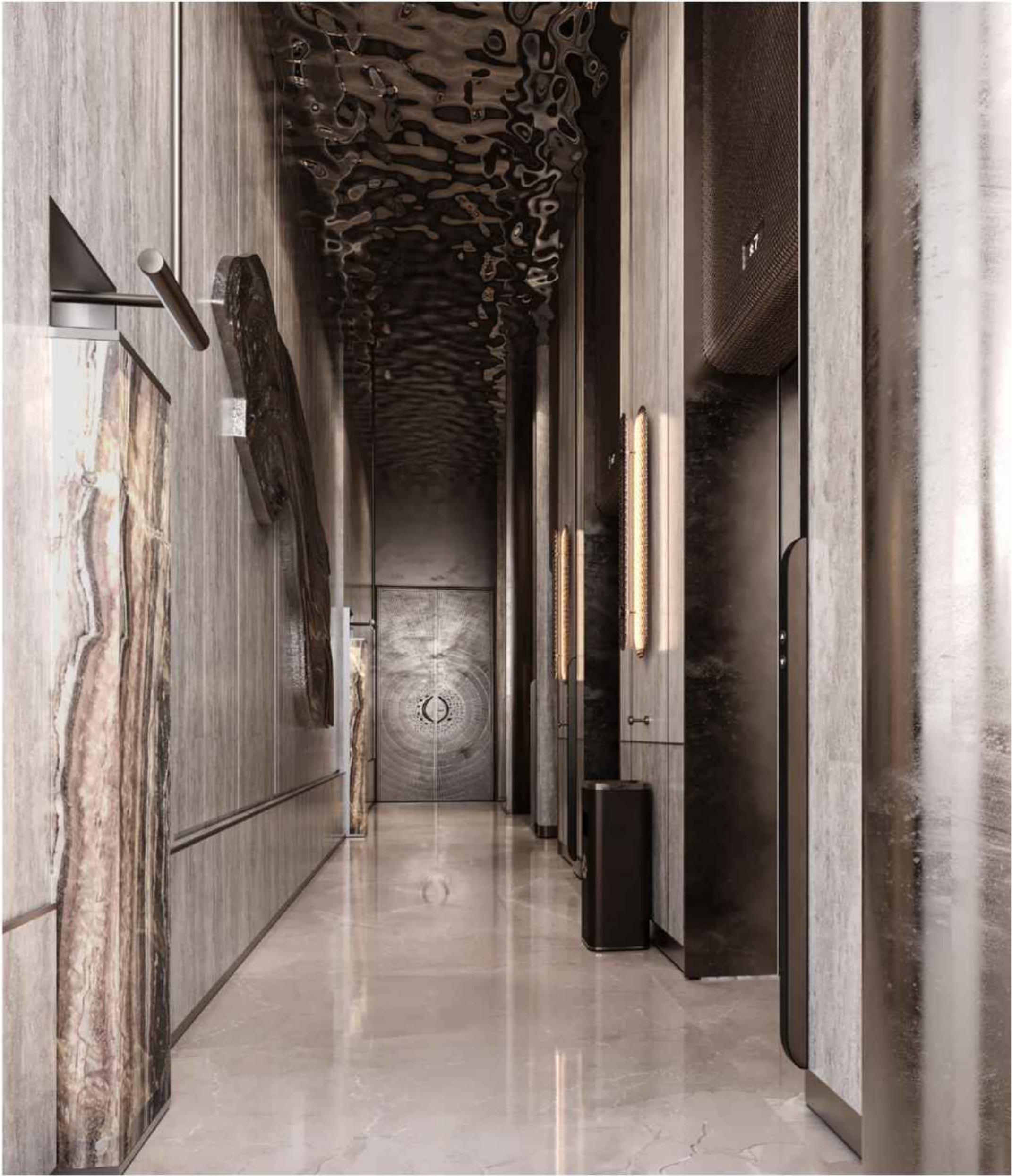
Three-Bedroom
Apartments

Four-Bedroom
Duplex Penthouses

Five-Bedroom
Duplex Penthouse

 CITI
DEVELOPERS

ARYA
RESIDENCES



	QUANTITY	PARKING
1 Bedroom Apartments	49	1
2 Bedroom Apartments	7	1
3 Bedroom Apartments	7	2
4 Bedroom Duplex Penthouses	4	3
5 Bedroom Duplex Penthouse	1	5
TOTAL APARTMENTS	68	



STARTING FROM – **AED 1.9M**

PAYMENT PLAN – **60-40**

HANDOVER – **Q4 2027**

BOOKING

10%

AFTER 30 DAYS

14%

MONTHLY

1%

30 MONTHS

6TH & 12TH MONTH

5%

HANDOVER

40%

Contact

Toll-Free : 80044440
www.citideveloper.com

Socials

 @citidevelopers
 Citi Developers
 @CitiDeveloper

Experience Center

Villa No 1 & 2,
625 Jumeirah Road,
Umm Sugeim First, Dubai, UAE