



WYNWOOD

BY IMTIAZ

DUBAI ISLANDS

IMTIAZ



WELCOME TO WYNWOOD

Welcome to Wynwood Residence by Imtiaz, an architectural sanctuary rising on the prestigious shores of the Dubai Islands. Poised along the coastline, Wynwood is a sculpted reflection of serenity and sophistication, designed for those who seek stillness without compromise. This rare residential offering blends timeless design with curated amenities, offering a lifestyle where every detail is shaped by purpose and precision. Set just minutes from Dubai's most iconic landmarks, including Downtown Dubai, DIFC, and Dubai International Airport, Wynwood enjoys seamless connectivity while feeling a world apart.

Dubai Islands, one of the city's most visionary masterplans, offers a refined coastal setting with expansive waterfronts, crystal-clear waters, and unmatched tranquillity, yet remains close to Michelin-starred dining, vibrant retail, and cultural destinations. Wynwood Residence stands apart through its poetic integration of form and function. Every residence is fully furnished and composed with intention, featuring high ceilings, panoramic glazing, and bespoke interiors that blend natural textures with contemporary warmth. From 1 to 4-bedroom homes and exclusive duplexes, each unit is crafted to reflect a life of calm, clarity, and quiet luxury.

Beyond its sculpted architecture, Wynwood is elevated by its podium lifestyle, a multi-tiered realm of experiences that includes a horizon-edge infinity pool, sunken lounge, outdoor yoga terrace, curated clubhouse, and the iconic Whisper Steps amphitheatre staircase. Landscaped walkways, green courtyards, and children's play zones enrich the community while dining pods and extended terraces create space to pause, gather, and breathe. The exclusive penthouses offer an even rarer experience, each featuring a private rooftop retreat with an infinity pool, open-air bar, garden terraces, and panoramic views of the Arabian Gulf. Every rooftop is designed as a gallery of light, leisure, and layered elegance. Living at Wynwood is not simply about ownership but embracing a signature lifestyle of balance, beauty, and presence. This is not a place for everyone. It is a place for those who understand that true refinement is never loud, always deliberate.

Masih Imtiaz
CEO, Imtiaz Developments

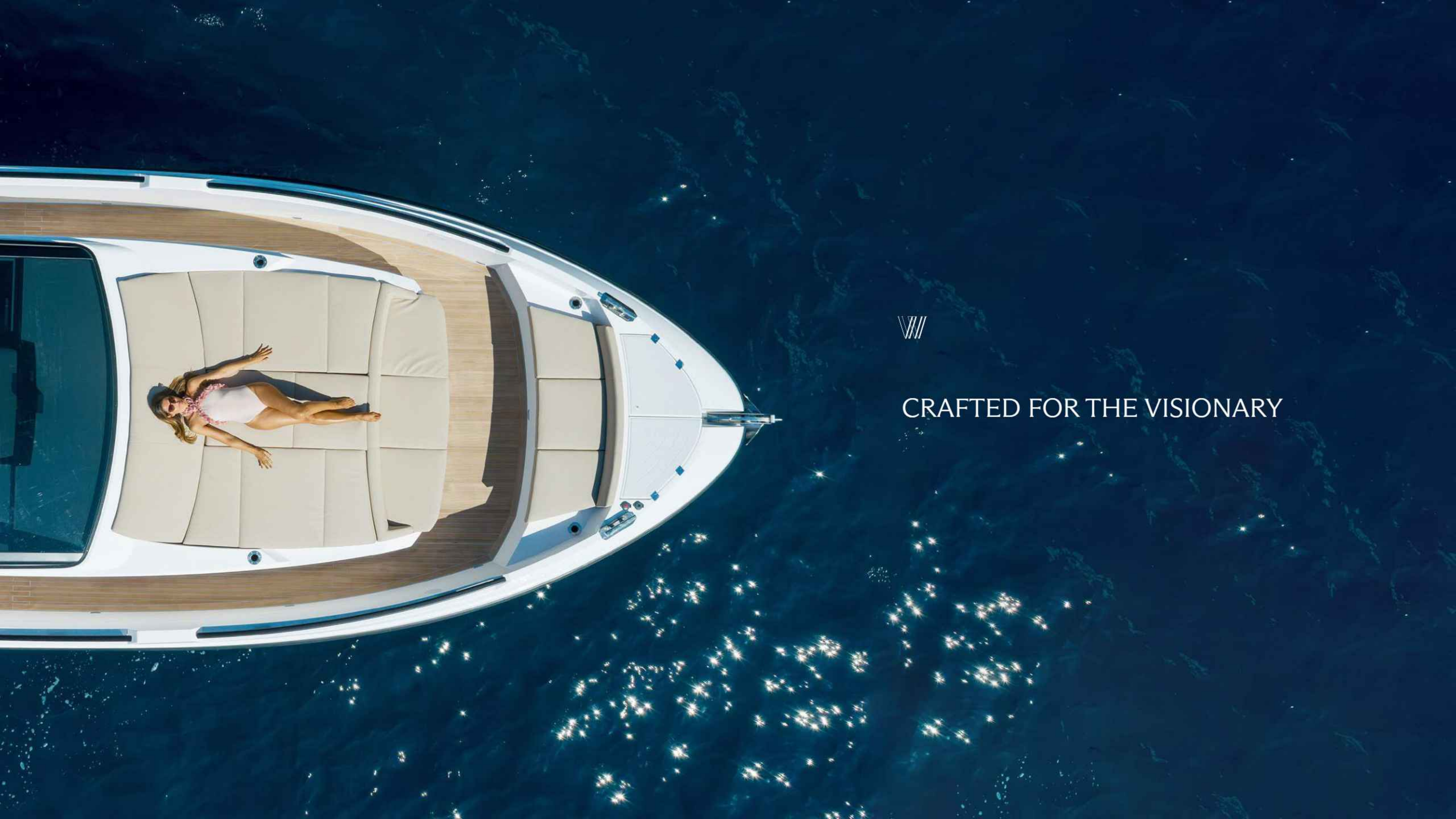
WYNWOOD



FOR THE FORTUNATE FEW

There are places made for everyone. And then there is Wynwood. Composed with care, intended for those who move through the world differently, elegantly and extraordinarily.





CRAFTED FOR THE VISIONARY



PRECISION IN EVERY BOUNDLESS POSSIBILITY

Each apartment in Wynwood Residence defines and challenges ultra-luxury. Like sculpted forms carved from coastal stillness, they belong to a rare collection of homes created for those who dwell beyond convention.



WYNWOOD RESIDENCE
INITIAL



The skyline stands in the distance—bold, brilliant, and alive. From Wynwood, you see it all, yet feel none of its weight. Life on Dubai Islands unfolds at a gentler pace. Softer. Slower. Every line of architecture designed to frame your world—not rush it.

WYNWOOD — IMTIAZ





THE POISED FINALE TO EVERY JOURNEY YOU BEGIN

A space where presence, power, and architecture align in quiet harmony. In a world shaped by detail and distinction, Wynwood is the address that reflects who you are, long before you step through its doors. Here, style isn't worn. It's lived.



WYNWOOD BY INTIAZ





THE RAREST THINGS WHISPER

Some things whisper, and in that silence, they endure. Wynwood is crafted not to stand out but to stand the test of time, with thoughtful architecture, restrained elegance, and homes that speak to those who listen differently.



IN THE EMBRACE OF THE ISLAND

Dubai Islands represents an innovative development in line with the Dubai 2040 Urban Master Plan, focusing on crafting sustainable communities that bolster connectivity, tourism, and quality of life. This initiative also seeks to drive economic development and uphold environmental protection.


WYNWOOD
BY IMTIAZ



A LOCATION THAT IS A STATEMENT

Wynwood Residence rises along the tranquil coastline of Dubai Islands. As one of Dubai's most evocative new coastlines, Dubai Islands carries the quiet promise of beginnings. Once desolate, now awake, its shores reflect the city's boldest aspirations, where the sea has waited patiently for architecture worthy of its view.





JUST 15 MINUTES AWAY

Wynwood Residence is just minutes from it all—yet worlds away in spirit. Only 5 minutes from Dubai Islands Marina, 10 minutes from Deira Waterfront, and 15 minutes from Dubai International Airport, The Dubai Frame, and Downtown Dubai. Enjoy seamless access to Dubai Mall, The Dubai Fountain, Ski Dubai, and DIFC Art Galleries—all within 20 minutes. Every destination is within reach, while your home remains anchored in island stillness.

**DOWNTOWN
DUBAI**

DIFC 

DUBAI MALL

OPERA GALLERY


متحف المستقبل
MUSEUM OF THE FUTURE


**THE ARTS CLUB
DUBAI**


LPM RESTAURANT & BAR


**CIPRIANI
DOLCI**


J1 BEACH
THE SPIRIT OF THE BEACH



Wynwood Residence redefines elevated living
through sculpted architecture, bespoke finishes.





WYNWOOD

NATURE, HELD GENTLY WITHIN

In the heart of Wynwood Residence, the green courtyard offers calm in substance. It is a place where mornings stretch, memories take root, and stillness becomes part of the story.

WYNWOOD - DUBAI ISLAND







WYNWOOD | INITIAZ





A MAJESTIC WELCOME AWAITS YOUR ARRIVAL

Arrive beneath layered light and gentle stone, into an extravagant lobby composed in quiet harmony and open to the sky above. Around it, artefacts, textures, and soft greenery set a rhythm of calm, an overture to the life waiting above.





WYNWOOD

IMTIAZ



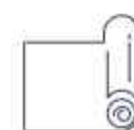


THE ARCHITECTURAL SOLACE THAT THE PODIUM EXPERIENCE REFLECTS

The podium experience at Wynwood Residence is otherworldly, a sculpted layer of calm, where life breathes fearlessly. It is a feeling designed to be relished and lingered on.



VIP
PARKING



YOGA
TERRACE



POOL
DECK



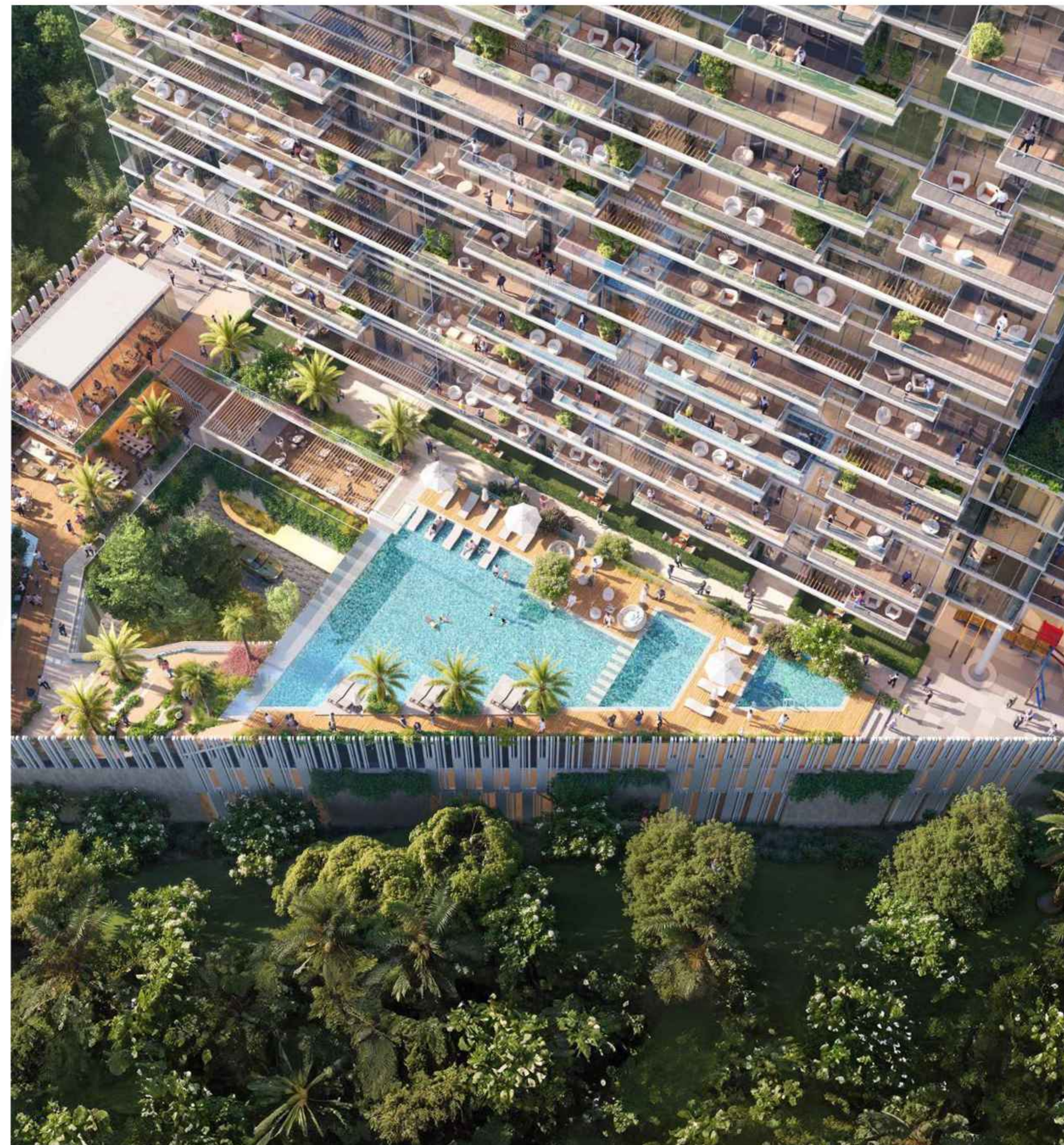
ICONIC
STAIRCASE



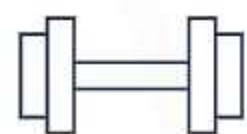
PEDESTRIAN
PATHWAY



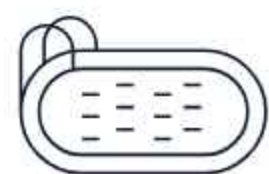
MULTIPLE
PODIUM LEVELS



AMENITIES



FULLY
EQUIPPED GYM



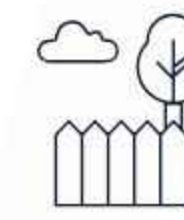
JACUZZI



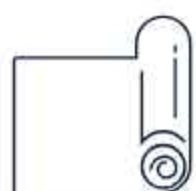
INFINITY
POOL



BBQ
AREA



GREEN
COURTYARD



YOGA
TERRACE



CLUBHOUSE



ICONIC
STAIRCASE



MULTIPLE PODIUM
LEVELS



FLOATING DINING
PODS



ELECTRIC VEHICLE
RECHARGE STATION

WYNWOOD | IMITIAZ







WYNWOOD

THE FEELING OF INFINITY

Bathe in the pure bliss of the infinity pool, where the sky melts into the sea and the ocean surrounds you in a silent embrace, a parable of calm that sculpts your life.





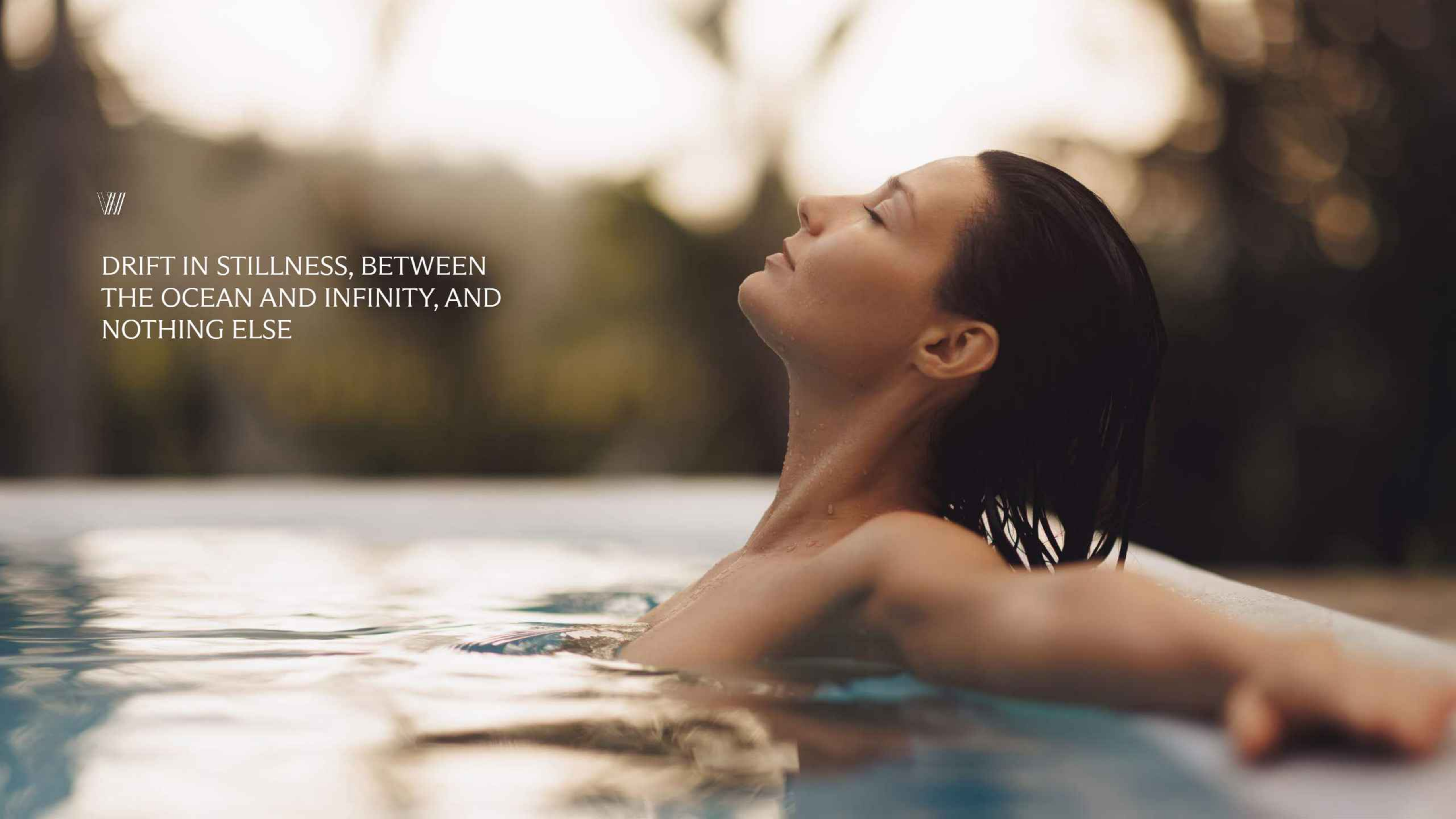
WYNWOOD
|
IMTIAZ







DRIFT IN STILLNESS, BETWEEN
THE OCEAN AND INFINITY, AND
NOTHING ELSE





WYNWOOD

AWAKENING THE BODY. QUIETING THE MIND.

A fully equipped, world-class gym rests on the podium, surrounded by calm and clarity, where strength meets serenity in every step, stretch, and breath.





WYNWOOD | LIMITED





WYNWOOD | IMITAZ





WYNWOOD INITIA Z



WYNWOOD SPORTS



WYNWOOD

THE SOCIAL HEARTBEAT

The clubhouse is Wynwood Residence's quiet heart, enclosed in lush greenery. It is a place to host, reflect, or simply be.











INTERIORS

WYNWOOD RESIDENCE

“Luxury is not added. It’s ingrained.”

- Custom-designed kitchens fitted with MIELE appliances — where precision meets everyday elegance.
- Sanitary fittings by GESSI, GEBERIT, and VILLEROY & BOCH — a statement of performance, design, and comfort.
 - ALEXA — enabled smart controls for effortless, voice-activated living that adapts to your rhythm.
- Fully furnished residences with bespoke wardrobes, refined finishes, and natural textures throughout.
- Seamless integration of ambient lighting and sculpted ceiling profiles — balancing warmth, stillness, and clarity.
 - Engineered stone countertops and minimalist cabinetry — crafted for quiet luxury.
 - Natural materials curated for tactile softness and timeless beauty.

All residences are delivered fully furnished, with thoughtfully layered palettes and premium brand selections throughout. Each element is fitted to express both form and function.

Miele

GESSI®


Villeroy & Boch
1748

■ **GEBERIT**

alexa



ELEGANCE CAPTURED BY THE WINDOW

Each residence at Wynwood is shaped with intention, where light flows freely, proportions are balanced, and every detail is considered. From 1 to 3-bedroom homes, this curated collection offers a quiet elegance that lives in the texture of materials, the rhythm of space, and the stillness surrounding it. Designed not to impress, but to endure.

























THE SIGNATURE
DUPLEXES





ENDLESS VIEWS. EFFORTLESS CALM.

The Signature Duplexes crown Wynwood Residence with a quiet confidence, where light moves without interruption and every line is drawn with purpose. Here, space is not measured in square feet, but in silence, clarity, and elevation. Private pools, open-sky terraces, and panoramic views converge in a home that doesn't just rise above, but redefines what it means to reside.













WYNWOOD | IMITAZ



Kitchen & Dining

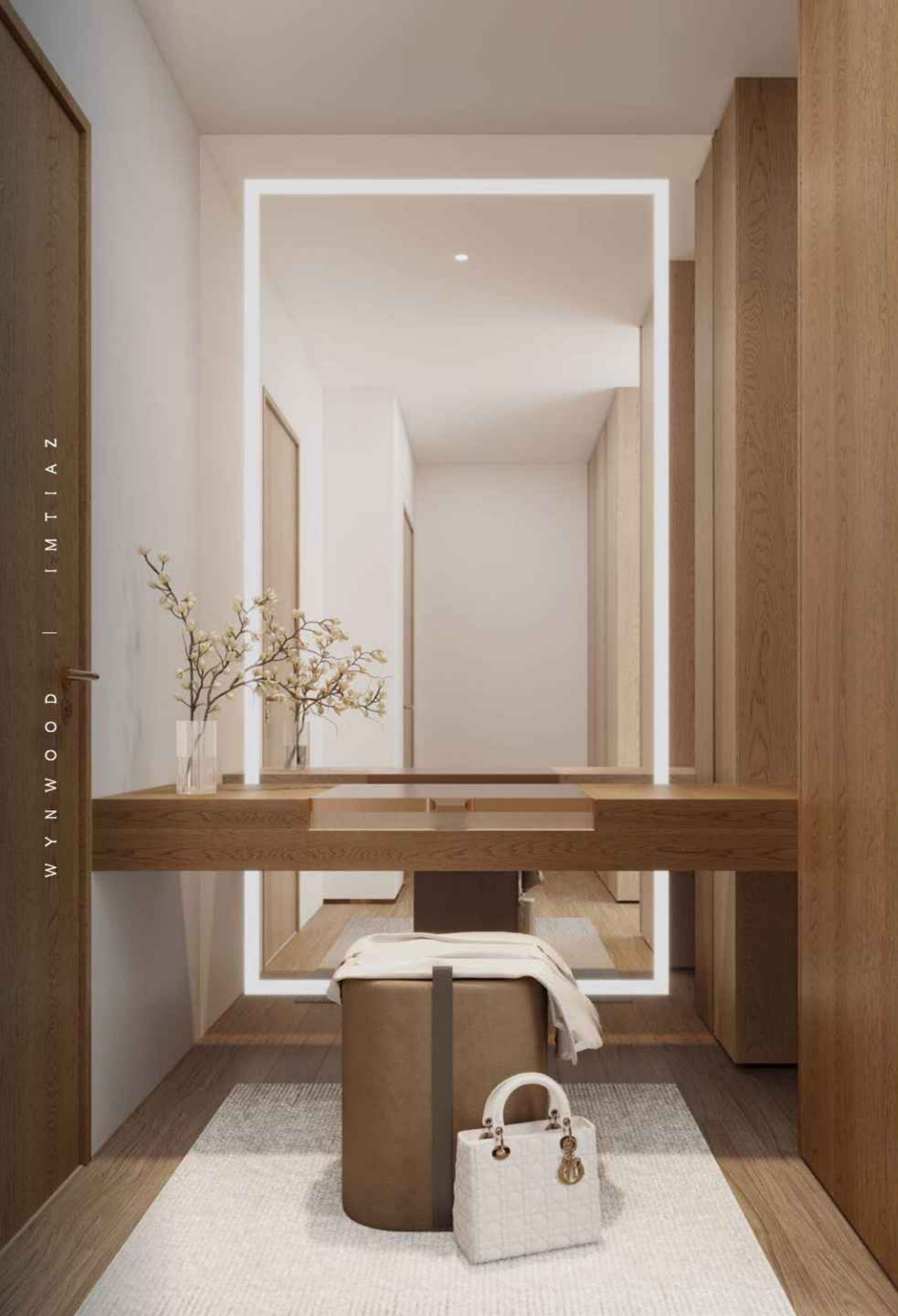


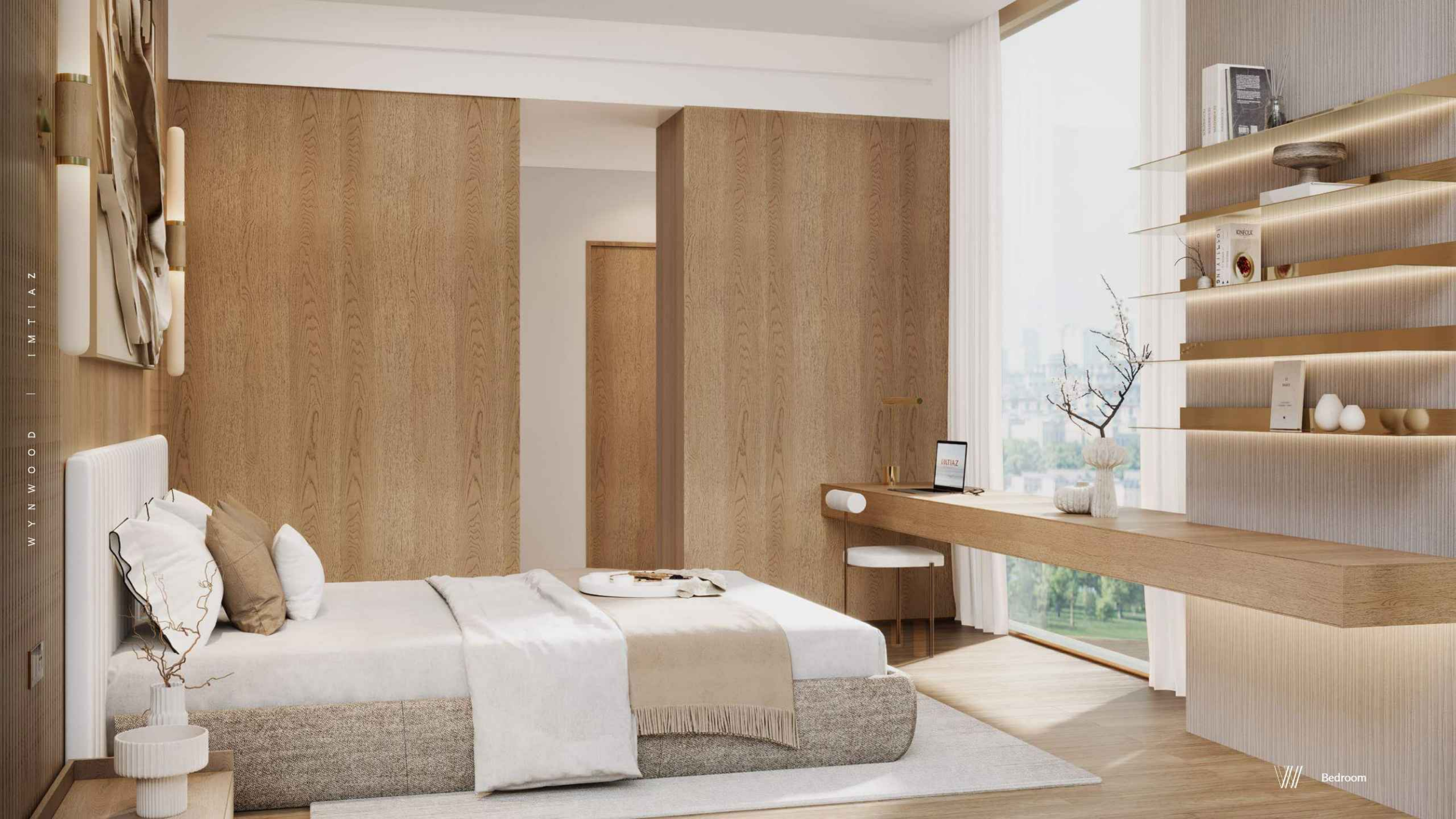


WYNWOOD IMITIAZ



Bedroom



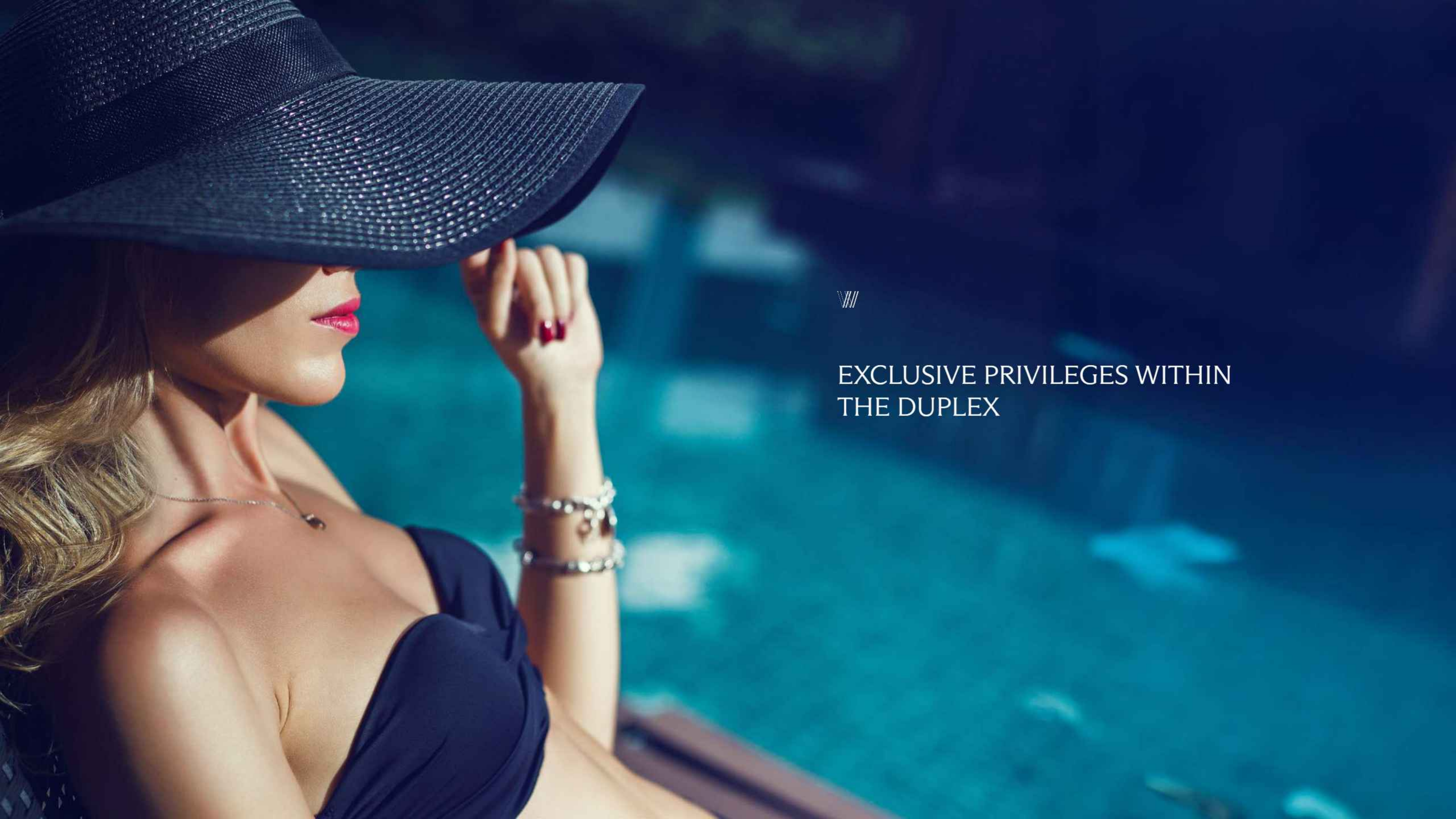








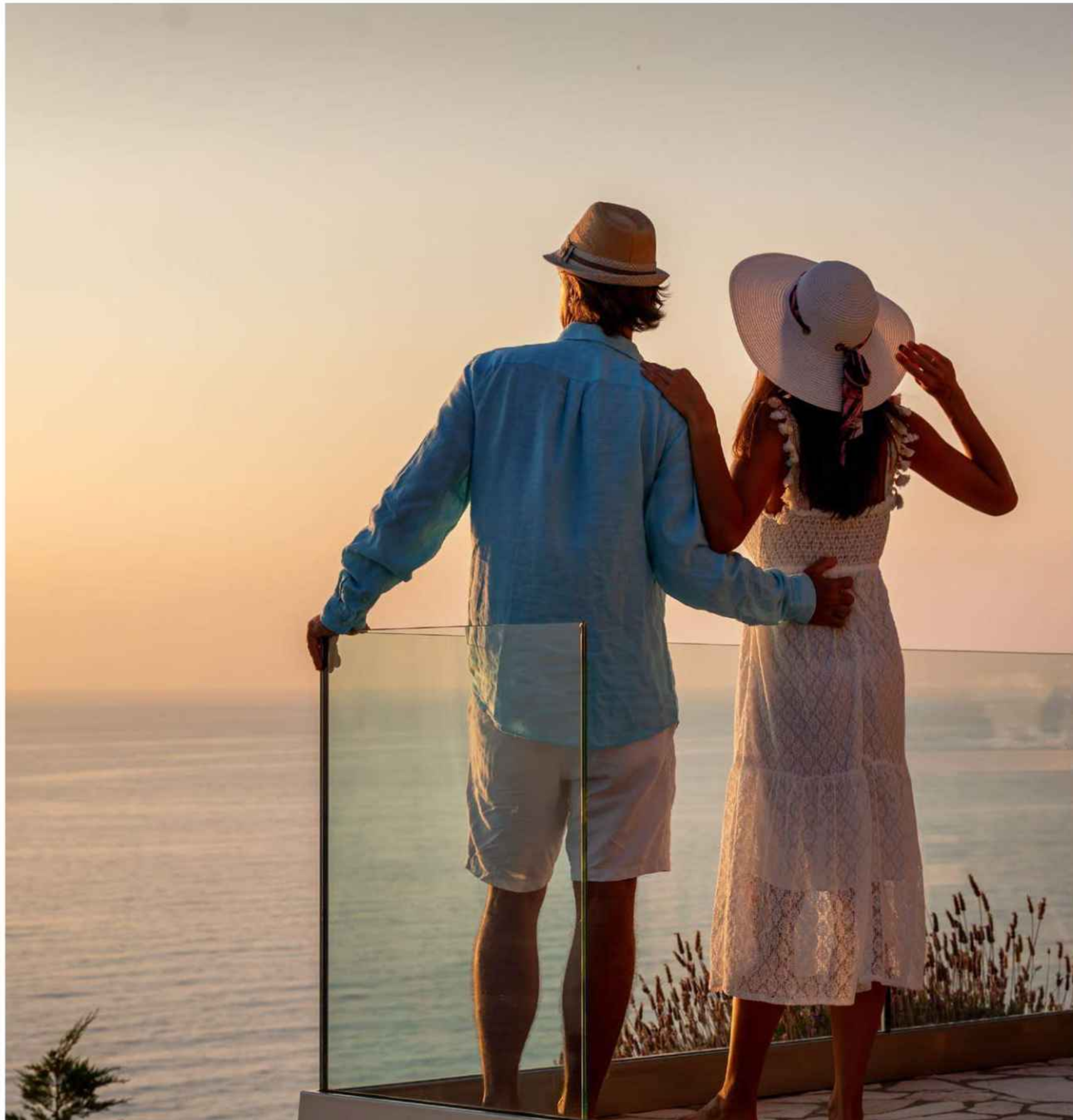




VIII

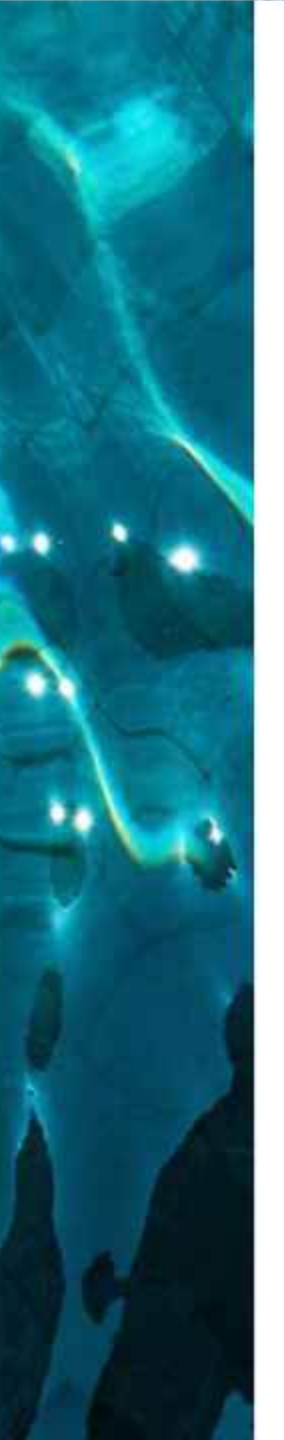
EXCLUSIVE PRIVILEGES WITHIN
THE DUPLEX





OUTDOOR SITTING AREA
**THE HORIZON
LOUNGE**

A space where the breeze lingers, and time slows.
Surrounded by views, this open-air haven invites
morning rituals and twilight reflections.





BBQ AREA

THE FLAME GARDEN

Crafted for connection, the BBQ space is where flame meets flavour, set against a skyline backdrop, designed for evenings that last longer.





PRIVATE INFINITY POOL
**THE INFINITY
MIRAGE**

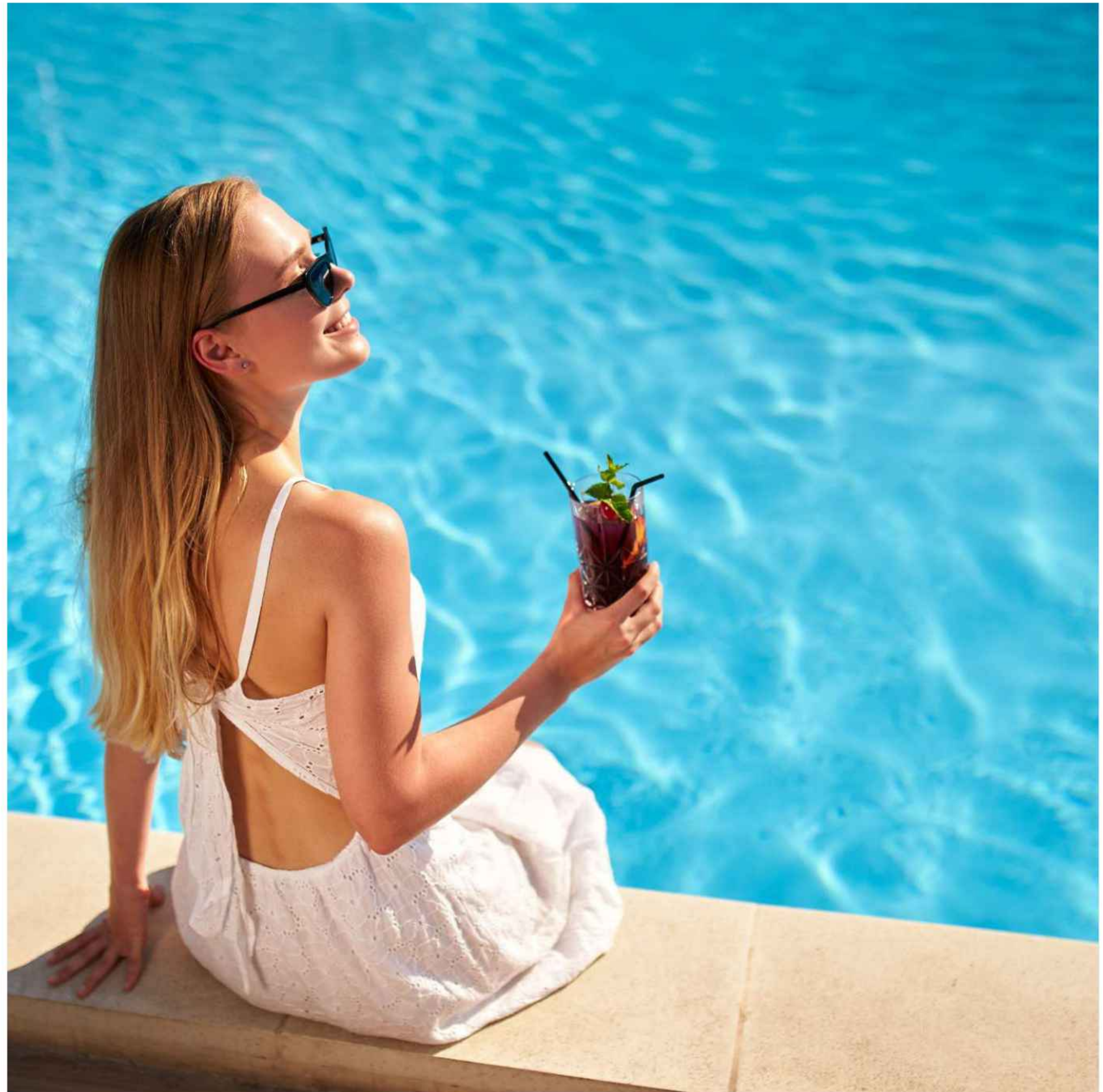
More than water, it's a mirror to the sky. Suspended in stillness, your pool becomes the quietest luxury of all.

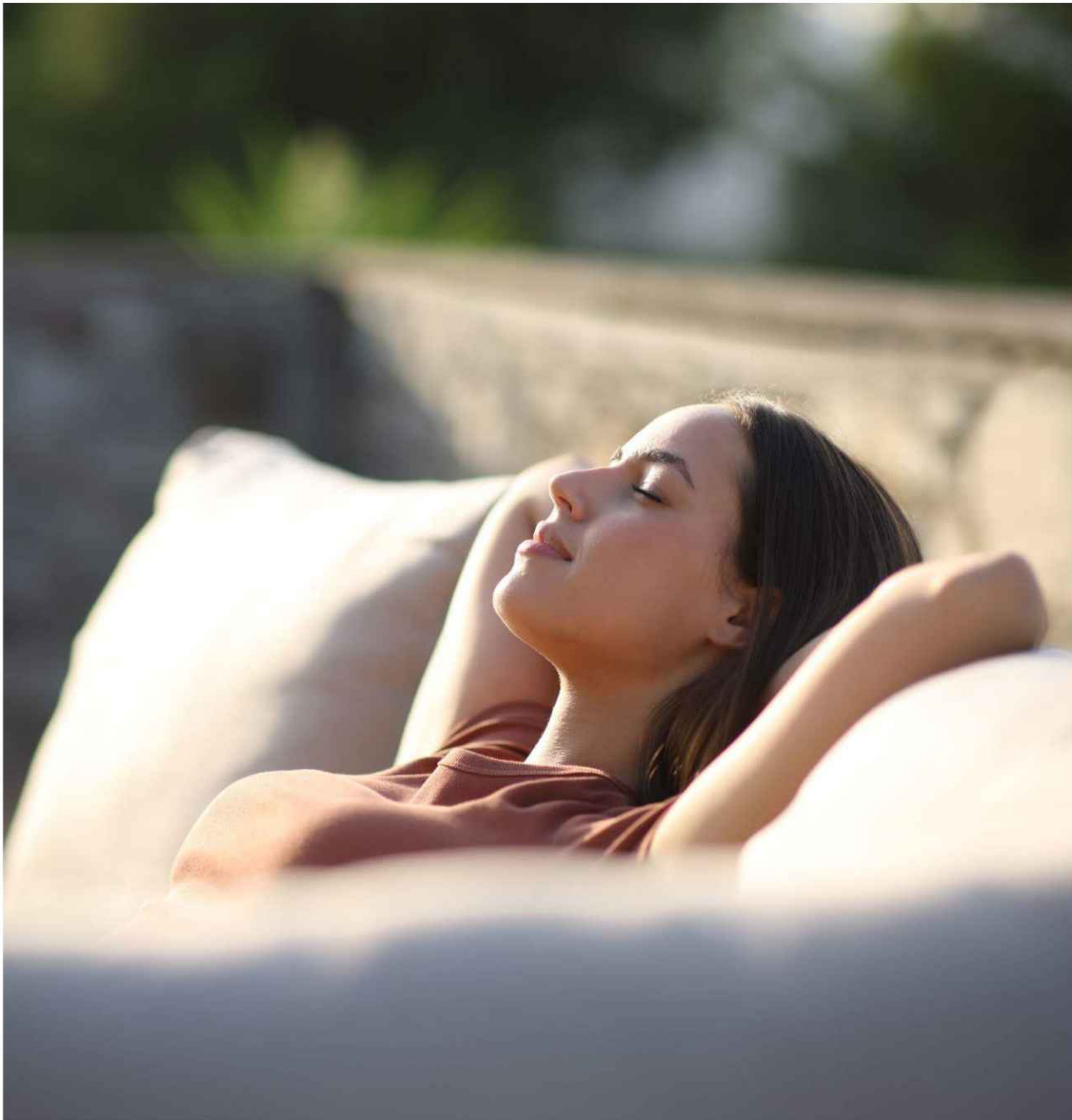




POOLSIDE BAR
THE SKY BAR

A toast to the horizon. This elevated bar blends effortless hospitality with panoramic views. It is private, poised, and always ready.





FLORA AND FAUNA
**THE GARDEN
DRIFT**

Nature, curated. Greenery softens the edges of stone
and sky, bringing the outside in without compromise.





POOLSIDE DECK

THE SOLSTICE DECK

A sun-warmed platform where conversations unfold
and the day drifts by. Perfectly placed, perfectly paced.



IMTIAZ

DEVELOPMENTS

A JOURNEY TO PERFECTION

imtiaz.ae | info@imtiaz.ae

800 IMTIAZ (468429)