





## Brochure Fonts

Header: ALTA

Body: Montserrat

Signature: *Amsterdam Four*



Westar  
#E4E0DB

Woodland  
#3E4B25

Russett  
#7C6557

Domino  
#988165

## Logo Fonts

Logo: SIMPLE SERenity SHERIF

2nd Line: Montserrat

by: *Baekrajan*

Main: **Quadrar Bold**







# FLOW

RESIDENCES

## DISCOVER THE HIDDEN PARADISE

Step into a world where luxury meets serenity — Main Realty proudly unveils an exclusive sanctuary on Dubai Island, where every day feels like a private escape on a luxury cruise. Inspired by the sun-soaked vibrance of Miami and infused with the bold glamour of Dubai, this architectural masterpiece redefines waterfront living.

Here, sophistication flows through every detail — from panoramic ocean views and world-class amenities to interiors that mirror the elegance of a five-star resort. This is not just a home — it's an endless vacation, a lifestyle sculpted for those who seek peace, prestige, and unforgettable moments.

WELCOME TO THE FUSION OF MIAMI'S COASTAL CHARM  
AND DUBAI'S ICONIC BRILLIANCE. *Welcome Home.*



AN ARCHITECTURAL MARVEL BLENDING  
*Miami electric energy and Dubai's opulent glamour*





# LIVE BY THE SEA

## *Dubai Island*

Dubai Islands Designed to promote sustainability, connectivity, and vibrant community living, it enhances mobility, supports tourism, and elevates the overall quality of life while encouraging economic progress and environmental responsibility.

THIS VISIONARY DESTINATION IS MADE UP OF FIVE  
UNIQUELY THEMED ISLANDS.



ISLAND A

Mixed-use  
communities with  
malls and marinas



ISLAND B

Resort-style,  
peaceful  
neighborhoods



ISLAND C

Wellness and  
family retreats



ISLAND D

Sports and active  
living



ISLAND E

Luxury beachfront  
villas





# Dubai Island

## LEGEND

Beach Front, Hotel/Resort Marina, Marina Hotels & Apartments, Mall, Urban Island Residential, Waterfront Residential Beach, Promenade, Community Park, Destination, Art & Cultural District

## ISLAND A

### DISTRICT PLAN

#### BEACHFRONT HOTEL AND RESIDENTIAL DISTRICT

Mix of luxury hotels and branded residential apartments

#### THE MALL

Mixed-use core for retail and entertainment

#### MARINA HOTEL AND RESIDENTIAL DISTRICTS

Mix of hotel and luxury residential apartments along the marina waterfront

#### URBAN ISLAND RESIDENTIAL COMMUNITY DISTRICT

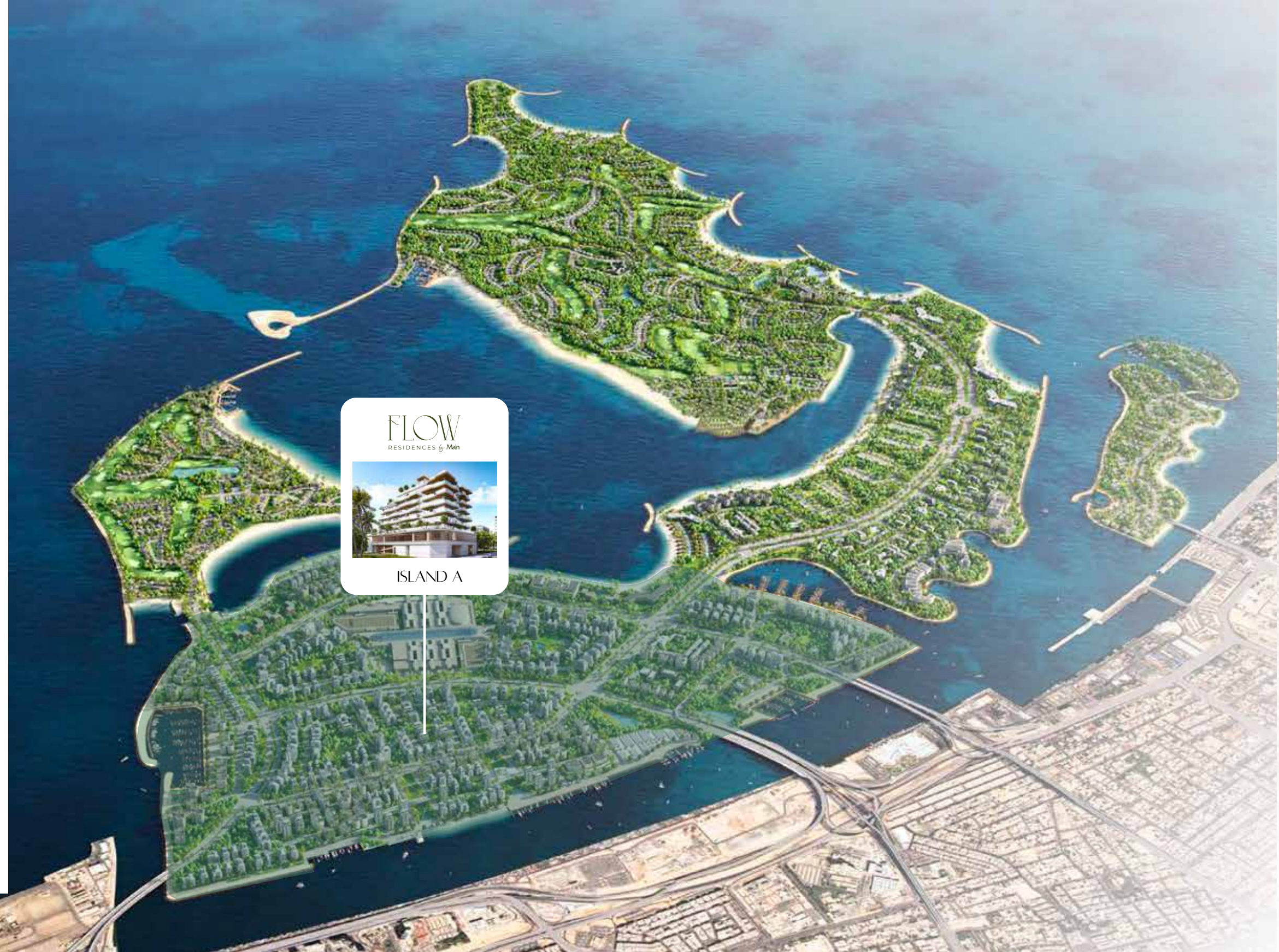
High density garden apartments

#### WATERFRONT RESIDENTIAL COMMUNITY DISTRICT

Mix of medium and high density residential apartments

#### DESTINATION ART AND CULTURAL DISTRICT

Speciality Retails and Cultural Activities



## LOCATION OVERVIEW



12 MINS.  
Dubai International Airport



15 MINS.  
Business Bay



17 MINS.  
Downtown - Dubai Mall



20 MINS.  
Mall of the Emirates



25 MINS.  
Palm Jumeirah



30 MINS.  
Al Maktoum Airport





# Waterfront Retreat

WHERE MIAMI'S VIBRANT ENERGY MEETS  
DUBAI'S ICONIC LUXURY





*Amir Siddiq*  
CEO/ FOUNDER



Main Realty has established itself as a premier real estate developer in Miami, specializing in high-end property development across sought-after locations such as Miramar, Windmill Ranch Road, Weston, Pembroke (Florida), and more. Our expertise in delivering exceptional residential apartments has made us a trusted name in the U.S. real estate market.

Now, Main Realty has expanded to Dubai, bringing its signature craftsmanship, innovation, and superior quality to one of the world's most dynamic real estate markets. Our goal is to compete with top-tier developers while introducing a distinctive blend of American design excellence and Dubai's luxury lifestyle. At Main Realty, we believe that a home is more than just a structure—it is a lifestyle, an experience, and a reflection of individuality. Our projects are meticulously designed with modern elegance, premium finishes, and world-class infrastructure, ensuring that every residence is a true masterpiece.

What sets us apart is our commitment to excellence—from selecting prime locations for both living and investment to crafting spaces that feel like home from the moment you step in. We create not just houses, but exceptional living environments where families can thrive and investors can achieve long-term value.

MIAMI VIBES MEETS DUBAI BLING





*Exterior*

## *Featured*

A limited collection of 1, 2, and 3-bedroom apartments, including premium 3-bedroom duplexes featuring private gardens and personal plunge pools — designed for those who seek sophistication and comfort.



Experience refined living with spacious layouts ranging from 97 sq.m. to 213 sq.m. thoughtfully designed to offer both comfort and elegance. These partially furnished residences provide the convenience of immediate move-in, while 16 world-class amenities cater to every aspect of modern lifestyle. Selected units feature private plunge pools and lush gardens, offering a unique blend of luxury and privacy. Residents also benefit from ample parking, with 57 dedicated spaces.





# EMBRACE THE NATURE

Cruise Through Life Surrounded by Beauty.

PREMIUM LIFESTYLE

*Inspired by the Sea*

Experience shaped by the serenity of the sea and the elegance of elevated design. Every detail is crafted for those who seek refined living, surrounded by panoramic views, calming breezes, and the timeless rhythm of the ocean.







# Building CONFIGURATION

## GROUND FLOOR

Lobby, Recieving Area, Elevators, Guard Room, Telephone Room, Mep, CCTV Room and Garbage Room

## 1ST FLOOR AMENITIES

BBQ Area, Kid's Playground, Splash Pool, Kid's Pool, Outdoor Gym, Outdoor Meeting and Private Garden

## APARTMENTS

G - Podium | 3 Bedroom Townhouses  
1F | 1, 2, 3 Bedrooms Apartment  
1F - 6F | 1 to 2 Bedrooms Apartment

## ROOFTOP AMENITIES

Sunbathing Area, Water Lounges, Cabana, Infinity Pool, Pool Bar, Dj Booth, Bar's/ Seating Zone, Shift for Pod, Outdoor Meeting Yoga Area, Garden and Sandy Outdoor Seating





LIVE BY CRUISE SHIP  
*Exclusive Collection*



A woman with blonde hair and sunglasses is relaxing in a brown rope hammock. The hammock is strung between a large palm tree trunk and another point off-camera. The background features a clear blue sky, a calm turquoise sea, and a large white cruise ship on the right. In the distance, there are small islands. The overall scene is a tropical paradise.

YOUR SLICE OF PARADISE  
*Just a Step Away.*





## *Reception & Lobby*

A stylish Reception & Lobby that blends coastal cool with glamorous elegance, offering a bold first impression of luxury and lifestyle.







An aerial photograph of a tropical coastline. The water is a vibrant turquoise color, with a large, circular, white sandy patch visible in the lower center. The water's surface is textured with ripples and small waves. The coastline curves along the right side of the frame, showing a mix of green vegetation and sandy areas.

# *Cruise Away*

FROM SOUTH BEACH TO THE GULF COURSE  
WELCOME TO FLOW RESIDENCES, WHERE  
MIAMI SOUL MEETS DUBAI SHINE.

Experience a life of effortless elegance and natural rhythm, where every moment moves with grace and purpose—just like the ocean. Unfold with calm, clarity, and a sense of boundless freedom.





# INTERIOR *Design*

A seamless fusion of Miami's relaxed, modern elegance with Dubai's bold, luxurious flair. Every detail is curated to reflect a lifestyle of effortless sophistication and standout style.





# Living Room

Meticulously crafted finishes create a serene atmosphere that mirrors the comfort and luxury of a 5-star cruise retreat.



TOGETHER WE BUILD THE *Future*







# *Kitchen*

A culinary space that inspires—thoughtfully designed with elegant surfaces, premium appliances, and timeless style.





WAKE UP WITH THE *rhythm* OF THE sea  
WHERE EVERY MORNING MOVES WITH THE OCEAN





## *Bedroom*

Wake up in luxury every day—this bedroom, with its soft textures and refined details, is your private escape to serenity.





## *Bathroom*

Nature-inspired design meets modern elegance in this bathroom, where earthy tones and luxurious finishes create a soothing, spa-like atmosphere.





3 BEDROOM *Townhouse*





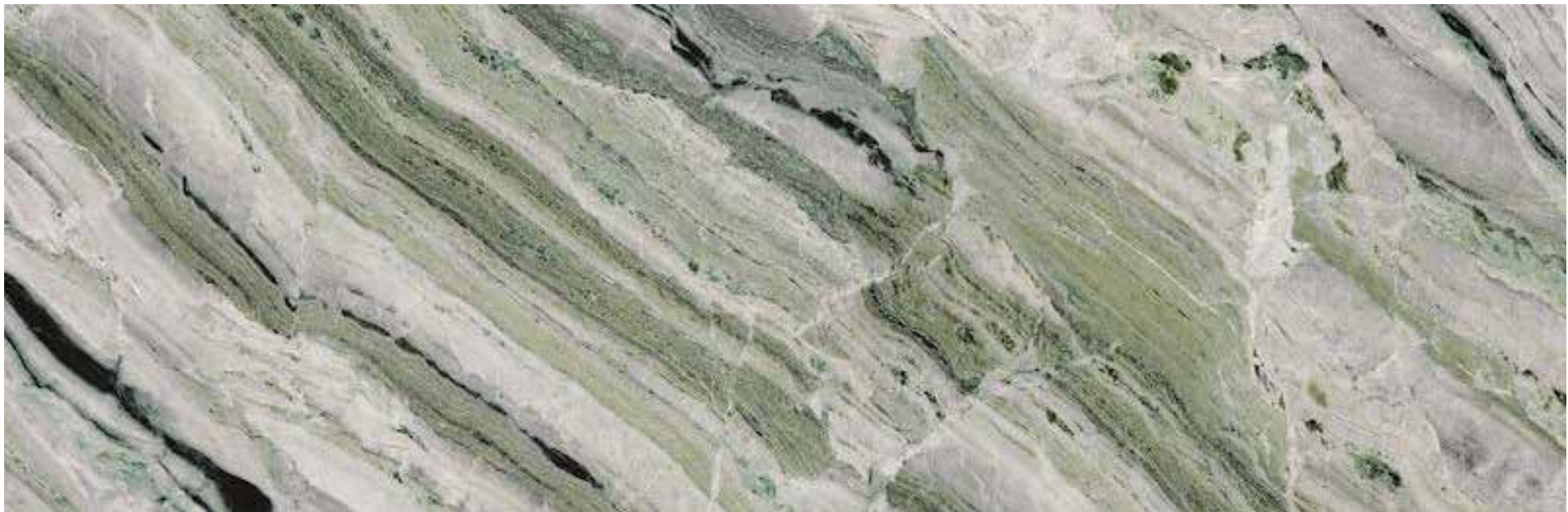






3 BEDROOMS *Signature* TOWNHOUSE





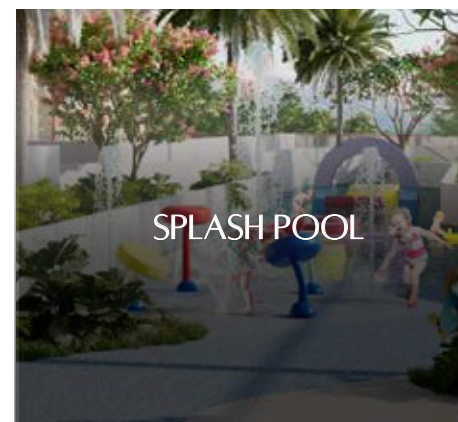


# 16 WORLD-CLASS AMENITIES

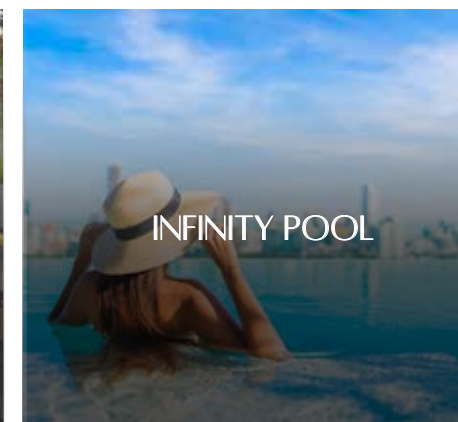
**Experience a lifestyle defined by excellence** where world-class amenities surround you with comfort, convenience, and luxury at every turn. From serene leisure spaces to state-of-the-art facilities, every detail is designed to elevate your everyday.



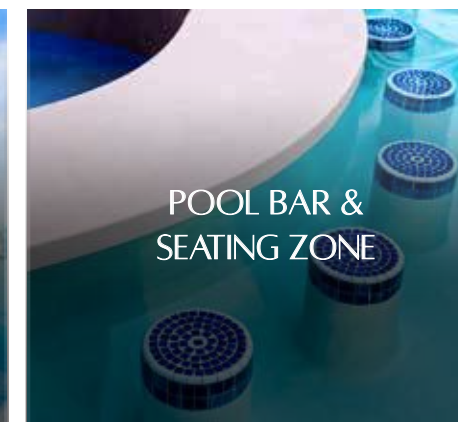
TODDLER  
POOL



SPLASH POOL



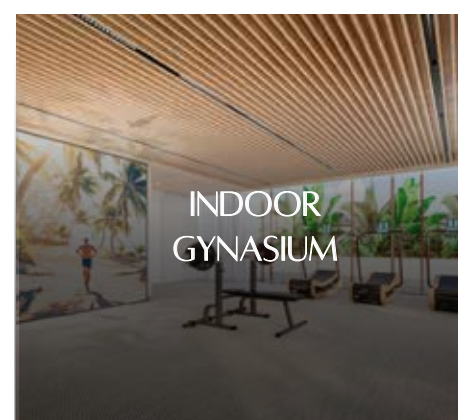
INFINITY POOL



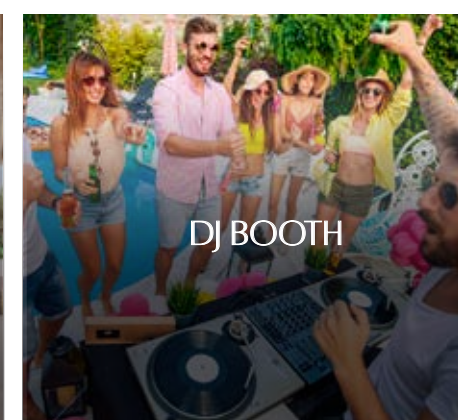
POOL BAR &  
SEATING ZONE



OUTDOOR  
PLAYGROUND



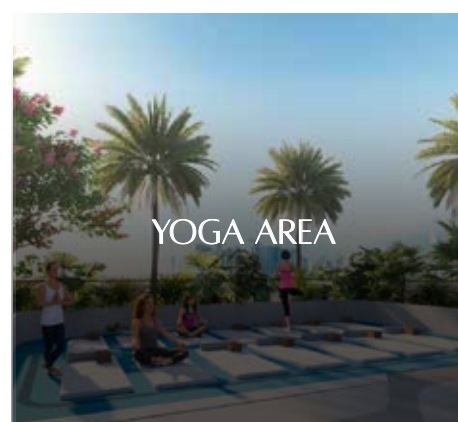
INDOOR  
GYNASIUM



DJ BOOTH



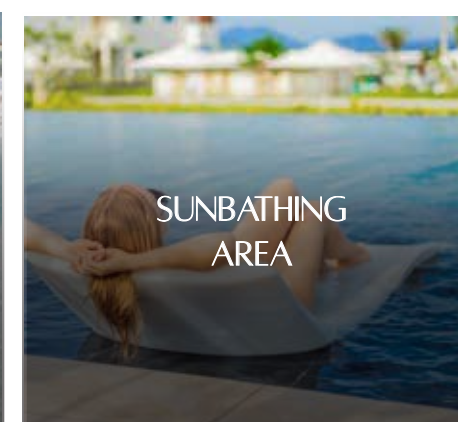
OUTDOOR  
MEETING AREA



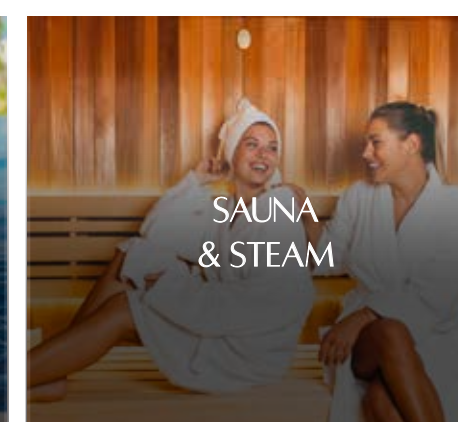
YOGA AREA



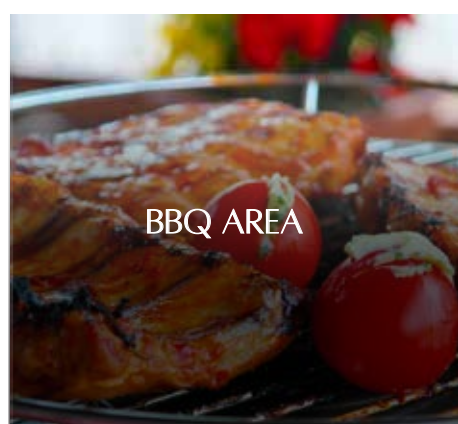
CABANAS



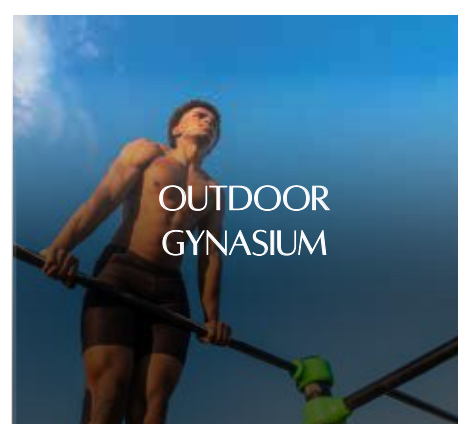
SUNBATHING  
AREA



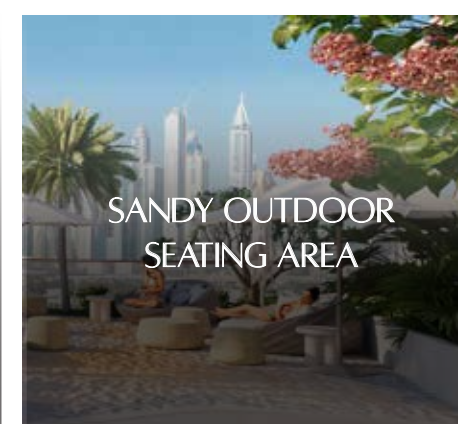
SAUNA  
& STEAM



BBQ AREA



OUTDOOR  
GYNASIUM



SANDY OUTDOOR  
SEATING AREA



GARDEN





*Amenities* OVERVIEW





YOUR *Peaceful* ESCAPE  
BEGINS AT THE EDGE  
OF *Infinity*.



# FEEL THE HEAT OF MIAMI, RIGHT HERE IN DUBAI.

We bring the heat, rhythm, and soul of Miami to the heart of Dubai—where every corner pulses with vibrant energy, coastal luxury, and a lifestyle that never sleeps. Get ready to live bold, live bright, and feel the Miami vibe in every moment.









DAY CLUB



NIGHT CLUB



SAND DECK







FITNESS THAT MATCHES  
YOUR *Lifestyle.*







*Ideal Space*  
for your children to grow,  
explore, and enhance their skills.





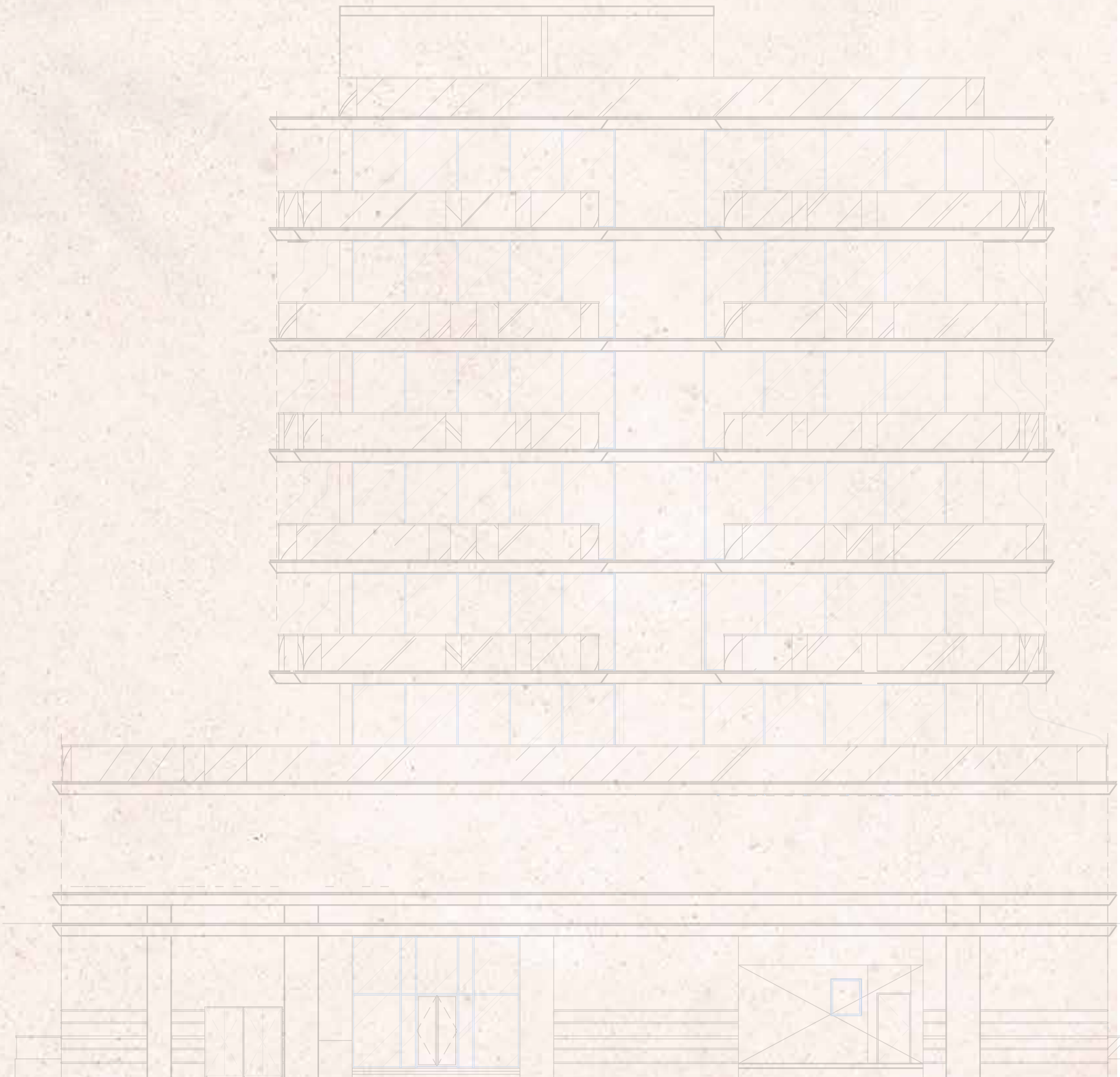




# FLOOR PLANS

---

Flow Residences showcases an elegant array of carefully designed floor plans, including one-, two-, and three-bedroom apartments alongside stylish townhouses—each thoughtfully tailored to accommodate diverse lifestyle needs. For those desiring a heightened living experience, the premium three-bedroom deluxe offers generous space, refined comfort, and a touch of understated luxury. Every residence is designed to welcome natural light, promote seamless functionality, and reflect the calming spirit of coastal living.







1 BEDROOM TYPE 1

	sq.m.	sq.ft.
Apartment Size:	65	695- 756
Balcony Size:	14	148-287
Total Size:	78-79	844-1042

TYPICAL FLOOR PLAN



Apartment No.  
209, 309, 409, 509 & 605



Apartment No.  
208, 308, 408, 508 & 604



Apartment No.  
106







1 BEDROOM

TYPE 2

	sq.m.	sq.ft.
Apartment Size:	71	760
Balcony Size:	13-14	136-153
Total Size:	83-85	896-913

TYPICAL FLOOR PLAN



Apartment No.

207 & 407



Apartment No.

307 & 507







1 BEDROOM TYPE 3

	sq.m.	sq.ft.
Apartment Size:	75	803
Balcony Size:	26-29	277-314
Total Size:	100-104	1081-1118

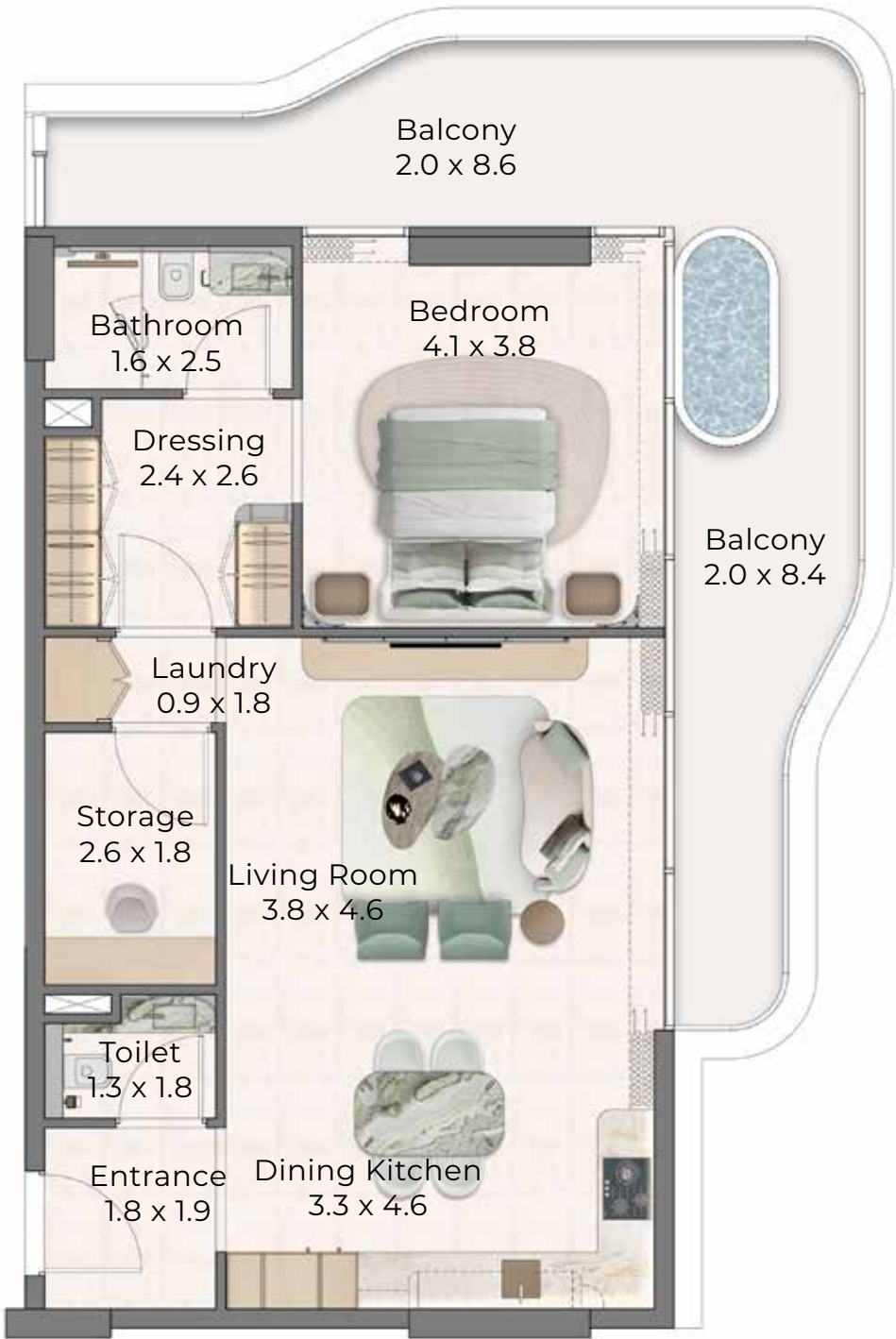
TYPICAL FLOOR PLAN



Apartment No.  
206 & 406



Apartment No.  
306 & 506







1 BEDROOM TYPE 4

	sq.m.	sq.ft.
Apartment Size:	76	821
Balcony Size:	14-34	146-363
Total Size:	90-110	967-1184

TYPICAL FLOOR PLAN

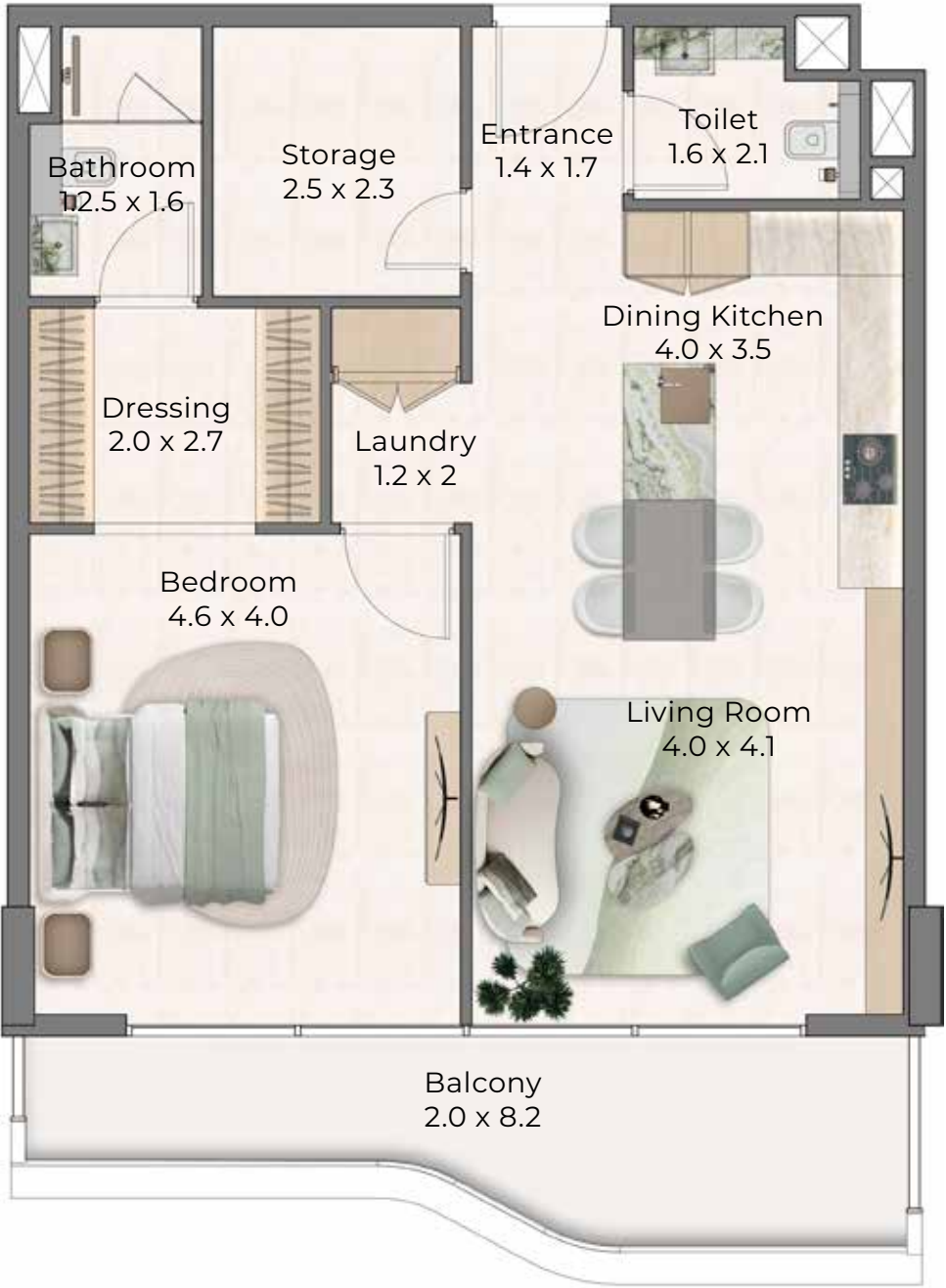


Apartment No.  
204 & 404

Apartment No.  
304 & 504



Apartment No.  
104







## 1 BEDROOM

## TYPE 5

	sq.m.	sq.ft.
Apartment Size:	72	774
Balcony Size:	17	178
Total Size:	88	952

## TYPICAL FLOOR PLAN



Apartment No.  
603







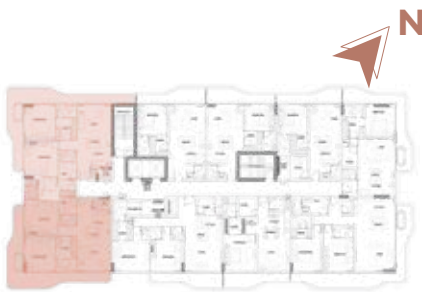
2 BEDROOM TYPE 1

	sq.m.	sq.ft.
Apartment Size:	104	1117-1122
Balcony Size:	33-107	351-1156
Total Size:	136-211	1467-2273

TYPICAL FLOOR PLAN



Apartment No.  
101, 102, 201, 202, 401, 402, 601 & 602



Apartment No.  
301, 302, 501 & 502







## 2 BEDROOM

## TYPE 2

	sq.m.	sq.ft.
Apartment Size:	110	1185
Balcony Size:	15-57	158-610
Total Size:	125-167	1343-1795

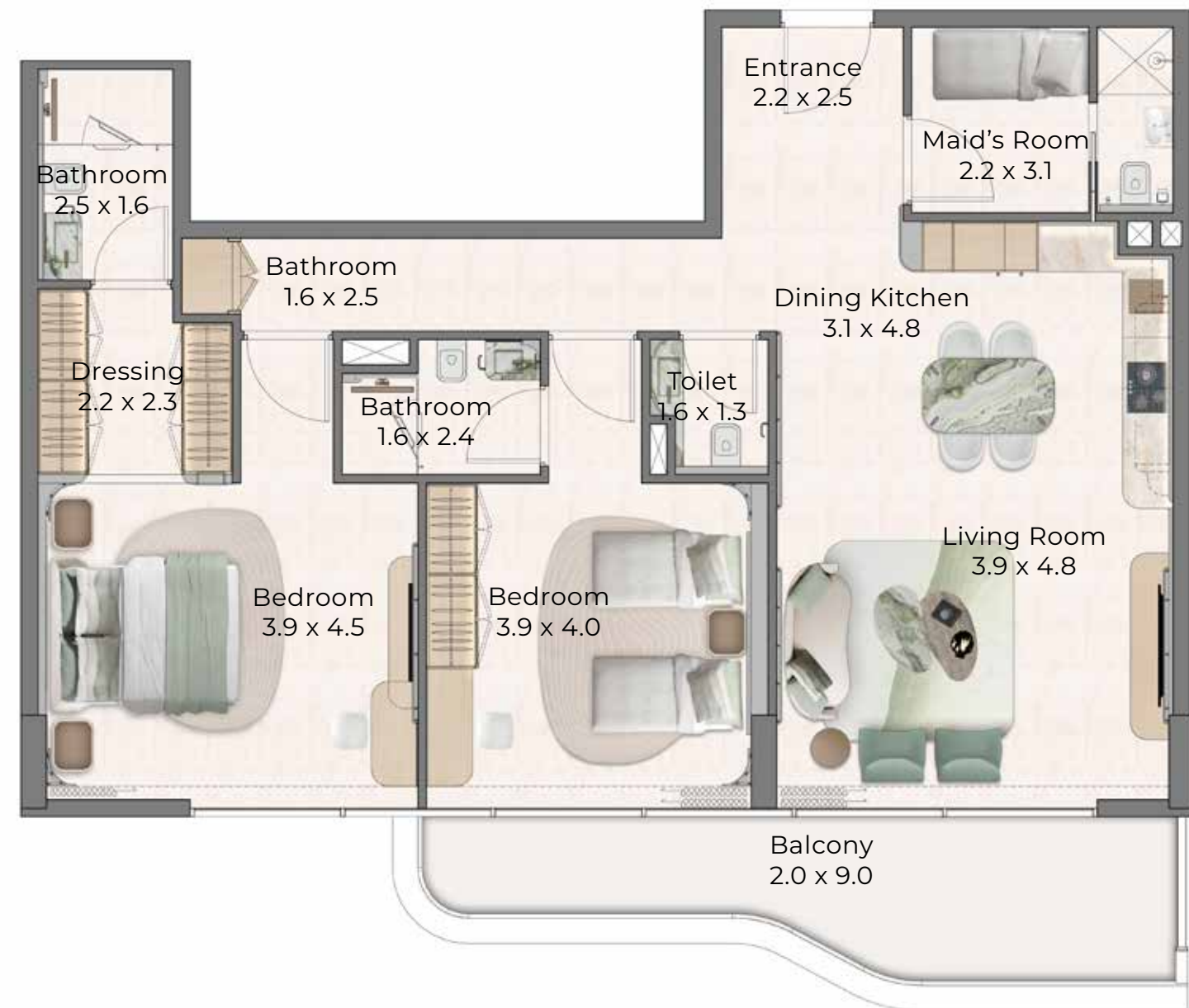
## TYPICAL FLOOR PLAN



Apartment No.  
103, 203 & 403



Apartment No.  
303 & 503







## 2 BEDROOM TYPE 3

	sq.m.	sq.ft.
Apartment Size:	120	1291
Balcony Size:	33-38	355-412
Total Size:	153-158	1646-1703

### TYPICAL FLOOR PLAN



Apartment No.  
205 & 405



Apartment No.  
305 & 305







3 BEDROOM

	sq.m.	sq.ft.
Apartment Size:	145	1579
Balcony Size:	118	1271
Total Size:	265	2850

TYPICAL FLOOR PLAN



Apartment  
105

