



ARKĀ

ENCLAVE

BY ATMOSPHERE LIVING

Dubai Islands

Floorplan Brochure

ARKA  
ENCLAVE  
BY ATMOSPHERE LIVING

*A slice of the Maldives  
drifts ashore...*





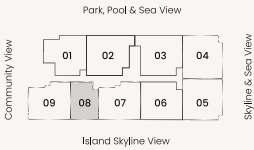


1 BEDROOM - TYPE A

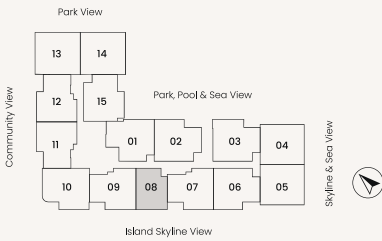
|               |      |
|---------------|------|
| Starting from | sqft |
| Suite Area    | 683  |
| Terrace Area  | 83   |
| Total Area    | 766  |



FLOOR 1



FLOOR 2 - 9



Disclaimer: Any images and visualizations contained herein are provided for illustrative and marketing purposes only. All information contained herein is subject to change without notice and without liability and only the information contained in the final Sales and Purchase Agreement entered into between the Developer and Buyer will have any legal effect. All drawings and dimensions are approximate. Drawings are not to scale and subject to change without notice. The Developer reserves the right to make revisions. The units are taken from the typical floor of a building and dimensions of the units, balcony and the size of columns may vary depending on the floor level and orientation of the unit within the building to comply with the building authority regulations. E&OE

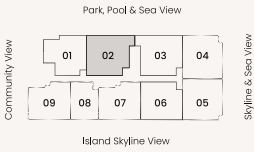


2 BEDROOM - TYPE A1

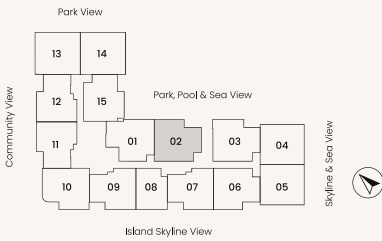
| Starting from | sqft  |
|---------------|-------|
| Suite Area    | 1,040 |
| Terrace Area  | 154   |
| Total Area    | 1,194 |



FLOOR 1



FLOOR 2 - 10



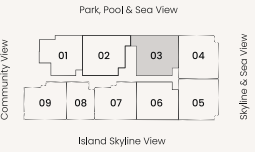
Disclaimer: Any images and visualizations contained herein are provided for illustrative and marketing purposes only. All information contained herein is subject to change without notice and without liability and only the information contained in the final Sales and Purchase Agreement entered into between the Developer and Buyer will have any legal effect. All drawings and dimensions are approximate. Drawings are not to scale and subject to change without notice. The Developer reserves the right to make revisions. The units are taken from the typical floor of a building and dimensions of the units, balcony and the size of columns may vary depending on the floor level and orientation of the unit within the building to comply with the building authority regulations. E&OE

2 BEDROOM - TYPE A1

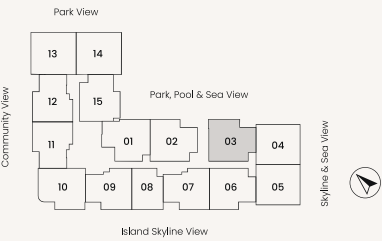
| Starting from | sqft  |
|---------------|-------|
| Suite Area    | 1,040 |
| Terrace Area  | 154   |
| Total Area    | 1,194 |



FLOOR 1



FLOOR 2 - 9

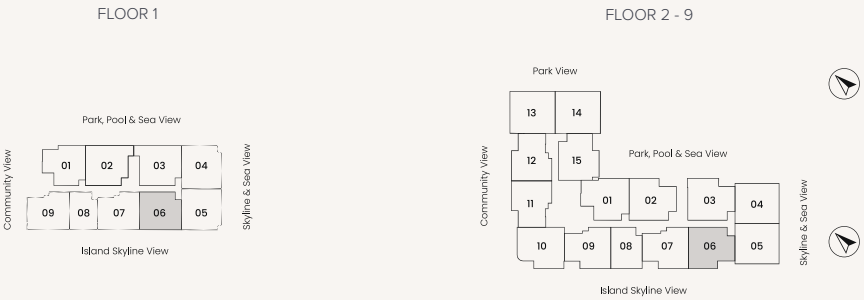


Disclaimer: Any images and visualizations contained herein are provided for illustrative and marketing purposes only. All information contained herein is subject to change without notice and without liability and only the information contained in the final Sales and Purchase Agreement entered into between the Developer and Buyer will have any legal effect. All drawings and dimensions are approximate. Drawings are not to scale and subject to change without notice. The Developer reserves the right to make revisions. The units are taken from the typical floor of a building and dimensions of the units, balcony and the size of columns may vary depending on the floor level and orientation of the unit within the building to comply with the building authority regulations. E&OE



2 BEDROOM - TYPE A2

|               |       |
|---------------|-------|
| Starting from | sqft  |
| Suite Area    | 1,040 |
| Terrace Area  | 155   |
| Total Area    | 1,195 |

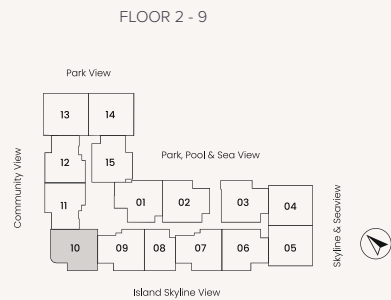
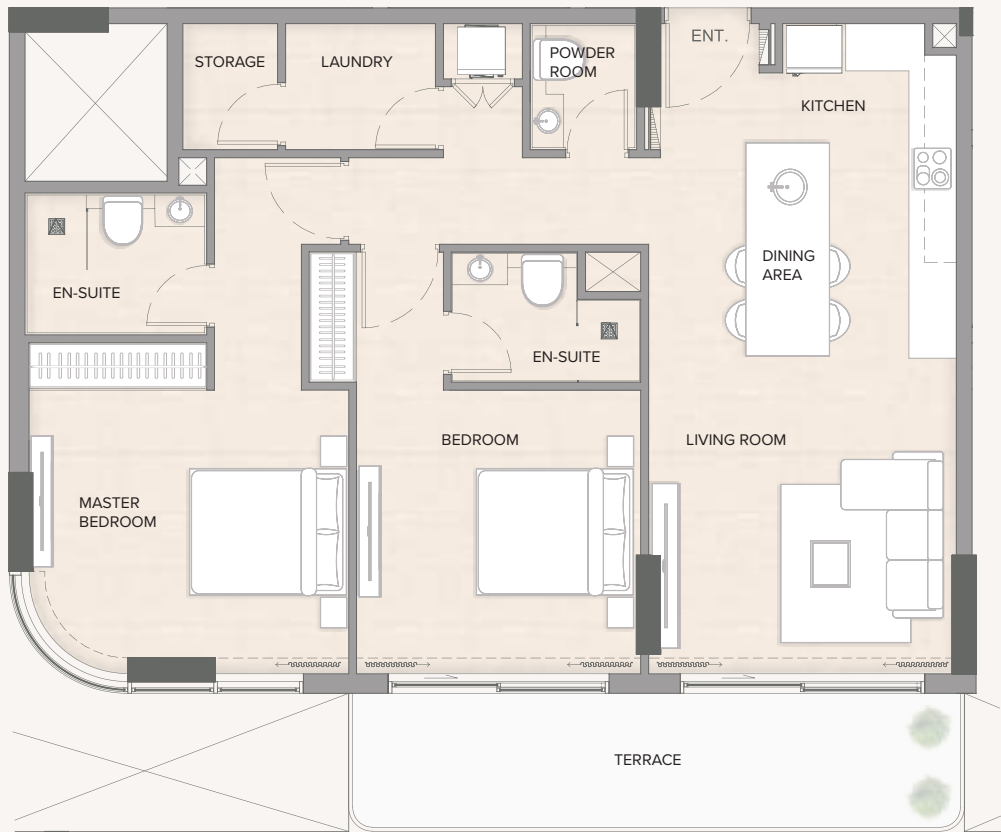


Disclaimer: Any images and visualizations contained herein are provided for illustrative and marketing purposes only. All information contained herein is subject to change without notice and without liability and only the information contained in the final Sales and Purchase Agreement entered into between the Developer and Buyer will have any legal effect. All drawings and dimensions are approximate. Drawings are not to scale and subject to change without notice. The Developer reserves the right to make revisions. The units are taken from the typical floor of a building and dimensions of the units, balcony and the size of columns may vary depending on the floor level and orientation of the unit within the building to comply with the building authority regulations. E&OE



2 BEDROOM - TYPE A5

|               |       |
|---------------|-------|
| Starting from | sqft  |
| Suite Area    | 1,032 |
| Terrace Area  | 154   |
| Total Area    | 1,186 |



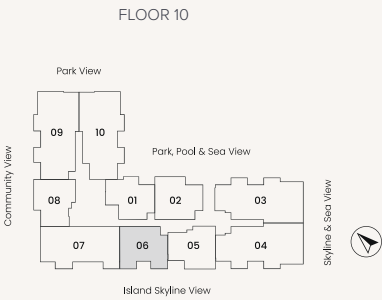
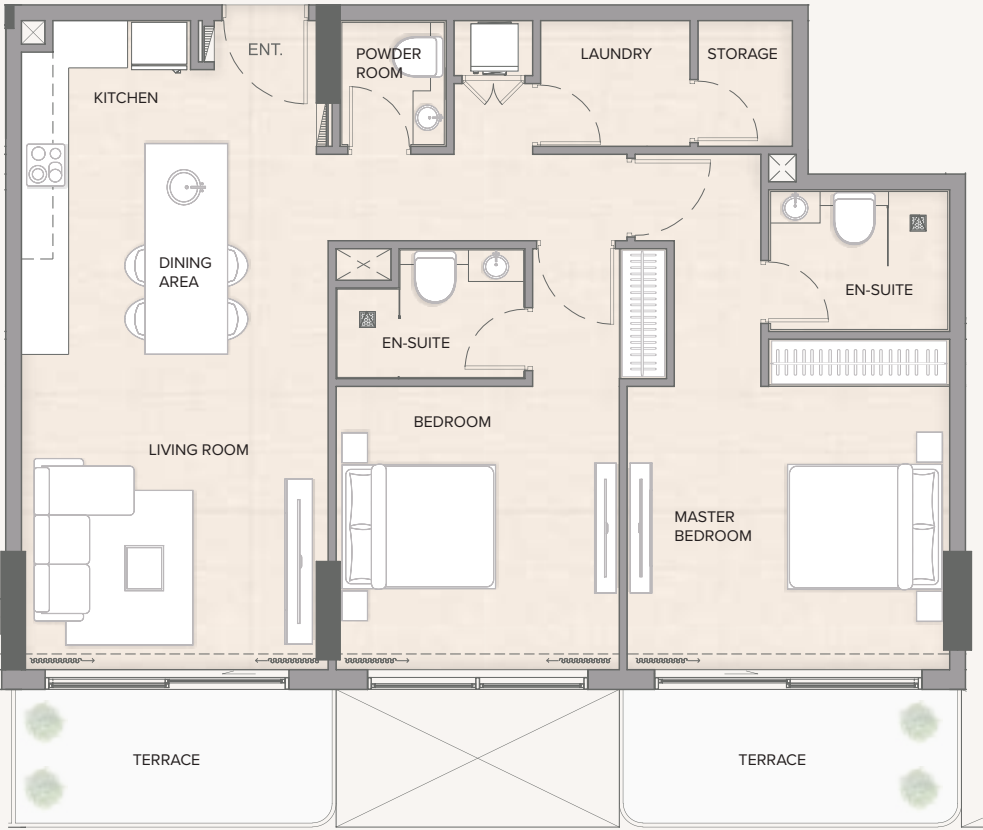
Disclaimer: Any images and visualizations contained herein are provided for illustrative and marketing purposes only. All information contained herein is subject to change without notice and without liability and only the information contained in the final Sales and Purchase Agreement entered into between the Developer and Buyer will have any legal effect. All drawings and dimensions are approximate. Drawings are not to scale and subject to change without notice. The Developer reserves the right to make revisions. The units are taken from the typical floor of a building and dimensions of the units, balcony and the size of columns may vary depending on the floor level and orientation of the unit within the building to comply with the building authority regulations. E&OE





2 BEDROOM - TYPE A7

|               |       |
|---------------|-------|
| Starting from | sqft  |
| Suite Area    | 1,041 |
| Terrace Area  | 166   |
| Total Area    | 1,207 |



Disclaimer: Any images and visualizations contained herein are provided for illustrative and marketing purposes only. All information contained herein is subject to change without notice and without liability and only the information contained in the final Sales and Purchase Agreement entered into between the Developer and Buyer will have any legal effect. All drawings and dimensions are approximate. Drawings are not to scale and subject to change without notice. The Developer reserves the right to make revisions. The units are taken from the typical floor of a building and dimensions of the units, balcony and the size of columns may vary depending on the floor level and orientation of the unit within the building to comply with the building authority regulations. E&OE

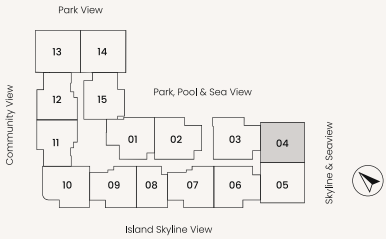


2 BEDROOM - TYPE B1

|               |       |
|---------------|-------|
| Starting from | sqft  |
| Suite Area    | 1,068 |
| Terrace Area  | 127   |
| Total Area    | 1,195 |



FLOOR 1 - 9



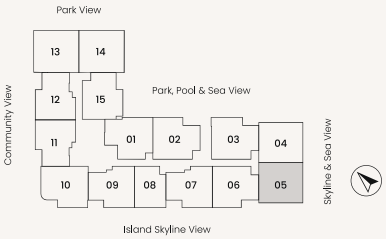
Disclaimer: Any images and visualizations contained herein are provided for illustrative and marketing purposes only. All information contained herein is subject to change without notice and without liability and only the information contained in the final Sales and Purchase Agreement entered into between the Developer and Buyer will have any legal effect. All drawings and dimensions are approximate. Drawings are not to scale and subject to change without notice. The Developer reserves the right to make revisions. The units are taken from the typical floor of a building and dimensions of the units, balcony and the size of columns may vary depending on the floor level and orientation of the unit within the building to comply with the building authority regulations. E&OE

2 BEDROOM - TYPE B2

|               |       |
|---------------|-------|
| Starting from | sqft  |
| Suite Area    | 1,068 |
| Terrace Area  | 127   |
| Total Area    | 1,195 |



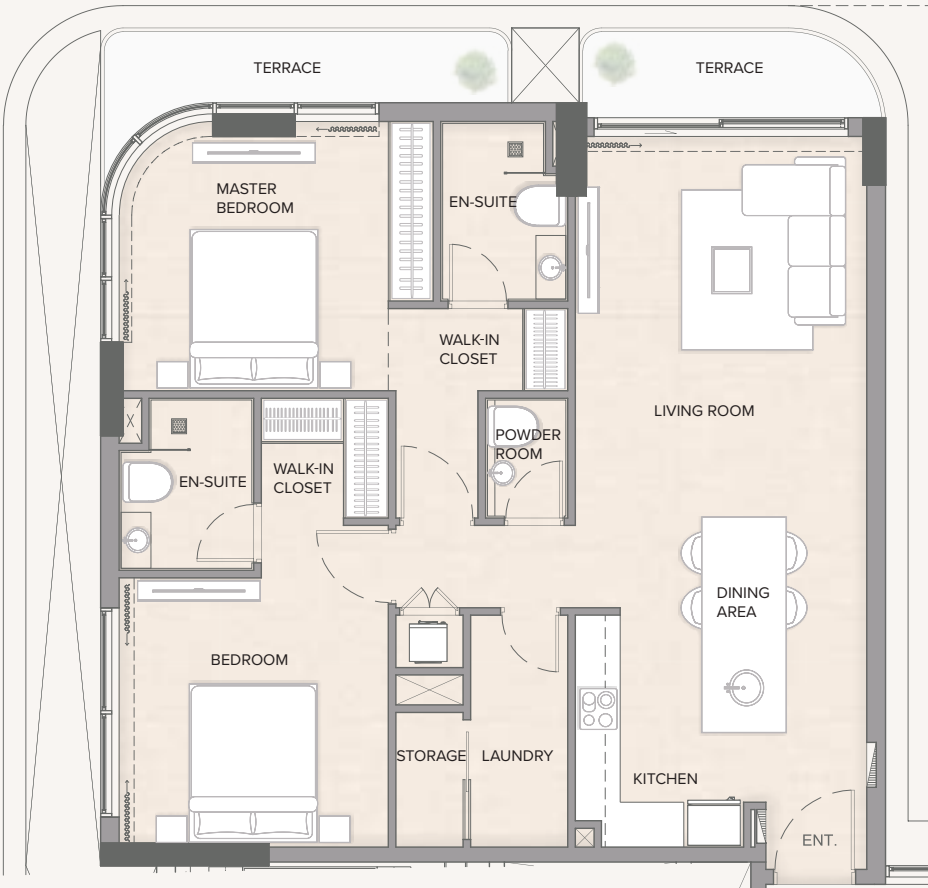
FLOOR 1 - 9



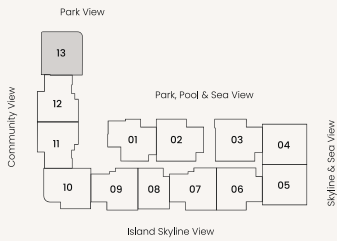
Disclaimer: Any images and visualizations contained herein are provided for illustrative and marketing purposes only. All information contained herein is subject to change without notice and without liability and only the information contained in the final Sales and Purchase Agreement entered into between the Developer and Buyer will have any legal effect. All drawings and dimensions are approximate. Drawings are not to scale and subject to change without notice. The Developer reserves the right to make revisions. The units are taken from the typical floor of a building and dimensions of the units, balcony and the size of columns may vary depending on the floor level and orientation of the unit within the building to comply with the building authority regulations. E&OE

2 BEDROOM - TYPE B6

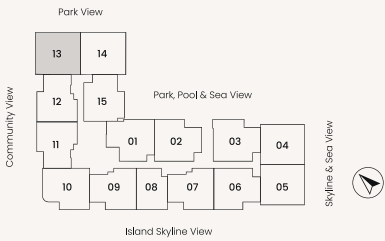
|               |       |
|---------------|-------|
| Starting from | sqft  |
| Suite Area    | 1,078 |
| Terrace Area  | 123   |
| Total Area    | 1,201 |



FLOOR 2



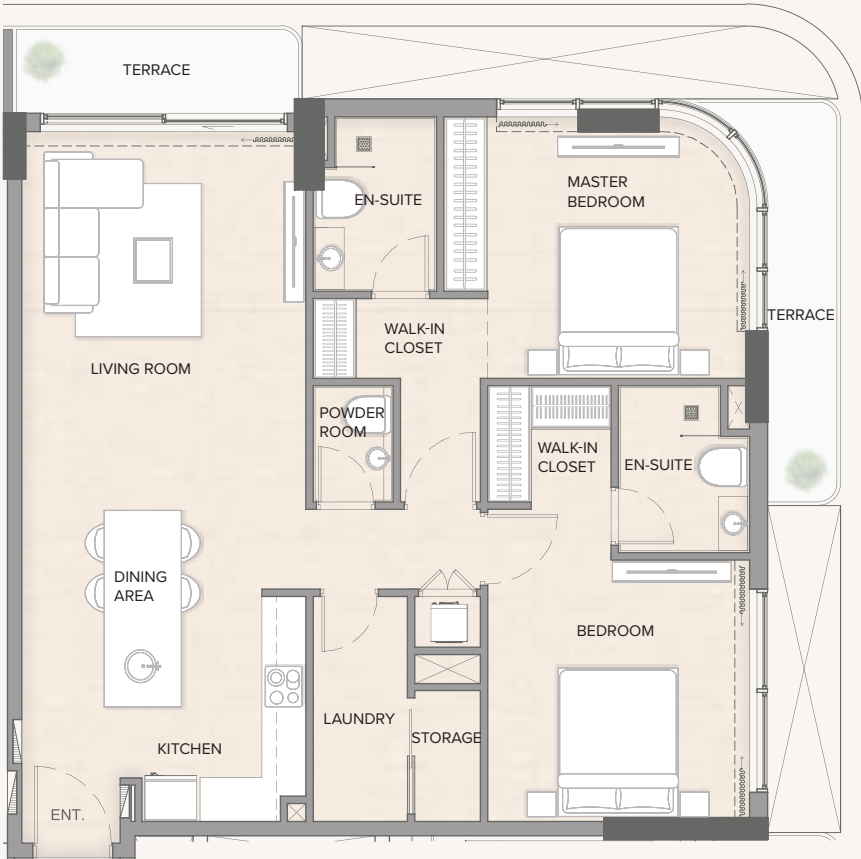
FLOOR 3 - 9



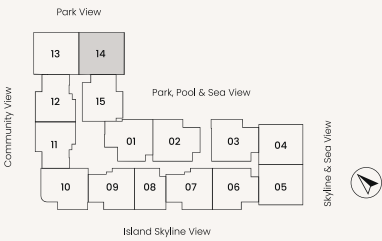
Disclaimer: Any images and visualizations contained herein are provided for illustrative and marketing purposes only. All information contained herein is subject to change without notice and without liability and only the information contained in the final Sales and Purchase Agreement entered into between the Developer and Buyer will have any legal effect. All drawings and dimensions are approximate. Drawings are not to scale and subject to change without notice. The Developer reserves the right to make revisions. The units are taken from the typical floor of a building and dimensions of the units, balcony and the size of columns may vary depending on the floor level and orientation of the unit within the building to comply with the building authority regulations. E&OE

2 BEDROOM - TYPE B6

|               |       |
|---------------|-------|
| Starting from | sqft  |
| Suite Area    | 1,076 |
| Terrace Area  | 126   |
| Total Area    | 1,202 |



FLOOR 3 - 9

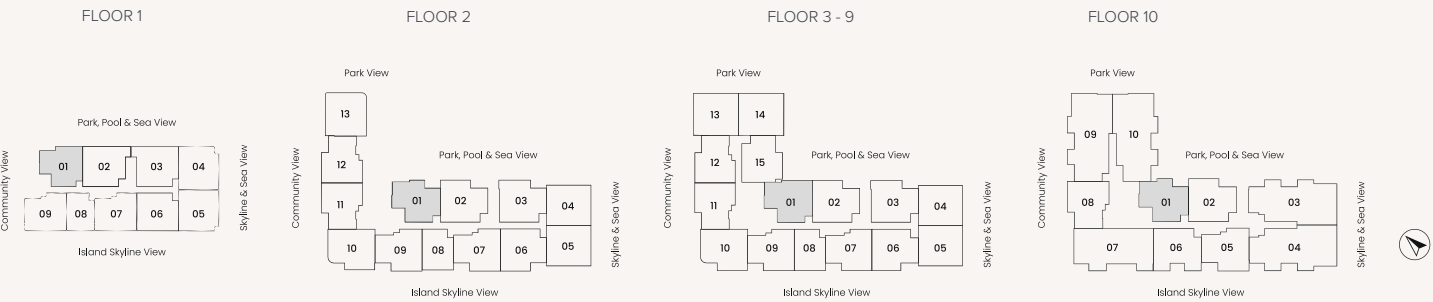


Disclaimer: Any images and visualizations contained herein are provided for illustrative and marketing purposes only. All information contained herein is subject to change without notice and without liability and only the information contained in the final Sales and Purchase Agreement entered into between the Developer and Buyer will have any legal effect. All drawings and dimensions are approximate. Drawings are not to scale and subject to change without notice. The Developer reserves the right to make revisions. The units are taken from the typical floor of a building and dimensions of the units, balcony and the size of columns may vary depending on the floor level and orientation of the unit within the building to comply with the building authority regulations. E&OE



2 BEDROOM - TYPE C

|               |       |
|---------------|-------|
| Starting from | sqft  |
| Suite Area    | 982   |
| Terrace Area  | 76    |
| Total Area    | 1,059 |



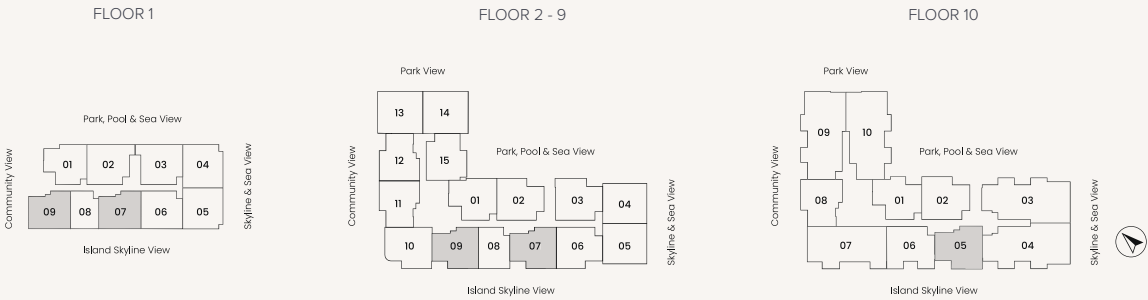
Disclaimer: Any images and visualizations contained herein are provided for illustrative and marketing purposes only. All information contained herein is subject to change without notice and without liability and only the information contained in the final Sales and Purchase Agreement entered into between the Developer and Buyer will have any legal effect. All drawings and dimensions are approximate. Drawings are not to scale and subject to change without notice. The Developer reserves the right to make revisions. The units are taken from the typical floor of a building and dimensions of the units, balcony and the size of columns may vary depending on the floor level and orientation of the unit within the building to comply with the building authority regulations. E&OE





2 BEDROOM - TYPE D

|               |       |
|---------------|-------|
| Starting from | sqft  |
| Suite Area    | 976   |
| Terrace Area  | 155   |
| Total Area    | 1,131 |

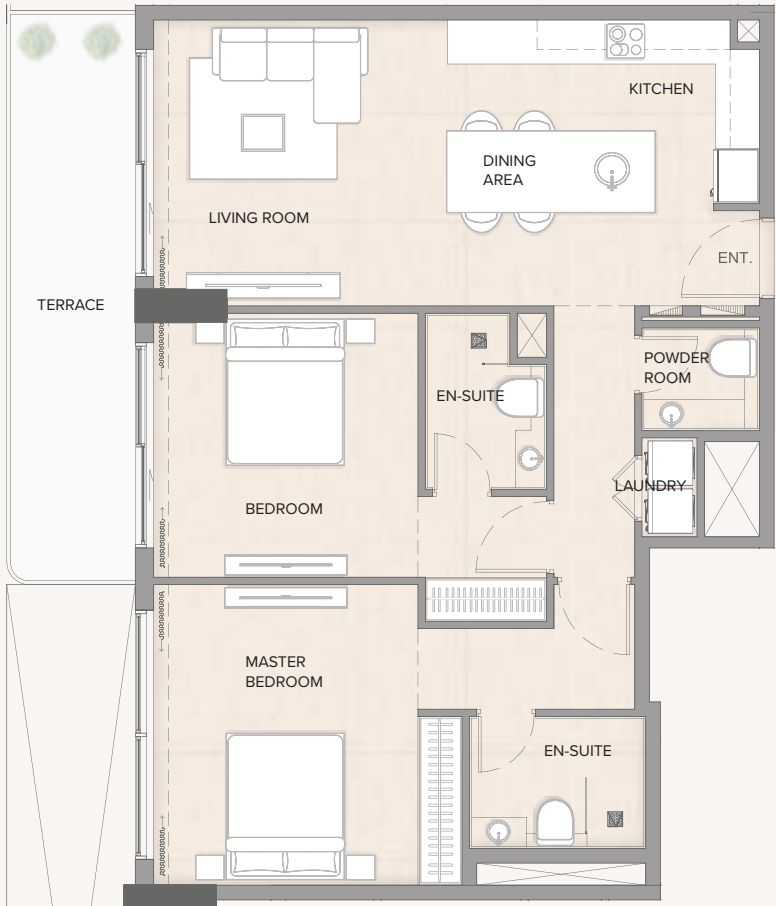


Disclaimer: Any images and visualizations contained herein are provided for illustrative and marketing purposes only. All information contained herein is subject to change without notice and without liability and only the information contained in the final Sales and Purchase Agreement entered into between the Developer and Buyer will have any legal effect. All drawings and dimensions are approximate. Drawings are not to scale and subject to change without notice. The Developer reserves the right to make revisions. The units are taken from the typical floor of a building and dimensions of the units, balcony and the size of columns may vary depending on the floor level and orientation of the unit within the building to comply with the building authority regulations. E&OE

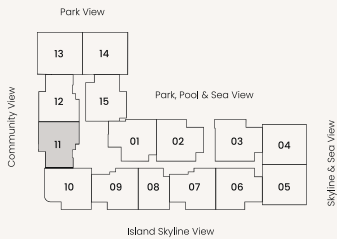


2 BEDROOM - TYPE D2

|               |       |
|---------------|-------|
| Starting from | sqft  |
| Suite Area    | 979   |
| Terrace Area  | 155   |
| Total Area    | 1,134 |



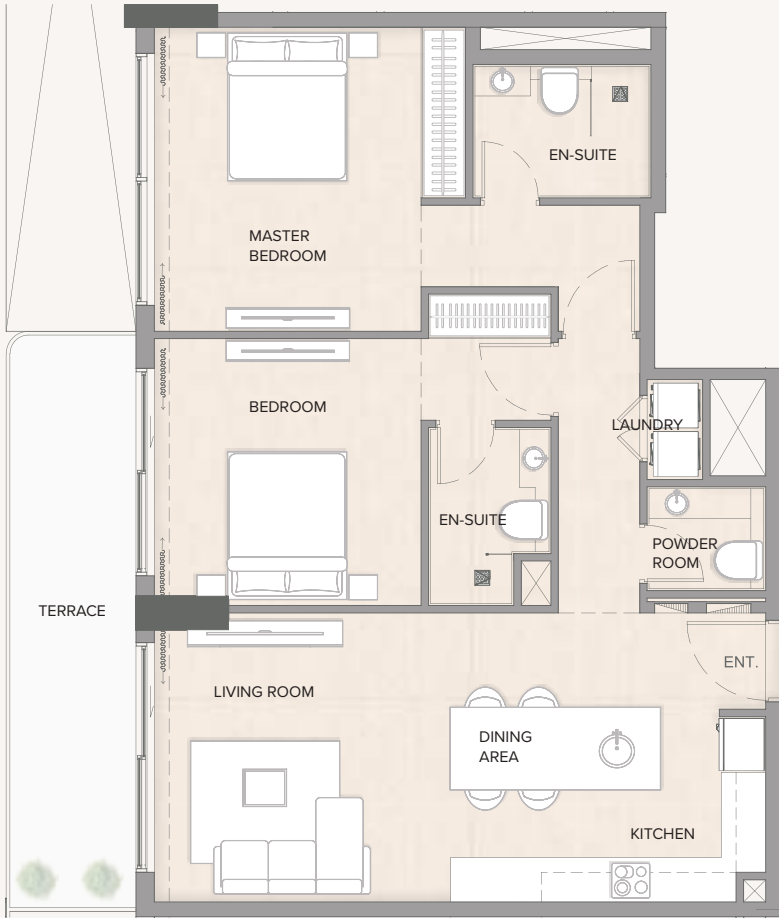
FLOOR 2 - 9



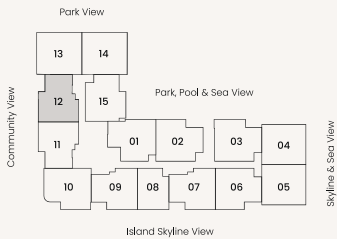
Disclaimer: Any images and visualizations contained herein are provided for illustrative and marketing purposes only. All information contained herein is subject to change without notice and without liability and only the information contained in the final Sales and Purchase Agreement entered into between the Developer and Buyer will have any legal effect. All drawings and dimensions are approximate. Drawings are not to scale and subject to change without notice. The Developer reserves the right to make revisions. The units are taken from the typical floor of a building and dimensions of the units, balcony and the size of columns may vary depending on the floor level and orientation of the unit within the building to comply with the building authority regulations. E&OE

2 BEDROOM - TYPE D2

|               |       |
|---------------|-------|
| Starting from | sqft  |
| Suite Area    | 979   |
| Terrace Area  | 155   |
| Total Area    | 1,134 |



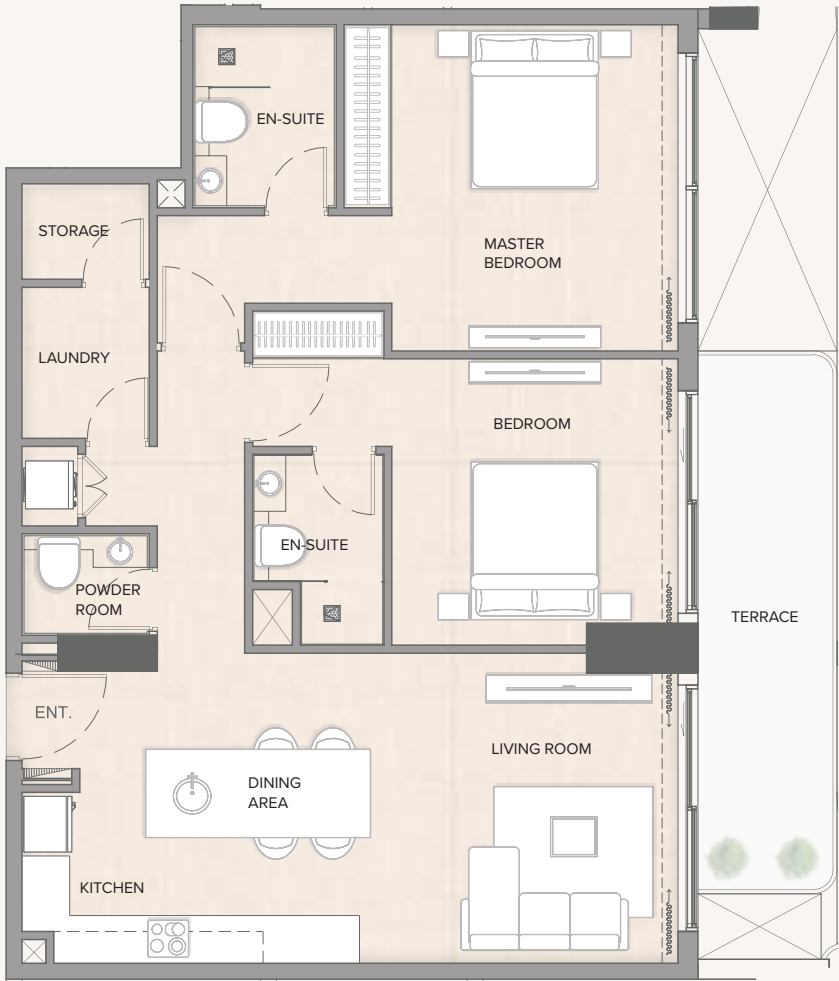
FLOOR 2 - 9



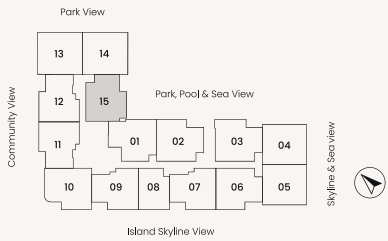
Disclaimer: Any images and visualizations contained herein are provided for illustrative and marketing purposes only. All information contained herein is subject to change without notice and without liability and only the information contained in the final Sales and Purchase Agreement entered into between the Developer and Buyer will have any legal effect. All drawings and dimensions are approximate. Drawings are not to scale and subject to change without notice. The Developer reserves the right to make revisions. The units are taken from the typical floor of a building and dimensions of the units, balcony and the size of columns may vary depending on the floor level and orientation of the unit within the building to comply with the building authority regulations. E&OE

2 BEDROOM - TYPE D2

|               |       |
|---------------|-------|
| Starting from | sqft  |
| Suite Area    | 1,039 |
| Terrace Area  | 134   |
| Total Area    | 1,174 |



FLOOR 3 - 9



Disclaimer: Any images and visualizations contained herein are provided for illustrative and marketing purposes only. All information contained herein is subject to change without notice and without liability and only the information contained in the final Sales and Purchase Agreement entered into between the Developer and Buyer will have any legal effect. All drawings and dimensions are approximate. Drawings are not to scale and subject to change without notice. The Developer reserves the right to make revisions. The units are taken from the typical floor of a building and dimensions of the units, balcony and the size of columns may vary depending on the floor level and orientation of the unit within the building to comply with the building authority regulations. E&OE



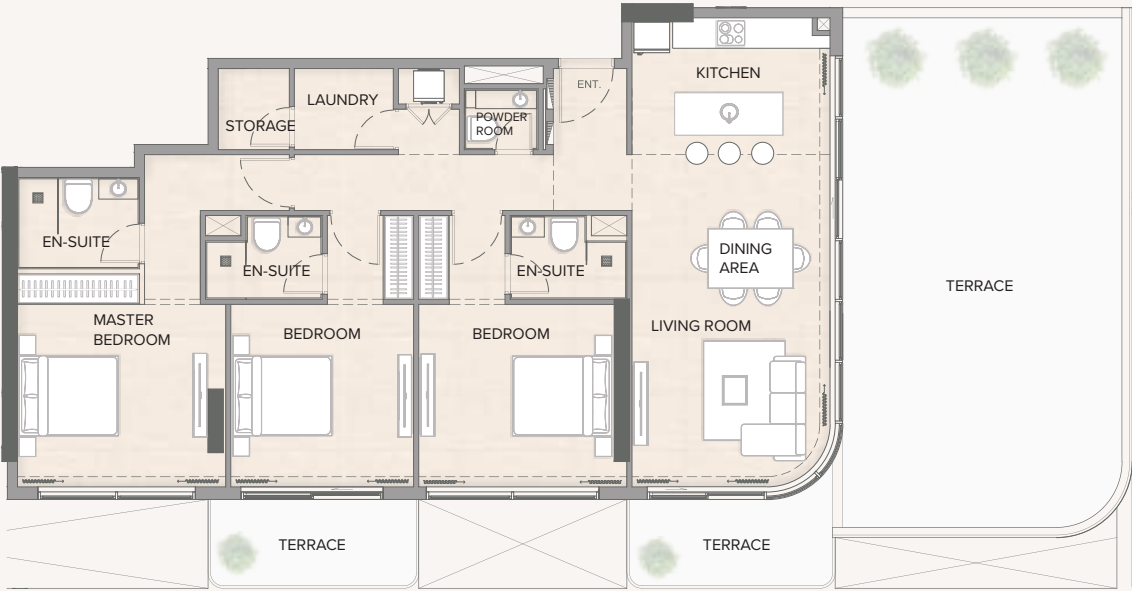
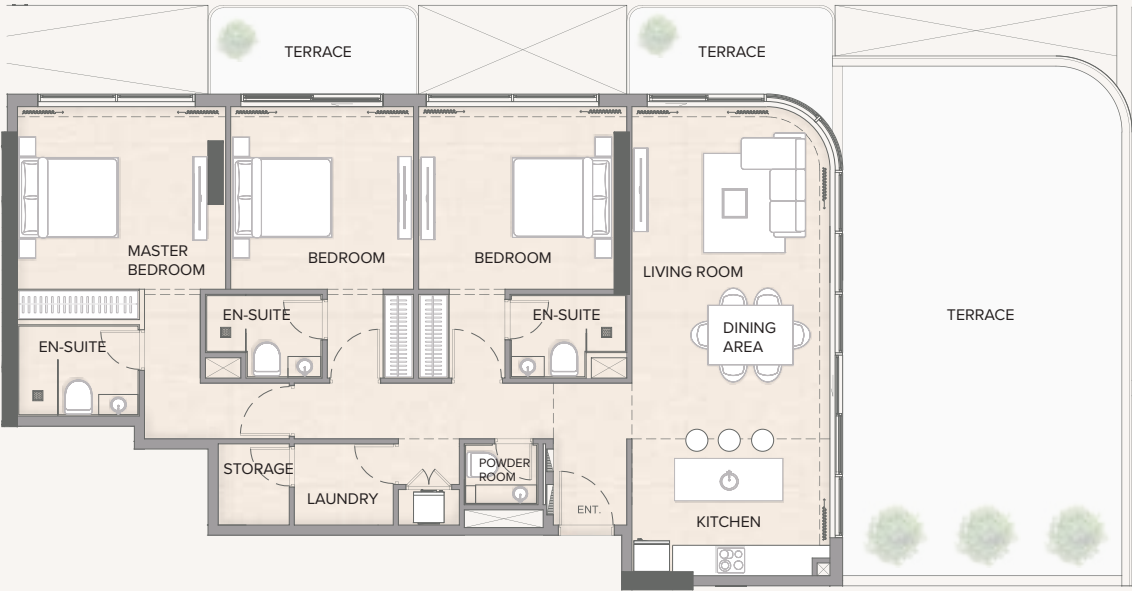


3 BEDROOM - TYPE A

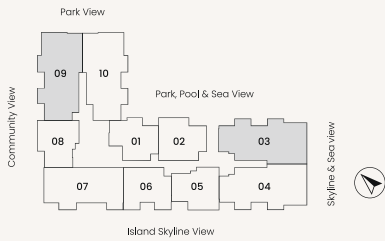
|               |       |
|---------------|-------|
| Starting from | sqft  |
| Suite Area    | 1,418 |
| Terrace Area  | 791   |
| Total Area    | 2,209 |

3 BEDROOM - TYPE A

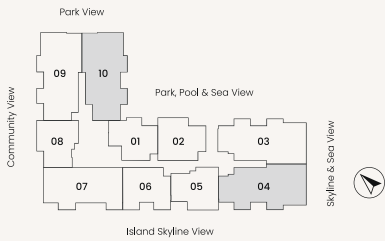
|               |       |
|---------------|-------|
| Starting from | sqft  |
| Suite Area    | 1,427 |
| Terrace Area  | 797   |
| Total Area    | 2,224 |



FLOOR 10



FLOOR 10



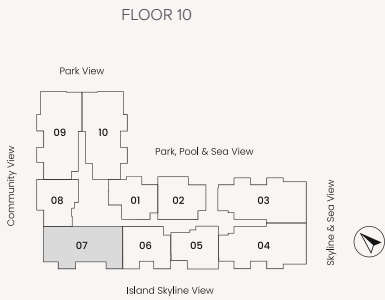
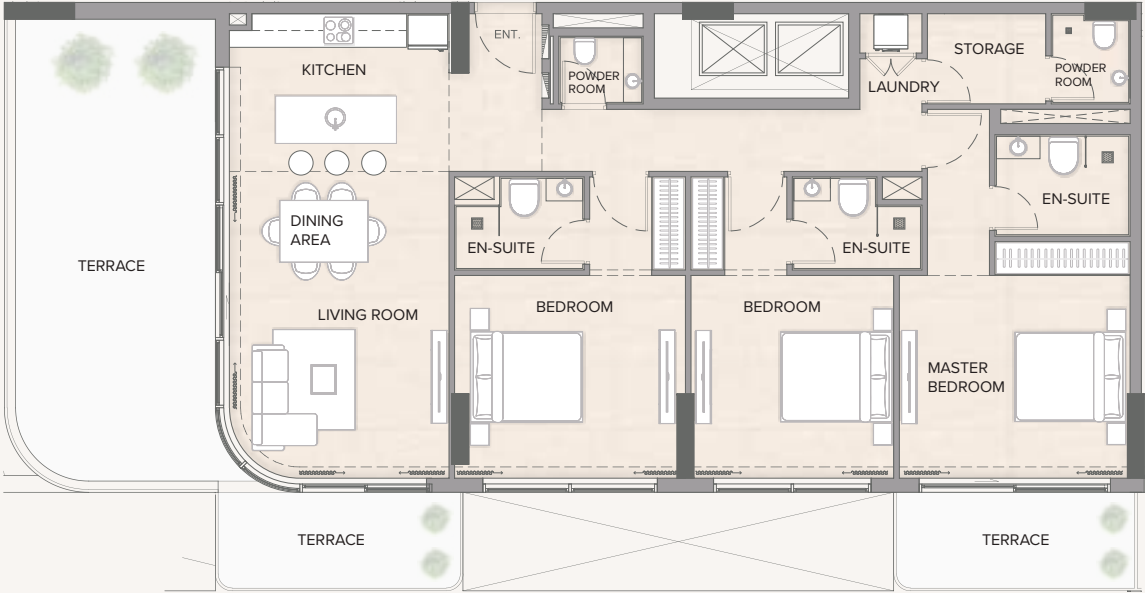
Disclaimer: Any images and visualizations contained herein are provided for illustrative and marketing purposes only. All information contained herein is subject to change without notice and without liability and only the information contained in the final Sales and Purchase Agreement entered into between the Developer and Buyer will have any legal effect. All drawings and dimensions are approximate. Drawings are not to scale and subject to change without notice. The Developer reserves the right to make revisions. The units are taken from the typical floor of a building and dimensions of the units, balcony and the size of columns may vary depending on the floor level and orientation of the unit within the building to comply with the building authority regulations. E&OE

Disclaimer: Any images and visualizations contained herein are provided for illustrative and marketing purposes only. All information contained herein is subject to change without notice and without liability and only the information contained in the final Sales and Purchase Agreement entered into between the Developer and Buyer will have any legal effect. All drawings and dimensions are approximate. Drawings are not to scale and subject to change without notice. The Developer reserves the right to make revisions. The units are taken from the typical floor of a building and dimensions of the units, balcony and the size of columns may vary depending on the floor level and orientation of the unit within the building to comply with the building authority regulations. E&OE



3 BEDROOM - TYPE B

|               |       |
|---------------|-------|
| Starting from | sqft  |
| Suite Area    | 1,380 |
| Terrace Area  | 524   |
| Total Area    | 1,904 |



Disclaimer: Any images and visualizations contained herein are provided for illustrative and marketing purposes only. All information contained herein is subject to change without notice and without liability and only the information contained in the final Sales and Purchase Agreement entered into between the Developer and Buyer will have any legal effect. All drawings and dimensions are approximate. Drawings are not to scale and subject to change without notice. The Developer reserves the right to make revisions. The units are taken from the typical floor of a building and dimensions of the units, balcony and the size of columns may vary depending on the floor level and orientation of the unit within the building to comply with the building authority regulations. E&OE



ARKĀ

ENCLAVE

---

BY ATMOSPHERE LIVING