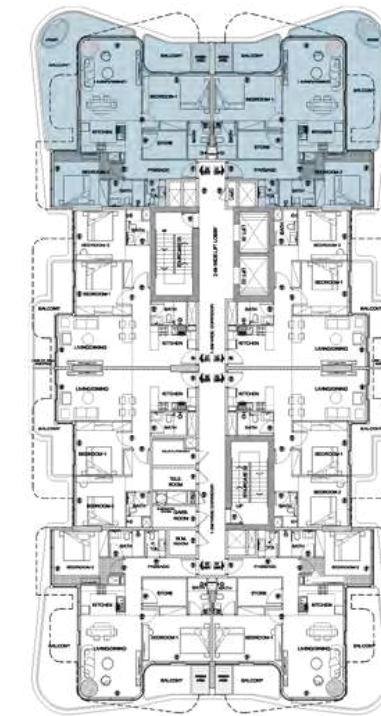


TROPICAN SERENIQUE
RESIDENCES



*2 BR Layouts, Furniture,
Fittings and Finishes*



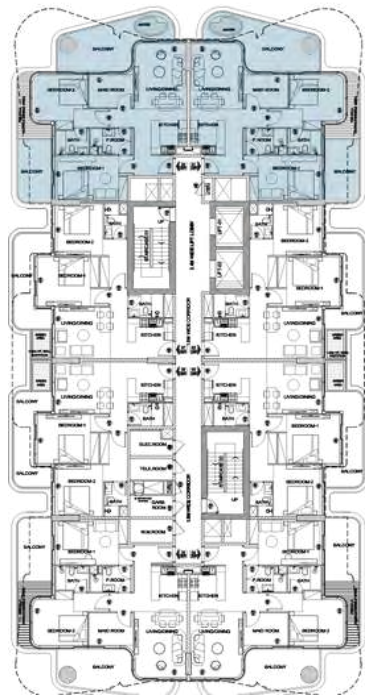
FLOOR PLAN 2BHK TYPE A

Floor 2 , 4 , 6 , & 8

Size : 1483 SQ FT

LIVING & DINING
2 BEDROOMS, KITCHEN
3 BATHROOMS, STORE ROOMS

Disclaimer: All information, dimensions, sizes, floor plans, layouts, views , interiors, furniture, finishes, appliances, materials, specifications, and other visuals presented are for illustrative reference purposes only and are subject to change without prior notice.



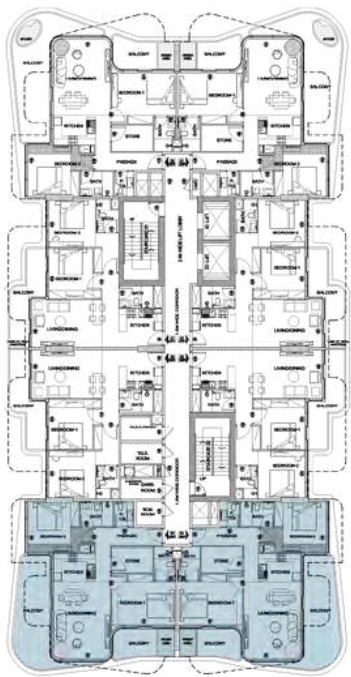
FLOOR PLAN
2BHK TYPE B

Floor 1 , 3 , 5 , 7 & 9
Size : 1364 SQ FT

LIVING & DINING
2 BEDROOMS, KITCHEN
2 BATHROOMS



Disclaimer: All information, dimensions, sizes, floor plans, layouts, views , interiors, furniture, finishes, appliances, materials, specifications, and other visuals presented are for illustrative reference purposes only and are subject to change without prior notice.

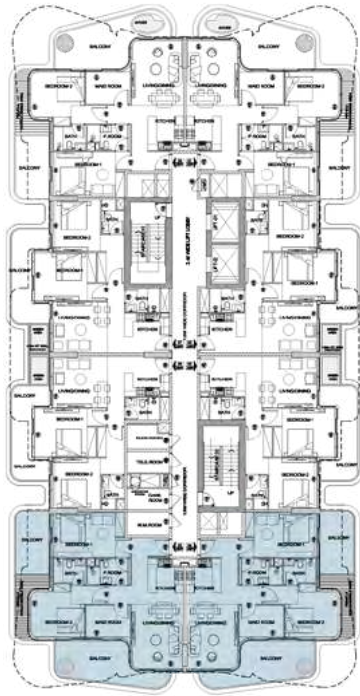


FLOOR PLAN
2BHK TYPE C

Floor 2nd , 4th , 6th , & 8th
Size : 1414 SQ FT

LIVING & DINING
2 BEDROOMS, KITCHEN
3 BATHROOMS, STORE ROOMS

Disclaimer: All information, dimensions, sizes, floor plans, layouts, views , interiors, furniture, finishes, appliances, materials, specifications, and other visuals presented are for illustrative reference purposes only and are subject to change without prior notice.



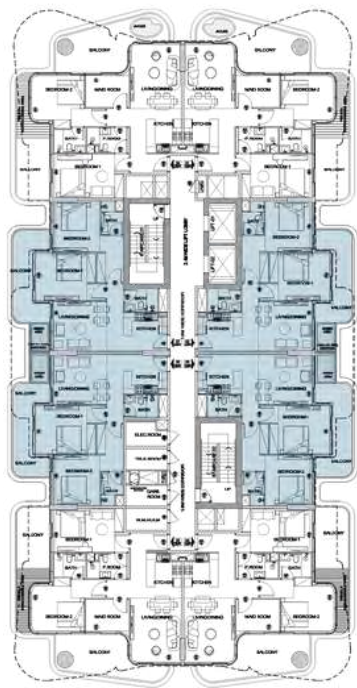
FLOOR PLAN
2BHK TYPE D

Floor 1st , 3rd , 5th , 7th & 9th
Size: 1326 SQ FT

LIVING & DINING
2 BEDROOMS, KITCHEN
2 BATHROOMS

Disclaimer: All information, dimensions, sizes, floor plans, layouts, views , interiors, furniture, finishes, appliances, materials, specifications, and other visuals presented are for illustrative reference purposes only and are subject to change without prior notice.



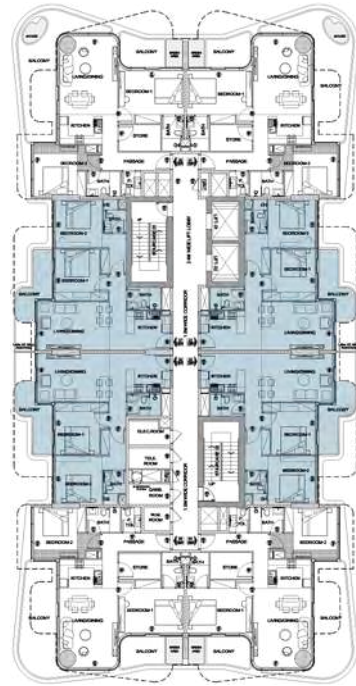


FLOOR PLAN
2BHK TYPE E

Floor 1st , 3rd , 5th , 7th & 9th
Size : 1036 SQ FT

LIVING & DINING
2 BEDROOMS, KITCHEN
3 BATHROOMS

Disclaimer: All information, dimensions, sizes, floor plans, layouts, views , interiors, furniture, finishes, appliances, materials, specifications, and other visuals presented are for illustrative reference purposes only and are subject to change without prior notice.



FLOOR PLAN
2BHK TYPE F

Floor 2nd , 4th , 6th , & 8th
Size: 980 SQ FT | 2BHK Type 2

LIVING & DINING
2 BEDROOMS, KITCHEN
2 BATHROOMS

Disclaimer: All information, dimensions, sizes, floor plans, layouts, views , interiors, furniture, finishes, appliances, materials, specifications, and other visuals presented are for illustrative reference purposes only and are subject to change without prior notice.



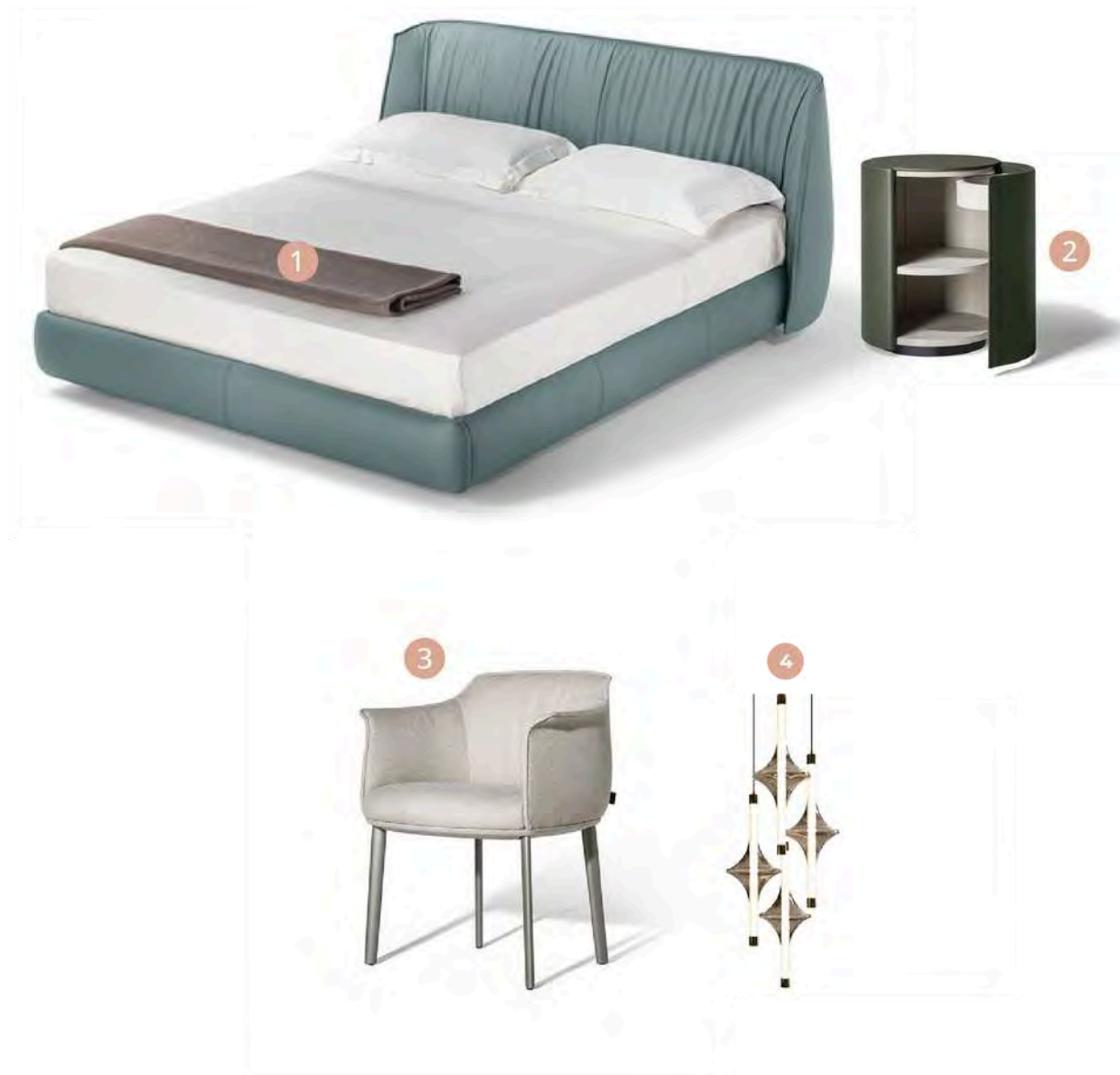


1. Sofa with painted metal feet and fabric-finish upholstery
2. Classic venetian style chair with leather upholstery
3. Modern floor-poufs with sculptural aesthetics and dual-material finish
4. Soft-padded chair with fabric and leather finishes
5. Textured marble top on slender steel stem
6. Clear glass-top table with textured stone finish base
7. Monolithic table with sculptured design and marble finish
8. Glass modular-lamp enriched with fine sand powder for elegant hues
9. Soft-light lamp held on an abstract geometric sculpture stem



Disclaimer: All information, dimensions, sizes, floor plans, layouts, views, interiors, furniture, finishes, appliances, materials, specifications, and other visuals presented are for illustrative reference purposes only and are subject to change without prior notice.

1. Wide-based bed with cushioned leather headboard and base
2. Sleek, cylindrical wood unit with smooth leather-finish exterior
3. Soft-padded leather chair with contrast-stitching and wooden legs
4. Borosilicate glass-lamp with natural brass accents



Disclaimer: All information, dimensions, sizes, floor plans, layouts, views, interiors, furniture, finishes, appliances, materials, specifications, and other visuals presented are for illustrative reference purposes only and are subject to change without prior notice.



1. White ceramic wall-hung WC with integrated siphon
2. Curve-cut, translucent basin with coloured hues
3. Solid brass, rounded hook with reflective finish
4. Ergonomic bathtub with integrated seat and curved headrest
5. Brushed nickel-finish freestanding bath mixer with automatic diverter
6. Wall-mounted push-button douchette with steel and brass finish
7. Brass wall-mounted shower mixer with two-way water outlet & handshower hook
8. Brass-finish, metal body-shower topped with high-quality rubber
9. High-version, long-spout basin mixer with brass finish



Disclaimer: All information, dimensions, sizes, floor plans, layouts, views, interiors, furniture, finishes, appliances, materials, specifications, and other visuals presented are for illustrative reference purposes only and are subject to change without prior notice.

1. Mediterranean style short-table with natural wood-finish stem
2. Solid teak-wood outdoor chair with plush, removable cushion
3. Tunisian-style marble-blending Table with striking brass veining
4. Soft-hue lamp with brass-finish geometric-pattern stem



Disclaimer: All information, dimensions, sizes, floor plans, layouts, views, interiors, furniture, finishes, appliances, materials, specifications, and other visuals presented are for illustrative reference purposes only and are subject to change without prior notice.



1. Twin-door fridge with advanced-systems, cooling-circuits & illuminated glass-shelves
2. Oven with microwave function, automatic menu-cooking and motion-react sensors
3. 4 Burner gas-hob with wok-burners mounted on easy-to-clean ceramic glass-surface
4. Washer-dryer with condenser technology designed for quiet operation
5. Fully-integrated dishwasher with eco power-drive
6. Stainless-steel grease-filter, extractor unit with LED lighting and light-touch switches
7. Warm bronze-brushed sink-mixer with swivel spout-system



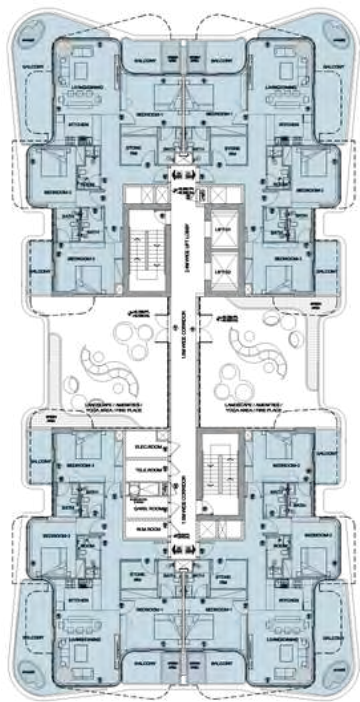
Disclaimer: All information, dimensions, sizes, floor plans, layouts, views, interiors, furniture, finishes, appliances, materials, specifications, and other visuals presented are for illustrative reference purposes only and are subject to change without prior notice.

1. Cross-cut mottled-pattern washed in natural stone look
2. Cream-washed marble creating rich brocade-fabric finish
3. High-quality stoneware with delicate, white veining
4. Decorative, small-format ceramics with a beveled edge
5. Vibrant custom-mosaic tiles offering natural variations and rich textures
6. Multilaminar wood-veneer colored in non-toxic dyes
7. Scratch and heat-resistant, woodgrain laminate design
8. Fine finish embodies the natural touch of wood attaining a matte-look
9. High-gloss lacquered finish MDF-engineered wood-fibres polished for smooth surface
10. High-quality upholstery in soluble-dyes offering semi-matte look
11. Screen-printed wall-coverings inspired by traditional henna art
12. Wallpaper designed to evoke imagery of water representing dynamic movement
13. Stone-look material in solid colors offering rustic touch and modern sparkle



Disclaimer: All information, dimensions, sizes, floor plans, layouts, views, interiors, furniture, finishes, appliances, materials, specifications, and other visuals presented are for illustrative reference purposes only and are subject to change without prior notice.

*3 BR Layouts, Furniture,
Fittings and Finishes*

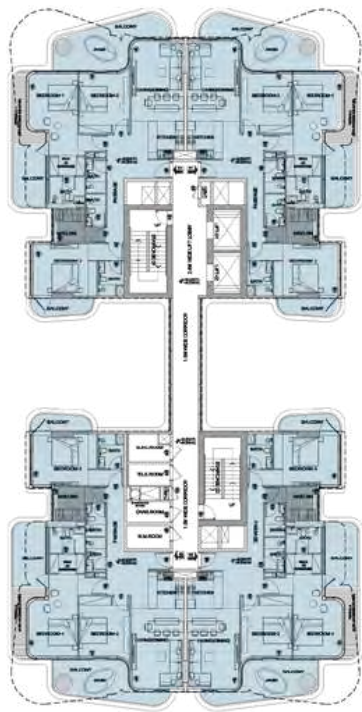


FLOOR PLAN
3BHK TYPE A-C

Floor 10th & 12th
Size : 1832 to 1902 SQ FT

LIVING & DINING
3 BEDROOMS, KITCHEN
4 BATHROOMS, STORE ROOMS

Disclaimer: All information, dimensions, sizes, floor plans, layouts, views , interiors, furniture, finishes, appliances, materials, specifications, and other visuals presented are for illustrative reference purposes only and are subject to change without prior notice.



FLOOR PLAN
3BHK TYPE B-D

Floor 11th
Size: 1808 to 1856 SQ FT

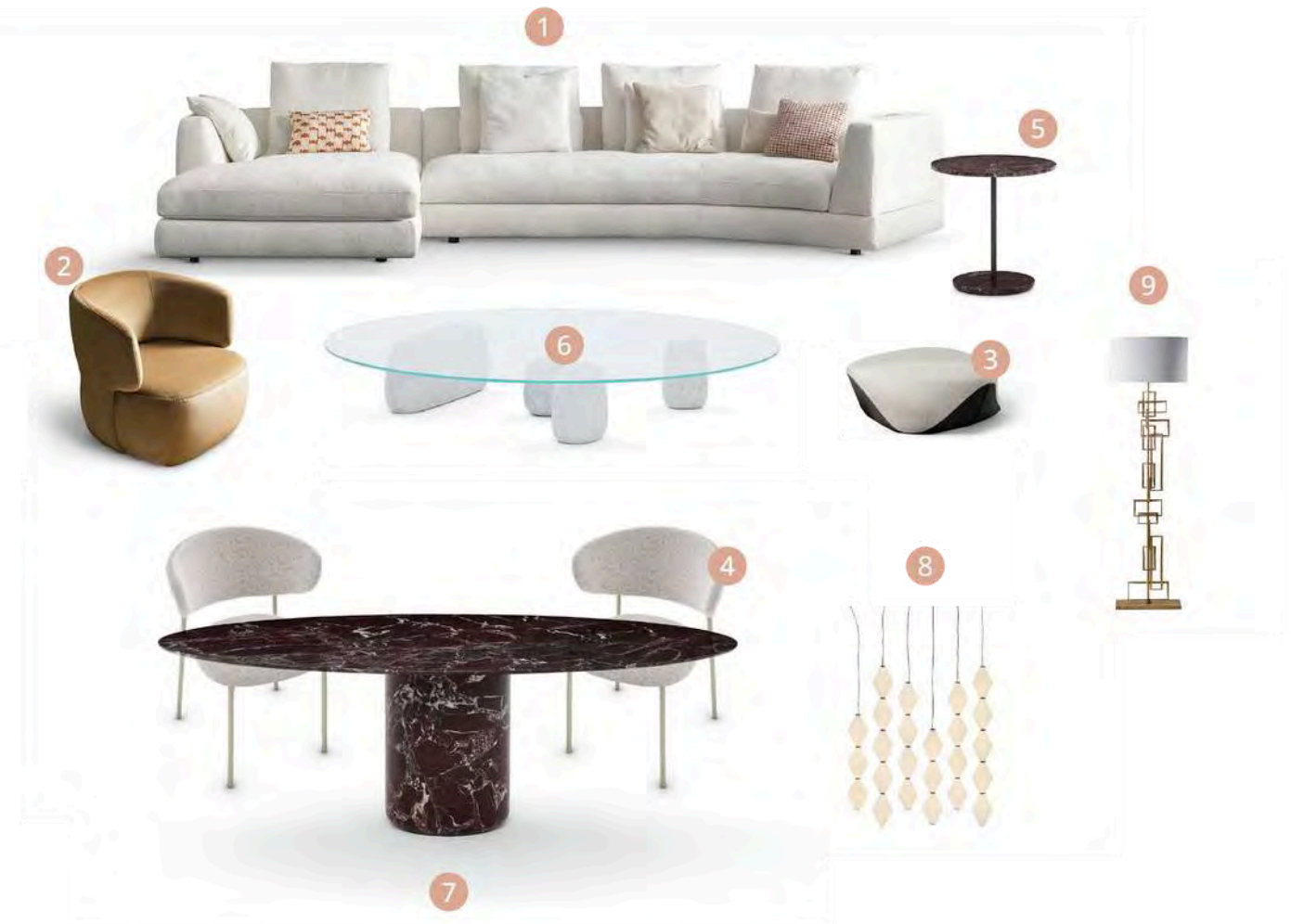
LIVING & DINING
3 BEDROOMS, KITCHEN
4 BATHROOMS,
STUDY/KIDS ROOM

Disclaimer: All information, dimensions, sizes, floor plans, layouts, views , interiors, furniture, finishes, appliances, materials, specifications, and other visuals presented are for illustrative reference purposes only and are subject to change without prior notice.





1. Sofa with painted metal feet and fabric-finish upholstery
2. Classic venetian style chair with leather upholstery
3. Modern floor -poufs with sculptural aesthetics and dual-material finish
4. Soft-padded chair with fabric and leather finishes
5. Textured marble top on slender steel stem
6. Clear glass-top table with textured stone finish base
7. Monolithic table with sculptured design and marble finish
8. Glass modular-lamp enriched with fine sand powder for elegant hues
9. Soft-light lamp held on an abstract geometric sculpture stem



Disclaimer: All information, dimensions, sizes, floor plans, layouts, views, interiors, furniture, finishes, appliances, materials, specifications, and other visuals presented are for illustrative reference purposes only and are subject to change without prior notice.

1. Wide-based bed with cushioned leather headboard and base
2. Sleek, cylindrical wood unit with smooth leather-finish exterior
3. Soft-padded leather chair with contrast-stitching and wooden legs
4. Borosilicate glass-lamp with natural brass accents
5. Softlight lamp with cream linen lined cover and bobbled surface texture stem

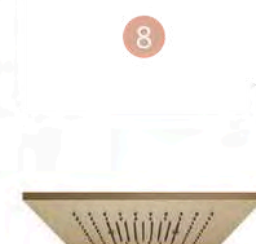


Disclaimer: All information, dimensions, sizes, floor plans, layouts, views, interiors, furniture, finishes, appliances, materials, specifications, and other visuals presented are for illustrative reference purposes only and are subject to change without prior notice.





1. White ceramic wall-hung WC with integrated siphon
2. Curve-cut, translucent basin with coloured hues
3. Solid brass, rounded hook with reflective finish
4. Ergonomic bathtub with integrated seat and curved headrest
5. Brushed nickel-finish freestanding bath mixer with automatic diverter
6. Wall-mounted push-button douchette with steel and brass finish
7. Brass wall-mounted shower mixer with two-way water outlet & handshower hook
8. Brass-finish, metal body-shower topped with high-quality rubber
9. High-version, long-spout basin mixer with brass finish



Disclaimer: All information, dimensions, sizes, floor plans, layouts, views, interiors, furniture, finishes, appliances, materials, specifications, and other visuals presented are for illustrative reference purposes only and are subject to change without prior notice.

1. Mediterranean style short-table with natural wood-finish stem
2. Solid teak-wood outdoor chair with plush, removable cushion
3. Tunisian-style marble-blending Table with striking brass veining
4. Soft-hue lamp with brass-finish geometric-pattern stem

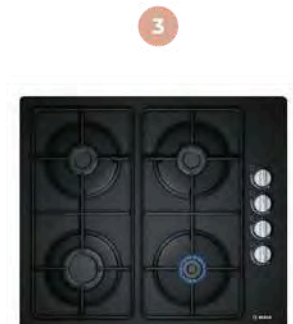


Disclaimer: All information, dimensions, sizes, floor plans, layouts, views, interiors, furniture, finishes, appliances, materials, specifications, and other visuals presented are for illustrative reference purposes only and are subject to change without prior notice.



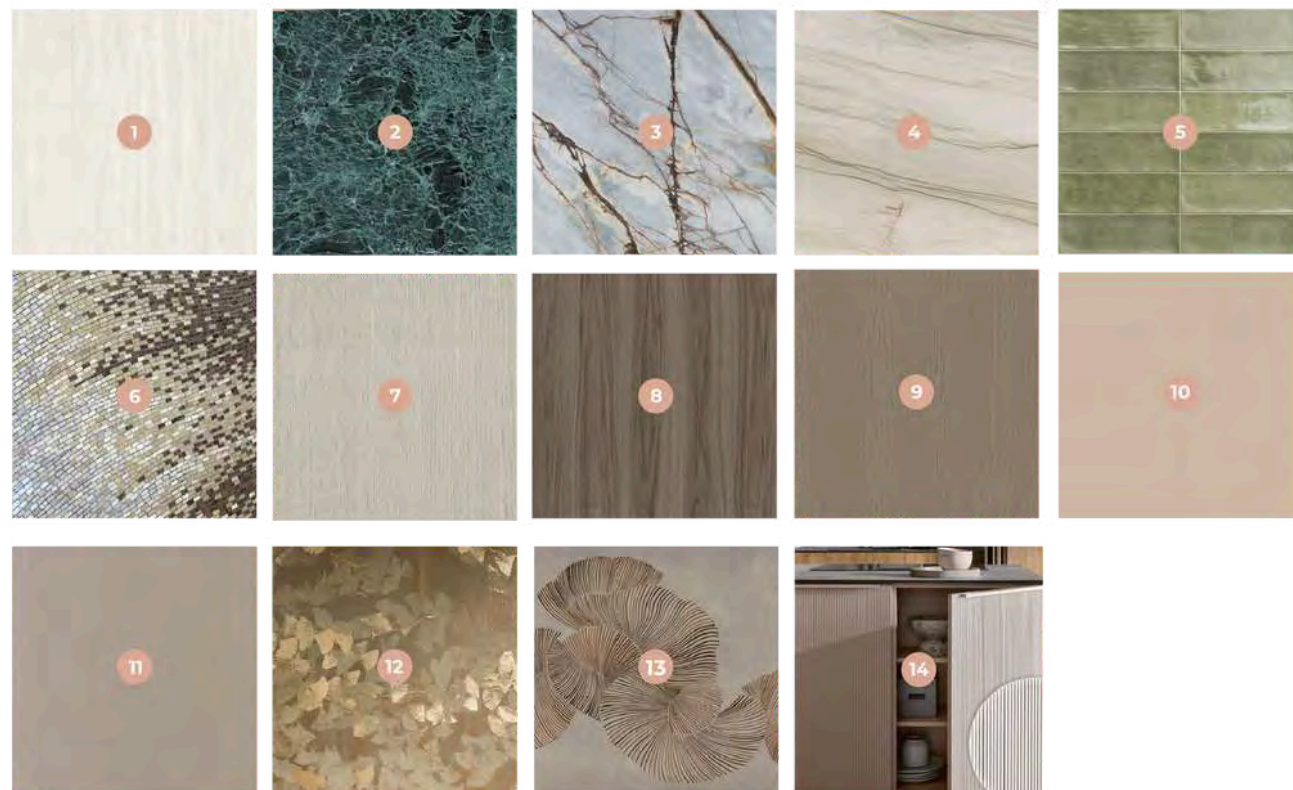


1. Twin-door fridge with advanced-systems, cooling-circuits & illuminated glass-shelves
2. Oven with microwave function, automatic menu-cooking and motion-react sensors
3. 4 Burner gas-hob with wok-burners mounted on easy-to-clean ceramic glass-surface
4. Washer-dryer with condenser technology designed for quiet operation
5. Fully-integrated dishwasher with eco power-drive
6. Stainless-steel grease-filter, extractor unit with LED lighting and light-touch switches
7. Warm bronze-brushed sink-mixer with swivel spout-system



Disclaimer: All information, dimensions, sizes, floor plans, layouts, views, interiors, furniture, finishes, appliances, materials, specifications, and other visuals presented are for illustrative reference purposes only and are subject to change without prior notice.

1. Cross-cut mottled-pattern washed in natural stone look
2. Striking, green marble with distinctive Italian white-vein pattern
3. Turkish-style grey marble with geometric umber and chestnut veins
4. Green and grey quartzite with slender, elegant veins
5. Decorative, small-format ceramics with a beveled edge
6. Wind-inspired mosaic made with tiny tiles for a detailed aesthetic effect
7. Multilaminar wood-veneer colored in non-toxic dyes
8. Scratch and heat resistant, woodgrain laminate design,
9. Fine finish embodies the natural touch of wood attaining a matte-look
10. High-gloss lacquered finish MDF-engineered wood-fibres polished for smooth surface
11. High-quality upholstery in soluble-dyes offering semi-matte look
12. Screenprinted wallcoverings inspired by traditional henna art
13. Wallpaper designed to evoke imagery of water representing dynamic movement
14. Sophisticated surface with upturned handles, finished with fine, verticle linings



Disclaimer: All information, dimensions, sizes, floor plans, layouts, views, interiors, furniture, finishes, appliances, materials, specifications, and other visuals presented are for illustrative reference purposes only and are subject to change without prior notice.

FAKHRUDDIN
PROPERTIES