





# Seamont

---

AUTOGRAPH COLLECTION®  
RESIDENCES

 **ROYAL**  
DEVELOPMENT HOLDING  
AN ESG COMPANY

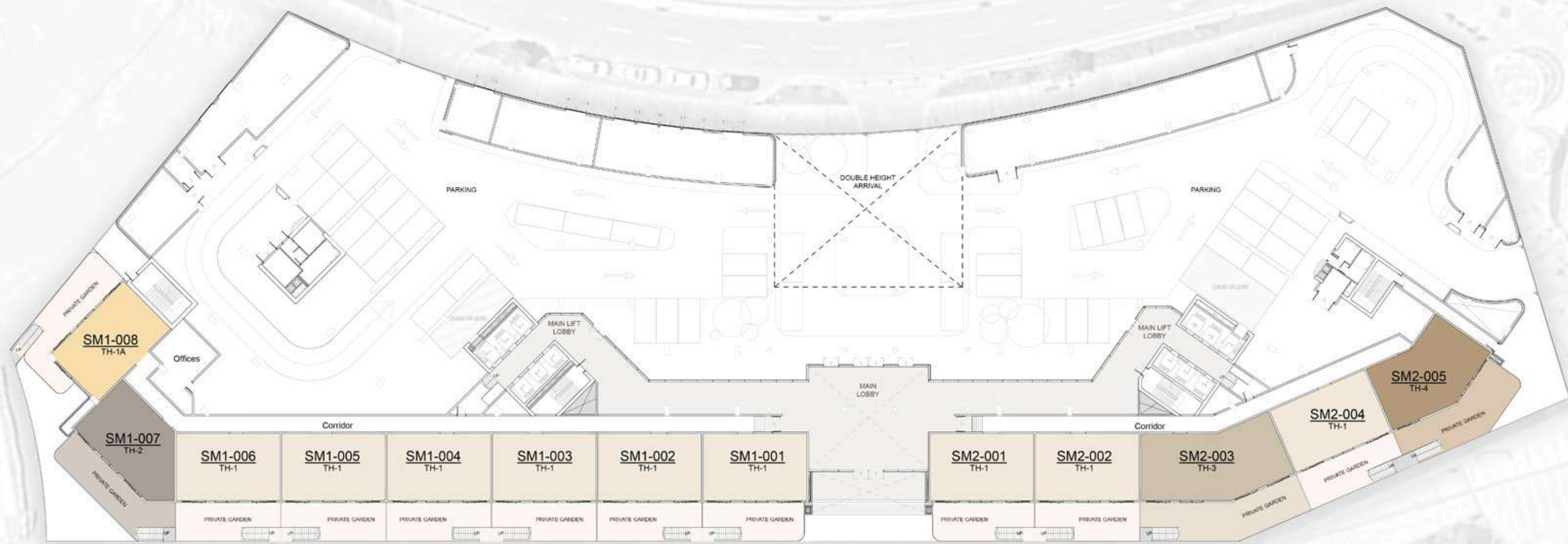
ساس  
SAAS







# GROUND FLOOR PLAN



## DESCRIPTION

- TH - TYPE 1
- TH - TYPE 1A
- TH - TYPE 2
- TH - TYPE 3
- TH - TYPE 4

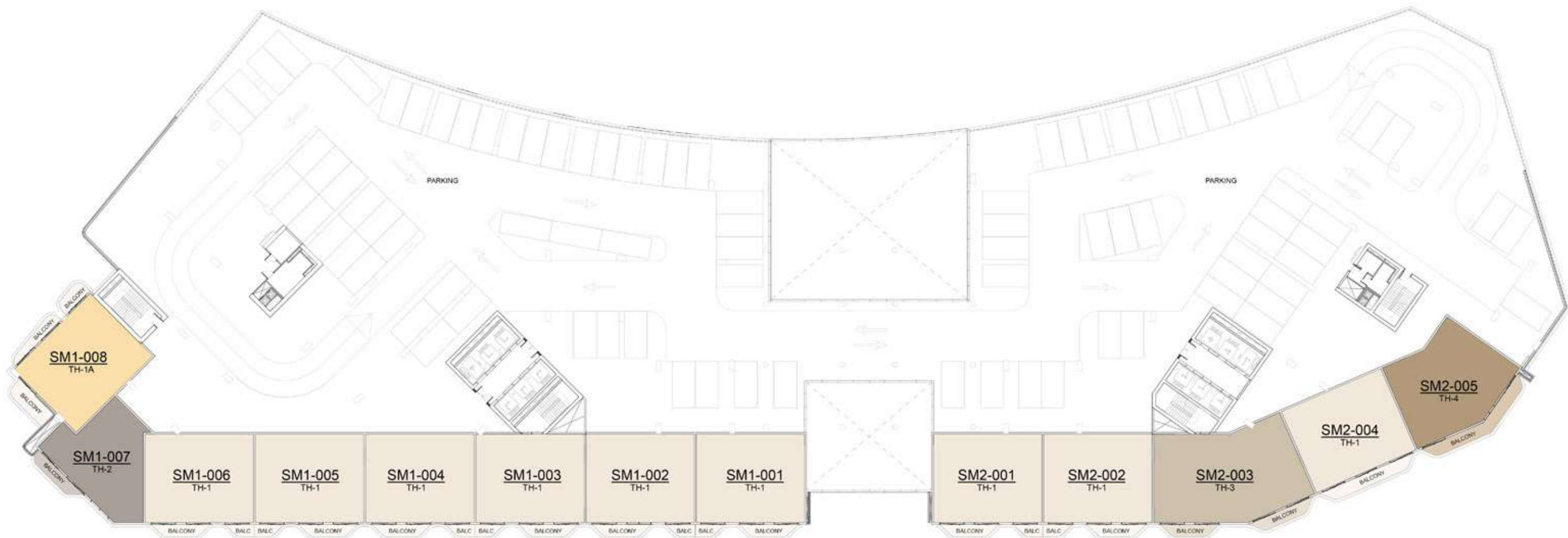
PROMENADE



Floor layouts must only be referred for locating the unit type on a floor. Balcony profiles may differ slightly during subsequent design development stages.

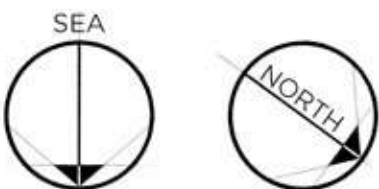
TH: Duplex Townhouse PH: Duplex Penthouse 1BR: One Bedroom 2BR: Two Bedroom 3BR: Three Bedroom

# 1ST PODIUM FLOOR PLAN



## DESCRIPTION

- TH - TYPE 1
- TH - TYPE 1A
- TH - TYPE 2
- TH - TYPE 3
- TH - TYPE 4

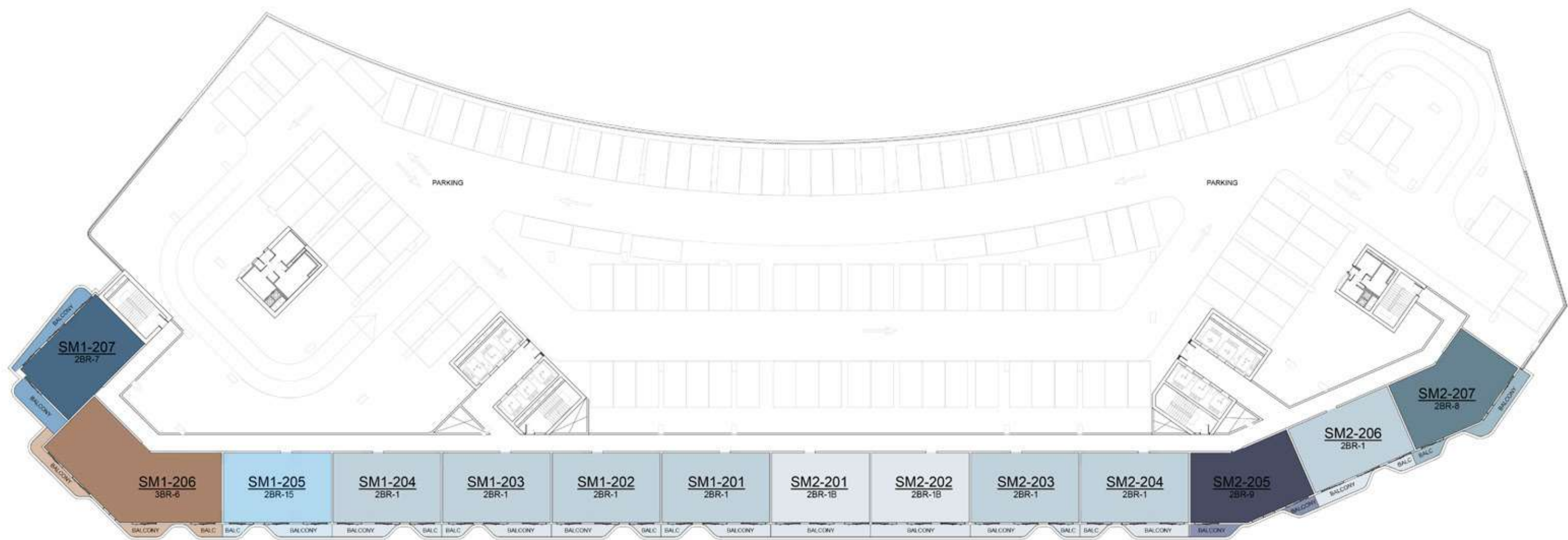


Floor layouts must only be referred for locating the unit type on a floor. Balcony profiles may differ slightly during subsequent design development stages.

TH: Duplex Townhouse PH: Duplex Penthouse 1BR: One Bedroom 2BR: Two Bedroom 3BR: Three Bedroom

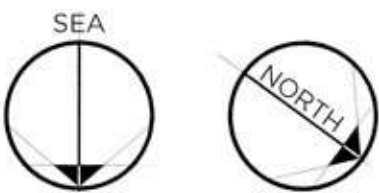


# 2ND PODIUM FLOOR PLAN



## DESCRIPTION

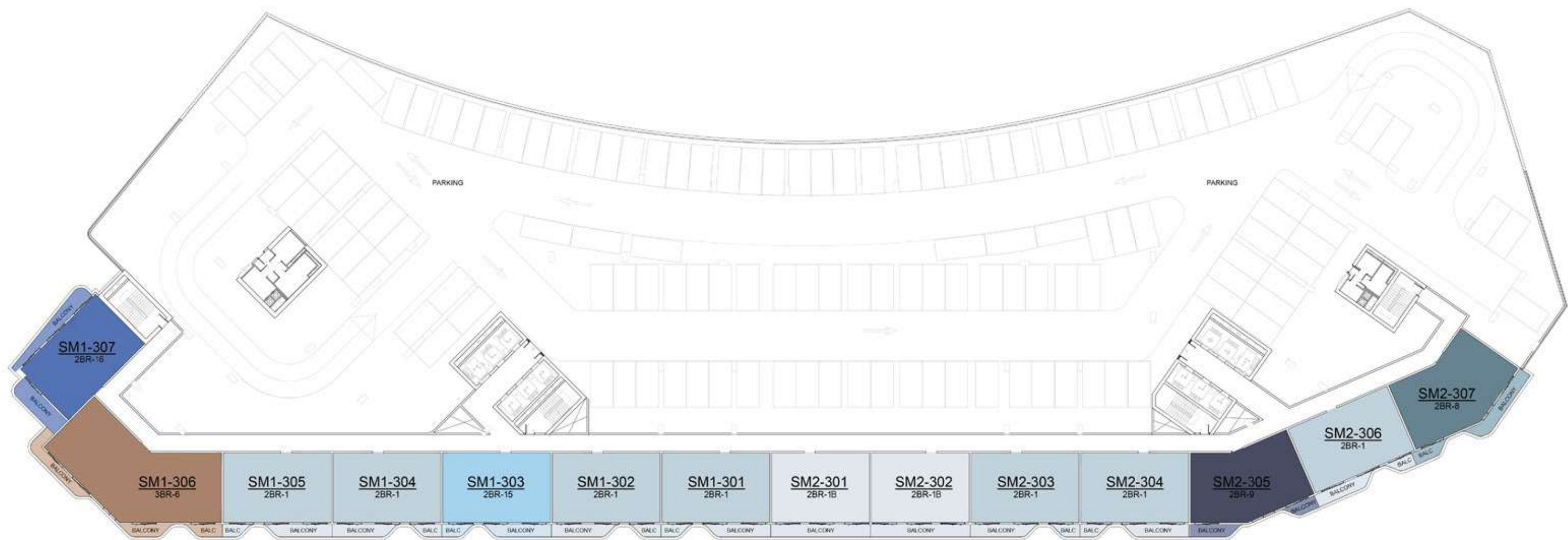
	2BR - TYPE 1		3BR - TYPE 6
	2BR - TYPE 1B		
	2BR - TYPE 7		
	2BR - TYPE 8		
	2BR - TYPE 9		
	2BR - TYPE 15		



Floor layouts must only be referred for locating the unit type on a floor. Balcony profiles may differ slightly during subsequent design development stages.

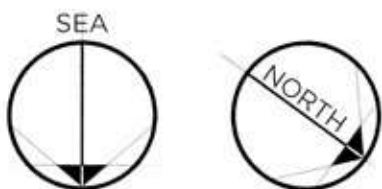
TH: Duplex Townhouse PH: Duplex Penthouse 1BR: One Bedroom 2BR: Two Bedroom 3BR: Three Bedroom

# 3RD PODIUM FLOOR PLAN



## DESCRIPTION

2BR - TYPE 1	3BR - TYPE 6
2BR - TYPE 1B	
2BR - TYPE 8	
2BR - TYPE 9	
2BR - TYPE 15	
2BR - TYPE 16	

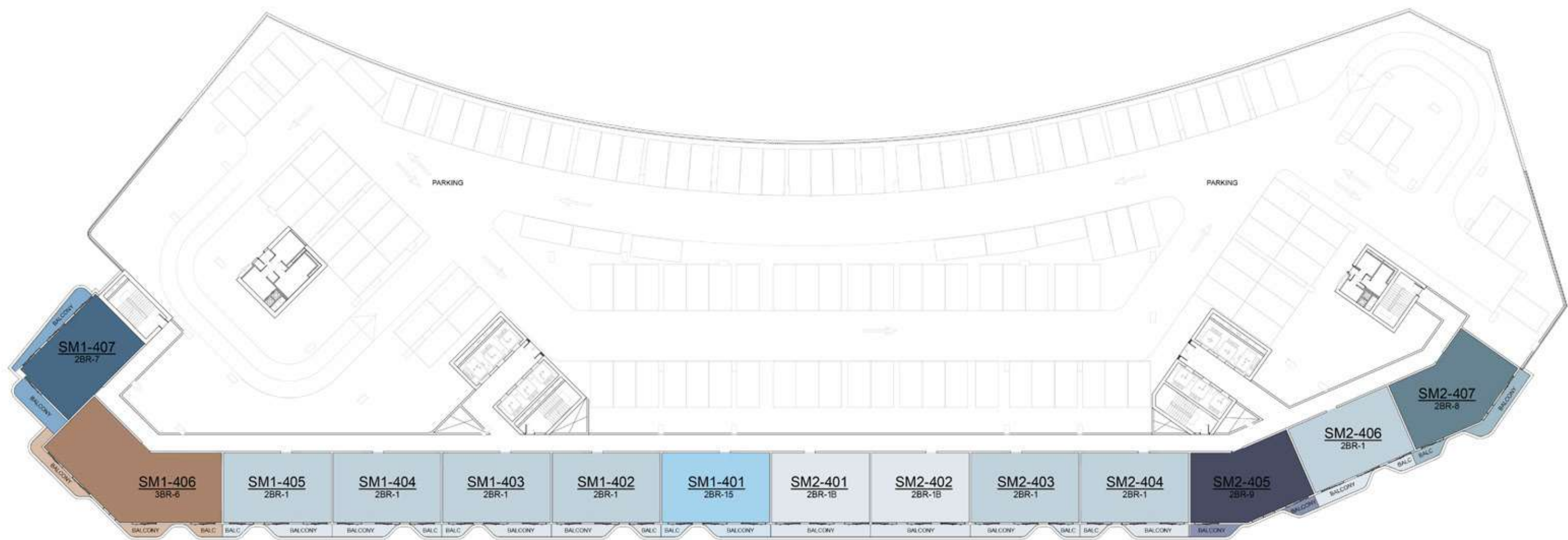


Floor layouts must only be referred for locating the unit type on a floor. Balcony profiles may differ slightly during subsequent design development stages.

TH: Duplex Townhouse PH: Duplex Penthouse 1BR: One Bedroom 2BR: Two Bedroom 3BR: Three Bedroom

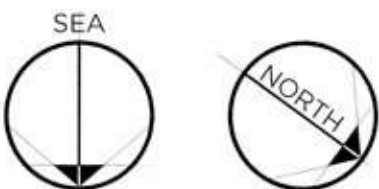


# 4TH PODIUM FLOOR PLAN



## DESCRIPTION

2BR - TYPE 1	3BR - TYPE 6
2BR - TYPE 1B	
2BR - TYPE 7	
2BR - TYPE 8	
2BR - TYPE 9	
2BR - TYPE 15	



Floor layouts must only be referred for locating the unit type on a floor. Balcony profiles may differ slightly during subsequent design development stages.

TH: Duplex Townhouse PH: Duplex Penthouse 1BR: One Bedroom 2BR: Two Bedroom 3BR: Three Bedroom

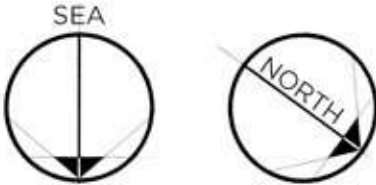


# 5TH FLOOR PLAN



## DESCRIPTION

1BR - TYPE 1	2BR - TYPE 1	2BR - TYPE 15	3BR - TYPE 2
1BR - TYPE 2	2BR - TYPE 7	2BR - TYPE 16	3BR - TYPE 3
1BR - TYPE 4	2BR - TYPE 10		

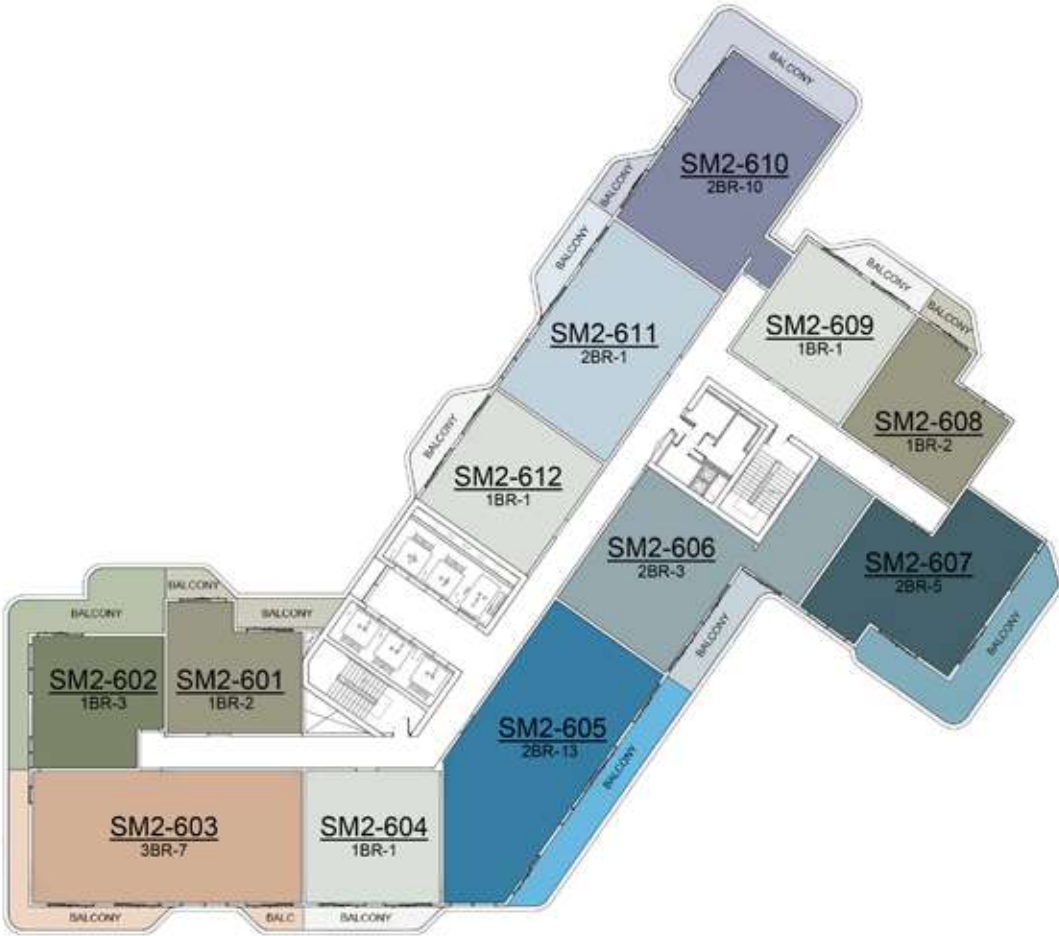


Floor layouts must only be referred for locating the unit type on a floor. Balcony profiles may differ slightly during subsequent design development stages.

TH: Duplex Townhouse PH: Duplex Penthouse 1BR: One Bedroom 2BR: Two Bedroom 3BR: Three Bedroom

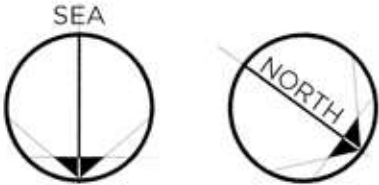


# 6TH & 10TH FLOOR PLAN



## DESCRIPTION

1BR - TYPE 1	2BR - TYPE 1	2BR - TYPE 7	2BR - TYPE 16	3BR - TYPE 7
1BR - TYPE 2	2BR - TYPE 3	2BR - TYPE 10		
1BR - TYPE 3	2BR - TYPE 4	2BR - TYPE 12		
1BR - TYPE 4	2BR - TYPE 5	2BR - TYPE 13		
	2BR - TYPE 6	2BR - TYPE 15		

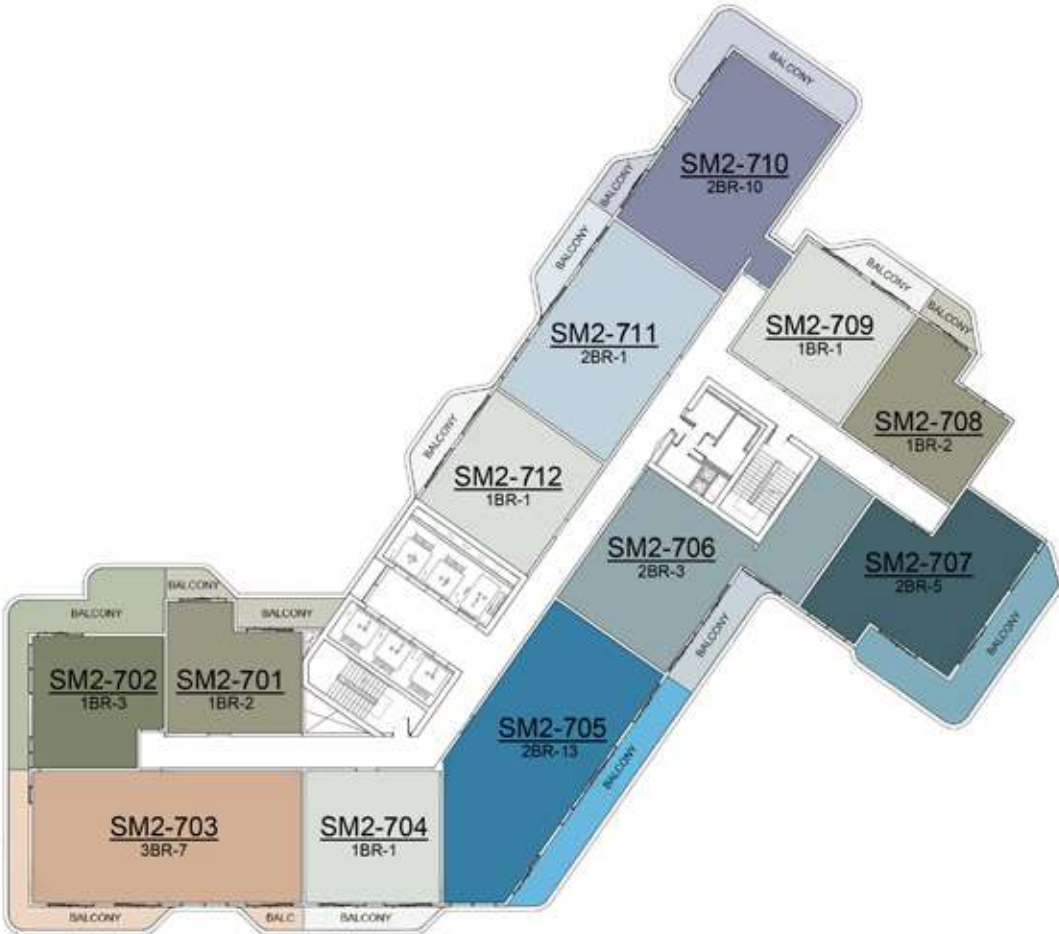


Floor layouts must only be referred for locating the unit type on a floor. Balcony profiles may differ slightly during subsequent design development stages.

TH: Duplex Townhouse PH: Duplex Penthouse 1BR: One Bedroom 2BR: Two Bedroom 3BR: Three Bedroom

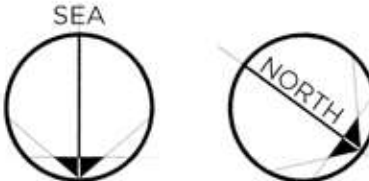


# 7TH FLOOR PLAN



## DESCRIPTION

1BR - TYPE 1	2BR - TYPE 1	2BR - TYPE 7	2BR - TYPE 16	3BR - TYPE 7
1BR - TYPE 2	2BR - TYPE 3	2BR - TYPE 10		
1BR - TYPE 3	2BR - TYPE 4	2BR - TYPE 12		
1BR - TYPE 4	2BR - TYPE 5	2BR - TYPE 13		
	2BR - TYPE 6	2BR - TYPE 15		

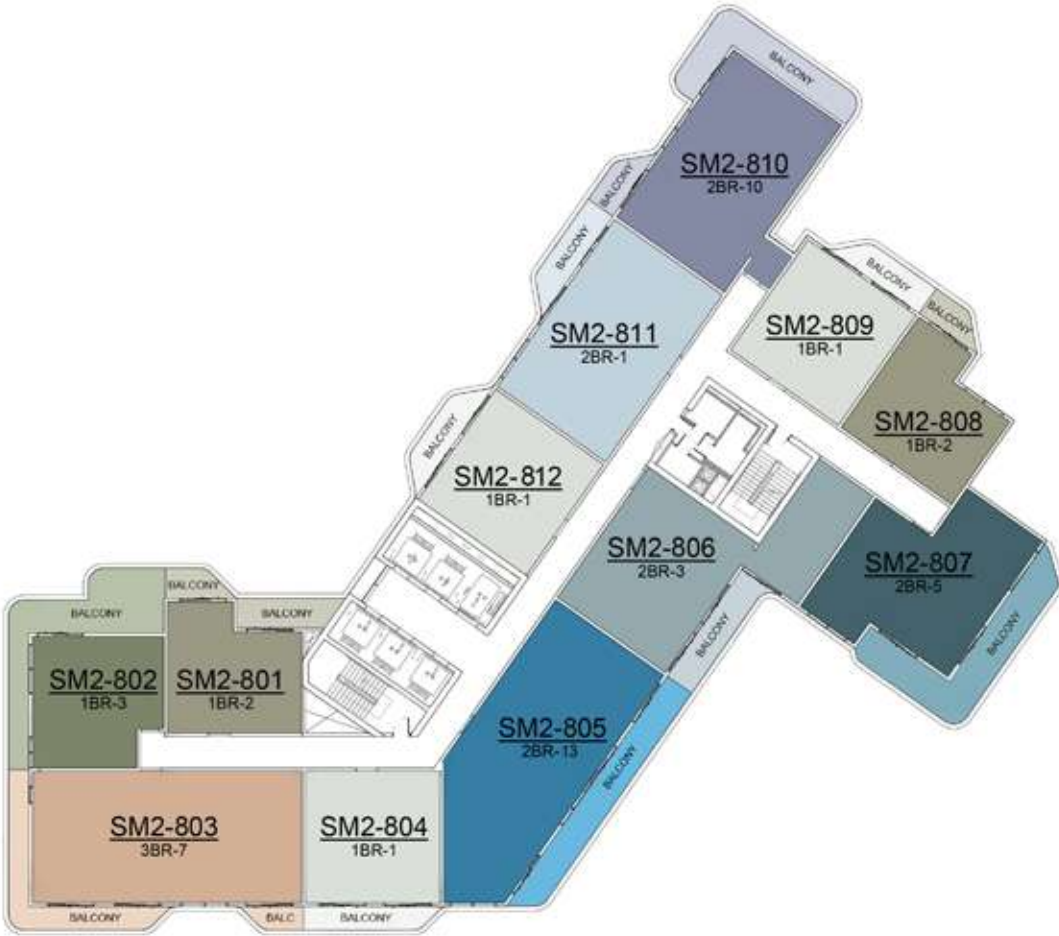


Floor layouts must only be referred for locating the unit type on a floor. Balcony profiles may differ slightly during subsequent design development stages.

TH: Duplex Townhouse PH: Duplex Penthouse 1BR: One Bedroom 2BR: Two Bedroom 3BR: Three Bedroom

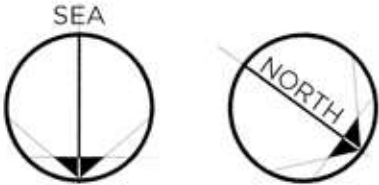


# 8TH & 9TH FLOOR PLAN



## DESCRIPTION

1BR - TYPE 1	2BR - TYPE 1	2BR - TYPE 7	2BR - TYPE 15	3BR - TYPE 7
1BR - TYPE 2	2BR - TYPE 3	2BR - TYPE 10	2BR - TYPE 16	3BR - TYPE 8
1BR - TYPE 3	2BR - TYPE 4	2BR - TYPE 12		
1BR - TYPE 4	2BR - TYPE 5	2BR - TYPE 13		
1BR - TYPE 5	2BR - TYPE 6	2BR - TYPE 14		



Floor layouts must only be referred for locating the unit type on a floor. Balcony profiles may differ slightly during subsequent design development stages.

TH: Duplex Townhouse PH: Duplex Penthouse 1BR: One Bedroom 2BR: Two Bedroom 3BR: Three Bedroom

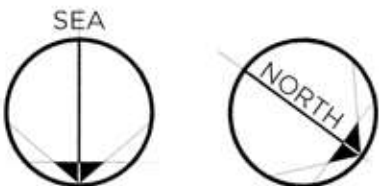


# 11TH & 12TH FLOOR PLAN



## DESCRIPTION

1BR - TYPE 1	2BR - TYPE 1	2BR - TYPE 7	3BR - TYPE 4
1BR - TYPE 2	2BR - TYPE 1A	2BR - TYPE 10	3BR - TYPE 5
	2BR - TYPE 2	2BR - TYPE 13	3BR - TYPE 7
	2BR - TYPE 3	2BR - TYPE 15	
	2BR - TYPE 4	2BR - TYPE 16	

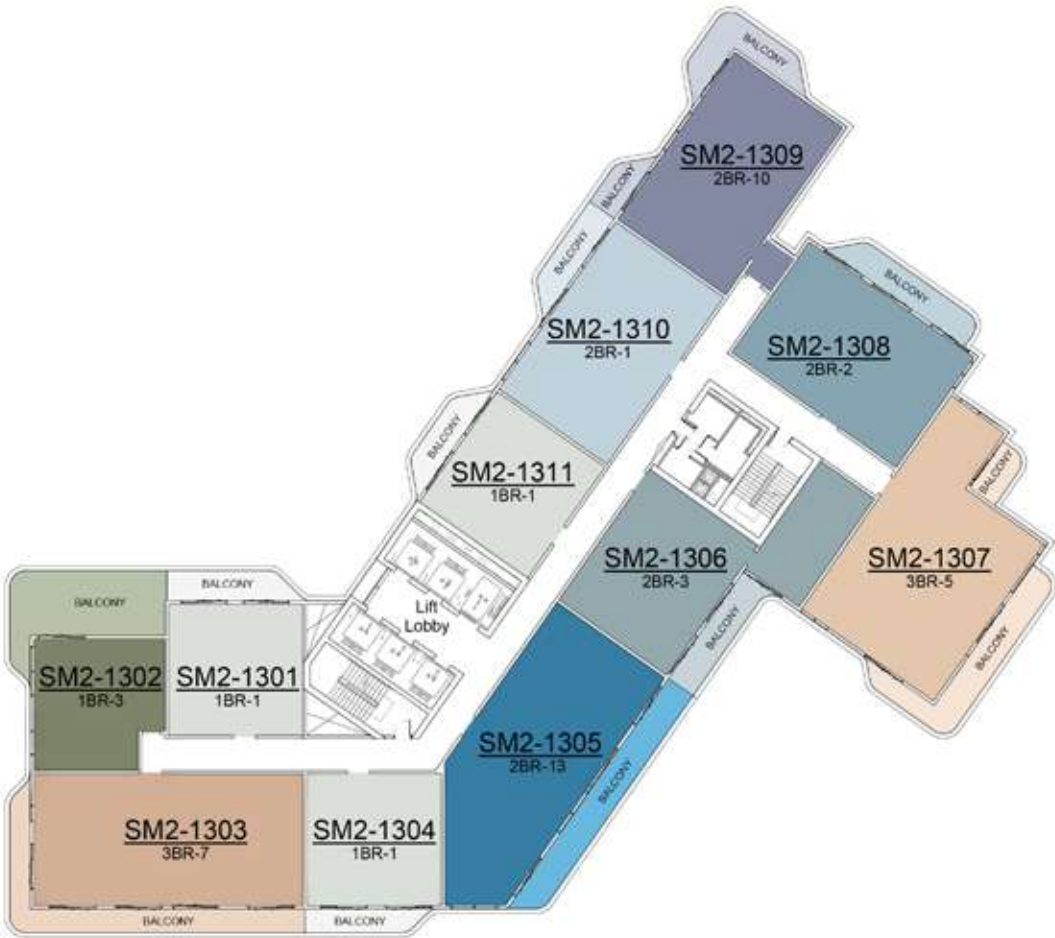


Floor layouts must only be referred for locating the unit type on a floor. Balcony profiles may differ slightly during subsequent design development stages.

TH: Duplex Townhouse PH: Duplex Penthouse 1BR: One Bedroom 2BR: Two Bedroom 3BR: Three Bedroom

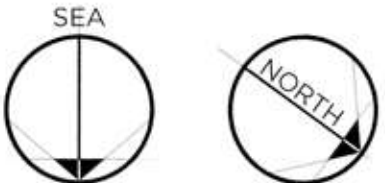


# 13TH TO 20TH FLOOR PLAN



## DESCRIPTION

1BR - TYPE 1	2BR - TYPE 1	2BR - TYPE 10	2BR - TYPE 16	3BR - TYPE 5
1BR - TYPE 3	2BR - TYPE 2	2BR - TYPE 11		3BR - TYPE 7
	2BR - TYPE 3	2BR - TYPE 12		
	2BR - TYPE 4	2BR - TYPE 13		
	2BR - TYPE 7	2BR - TYPE 15		

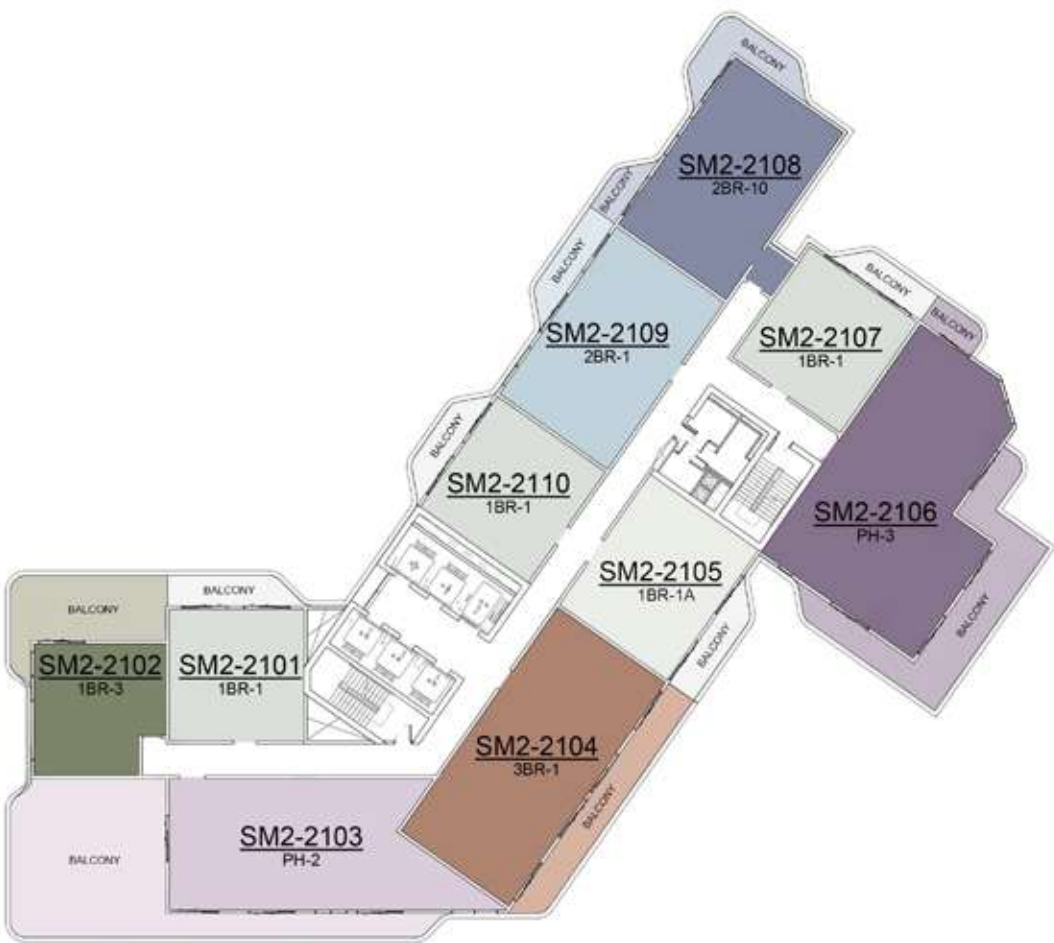


Floor layouts must only be referred for locating the unit type on a floor. Balcony profiles may differ slightly during subsequent design development stages.

TH: Duplex Townhouse PH: Duplex Penthouse 1BR: One Bedroom 2BR: Two Bedroom 3BR: Three Bedroom



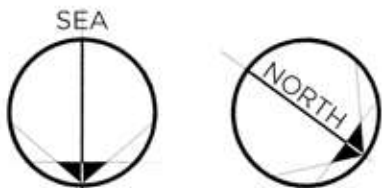
# 21ST & 22ND FLOOR PLAN



## DESCRIPTION

1BR - TYPE 1	2BR - TYPE 1	2BR - TYPE 15	3BR - TYPE 1
1BR - TYPE 1A	2BR - TYPE 4		3BR - TYPE 9
1BR - TYPE 3	2BR - TYPE 10		
	2BR - TYPE 11		

PH - TYPE 1
PH - TYPE 2
PH - TYPE 3



Floor layouts must only be referred for locating the unit type on a floor. Balcony profiles may differ slightly during subsequent design development stages.

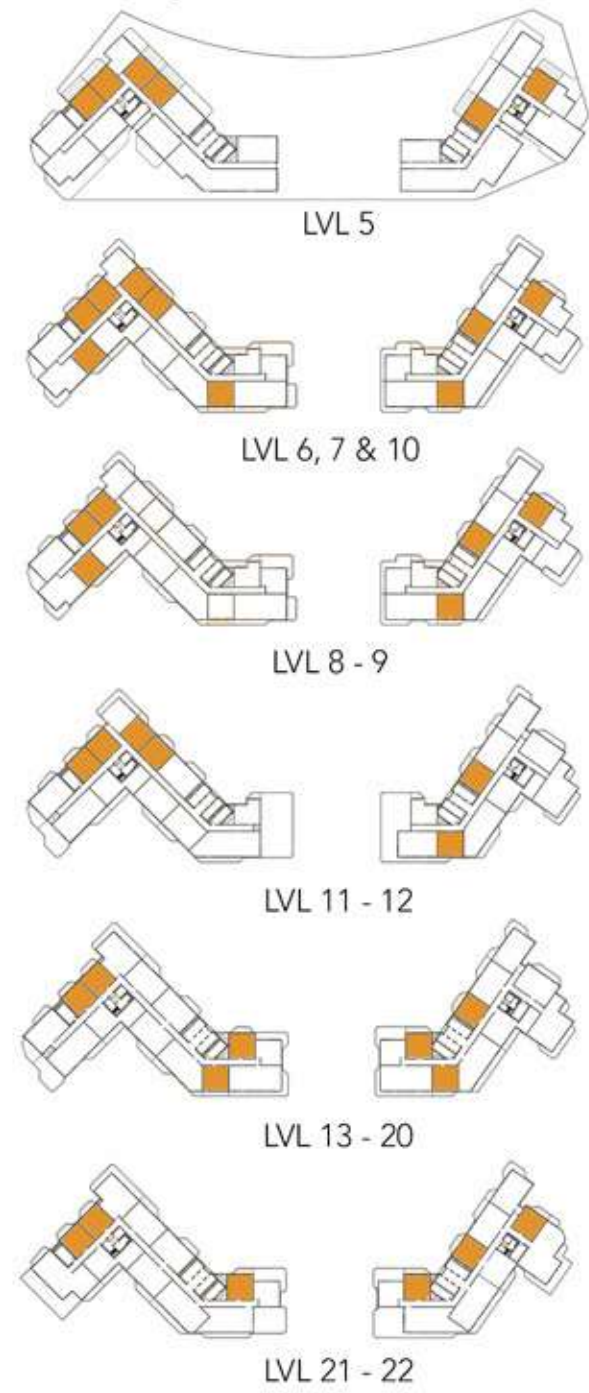
TH: Duplex Townhouse PH: Duplex Penthouse 1BR: One Bedroom 2BR: Two Bedroom 3BR: Three Bedroom



# ONE BEDROOM ( TYPE - 1 )

No. of BR	1
Total Area	808 Sq.ft *

(\*) Starting from



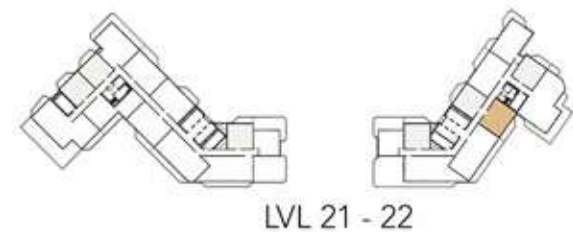
Disclaimer: Dimensions, apartment areas & layouts are indicative and may differ slightly during subsequent design development stages. Furniture shown is for illustration purpose only.



# ONE BEDROOM ( TYPE - 1A )

No. of BR	1
Total Area	1,038 Sq.ft

(\*) Starting from

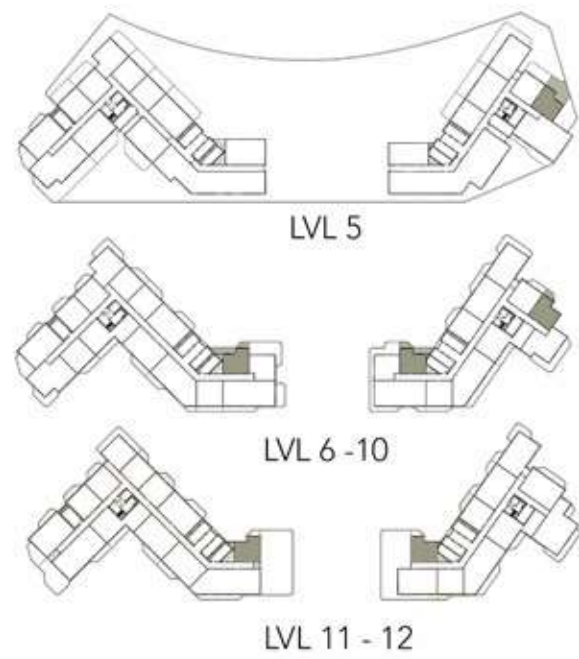


Disclaimer: Dimensions, apartment areas & layouts are indicative and may differ slightly during subsequent design development stages. Furniture shown is for illustration purpose only.

# ONE BEDROOM ( TYPE - 2 )

No. of BR	1
Total Area	731 Sq.ft *

(\*) Starting from



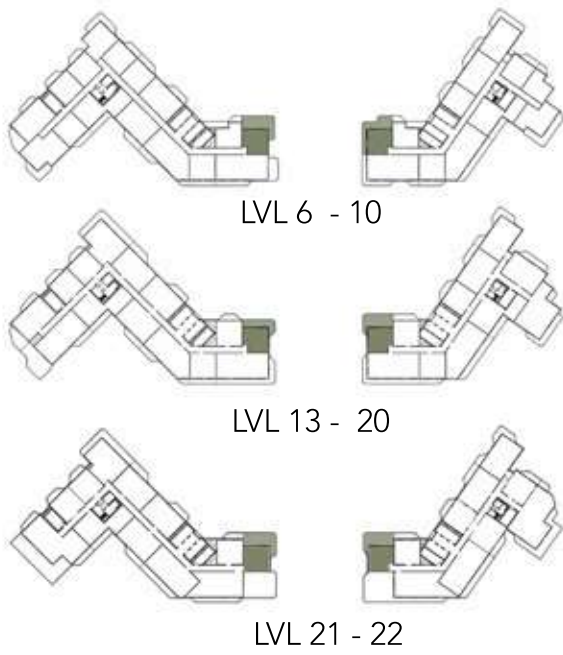
Disclaimer: Dimensions, apartment areas & layouts are indicative and may differ slightly during subsequent design development stages. Furniture shown is for illustration purpose only.



# ONE BEDROOM ( TYPE - 3 )

No. of BR	1
Total Area	1,020 Sq.ft *

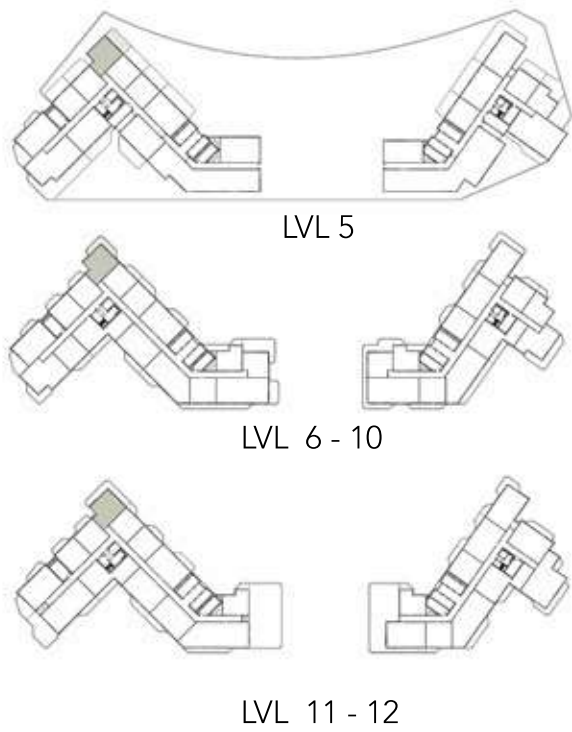
(\*) Starting from



# ONE BEDROOM ( TYPE - 4 )

No. of BR	1
Total Area	1,157 Sq.ft *

(\*) Starting from

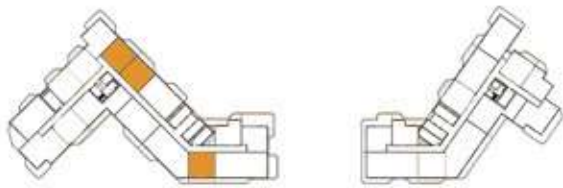




# ONE BEDROOM ( TYPE - 5 )

No. of BR	1
Total Area	808 Sq.ft *

(\*) Starting from



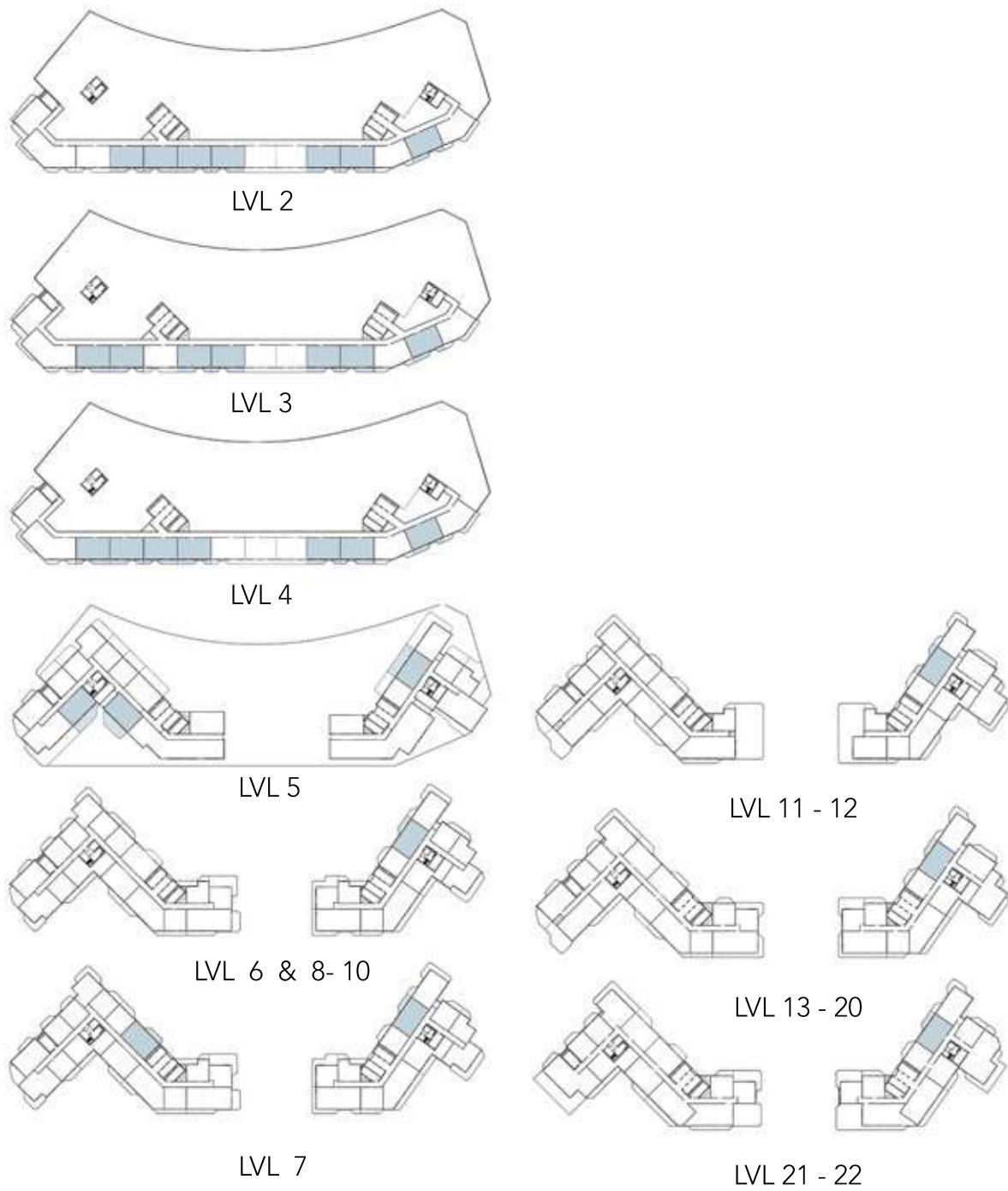
LVL 8 - 9

Disclaimer: Dimensions, apartment areas & layouts are indicative and may differ slightly during subsequent design development stages. Furniture shown is for illustration purpose only.

# TWO BEDROOM ( TYPE - 1 )

No. of BR	2
Total Area	1,273 Sq.ft *

(\*) Starting from



Disclaimer: Dimensions, apartment areas & layouts are indicative and may differ slightly during subsequent design development stages. Furniture shown is for illustration purpose only.



# TWO BEDROOM ( TYPE - 1A )

No. of BR	2
Total Area	3,311 Sq.ft *

(\*) Starting from



LVL 11-12

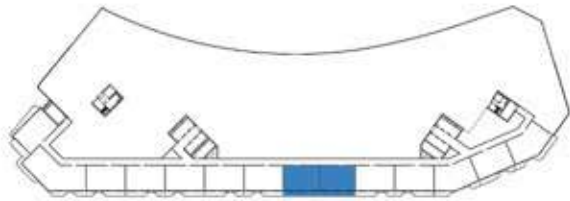


Disclaimer: Dimensions, apartment areas & layouts are indicative and may differ slightly during subsequent design development stages. Furniture shown is for illustration purpose only.

# TWO BEDROOM ( TYPE - 1B )

No. of BR	2
Total Area	1,237 Sq.ft *

(\*) Starting from



LVL 2 - 4



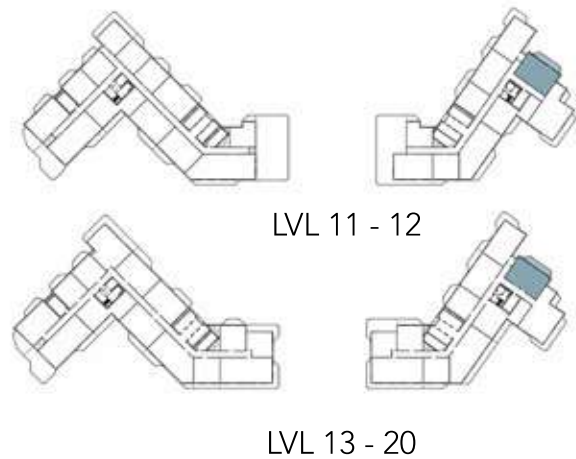
Disclaimer: Dimensions, apartment areas & layouts are indicative and may differ slightly during subsequent design development stages. Furniture shown is for illustration purpose only.



# TWO BEDROOM ( TYPE - 2 )

No. of BR	2
Total Area	1,284 Sq.ft *

(\*) Starting from

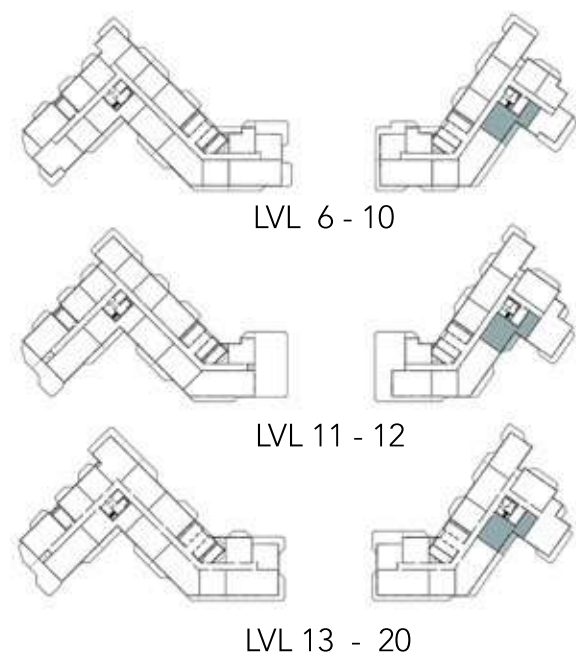


Disclaimer: Dimensions, apartment areas & layouts are indicative and may differ slightly during subsequent design development stages. Furniture shown is for illustration purpose only.

# TWO BEDROOM ( TYPE - 3 )

No. of BR	2
Total Area	1,326 Sq.ft *

(\*) Starting from



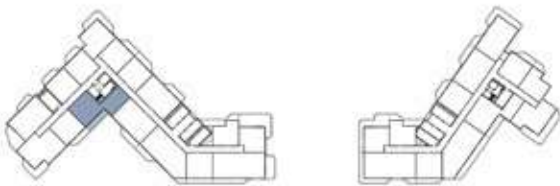
Disclaimer: Dimensions, apartment areas & layouts are indicative and may differ slightly during subsequent design development stages. Furniture shown is for illustration purpose only.



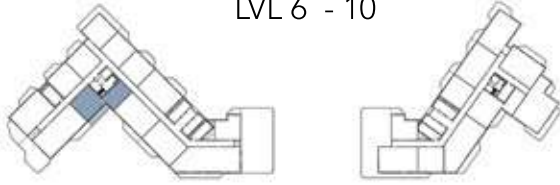
# TWO BEDROOM ( TYPE - 4 )

No. of BR	2
Total Area	1,428 Sq.ft *

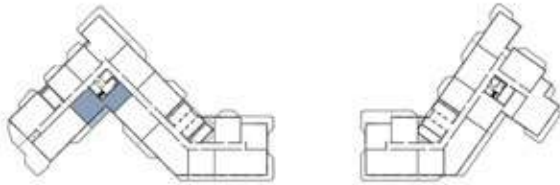
(\*) Starting from



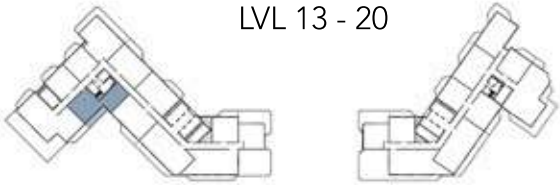
LVL 6 - 10



LVL 11 - 12



LVL 13 - 20



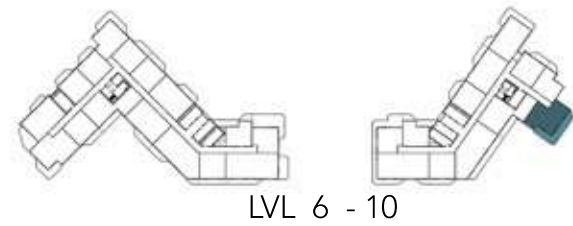
LVL 21 - 22

Disclaimer: Dimensions, apartment areas & layouts are indicative and may differ slightly during subsequent design development stages. Furniture shown is for illustration purpose only.

# TWO BEDROOM ( TYPE - 5 )

No. of BR	2
Total Area	1,488 Sq.ft *

(\*) Starting from



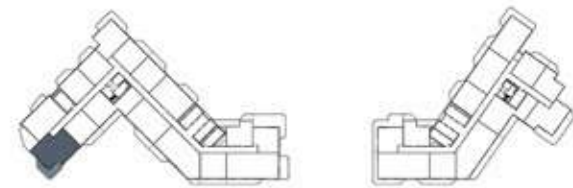
Disclaimer: Dimensions, apartment areas & layouts are indicative and may differ slightly during subsequent design development stages. Furniture shown is for illustration purpose only.



# TWO BEDROOM ( TYPE - 6 )

No. of BR	2
Total Area	1,499 Sq.ft *

(\*) Starting from



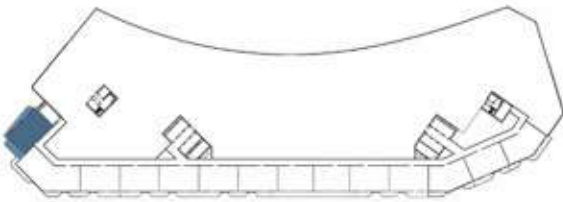
LVL 6 - 10

Disclaimer: Dimensions, apartment areas & layouts are indicative and may differ slightly during subsequent design development stages. Furniture shown is for illustration purpose only.

# TWO BEDROOM ( TYPE - 1 )

No. of BR	2
Total Area	1,354 Sq.ft *

(\*) Starting from



LVL 2 & 4

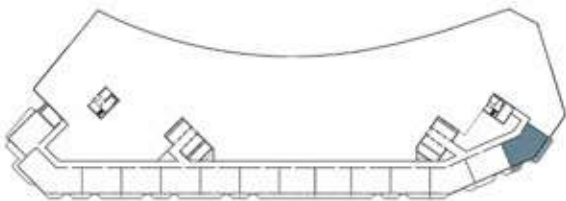
Disclaimer: Dimensions, apartment areas & layouts are indicative and may differ slightly during subsequent design development stages. Furniture shown is for illustration purpose only.



# TWO BEDROOM ( TYPE - 8 )

No. of BR	2
Total Area	1,450 Sq.ft*

(\*) Starting from



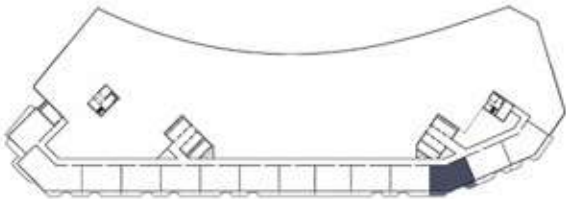
LVL 2 - 4

Disclaimer: Dimensions, apartment areas & layouts are indicative and may differ slightly during subsequent design development stages. Furniture shown is for illustration purpose only.

# TWO BEDROOM ( TYPE - 9 )

No. of BR	2
Total Area	1,366 Sq.ft *

(\*) Starting from



LVL 2 - 4

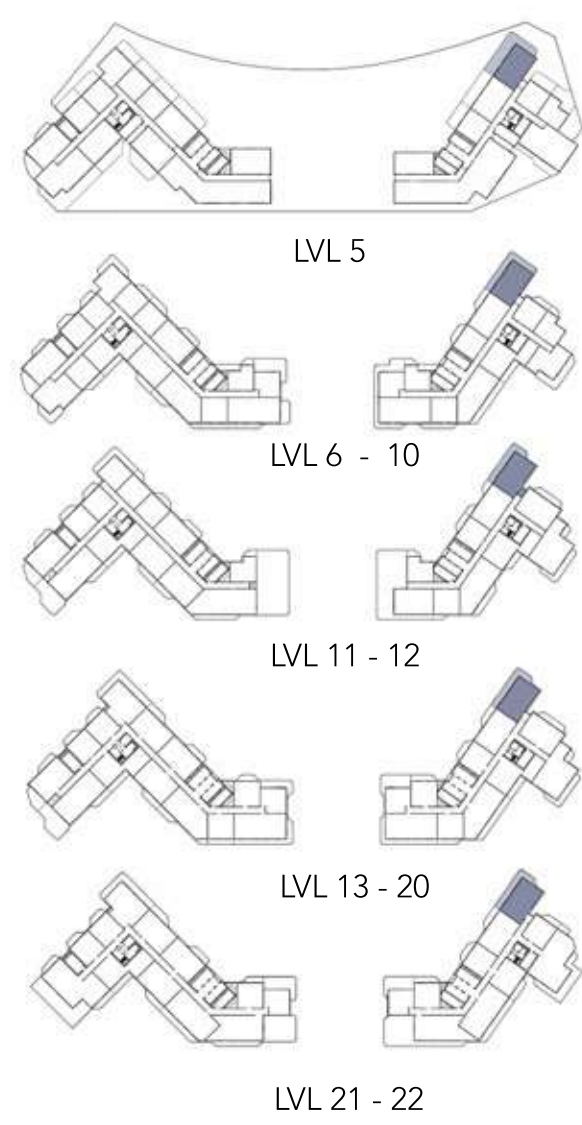
Disclaimer: Dimensions, apartment areas & layouts are indicative and may differ slightly during subsequent design development stages. Furniture shown is for illustration purpose only.



# TWO BEDROOM ( TYPE - 10 )

No. of BR	2
Total Area	1,476 Sq.ft *

(\*) Starting from

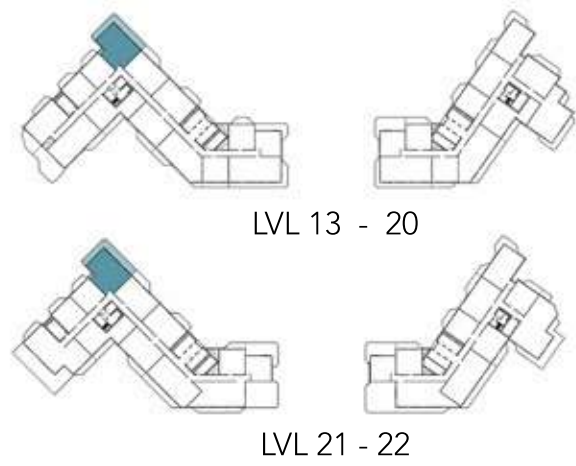


Disclaimer: Dimensions, apartment areas & layouts are indicative and may differ slightly during subsequent design development stages. Furniture shown is for illustration purpose only.

# TWO BEDROOM ( TYPE - 11 )

No. of BR	2
Total Area	1,644 Sq.ft *

(\*) Starting from



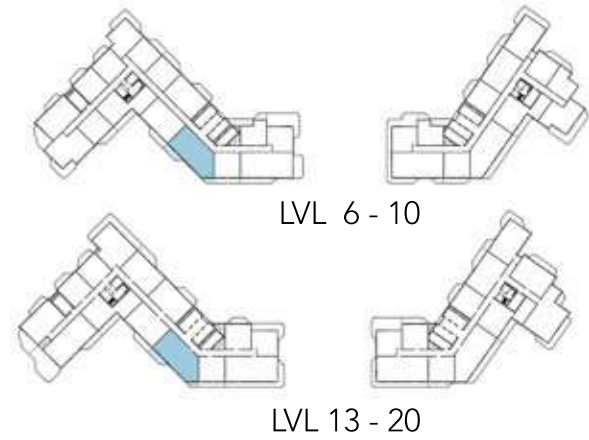
Disclaimer: Dimensions, apartment areas & layouts are indicative and may differ slightly during subsequent design development stages. Furniture shown is for illustration purpose only.



# TWO BEDROOM ( TYPE - 12 )

No. of BR	2
Total Area	1,666 Sq.ft *

(\*) Starting from

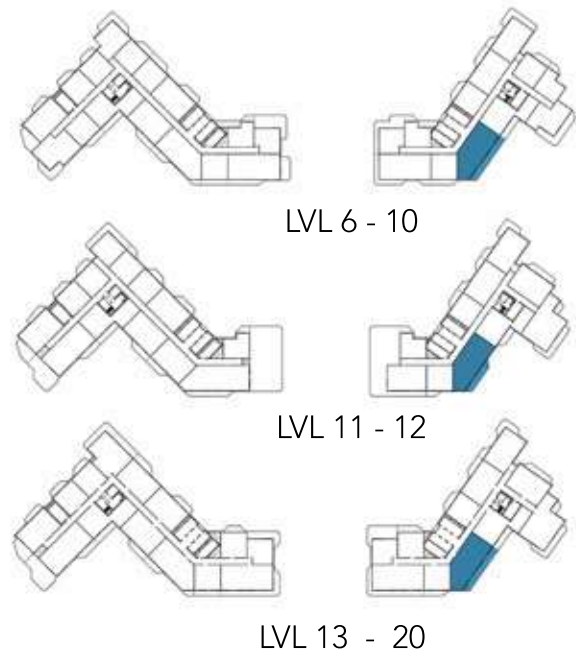


Disclaimer: Dimensions, apartment areas & layouts are indicative and may differ slightly during subsequent design development stages. Furniture shown is for illustration purpose only.

# TWO BEDROOM ( TYPE - 13 )

No. of BR	2
Total Area	1,735 Sq.ft *

(\*) Starting from



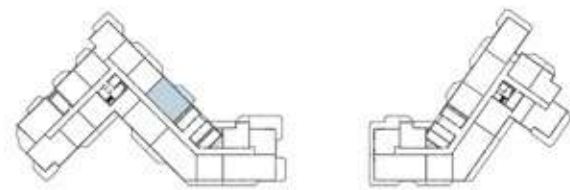
Disclaimer: Dimensions, apartment areas & layouts are indicative and may differ slightly during subsequent design development stages. Furniture shown is for illustration purpose only.



# TWO BEDROOM ( TYPE 14 )

No. of BR	2
Total Area	1,273 Sq.ft *

(\*) Starting from



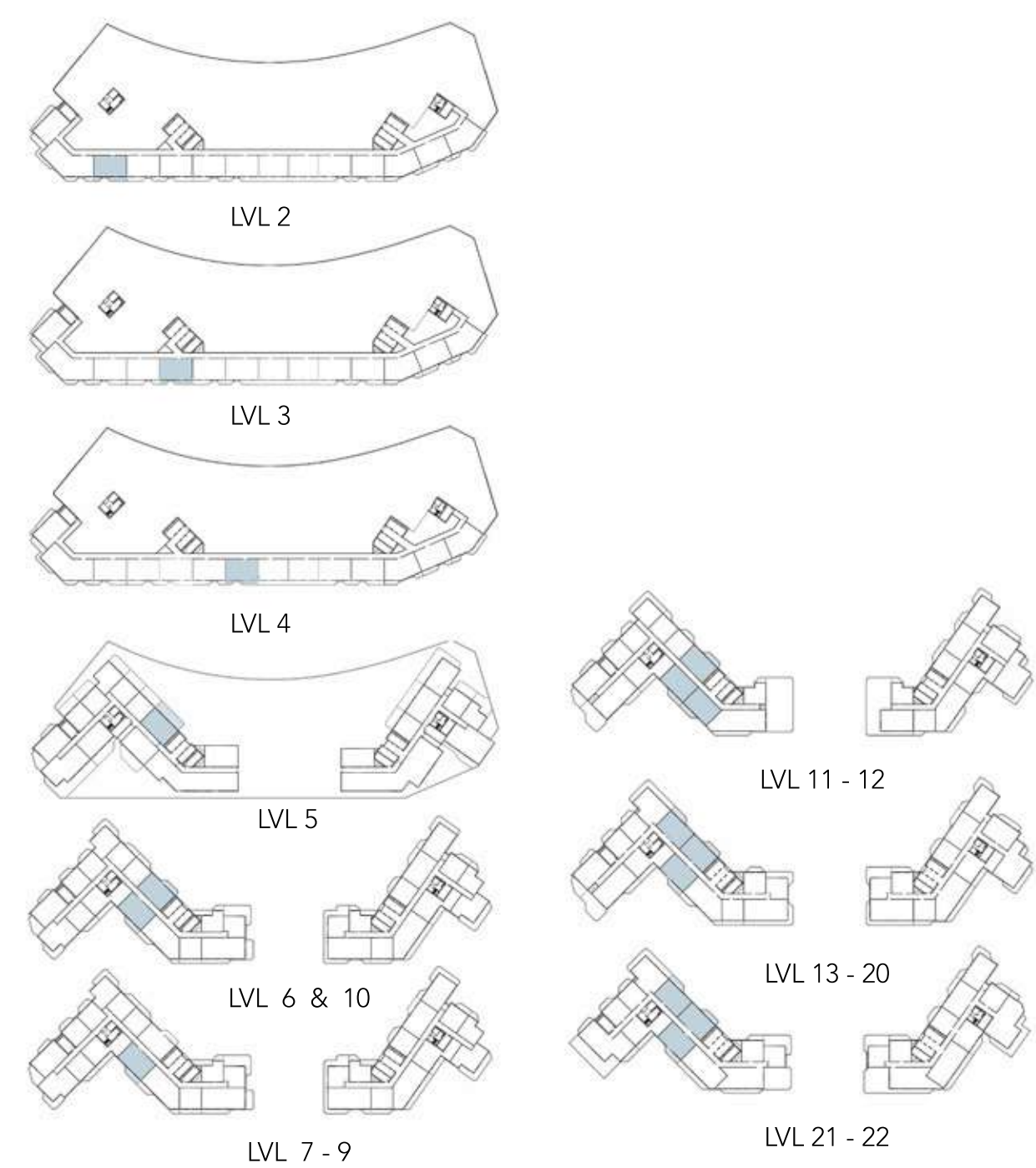
LVL 8 - 9

Disclaimer: Dimensions, apartment areas & layouts are indicative and may differ slightly during subsequent design development stages. Furniture shown is for illustration purpose only.

# TWO BEDROOM ( TYPE - 15 )

No. of BR	2
Total Area	1,273 Sq.ft *

(\*) Starting from



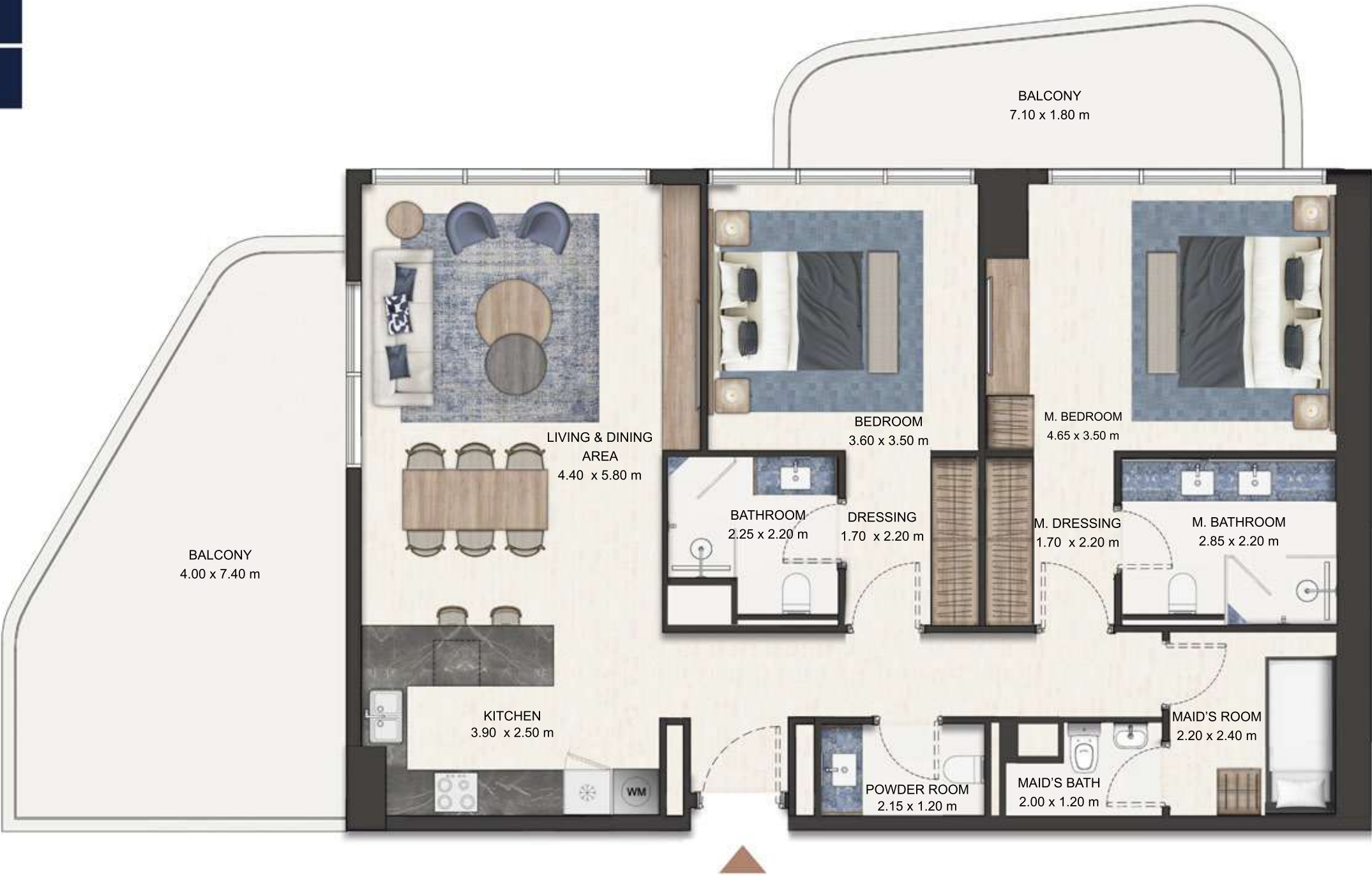
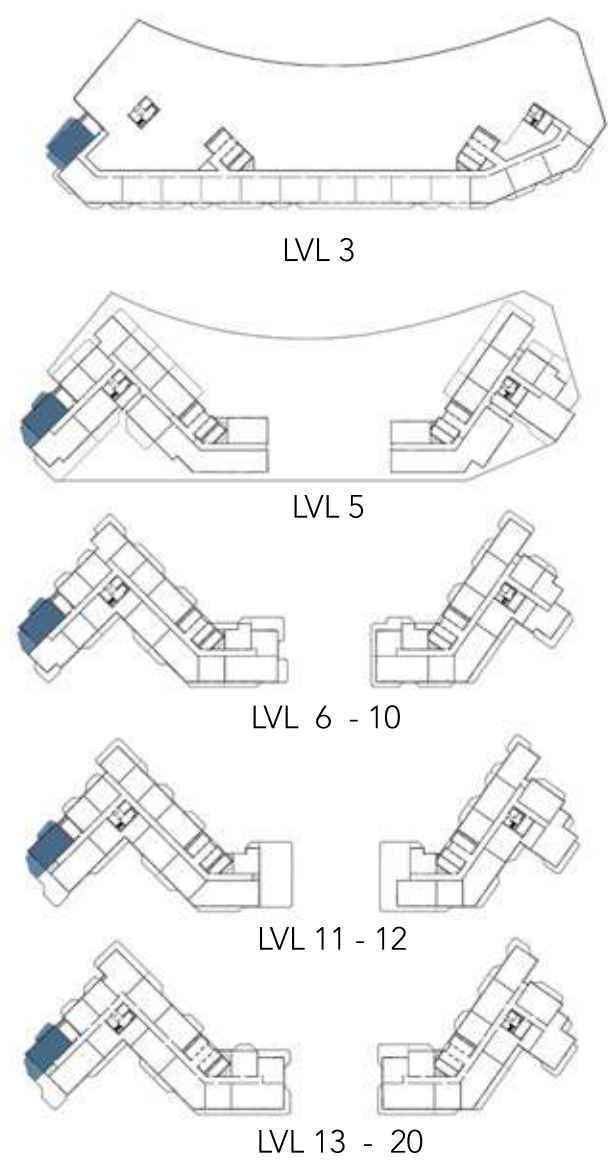
Disclaimer: Dimensions, apartment areas & layouts are indicative and may differ slightly during subsequent design development stages. Furniture shown is for illustration purpose only.



# TWO BEDROOM ( TYPE - 16 )

No. of BR	2
Total Area	1,354 Sq.ft *

(\*) Starting from

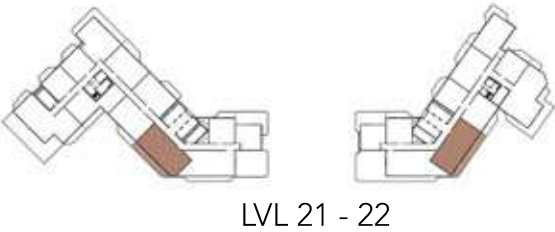


Disclaimer: Dimensions, apartment areas & layouts are indicative and may differ slightly during subsequent design development stages. Furniture shown is for illustration purpose only.

# THREE BEDROOM ( TYPE - 1 )

No. of BR	3
Total Area	1,878 Sq.ft *

(\*) Starting from



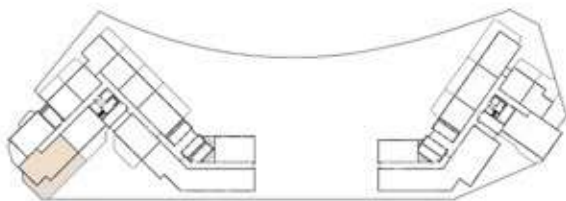
Disclaimer: Dimensions, apartment areas & layouts are indicative and may differ slightly during subsequent design development stages. Furniture shown is for illustration purpose only.



# THREE BEDROOM ( TYPE - 2 )

No. of BR	3
Total Area	2,679 Sq.ft

(\*) Starting from



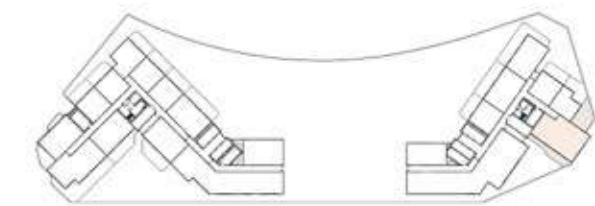
LVL 5

Disclaimer: Dimensions, apartment areas & layouts are indicative and may differ slightly during subsequent design development stages. Furniture shown is for illustration purpose only.

# THREE BEDROOM ( TYPE - 3 )

No. of BR	3
Total Area	2,664 Sq.ft

(\*) Starting from



LVL 5



Disclaimer: Dimensions, apartment areas & layouts are indicative and may differ slightly during subsequent design development stages. Furniture shown is for illustration purpose only.



# THREE BEDROOM ( TYPE - 4 )

No. of BR	3
Total Area	4,514 Sq.ft *

(\*) Starting from

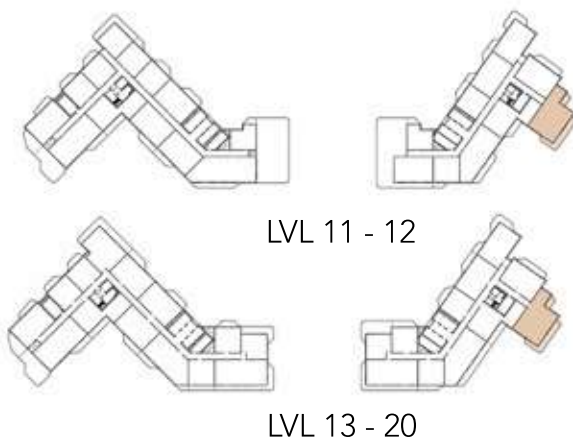


Disclaimer: Dimensions, apartment areas & layouts are indicative and may differ slightly during subsequent design development stages. Furniture shown is for illustration purpose only.

# THREE BEDROOM ( TYPE - 5 )

No. of BR	3
Total Area	1,861 Sq.ft *

(\*) Starting from



LVL 11 - 12

LVL 13 - 20

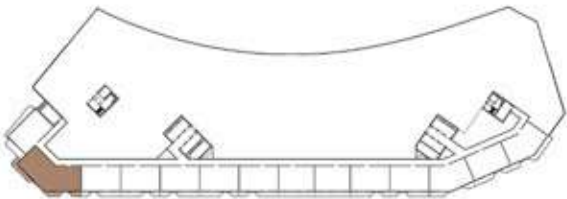
Disclaimer: Dimensions, apartment areas & layouts are indicative and may differ slightly during subsequent design development stages. Furniture shown is for illustration purpose only.



# THREE BEDROOM ( TYPE - 6 )

No. of BR	3
Total Area	2,233 Sq.ft *

(\*) Starting from



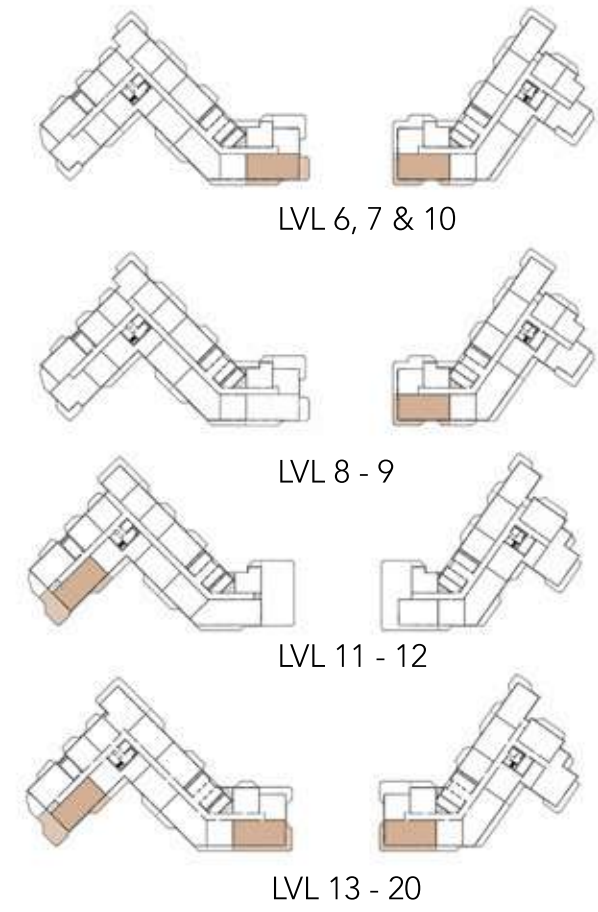
LVL 2 - 4

Disclaimer: Dimensions, apartment areas & layouts are indicative and may differ slightly during subsequent design development stages. Furniture shown is for illustration purpose only.

# THREE BEDROOM ( TYPE - 7 )

No. of BR	3
Total Area	1,740 Sq.ft *

(\*) Starting from



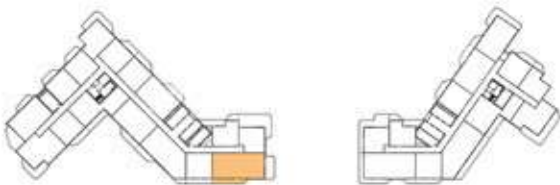
Disclaimer: Dimensions, apartment areas & layouts are indicative and may differ slightly during subsequent design development stages. Furniture shown is for illustration purpose only.



# THREE BEDROOM ( TYPE -8 )

No. of BR	3
Total Area	1,878 Sq.ft *

(\*) Starting from



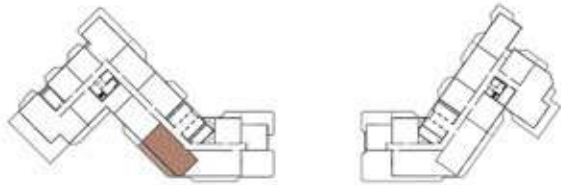
LVL 8 - 9

Disclaimer: Dimensions, apartment areas & layouts are indicative and may differ slightly during subsequent design development stages. Furniture shown is for illustration purpose only.

# THREE BEDROOM ( TYPE - 9 )

No. of BR	3
Total Area	1,878 Sq.ft *

(\*) Starting from



LVL 21 - 22

Disclaimer: Dimensions, apartment areas & layouts are indicative and may differ slightly during subsequent design development stages. Furniture shown is for illustration purpose only.



# 4-BED PENTHOUSE ( TYPE-1 )

No. of BR	4
Total Area	6,233 Sq.ft

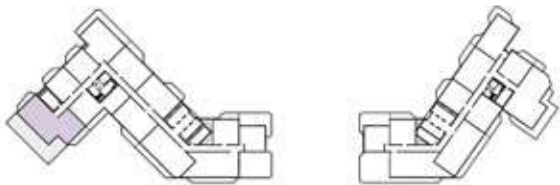
(\*) Starting from



LOWER LEVEL



UPPER LEVEL



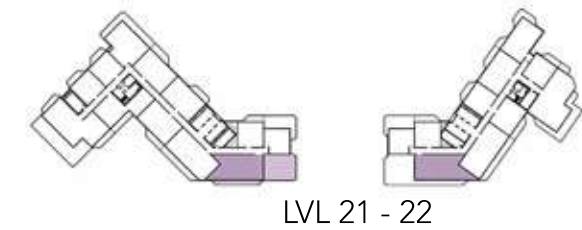
LVL 21 - 22

Disclaimer: Dimensions, apartment areas & layouts are indicative and may differ slightly during subsequent design development stages. Furniture shown is for illustration purpose only.

# 4-BED PENTHOUSE ( TYPE-2 )

No. of BR	04 - PH
Total Area	5,038 Sq.ft *

(\*) Starting from



LOWER LEVEL



UPPER LEVEL

Disclaimer: Dimensions, apartment areas & layouts are indicative and may differ slightly during subsequent design development stages. Furniture shown is for illustration purpose only.



# 4-BED PENTHOUSE ( TYPE-3 )

No. of BR

4

Total Area

4,987 Sq.ft

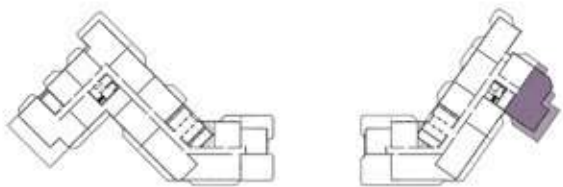
(\*) Starting from



LOWER LEVEL



FIRST LEVEL



LVL 21 - 22

Disclaimer: Dimensions, apartment areas & layouts are indicative and may differ slightly during subsequent design development stages. Furniture shown is for illustration purpose only.

# 3-BED TOWNHOUSE ( TYPE-1 )

No. of BR	3
Total Area	3,287 Sq.ft *

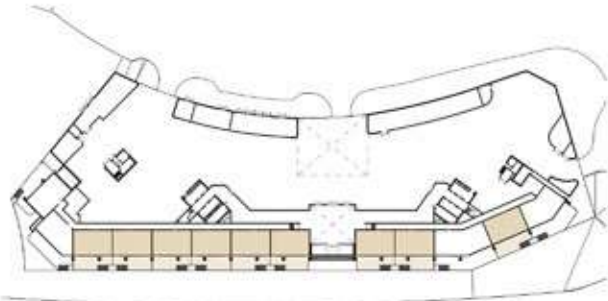
(\*) Starting from



GROUND LEVEL



FIRST LEVEL



LVL G - 1

Disclaimer: Dimensions, apartment areas & layouts are indicative and may differ slightly during subsequent design development stages. Furniture shown is for illustration purpose only.



# 3-BED TOWNHOUSE ( TYPE-1A )

No. of BR	3
Total Area	3,745 Sq.ft

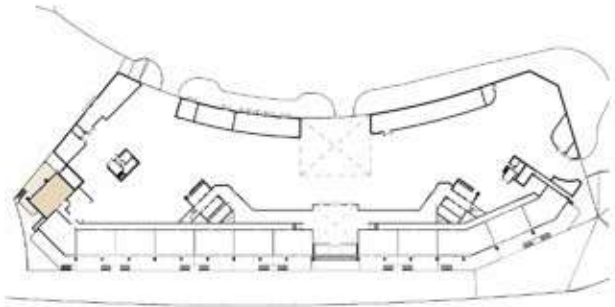
(\*) Starting from



GROUND LEVEL



FIRST LEVEL



LVL G - 1

Disclaimer: Dimensions, apartment areas & layouts are indicative and may differ slightly during subsequent design development stages. Furniture shown is for illustration purpose only.

# 3-BED TOWNHOUSE ( TYPE-2 )

No. of BR	3
Total Area	3,188 Sq.ft

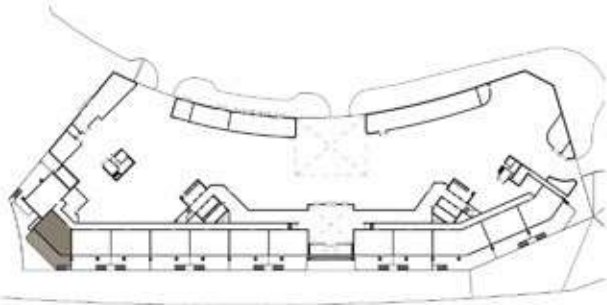
(\*) Starting from



GROUND LEVEL



FIRST LEVEL



LVL 1 - 2

Disclaimer: Dimensions, apartment areas & layouts are indicative and may differ slightly during subsequent design development stages. Furniture shown is for illustration purpose only.



# 4-BED TOWNHOUSE ( TYPE-3 )

No. of BR	4
Total Area	4,722 Sq.ft

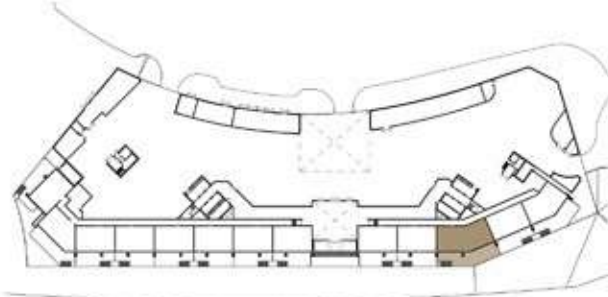
(\*) Starting from



GROUND LEVEL



FIRST LEVEL



LVL 1 - 2

# 3-BED TOWNHOUSE ( TYPE-4 )

No. of BR	3
Total Area	3,767 Sq.ft

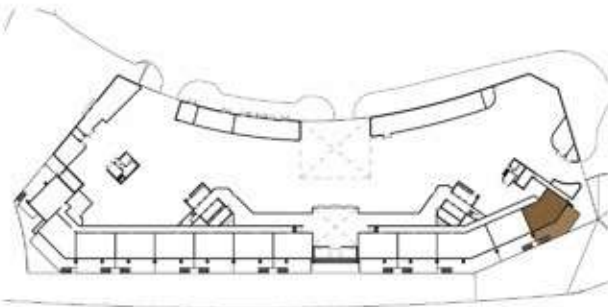
(\*) Starting from



GROUND LEVEL



FIRST LEVEL



LVL 1 - 2

Disclaimer: Dimensions, apartment areas & layouts are indicative and may differ slightly during subsequent design development stages. Furniture shown is for illustration purpose only.



# WHERE LIVING TAKES FORM

In every line drawn and every space shaped, there is intention. A quiet pursuit of harmony between architecture and life. These layouts are not just about where walls stand they are about where light lingers, where conversations unfold, where days take shape. Thoughtful in design, generous in spirit, they offer more than structure, they offer a way to dwell, to breathe, to belong.

# OUR WALLS HOLD *serenity*

## About

**Royal Development Holding** is a visionary boutique real estate developer launched in 2025 under the umbrella of the UAE-based conglomerate ESG Emirates Stallions Group aiming to evolve spaces and elevate lives, the company is committed to building lifestyle-drive communities that redefine the future of living through excellence, innovation and comprehensive real estate solutions.

**SAAS Properties** is a distinguished luxury property developer headquartered in the UAE. The company has built a strong reputation for excellence in commercial, residential, and retail real estate development. Renowned for its ability to create thoughtfully designed spaces and driven by a vision to craft unparalleled living and working environments, SAAS Properties is committed to redefining luxury real estate, offering innovative architectural solutions that set new standards for quality and sophistication.



