

PALACE

RESIDENCES
HILLSIDE

DUBAI HILLS ESTATE

FLOOR PLANS

EMAAR

DUBAI HILLS ESTATE

UNIT P01, 101, 103, 203, 210, ,211, 212, 213, 303, 310, 311, 312, 313, 403, 410, 411, 412, 413, 503, 510, 511, 512, 513, 603, 610, 611, 612, 613, 703, 710, 711, 712, 713, 803, 810, 811, 812, 813, 903, 910, 911, 912, 913, 1003, 1010, 1011, 1012, 1013, 1103, 1110, 1111, 1112, 1113, 1203, 1210, 1211, 1212, 1213, 1303, 1310, 1311, 1312, 1313, 1403, 1410, 1411, 1412, 1413, 1503, 1510, 1511, 1512, 1513, 1603, 1610, 1611, 1612, 1613, 1703, 1710, 1711, 1803, 1810, 1811, 1903, 1910, 1911, 2003, 2010, 2011

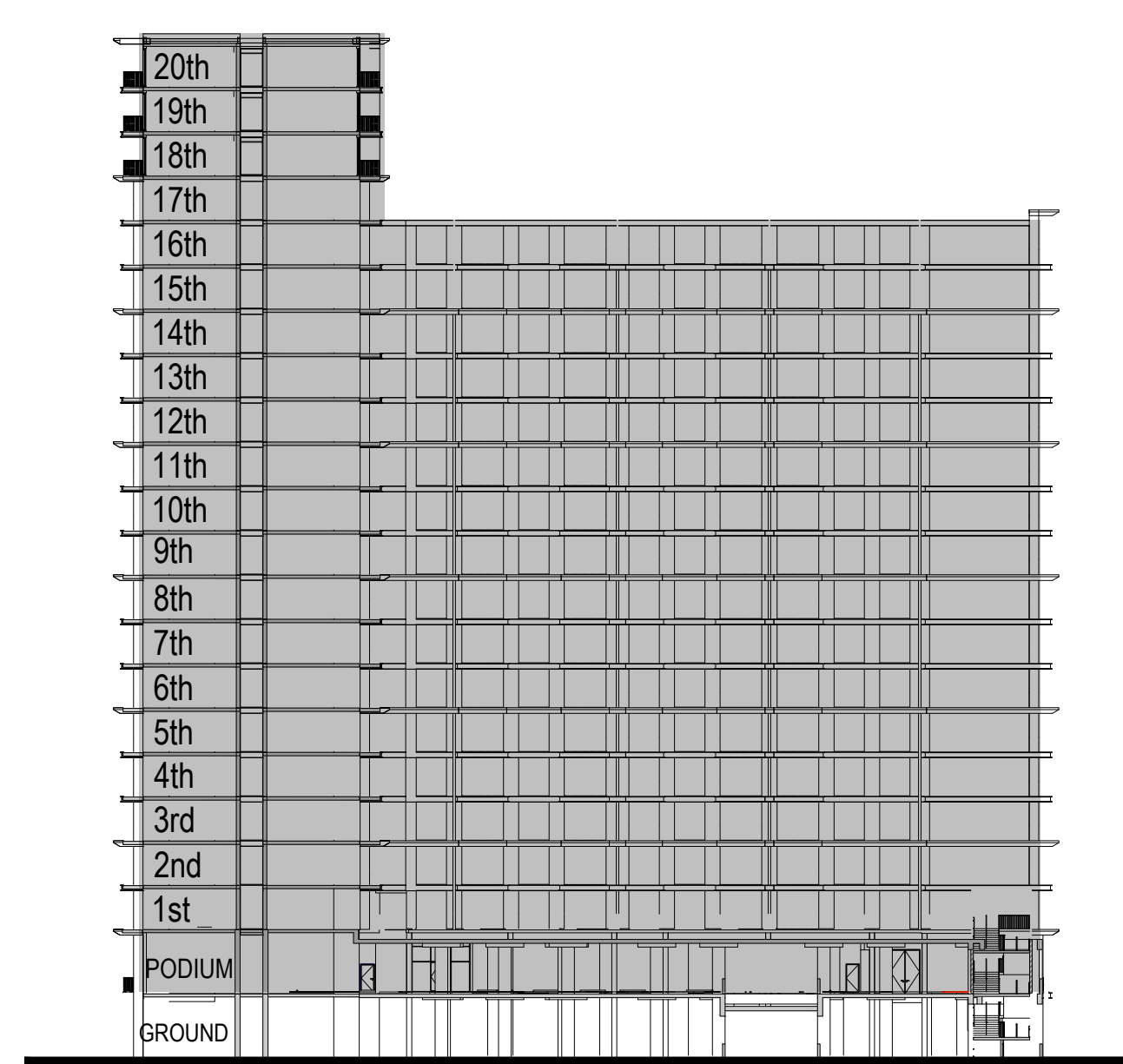
| | | |
|--------------|---------------|-------------|
| SUITE AREA | 610.05 SQ.FT. | 56.68 SQ.M. |
| BALCONY AREA | 70.40 SQ.FT. | 6.54 SQ.M. |
| TOTAL AREA | 680.44 SQ.FT. | 63.22 SQ.M. |

UNIT 201, 301, 401, 501, 601, 701, 801, 901, 1001, 1101, 1201, 1301, 1401, 1501, 1601,
1701, 1801, 1901, 2001

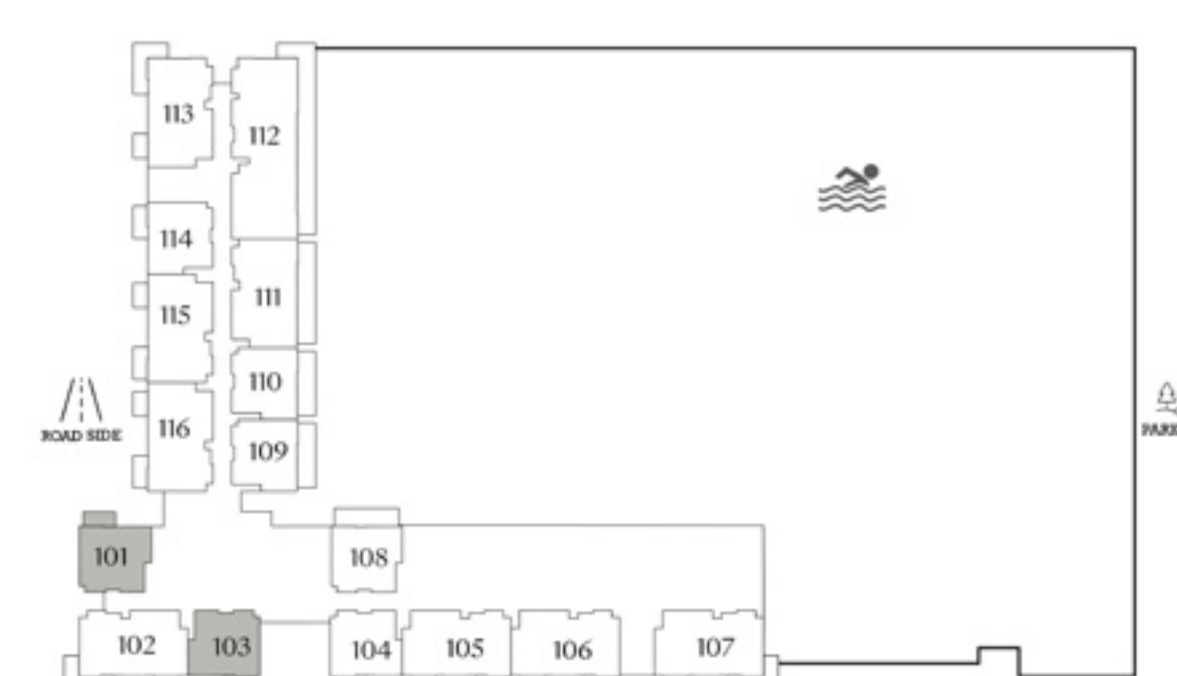
| | | |
|--------------|---------------|-------------|
| SUITE AREA | 614.94 SQ.FT. | 57.13 SQ.M. |
| BALCONY AREA | 70.40 SQ.FT. | 6.54 SQ.M. |
| TOTAL AREA | 685.34 SQ.FT. | 63.67 SQ.M. |



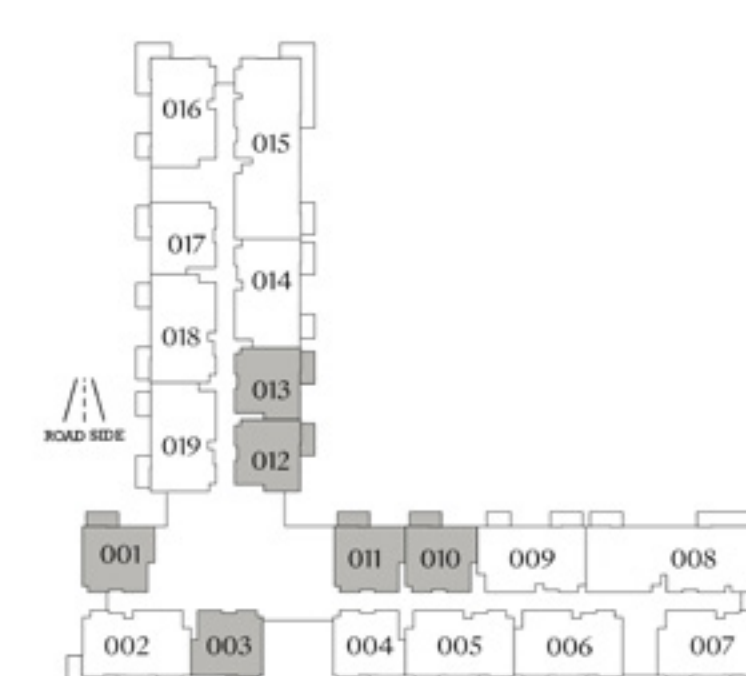
KEYPLAN



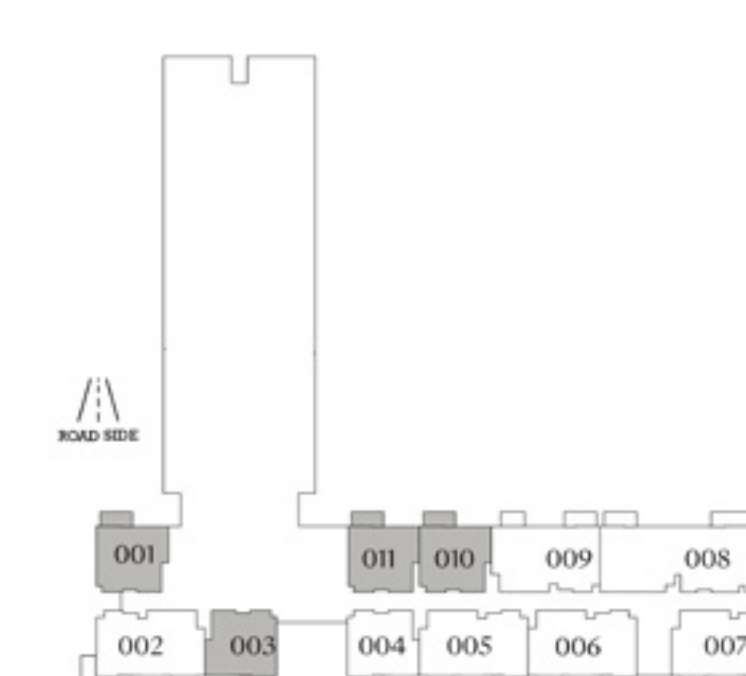
PODIUM LEVEL



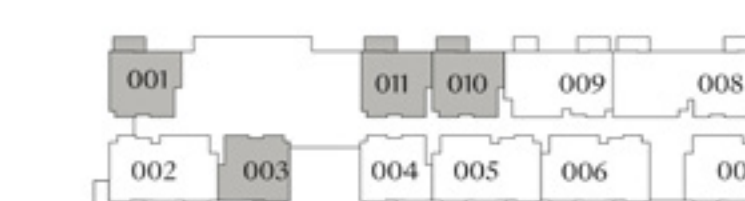
LEVEL 1



LEVELS 2 TO 16



LEVEL 17



LEVELS 18-20

FLOOR PLAN 1. All dimensions are in imperial and metric, and measured from finish to finish excluding construction tolerances. 2. All materials, dimensions, and drawings are approximate only. 3. Information is subject to change without notice, at developer's absolute discretion. 4. Actual area may vary from the stated area. 5. Drawings not to scale. 6. All images used are for illustrative purposes only and do not represent the actual size, features, specifications, fittings, and furnishings. 7. The developer reserves the right to make revisions / alterations, at it's absolute discretion, without any liability whatsoever.

EMAAR

PALACE
RESIDENCES
HILLSIDE

DUBAI HILLS ESTATE

1 BEDROOM TYPE A1

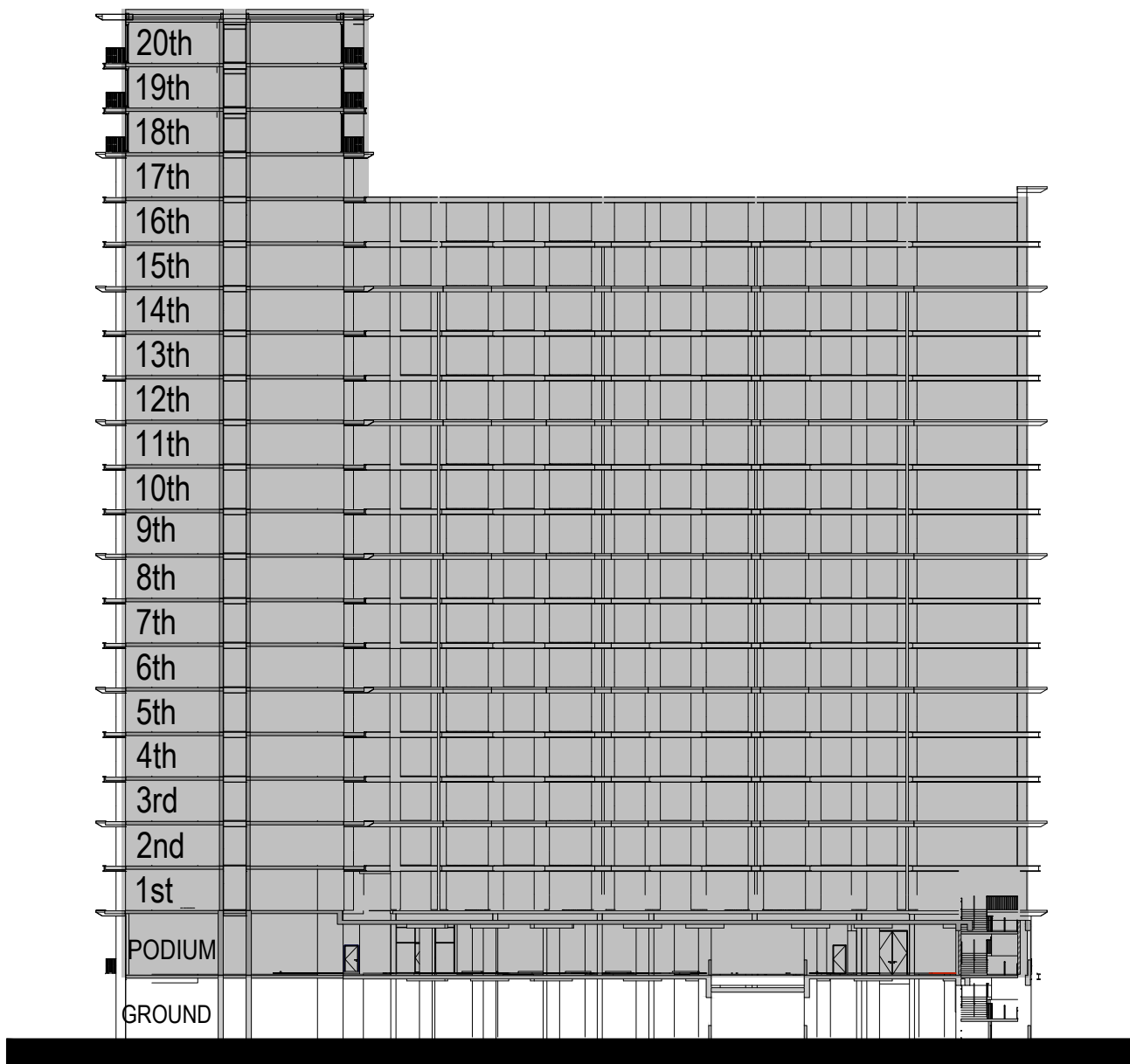
| UNIT P05 | | |
|--------------|---------------|-------------|
| SUITE AREA | 605.25 SQ.FT. | 56.23 SQ.M. |
| BALCONY AREA | 70.50 SQ.FT. | 6.55 SQ.M. |
| TOTAL AREA | 675.76 SQ.FT. | 62.78 SQ.M. |

UNIT 104, 114, 204, 217, 304, 317, 404, 417, 504, 517, 604, 617, 704, 717, 804, 817, 904, 917, 1004, 1017, 1104, 1117, 1204, 1217, 1304, 1317, 1404, 1417, 1504, 1517, 1604, 1617, 1704, 1804, 1904, 2004

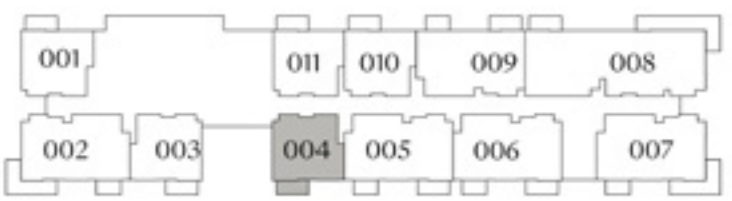
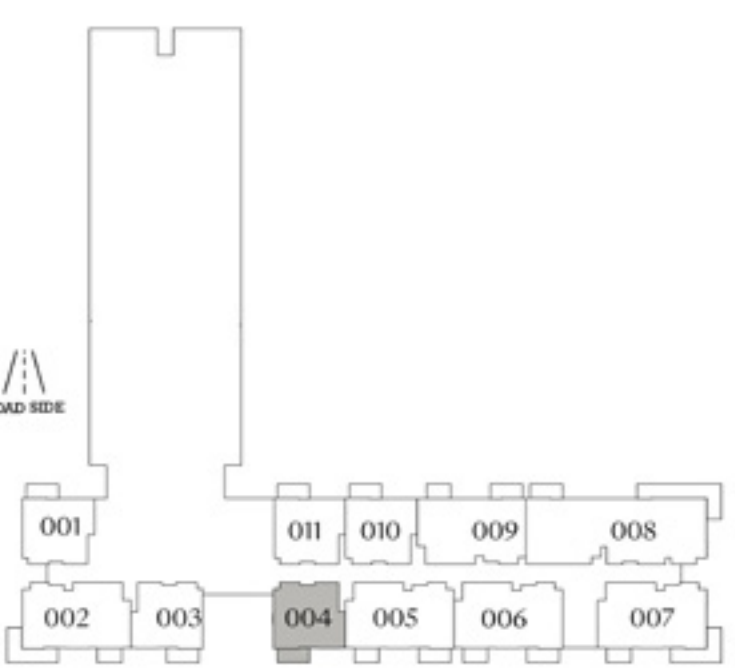
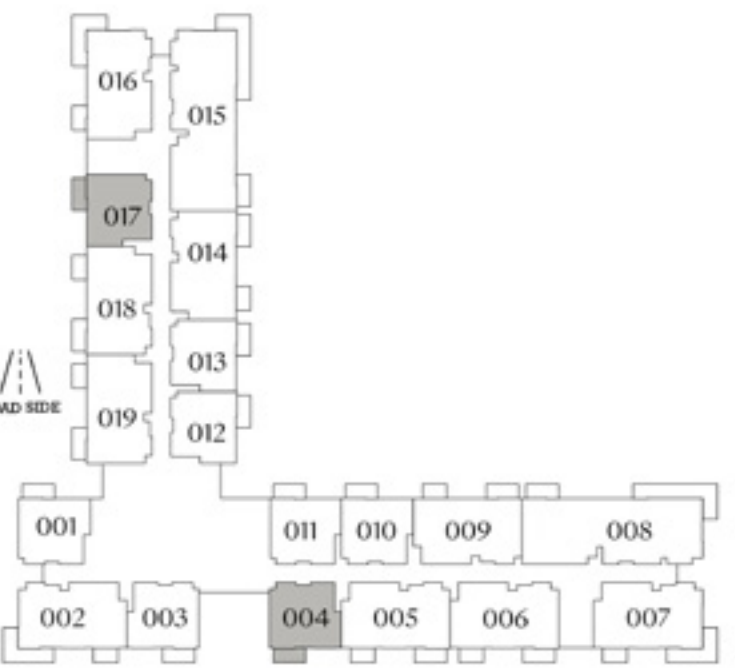
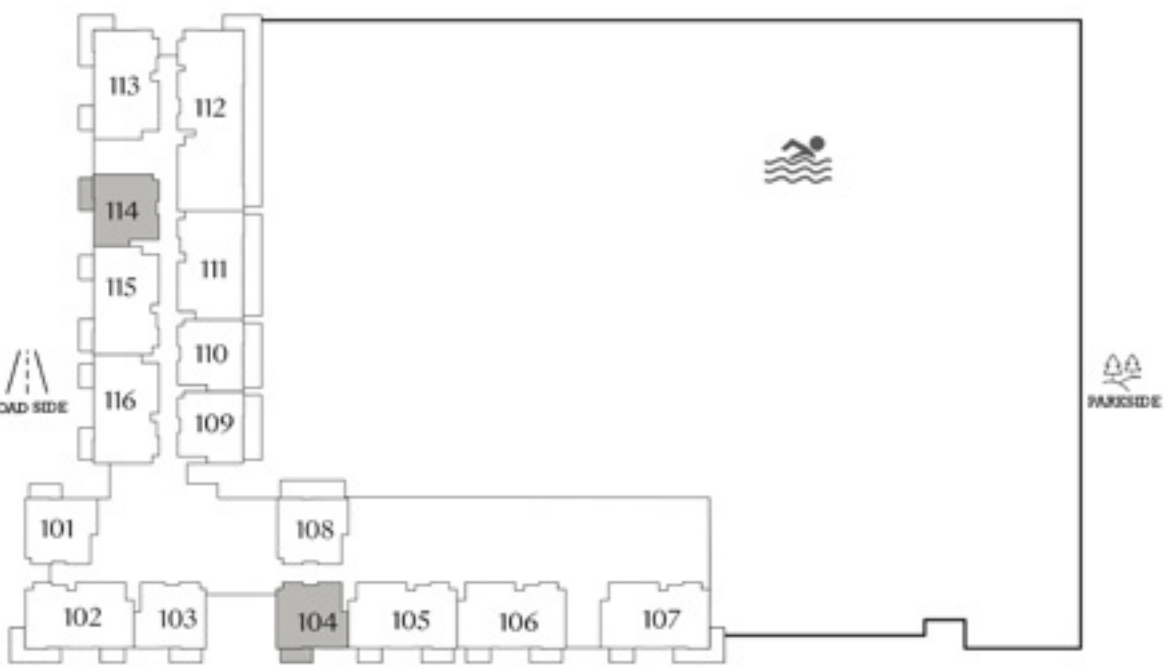
| | | |
|--------------|---------------|-------------|
| SUITE AREA | 610.52 SQ.FT. | 56.72 SQ.M. |
| BALCONY AREA | 70.40 SQ.FT. | 6.54 SQ.M. |
| TOTAL AREA | 680.91 SQ.FT. | 63.26 SQ.M. |



KEY SECTION



KEYPLAN



PODIUM LEVEL

LEVEL 1

LEVELS 2 TO 16

LEVEL 17

LEVELS 18-20

FLOOR PLAN 1. All dimensions are in imperial and metric, and measured from finish to finish excluding construction tolerances. 2. All materials, dimensions, and drawings are approximate only. 3. Information is subject to change without notice, at developer's absolute discretion. 4. Actual area may vary from the stated area. 5. Drawings not to scale. 6. All images used are for illustrative purposes only and do not represent the actual size, features, specifications, fittings, and furnishings. 7. The developer reserves the right to make revisions / alterations, at it's absolute discretion, without any liability whatsoever.

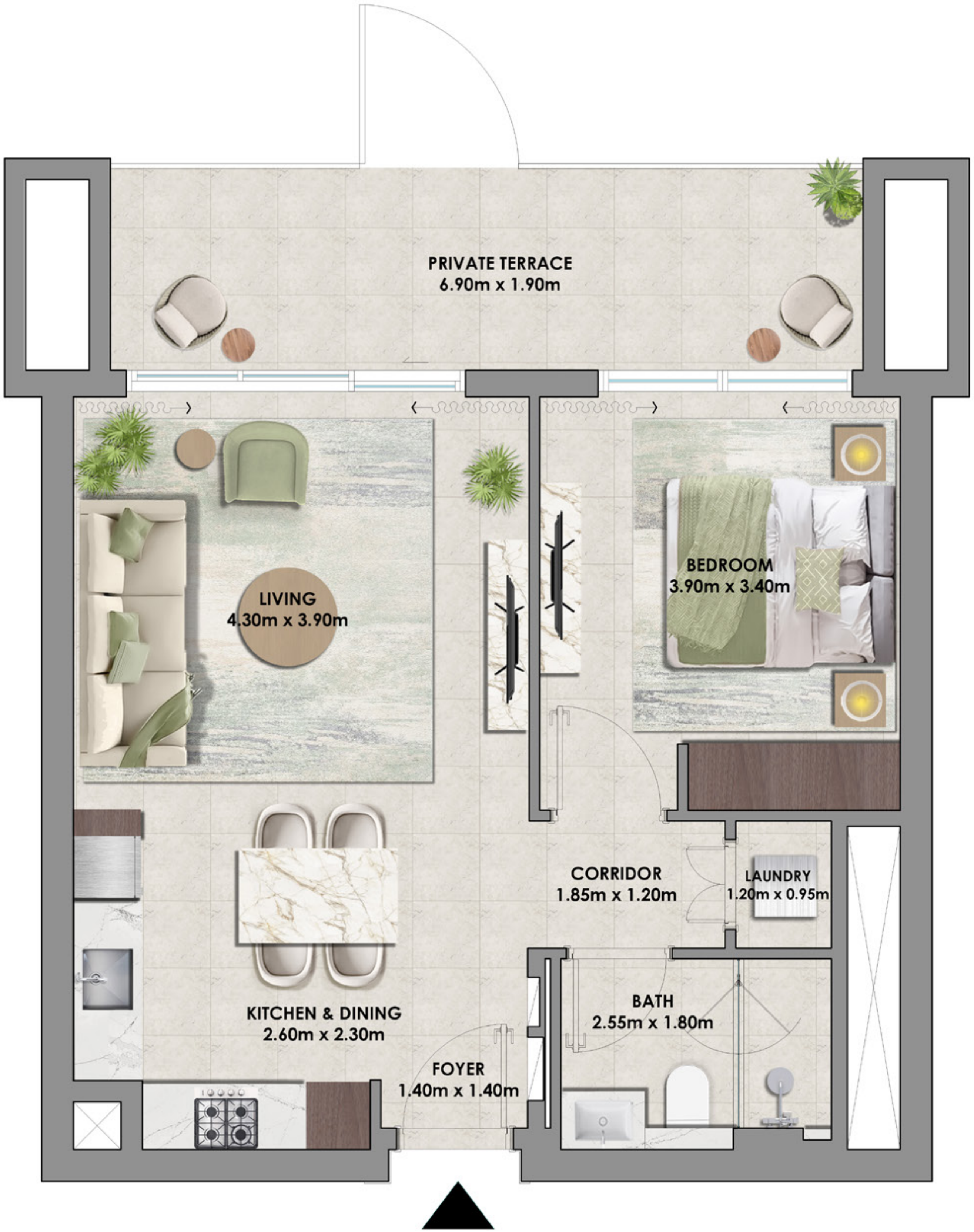
PALACE

RESIDENCES
HILLSIDE

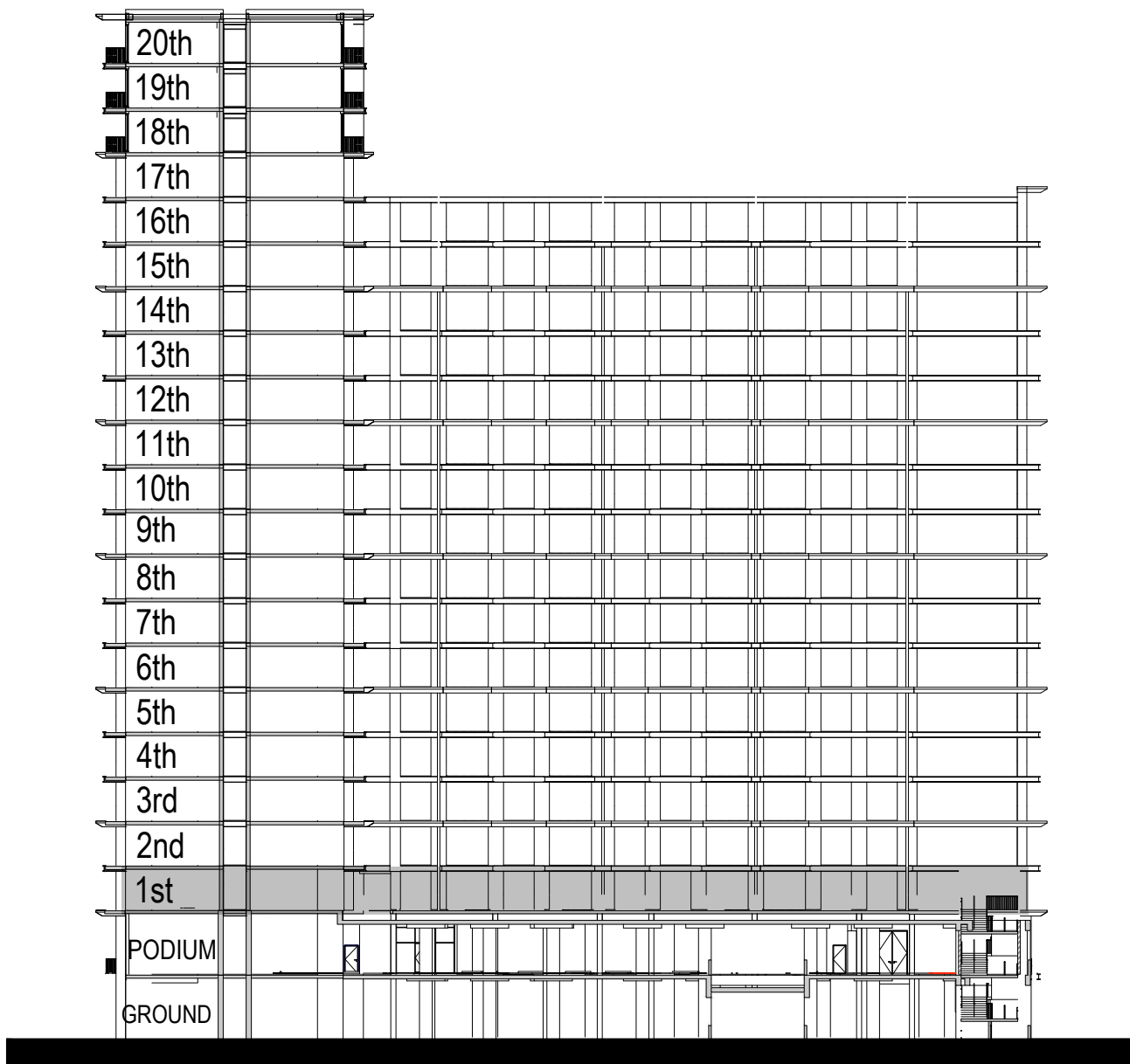
DUBAI HILLS ESTATE

1 BEDROOM TYPE A2

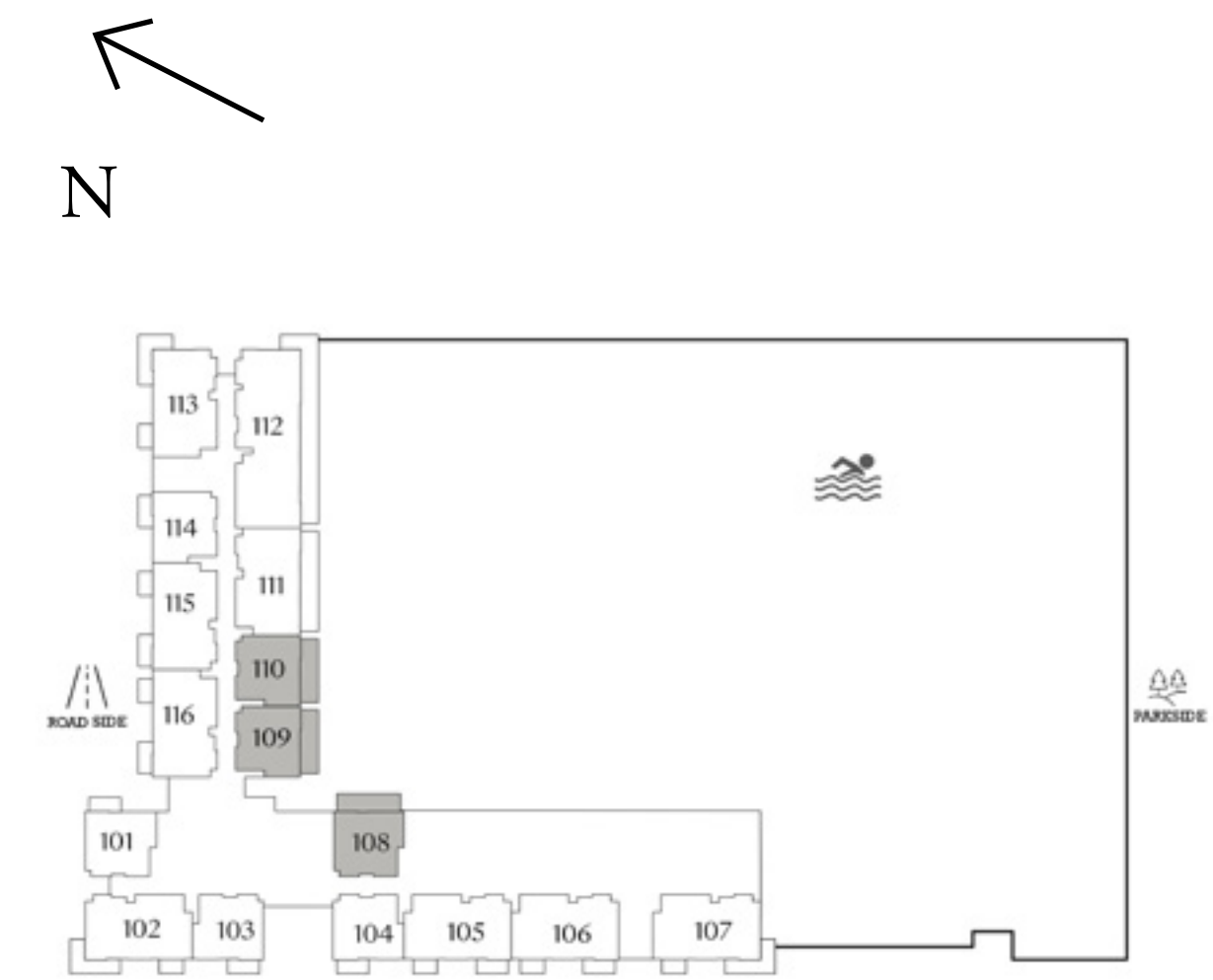
| UNIT 108, 109, 110 | | |
|--------------------|---------------|-------------|
| SUITE AREA | 609.88 SQ.FT. | 56.66 SQ.M. |
| BALCONY AREA | 160.31 SQ.FT. | 14.89 SQ.M. |
| TOTAL AREA | 770.12 SQ.FT. | 71.55 SQ.M. |



KEY SECTION



KEYPLAN



LEVEL 1

FLOOR PLAN 1. All dimensions are in imperial and metric, and measured from finish to finish excluding construction tolerances. 2. All materials, dimensions, and drawings are approximate only. 3. Information is subject to change without notice, at developer's absolute discretion. 4. Actual area may vary from the stated area. 5. Drawings not to scale. 6. All images used are for illustrative purposes only and do not represent the actual size, features, specifications, fittings, and furnishings. 7. The developer reserves the right to make revisions / alterations, at it's absolute discretion, without any liability whatsoever.

PALACE
RESIDENCES
HILLSIDE

DUBAI HILLS ESTATE

2 BEDROOM TYPE A

UNIT P03, P04, 105, 106, 115, 205, 206, 214, 218, 305, 306, 314, 318, 405, 406, 414, 418, 505, 506, 514, 518, 605, 606, 614, 618, 705, 706, 714, 718, 805, 806, 814, 818, 905, 906, 914, 918, 1005, 1006, 1014, 1018, 1105, 1106, 1114, 1118, 1205, 1206, 1214, 1218, 1305, 1306, 1314, 1318, 1405, 1406, 1414, 1418, 1505, 1506, 1514, 1518, 1605, 1606, 1614, 1618, 1705, 1706, 1805, 1806, 1905, 1906, 2005, 2006

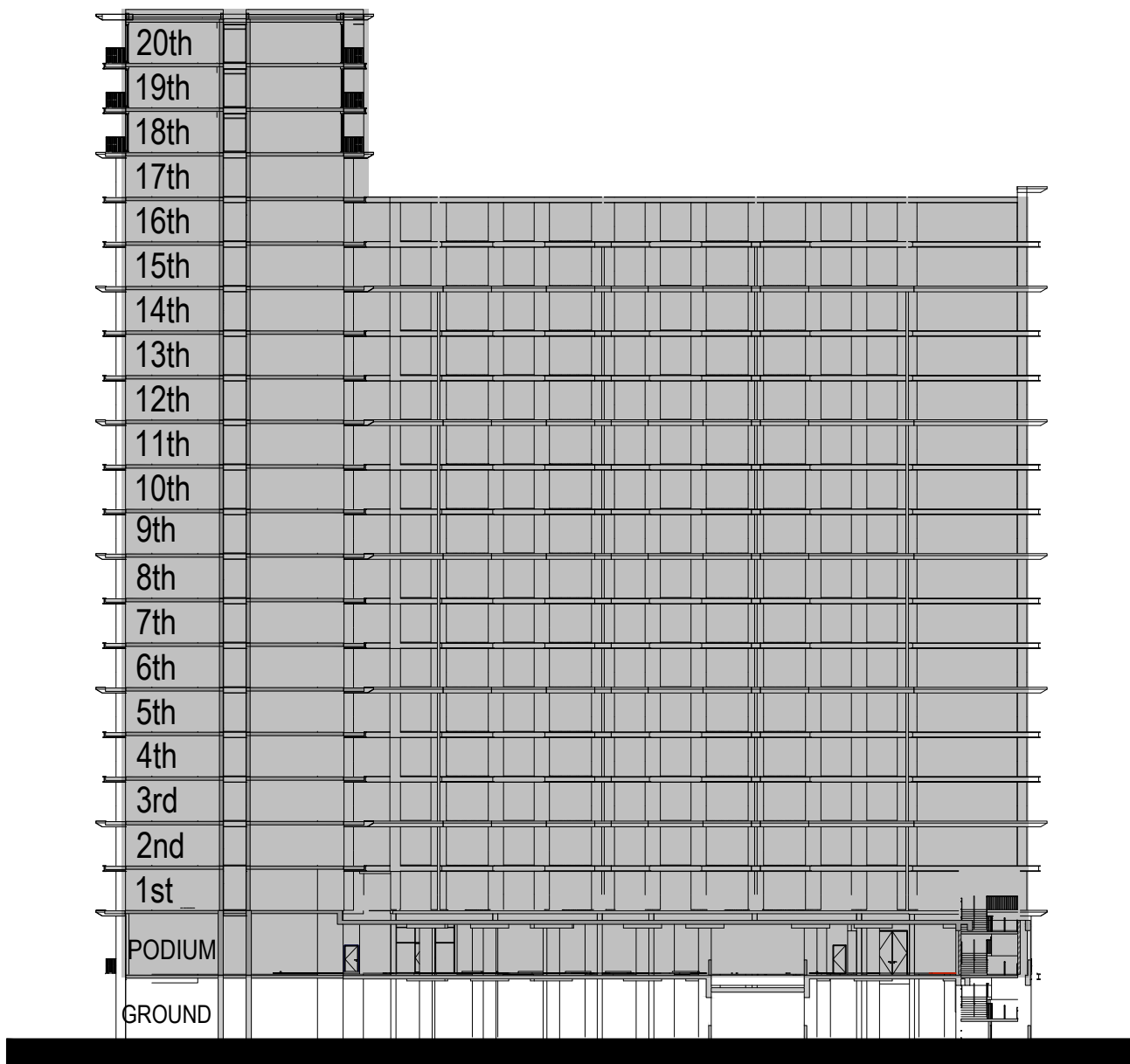
| | | |
|--------------|----------------|-------------|
| SUITE AREA | 936.79 SQ.FT. | 87.03 SQ.M. |
| BALCONY AREA | 124.60 SQ.FT. | 11.58 SQ.M. |
| TOTAL AREA | 1061.39 SQ.FT. | 98.61 SQ.M. |

UNIT 116, 219, 319, 419, 519, 619, 719, 819, 919, 1019, 1119, 1219, 1319, 1419, 1519, 1619

| | | |
|--------------|----------------|-------------|
| SUITE AREA | 937.00 SQ.FT. | 87.05 SQ.M. |
| BALCONY AREA | 128.20 SQ.FT. | 11.91 SQ.M. |
| TOTAL AREA | 1065.20 SQ.FT. | 98.96 SQ.M. |



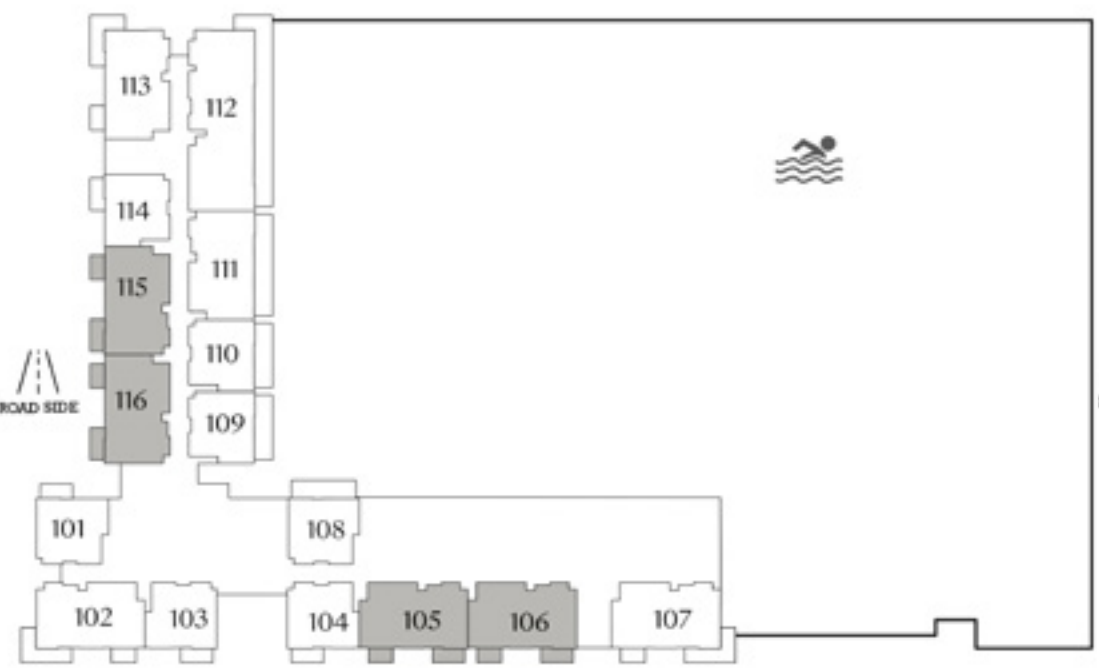
KEY SECTION



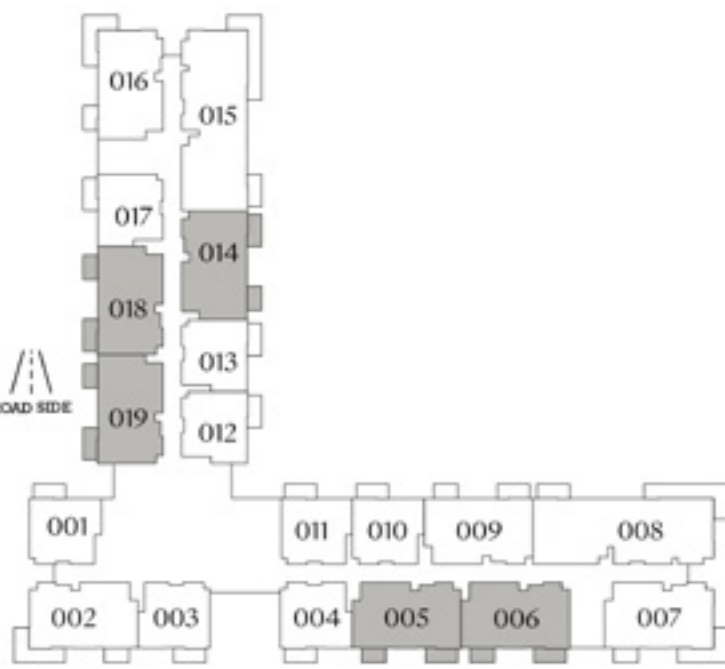
KEYPLAN



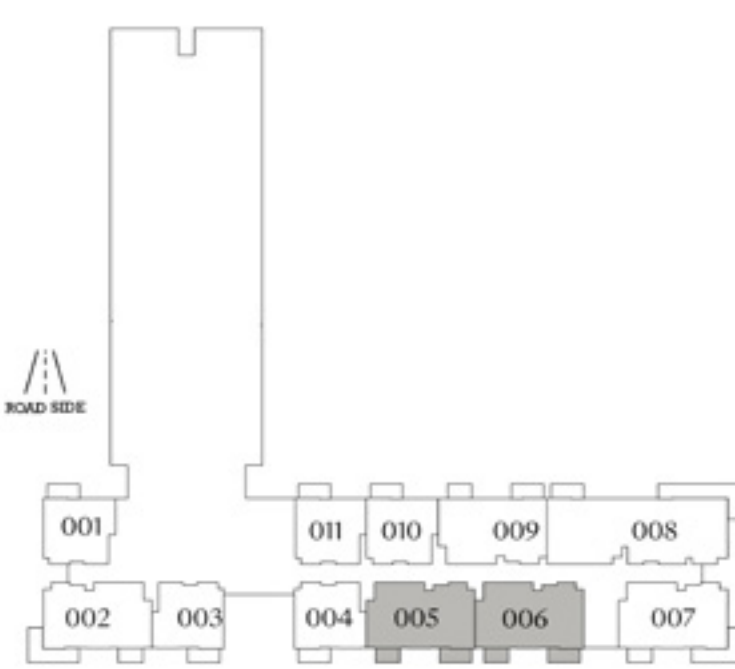
PODIUM LEVEL



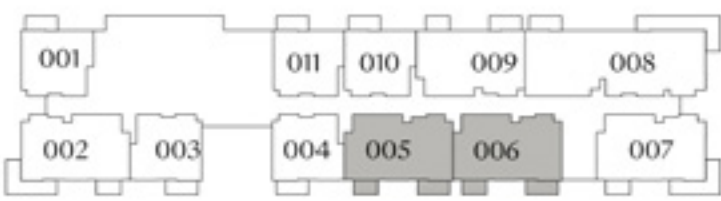
LEVEL 1



LEVELS 2 TO 16



LEVEL 17



LEVELS 18-20

FLOOR PLAN 1. All dimensions are in imperial and metric, and measured from finish to finish excluding construction tolerances. 2. All materials, dimensions, and drawings are approximate only. 3. Information is subject to change without notice, at developer's absolute discretion. 4. Actual area may vary from the stated area. 5. Drawings not to scale. 6. All images used are for illustrative purposes only and do not represent the actual size, features, specifications, fittings, and furnishings. 7. The developer reserves the right to make revisions / alterations, at it's absolute discretion, without any liability whatsoever.

PALACE
RESIDENCES
HILLSIDE

DUBAI HILLS ESTATE

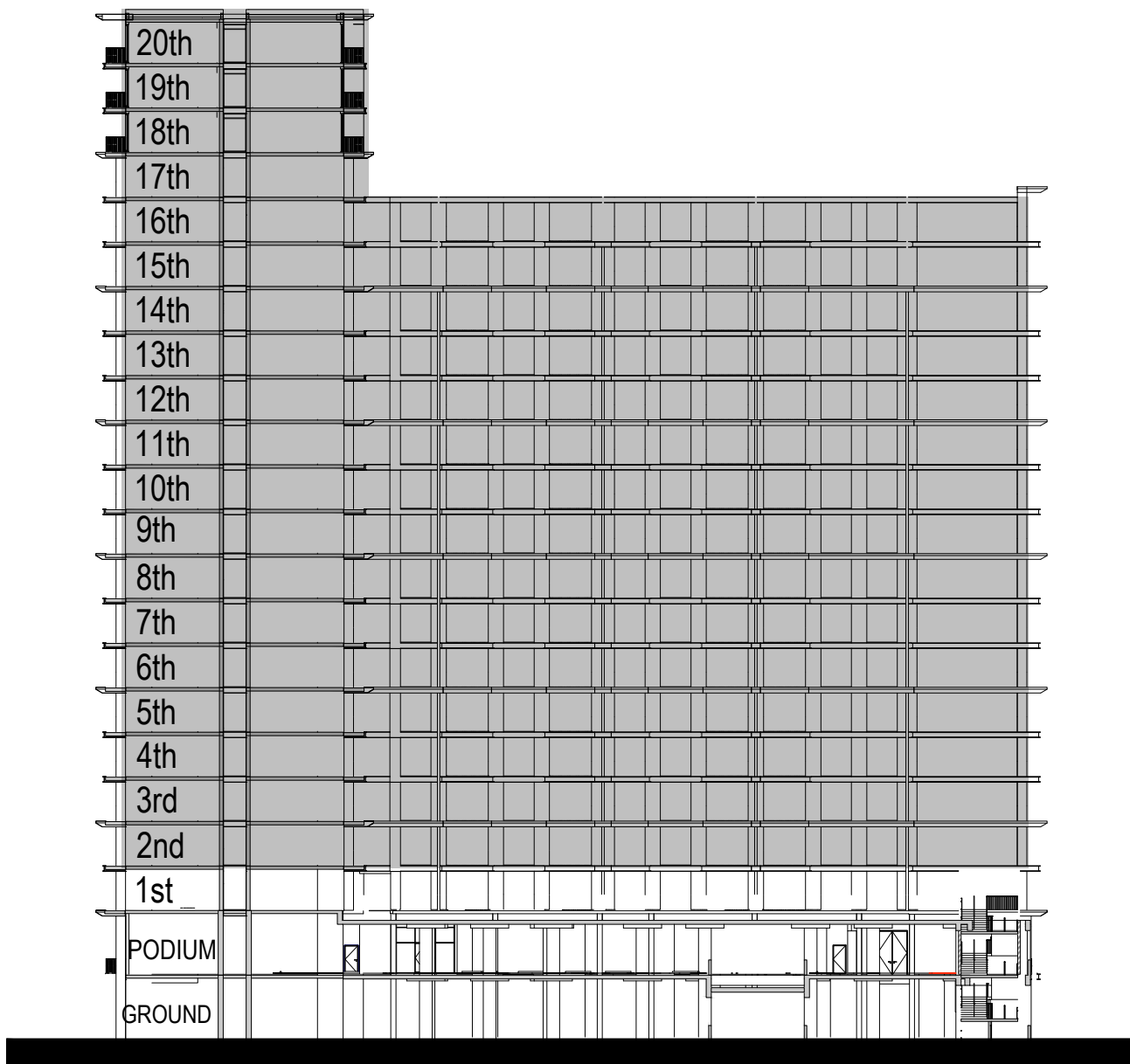
2 BEDROOM TYPE A1

UNIT 209, 309, 409, 509, 609, 709, 809, 909, 1009, 1109, 1209, 1309, 1409, 1509, 1609, 1709, 1809, 1909, 2009

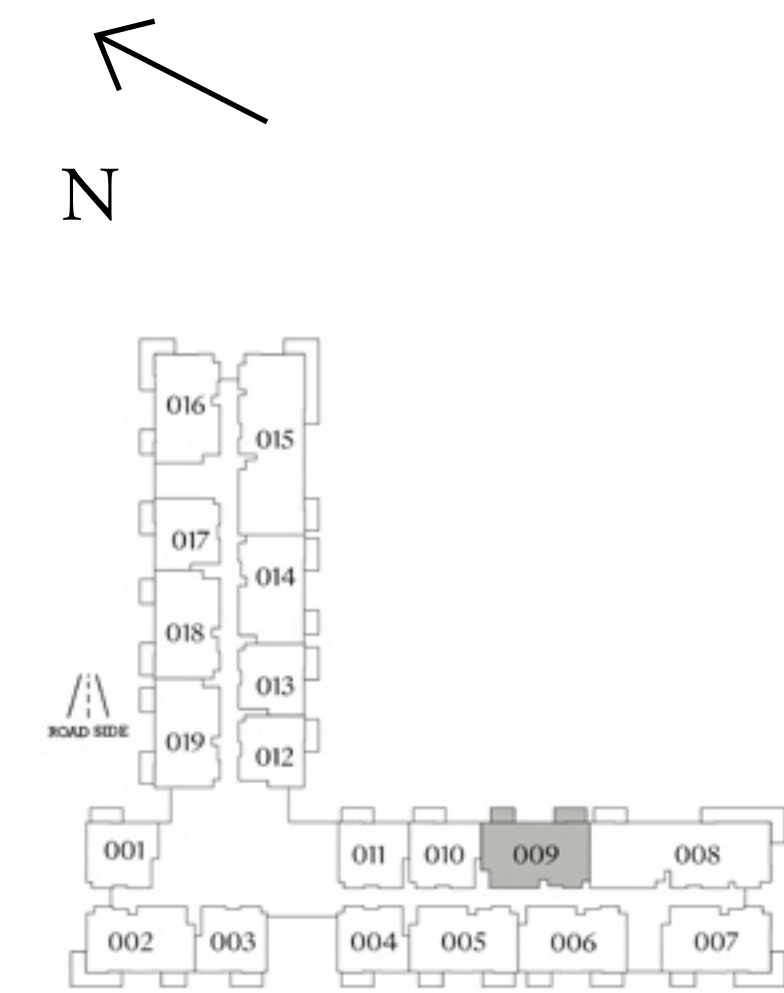
| | | |
|--------------|----------------|-------------|
| SUITE AREA | 937.00 SQ.FT. | 87.05 SQ.M. |
| BALCONY AREA | 124.56 SQ.FT. | 11.57 SQ.M. |
| TOTAL AREA | 1061.56 SQ.FT. | 98.62 SQ.M. |



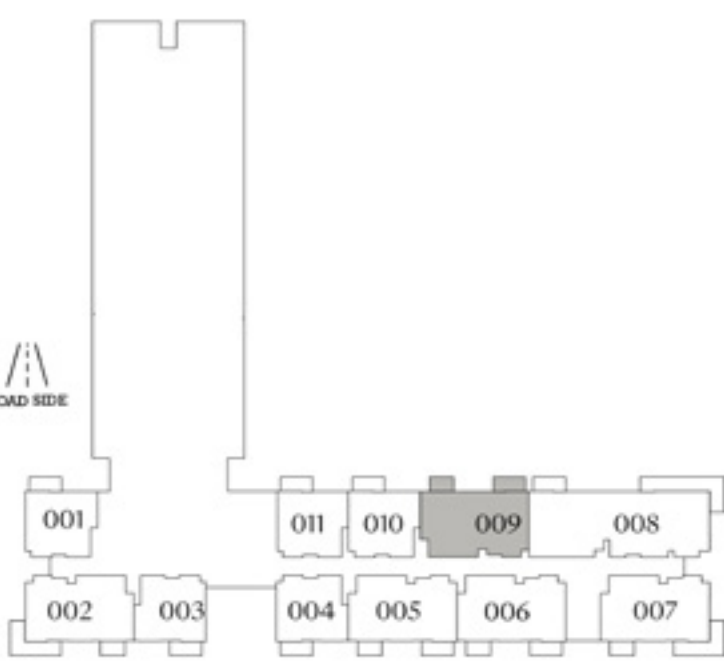
KEY SECTION



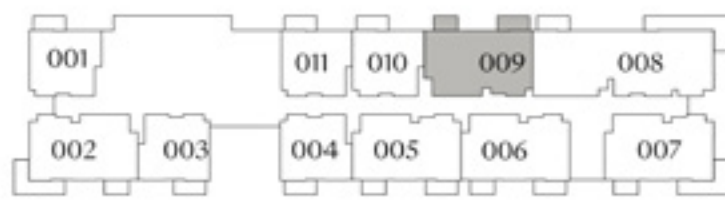
KEYPLAN



LEVELS 2 TO 16



LEVEL 17



LEVELS 18-20

FLOOR PLAN 1. All dimensions are in imperial and metric, and measured from finish to finish excluding construction tolerances. 2. All materials, dimensions, and drawings are approximate only. 3. Information is subject to change without notice, at developer’s absolute discretion. 4. Actual area may vary from the stated area. 5. Drawings not to scale. 6. All images used are for illustrative purposes only and do not represent the actual size, features, specifications, fittings, and furnishings. 7. The developer reserves the right to make revisions / alterations, at it’s absolute discretion, without any liability whatsoever.

PALACE
RESIDENCES
HILLSIDE

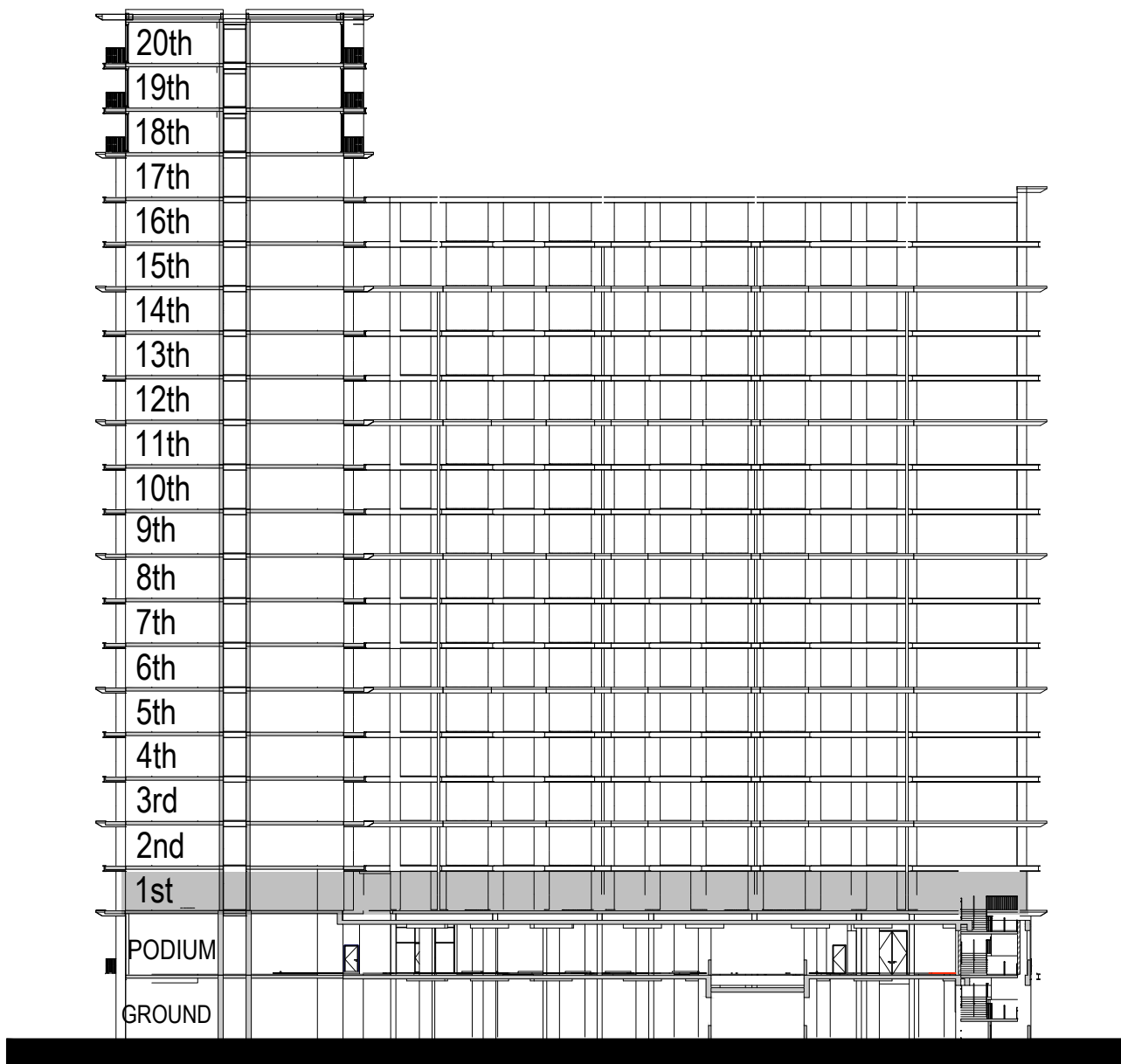
DUBAI HILLS ESTATE

2 BEDROOM TYPE A2

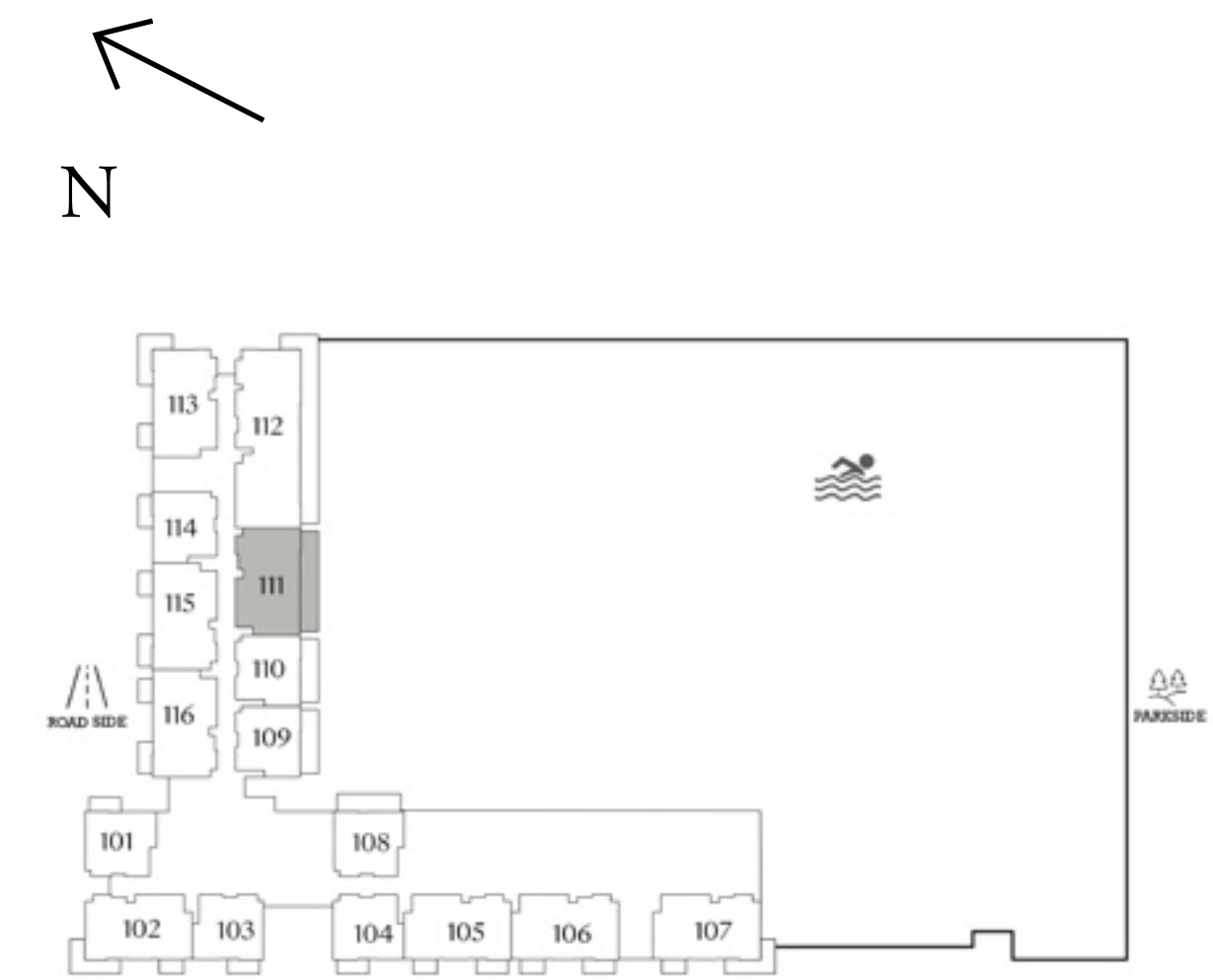
| | UNIT 111 | |
|--------------|----------------|--------------|
| SUITE AREA | 936.89 SQ.FT. | 87.04 SQ.M. |
| BALCONY AREA | 253.81 SQ.FT. | 23.58 SQ.M. |
| TOTAL AREA | 1190.70 SQ.FT. | 110.62 SQ.M. |



KEY SECTION



KEYPLAN



LEVEL 1

FLOOR PLAN 1. All dimensions are in imperial and metric, and measured from finish to finish excluding construction tolerances. 2. All materials, dimensions, and drawings are approximate only. 3. Information is subject to change without notice, at developer's absolute discretion. 4. Actual area may vary from the stated area. 5. Drawings not to scale. 6. All images used are for illustrative purposes only and do not represent the actual size, features, specifications, fittings, and furnishings. 7. The developer reserves the right to make revisions / alterations, at it's absolute discretion, without any liability whatsoever.

PALACE
RESIDENCES
HILLSIDE

DUBAI HILLS ESTATE

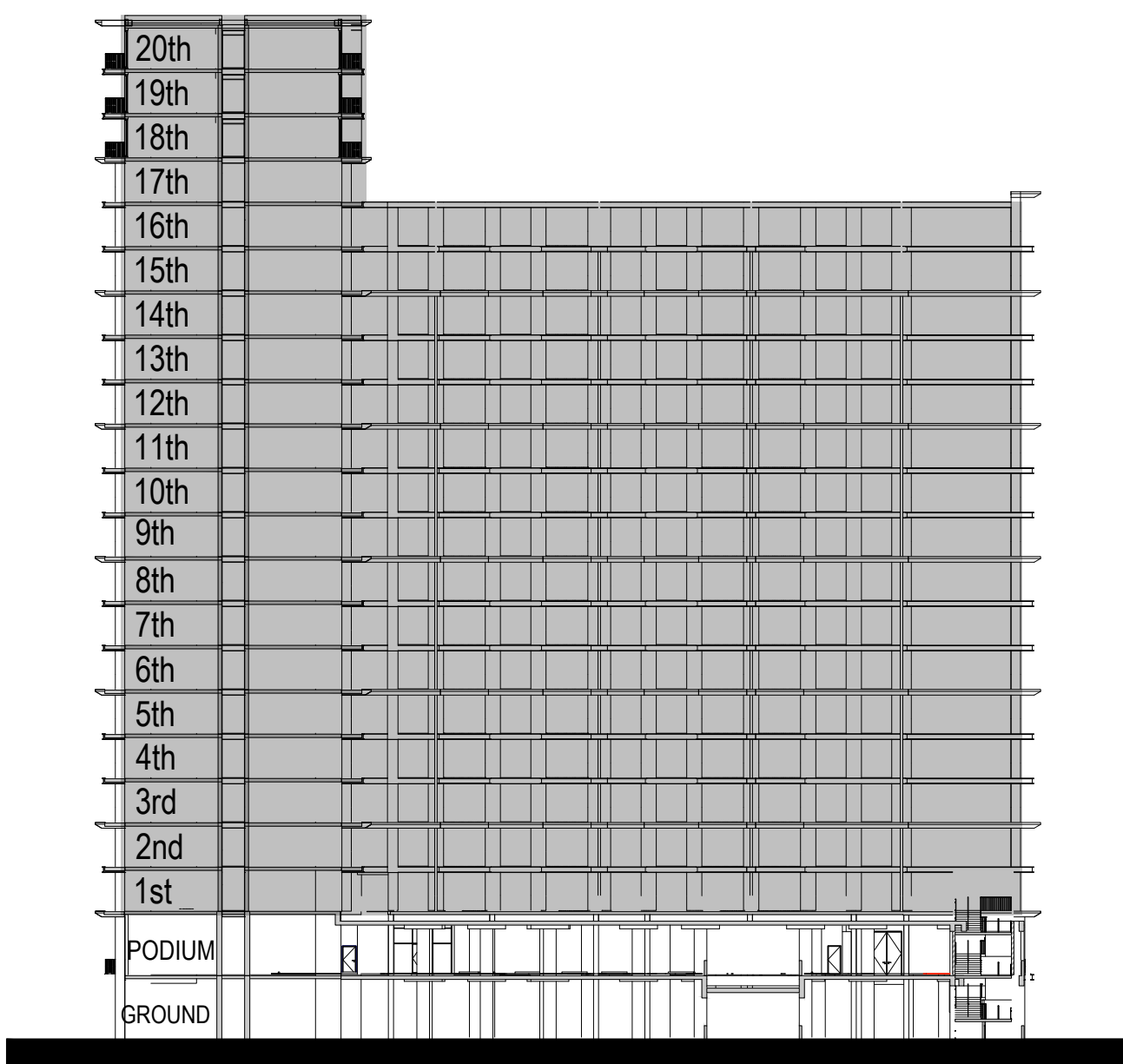
2 BEDROOM TYPE B

UNIT 107, 207, 307, 407, 507, 607, 707, 807, 907, 1007, 1107, 1207, 1307, 1407, 1507, 1607, 1707, 1807, 1907, 2007

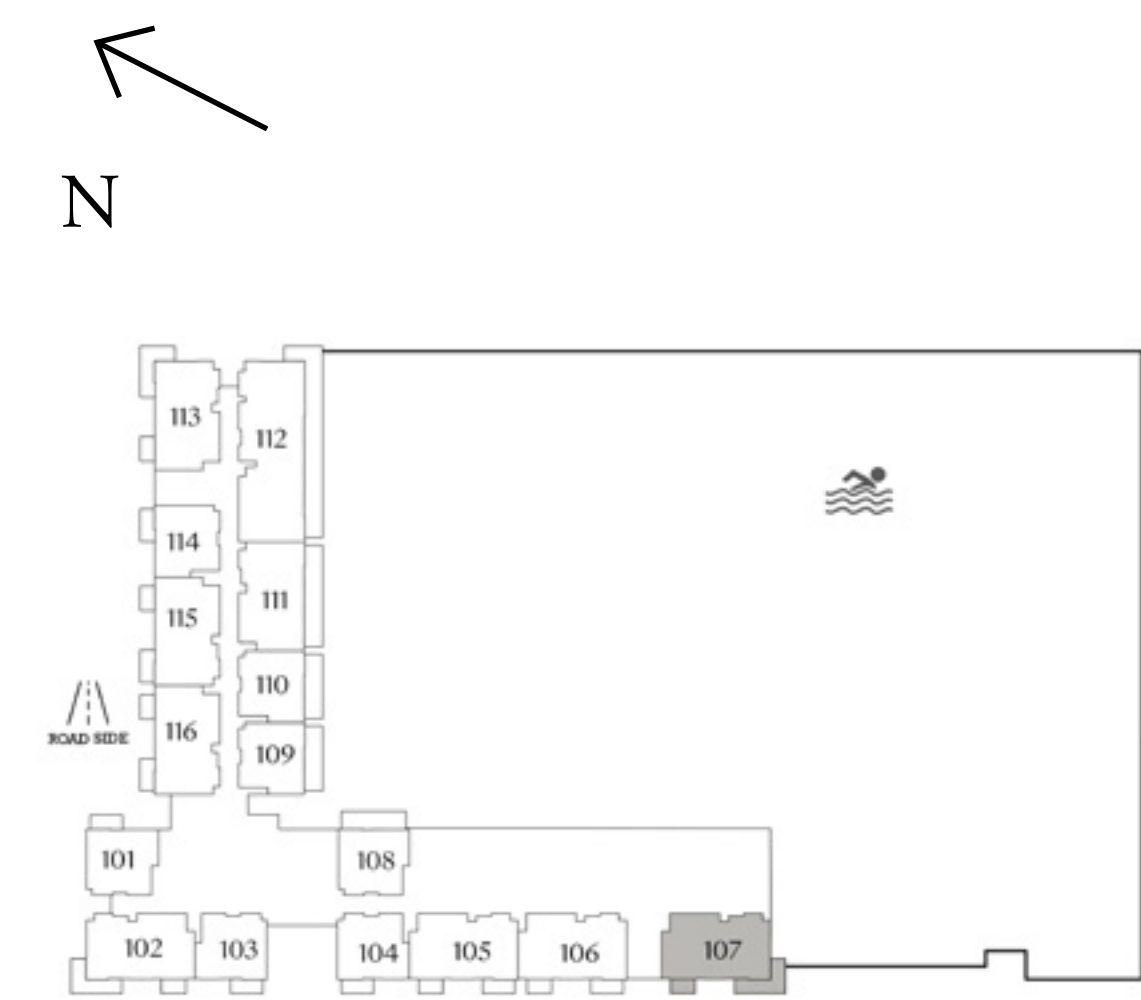
| | | |
|--------------|----------------|--------------|
| SUITE AREA | 938.09 SQ.FT. | 87.15 SQ.M. |
| BALCONY AREA | 209.03 SQ.FT. | 19.42 SQ.M. |
| TOTAL AREA | 1147.12 SQ.FT. | 106.57 SQ.M. |



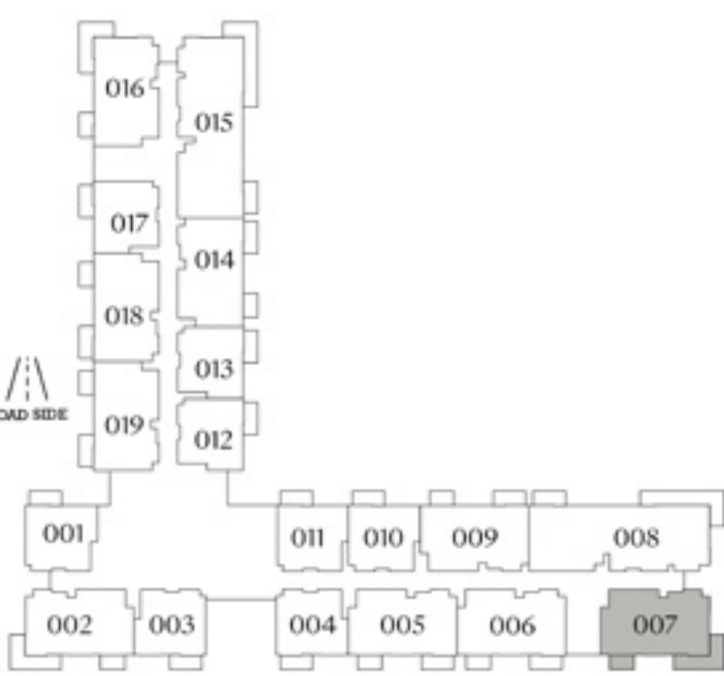
KEY SECTION



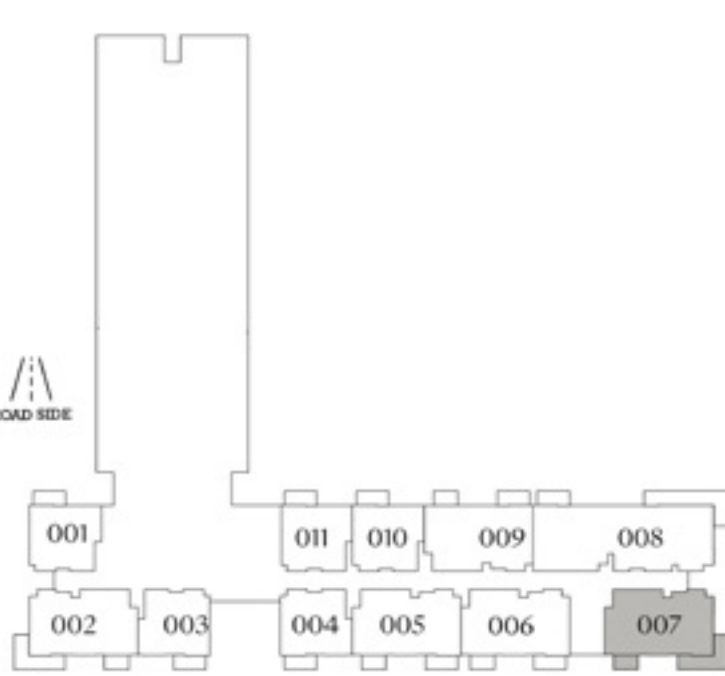
KEYPLAN



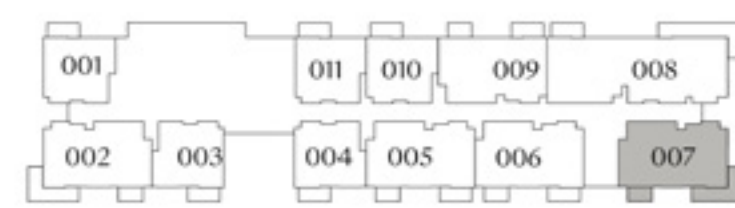
LEVEL 1



LEVELS 2 TO 16



LEVEL 17



LEVELS 18-20

FLOOR PLAN 1. All dimensions are in imperial and metric, and measured from finish to finish excluding construction tolerances. 2. All materials, dimensions, and drawings are approximate only. 3. Information is subject to change without notice, at developer's absolute discretion. 4. Actual area may vary from the stated area. 5. Drawings not to scale. 6. All images used are for illustrative purposes only and do not represent the actual size, features, specifications, fittings, and furnishings. 7. The developer reserves the right to make revisions / alterations, at it's absolute discretion, without any liability whatsoever.

PALACE
RESIDENCES
HILLSIDE

DUBAI HILLS ESTATE

2 BEDROOM TYPE B1

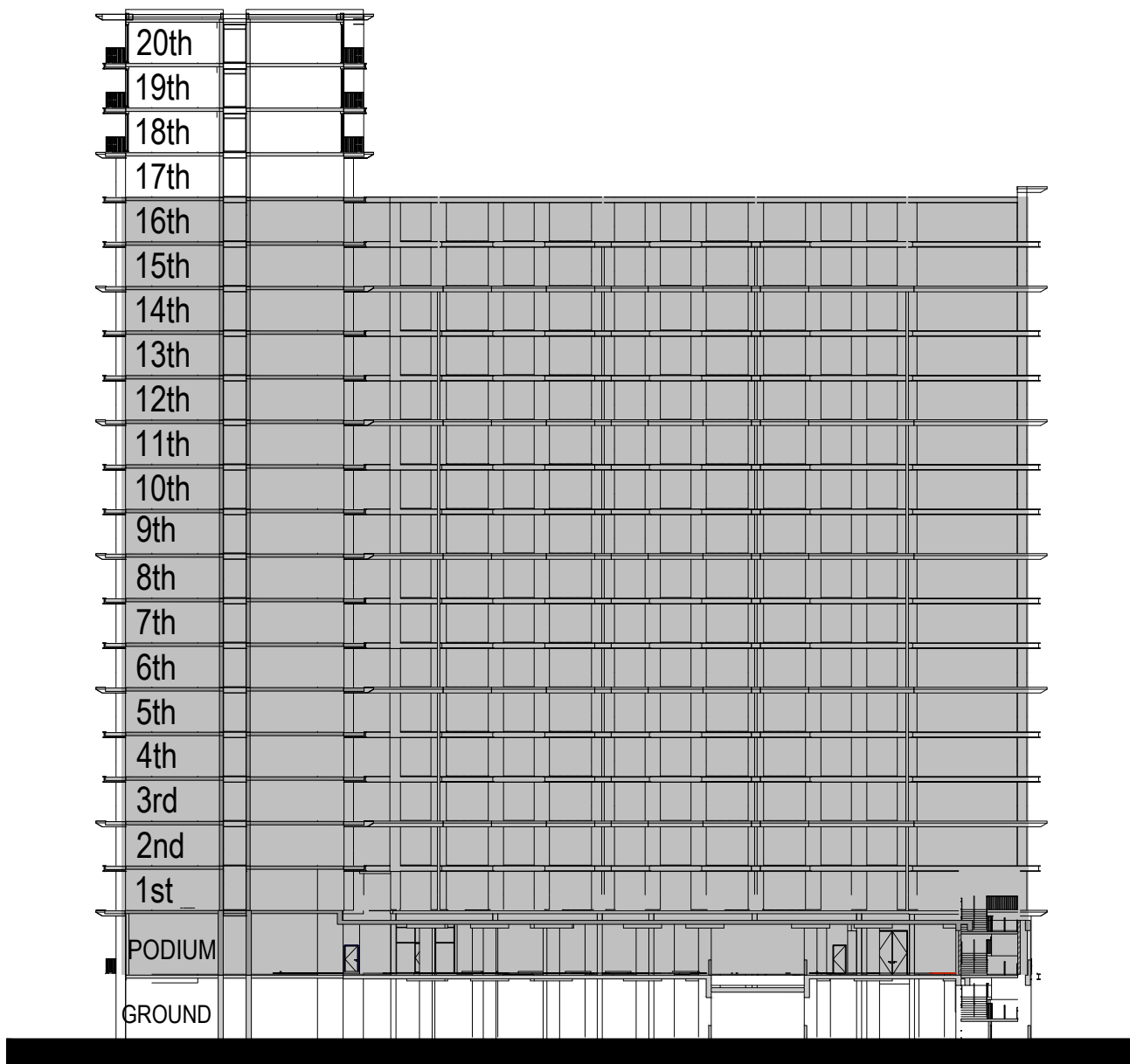
| UNIT P06 | | |
|--------------|----------------|--------------|
| SUITE AREA | 933.02 SQ.FT. | 86.68 SQ.M. |
| BALCONY AREA | 209.04 SQ.FT. | 19.42 SQ.M. |
| TOTAL AREA | 1142.05 SQ.FT. | 106.10 SQ.M. |

UNIT 113, 216, 316, 416, 516, 616, 716, 816, 916, 1016, 1116, 1216, 1316, 1416, 1516, 1616

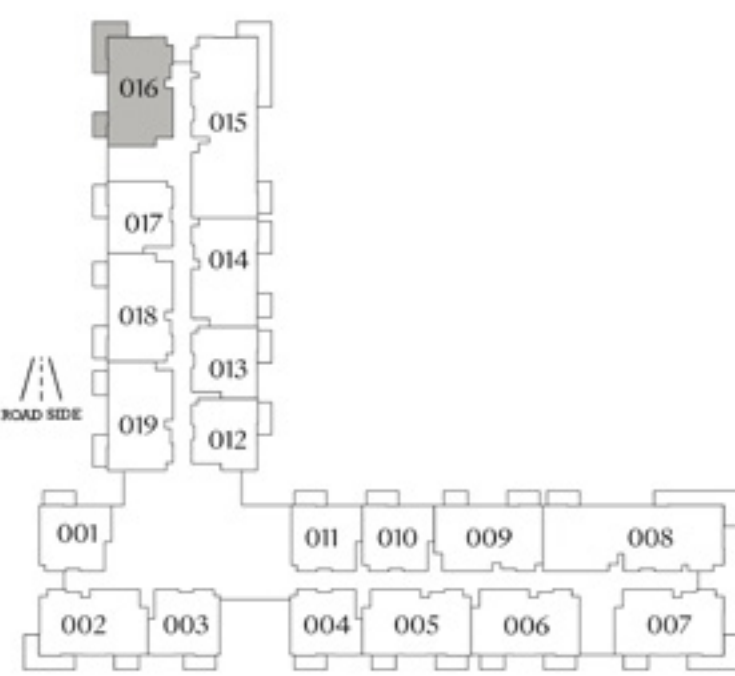
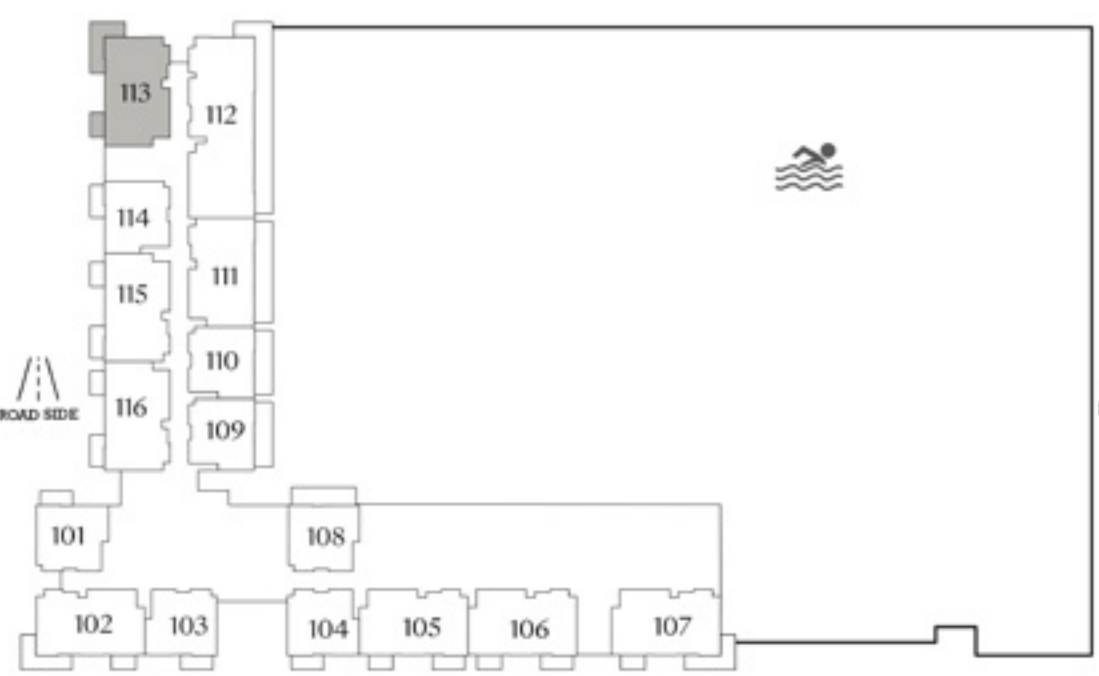
| | | |
|--------------|----------------|--------------|
| SUITE AREA | 938.11 SQ.FT. | 87.15 SQ.M. |
| BALCONY AREA | 209.04 SQ.FT. | 19.42 SQ.M. |
| TOTAL AREA | 1147.15 SQ.FT. | 106.57 SQ.M. |



KEY SECTION



KEYPLAN



PODIUM LEVEL

LEVEL 1

LEVELS 2 TO 16

FLOOR PLAN 1. All dimensions are in imperial and metric, and measured from finish to finish excluding construction tolerances. 2. All materials, dimensions, and drawings are approximate only. 3. Information is subject to change without notice, at developer's absolute discretion. 4. Actual area may vary from the stated area. 5. Drawings not to scale. 6. All images used are for illustrative purposes only and do not represent the actual size, features, specifications, fittings, and furnishings. 7. The developer reserves the right to make revisions / alterations, at it's absolute discretion, without any liability whatsoever.

PALACE
RESIDENCES
HILLSIDE

DUBAI HILLS ESTATE

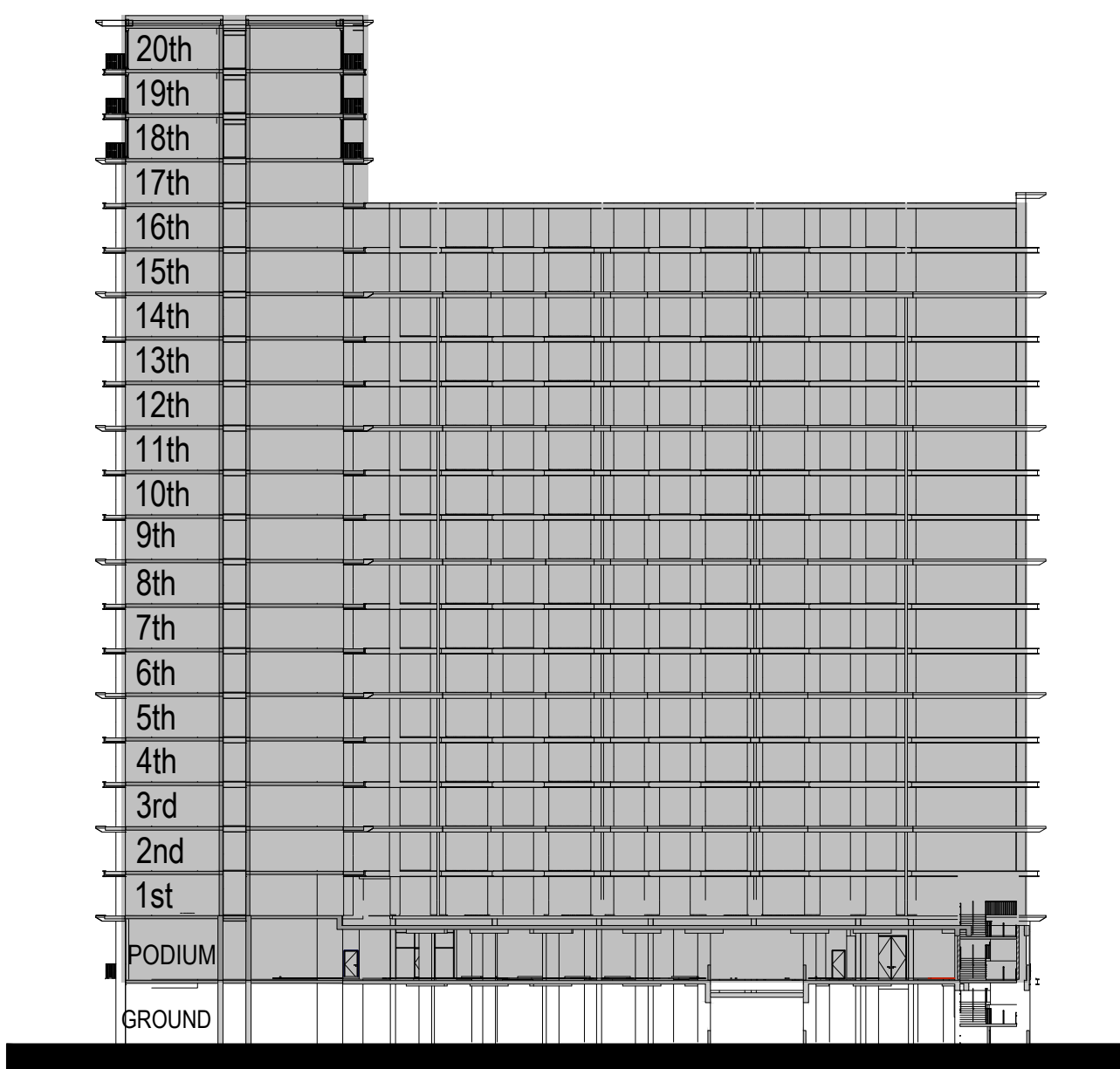
2 BEDROOM TYPE C

| | UNIT P02 | |
|--------------|----------------|--------------|
| SUITE AREA | 930.00 SQ.FT. | 86.40 SQ.M. |
| BALCONY AREA | 208.93 SQ.FT. | 19.41 SQ.M. |
| TOTAL AREA | 1138.93 SQ.FT. | 105.81 SQ.M. |

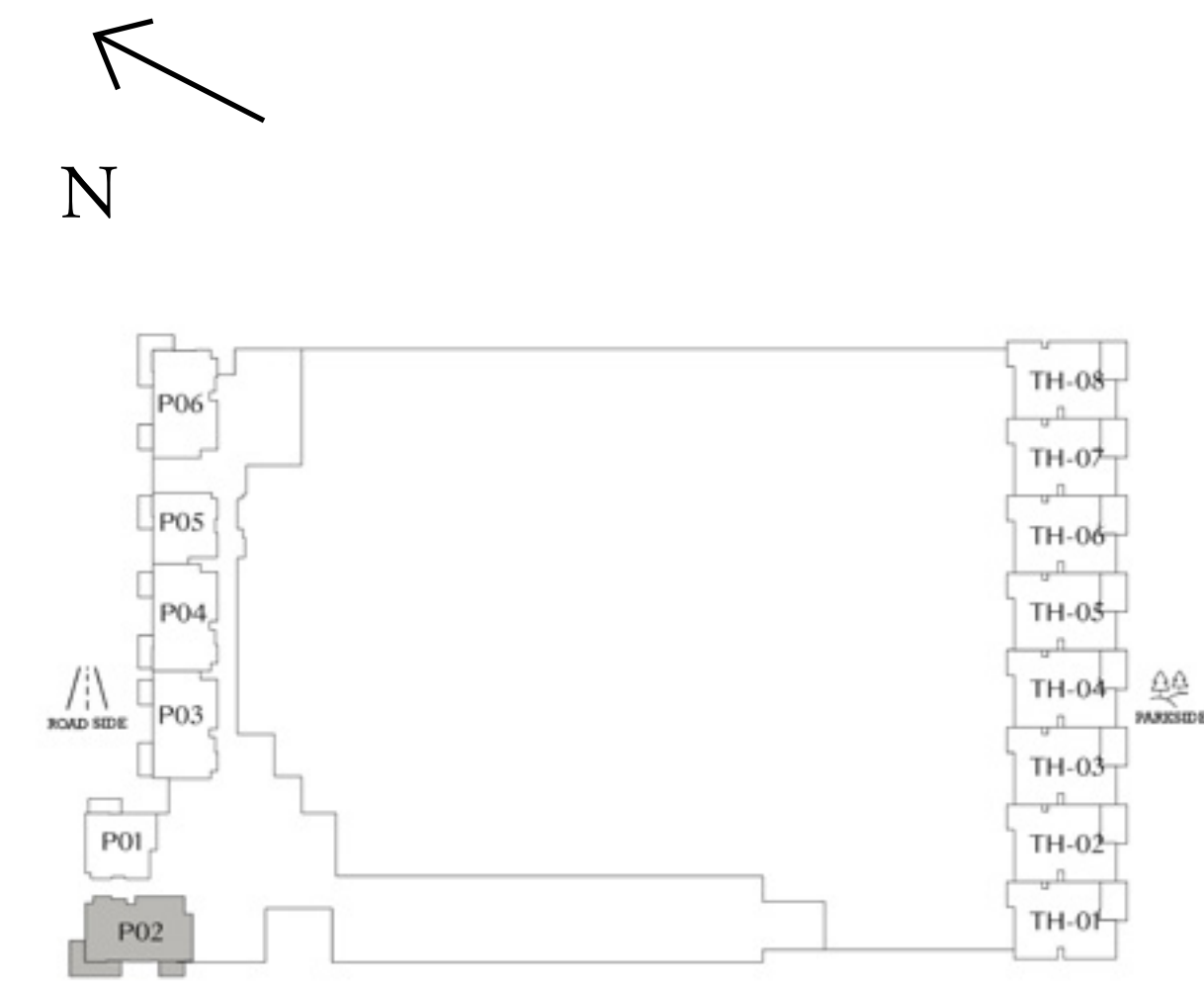
| | | |
|--|----------------|--------------|
| UNIT 102, 202, 302, 402, 502, 602, 702, 802, 902, 1002, 1102, 1202, 1302, 1402, 1502, 1602, 1702, 1802, 1902, 2002 | | |
| SUITE AREA | 937.85 SQ.FT. | 87.13 SQ.M. |
| BALCONY AREA | 208.95 SQ.FT. | 19.41 SQ.M. |
| TOTAL AREA | 1146.81 SQ.FT. | 106.54 SQ.M. |



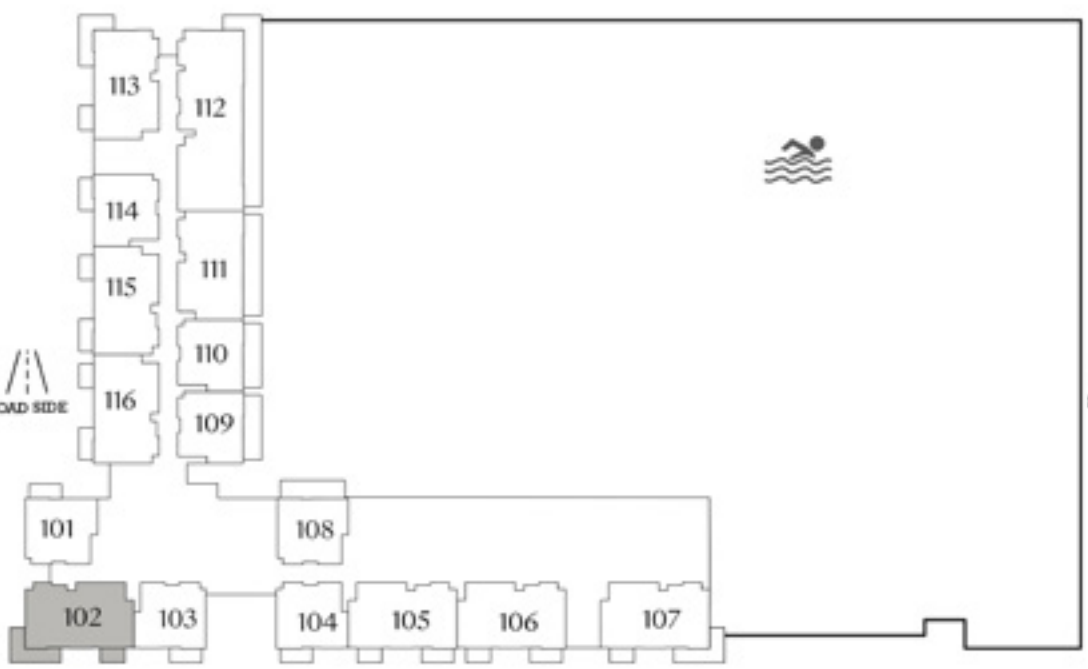
KEY SECTION



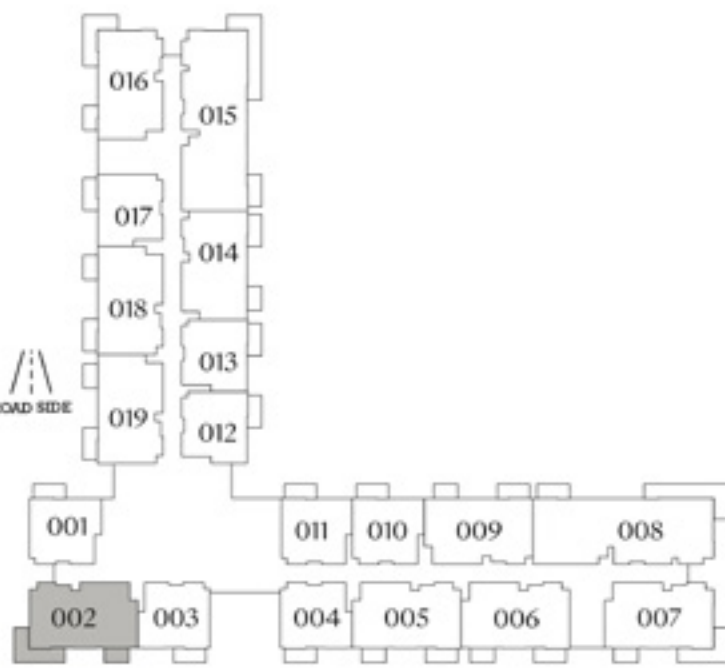
KEYPLAN



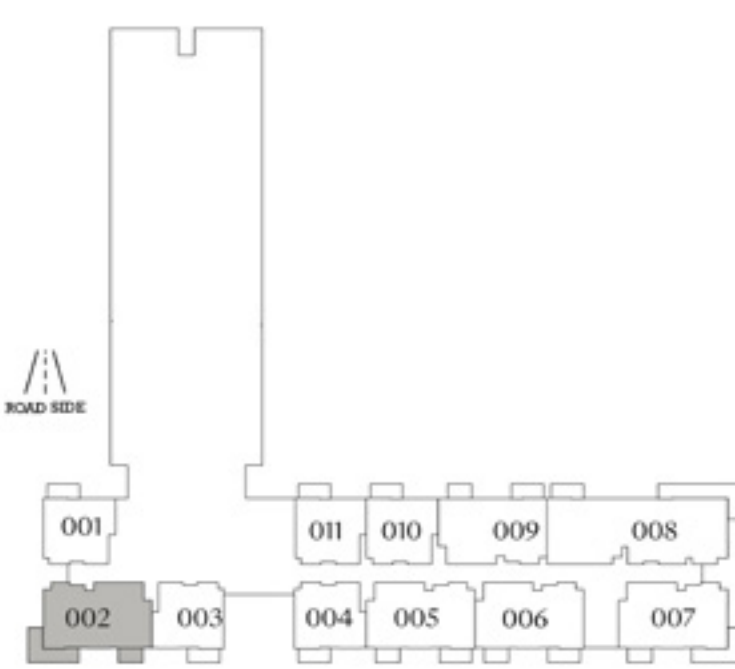
PODIUM LEVEL



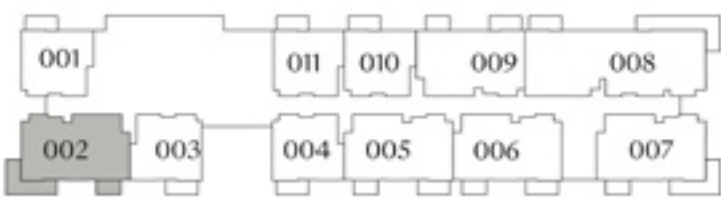
LEVEL 1



LEVELS 2 TO 16



LEVEL 17



LEVELS 18-20

FLOOR PLAN 1. All dimensions are in imperial and metric, and measured from finish to finish excluding construction tolerances. 2. All materials, dimensions, and drawings are approximate only. 3. Information is subject to change without notice, at developer's absolute discretion. 4. Actual area may vary from the stated area. 5. Drawings not to scale. 6. All images used are for illustrative purposes only and do not represent the actual size, features, specifications, fittings, and furnishings. 7. The developer reserves the right to make revisions / alterations, at it's absolute discretion, without any liability whatsoever.

PALACE
RESIDENCES
HILLSIDE

DUBAI HILLS ESTATE

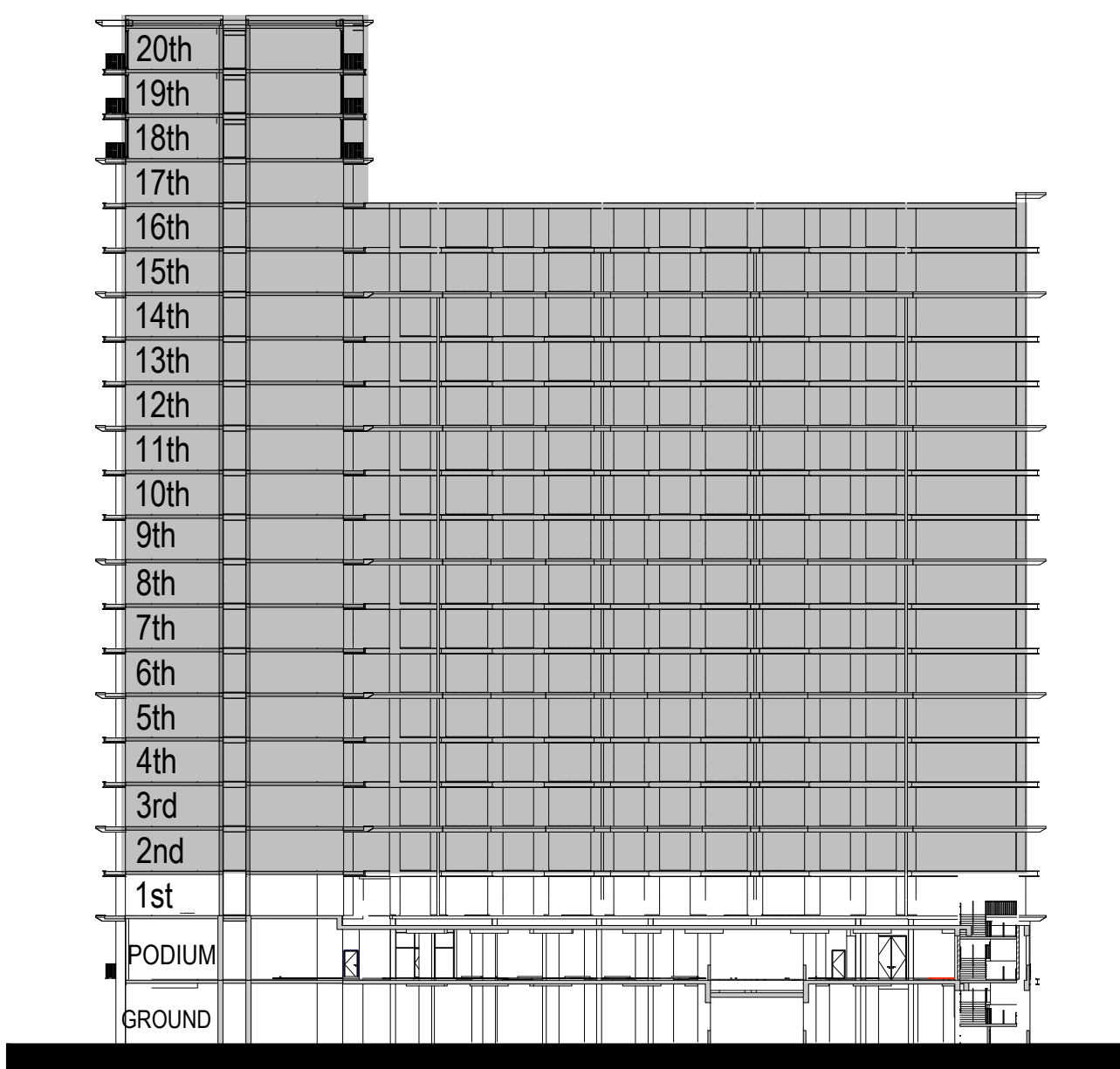
3 BEDROOM TYPE A

UNIT 208, 308, 408, 508, 608, 708, 808, 908, 1008, 1108, 1208, 1308, 1408, 1508, 1608, 1708, 1808, 1908, 2008

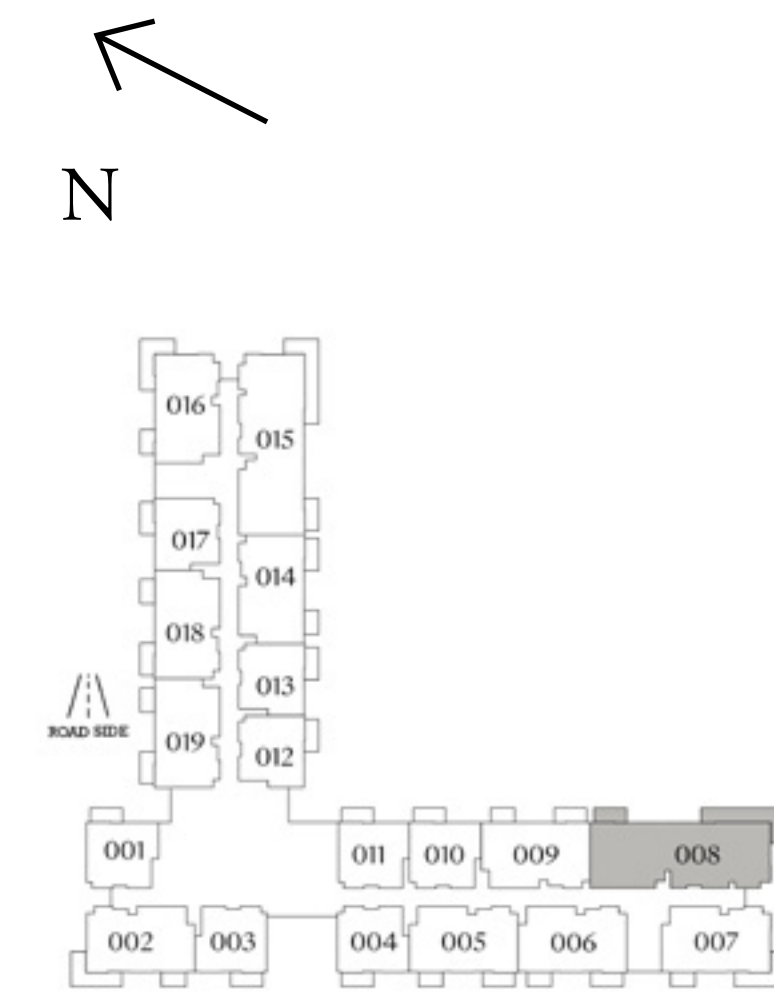
| | | |
|--------------|----------------|--------------|
| SUITE AREA | 1587.46 SQ.FT. | 147.48 SQ.M. |
| BALCONY AREA | 294.59 SQ.FT. | 27.37 SQ.M. |
| TOTAL AREA | 1882.05 SQ.FT. | 174.85 SQ.M. |



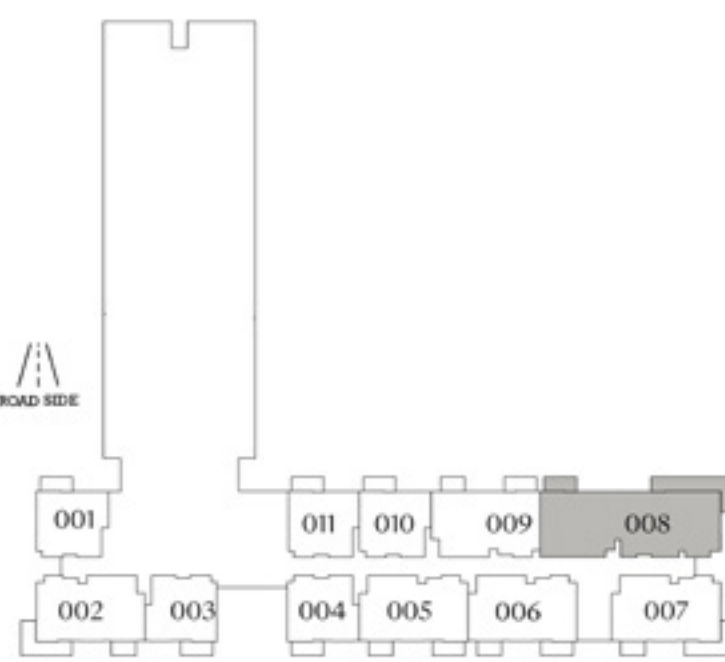
KEY SECTION



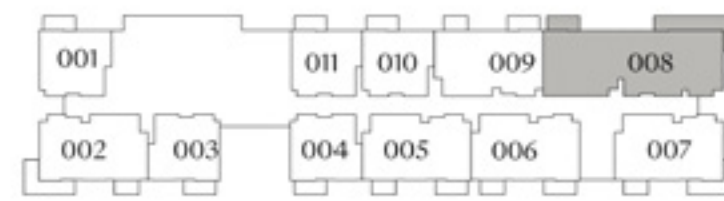
KEYPLAN



LEVELS 2 TO 16



LEVEL 17



LEVELS 18-20

FLOOR PLAN 1. All dimensions are in imperial and metric, and measured from finish to finish excluding construction tolerances. 2. All materials, dimensions, and drawings are approximate only. 3. Information is subject to change without notice, at developer's absolute discretion. 4. Actual area may vary from the stated area. 5. Drawings not to scale. 6. All images used are for illustrative purposes only and do not represent the actual size, features, specifications, fittings, and furnishings. 7. The developer reserves the right to make revisions / alterations, at it's absolute discretion, without any liability whatsoever.

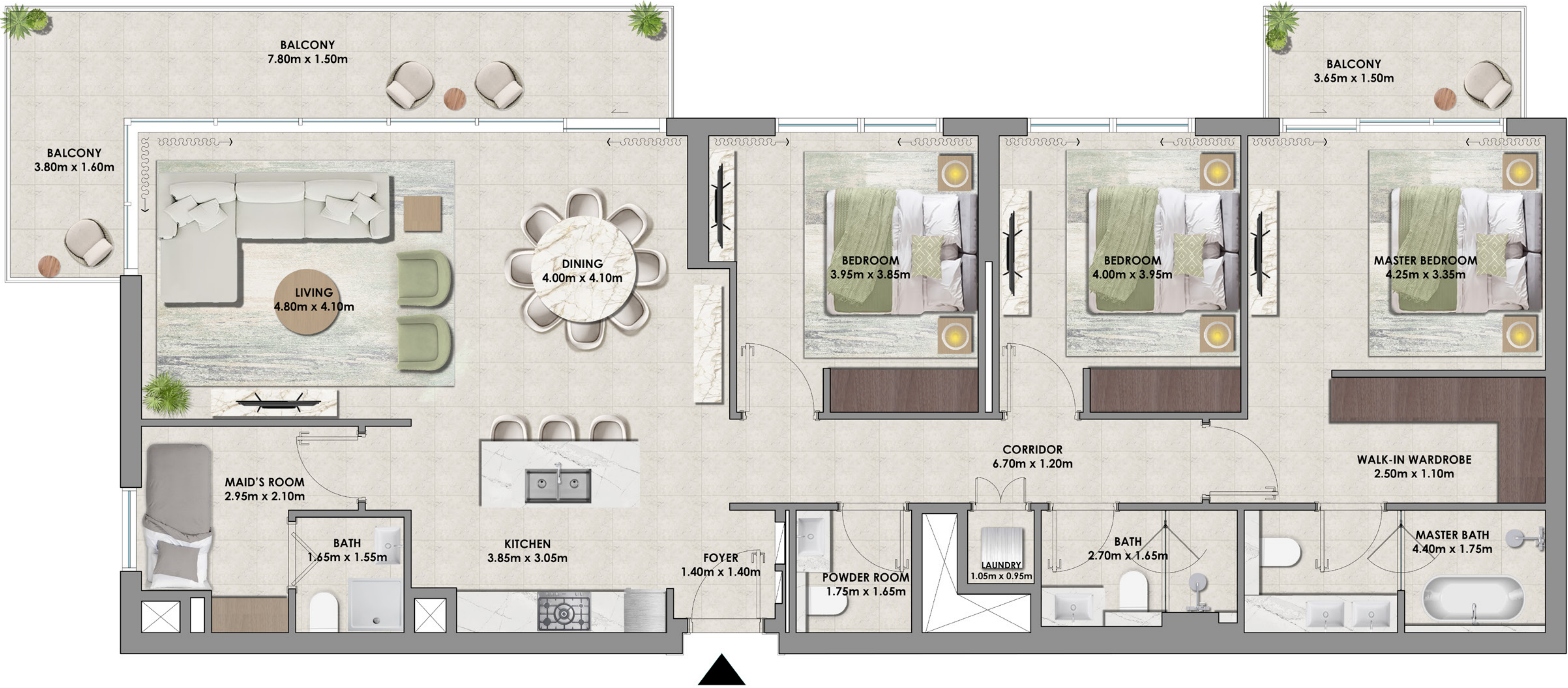
PALACE
RESIDENCES
HILLSIDE

DUBAI HILLS ESTATE

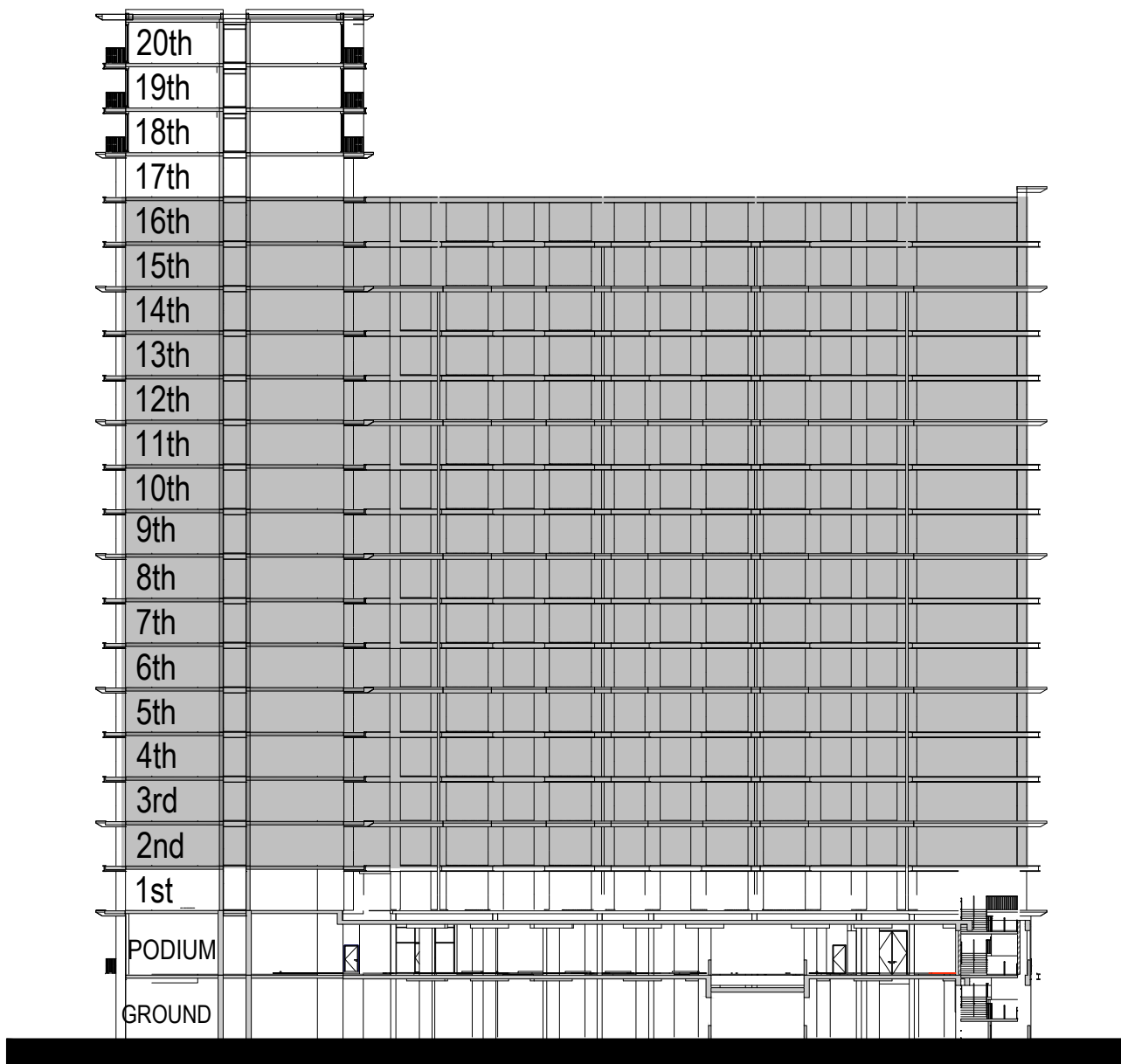
3 BEDROOM TYPE A1

UNIT 215, 315, 415, 515, 615, 715, 815, 915, 1015, 1115, 1215,
1315, 1415, 1515, 1615

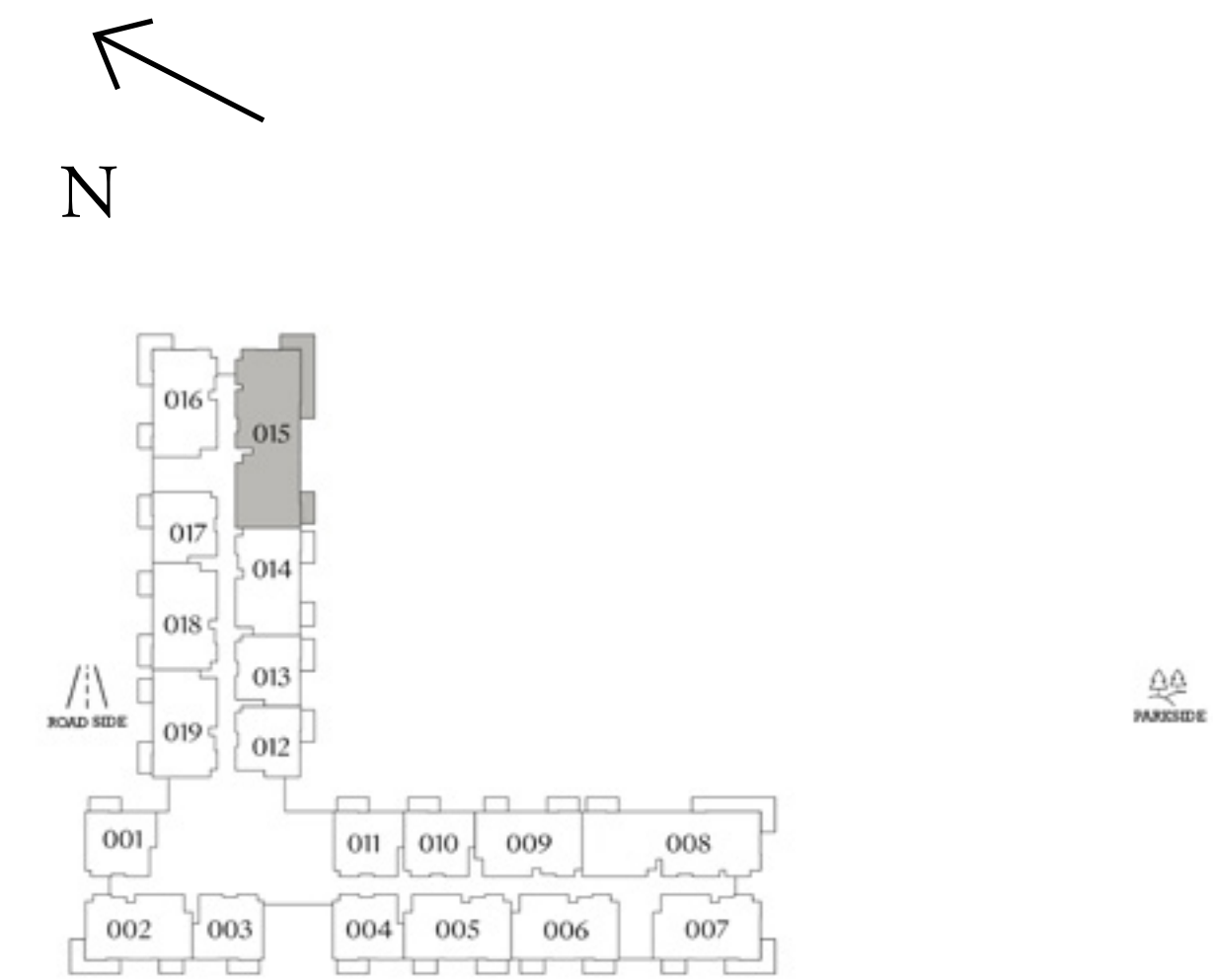
| | | |
|--------------|----------------|--------------|
| SUITE AREA | 1587.46 SQ.FT. | 147.48 SQ.M. |
| BALCONY AREA | 294.61 SQ.FT. | 27.37 SQ.M. |
| TOTAL AREA | 1882.07 SQ.FT. | 174.85 SQ.M. |



KEY SECTION



KEYPLAN



LEVELS 2 TO 16

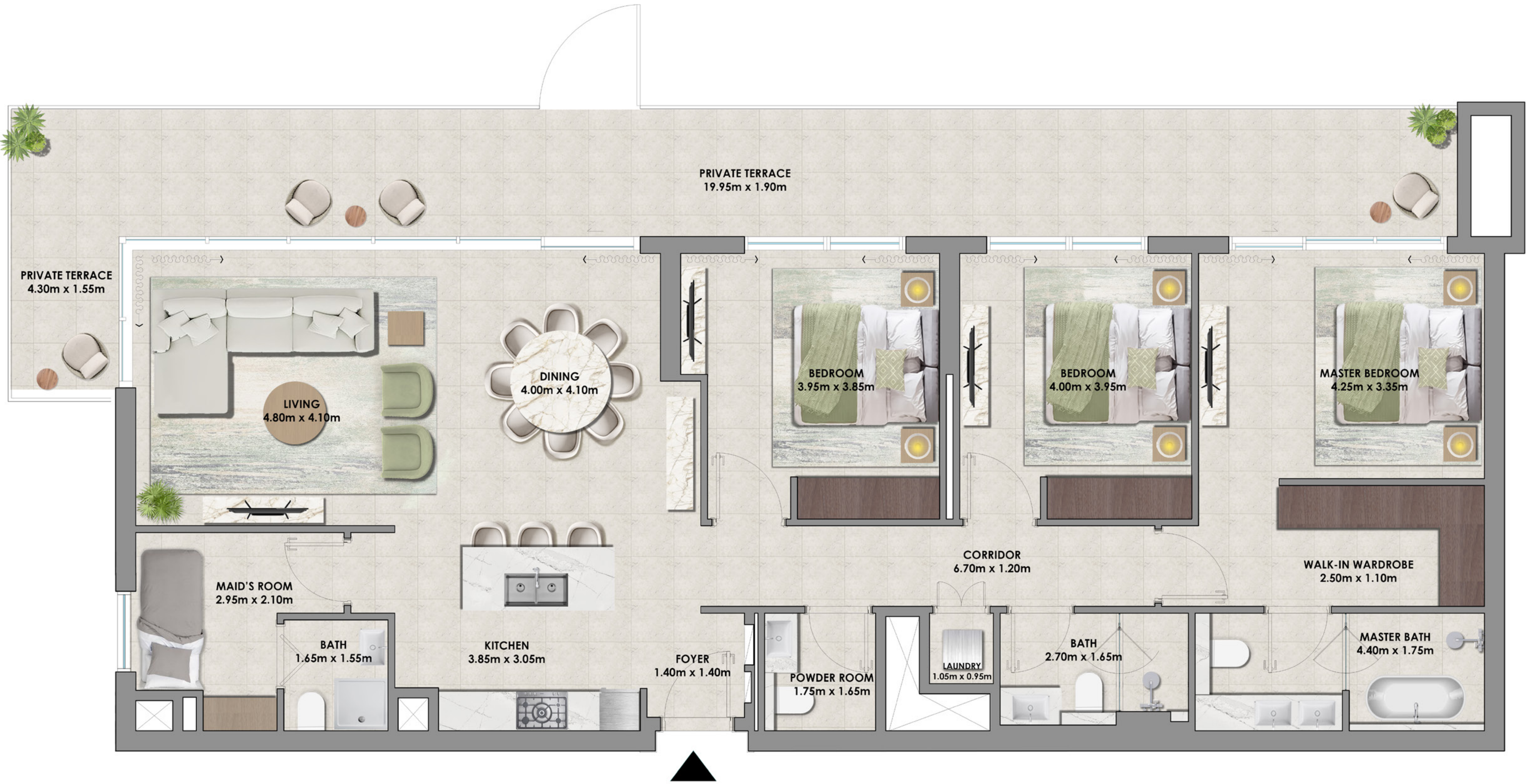
FLOOR PLAN 1. All dimensions are in imperial and metric, and measured from finish to finish excluding construction tolerances. 2. All materials, dimensions, and drawings are approximate only. 3. Information is subject to change without notice, at developer's absolute discretion. 4. Actual area may vary from the stated area. 5. Drawings not to scale. 6. All images used are for illustrative purposes only and do not represent the actual size, features, specifications, fittings, and furnishings. 7. The developer reserves the right to make revisions / alterations, at it's absolute discretion, without any liability whatsoever.

PALACE
RESIDENCES
HILLSIDE

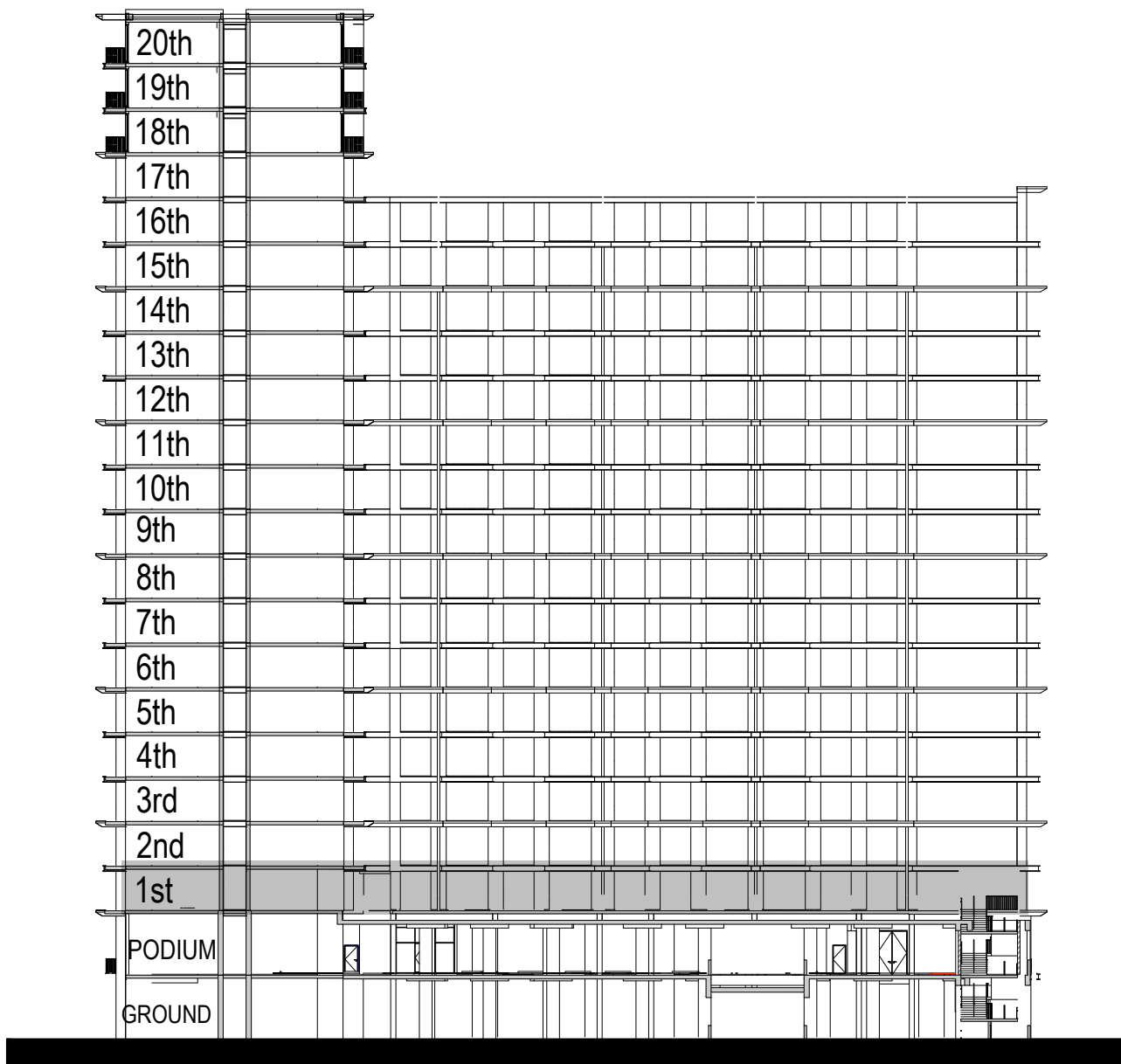
DUBAI HILLS ESTATE

3 BEDROOM TYPE A2

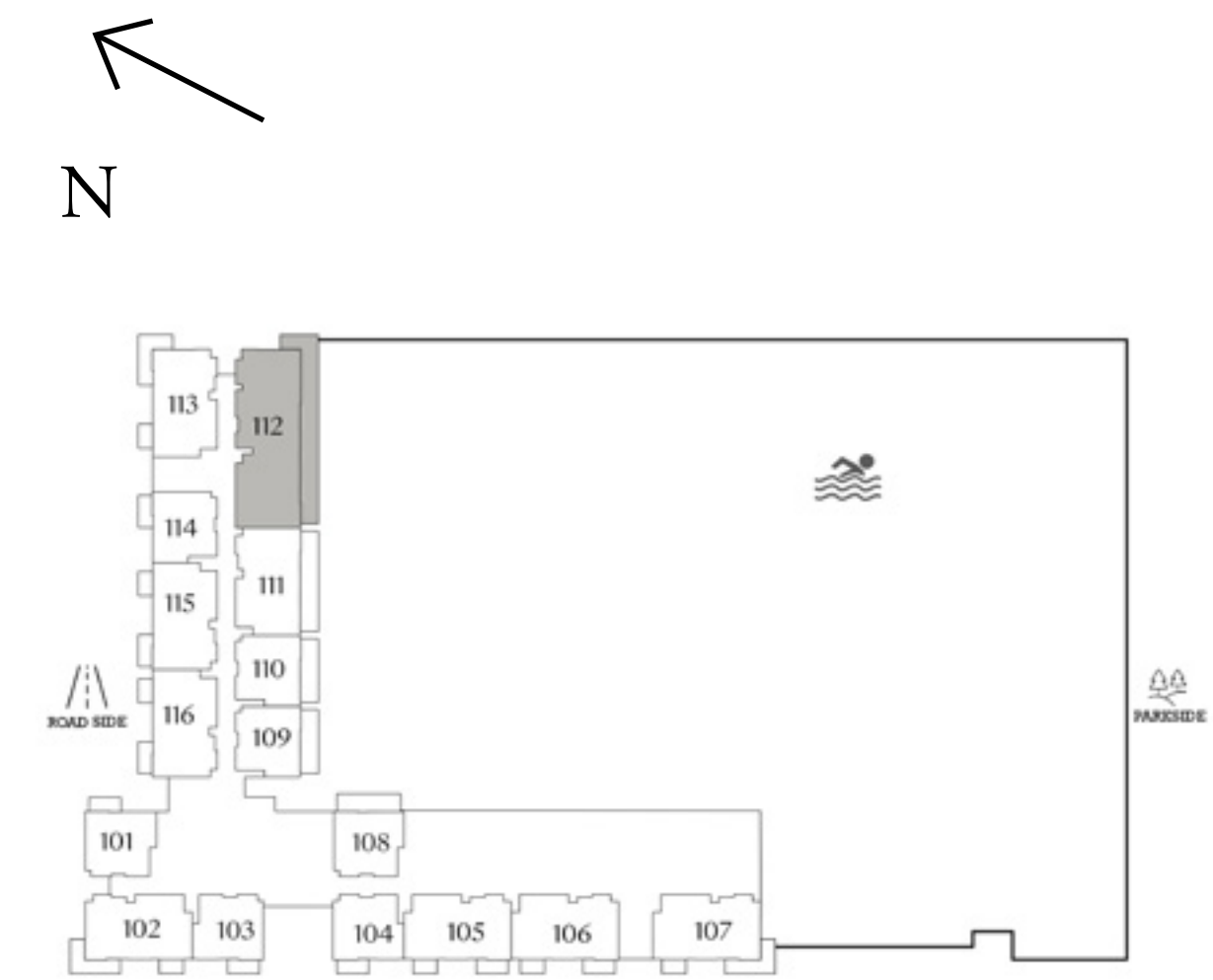
| | UNIT 112 | |
|--------------|----------------|--------------|
| SUITE AREA | 1587.35 SQ.FT. | 147.47 SQ.M. |
| BALCONY AREA | 522.80 SQ.FT. | 48.57 SQ.M. |
| TOTAL AREA | 2110.15 SQ.FT. | 196.04 SQ.M. |



KEY SECTION



KEYPLAN



LEVEL 1

FLOOR PLAN 1. All dimensions are in imperial and metric, and measured from finish to finish excluding construction tolerances. 2. All materials, dimensions, and drawings are approximate only. 3. Information is subject to change without notice, at developer's absolute discretion. 4. Actual area may vary from the stated area. 5. Drawings not to scale. 6. All images used are for illustrative purposes only and do not represent the actual size, features, specifications, fittings, and furnishings. 7. The developer reserves the right to make revisions / alterations, at it's absolute discretion, without any liability whatsoever.

PALACE
RESIDENCES
HILLSIDE

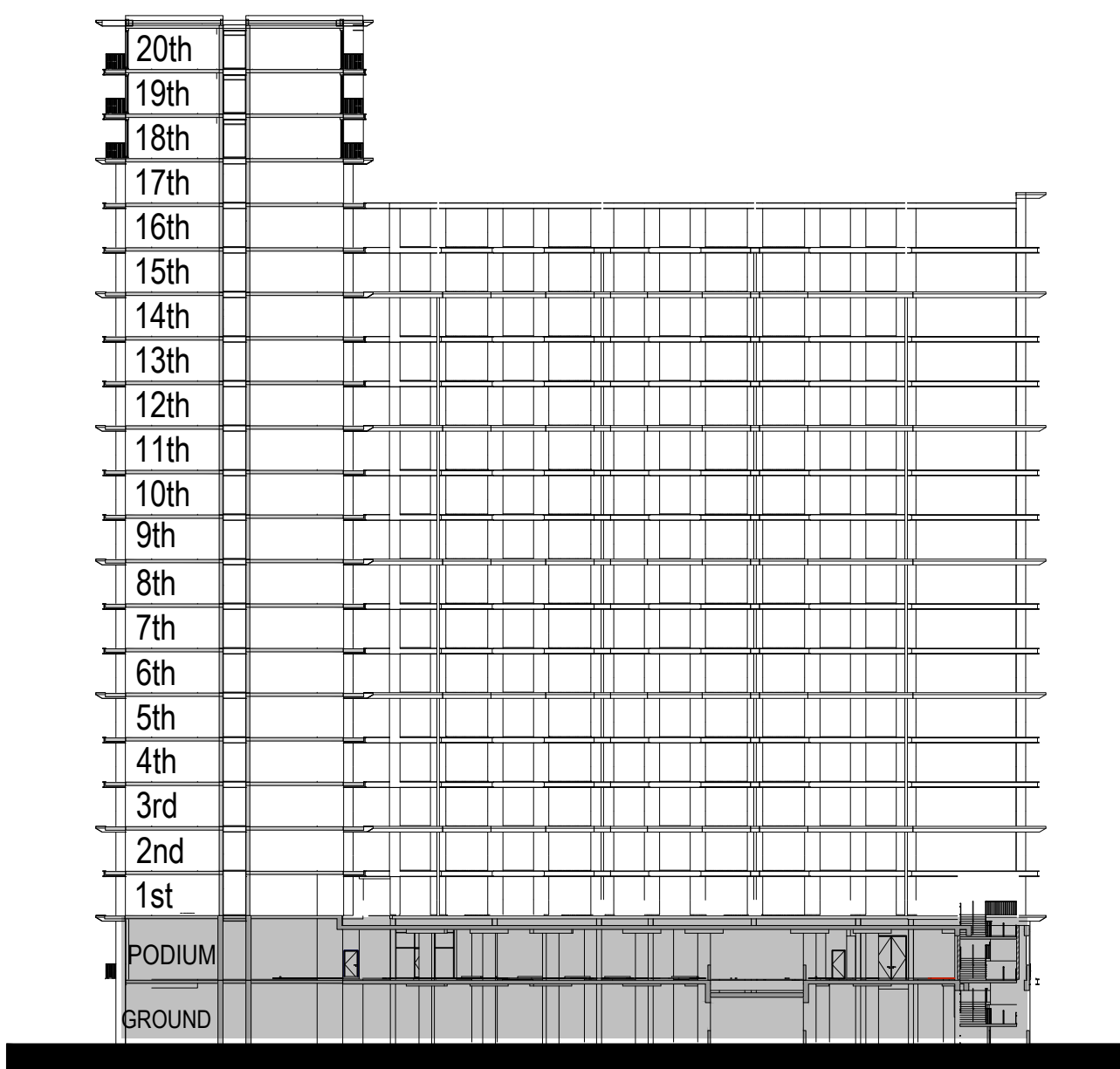
DUBAI HILLS ESTATE

TOWNHOUSE

UNIT TH-01, TH-02, TH-03, TH-04, TH-05, TH-06, TH-07, TH-08

| | | |
|--------------|----------------|--------------|
| SUITE AREA | 2193.82 SQ.FT. | 203.82 SQ.M. |
| BALCONY AREA | 428.32 SQ.FT. | 39.79 SQ.M. |
| TOTAL AREA | 2622.14 SQ.FT. | 243.61 SQ.M. |

KEY SECTION



KEYPLAN



GROUND LEVEL



LOWER LEVEL



UPPER LEVEL

FLOOR PLAN 1. All dimensions are in imperial and metric, and measured from finish to finish excluding construction tolerances. 2. All materials, dimensions, and drawings are approximate only. 3. Information is subject to change without notice, at developer's absolute discretion. 4. Actual area may vary from the stated area. 5. Drawings not to scale. 6. All images used are for illustrative purposes only and do not represent the actual size, features, specifications, fittings, and furnishings. 7. The developer reserves the right to make revisions / alterations, at it's absolute discretion, without any liability whatsoever.