

# SUKOON

BY NURI



SUKOON





## NURI: AN ENLIGHTENED TALE

Rooted in a legacy of sustainable and ethical development, Nuri was founded with a clear vision: to create a harmonious living environment that blends attainable luxury with thoughtful, responsible design. With a commitment to using high-quality, sustainable materials, Nuri aims to provide both investors and end-users with spaces that inspire well-being and elevate the living experience.

Headquartered in Dubai, Nuri's mission extends beyond just building homes—it is about cultivating holistic communities. The company focuses on creating living spaces that foster a sense of balance, comfort, and connection, while always prioritizing sustainability and the needs of its residents. By carefully selecting eco-friendly materials and ensuring a user-centric approach in every phase of development, Nuri continues to set new standards in thoughtful, sustainable luxury.



# MEET THE FOUNDERS



## HIS EXCELLENCY

### SHEIKH MOHAMMED BIN ABDULLA AL THANI

His Excellency Sheikh Mohammed Bin Abdulla Al Thani, widely known as Moe Al Thani, is a distinguished figure renowned for his remarkable achievements across real estate development, business leadership, and community-building initiatives.

#### A LEADER IN RESIDENTIAL AND COMMERCIAL DEVELOPMENT

Moe Al Thani's visionary approach to real estate development has positioned him as a pioneer in creating dynamic spaces that blend innovation, sustainability, and functionality. With extensive experience in developing residential and commercial properties, he has played a transformative role in shaping urban landscapes across the MENA region; particularly in the UAE and Qatar. His projects prioritize community-centric designs, cutting-edge technology integration, and sustainable construction practices to meet the demands of modern living and business operations.

#### ENTREPRENEURIAL EXCELLENCE

In addition to his accomplishments in real estate, Moe Al Thani is an accomplished entrepreneur and investor with over 20 years of experience across diverse industries. His leadership includes founding and chairing innovative companies such as **Musafir.com** and **High Camp Holding**. His ability to identify opportunities and foster growth has significantly contributed to the success of various ventures in sectors like tourism, hospitality, technology and real estate.

#### NOTABLE ROLES AND CONTRIBUTIONS

Sheikh Mohammed has held several key leadership positions that reflect his multifaceted expertise:

- Chairman of **Musafir.com**, a leading travel technology platform.
- Board Member of **Air Arabia**, the first and largest low-cost carrier in the Middle East and North Africa.
- Deputy Chairman of **Sharjah Golf and Shooting Club**.
- Founder and leader of successful ventures such as Sharjah Paintball Park, Al Nawras Hospitality, and Tamween Catering.

#### COMMITMENT TO EXCELLENCE AND SUSTAINABILITY

As a developer, Moe Al Thani emphasizes sustainable design principles and cutting-edge innovation in all his projects. His focus on creating world-class commercial and residential spaces aligns with his broader vision of fostering thriving communities and economic growth.





## SACHIN GADOYA

Sachin Gadoya is the Co-Founder and CEO of Musafir.com, the UAE's premier travel management company. With a strategic focus on innovation, business development, and partnerships, Sachin has been instrumental in revolutionizing the region's travel industry.

### PIONEERING LEADERSHIP IN THE TRAVEL INDUSTRY

Driven by a passion for technology and entrepreneurship, Sachin co-founded Musafir.com, the UAE's first online travel agency. Under his visionary leadership, the company has grown into a leading player in the travel sector, expanding its footprint across India, Qatar, and Saudi Arabia.

Headquartered in DIFC, Dubai, Musafir.com operates multiple branches across the UAE and is renowned for delivering seamless travel experiences, powered by cutting-edge technology and exceptional service.

### ENTREPRENEURSHIP BEYOND TRAVEL

In addition to his role at Musafir.com, Sachin serves as the Managing Director of Gadoya Holdings, a diversified business conglomerate with 14 companies operating across sectors such as electrical, plastics, engineering, real estate, and sports. His strategic oversight has positioned Gadoya Holdings as a trusted name in these industries.

### COMMITMENT TO MENTORSHIP AND INNOVATION

A firm believer in nurturing the next generation of innovators, Sachin actively mentors aspiring entrepreneurs and invests in early-stage tech startups. His efforts reflect a commitment to fostering innovation and entrepreneurship within the region and beyond.



# LOCATION, LOCATION, LOCATION.

Dubai is widely recognized as a global hub for commerce, arts, culture, and sports in the Middle East. Amidst the city's fast-paced rhythm and dynamic energy, the neighborhood of Meydan stands as a tranquil oasis at its very heart. Just minutes away from iconic landmarks such as the Burj Khalifa, DIFC, and Jumeirah, Meydan combines the best of both worlds: the serene comforts of suburban living and the vibrant pulse of city life.

Meydan is home to the world-renowned Dubai World Cup, the most prestigious and expensive horse race globally. The area also boasts the luxurious Meydan Hotel, the famed Godolphin Stables, and a wealth of lifestyle amenities, including **Dubai Dive**, **DxBike**, and **Wellfit**. Shopping enthusiasts will enjoy the upcoming Meydan One Mall, a major retail and entertainment destination set to elevate the area's offerings.

For families, Meydan offers access to top-tier educational institutions, including the North London Collegiate School, Hartland School, Le Lycée Libanais Francophone Privé Meydan and Kings Meydan – all highly rated by the Knowledge and Human Development Authority (KHDA), with many receiving 'Very Good' and 'Outstanding' ratings.



SUKOON  
BY NURI

NEIGHBOURHOOD  
PARK

MEYDAN  
HOTEL

MEYDAN  
RACECOURSE

MEYDAN  
GOLF COURSE

WELLFIT

DXBIKE

DEEP DIVE  
DUBAI

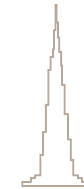








14 MINUTES  
TO BURJ KHALIFA



9 MINUTES  
TO DIFC



9 MINUTES  
TO SAFA PARK



16 MINUTES  
TO DUBAI INTERNATIONAL  
AIRPORT



2 MINUTES  
TO MEYDAN BIKING &  
RUNNING TRACK





# SUKOON

## BY NURI

### ESCAPE THE CITY AND WALK INTO LIFE

Bergman Design House, an award-winning design London-based firm, is celebrated for its innovative yet sustainable approach to interior design. Known for thinking outside the box, they infuse zen, calm, and a timeless feel into every project.

Sukoon by Nuri's interiors is being artfully crafted by Bergman design house, celebrating sophisticated, functional interiors. With meticulous attention to detail and exceptional craftsmanship. Bergman excels at harmonising aesthetics with practicality, delivering spaces that resonate with the unique tastes and lifestyles of Sukoon residents.

Their extensive portfolio spans residential, commercial, and hospitality projects, showcasing a remarkable ability to balance modern design trends with classical elegance. With a profound understanding of space, materials, and color, Bergman creates tailored environments for Sukoon by Nuri residents that not only captivate the eye but also enhance daily living.

Whether catering to a young professional or a growing family, Bergman are dedicated to producing bespoke interiors that are both functional and visually stunning—bringing out the very best in each space.

BERGMAN







NUR  
SUKOON

1 BEDROOM

from 72sqm

2 BEDROOM

from 108sqm

3 BEDROOM PENTHOUSE

from 430sqm

SWIMMING POOL

on Terrace

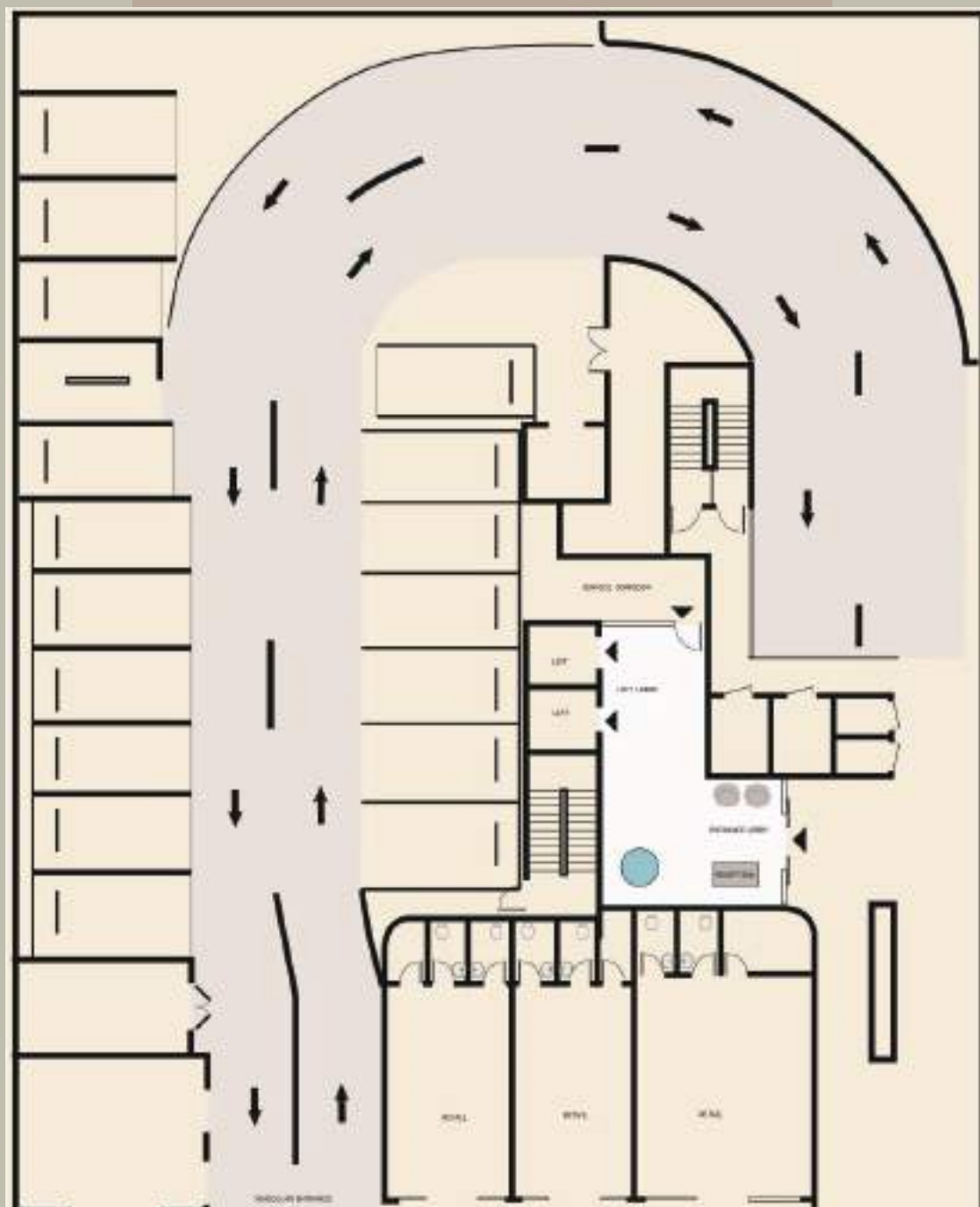
RETAIL

from 44sqm

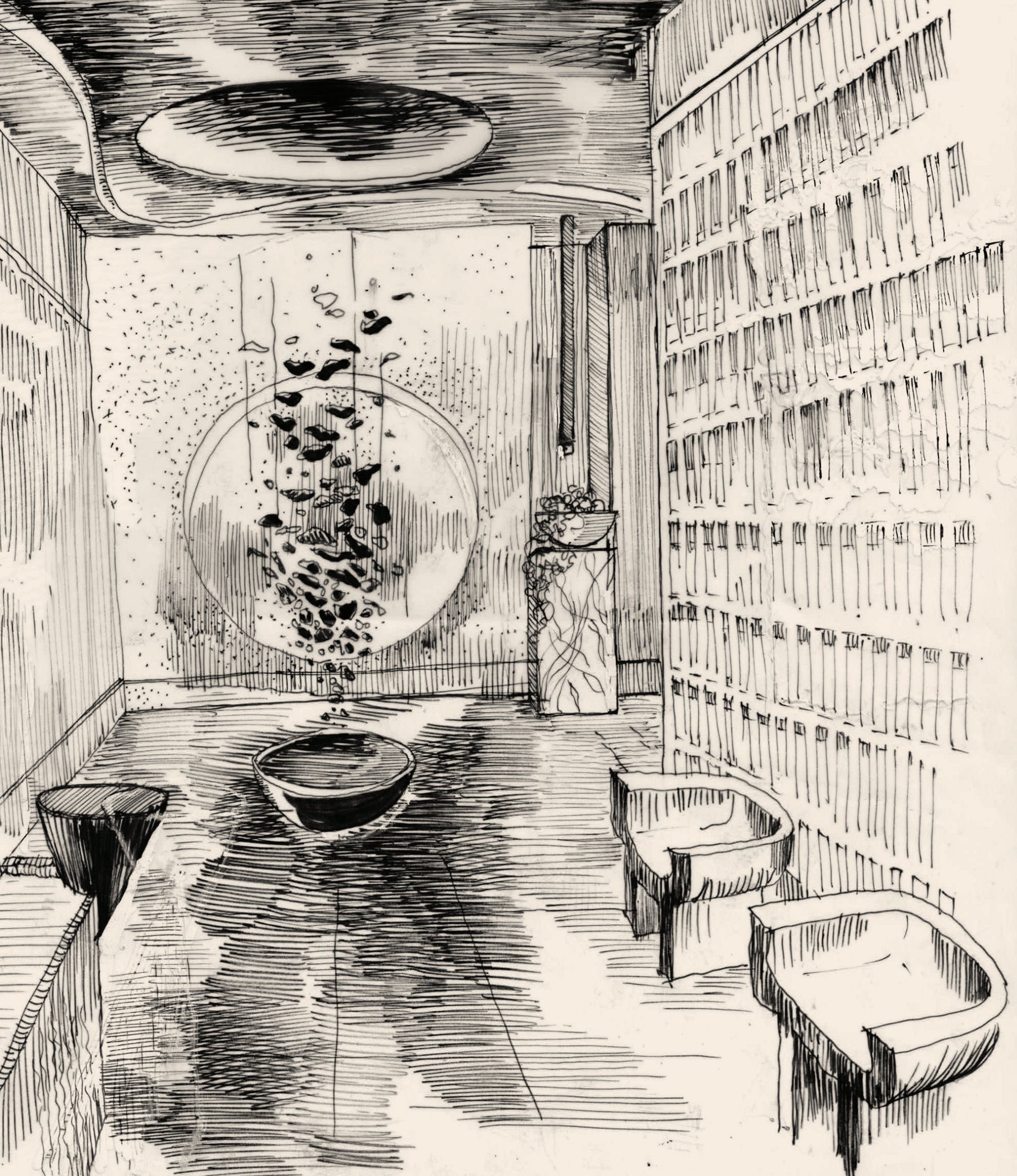
BOUTIQUE 44.000SQF  
IN THE HEART OF MEYDAN











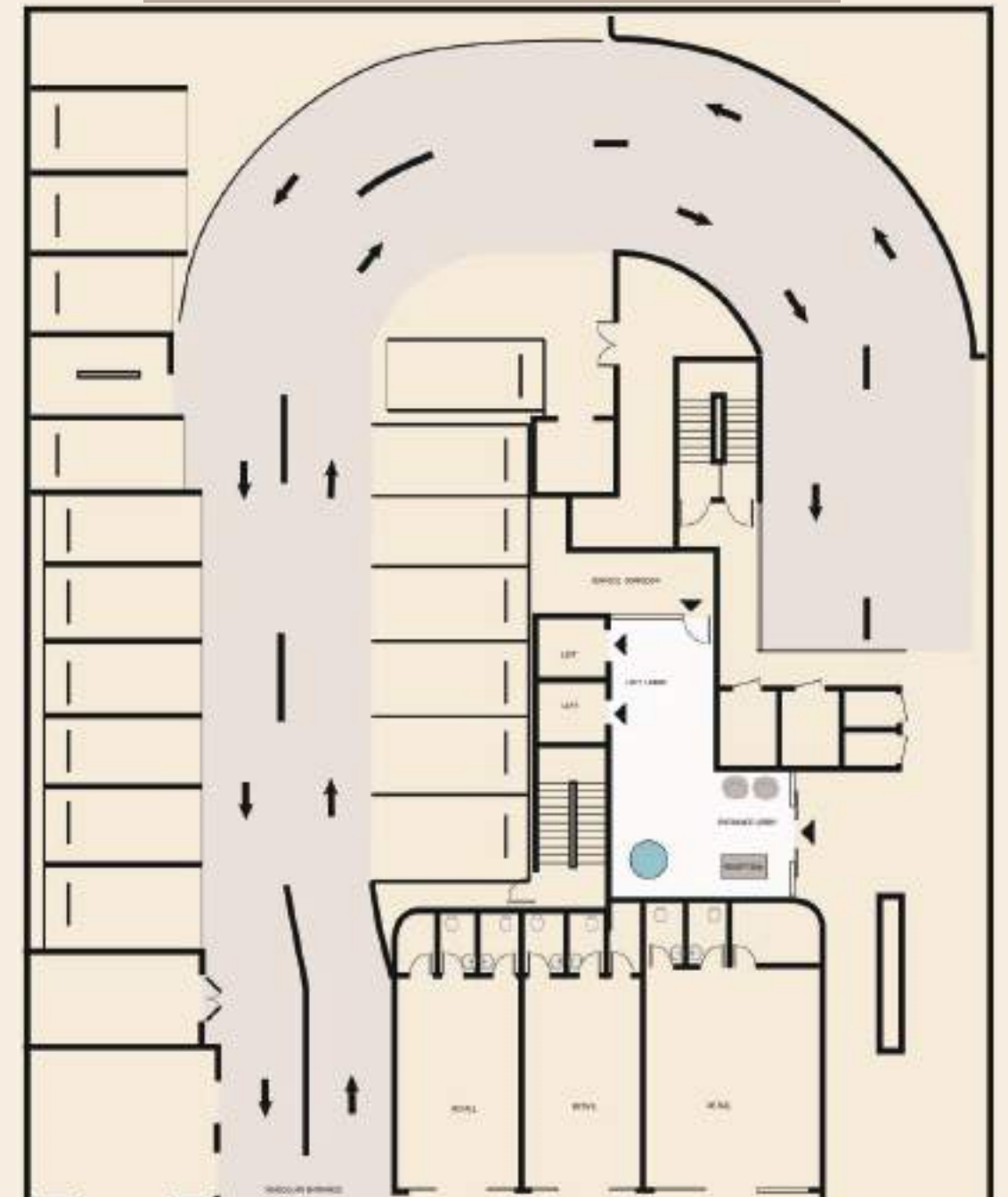
RECEPTION





1. Tile Floor
2. Walls
3. Feature wall with Plinth
4. Painted Walls and Arch
5. Feature timber Wall
6. Reception Desk
7. Stone Plinth
8. Reception bronze metal detail



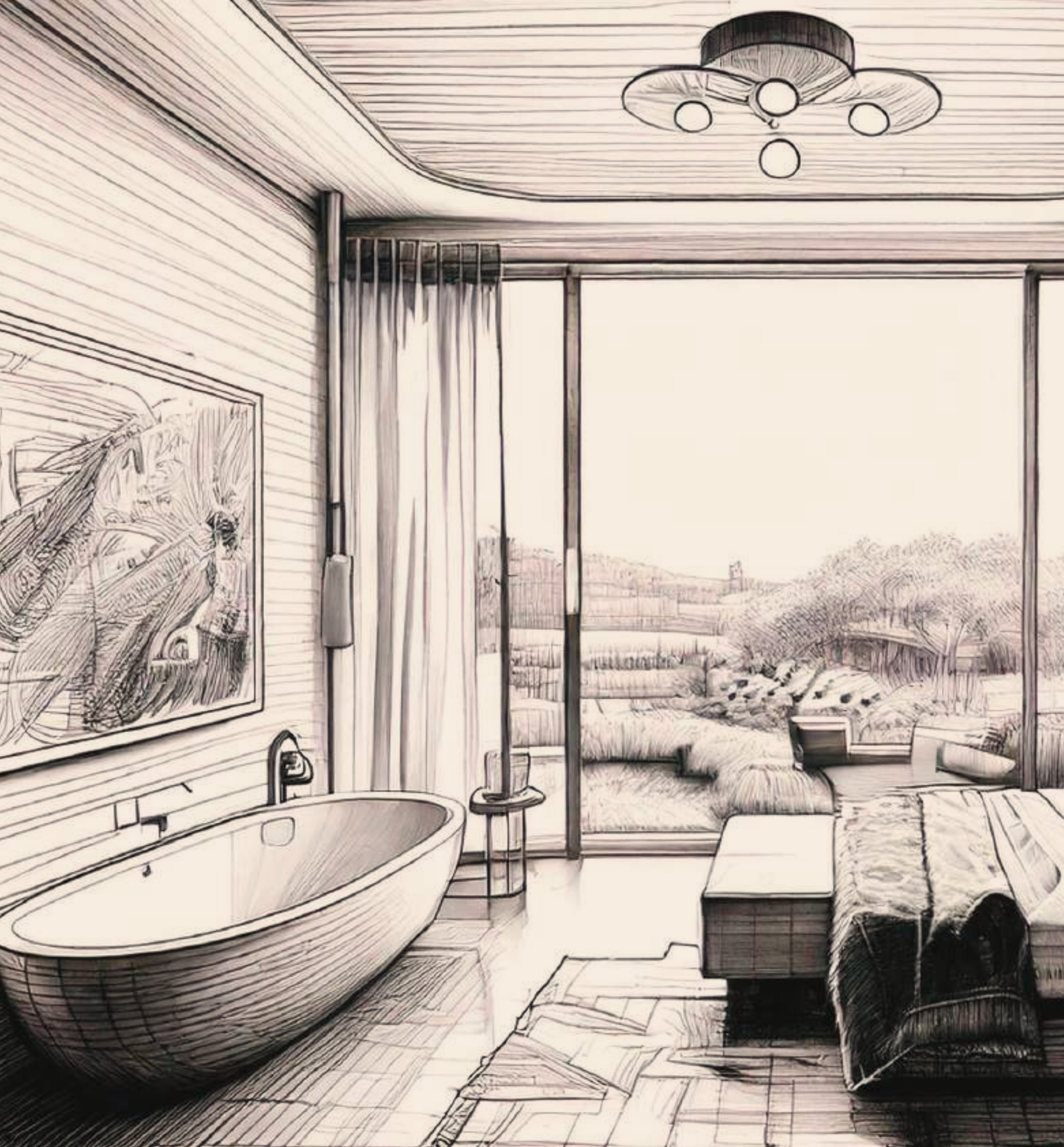






ONE BEDROOM



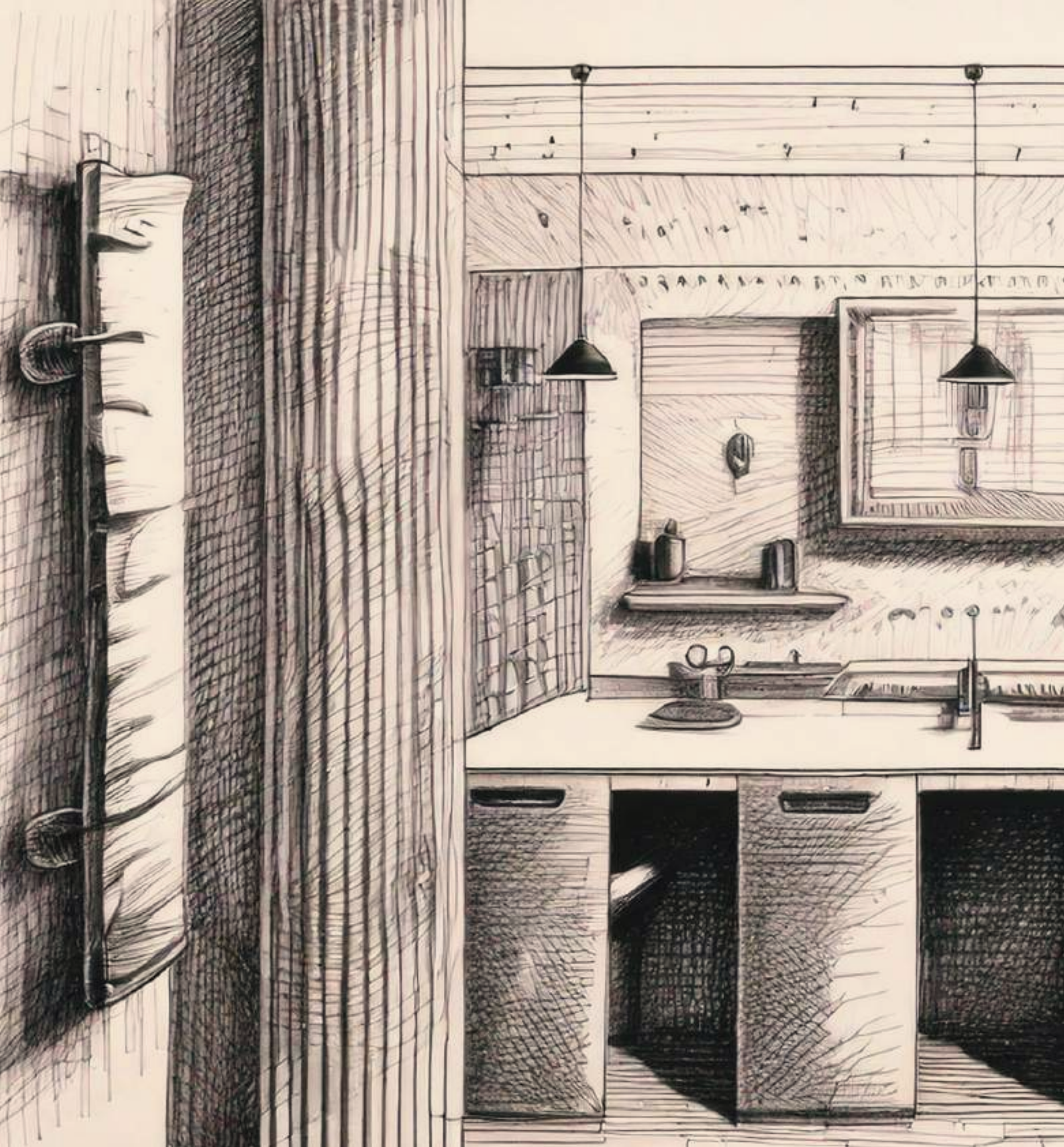


TWO BEDROOM









PENTHOUSE





1. Sofa Cushions
2. Armchair timber frame
3. General metal finish in bronze
4. Armchair upholstery
5. Sofa Upholstery and cushions
6. Coffee table top
7. Flooring
8. Skirting
9. Rug
10. Sheers
11. Curtains
12. Plaster walls and ceiling

\* Note: Kitchen appliances crafted by Miele









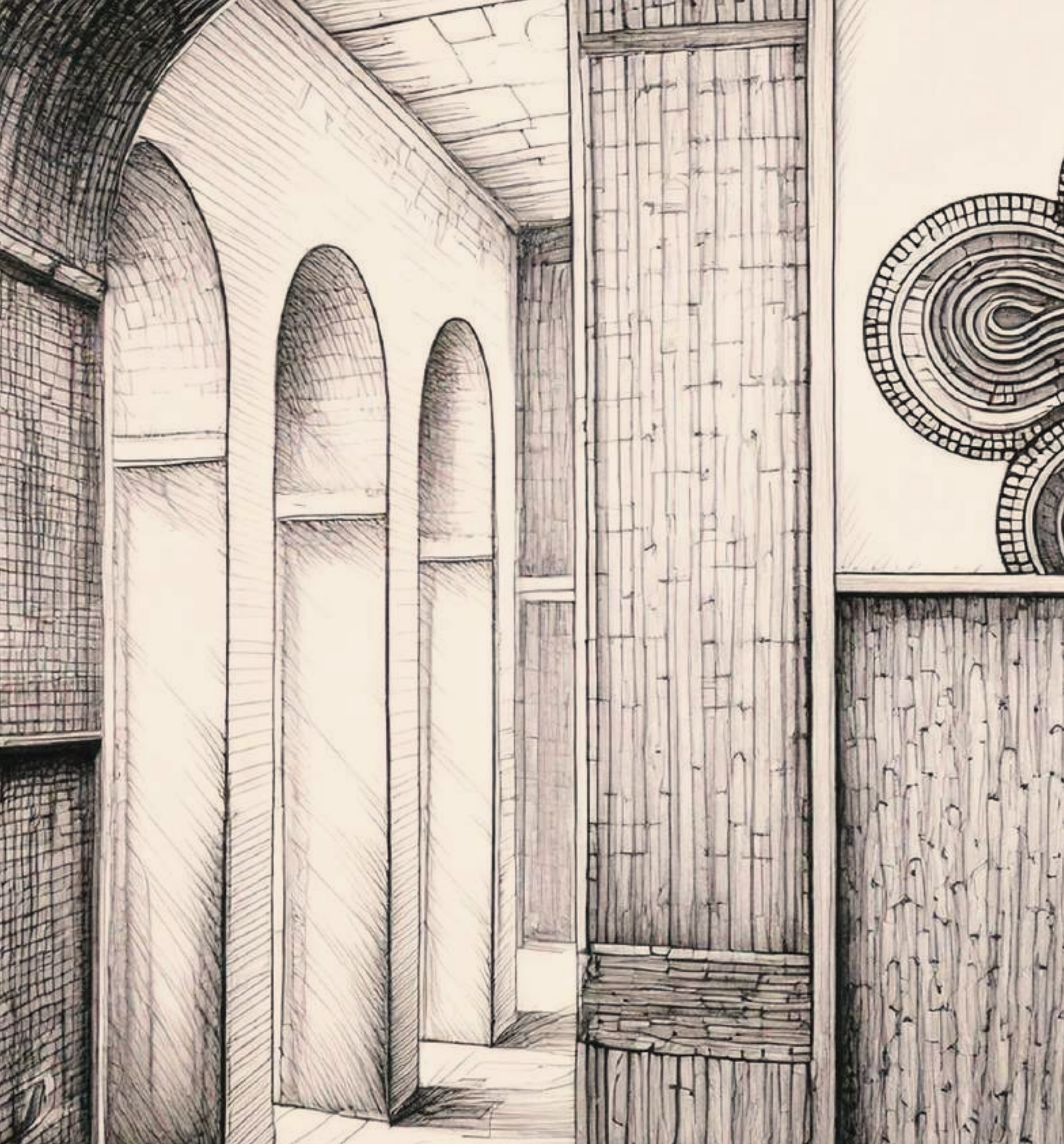










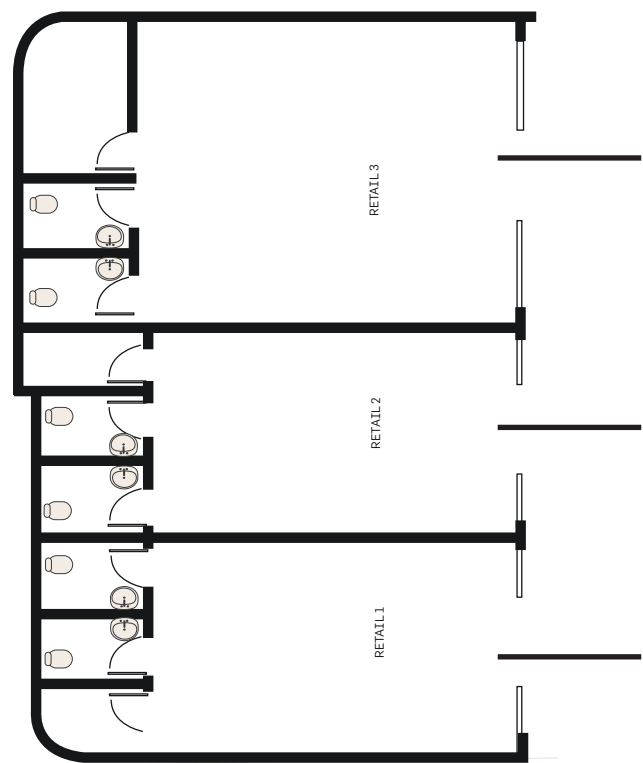
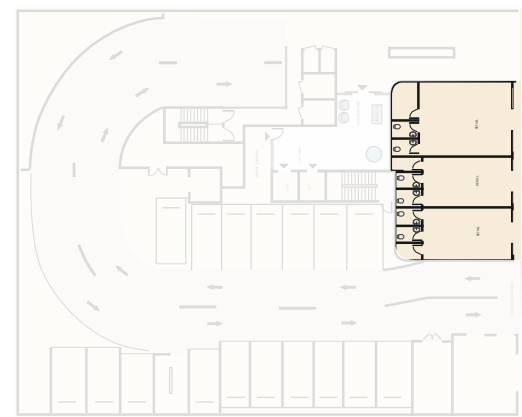


RETAIL AREA



# GROUND FLOOR

## RETAIL AREA



Floor Number	G	
Number of Rooms	0	
	Sq.M	Sq.F
Suite Area	63.03	678.45
Total Area	63.03	678.45

Floor Number	G	
Number of Rooms	0	
	Sq.M	Sq.F
Suite Area	43.74	470.81
Total Area	43.74	470.81

Floor Number	G	
Number of Rooms	0	
	Sq.M	Sq.F
Suite Area	44.77	481.90
Total Area	44.77	481.90



